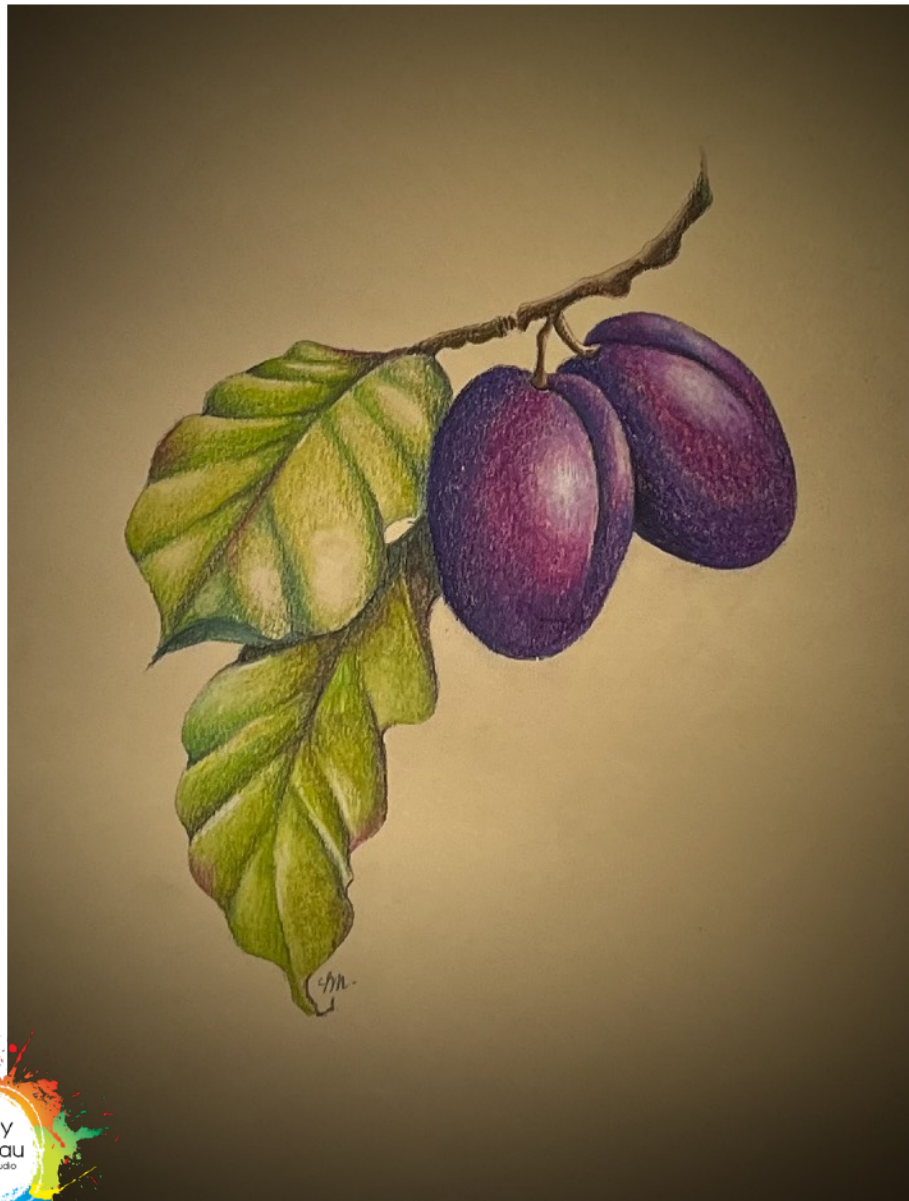
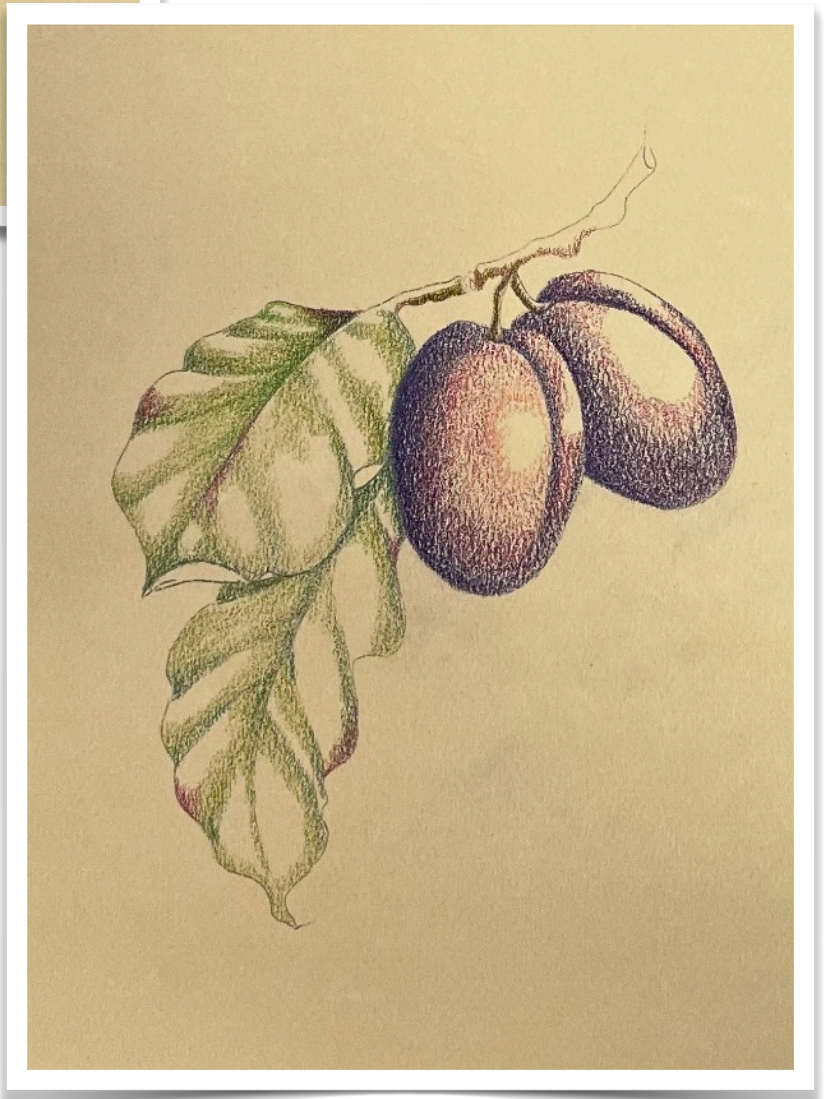
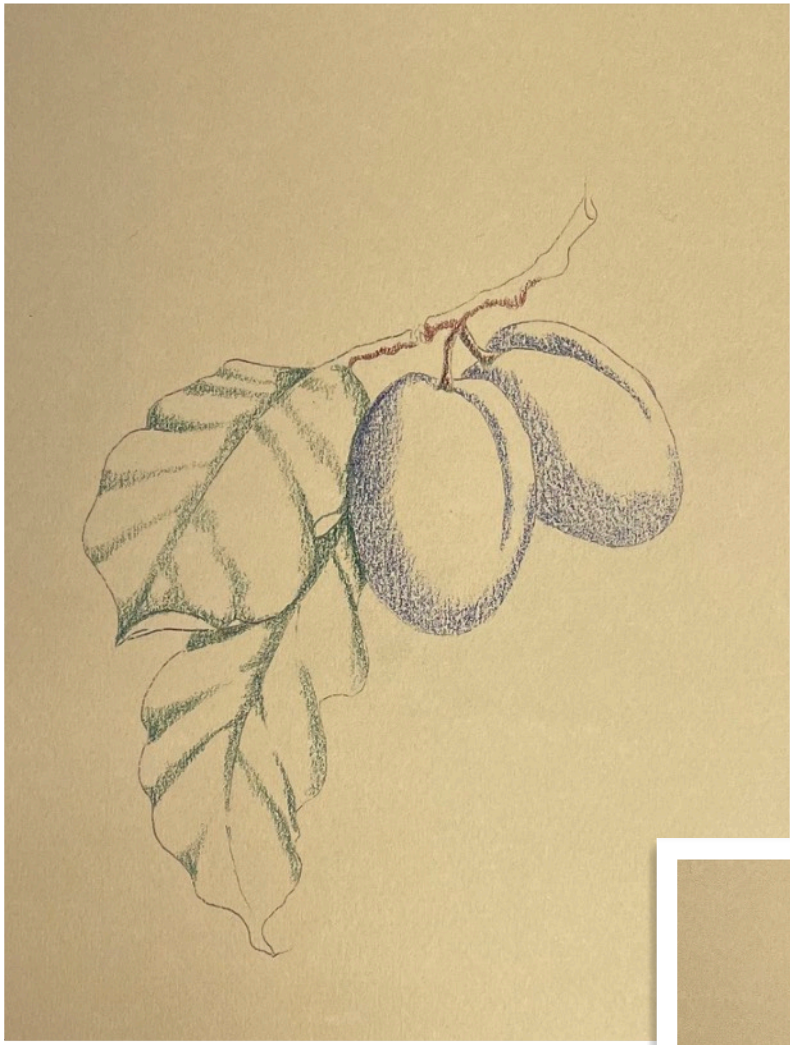


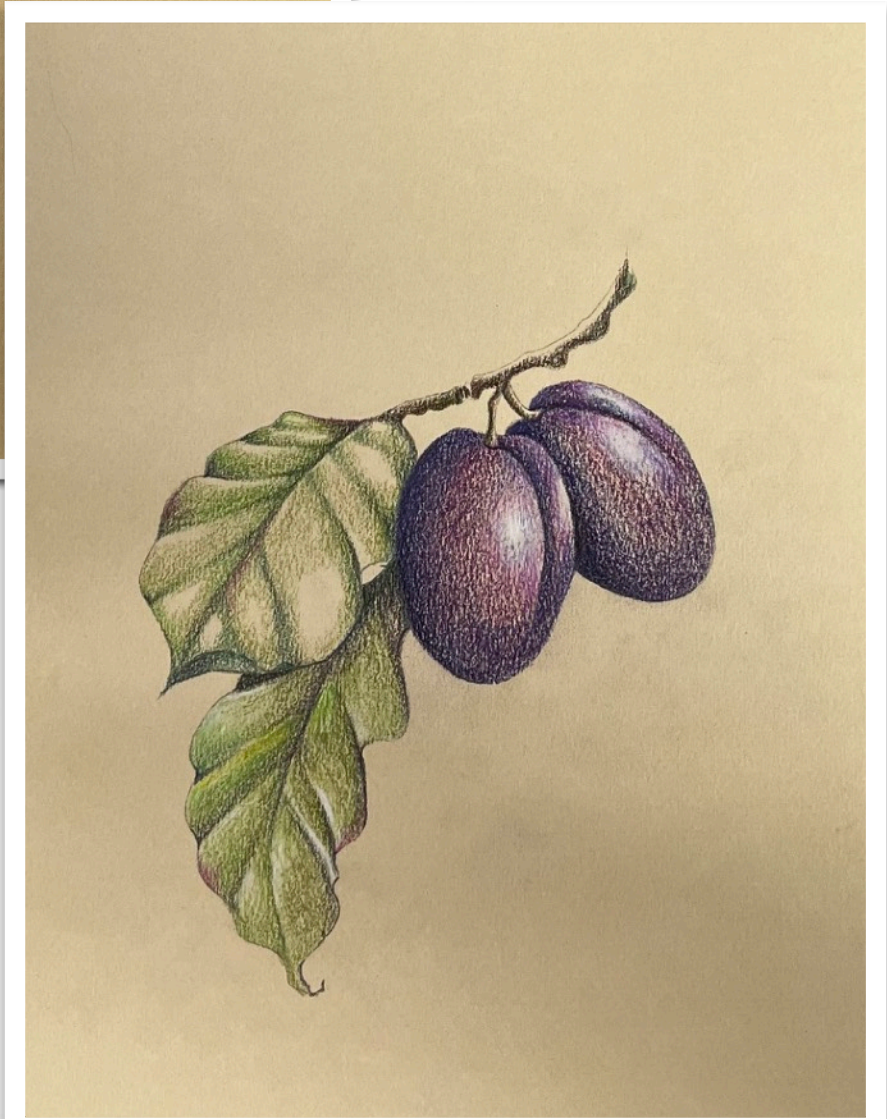
Perzilled Plums

Design By Tracy Moreau

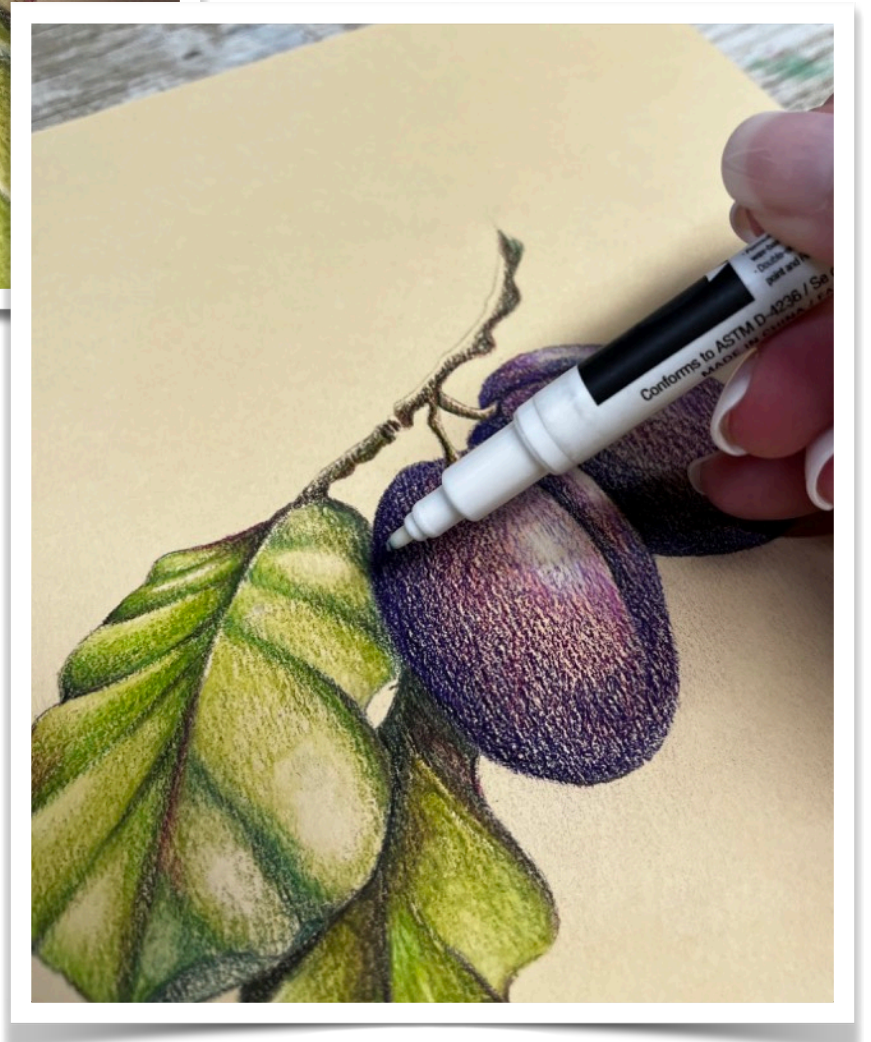
Pattern Includes Full Size Line Drawings, Full Colour Step By Steps, Detailed Written Instructions
And A Complete Supply List













Coloured Pencil Plans

Design By Tracy Moreau

You Will have to bear with me, I have some expertise with Coloured pencil but What I do know is a more recent acquisition. At the beginning of the pandemic , during lockdown , I decided that I would dive into my First Love... Drawing. A skill that over the years I have allowed to get rusty. As I love Colour , I decided that coloured pencils would be my weapon of choice and began collecting supplies, taking classes , and workshops and doing one tutorial after another... primarily in an effort to improve my drawing skills, I ended up with a passion for this medium. That does not necessarily mean I have developed the Skill to Teach it. But I am willing to try, and share what I do know.

When designing this I had two Goals, one was to work with a limited colour palette, to allow you to recreate this using any brand of Pencil and to make it affordable, by limiting the need to no more than a basic set. You do NOT have to use the brand that I have used: While the Supply list suggests a specific brand, I have Listed generic alternates on the right side. So use what you have that is closest. This is merely an exercise in trying this medium, more than creating a piece of Art.

You Will Need:

Derwent Chroma Flow Coloured Pencils

(I was sent a set of 24 by a distributor and Absolutely LOVE Them, Hold a point nicely, the Colours are rich and creamy and very easy to work with.)

Denim-12	Dark Blue
Violet-11	Dark Purple
Magenta-09	Dark Pink/ Red
Blush Pink-08.	Pink
White-24	White
Black-23	Black
Basil-16	Dark Green
Foliage-17	Mid Value Green
Natural Brown-20	Dark Brown/ Umber
Burnt Sienna-19.	Light Brown

Colour Pencil Paper

Canson Mi -Tiente 8.5 x 11 in Ivory

These papers are available in single sheets or in a pad format.

Other Supplies:

Fine Graphite Pencil, Grey Graphite paper, Soft Eraser, Blending Pencil (Gamsol Blending Pen, Or Gamsol Liquid and Blending stumps) Repositionable Tape. Long Point Pencil Sharpener

To Begin:

Trace and transfer the Line drawing to the Paper. Use very light pressure so you don't have heavy dark lines to contend with. I use a light tablet to trace the line drawing directly onto the paper, by placing the line drawing Under the paper and using the Fine Graphite pencil to lightly draw it on.

Use a sheet of paper to guard the paper you are drawing on. This prevents smearing smudging and transfer, and keeps the image clean.

The Method:

I Like to mount my paper onto a Hard board panel or a clip board..so you have something firm and smooth to work on. Tape it into place with the Repositional tape. (This prevents tearing of the paper)

We are using light pressure, ((Applying too much pressure flattens the texture and tooth of the paper and prevents you layering colours effectively)) and working in small ellipses. (Small Light Ovals) to apply the colour. We are working in layers, and this takes time to develop the depth and value we want. Be patient with yourself. Relax and enjoy the process. I have simplified the process for the absolute beginner.

The Leaves:

Establishing the Shadows and folds in the leaves by laying in the Basil-16 (Dark Green) Refer to the Colour images for Placement.

Apply the Next layer of Green (Foliage-17)(Mid value Green) Over top of the darker green and extend it out leaving an area of white in each segment of the leaves.

For the shaded areas under the top leaf apply a small amount of Natural Brown-20 (go over the Green) You can add a small amount to some of the folds in the leaves in and on the turn over at the point. Deepen some of these with a little bit of Magenta-09, applied over the the previous colours (small amount) You can also use it to create a little interest on the edges in a few places as well.

Apply another layer of the Foliage-17 (Mid value Green) and extend it out a bit further onto the open areas. This should leave smaller open areas for the Highlights. Apply a little White-24 to the open areas.

The Stems:

Using the Natural Brown-20 (Dark Brown)apply a shadow along the bottom of the stem, then on the left side of each of the stems on the plums. Keep it narrow. Then Apply a little shading over top of the Brown with the Burnt Sienna-19 (Light Brown) and extend it a little leaving a light area at the top edge for the highlight. Add a small amount of White-24 to the top edge.

The Plums:

Starting on the Left side of each Plum with the Denim-12(Dark Blue) work in small eclipses to about the half way point on each plum. Repeat this with a second layer but only across half of the first layer. Repeat again with a third layer coming Halfway across the last layer. Repeat this at the top

and down the crease(shadow is on the right side of the line) for both Plums. In the area under the the top Plum Apply a little Black-23 (Black) to deepen the shadow.

Apply Violet-11 (Dark Purple) Over top of the Blue and work out until past the edge of the Blue.Leaving an open area for the highlight. Repeat this with a second coat, coming to about half way across the first layer.

Apply Magenta-09 Over all of the Previous layers and coming across the Plum until just past the edge of the previous colour. Add a Small amount of Blush Pink-08 (Pink) and then finally the White-24 (White) for the Highlight.

This method will give you a nice mix of colour and a smooth and gradual change in value and transparency.

Blending:

There are options galore when it comes to Blending, Some prefer a Blending stump or Tortillion, There are Blending pencils that each pencil Brand recommends, and of course you can use Gamsol (Odorless turp/thinner), and there are blending Pens available(I love these as they allow for precise control)

I start the blending in the darkest Areas and Work one section at a time From Darkest to lightest. Be sure to clean the tip of your blending pen often so that the darker colours don't work into the Highlight area. If you are using a tortillion wipe frequently. If you have chosen to try the Blending pencil, work slowly and with light pressure , in much the same way you applied the colour. Take your time and repeat if needed.

Water Colour Pencil

This is just fun , and surprisingly easy to work with. You can get quite creative with them, you can create a soft watery effect or a Clean and hard edged look easily and everything in between. Again I wanted to keep the list of Colours fairly generic to keep it affordable and easily managed. I list a generic suggestion on the right.

You Will Need:

Faber Castell Albrecht Durer Magnus Water Colour Pencils:

Dark Indigo-157.	Dark Blue
Mauve-249	Dark Purple
Magenta-133.	Dark Pink/Red
Black-199	Black
White-101	White
Walnut Brown-177	Dark Brown
Emerald Green-163	Dark Green
Earth Green-166	Mid Value Green

Water Colour Paper

Arches 140 lb Cold Press Watercolour Paper

Other Supplies:

Fine Graphite Pencil, Grey Graphite paper, Soft Eraser, Repositionable Tape, Round Water Brush, Or Dynasty Black Gold #4 or #6.

The Method:

I Like to mount my paper onto a Hard board panel or a clip board..so you have something firm and smooth to work on. Tape it into place with the Repositional tape.

We are using light pressure, and working in small ellipses. (Small Light Ovals) to apply the colour. We are working with small quantities of Colour as we will be using water to expand and soften the colours. ` . I have simplified the process for the absolute beginner.

The Leaves:

Establishing the Shadows and folds in the leaves by laying in the Emerald Green (Dark Green) Refer to the Colour images for Placement.

Apply the Next layer of Earth Green(Mid value Green) Over top of the darker green and extend it out leaving an area of white in each segment of the leaves.

For the shaded areas under the top leaf apply a small amount of Walnut Brown (go over the Green) You can add a small amount to some of the folds in the leaves in and on the turn over at the point. Deepen some of these with a little bit of Magenta (Dark Pink/Red), applied over the the previous colours (small amount) You can also use it to create a little interest on the edges in a few places as well.

Apply another layer of the Earth Green (Mid value Green) and extend it out a bit further onto the open areas. Just. A Little you need room for the highlights. If you over work it a bit, just Apply a little White to the open areas.

The Stems:

Using the Walnut Brown (Dark Brown)apply a shadow along the bottom of the stem , then on the left side of each of the stems on the plums. Keep it narrow. Then Apply a the shading over top of the Brown with the Earth Green(Mid value Green) and extend it a little leaving a light area at the top edge for the highlight. Add a small amount of White-24 to the top edge.

The Plums:

Starting on the Left side of each Plum with the Dark Indigo(Dark Blue) work in small ellipses to about the 1/3 way point on each plum. Repeat this with a second layer but only across half of the first layer. Repeat again with a third layer coming Halfway across the last layer. Repeat this at the top and down the crease(shadow is on the right side of the line) for both Plums. In the area under the the top Plum Apply a little Black (Black) to deepen the shadow.

Apply Mauve (Dark Purple) Over top of the Blue and work out until past the edge of the Blue, just a little.Leaving an open area for the highlight. Repeat this with a second coat, coming to about half way across the first layer.

Apply Magenta (Dark Pink/red) Over all of the Previous layers and coming across the Plum until just past the edge of the previous colour. and then finally the White (White) for the Highlight.

This method will give you a nice mix of colour and a smooth and gradual change in value and transparency.

Blending:

We are using either a Water Brush (A brush with a reservoir) or a good Quality Artists Brush (Rounds)

I start the blending in the darkest Areas and Work one section at a time From Darkest to lightest. Be sure to rinse the brush often so that the darker colours don't work into the Highlight area. If you are using a water brush. Press to a piece of paper towel and squeeze some fresh water through the bristles. Use small quantities of water and take a little care in working the colours together and out to their lightest value. Leave and are that is white for the light impact point.

