

Summer Lemonade

Design By Tracy Moreau

You Will Need:

Dollar General

Plastic Pitcher and Glasses

DecoArt Americana Multi Surface Satins

Chartreuse
Pumpkin Patch
Canary
Turf Green
Coffee Bean
Black Tie
Cotton Ball

Brushes

#4 Round, #6 Deerfoot, #6 Filbert 10/0 Liner

Misc

Alcohol Wipes/ Rubbing Alcohol

DecoArt Multi Surface Satins are without doubt one of the BEST paints available for painting and decorating a wide range of plastic and synthetic surfaces!

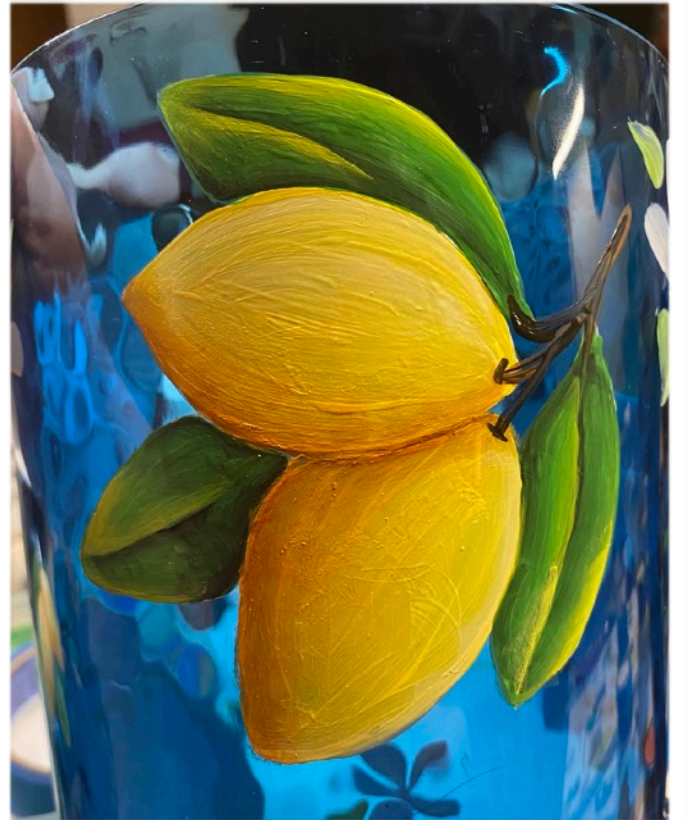
For your patio table settings to the throw cushions, this paint stands up to whatever you can throw at it.

Top rack dishwasher safe when fully cured, they are not just beautiful but highly functional!

They blend and mix beautifully and you can create a huge range of values and colors with just a few basic colors.

This is an easy paint and loads of fun and looks great on the patio table!





To Begin:

Thoroughly wash the pitcher and glasses with Hot Soapy water. Dry them well.

Print your line drawing cut it down to a manageable size and tape it into position in the inside of the pitcher or glass, with the image facing out. (you should be able to clearly see the line drawing. Tape it in place.

Step:1. Wipe the area that is to be painted with the Wipes. Let it dry and then base coat each section of the image with a coat of Cotton Ball.

Step:2. Base the lemons with 2 coats of Canary and the leaves with 2 Coats of Turf Green

Step:3. Mix a small quantity of Black Tie with Turf Green (makes a darker value of Green) and shade under the lemons on the leaves and down the centre vein. (these paints mix very well and allow you to blend easily with no medium required)

Step:4. Pick up some Canary of the deer foot, then load the toe with a small amount of Pumpkin Patch. Keep the darker value to the outside edge and stipple this colour in for a small shadow on the bottom of the lemons. Repeat this with a small amount of Coffee Bean.

Step:5. Highlight the leaves with a mix of Chartreuse/ Cotton Ball. Apply this to the outer edge and opposite the shading on the centre vein.

Step:6. Highlight the lemons with the Deerfoot loaded with Canary on the heel and Cotton Ball on the toe. Stipple this onto the upper edge of the Lemons. Let it dry and then apply a single stroke of Cotton Ball for the light impact point.

Step:7. Brush mix Coffee Bean with Black Tie to make a dark Brown and stroke in the stems with the Liner.

