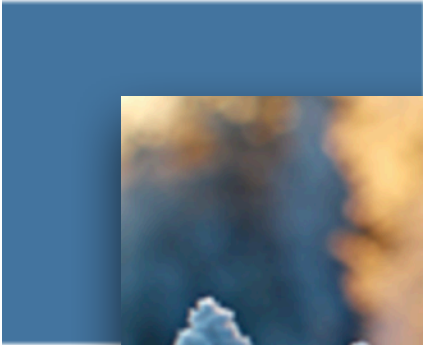


Choosing A Winter Colour Palette



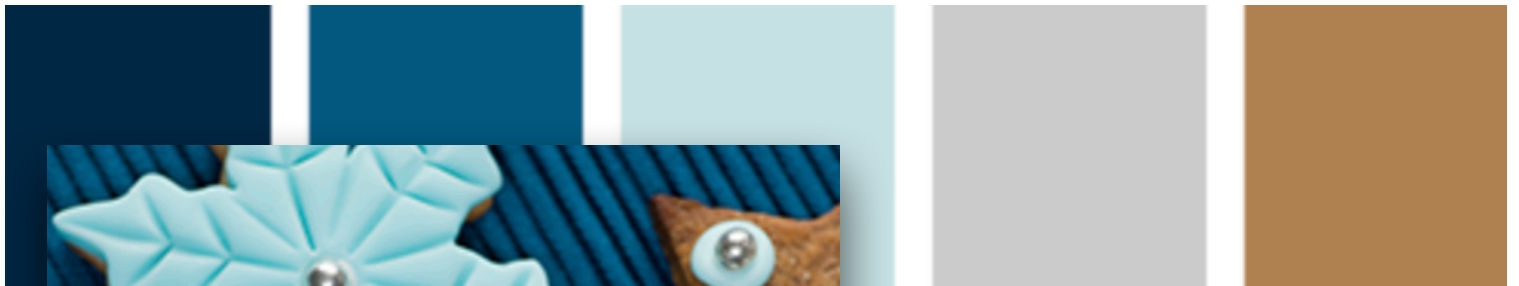
Winter Colour Palettes Don't Have To Be Cold!!

When we think winter, our thoughts often go directly to the White of Snow and the Chilly blues of a winter sky... but they do not have to be, to effectively convey the feeling of winter.

I have some tips for you when it comes to selecting a pleasing and interesting colour palette for your winter projects.

Contrast:

We often talk about colours contrasting but Colour Temperature can create very effective contrast too! When Choosing your palette try to keep at least one or two colours that add a touch of warmth. Keeping the Cooler colours as the most dominant and add balance and interest with a touch of heat. A Winter colour palette can become a bit oppressive feeling if not balanced with a little warmth.



Prussian Blue
Victorian Blue
Winter Blue
Grey Sky
Honey Brown

Weight
Depending on the mood you want to set, keep in mind the the weight of the colour, the darker the heavier, the lighter, the , well, Lighter. Again Balance is important. If you want the atmosphere of the piece to feel heavier choose colours in the darker to Mid values, if you want light and airy choose colours that are in the Mid to lighter values.

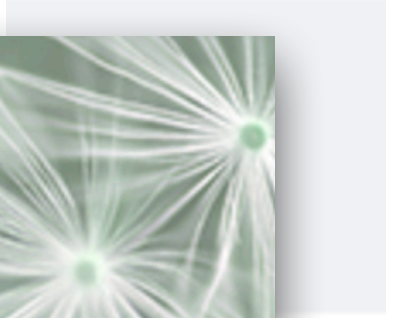
Desert Cactus

Aloe

Grey Sky

Spa Blue

Aqua Sky





Paynes Grey
Aloe



Spa Blue
Light Mocha



Camel



I try to avoid using GREY too much when designing winter schemes, but it can be a wonderful way to create a more sombre mood in a piece, a level of sophistication or calm. Again balance is important, try adding a small amount of Yellow or a warmer grey and some lighter values to soften the over all feel of the colours.

Lamp Black

Charcoal Grey

Grey Sky

Dove Grey

Warm White

