

Welcome Spring

Designed By Tracy Moreau

Pattern Includes Full Sizes Line Drawings, Detailed written Instructions and Full Colour Step By Steps.



www.tracymoreau.net



Welcome Spring

You will Need:

Southern Ridge Trading

www.chipboard.ca

Pretty L'il Heart Canvas (wood Section)

www.decoart.com

DecoArt Americana : Warm White, Aqua Sky, Lilac, Asphaltum, Lamp Black.

DecoArt Media Fluid Acrylics: Diarylide Yellow, Dioxazine Purple, Primary Magenta, Green Gold , Matt Medium.

www.thebrushguys.com

Faux Squirrel 1827 Series: 1/2 Angled Shader, 1/4 Angled Shader, #2 Rigger, #4 Round

Dynasty Black Gold 206 Series: #4 filbert.

Tracy Moreau stencil Brush 1/2

www.stampendous.com

Vintage Letter Stamp SKU #:RS-R221

www.tracymoreau.net

1/4 Polka Dot Stencil

www.josonya.com

JoSonya Fast Drying Glaze

Misc

White Graphite Paper. Scruffy Brush or spatter brush, Shop towels or Paper towels , Staz-on Stamp pad, Fine Black Gel Pen.(permanent), Pretty Polka Dot Ribbon 1/2" Wide. (I used a Mint Green Gros Grain)

Prep:

If your Piece is made of MDF , apply two light coats of Matt Medium over the surface, Prior to base coating. Allow it to dry well. Sand lightly.

If your Piece is made of Wood, mix Base colour (Lamp Black) 1:1 with Matt Medium. Let dry well and then sand lightly. Apply a base coat as usual.

I also Use Jo Soya Fast Drying Glaze for thinning paint, for line work , I use it as a floating medium as well. I simply dress the brush with the glaze (like I would with water) and then float as usual. I use it like this because it does not dilute the paint. It allows the paint to flow smoothly for nice transparent floats with all the vibrancy. It will also create lovely water colour effects when used with Fluid acrylics.

To Begin:

Apply two light coats of Lamp Black to the surface.

The Base Texture:

On the palette: Warm White

Dry brush the entire surface from the top down using the Stencil brush loaded with Warm White. The resulting finish should be dry looking, a bit streaky and not quite fully opaque. Some of the background Black should be showing through in places. Let it dry then Sand Lightly to smooth the surface and expose a few more areas of the black. Wipe free of dust.

OPTIONAL: Using the Stamp and the Stamp pad, press the image of the Script over the background, repeat to fill the surface, or in just a few places the choice is yours. Let it dry well.

Apply washes of the following colours in small patches (5 or 6) keeping the darkest value to the outside edges. Let the colours overlap slightly.(I use the fast drying glaze to move the colour around easily). Let it dry. Diarylide Yellow, Primary Magenta, Green Gold, Cobalt Teal Hue and Dioxazine Purple. Use the 1/4 polka dot stencil, and the stencil brush to apply Polka dots to the Surface. They should be fairly irregular and imperfect.

The Dragonflies:

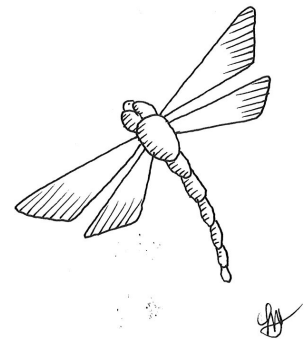
Base the small dragon Fly and the body of the larger one with Lamp Black. Highlight the segments of of the larger dragonfly with floats of thinned Warm White.

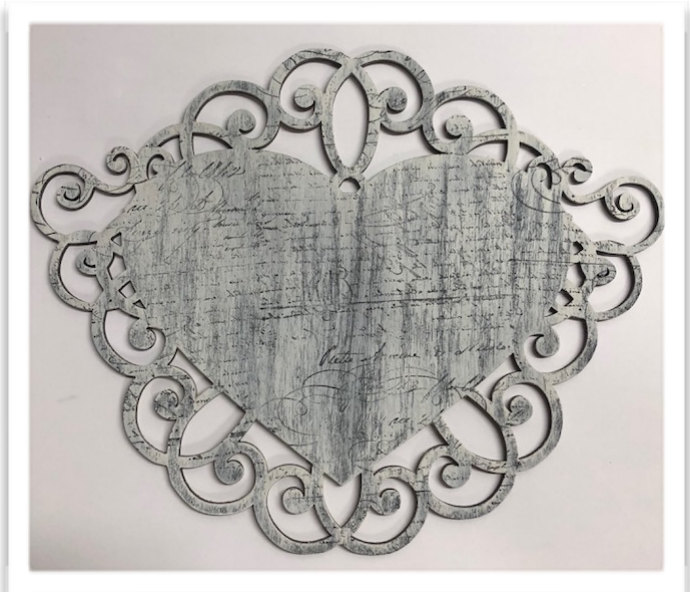
Base the wings of the larger dragonfly with White Gesso. When dry apply a coat of Warm White. Float a little Cobalt Teal Hue on the tips and the base of each wing. let it dry. Float a weak highlight to the segments on the body using heavily thinned Warm White. Let it dry. Roughly trace the shape of the wings using the Gel pen. (just a scribbly line will do .. neatness doesn't count here)

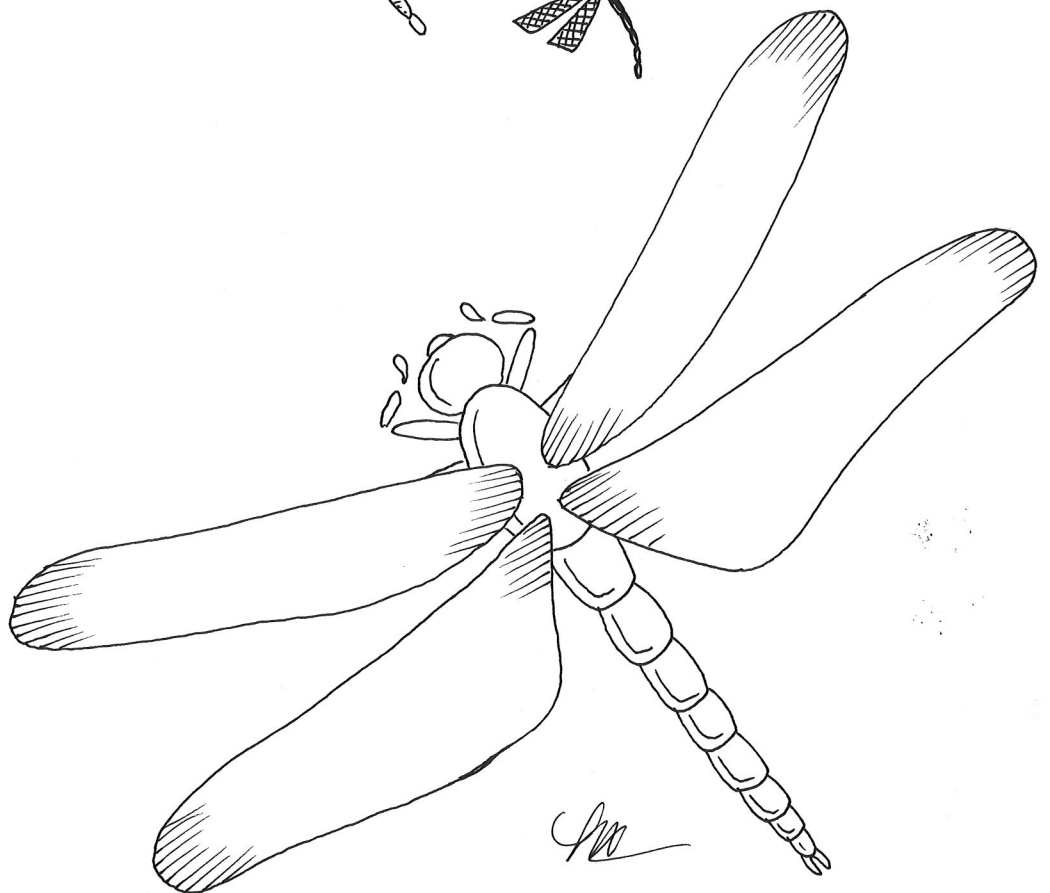
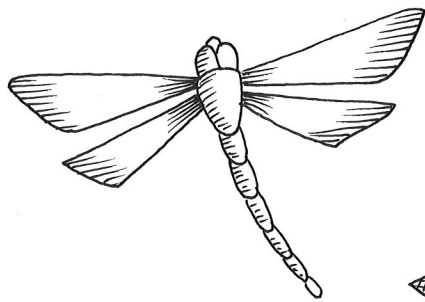
Spatter the surface using a scruffy or a spatter brush with thinned Warm White, Lamp Black, and Asphaltum. Let it dry. Apply a float of thinned Asphaltum over the edges of the surface, just enough to age the edges just a little.

Cut out the words provided and adhere it to the surface using the Matt Medium . Let it dry and then seal with a second coat. Add a small float of asphalt to the bottom of the paper. Let it dry.

Welcome Spring







You will Need:

Southern Ridge Trading

www.chipboard.ca

Pretty L'il Heart Canvas (Wood Section)

www.decoart.com

DecoArt Americana : Warm White, Aqua Sky,
Lilac, Asphaltum, Lamp Black.

DecoArt Media Fluid Acrylics: Diarylide Yellow,
Dioxazine Purple, Primary Magenta, Green Gold ,
Matt Medium.

www.thebrushguys.com

Faux Squirrel 1827 Series: 1/2 Angled Shader,
1/4 Angled Shader, #2 Rigger, #4 Round
Dynasty Black Gold 206 Series: #4 filbert.
Tracy Moreau Stencil Brush 1/2

www.stampendous.com

Vintage Letter Stamp SKU #:RS-R221

www.tracymoreau.net

1/4 Polka Dot Stencil

www.josonya.com

JoSonya Fast Drying Glaze

Misc

White Graphite Paper. Scruffy Brush or spatter brush, Shop towels or Paper towels , Staz-on Stamp pad, Fine Black Gel Pen.(permanent), Pretty Polka Dot Ribbon 1/2" Wide. (I used a Mint Green Gros Grain)

Tracy Moreau Design Patterns are protected under International Copyright law, and are registered with Canadian Intellectual Properties. Mechanically or digitally reproducing images text or any portion of the pattern is a violation of Copyright, unless done with expressed written permission.

Copyright 2008-2018 www.tracymoreau.net

“Welcome Spring”

TM18013