

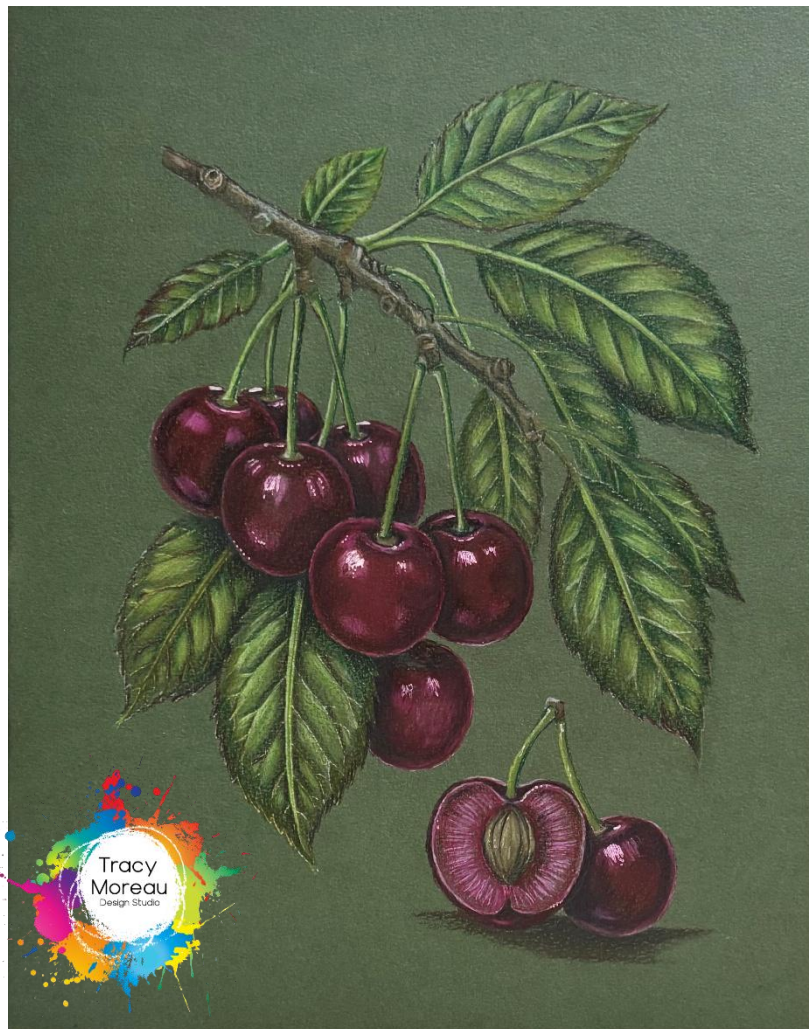
Sweet Summer

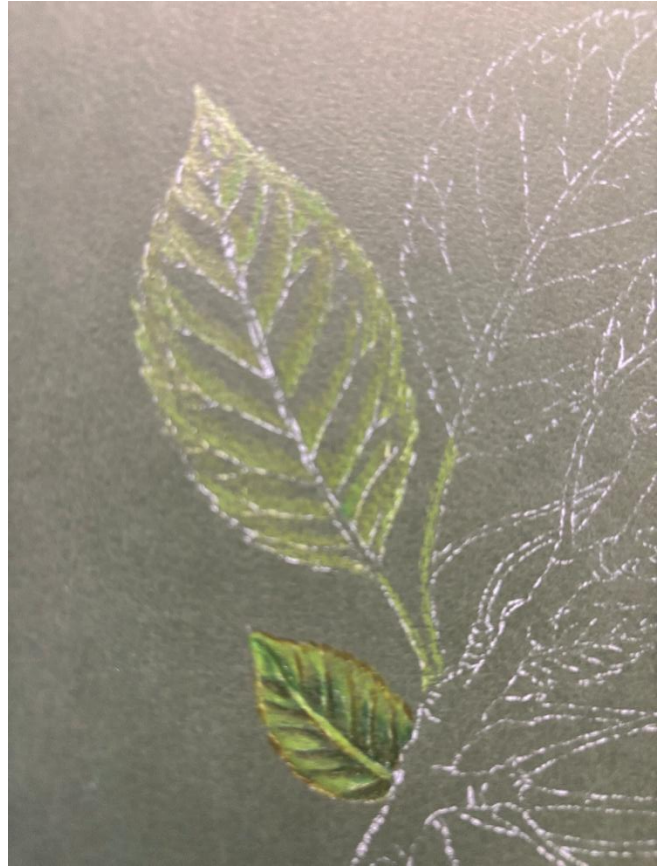
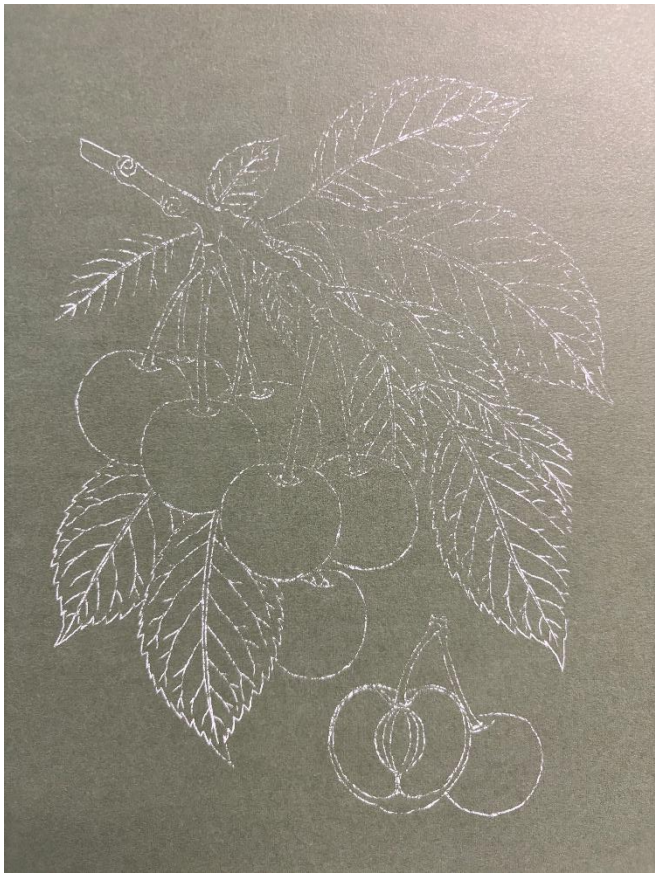
# Cherries

Design by Tracy Moreau

Created from Vintage Botanical from the Public Domain.

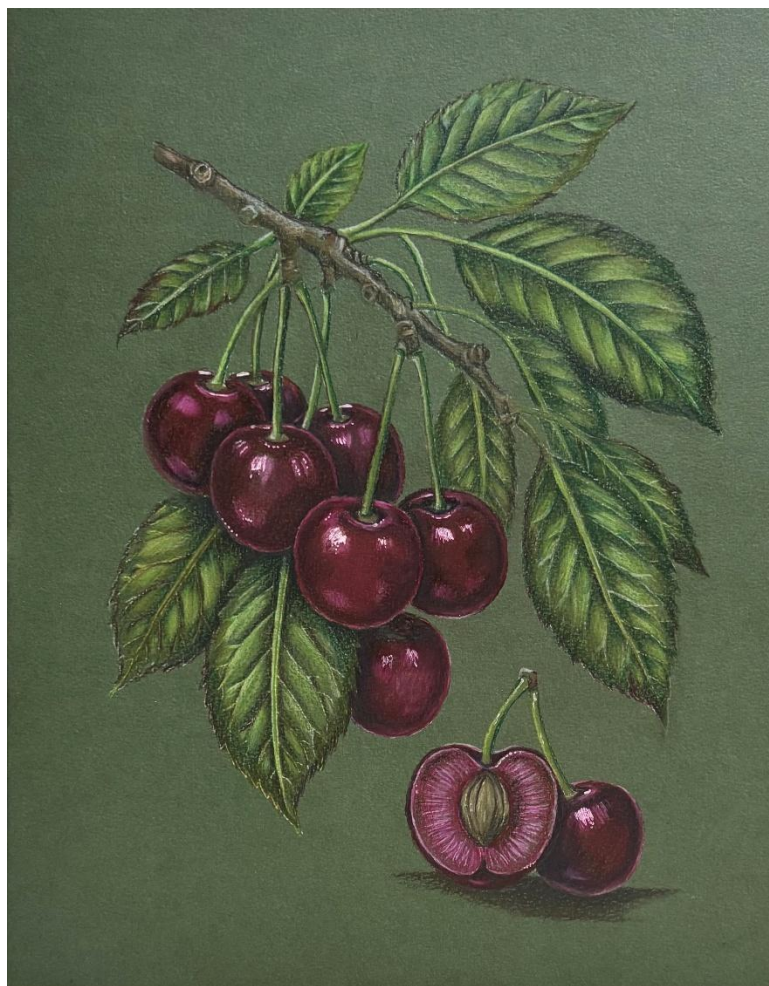
Pattern Includes Full Color Step By Steps, Full Size Line Drawing, Full Color Reference  
And A Complete Supply List.











# Sweet Summer Cherries

Created By Tracy Moreau

Vintage Botanical from The Public Domain

## **You Will Need:**

Canson Mi Tient paper, (Smooth side) in Dark Green.

## **Prisma Color Colored Pencils**

Black Rasp Berry PC1095

Tuscan Red PC937

Crimson Lake PC925

Magenta PC930

Permanent RedPC122

Pumpkin Orange PC1032

Dark Green PC908

Marine Green PC988

Green, Ochre PC1091

Lime Peel PC1005

Spring Green PC913

Yellow Chartreuse PC1004

Deco Yellow PC1011

Dark Umber PC947

Light Umber PC941

White PC938

20% French Grey PC1069

90% Warm Grey PC1-58

Jet Black Extra Smooth PC14420

## **Misc:**

Graphite Pencil, Colorless Blender/ Burnisher Pencil, Mechanical eraser, Long Point Sharpener. White Gel Pen or White Paint.

## **To Begin:**

Turn the paper to the Smooth Side. Tape the paper to a drawing board to secure it. Trace and transfer the line drawing (LIGHTLY) to the paper using a light grey Graphite paper. Carefully and gently rub the line drawing with a soft eraser to lighten the line drawing a little.

Wear an Artists Glove or use a scrap piece of paper to rest your hand on while working.

## **Blending:**

There are options galore when it comes to Blending, some prefer a Blending stump or Tortillon,

There are blending pencils that each pencil brand recommends, and of course you can use Gamsol

(Odorless turp/thinner), and there are blending pens available (I love these as they allow for precise control)

I start the blending in the darkest Areas and Work one section at a time From Darkest to lightest. Be

sure to clean the tip of your blending pen or pencil often so that the darker colours don't work into the

highlight area. If you are using a tortillon wipe frequently. If you have chosen to try the blending

pencil, work slowly and with light to medium pressure, in much the same way you applied the colour. Take

your time and repeat if needed.

## **The Cherries:**

On The Drawing Board: Black Raspberry PC1095, Tuscan Red PC937, Crimson Lake PC925, Magenta PC930, Permanent Red PC122, Pumpkin Orange PC1032, White PC938, Jet black Extra Smooth PC14420

I like to apply colour starting with the darkest value. (the black is for final shading if needed)

1: I begin on the cherries with a shadow of Black Raspberry, just in from the edge of the cherry, creating a very thin open space. Apply the color in small tight ellipsis using medium to light pressure. Use this to add the shadow to separate the cherries as well.

2: Working over the first shading and covering the space at the edge of the cherry apply a thin layer first with Tuscan Red, and again with Crimson Lake leaving an small open space at the upper center of the cherries. (the highlight area) Then apply a light layer to the open area with Permanent Red.

3: Add a layer of Magenta to the narrow space at the edge of each cherry. And apply a layer over the highlight area as well.

4: Apply a light layer of Crimson Lake over the cherries. Apply two spots of highlight to the upper area with Magenta and then again with a single spot at the lower left side of the visible cherries. Lighten these spots then

with a small amount of White. (it'll turn a bright Pink.) Add a Bright Highlight to each spot with either White paint or the white gel pen.

### **The Half Cherry and Pit:**

On The Drawing Board: Black Raspberry PD1095, Tuscan Red PC937, Crimson Lake PC925, Magenta PC930, Permanent Red PC122, White PC938, Jet Black Extra Smooth PC14420, Light Umber PC941

Apply a light layer of Light Umber to the pit. Shade the right side of the pit with a light layer about 1/3 the width of the pit. Deepen the shading with a light layer of Dark Umber. Add vertical lines with a very sharp Jet Black Pencil PC14420. Highlight to the right side of the Lines with a small amount of Deco Yellow. Blend with the colorless blender.

The flesh of the ½ cherry, is filled with a generous layer of Magenta. Shade around it with a light layer of Crimson Lake. With the darker value toward the outer skin. Add a small shadow around the Pit with this as well and with the darkest value toward the pit. In the center between the two shadings, apply a series of lines radiating out from the pit. Deepen the shading with a layer of Tuscan Red. Blend the colors with the colorless blender.

Color the skin with a layer of Tuscan Red. Deepen the color at the top and bottom of the cherry with layer of Crimson Lake. Add a little Magenta to the edges of the cherry, apply a small amount of white over it for a simple highlight.

### **The Leaves and Stems:**

On The Drawing Board: Dark Green PC908, Marine Green PC988, Green, Ochre PC1091, Lime Peel PC1005, Spring Green PC913, Yellow Chartreuse PC1004, Deco Yellow PC1011, White PC938, Dark Umber, Permanent Red PC122

Establishing the Shadows and folds in the leaves by laying in the Dark Green. Refer to the Colour images for Placement. Apply the next layer, using Marine Green Over top of the darker green and extend it out leaving an area of white in each segment of the leaves. Repeat this with Green Ochre. Begin Highlighting the open spaces with a layer of Lime Peel covering the entire leaf. Fill in the small highlight area with a light layer of Spring Green and then a smaller highlight with Yellow Chartreuse. Add a very small amount white to this area and then blend all the colors with the colorless blender. Deepen the veins in the leaves with a fine layer of Dark Umber. Add a layer of Light Umber the edges of the leaves and then a narrower layer of Dark Umber at the outer edge. You can add a few small areas of reflected color to the edges of a few leaves with a light application of Permanent red.

**The Stems:**

Using Marine Green apply a shadow along the right side of each stem, then on the left side apply a narrow line of Lime Peel. Between the two colors add a layer of Spring Green and then a layer of Yellow Chartreuse.

**The Branch:**

On The Drawing Board: Dark Umber PC947, Light Umber PC941, White PC938, 20% French Grey PC1069, 90% Warm Grey PC1-58, Jet Black Extra Smooth PC14420

Apply a narrow shadow to the outer edges of the branch with Dark Umber. Apply a layer of Light Umber over the first shading. Apply a narrow layer of Pumpkin Orange to the open area of the branch. Colour over the entire branch with a light application of 90% Warm Grey. Add a brighter Highlight to the branch (refer to the images for placement) with 20% French Grey. Deepen shadows with a light layer of Jet Black.

Blend with the blending pencil and adjust as needed.

Reference



*Prunus avium*

