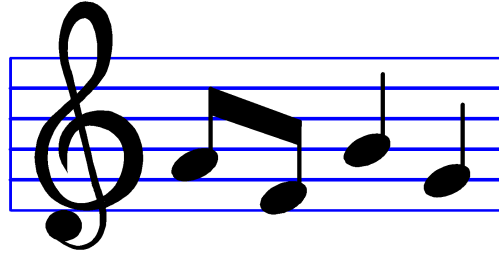


# BAILEY BAND

Stephanie Daley & Phillip Nguyen  
4110 Bauer Road  
Pensacola, FL 32506  
(850) 806-5940



April 15, 2025

**Congratulations on your decision to join the Bailey Band!** In learning to play a musical instrument, you will begin a journey that can last a lifetime! **Please do not change instrument choices without first speaking with the band directors.** Our email addresses are listed below. When you sign up with us tonight, we will schedule your child in the proper band class based on their choice. If you change, then their schedule will be incorrect. We also sign up a particular number of instruments in each section of the band. In order to change, we will have to determine if an opening exists.

If you are playing flute, clarinet, saxophone, trumpet, trombone or percussion, you need to make arrangements to get your instrument, either as a purchase or rental, from a local music store. Bailey's brand of choice for all instruments is **YAMAHA**. The quality that you get with that brand will carry your child through the beginning of their musical experience. Parents, please do not purchase your student's instrument from a discount house or on the internet. Using either of these methods is very risky in the acquisition of a quality instrument. In order to provide your student with the utmost opportunity for a successful musical experience, they will need a good quality instrument. Very often, the repair and maintenance costs will exceed the value of these instruments.

Beginning band students will begin bringing their instruments **on the second week of school**. The first week will be an introductory to the band program and we WILL NOT use instruments those days. They will need their band binder and binder supplies the first day. Please make sure to have instrument and instrument supplies by the end of the first week of school. See attached instrument materials list.

If you are playing a school-owned instrument, i.e. baritone, French horn or tuba, you will need to purchase your own mouthpiece. The fee for playing a school-owned instrument is \$150.00 per semester (\$300.00 per year) and is non-refundable. If instrumental rental fees are paid by December 19th, 2025 you will receive a Early-pay discount of \$50, meaning that the fee for the year will be \$250 per year instead! We do work out payment plans if needed. This fee includes one horn at school and one horn at home. All checks should be made payable to Bailey Middle School. **If your child comes to summer camp please bring at least \$50 toward this payment so we can issue your child an instrument to play. This will be their 'home' horn.**

Don't forget to make plans to come to beginning band camp July 21-24 at Bailey Middle School. Times are 7:30-12:30 and it is \$43 per student. This is a great way to get a head start and get your kids started off right on their instruments. We have a lot of fun and the price is great. Once again, welcome to our band program! We look forward to working with you and your new band member!

Please feel free to email us anytime at:

\*Percussion, Trumpet, Tuba, Trombone, & Baritone - [pnguyen@ecsdfl.us](mailto:pnguyen@ecsdfl.us)

\*Clarinet, Saxophone, Flute - [sdaley@ecsdfl.us](mailto:sdaley@ecsdfl.us)

'Like' us on Facebook at: <https://www.facebook.com/baileybulldogband/>

## Approved Instrument Guide & Materials Checklist

FOR BAILEY MIDDLE SCHOOL BEGINNING BAND STUDENTS

Bailey Middle School's brand of choice is **Yamaha**. Yamaha represents high-quality materials and workmanship. It is important that you acquire a well-made instrument in good working condition in order for your child to enjoy a successful experience in band. Please note that there are some brands out there that exist that cannot be repaired and the instrument must simply be replaced, costing you more in the long-run than just renting-to-own a high-quality instrument! Keep this in mind when seeing prices that are "too good to be true!" For younger players, we recommend investing in the rent-to-own instrument **that includes a repair package!** In addition to the instrument, your child must have some additional items for cleaning, maintenance, and home practice. Please make sure they have everything they need **BEFORE** school starts.



RSVP for  
band  
camp by  
clicking  
the QR  
code



**Bailey Summer Band Camp will be  
July 21-24, 2025. 7:30am-12:30pm.  
Bailey MS Cafeteria. \$43 per student.**

### All beginning band students will need a/an:

- **Essential Elements Book 1** for their chosen instrument
- Metronome/tuner combination
- Wire music stand (to be kept at home for practice)
- Band ONLY 3 ring binder (black, 1/2 inch, hard cover WITH pockets)
  - o 10 sheet protectors
  - o 10 sheets of notebook paper
  - o 3 ring pencil pouch
  - o 3-5 sharpened pencils
  - o Small pencil sharpener (with built in pencil shavings catcher)

Additional supplies needed for the:

- **Flute:**
  - o Cleaning/tuning rod, cleaning swab, polishing cloth
- **Clarinet/Saxophone:**
  - o Yamaha 4C mouthpiece, 4 working reeds at all time (Vandoren size 2.5) with a 4-reed guard, Rovner/Versa ligature, Mouthpiece patch & thumb saver
- **Trumpet:**
  - o 7C mouthpiece or equivalent, Ultra-Pure valve oil, tuning slide grease (Slide-Eze), mouthpiece brush, snake brush, valve casing brush, polish cloth
- **Trombone/Baritone (instrument is rented from school):**
  - o Yamaha 51 mouthpiece, Ultra-Pure valve oil, tuning slide grease (Slide-Eze), mouthpiece brush, snake brush, valve casing brush, polish cloth
- **Tuba (instrument is rented from school):**
  - o Conn-Helleberg 120S mouthpiece, Ultra-Pure valve oil, tuning slide grease (Slide-Eze), mouthpiece brush, snake brush, valve casing brush, polish cloth
- **Percussion:**

- o Yamaha percussion kit (includes practice pad & bell kit). You will also need a stick bag with medium hard yarn mallets (Innovative Percussion preferred) and 5B drum sticks.