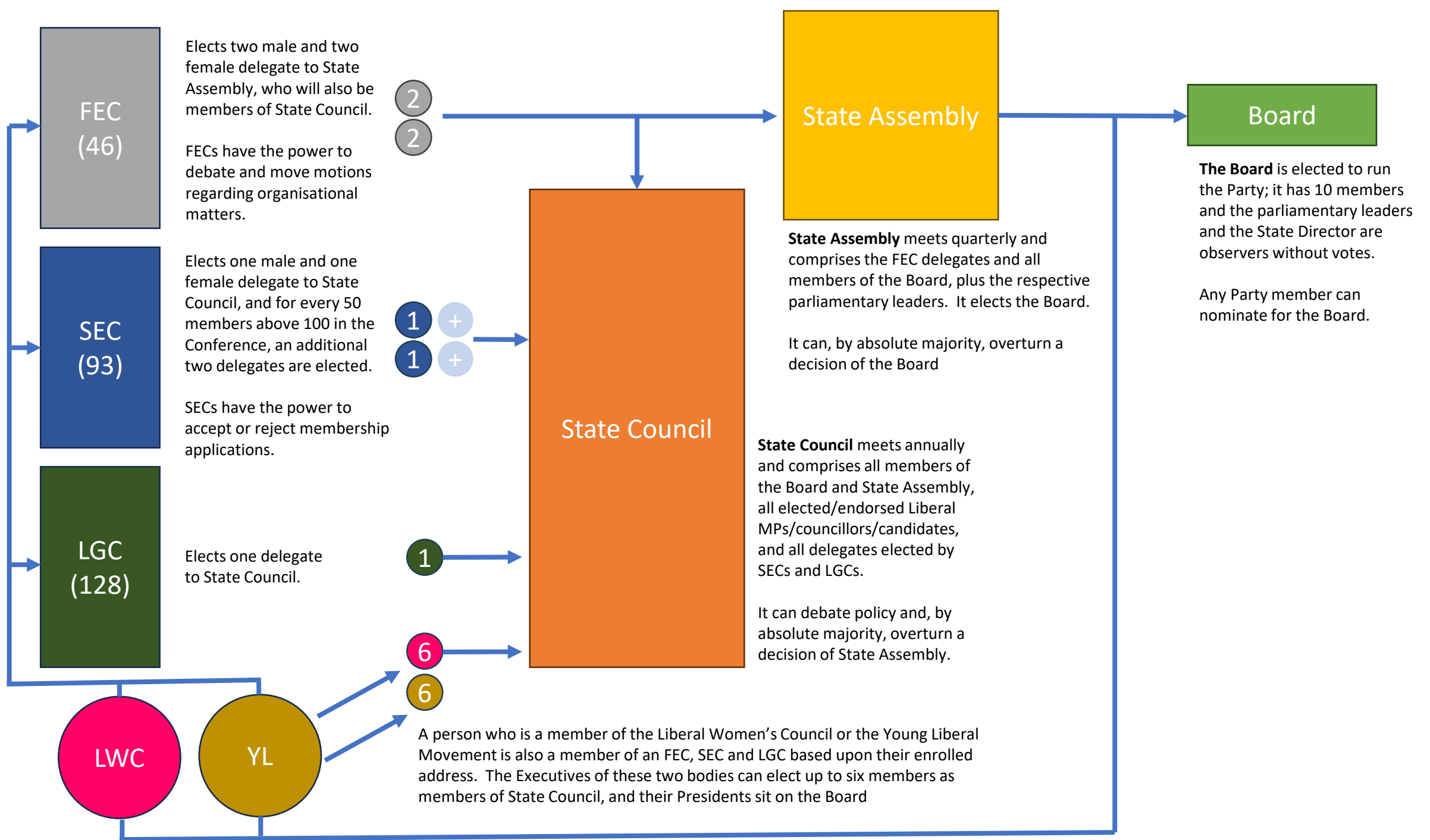


A blueprint for reform – fixing our Party

- **Simpler governance**
 - Board of 10 members, plus parliamentary leaders and State Director as observers
 - New State Assembly
 - Smaller State Council
- **Abolish branches**
 - Every member belongs to a Federal, State and Local government conference
 - Delegates come from Conferences based on conference membership
- **Equal numbers of men and women in organisational roles**
- **Maintaining plebiscite preselections**
 - Members vote in the electorate where they live
 - Option for community preselections
- **Greater local say in preselections under 'special powers'**
 - Giving local conference executives a say
- **Reverting to 50% plus one majority decision making**
 - Absolute majority required in some instances, including to overturn decisions of the Board

All members are concurrently a member of an FEC, SEC and LGC based on their enrolled address



Governing the Division

	Board	State Assembly	State Council
Who	<ul style="list-style-type: none"> State President Male and female Vice President (<i>ranking VP is opposite sex to President</i>) Treasurer YL President LWC President One male and one female urban rep One male and one female country rep 	<ul style="list-style-type: none"> The Board Two male and two female delegates from each Federal Electorate Conference Federal Leader (or representative) State Leader (or representative) 	<ul style="list-style-type: none"> The Board State Assembly delegates One male and one female delegate from each State Electorate Conference, plus one additional male and female delegate for each 50 members above 100 members of the Conference One delegate from each Local Government Conference Up to six members of the YL executive Up to six members of the LWC executive Federal Leader (or representative) State Leader (or representative) All endorsed/elected MPs/Senators/Councillors/candidates
Chair	State President or, in their absence or unavailability, the ranking Vice President		
Observers	<ul style="list-style-type: none"> Federal Leader (or representative) State Leader (or representative) State Director 	<ul style="list-style-type: none"> State Director 	<ul style="list-style-type: none"> State Director
Elected by	State Assembly	Members of the Federal Electorate Conference	Members of the State Electorate and Local Government conferences
Who is eligible	All members of the Party	All members of the FEC	All members of the SEC/LGC
Frequency of meetings	Monthly, or as required	Quarterly, or as required	Annually, or as required
Powers	<ul style="list-style-type: none"> All powers necessary to run the Division Determine the seats/areas to be contested Conduct a special preselection 	<ul style="list-style-type: none"> Elect the Board Fill casual vacancies on the Board Determine the preselection timetable Elect Federal Council delegates Appeals on membership decisions 	<ul style="list-style-type: none"> Amend the Party's constitution (by absolute majority)

		<ul style="list-style-type: none"> • Determine membership applications • All other powers not otherwise allocated to the Board or State Council 	
Committees	Finance Audit and Governance	Campaign Fundraising Prospective candidates Membership Disputes	Public policy matters Constitution
Decision making	Simple majority, unless otherwise specified		
Power to overturn		Board decisions, by absolute majority	State Assembly decisions, by absolute majority
Approx membership	10	104	Not fewer than 500

A member

- Concurrently a member of a Federal, State and Local Government conference
- Eligible to stand for any party office from the commencement of their membership
- May participate in a preselection only in the electorate in which they are resident, per the electoral roll, after 12 months' continuous membership

An example:

Jane lives in Paddington. She is therefore concurrently a member of the:

- Wentworth FEC
- Sydney SEC
- Woollahra LGC

She is eligible to stand for any Party office and, after 12 months' continuous membership, is eligible to vote in a preselection for any of the electorates of which she is a member.

Following a state boundary redistribution, Jane's home address shifts from the electorate of Sydney to Vacluse. Consequently, at a date set by State Assembly, Jane's membership of the Sydney SEC ceases and she is transferred to the Vacluse SEC, where she can also participate in a preselection without the need to observe a waiting period.

Tom lives in Goulburn, and is concurrently a member of the:

- Hume FEC
- Goulburn SEC
- Goulburn-Mulwaree LGC

Tom has been elected by his FEC as their State Assembly delegate. This means Tom is also a member of State Council. Because Tom lives more than 150km from the Sydney CBD, he is eligible to participate in State Assembly and State Council meetings via hybrid means. He can also vote in a Senate preselection electronically, without the need to travel to Sydney. As a member of State Assembly, Tom is ineligible to participate in preselections for the Legislative Council

Because Tom's Federal electorate of Hume is more than 10,000km² in size, in the event there is a preselection he can vote electronically without the need to travel to attend the preselection in person.

Preselecting candidates

	House of Representatives	Senate	Legislative Assembly	Legislative Council (province-based positions)	Legislative Council (at large positions)	Local Government
Who	All members of the FEC resident in the boundaries at the time the preselection is called State President (or delegate)	The Board State Assembly delegates	All members of the SEC resident in the boundaries at the time the preselection is called State President (or delegate)	10 delegates from each SEC (5 male, 5 female) contained in the province, 20 randomly selected State Council SEC delegates (who are not members of State Assembly) State President (or delegate)	150 randomly selected State Council SEC delegates who are not members of State Assembly	All members of the LGC resident in the boundaries at the time the preselection is called State President (or delegate)
Leader	Federal, or representative		Leader, or representative			N/A
Eligibility to vote	12 months continuous party membership					
When	Not later than 30 months after the preceding Federal election		Not later than 45 months after the preceding State election			For winnable positions, not later than three months prior to the election being held

	House of Representatives	Senate	Legislative Assembly	Legislative Council (province-based positions)	Legislative Council (at large positions)	Local Government
Additional selectors	10 State Assembly delegates (5 male/5 female) are randomly selected For every 50 local FEC selectors above 200, 10 State Assembly delegates (5 male/5 female) are randomly selected (to a maximum of 50)	Two additional delegates (one male, one female) from each FEC whose membership exceeds 200, and for every 100 thereafter (to a maximum of 10 per FEC)	10 State Council delegates (5 male/5 female), who are not members of State Assembly, are randomly selected For every 50 local SEC selectors above 150, a further 10 State Council delegates (five male and 5 female who are not members of State Assembly) are randomly selected (to a maximum of 50)	10 additional delegates (five male, five female) from each SEC whose membership exceeds 200, and for every 50 thereafter		N/A
Leader’s vote	Federal Leader’s vote increases by one for every 50 selectors		State Leader’s vote increases by one for every 50 selectors			N/A
	The Leader’s vote cannot be split – all votes must be allocated to a single candidate					
Spending limit	\$7.50 per member, with the spending cap to be advised by the State Director at the time the preselection is called					
Chair	Conference President	State President	Conference President	State President (or representative)	State President	Conference President
Tied vote	Conference President	State President	Conference President	State President	State President	Conference President

	House of Representatives	Senate	Legislative Assembly	Legislative Council (province-based positions)	Legislative Council (at large positions)	Local Government
Community selection	<p>Local members to select two most preferred candidates to proceed to a community selection meeting</p> <p>Party members' votes to be tallied separately from community members' votes, with an equal weighting applied to the two voting pools.</p> <p>The State President will be a selector, and the Conference President will chair the meeting.</p> <p>The Board will select the candidate if there is a tie.</p>		<p>Local members to select two most preferred candidates to proceed to a community selection meeting.</p> <p>Party members' votes to be tallied separately from community members' votes, with an equal weighting applied to the two voting pools.</p> <p>The State President will be a selector, and the Conference President will chair the meeting.</p> <p>The Board will select the candidate if there is a tie.</p>			