



Quiet Spaces Create Peaceful Minds

 Sorob®

Eco-Friendly Acoustic Panels

THE FUTURE FOR SOUND ABSORPTION

OVERVIEW

OUR COMMITMENT

At FSorb, we are motivated by improving human health and do so by creating eco-friendly acoustic products. Our mission is to help designers build beautiful spaces that reduce excess ambient noise while calming the human nervous system. With over 20 years in the acoustic business we stand behind FSorb as a low-cost, environmentally friendly, and durable product. If you want an acoustic solution that is completely safe to human health at an affordable price, then we are your resource.

INNOVATIVE PANELS

- Eco-friendly
- Simple to install
- Red List Free - Declare®
- Class A Fire Rated
- Low Cost
- VOC Free
- Stocked 48" x 96" sheets

APPLICATIONS

- Direct applied
- Suspended
- Furred
- Screens
- Baffles
- Lay-in ceiling
- Tack panels

USES

- K-12 & Higher Education
- Office Buildings
- Industrial/Manufacturing
- Government
- Theaters & Studios
- Stadiums
- Retail Establishments
- Gymnasiums
- Healthcare
- Public Spaces
- Wineries & Breweries
- Natatoriums
- Restaurants
- Traffic Noise

PANEL SPECIFICATIONS*

Thickness	Noise Reduction Co-Efficient (NRC)
1/2"	0.50
1"	0.70
2"	1.05

* FSorb panels are a standard 48" x 96" and can be cut to fit onsite or ordered in custom shapes and sizes in the colors shown on page 8

OUR CLIENTS

Google

DELTA

Microsoft

WASHINGTON STATE UNIVERSITY

amazon

Zillow

KENWORTH

Johnson Controls

OREGON HEALTH & SCIENCE UNIVERSITY

”

FSorb provided us a healthy acoustic product for our school at an economical price point we could not have received with any other product.

WESTSIDE SCHOOL

”

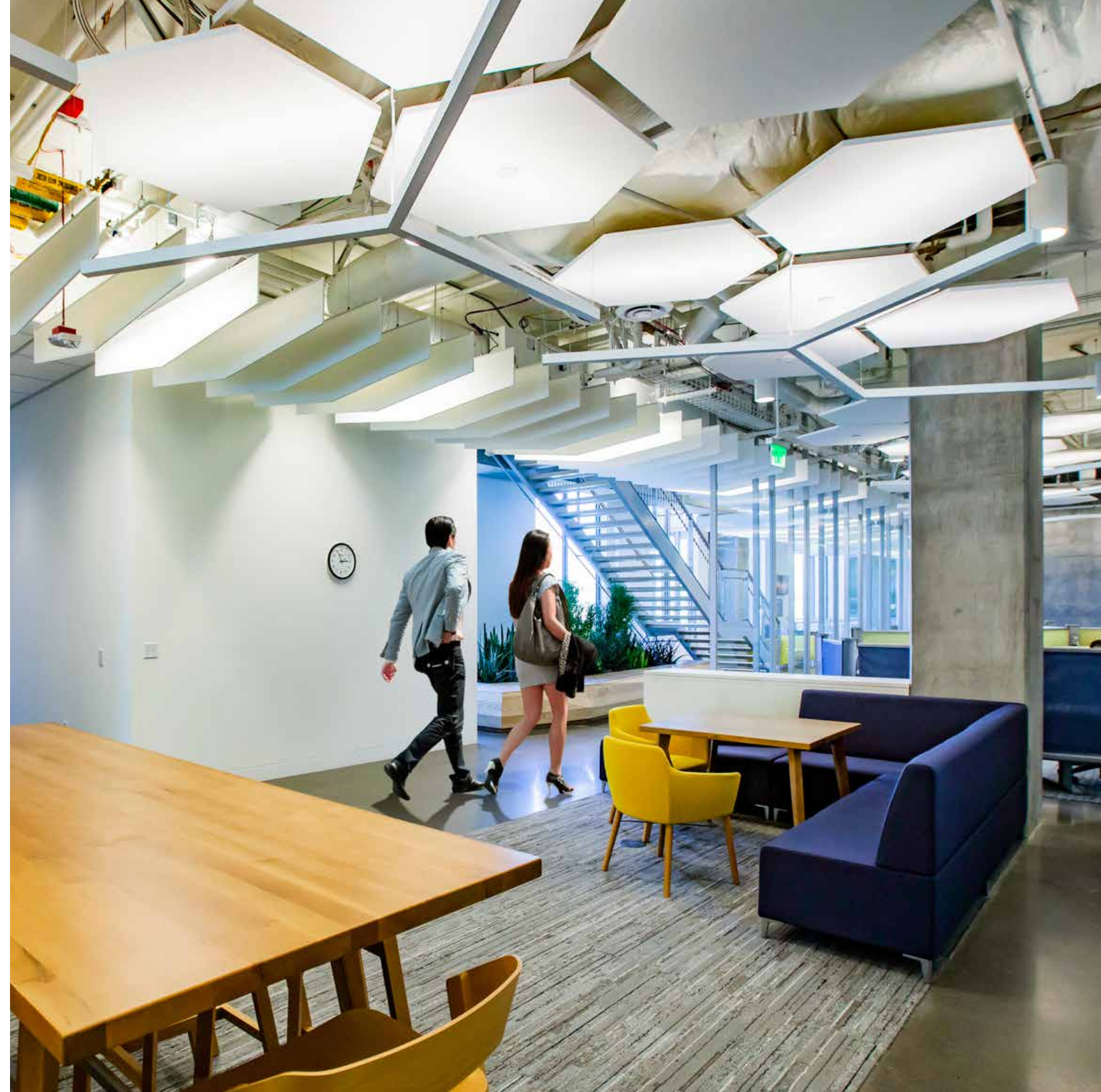
When they first opened it was really loud and uncomfortable. After they installed FSorb it changed a lot and we can now talk and understand each other without shouting.

**BOTTLE & BULL
PUB PATRON**

”

The sequencing of our construction required acoustic panels be installed before chilled beams in the exposed ceiling and before building enclosure. FSorb was moisture resistant, easy to clean, durable, and cheaper than the specified product.

SELLEN CONSTRUCTION



ENVIRONMENTAL RESPONSIBILITY

FSorb is an environmentally friendly acoustic product made from thermally bonded recycled polyester plastics. FSorb contains NO adhesives, paints, coatings, VOC's, formaldehyde, itchy particles, wood, agricultural or paper products.

PUBLICLY DISCLOSED HEALTH PRODUCT DECLARATION

FSorb has a Red List Free - Declare® Label to support HPD's for LEED and Living Building Challenge projects. They are located on the product section of the website or provided upon request.



PAINTS, COATINGS, ADHESIVES AND SEALANTS

NO paints, coatings, adhesives or sealants are used to manufacture FSorb, it is thermally bonded.

Material Name	Polyester
CAS Number	#68604-67-1
Proportion	100%
Contains 0.0 VOC's	

SOURCING OF RAW MATERIALS

The recycled polyester comes from PET plastic fibers which are sourced from a variety of locations near the manufacturer and vary depending on availability.

RECYCLED CONTENT

The recycled content varies depending on the availability of recycled PET fibers. The recycled content range is between 65% – 96% depending on product, color and location of manufacturing.

MANUFACTURING LOCATION

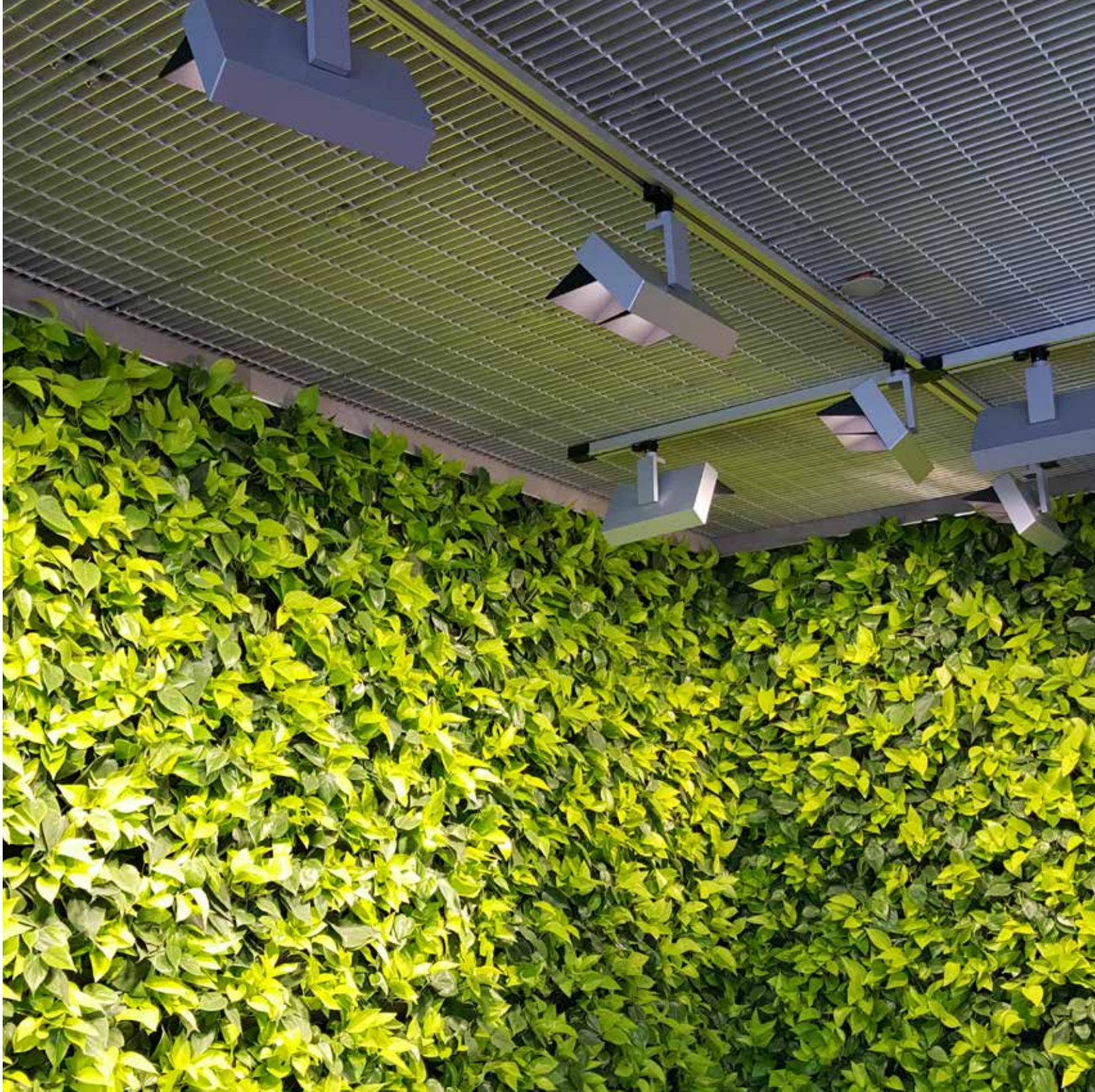
FSorb is manufactured and shaped in Redmond, Washington. Raw materials are sourced within the United States and South Korea. FSorb is distributed through a series of distribution yards throughout North America.

OTHER ECOLOGICAL INFORMATION

FSorb does not contain any ozone depleting chemicals and is not classified as a hazardous air pollutant.

END OF LIFE CONSIDERATIONS

FSorb products are recyclable at specialized polyester recycling facilities. FSorb is currently involved in creating a product take-back program to create closed-loop recycling for future product lines.



COLORS & MATERIALS

PREMIUM COLORS

Custom colors available upon request with minimum order of 2,350 sheets (75,000 sf)



LIGHT BEIGE
FS-300



CHESTNUT
FS-810



RED
FS-360



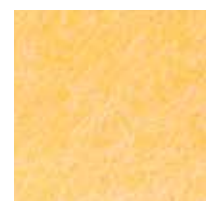
ROSE RED
FS-330



PINK
FS-390



ORANGE
FS-420



APRICOT
FS-450



YELLOW
FS-480



SKY BLUE
FS-720



TRUE BLUE
FS-660



OCEAN BLUE
FS-690



MIDNIGHT BLUE
FS-630



DARK PURPLE
FS-750



PURPLE
FS-780



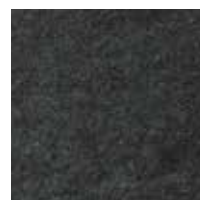
SEAFOAM GREEN
FS-600



MOSS GREEN
FS-570

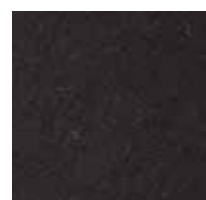


GREEN
FS-540

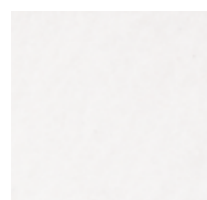


DARK GREEN
FS-510

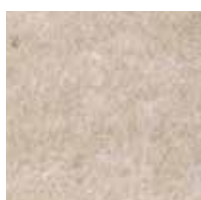
STANDARD COLORS



BLACK
FS-250



WHITE
FS-100



TAN
FS-190



LIGHT GREY
FS-130



GREY
FS-160



CHARCOAL
FS-220

MADE FROM RECYCLED PLASTIC

Our products do not have coatings or adhesives. Our approach is simple as we only use one material. FSorb is extruded, recycled content polyester, shaped and formed with heat.

MICROBE RESISTANT

Unlike cotton and acoustic fabrics that can attract moisture that generates mold and mildew

DURABLE

Easy to wash, and does not ding or break like paper and fiber based products

LONG LASTING

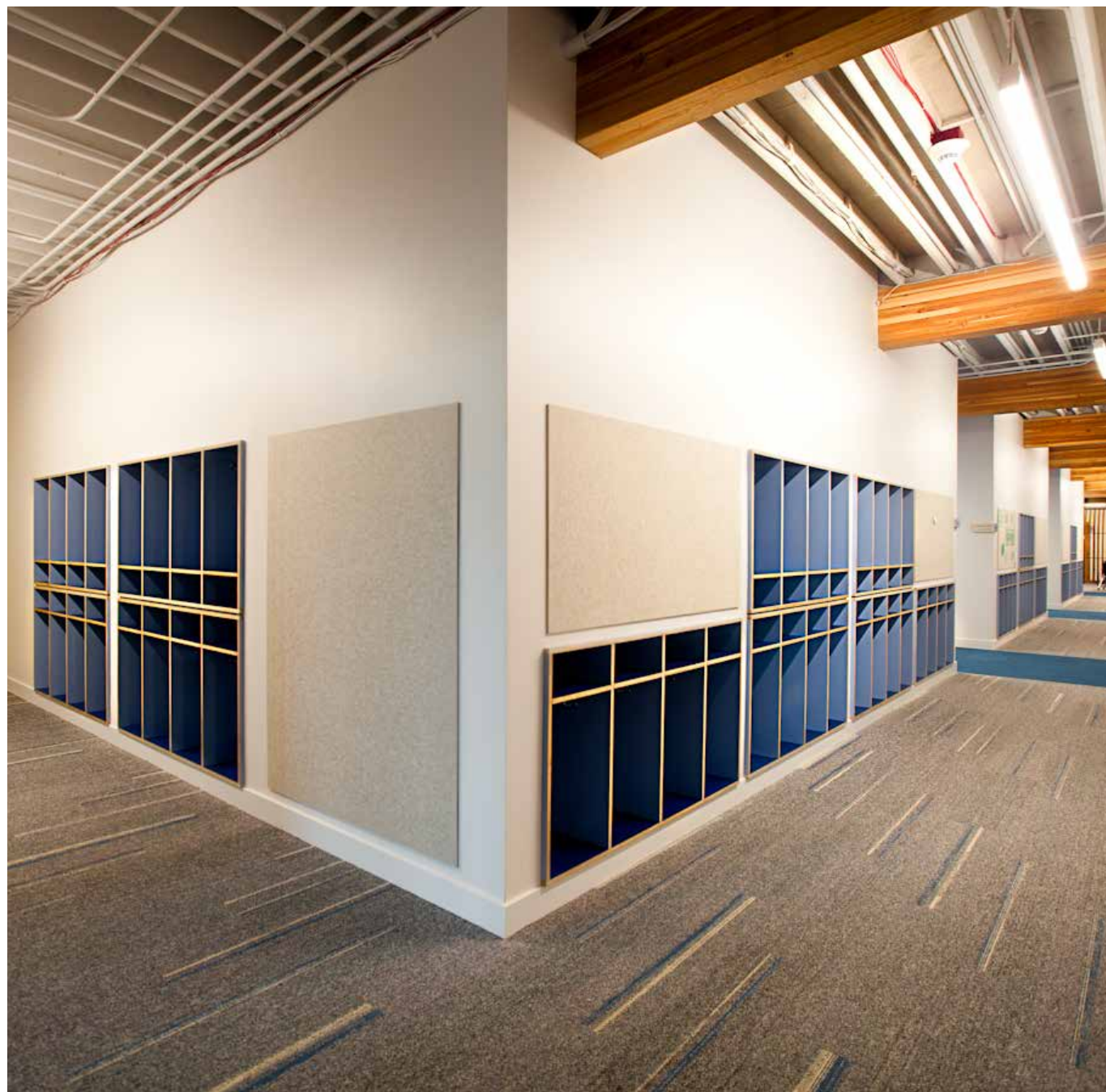
Ability to absorb sound and still look good for 50 years or more

SAFE

No chemicals, or itchy airborne particles for building users to ever deal with



1/2"



APPLICATIONS AND USAGE

The 1/2" is ideal for creating custom shapes, cutouts, and unique architectural forms. It has a great tackable surface and is a lower cost solution than fabric wrapped panels. Works well with spaces requiring minor acoustic correction. It is ideal for:

- Offices
- Universities
- Retail spaces

PANEL SPECIFICATIONS

Thickness	1/2"
NRC	0.50
Size	48" x 96"

Can be cut to fit onsite or ordered in custom sizes

STANDARD COLORS



Light Beige, Chestnut, Red, Rose Red, Pink, Orange, Apricot, Yellow, Sky Blue, True Blue, Ocean Blue, Midnight Blue, Dark Purple, Purple, Seafoam Green, Moss Green, Green, Dark Green, Black, White, Tan, Light Grey, Grey, and Charcoal

1"



APPLICATIONS AND USAGE

As the most commonly specified product, the 1" has a high NRC to thickness ratio with a low price point. It is great for spaces requiring acoustic correction and is excellent for absorbing voice ranges. It is ideal for:

- Industrial/Manufacturing
- Gymnasiums
- Natatoriums
- Offices
- Schools
- Universities
- Restaurants

PANEL SPECIFICATIONS

Thickness	1"
NRC	0.70
Size	48" x 96"

Can be cut to fit onsite or ordered in custom sizes. Premium color orders require a 100 sheet minimum.

STANDARD COLORS



Black, White, Tan, Light Grey, Grey, and Charcoal

Standard Colors typically ship within 3-5 business days

PREMIUM COLORS



Light Beige, Chestnut, Red, Rose Red, Pink, Orange, Apricot, Yellow, Sky Blue, True Blue, Ocean Blue, Midnight Blue, Dark Purple, Purple, Seafoam Green, Moss Green, Green, Dark Green, Black, White, Tan, Light Grey, Grey, and Charcoal

Call us for leadtime on Premium Colors - 100 sheet minimum (typically ship within 8-10 weeks)



APPLICATIONS AND USAGE

The highest NRC of the FSorb product line, the 2" is often used for baffles, and unique sound absorption requirements. It is also a great tackable surface and lower cost solution than fabric wrapped panels. It is ideal for:

- Auditoriums
- Office
- Sound Rooms
- Natatoriums
- Gymnasiums

PANEL SPECIFICATIONS

Thickness	2"
NRC	1.05
Size	48" x 96"

Can be cut to fit onsite or ordered in custom sizes. Premium color orders require a 100 sheet minimum.

STANDARD COLORS



Black, White, Tan, Light Grey, Grey, and Charcoal

Standard Colors typically ship within 3-5 business days

PREMIUM COLORS



Light Beige, Chestnut, Red, Rose Red, Pink, Orange, Apricot, Yellow, Sky Blue, True Blue, Ocean Blue, Midnight Blue, Dark Purple, Purple, Seafoam Green, Moss Green, Green, Dark Green, Black, White, Tan, Light Grey, Grey, and Charcoal

Call us for leadtime on Premium Colors - 100 sheet minimum (typically ship within 8-10 weeks)

CUSTOM SHAPING

You are the design genius and we are the expert manufacturer. Together there is unlimited potential. Our custom shapes division is able to create unique elements to address acoustic issues in a beautiful and creative way. We can work from a sketch, photo, or CAD drawing to build what you have imagined. Our goal is to give you the ultimate freedom in designing with FSorb materials. Whether it be a unique bevel, a custom cut shape, patterns cut out of a panel, or a 3D element with an integrated light fixture, we like creating new things with you.

Acoustic elements increase the extent to which sound waves hitting them are absorbed, in order to reduce their intensity and echo. FSorb is an easy material to cut and sculpt into shapes that re-define space while absorbing sounds that otherwise impact the nervous system.

At FSorb, we can cut and print anything. Share your ideas and we'll make it happen, or we are happy to provide creative solutions.



PRINTED, INLAY, SCORED, SCREENS (left-right)



CNC CUTTING EQUIPMENT



CHAINLINE BREWERY



QUIETGRID CELLULAR CLOUDS



APPLICATIONS AND USAGE

Quietgrid cloud systems are designed to absorb sound and provide a clean three dimensional feel within a space. They are ideal for:

- Offices
- Hotels
- Lobbies
- Conference rooms
- Gathering spaces

PANEL SPECIFICATIONS

Thickness	1/2"
NRC	0.95
Size	47", 71", 95"
Height	8"

ENDS



S-Straight C-Curved K-Chevron A-Angled

SHAPES



Transit

Ocean

Mountain

Metro

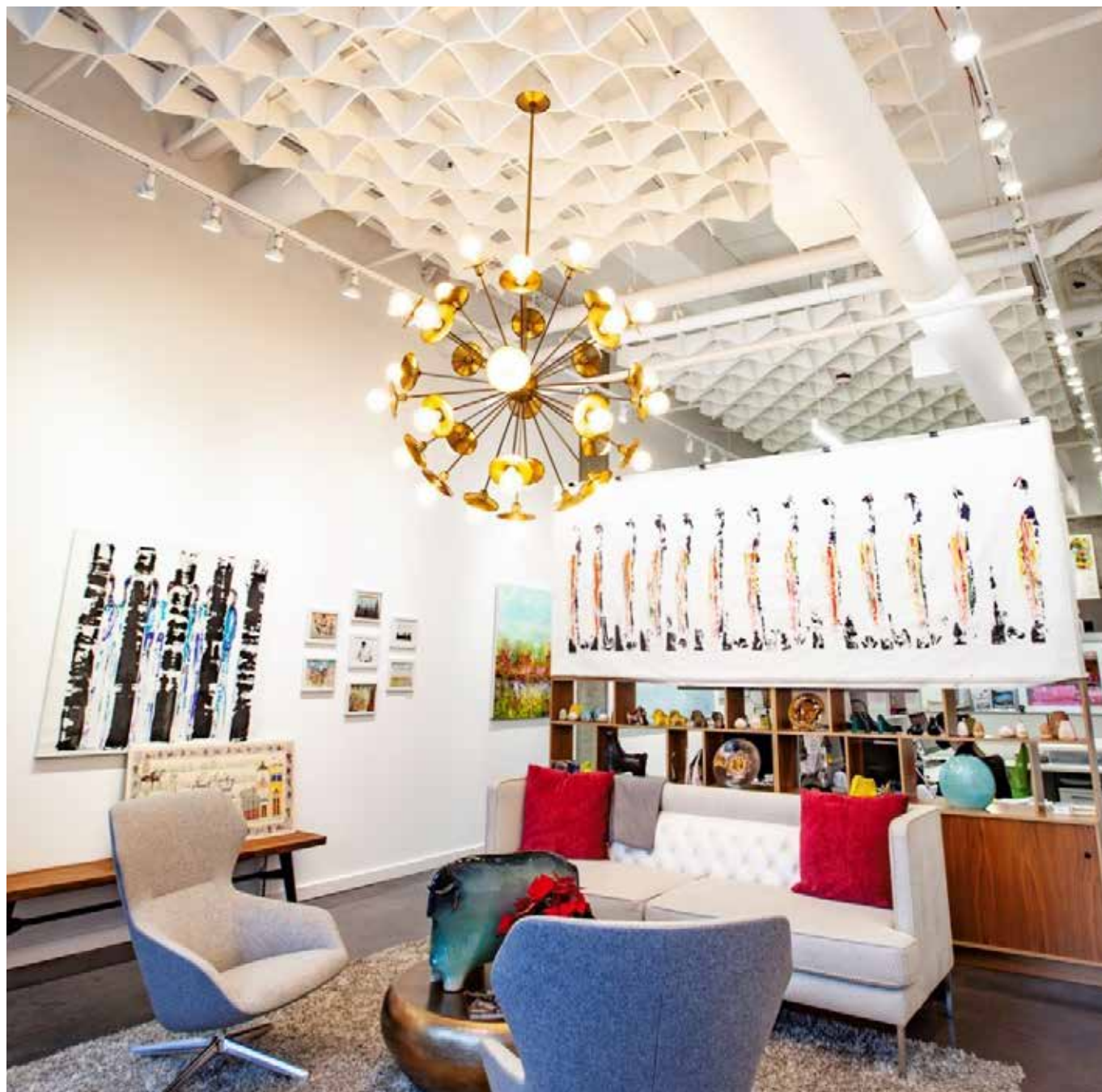
STANDARD COLORS



Light Beige, Chestnut, Red, Rose Red, Pink, Orange, Apricot, Yellow, Sky Blue, True Blue, Ocean Blue, Midnight Blue, Dark Purple, Purple, Seafoam Green, Moss Green, Green, Dark Green, Black, White, Tan, Light Grey, Grey, and Charcoal

Standard Colors typically ship within 3-5 business days

QUIETGRID 48



APPLICATIONS AND USAGE

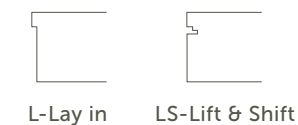
Quietgrid cloud systems are designed to absorb sound and provide a clean three dimensional feel within a space. They are interdependently supported with four hangers, and are ideal for:

- Offices
- Hotels
- Lobbies
- Conference rooms
- Gathering spaces

PANEL SPECIFICATIONS

Thickness	1/2"
NRC	0.95
Size	47" x 47"
Height	8" & 12"

CONNECTIONS



L-Lay in LS-Lift & Shift

SHAPES



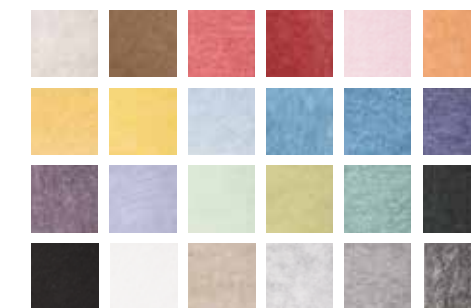
Transit

Ocean

Mountain

Metro

STANDARD COLORS



Light Beige, Chestnut, Red, Rose Red, Pink, Orange, Apricot, Yellow, Sky Blue, True Blue, Ocean Blue, Midnight Blue, Dark Purple, Purple, Seafoam Green, Moss Green, Green, Dark Green, Black, White, Tan, Light Grey, Grey, and Charcoal

Standard Colors typically ship within 3-5 business days

SILENTLINE BAFFLES



APPLICATIONS AND USAGE

Quietgrid cloud systems are designed to absorb sound and provide a clean three dimensional feel within a space. They are ideal for:

- Offices
- Hotels
- Lobbies
- Conference rooms
- Gathering spaces

PANEL SPECIFICATIONS

Thickness	1/2"	1"	2"
NRC	0.75	0.95	1.20
Size	47", 95" or custom		
Height	8" 12"		

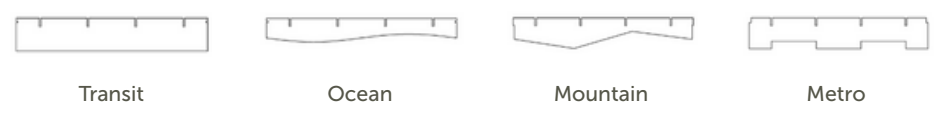
(Spacing 12" on center)

ENDS



S-Straight C-Curved K-Chevron A-Angled

SHAPES



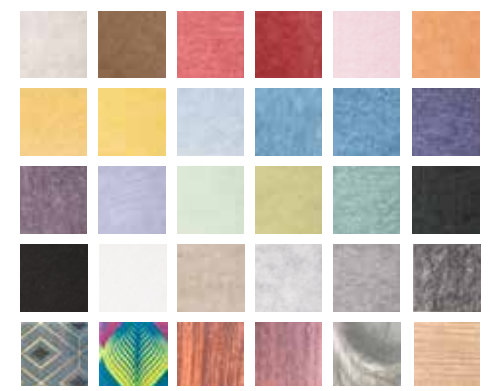
Transit

Ocean

Mountain

Metro

STANDARD COLORS



Light Beige, Chestnut, Red, Rose Red, Pink, Orange, Apricot, Yellow, Sky Blue, True Blue, Ocean Blue, Midnight Blue, Dark Purple, Purple, Seafoam Green, Moss Green, Green, Dark Green, Black, White, Tan, Light Grey, Grey, Charcoal, Patterns and Wood Grains

Standard Colors typically ship within 3-5 business days

SILENTLINE DIMENSIONAL BAFFLES



APPLICATIONS AND USAGE

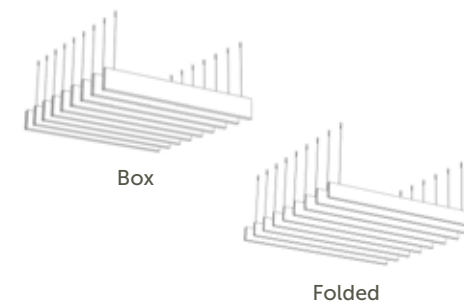
Installs to standard suspension systems. Can be hung independently with c-channel, i-lags, or cable gripper stainless steel hardware. These are ideal for:

- Education
- Offices
- Conference Rooms
- Restaurants
- Retail Spaces
- Lobbies

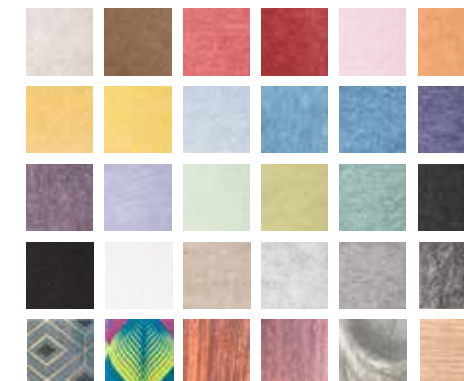
PANEL SPECIFICATIONS

Thickness	1/2"	Folded
NRC	1.15	1.30
Size	47" or 95" (Joined 48" or 96")	
Height	8"	

SHAPES



STANDARD COLORS



Light Beige, Chestnut, Red, Rose Red, Pink, Orange, Apricot, Yellow, Sky Blue, True Blue, Ocean Blue, Midnight Blue, Dark Purple, Purple, Seafoam Green, Moss Green, Green, Dark Green, Black, White, Tan, Light Grey, Grey, Charcoal, Patterns and Wood Grains

Standard Colors typically ship within 3-5 business days

HARDWARE OPTIONS



Contact us for additional
installation information at
info@fsorb.com

PRODUCT INSTALLATION

FSorb can be cut with a straight edge and a sharp utility knife, insulation knife, table saw or otherwise.

FSorb can be installed directly to a surface with the use of low VOC adhesives, mechanical clips, waferhead screws, staples or "buttons."

FSorb can be used as an acoustical core in stretched fabric systems. Mechanically fasten the core to the substrate. Low VOC adhesives may additionally be used. The high density face is installed outwards to the surface of the application. Fabrics can then be stretched within the tensioning tracks over the FSorb core.

FSorb can be furred off the wall or ceiling with the use of a hat channel or similar to create an air space behind it and increase NRC value.

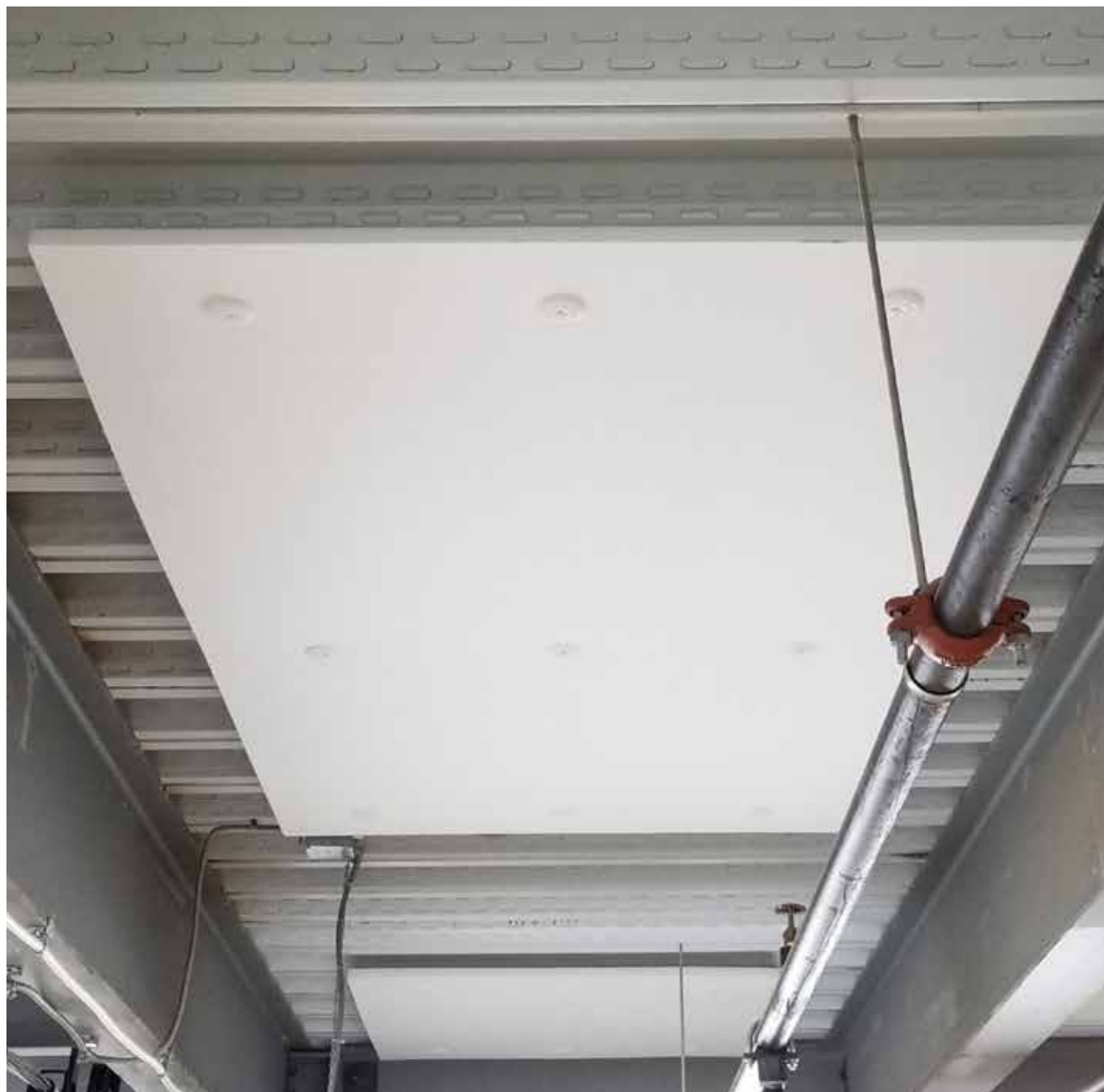
FSorb can be installed into ceiling suspension systems in sizes up to 48" x 96".

FSorb recommends a minimum of 8 attachment points 24" on center for suspended panels. Fasteners directly attached to a surface can also be spaced at 42" on center. Inset fasteners no more than 8" from the panel edges. Do not exceed 42" between fasteners for installations direct to walls or ceilings.

FSorb is created with heat and pressure, so the thickness within the panel can vary slightly. We recommend that reveals between panels be considered. The installers can also carefully install the panels to minimize variations in thicknesses.

FSorb can be cleaned and maintained as follows: brush off, blow off with compressed air, clean by using a dry cleaning sponge, damp white cloth or similar. Heavy soiling or stains may require a cleaner similar to Resolve Carpet Cleaner or Spot Shot which should be used as directed. Heavily damaged panels should be replaced.

EPIQ INDUSTRIAL ABSORBER



APPLICATIONS AND USAGE

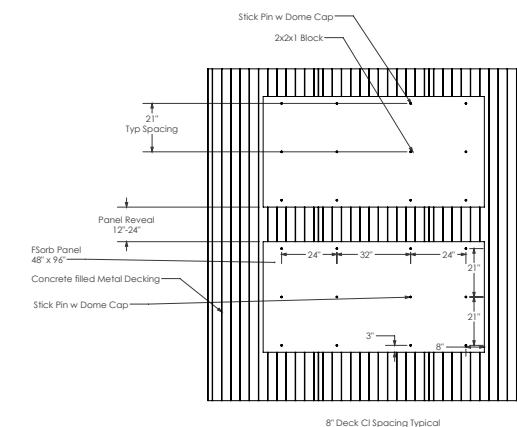
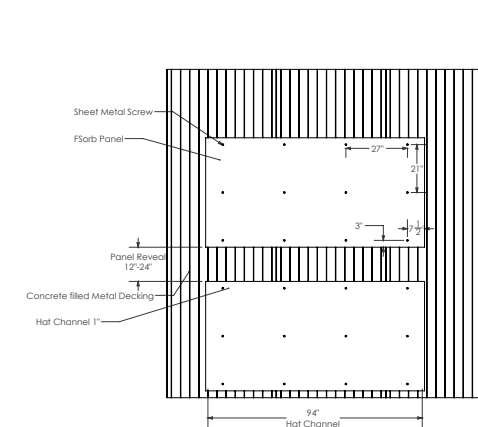
These are the most economical means of protecting employee hearing within the manufacturing or industrial setting, helping to eliminate costly hearing loss L&I claims.

- Manufacturing
- Industrial
- Distribution Centers

PANEL SPECIFICATIONS

Thickness	1/2" 1 1/8"
NRC	0.60 1.00
Size	48" x 96"

INSTALLATION



STANDARD COLORS



White

EXTERIOR ACOUSTIC PANELS



APPLICATIONS AND USAGE

These panels have many benefits - they are UV stable, fully weather resistant, no facings are required, cleanable, and come with a 10 year warranty. They are ideal for:

- Manufacturing
- Industrial
- Distribution Centers
- Transportation
- Chillers
- Swimming Pools
- Generators

PANEL SPECIFICATIONS

Thickness	2"
NRC	0.80
Size	48" x 96"

STANDARD COLORS



Grey and Tan

COMMON QUESTIONS

Does FSorb create custom colors and printing?

Creating custom colors is possible if the project is over 75,000 square feet and if there is a 16-18 week lead time to do so. We can easily print on the surface of FSorb.

Which panel thickness is best for my project?

The 1" thick FSorb panels are most commonly specified for spaces requiring acoustic treatment. Spaces with extreme sound issues and/or limited installation space may benefit from the 2" thick FSorb panels. Our ½" thick FSorb panels work well when a 1" or 2" panel is too thick for applications in tight areas.

What kind of adhesive do I use to direct apply FSorb?

We recommend using an acoustic tile adhesive or general purpose construction adhesive on clean, dry surfaces with no moisture or peeling paint.

Can FSorb panels be glued to concrete?

It is not recommended that FSorb be glued to painted concrete or to new concrete without moisture testing that meets adhesive manufacturer requirements. Additional prep to the concrete surface may be required.

Which FSorb Panels are used for tackable surfaces?

All FSorb products have a surface that can be used for push pins. The ½" is designed specifically for high use tackable panels.

Will Noise Reduction Coefficient (NRC) vary from surface mounted to suspended?

Yes. A suspended installation will increase the NRC rating by 20% over a surface mount installation.



Copine Restaurant in Seattle, WA
FSorb 1" thick Light Grey FS-130 clouds
Designed by Olson Kundig Architects
A calming and inviting dining experience



W residence in Puget Sound
FSorb 2" thick Grey FS-160 panels
Designed by Owner
A comfortable gathering space



OHSU, Portland, OR

Custom FSorb Silentline Mountain baffles

Designed by SRG Partnership

A calm and healthy space for patients and staff





info@fsorb.com

fsorb.com

844.313.7672