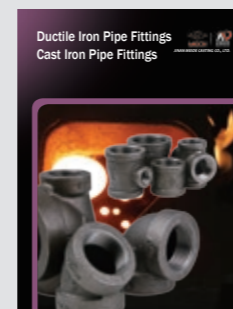
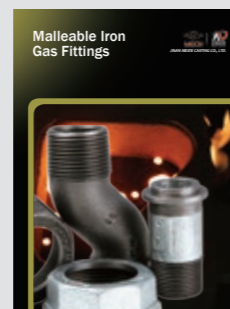
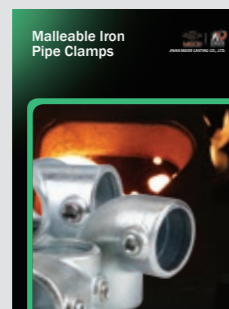
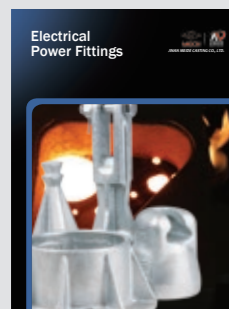
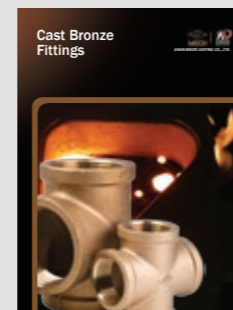
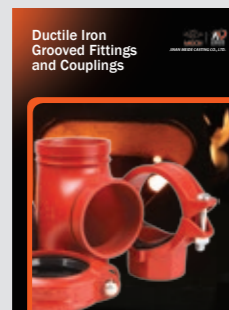


Cast Bronze Fittings



JIMSOAR INTERNATIONAL CORP.,

MECH FLOW SUPPLIES



JIMSOAR INTERNATIONAL CORP.

P.O. Box 96-10 Taipei, Taiwan

Phone: (886) 02-27040238

Fax: (886) 02-27040177

Email: jimsoar@ms13.hinet.net

Http://www.jimsoar.com

UPDATED 03/2014

More than 50 years of Foundry Experience

Company Profile

Jimsoar International Corp. was established in 1962. In the past decades, Jimsoar has seized each opportunity to consolidate its strength, and has finally developed into what it is today, a large-scale enterprise group with advanced technology, equipment and strong comprehensive strength, known for its complete range of products, large producing capacity, high quality and strong R&D strength. The company owns altogether one main factory, three branch factories, an independent accounting steel pipe company, and a science & technology park.

The company is the largest manufacturer in the fitting industry with the most complete range of products, supplying malleable iron fittings, grooved fittings, grooved couplings, valves, cast iron fittings, ductile iron fittings, steel pipe nipples and couplings, stainless steel nipples, brass pipe nipples, cast bronze fittings, steel pipes, pipe hangers and supports, electric fittings, etc.

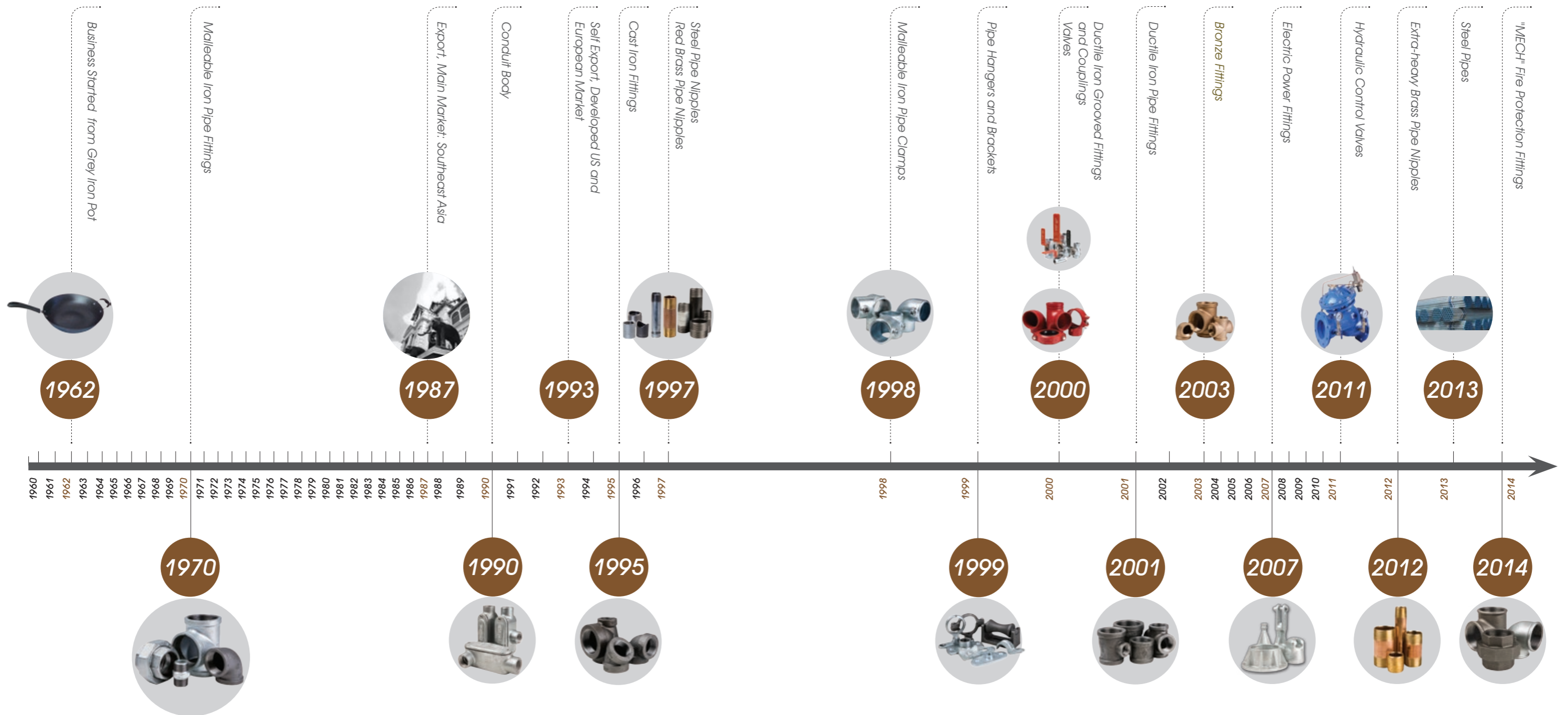
Over 50 years, Jimsoar has been a trusted name in piping solutions by offering high-quality products, service and support to the PVF industry continuously. We provide expertise and product solutions for a wide range of applications, plumbing, mechanical, industrial, air-conditioning and refrigeration, mining, oil, gas, fire protection, equipment and power system. Many of the company's application technology are advanced in the world, with more than 20 patents registered each year, and the company has presided over and participated in the drafting of many important national standards of the industry.

We organize the whole production process in accordance with ISO 9001 and ISO 14001. It has also the most complete certificates in the PVF industry, including UL/FM/NSF of US, CRN/cUL of Canada, DVGW/TUV/CE/VdS of Germany, BSI/LPCB of UK, SII of Israel, JIS of Japan, ABNT of Brazil, GOST-R of Russia, CNBOP of Poland, KS of South Korea, TSE of Turkey, PSB of Singapore, SIRIM of Malaysia, SABS of South Africa etc. The products are well distributed in more than 130 Countries and regions.

As an industry leader and key high-tech enterprise of the national torch plan, the company attaches great importance to environmental protection, energy-saving and emission-reduction. US-EEC recognizes MECH brand malleable iron pipe fittings as "the product to promote for the technology exchange of environmental protection". Protecting the environment is the duty of the company.

Customer satisfaction has always been the company's top objective, and we constantly stick to the principle: to provide customers with a value-added solution rather than simply delivering products.

Company History



State of the Art Equipment

High precision equipment is quality assurance. Jimsoar's 6 factories are all equipped with the most advanced facilities and equipment in the industry. The main production facilities include Sinto automatic molding line, Tokyu automatic molding line, Chinese 416 automatic vertical molding line, automatic molding sand mixers, cupola furnaces, electric furnaces, water-cooled longevous cupola furnaces, CNC vertical machining centers, CNC machines, NC vertical lathes, radial drills, Jimsoar Corp., proprietary automatic machines, hot-dipped galvanization line, automatic box sealing line, stereoscopic warehouse and so on.



Molding



Core Making



Sand Mulling



Melting



Sinto FCMX



Tokyu AMF-111055



Pouring



End Grinding Line



Threading, Air Pressure Test, and Anti-rust Treatment



Warehouse

Reliable Quality Assurance

Jimsoar is honored as the National enterprise technical center and is capable and qualified to conduct full series of tests and inspections including chemical checking, etc.

Inspection facilities include: spectrometer, carbon sulfur analyzer, metallurgical microscope, tensile strength testing equipment, pressure testing equipment, adhesive force testing equipment, CMM, hardness tester, etc.

From incoming inspection to finished product, quality is checked and monitored in the whole process. Each step of the manufacturing process is carefully documented, regularly reviewed for revision control and updating standard. Quality procedures are constantly monitored and updated to assure that only the highest and most consistent quality products are supplied to our valued customers.



Certificates



Cast Bronze Fittings

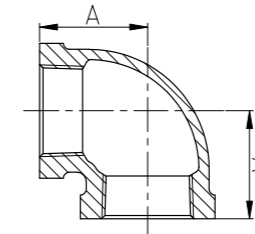
Class 125 Leaded and Lead Free

Material: ASTM B584
 Dimensions: ASME B16.15
 Flange Dimensions: ASME16.24, MSS SP-106
 Union Dimensions: A-A-59617
 Threads: ASME B1.20.1, ISO 7-1
 Size Available: 1/8" - 6"



90

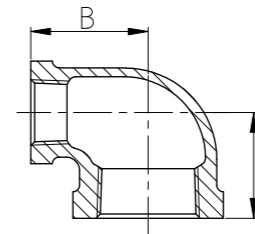
Elbow, 90°



Size	Inch	1/8	1/4	3/8	1/2	3/4	1
	mm	6	8	10	15	20	25
Dim. (mm)	A	14	18	21	26	30	36
	Size	Inch	1 1/4	1 1/2	2	2 1/2	3
Dim. (mm)	mm	32	40	50	65	80	100
	A	43	47	54	69	78	96

90R

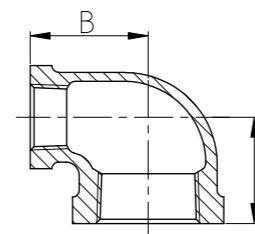
Reducing Elbow, 90°



Size	Inch	1/4x1/8	3/8x1/8	3/8x1/4	1/2x1/4	1/2x3/8
	mm	8x6	10x6	10x8	15x8	15x10
Dim. (mm)	A	17	20.5	19	24.6	24
	B	15	21.6	20	24.9	23
Size	Inch	3/4x1/8	3/4x1/4	3/4x3/8	3/4x1/2	1x1/4
	mm	20x6	20x8	20x10	20x15	25x8
Dim. (mm)	A	26	26.7	28.5	27	25.5
	B	27	27.4	28.7	28	29.5

90R

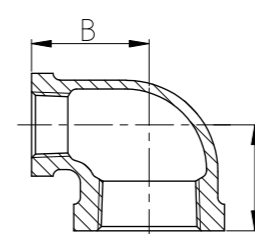
Reducing Elbow, 90°



Size	Inch	1x3/8	1x1/2	1x3/4	1 1/4x1/2	1 1/4x3/4
	mm	25x10	25x15	25x20	32x15	32x20
Dim. (mm)	A	30	30	33	34	35
	B	32.3	31	33	38.9	38
Size	Inch	1 1/4x1	1 1/2x1/2	1 1/2x3/4	1 1/2x1	1 1/2x1 1/4
	mm	32x25	40x15	40x20	40x25	40x32
Dim. (mm)	A	39	32	38.6	39	44
	B	41	38	44.5	44	46

90R

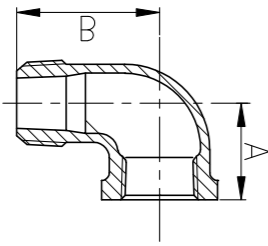
Reducing Elbow, 90°



Size	Inch	2x1/2	2x3/4	2x1	2x1 1/4	2x1 1/2	2 1/2x1 1/2
	mm	50x15	50x20	50x25	50x32	50x40	65x40
Dim. (mm)	A	37.5	40.5	43.9	48.3	48	54.9
	B	47.5	50	51.3	53.3	53	63.8
Size	Inch	2 1/2x2	3x2	3x2 1/2	4x2	4x2 1/2	4x3
	mm	65x50	80x50	80x65	100x50	100x65	100x80
Dim. (mm)	A	61	64	72	66.5	75.5	84
	B	66	73.4	76	84.5	87.5	91

92

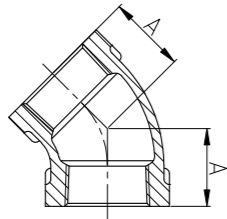
Street Elbow, 90°



Size	Inch	1/8	1/4	3/8	1/2	3/4	1
	mm	6	8	10	15	20	25
Dim. (mm)	A	14	18	21	26	30	36
	B	23	28	31	38	42	50
Size	Inch	1 1/4	1 1/2	2	2 1/2	3	4
	mm	32	40	50	65	80	100
Dim. (mm)	A	43	47	54	68.6	78.2	96.3
	B	57	62	73	98	113	144.5

120

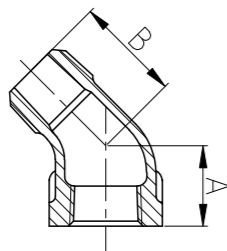
Elbow, 45°



Size	Inch	1/8	1/4	3/8	1/2	3/4	1
	mm	6	8	10	15	20	25
Dim. (mm)	A	11	14	16	20	23	27
	B	20	22	23	27	31	36
Size	Inch	1 1/4	1 1/2	2	2 1/2	3	4
	mm	32	40	50	65	80	100
Dim. (mm)	A	31	33	37	50	55	66
	B	42	46	54			

121

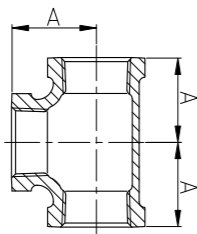
Street Elbow, 45°



Size	Inch	1/8	1/4	3/8	1/2	3/4	1
	mm	6	8	10	15	20	25
Dim. (mm)	A	11	14	16	20	23	27
	B	20	22	23	27	31	36
Size	Inch	1 1/4	1 1/2	2			
	mm	32	40	50			
Dim. (mm)	A	31	33	37			
	B	42	46	54			

130

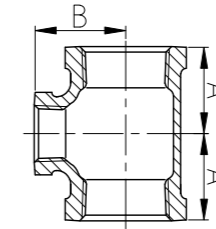
Tee



Size	Inch	1/8	1/4	3/8	1/2	3/4	1
	mm	6	8	10	15	20	25
Dim. (mm)	A	14	18	21	26	30	36
	B	20	22	23	27	31	36
Size	Inch	1 1/4	1 1/2	2	2 1/2	3	4
	mm	32	40	50	65	80	100
Dim. (mm)	A	43	47	54	69	78	96
	B	57	62	73	98	113	144.5

130R

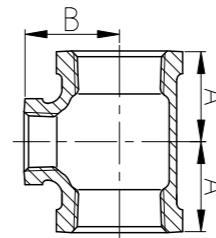
Reducing Tee



Size	Inch	1/4X1/8	3/8X1/8	3/8X1/4	1/2X1/4	1/2X3/8	3/4X1/4
	mm	8X6	10X6	10X8	15X8	15X10	20X8
Dim. (mm)	A	17	20.6	19	22	24	26.7
	B	15	21.6	20	22	23	27.4
Size	Inch	3/4X3/8	3/4X1/2	1X1/4	1X3/8	1X1/2	1X3/4
	mm	20X10	20X15	25X8	25X10	25X15	25X20
Dim. (mm)	A	25	27	28.2	28	30	33
	B	25	28	31.0	29	31	33

130R

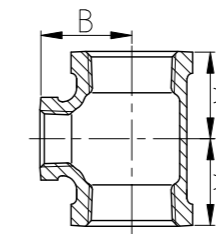
Reducing Tee



Size	Inch	1 1/4X1/2	1 1/4X3/4	1 1/4X1	1 1/2X1/2	1 1/2X3/4	1 1/2X1
	mm	32X15	32X20	32X25	40X15	40X20	40X25
Dim. (mm)	A	33	35	39	34	36	39
	B	36	38	41	39	41	44
Size	Inch	1 1/2X1 1/4	2X1/2	2X3/4	2X1	2X1 1/4	2X1 1/2
	mm	40X32	50X15	50X20	50X25	50X32	50X40
Dim. (mm)	A	44	37.9	37	40	45	48
	B	46	47.8	47	50	52	53

130R

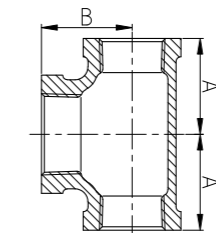
Reducing Tee



Size	Inch	2 1/2X1	2 1/2X1 1/4	2 1/2X1 1/2	2 1/2X2	3X3/4	3X1
	mm	65X25	65X32	65X40	65X50	80X20	80X25
Dim. (mm)	A	47.5	51.8	54.9	61	47.5	50.8
	B	60.2	62.2	63.8	66	66.3	67.6
Size	Inch	3X1 1/4	3X1 1/2	3X2	3X2 1/2	4X2	4X3
	mm	80X32	80X40	80X50	80X65	100X50	100X80
Dim. (mm)	A	55.1	58.2	64	72	70	84
	B	69.6	71.1	73	76	87	91

130R

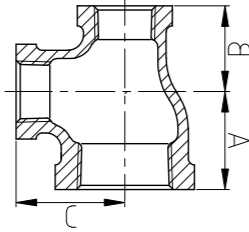
Reducing Tee



Size	Inch	3/8X3/8X1/2	1/2X1/2X3/4	3/4X3/4X1	1X1X1 1/4
	mm	10X10X15	15X15X20	20X20X25	25X25X32
Dim. (mm)	A	23	28	33	41
	B	24	27	33	39
Size	Inch	1X1X1 1/2	1 1/4X1 1/4X1 1/2	1 1/2X1 1/2X2	2X2X2 1/2
	mm	25X25X40	32X32X40	40X40X50	50X50X65
Dim. (mm)	A	44	46	53	66
	B	39	44	48	61

130R

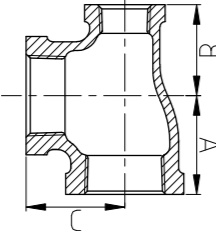
Reducing Tee



Size	Inch	3/8X1/4X1/4	1/2X3/8X3/8	3/4X1/2X1/2	1X3/4X3/4
	mm	10X8X8	15X10X10	20X15X15	25X20X20
Dim. (mm)	A	19	24	27	33
	B	18	21	26	30
	C	20	23	28	33
Size	Inch	11/4X1X1	11/2X11/4X11/4	2X11/2X11/2	21/2X2X2
	mm	32X25X25	40X32X32	50X40X40	65X50X50
Dim. (mm)	A	39	44	48	61
	B	36	43	47	57
	C	41	46	53	66

130R

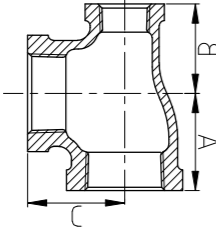
Reducing Tee



Size	Inch	3/8X1/4X3/8	1/2X3/8X1/2	3/4X1/2X3/4	1X1/2X1
	mm	10X8X10	15X10X15	20X15X20	25X15X25
Dim. (mm)	A	21	26	30	36
	B	20	23	28	31
	C	21	26	30	36
Size	Inch	1X3/4X1	11/4X1/2X11/4	11/4X3/4X11/4	11/4X1X11/4
	mm	25X20X25	32X15X32	32X20X32	32X25X32
Dim. (mm)	A	36	43	43	43
	B	33	36	38	41
	C	36	43	43	43

130R

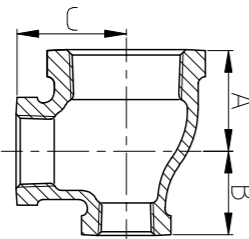
Reducing Tee



Size	Inch	11/2X3/4X11/2	11/2X11/4X11/2	2X11/2X2	
	mm	40X20X40	40X32X40	50X40X50	
Dim. (mm)	A	47	47	54	
	B	41	46	53	
	C	47	47	54	
Size	Inch				
	mm				
Dim. (mm)	A				
	B				
	C				

130R

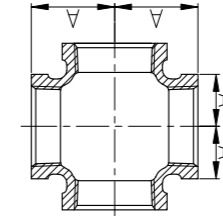
Reducing Tee



Size	Inch	1X3/4X1/2	1X1/2X3/4	11/4X1X3/4	11/4X3/4X1
	mm	25X20X15	25X15X20	32X25X20	32X20X25
Dim. (mm)	A	30	33	35	38.5
	B	27	28	33	35
	C	31	33	38	40
Size	Inch	11/2X11/4X1			
	mm	40X32X25			
Dim. (mm)	A	39			
	B	39			
	C	44			

180

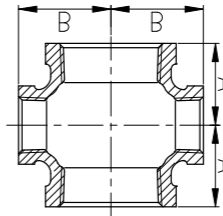
Cross



Size	Inch	1/8	1/4	3/8	1/2	3/4	1
	mm	6	8	10	15	20	25
Dim. (mm)	A	14	18	21	26	30	36
	B						
Size	Inch	11/4	11/2	2	21/2		
	mm	32	40	50	65		
Dim. (mm)	A	43	47	54	69		
	B						

180R

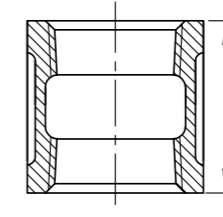
Reducing Cross



Size	Inch	3/4X1/2				
	mm	20X15				
Dim. (mm)	A	30.5				
	B	31				
Size	Inch					
	mm					
Dim. (mm)	A					
	B					

220

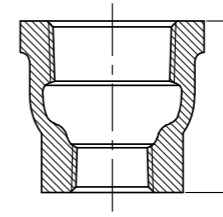
Coupling



Size	Inch	1/8	1/4	3/8	1/2	3/4	1
	mm	6	8	10	15	20	25
Dim. (mm)	A	20	25	27	33	36	43
	B						
Size	Inch	11/4	11/2	2	21/2	3	4
	mm	32	40	50	65	80	100
Dim. (mm)	A	47	49	56	73	81	94
	B						

240

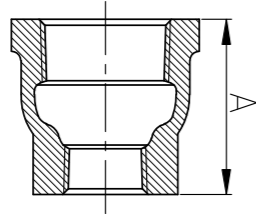
Reducing Coupling



Size	Inch	1/4X1/8	3/8X1/8	3/8X1/4	1/2X1/8	1/2X1/4
	mm	8X6	10X6	10X8	15X6	15X8
Dim. (mm)	A	22	23	26	29	29
	B					
Size	Inch	1/2X3/8	3/4X1/4	3/4X3/8	3/4X1/2	1X1/4
	mm	15X10	20X8	20X10	20X15	25X8
Dim. (mm)	A	30	31	31	35	38
	B					

240

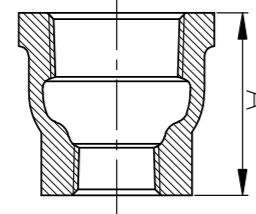
Reducing Coupling



Size	Inch	1X3/8	1X1/2	1X3/4	11/4X1/2	11/4X3/4	11/4X1
	mm	25X10	25X15	25X20	32X15	32X20	32X25
Dim. (mm)	A	38	38	40	42	42	45
	C	28	28	28	28	28	28
Size	Inch	11/2X1/2	11/2X3/4	11/2X1	11/2X11/4	2X1/2	2X3/4
	mm	40X15	40X20	40X25	40X32	50X15	50X20
Dim. (mm)	A	45	45	45	48	52	52
	C	28	28	28	28	28	28

240

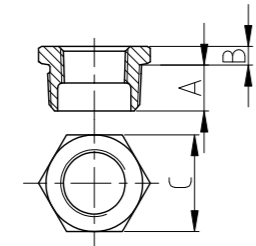
Reducing Coupling



Size	Inch	2X1	2X11/4	2X11/2	21/2X11/4	21/2X11/2	21/2X2
	mm	50X25	50X32	50X40	65X32	65X40	65X50
Dim. (mm)	A	52	52	52	83	83	83
	C	28	28	28	28	28	28
Size	Inch	3X11/2	3X2	3X21/2	4X2	4X21/2	4X3
	mm	80X40	80X50	80X65	100X50	100X65	100X80
Dim. (mm)	A	94	94	94	111	111	111
	C	28	28	28	28	28	28

241

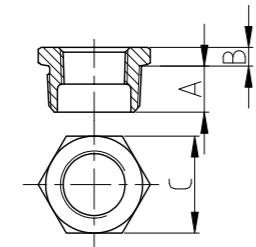
Outside Hex Bushing



Size	Inch	1/4X1/8	3/8X1/8	3/8X1/4	1/2X1/8	1/2X1/4	1/2X3/8
	mm	8X6	10X6	10X8	15X6	15X8	15X10
Dim. (mm)	A	11	12	12	14	14	14
	B	4	4	4	5	5	5
	C	16	17	17	22	22	22
Size	Inch	3/4X1/8	3/4X1/4	3/4X3/8	3/4X1/2	1X1/2	1X3/4
	mm	20X6	20X8	20X10	20X15	25X15	25X20
Dim. (mm)	A	16	16	16	16	19	19
	B	6	6	6	6	6	6
	C	29	29	29	29	36	36

241

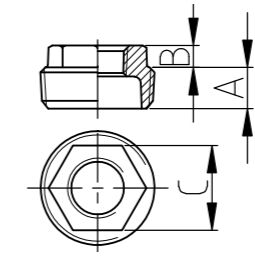
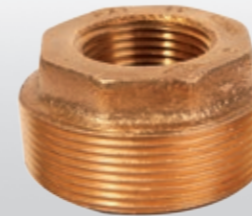
Outside Hex Bushing



Size	Inch	11/4X3/4	11/4X1	11/2X1	11/2X11/4	2X11/4
	mm	32X20	32X25	40X25	40X32	50X32
Dim. (mm)	A	20	20	21	21	22
	B	7	7	8	8	9
	C	45	45	51	51	63
Size	Inch	2X11/2	21/2X11/2	21/2X2	3X2	3X21/2
	mm	50X40	65X40	65X50	80X50	80X65
Dim. (mm)	A	22	27	27	29	29
	B	9	11	9	12	10
	C	63	68	76	83	98

241N

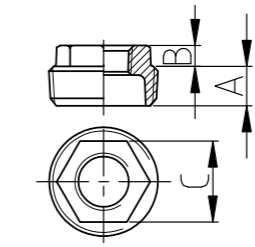
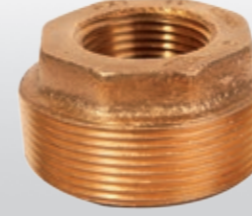
Inside Hex Bushing



Size	Inch	1X1/4	1X3/8	11/4X1/4	11/4X3/8	11/4X1/2	11/2X1/4
	mm	25X8	25X10	32X8	32X10	32X15	40X8
Dim. (mm)	A	19	19	20	20	20	21
	B	8	8	9	9	9	9
	C	28	28	28	28	34	28
Size	Inch	11/2X3/8	11/2X1/2	11/2X3/4	2X1/2	2X3/4	2X1
	mm	40X10	40X15	40X20	50X15	50X20	50X25
Dim. (mm)	A	21	21	21	22	22	22
	B	9	9	9	10	10	10
	C	28	34	41	34	41	50

241N

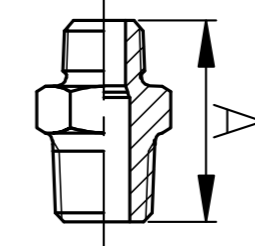
Inside Hex Bushing



Size	Inch	21/2X1	21/2X11/4	3X1/2	3X3/4	3X1
	mm	65X25	65X32	80X15	80X20	80X25
Dim. (mm)	A	27	27	29	29	29
	B	11	11	12	12	12
	C	50	61	34	41	50
Size	Inch	3X11/4	3X11/2	4X11/2	4X2	4X21/2
	mm	80X32	80X40	100X40	100X50	100X65
Dim. (mm)	A	29	29	31	31	31
	B	12	12	15	15	15
	C	61	68	68	83	98

245

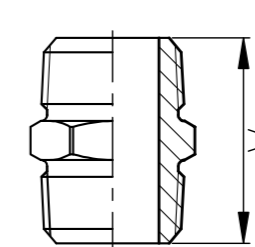
Reducing Hexagon Nipple



Size	Inch	1/4X1/8	3/8X1/4	1/2X3/8		
	mm	8X6	10X8	15X10		
Dim. (mm)	A	26	31	39		
	C					
Size	Inch					
	mm					
Dim. (mm)	A					
	C					

280

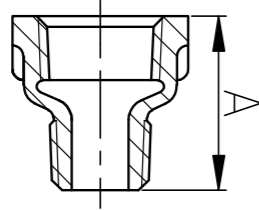
Hexagon Nipple



Size	Inch	1/8	1/4	3/8	1/2	3/4	1
	mm	6	8	10	15	20	25
Dim. (mm)	A	25	30	31.5	39	41	50
	B						
	C						
Size	Inch	11/4	11/2	2	21/2	3	
	mm	32	40	50	65	80	
Dim. (mm)	A	55	57	66	73	81	
	C						

246

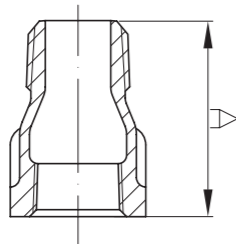
Reducing Extension Piece



Size	Inch	1/4X1/8	3/8X1/4	1/2X3/8	1/2X1/2	3/4X1/2
	mm	8X6	10X8	15X10	15X15	20X15
Dim. (mm)	A	22.5	27.5	30	33	35
Size	Inch					
	mm					
Dim. (mm)	A					

529A

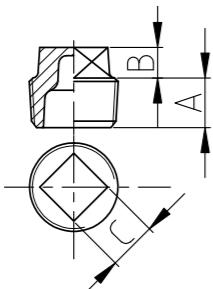
Extension Piece



Size	Inch	1/2	3/4			
	mm	15	20			
Dim. (mm)	A	42	47			
Size	Inch					
	mm					
Dim. (mm)	A					

291

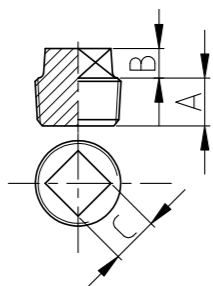
Cored Plug



Size	Inch	1/2	3/4	1	1 1/4	1 1/2
	mm	15	20	25	32	40
Dim. (mm)	A	14	14	18	18	19
	B	10	11	13	14	16
	C	14.3	15.8	20.6	23.8	28.5
Size	Inch	2	2 1/2	3	4	
	mm	50	65	80	100	
Dim. (mm)	A	19	27	29	31	
	B	17	19	20	23	
	C	33.3	38.1	42.8	57.1	

291S

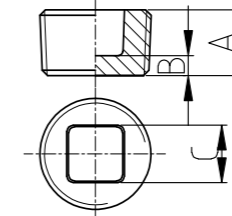
Solid Plug



Size	Inch	1/8	1/4	3/8	1/2	3/4	1
	mm	6	8	10	15	20	25
Dim. (mm)	A	7	10	10	14	14	18
	B	6	7	8	10	11	13
	C	7.1	9.5	11.1	14.3	15.8	20.6
Size	Inch	1 1/4	1 1/2	2	2 1/2	3	4
	mm	32	40	50	65	80	100
Dim. (mm)	A	18	19	19	27	29	31
	B	14	16	17	19	20	23
	C	23.8	28.5	33.3	38.1	42.8	57.1

291N

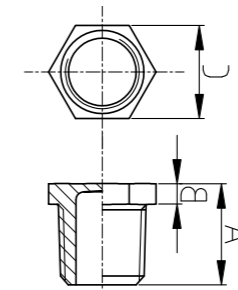
Countersunk Plug



Size	Inch	1/2	3/4	1	1 1/4	1 1/2
	mm	15	20	25	32	40
Dim. (mm)	A	14	14	18	18	19
	B	2.3	2.5	2.8	3.0	3.3
	C	9.5	12.7	12.7	19.1	19.1
Size	Inch	2	2 1/2	3	4	
	mm	50	65	80	100	
Dim. (mm)	A	19	27	29	31	
	B	3.8	4.3	4.8	5.6	
	C	22.2	28.6	34.9	50.8	

292

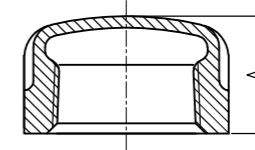
Hex Head Plug



Size	Inch	1/8	1/4	3/8	1/2	3/4
	mm	6	8	10	15	20
Dim. (mm)	A	14	18	19	25	26
	B	4.3	4.3	4.3	5	6
	C	12	15	18	23	28
Size	Inch					
	mm					
Dim. (mm)	A					
	B					
	C					

300

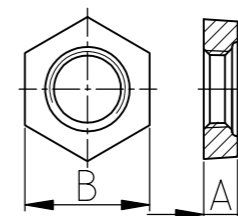
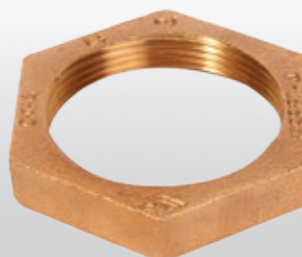
Cap



Size	Inch	1/8	1/4	3/8	1/2	3/4	1
	mm	6	8	10	15	20	25
Dim. (mm)	A	12	15	16	19	21	25
Size	Inch	1 1/4	1 1/2	2	2 1/2	3	4
	mm	32	40	50	65	80	100
Dim. (mm)	A	28	29	34	43	46	53

310

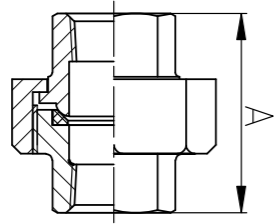
Locknut



Size	Inch	1/8	1/4	3/8	1/2	3/4	1
	mm	6	8	10	15	20	25
Dim. (mm)	A	4.8	6.4	7.1	7.9	8.6	9.7
	B	17.5	21.3	25.4	30	36.3	44.5
Size	Inch	1 1/4	1 1/2	2			
	mm	32	40	50			
Dim. (mm)	A	10.7	11.9	13.5			
	B	53.3	59.7	73.2			

342

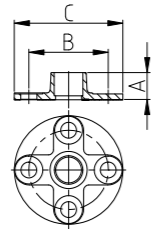
Union



Size	Inch	1/8	1/4	3/8	1/2	3/4	1
	mm	6	8	10	15	20	25
Dim. (mm)	A	32	37	41	44	49.5	52.5
	B	32	40	50	65	80	100
Size	Inch	1 1/4	1 1/2	2	2 1/2	3	4
	mm	32	40	50	65	80	100
Dim. (mm)	A	57.5	61.5	70	82	89	98
	B	57.5	61.5	70	82	89	98

321H

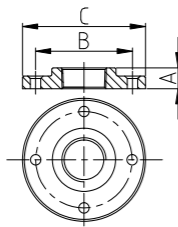
Companion Solder Flange



Size	Inch	1	1 1/4	1 1/2	2	2 1/2
	mm	25	32	40	50	65
Dim. (mm)	A	25	27.4	30.4	36.7	40.8
	B	79.5	90	98.5	120.5	140
Dim. (mm)	C	108	117.5	127	152.4	177.8
	A	45.5	58			
Size	Inch	3	4			
	mm	80	100			
Dim. (mm)	B	152.5	190.5			
	C	190.5	228.6			

321J

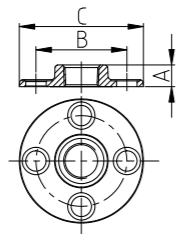
Floor Flange



Size	Inch	1/2	3/4	1	1 1/4	1 1/2
	mm	15	20	25	32	40
Dim. (mm)	A	13.5	15.3	18	19	22
	B	62	62	75	75	86.5
Dim. (mm)	C	88	88	102	102	114
	A	25				
Size	Inch	2				
	mm	50				
Dim. (mm)	B	120.7				
	C	150				

321L

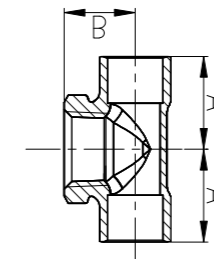
Companion Threaded Flange



Size	Inch	1/2	3/4	1	1 1/4	1 1/2
	mm	15	20	25	32	40
Dim. (mm)	A	15	15.8	17.6	20.6	22.4
	B	60.5	70	79.5	90	98.5
Dim. (mm)	C	89	98.5	108	117.5	128
	A	25.4	28.5	30.3	33.3	40
Size	Inch	2	2 1/2	3	4	6
	mm	50	65	80	100	150
Dim. (mm)	B	120.5	140	152.5	190.5	241.3
	C	151	179.5	192	231	280

F130

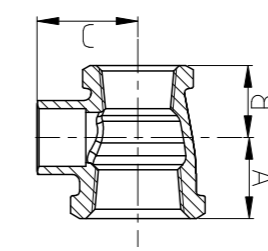
Adapter Tee



Size	Inch	1/2				
	mm	15				
Dim. (mm)	A	27				
	B	21.5				
Size	Inch					
	mm					
Dim. (mm)	A					
	B					

F130R

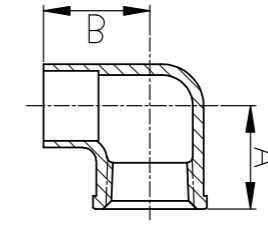
Reducing Adapter Tee



Size	Inch	3/4X1/2				
	mm	20X15				
Dim. (mm)	A	22				
	B	20				
Dim. (mm)	C	27.5				
	A					
Size	Inch					
	mm					
Dim. (mm)	B					
	C					

91

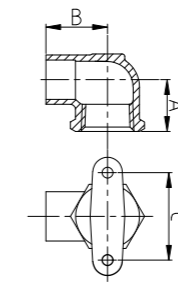
Adapter 90° Elbow



Size	Inch	1/2	3/4			
	mm	15	20			
Dim. (mm)	A	23.5	29			
	B	24.5	32.5			
Size	Inch					
	mm					
Dim. (mm)	A					
	B					

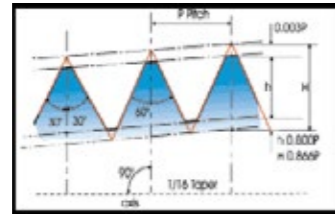
91C

Drop Ear 90° Elbow

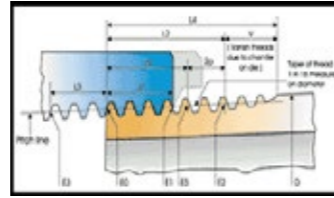


Size	Inch	1/2				
	mm	15				
Dim. (mm)	A	21				
	B	25				
Dim. (mm)	C	35.5				
	A					
Size	Inch					
	mm					
Dim. (mm)	B					
	C					

Basic Dimension for American Standard Pipe Threads



Taper thread
 $H = 0.866025 \quad p = 0.866025/n$
 $h = 0.800 \quad p = 0.800/n$



Taper thread
 $L2 = (0.8D + 6.8) \quad 1/n = (0.80D + 6.8)p$

Nominal Pipe Size (inches)	O.D. of Pipe (D)	Threads /in (N)	Pitch of Thread (P)	Pitch Dia. at Beginning of External Thread (E0)	Handtight Engagement		Effective Thread, External			Depth of Thread h	
					Length ² (L1)		Diam. ² (E1)	Length ⁴ (L2)			Diam. (E2)
					Inch	Thread		Inch	Thread		
1/8	0.405	27.0	0.03704	0.36351	0.1615	4.36	0.37360	0.2639	7.12	0.38000	0.029
1/4	0.540	18.0	0.05556	0.47739	0.2278	4.10	0.49163	0.4018	7.23	0.50250	0.044
3/8	0.675	18.0	0.05556	0.61201	0.2400	4.32	0.62701	0.4078	7.34	0.63750	0.044
1/2	0.840	14.0	0.07143	0.75843	0.3200	4.48	0.77843	0.5337	7.47	0.79179	0.057
3/4	1.050	14.0	0.07143	0.96768	0.3390	4.75	0.98887	0.5457	7.64	1.00179	0.057
1	1.315	11.5	0.08696	1.21363	0.4000	4.60	1.23863	0.6826	7.85	1.25630	0.069
1 1/4	1.660	11.5	0.08696	1.55713	0.4200	4.83	1.58338	0.7068	8.13	1.60130	0.069
1 1/2	1.900	11.5	0.08696	1.79609	0.4200	4.83	1.82234	0.7235	8.32	1.84130	0.069
2	2.375	11.5	0.08696	2.26902	0.4360	5.01	2.29627	0.7565	8.70	2.31630	0.069
2 1/2	2.875	8.0	0.12500	2.71953	0.6820	5.46	2.76216	1.31375	9.10	2.79062	0.100
3	3.500	8.0	0.12500	3.34062	0.7660	6.13	3.38850	1.2000	9.60	3.41562	0.100
3 1/2	4.000	8.0	0.12500	3.83750	0.8210	6.57	3.88881	1.2500	10.00	3.91562	0.100
4	4.500	8.0	0.12500	4.33438	0.8440	6.75	4.38712	1.3000	10.40	4.41562	0.100
5	5.563	8.0	0.12500	5.39073	0.9370	7.50	5.44929	1.4063	11.25	5.47862	0.100
6	6.625	8.0	0.12500	6.44609	0.9580	7.66	6.50597	1.5125	12.10	6.54062	0.100

Nominal Pipe Size (inches)	Length, L1 Plane to L2 Plane External Thread (L2-L1)		Wrench Makeup Length for Internal Thread ⁷		Diam. (E3)	Vanish Thread (V)		Overall ⁸ Length External Thread (L4)	Nominal Complete External Thread ⁵		Height of Thread (h)	Increase in Diam./Thread (0.0625/n)	Basic ⁶ Minor Diam. At Small End of Pipe (K0)
	Inch	Thread	Inch	Thread		Inch	Thread		Length (L5)	Diam. (E5)			
	1/8	0.1024	2.76	0.1111	3	0.35656	0.1285	3.47	0.3924	0.1898	0.37537	0.02963	0.00231
1/4	0.1740	3.13	0.1667	3	0.46697	0.1928	3.47	0.5946	0.2907	0.49556	0.04444	0.00347	0.4329
3/8	0.1678	3.02	0.1667	3	0.60160	0.1928	3.47	0.6006	0.2967	0.63056	0.04444	0.00347	0.5676
1/2	0.2137	2.99	0.2143	3	0.74504	0.2478	3.47	0.7815	0.3909	0.78286	0.05714	0.00446	0.7013
3/4	0.2067	2.89	0.2143	3	0.95429	0.2478	3.47	0.7935	0.4029	0.99286	0.05714	0.00446	0.9105
1	0.2828	3.25	0.2609	3	1.19733	0.3017	3.47	0.9845	0.5089	1.24543	0.06957	0.00543	1.1441
1 1/4	0.2868	3.30	0.2609	3	1.54083	0.3017	3.47	1.0085	0.5329	1.59043	0.06957	0.00543	1.4876
1 1/2	0.3035	3.49	0.2609	3	1.77978	0.3017	3.47	1.0252	0.5496	1.83043	0.06957	0.00543	1.7265
2	0.3205	3.69	0.2609	3	2.25272	0.3017	3.47	1.0582	0.5826	2.30543	0.06957	0.00543	2.1995
2 1/2	0.4555	3.64	0.2500	2	2.70391	0.4337	3.47	1.5712	0.8875	2.77500	0.10000	0.00781	2.6195
3	0.4340	3.47	0.2500	2	3.32500	0.4337	3.47	1.6337	0.9500	3.40000	0.10000	0.00781	3.2406
3 1/2	0.4290	3.43	0.2500	2	3.82188	0.4337	3.47	1.6837	1.0000	3.90000	0.10000	0.00781	3.7375
4	0.4560	3.65	0.2500	2	4.31875	0.4337	3.47	1.7337	1.0500	4.40000	0.10000	0.00781	4.2344
5	0.4693	3.75	0.2500	2	5.37511	0.4337	3.47	1.8400	1.1563	5.46300	0.10000	0.00781	5.2907
6	0.5545	4.44	0.2500	2	6.43047	0.4337	3.47	1.9462	1.2625	6.52500	0.10000	0.00781	6.3461

Note: This information is selected from the International Standard for Pipe Threads, ASME B1.20.1.

