



傑濠實業有限公司

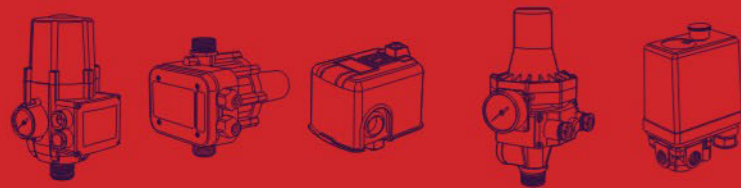
Jimsoar International Corp.,



傑濠實業有限公司

Jimsoar International Corp.,

# OUYI ELECTRIC



JIMSOAR INTERNATIONAL CORP.

P. O. BOX 96-10 TAIPEI, TAIWAN



JIMSOAR INTERNATIONAL CORP.

P.O. BOX 96-10 TAIPEI, TAIWAN  
Tel : 886-2-27040238 Fax: 886-2-27040177  
e-mail : jimsoar@ms13.hinet.net  
<http://www.jimsoar.com>

本目录所有产品规格、尺寸、重量、仅供参考。定单作业时以实物为准。如有更改，恕不另行通知。  
Products shall be subject to any changes without additional notices.

DC (12V 24V 36V 48V)  
DC/AC AUTOMATIC PUMP CONTROL  
(220V/380V) WATER LEVEL CONTROLLER  
PRESSURE SWITCH  
FLOAT SWITCH  
ISO9001:2008 CE

JIMSOAR INTERNATIONAL CORP.

<http://www.jimsoar.com>

JIMSOAR INTERNATIONAL CORP.

<http://www.jimsoar.hinet.net>

## INTRODUCTION 企业简介

傑濠實業电器有限公司专注于水泵压力控制器，主营水泵电子压力开关，水泵机械压力开关，浮球开关，以及各种水泵配件。

我司拥有雅士霸JIMSOAR®品牌，旗下有9大类水泵电子压力开关，10大类机械开关，同时经营浮球开关等水泵配件，我司拥有自营进出口权，和一般纳税人资格，公司坐落在温岭市大溪镇注塑园区。

Produce the automatic pump control and mechanical pressure switch, and float switch, and the other pump parts. We own the brand **JIMSOAR®**, We have 9 series electric switch and ten series ,mechanical pressure switch ,we also have the export license and VAT certificate, And all series pump control have the CE certificate ,and IEC report ,and SGS-COC report



以质量求口碑 以科技造福人类

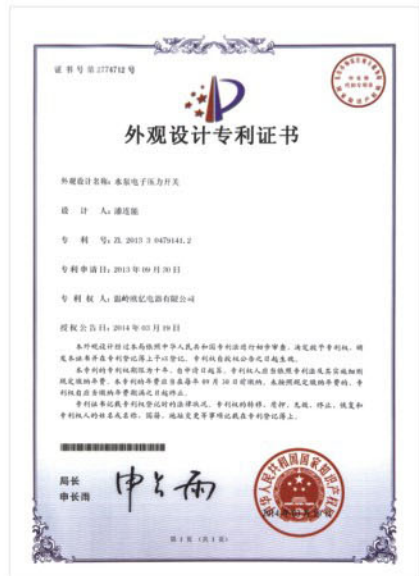
# Make Quality Device Only

Science and technology for development

CE ISO9001:2008



www.llaspa.com



**WATER PUMP INTELLIGENT CONTROLLER**

技术参数/Technical Parameters:

型号 Type	LS-12 THREE PHASE 380V
功率 Power	0.75-15KW
频率 Frequency	50/60Hz
包装尺寸 Packing Size(cm)	49 × 25.5 × 32.2
数量 PCS/CTN	6
净重 N.W.(kgs)	5.82
毛重 G.W.(kgs)	6

**MAIN FEATURES:**

- Built in Function Switch To Apply Different Application
- Applied For Water Supply By Liquid Level Control
- Applied For Water Supply By pressure Control
- Applied For Water Drainage By Liquid Level Control
- Computer Main Board And Module For Industrial & Civil Pump
- Auto /Manual Switch Push Button Calibration
- Pump Stalled Protection Transient Surge Protection
- Over Current Protection Under Voltage Protection
- Open Phase Protection
- Prompt For Uncompleted Parameter Calibrating
- Dry Running Protection Without Installing Float Switch Or Liquid Probe In The Well
- Pump Accumulative Running Time Displaying
- Pump Last Five Fault Record Displaying
- Displays Pump Running Information
- RS485 Communication Interface
- Rapid Cycle Protection
- Pump Shaft Protection



**LS-12**

**MAIN SPECIFICATIONS:**

Rated Input Voltage: AC380V / Three Phase  
 Rated Frequency: 50Hz / 60Hz  
 Rated Output power of pump motor: 0.75-4KW(1hp-5.5hp) / 5.5-11KW(7.5hp-15hp) / 15KW(20hp)

**WATER PUMP INTELLIGENT CONTROLLER**

技术参数/Technical Parameters:

额定电压 Voltage	220V-240V
功率 Power	0.75-2.2kW
频率 Frequency	50/60Hz
包装尺寸 Packing Size(cm)	51.5 × 38.5 × 58
数量 PCS/CTN	12
净重 N.W.(kgs)	15.1
毛重 G.W.(kgs)	16.1

**Lower Voltage Protection**

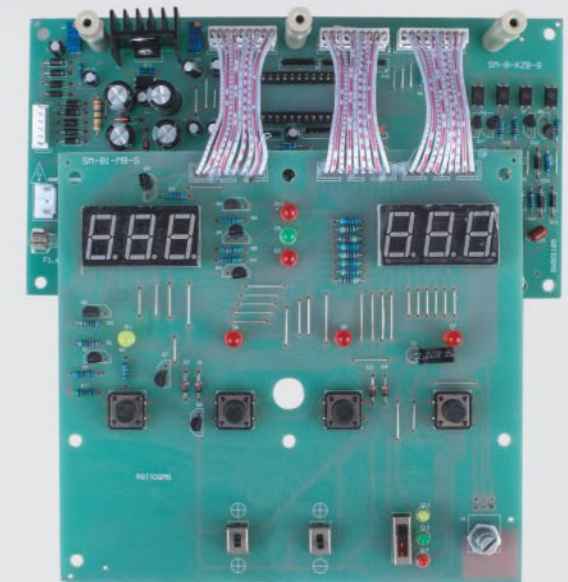
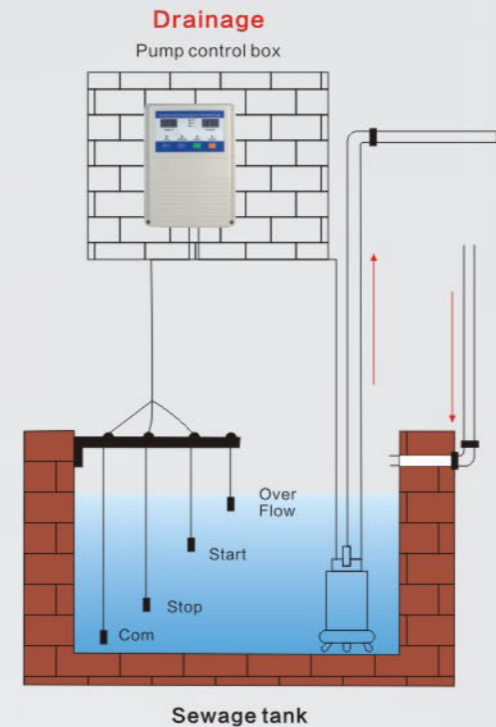
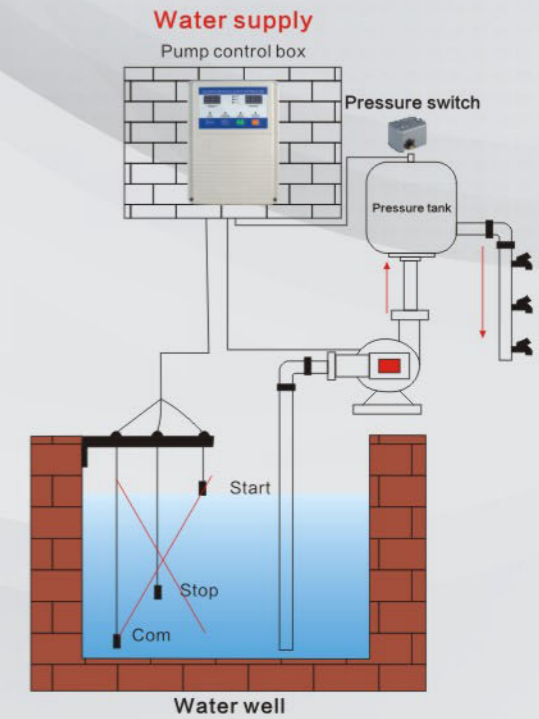
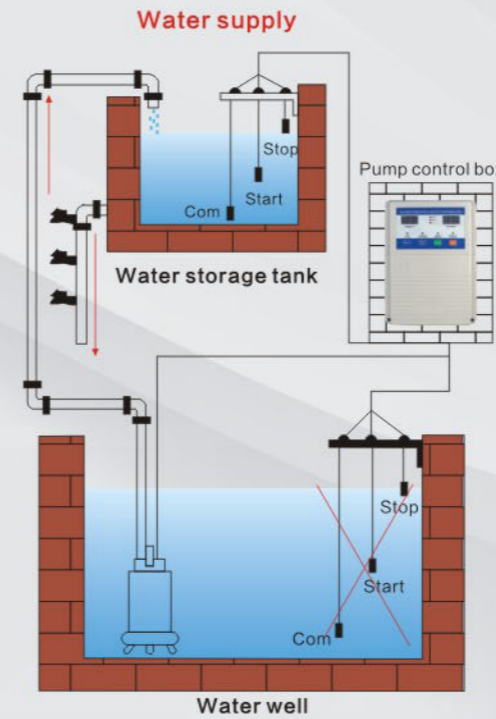
The inside have the function for auto start in pre-set water level  
 And can be stop in pre-set water level  
 And also it can be auto restart after the pipe no water



**LS-12**



**SINGLE PUMP CONTROL PANEL, APPLIED FOR:**



KW	0.37	0.55	0.75	1.1	1.5	2.2	3	4	5.5	7.5	11	15	18.5	22	30	37	45	55
HP	0.5	0.75	1	1.5	2	3	4	5	7	10	15	20	25	30	40	50	60	70

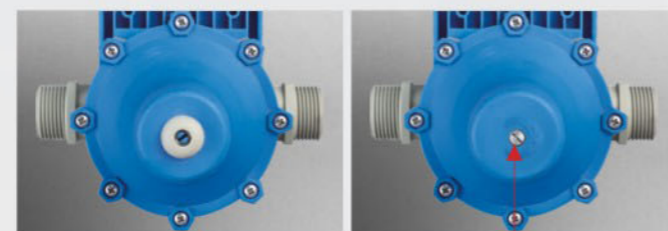


## LS-1

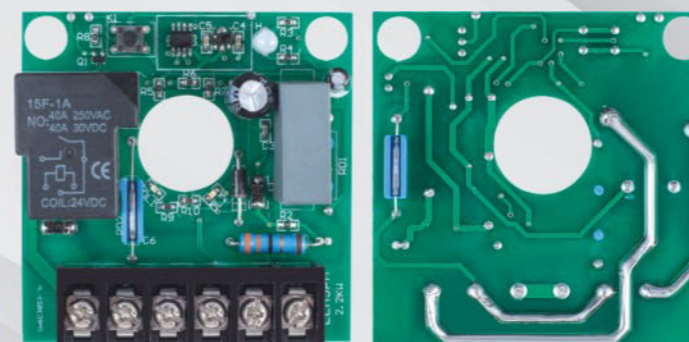
技术参数/Technical Parameters:

电压 Voltage	AC 220V/110V DC 12V 24V 36V 48V
频率 Frequency	50/60Hz
最大电流 Max Current	10A 16A 25A
最大功率 Max Power	1.1 kW 2.2 kW
启动压力 Start Pressure	0.8bar、1.2bar、1.5bar、2.2bar
最大工作压力 Max Working/Pressure	10bar
接口 Joointscrew	G1
保护等级 Protection/Grade	IP65
温度 Temperature	90℃
包装尺寸 Packing Size(cm)	52 × 47 × 38
数量 PCS/CTN	12
净重 N.W.(kgs)	14.64
毛重 G.W.(kgs)	18.84

Optional color



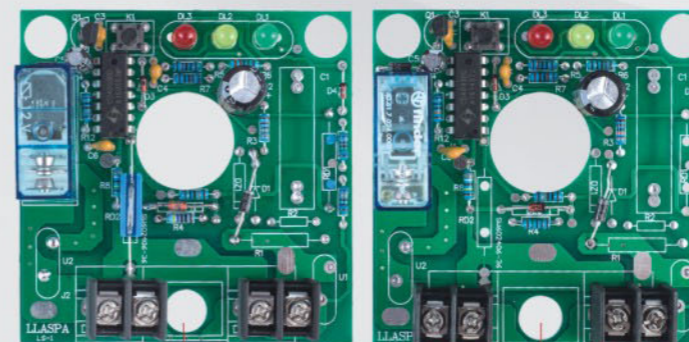
Adjustment



LS-1 2.2KW Auto Restart

## LS-1 2.2KW 3HP 40(25)A PRESSURE CONTROL

- 1:Connector 25A
- 2:Max Rate Current:40(25A)
- 3:Max Pressure:10bar
- 4:Rate Voltage:220-240v
- 5:Max Power:3hp 2.2kw
- 6:Auto Restart Function After No Water



DC12V

DC36V

DC24V

DC48V

## ONLY FOR DC PUMP PRESSURE CONTROL

- 1:Connector 20A
- 2:Max Rate Current:16A
- 3:Max Pressure:10bar
- 4:Rate Voltage:dc 12v 24v 36v 48v
- 5:Pump Head Require: ≥25meter

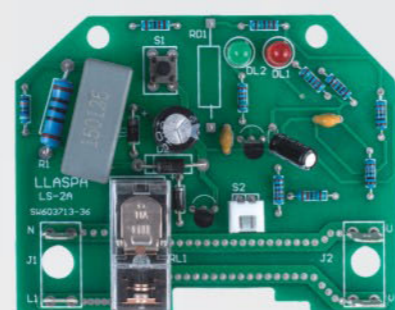




## LS-2

技术参数/Technical Parameters:

电压 Voltage	220V/110V
频率 Frequency	50/60Hz
最大电流 Max Current	10A
最大功率 Max Power	1.1kW
启动压力 Start Pressure	1.0~3.5bar
最大工作压力 Max Working/Pressure	10bar
接口 Joinscrew	G1
保护等级 Protection/Grade	IP65
温度 Temperature	90℃
包装尺寸 Packing Size(cm)	42 × 32.5 × 21.5
数量 PCS/CTN	12
净重 N.W.(kgs)	6.12
毛重 G.W.(kgs)	8.62



LS-3(RE D)ADJUSTMENT  
LS-3(红色)可调

## LS-3

技术参数/Technical Parameters:

电压 Voltage	220V/110V
频率 Frequency	50/60Hz
最大电流 Max Current	10A
最大功率 Max Power	1.1kW
启动压力 Start Pressure	1.0~3.5bar
最大工作压力 Max Working/Pressure	10bar
接口 Joinscrew	G1
保护等级 Protection/Grade	IP65
温度 Temperature	90℃
包装尺寸 Packing Size(cm)	46.5 × 42.7 × 25
数量 PCS/CTN	12
净重 N.W.(kgs)	13.56
毛重 G.W.(kgs)	16.42



LS-3(BLUE)ADJUSTMENT  
LS-3(蓝色)可调



## LS-3B





**LS-4**

## LS-4/5

技术参数/Technical Parameters:

电压 Voltage	220V/110V	
频率 Frequency	50-60Hz	
最大电流 Max Current	10A	
最大功率 Max Power	1.1kW	
启动压力 Start Pressure	1.0-3.5bar	
最大工作压力 Max Working/Pressure	10bar	
接口 Jointscrew	G1	
保护等级 Protection/Grade	IP65	
温度 Temperature	90℃	

	LS-4	LS-5
包装尺寸 Packing Size(cm)	57.5 × 54 × 25	46.5 × 42.7 × 25
数量 PCS/CTN	12	12
净重 N.W.(kgs)	16.5	13.56
毛重 G.W.(kgs)	(19.18)	(16.42)



**LS-5**



Adjustment



**LS-6A**

## LS-6/6A

技术参数/Technical Parameters:

电压 Voltage	220V/110V	
频率 Frequency	50/60Hz	
最大电流 Max Current	10A	
最大功率 Max Power	1.1kW	
启动压力 Start Pressure	0.8 1.5 2.2 bar	
最大工作压力 Max Working/Pressure	10bar	
接口 Jointscrew	G1	
保护等级 Protection/Grade	IP65	
温度 Temperature	90℃	

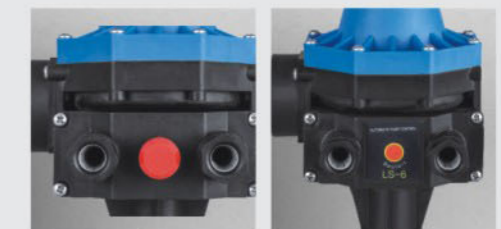
包装尺寸 Packing Size(cm)	53 × 44 × 27	
数量 PCS/CTN	12	
净重 N.W.(kgs)	10.68	
毛重 G.W.(kgs)	13.36	



**LS-6A**



**LS-6**



LS-6A Plastic Button

LS-6 PVC button



**LS-6B**



**LS-6B**

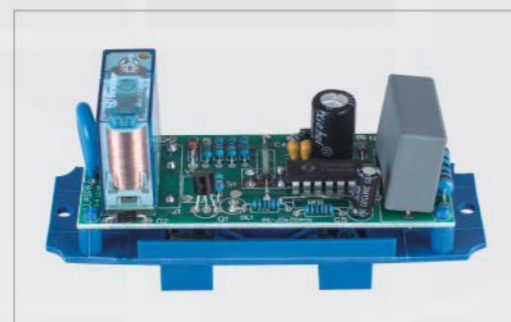


**LS-6B PLUS**

## LS-6B

技术参数/Technical Parameters:

电压 Voltage	220V/110V
频率 Frequency	50/60Hz
最大电流 Max Current	10A
最大功率 Max Power	1.1kW
启动压力 Start Pressure	0.8 1.5 2.2 bar
最大工作压力 Max Working/Pressure	10bar
接口 Joinscrew	G1
保护等级 Protection/Grade	IP65
温度 Temperature	90℃
包装尺寸 Packing Size(cm)	53 × 44 × 27
数量 PCS/CTN	12
净重 N.W.(kgs)	10.68
毛重 G.W.(kgs)	13.36



LS-8(DRAK BLUE)  
LS-8(深蓝)



LS-8(SKY BLUE)  
LS-8(天蓝)

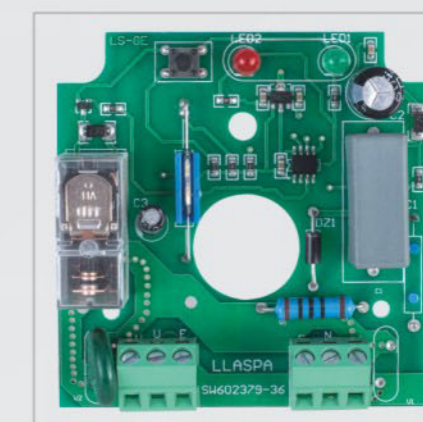


LS-8(BLACK)  
LS-8(黑色)

## LS-8

技术参数/Technical Parameters:

电压 Voltage	220V/110V
频率 Frequency	50/60Hz
最大电流 Max Current	10A
最大功率 Max Power	1.1kW
可调压力 Adjustment Pressure	1.0~3.5bar
不可调压力 Not Adjustment Pressure	0.8 1.2 1.5 2.2bar
最大工作压力 Max Working/Pressure	10bar
接口 Joinscrew	G1
保护等级 Protection/Grade	IP65
温度 Temperature	90℃
包装尺寸 Packing Size(cm)	61 × 47.5 × 25
数量 PCS/CTN	12
净重 N.W.(kgs)	13.03
毛重 G.W.(kgs)	15.58



Auto Start



Adjustment



Not Adjustment





LS-8A(BLACK)ADJUSTMENT  
LS-8A(黑色)可调

## LS-8A

技术参数/Technical Parameters:

电压 Voltage	220V/110V
频率 Frequency	50/60Hz
最大电流 Max Current	10A
最大功率 Max Power	1.1kW
启动压力 Start Pressure	1.0~3.5bar
最大工作压力 Max Working/Pressure	10bar
接口 Joinscrew	G1
保护等级 Protection/Grade	IP65
温度 Temperature	90℃
包装尺寸 Packing Size(cm)	61 × 47.5 × 25
数量 PCS/CTN	12
净重 N.W.(kgs)	13.5
毛重 G.W.(kgs)	16.1



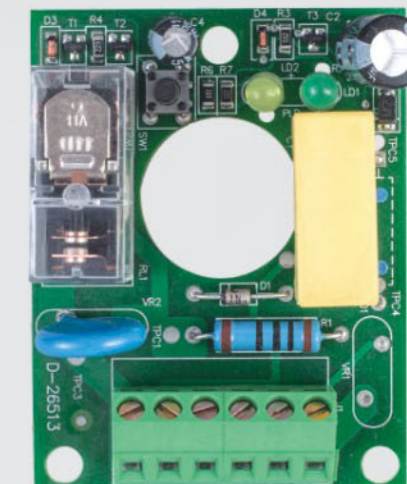
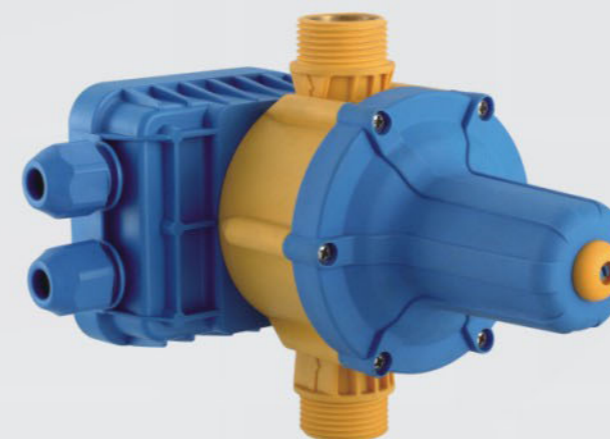
LS-8A(DRAK BLUE)  
LS-8A(深蓝)



## LS-9

技术参数/Technical Parameters:

电压 Voltage	220V/110V
频率 Frequency	50/60Hz
最大电流 Max Current	10A
最大功率 Max Power	1.1kW
启动压力 Start Pressure	1.5bar/2.2bar
接口 Joinscrew	G1
保护等级 Protection/Grade	IP65
温度 Temperature	90℃
包装尺寸 Packing Size(cm)	47.5 × 41 × 34
数量 PCS/CTN	12
净重 N.W.(kgs)	9.9
毛重 G.W.(kgs)	12.6



Adjustment

Not Adjustment



**LS-30  
MAX**

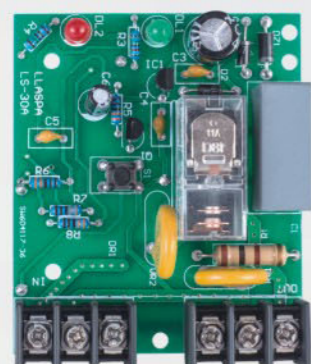


**LS-30**

## LS-30

技术参数/Technical Parameters:

电压 Voltage	220V/110V
频率 Frequency	50/60Hz
最大电流 Max Current	10A
最大功率 Max Power	1.1kW
启动压力 Start Pressure	1.0~3.5bar
最大工作压力 Max Working/Pressure	10bar
接口 Joointscrew	G1
保护等级 Protection/Grade	IP65
温度 Temperature	90℃
包装尺寸 Packing Size(cm)	44 × 39 × 31.5
数量 PCS/CTN	12
净重 N.W.(kgs)	9.75
毛重 G.W.(kgs)	14.2



**ADJUSTMENT  
可调**



## MC-1

技术参数/Technical Parameters:

电压 Voltage	115V AC	230V AC	230V AC
额定电流 Rated Current	1.5HP/20A	2.0HP/12A	3.0HP/17A
频率 Frequency	50/60Hz		
最低压力 Lowest Pressure	20PSI		
最高压力 Highest Pressure	80PSI		
压力设定 Pressure Setting	20-40PSI/30-50PSI/40-60PSI		
包装尺寸 Packing Size(cm)	51 × 37 × 21		
数量 PCS/CTN	50		
净重 N.W.(kgs)	16.7		
毛重 G.W.(kgs)	17.6		

1BAR=0.1MPA=14.5PSI

PSI 单位lb/in2 磅/升

公斤BAR	1.4-2.8	2.1-3.5	2.8-4.2	4.8-7
PSI	20-40	30-50	40-60	70-100





## MC-2

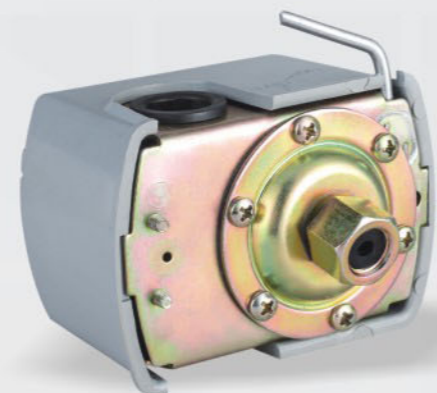
Lower Water Level Protect Function

技术参数/Technical Parameters:

电压 Voltage	115V AC 230V AC 230V AC
额定电流 Rated Current	1.5HP/20A 2.0HP/12A 3.0HP/17A
频率 Frequency	50/60Hz
最低压力 Lowest Pressure	20PSI
最高压力 Highest Pressure	80PSI
压力设定 Pressure Setting	20-40PSI/30-50PSI/40-60PSI
包装尺寸 Packing Size(cm)	46 × 42 × 21
数量 PCS/CTN	50
净重 N.W.(kgs)	16.7
毛重 G.W.(kgs)	17.6

PSI 单位lb/in<sup>2</sup> 磅/升

PSI	20-40PSI
-----	----------



## MC-3 MALE



## MC-3 FEMALE



## MC-3A

## MC-3/3A

技术参数/Technical Parameters:

电压 Voltage	110V/220V
最大电流 Max Current	1.5HP/20A 2.0HP/12A 3.0HP/17A
频率 Frequency	50/60Hz
最高压力 Highest Pressure	3bar
启动压力 Pressure Setting	1.0-1.7bar /1.1-1.8bar 1.4-2.2bar/ 2.2-3.0bar
包装尺寸 Packing Size(cm)	53 × 27 × 17.5
数量 PCS/CTN	100
净重 N.W.(kgs)	19.5
毛重 G.W.(kgs)	21

1BAR=0.1MPA=14.5PSI

PSI 单位lb/in<sup>2</sup> 磅/升

## MC-3

公斤BAR	1.0-1.8	1.5-2.2	1.8-2.6	2.2-3.0
PSI	14.5-26	20-30	26-38	32-44

1BAR=0.1MPA=14.5PSI

PSI 单位lb/in<sup>2</sup> 磅/升

## MC-3A

公斤BAR	1.0-1.8	1.5-2.2	1.8-2.6	2.2-3.0
PSI	14.5-26	20-30	26-38	32-44



## MC-5

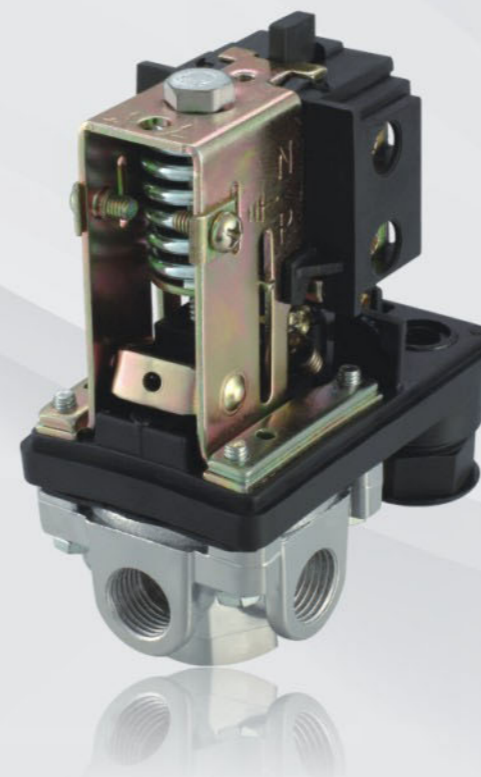
技术参数/Technical Parameters:

电压 Voltage	115V AC 230V AC 230V AC
额定电流 Rated Current	1.5HP/20A 2.0HP/12A 3.0HP/17A
频率 Frequency	50/60Hz
最低压力 Lowest Pressure	20PSI
最高压力 Highest Pressure	80PSI
压力设定 Pressure Setting	20-40PSI/30-50PSI/40-60PSI
包装尺寸 Packing Size(cm)	45 × 33 × 22
数量 PCS/CTN	50
净重 N.W.(kgs)	16.7
毛重 G.W.(kgs)	18.3

1BAR=0.1MPa=14.5PSI  
PSI 单位lb/in<sup>2</sup> 磅/升

**For Water Pump**

公斤BAR	1.4-2.8	2.1-3.5	2.8-4.2	4.8-7
PSI	20-40	30-50	40-60	70-100



## MC-7

技术参数/Technical Parameters:

最低压力 Lowest Pressure	20PSI
最高压力 Highest Pressure	80PSI
压力设定 Pressure Setting	20-40PSI 30-50PSI 40-60PSI
包装尺寸 Packing Size(cm)	57 × 44 × 15
数量 PCS/CTN	50
净重 N.W.(kgs)	16
毛重 G.W.(kgs)	18

1BAR=0.1MPa=14.5PSI  
PSI 单位lb/in<sup>2</sup> 磅/升

**For Air compressor**

公斤BAR	5-8
PSI	70-116



1BAR=0.1MPa=14.5PSI  
PSI 单位lb/in<sup>2</sup> 磅/升

**For Air compressor**

公斤BAR	5-8
PSI	70-116



## MC-9



技术参数/Technical Parameters:

额定电压 Voltage	250V, 380V
额定电流 Rated Current	16A(10A) 20A
压力设定 Pressure Setting	15-80PSI
压力范围 Pressure Range	15-35PSI, 20-40PSI, 30-50PSI, 40-60PSI, 50-80PSI, 95-125PSI, 120-150PSI, 135-175PSI
螺纹接口 Joint Screw	1/4"
包装尺寸 Packing Size(cm)	54 × 35 × 23
数量 PCS/CTN	50
净重 N.W.(kgs)	18.7
毛重 G.W.(kgs)	21.1

注: single phase or three phase for choose 单相或三相可选择

1BAR=0.1MPA=14.5PSI  
PSI 单位lb/in2 磅/升

公斤BAR	1.4-2.8	2.1-3.5	2.8-4.2	4.8-7
PSI	20-40	30-50	40-60	70-100

外螺纹长度 26 36 43毫米  
Male Screw Size:26mm 36mm 43mm



## MC-9A



技术参数/Technical Parameters:

额定电压 Voltage	250V
额定电流 Rated Current	16A(10A) 20A
压力设定 Pressure Setting	15-80PSI
压力范围 Pressure Range	15-35PSI, 20-40PSI, 30-50PSI, 40-60PSI, 50-80PSI, 95-125PSI, 120-150PSI, 135-175PSI
螺纹接口 Joint Screw	1/4"
包装尺寸 Packing Size(cm)	54 × 35 × 23
数量 PCS/CTN	50
净重 N.W.(kgs)	18.7
毛重 G.W.(kgs)	21.1

1BAR=0.1MPA=14.5PSI

公斤BAR	0.5-1.5
-------	---------





## KP35

技术参数/Technical Parameters:  
 The adjusting range is: -0.2-7.5(bar)  
 Mechanical back to the poor: 0.7-4(bar)  
 Maximum working pressure: 17(bar)  
 The maximum test pressure: 22(bar)  
 Pressure connection: G1/4A  
 Contact material: Ag

For Air compressor



## FLO-1

技术参数/Technical Parameters:

额定电压 Voltage	AC 125V/250V
额定电流 Rated Current	AC 16(4A)
频率 Frequency	50/60Hz
温度 Temperature	90℃
保护等级 Protection/Grade	IP68



## FLO-2

技术参数/Technical Parameters:

额定电压 Voltage	AC 125V/250V
额定电流 Rated Current	AC 16(4A)
频率 Frequency	50/60Hz
温度 Temperature	90℃
保护等级 Protection/Grade	IP65



## BALANCE WEIGHT



## FLO-3

技术参数/Technical Parameters:

额定电压 Voltage	AC 125V/250V
额定电流 Rated Current	AC 16(4A)
频率 Frequency	50/60Hz
温度 Temperature	90℃
保护等级 Protection/Grade	IP68



## FLO-4

技术参数/Technical Parameters:

额定电压 Voltage	AC 125V/250V
额定电流 Rated Current	AC 16(4A)
频率 Frequency	50/60Hz
温度 Temperature	90℃
保护等级 Protection/Grade	IP65

**CIRCUIT BOARD**



**LS-1**



**LS-6**



**LS-2**



**LS-3**



**LS-8**



**LS-9**



**LS-30**



**LS-12**

**PUMP ACCESSORIES**



Metal tube



P1

P2

**PUMP ACCESSORIES**



V-1L

V-2L/A

V-2L/B

V-8L

V-12L

Model	Max.pressure (bar)	Precharge Pressure(bar)	Diameter(mm)	Hength(mm)	Connector	Packing CBM
V-1L	4	1.3	106	100	G1/2"	0.018/20PCS
V-2L/A	4	1.5	112	215	G1/2"	0.062/20PCS
V-2L/B	4	1.5	105	187	G1/2"	0.052/20PCS
V-5L	8	1.5	170	281	G3/4"	0.0108
V-8L	8	1.5	200	333	G3/4"	0.0157
V-12L	8	1.5	208	320	G3/4",1"	0.0266
V-19L	8	1.5	268	410	G3/4",1"	0.0329
V-24L	8	1.5	268	430	G3/4",1"	0.035
V-36L	8	1.5	350	520	G3/4",1"	0.077

■Specification

- For water system
- Changable rubber membrane and flange
- Carbon steel body
- Natruel rubber membrane/EPDM membrane
- Working twmperature:

Natruel rubber:0℃-77℃

EPDM:-10℃-99℃

**PUMP ACCESSORIES**



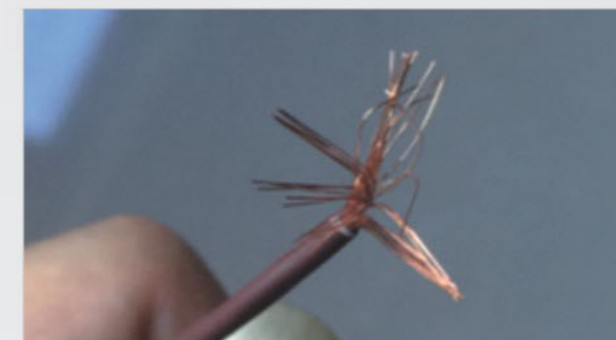
Model	Max.pressure (bar)	Precharge Pressure(bar)	Diameter(mm)	Length(mm)	Connector	Packing CBM
V-50L	8	1.5	350	650	G3/4",1"	0.08
V-60L	8	1.5	350	670	G3/4",1"	0.082
V-80L	8	1.5	400	765	G3/4",1"	0.1224
V-100L	8	1.5	450	810	G3/4",1"	0.16
F-24L	8	1.5	330	345	G3/4",1"	0.041
R-24L	8	1.5	350	390	G3/4",1"	0.0445

■ Specification

- For water system
- Changable rubber membrane and flange
- Carbon steel body
- Natrual rubber membrane/EPDM membrane
- Working twmperature:

Natruel rubber:0°C-77°C

EPDM:-10°C-99°C



Diameter Copper wire pcs

3X1	20UM	0.2MM	32PCS
3X0.75	20UM	0.2MM	24PCS
3X0.5	20UM	0.2MM	16PCS
3X1	15UM	1.5MM	56PC
3X0.75	15UM	1.5MM	42PCS
3X0.5	15UM	1.5MM	28PCS

1um=0.01MM