

LONDRES

AT SAATCHI GALLERY

FOCUS ART

4/5/6/7 OCTUBRE 2023



South Trip Gallery is the first Chilean Art Gallery aimed at disseminating, promoting and exporting Chilean and Latin American artists in the international art market, becoming a company associated with the ProChile country brand.

Founded in 2020, its main mission has been to show Chilean art abroad, through the management since its inception of its Director Karin Barrera, Visual Artist, who from that date until now coordinates the output of hundreds of Visual artists in different techniques and trades abroad, undertaking endless international presentations to countries such as France, United Arab Emirates, Argentina, South Korea, England, Italy, USA among others.





ARTISTS

- CAROLINA ANDRE
- CAROLA CONTRERAS
- CLAUDIA MARDONES
- CLAUDIA RETAMAL
- CLAUDIA VERGARA
- FRANCISCA RUIZ HAACK
- FRANCISCA SIRI
- INGRID GORIGOITIA
- KARIN BARRERA
- KOUROSH NAHID
- MARCOS PEREZ
- MILENKA JERETIC
- PATRICIA TORO RIBBECK
- SONIA KOCH

CAROLINE ANDRE

My work consists of the interaction of hard elements and soft or aqueous elements.

The support of the work is the stain, while the geometric shapes appear to be discovered, resulting in a composition with disparate elements.

I start from the simplest to create the most complex, without any planning.

I play with chance looking for the synthesis of all my interests.

Something very minimal: the cloudy as opposed to the compact.

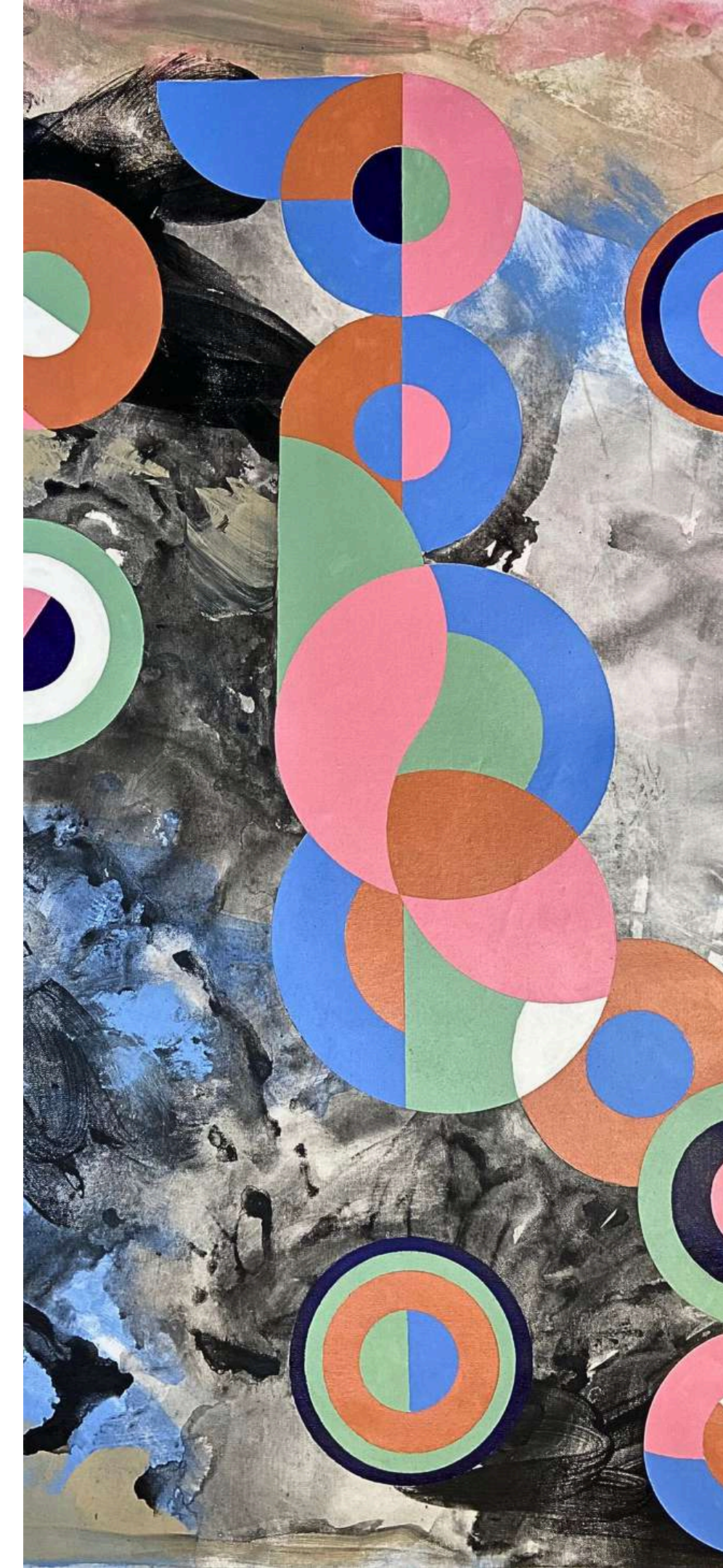
However, there are no obvious things, everything is a secret. With few elements I seek to create the greatest number of variations and in the shortest possible way.

I say the things I think and what I feel, in my own language.

I am interested in bringing together two forms or elements that otherwise could not be found.

I don't have a pre-established program; I take steps between the formless and the fully formed thing.

My exercise is intuitive, rather than knowing or thinking about it, I must do it.



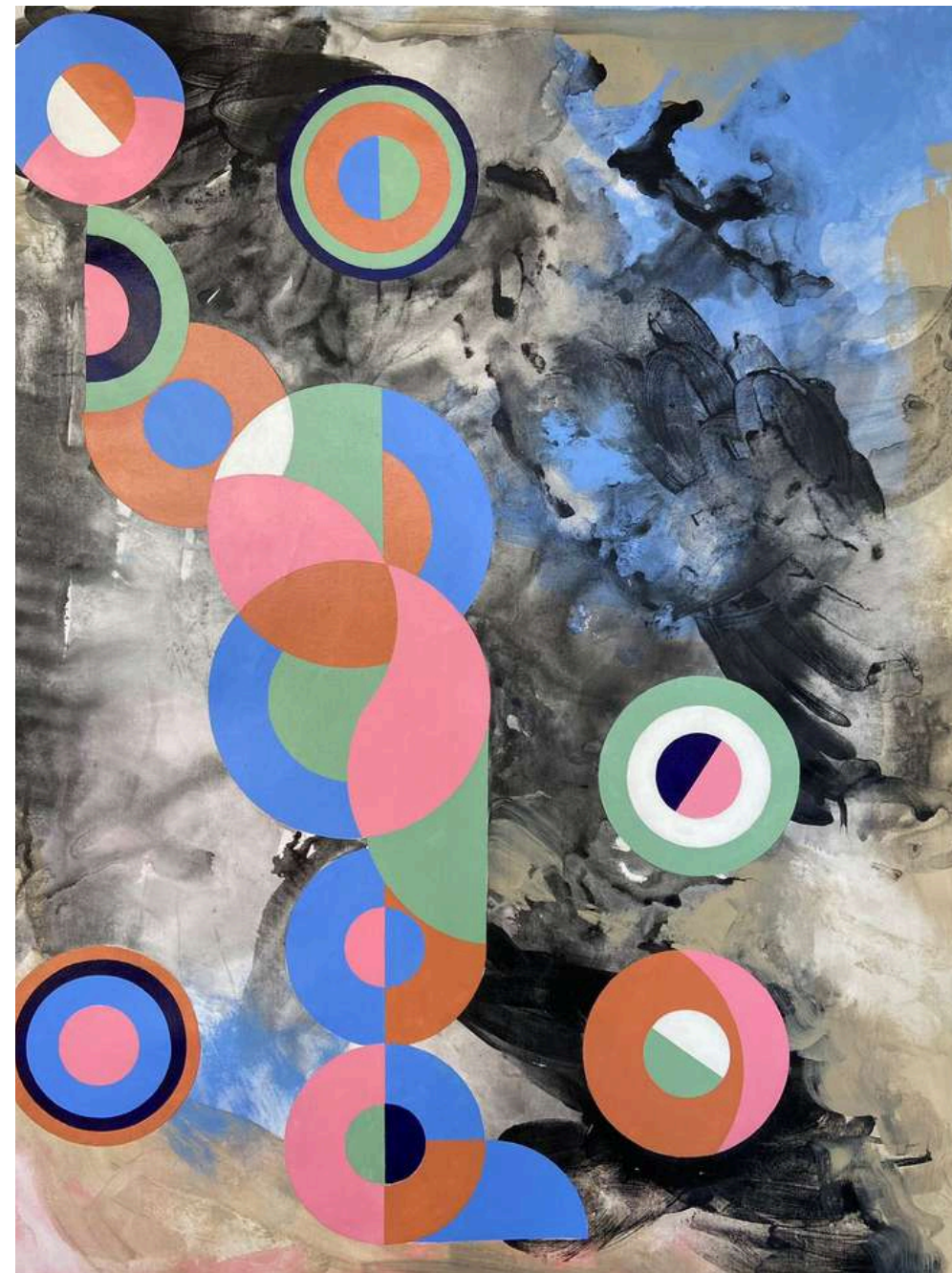


SACRED GEOMETRY SERIES

SIZE PANNEAU

78.74" X 39.37

YEAR 2023



CAROLINA CONTRERAS

Chilean textile designer and visual artist, creator of carolacont art. From an early age, she has felt a special attraction for textures, shapes and colors. This passion has manifested itself through abstract drawing and, subsequently, through the use of acrylic as a means to express feelings and emotions. The artist finds inspiration in nature, considering it a gift for the senses. The wide range of colors, unexpected combinations and wonderful textures present in nature are main sources of inspiration for her. However, over time, she discovered that what moved her most about nature was its diversity and uniqueness, since everything that inhabits it is unique and imperfect, honest and genuine, becoming her personal concept of beauty. Another source of inspiration for the artist is undoubtedly her wide and eclectic spiritual world. Churches, vitreaux, religious figures, flowers, meditation, yoga, masonic temples, and abundance of color has promoted in it a maximalist current. This current is reflected in his intervened analog collage and in compositions in mixed media, where she incorporates figures of saints, buddhas and virgins. In her work, the artist behind Carolacont art builds works that represent a story or a concept that she would like to preserve. Each work is a living story that captures a unique moment, in which she composes intuitively from her own spirituality. Through her art, Carola seeks to expand universal love, gratitude, and compassion, building unique works that capture that moment of creation.





**EXPRESSIONISM OF
THE SOUL SERIES
SIZE PANNEAU
78.74" X 39.37
YEAR 2023**

CLAUDIA MARDONES

Through "The Secret Life of Trees", Claudia invites us to observe the beauty that these species bring to any place or landscape, rural or urban, through their foliage, branches, flowers and/or fruits.

The artist incorporates in her work other everyday elements that relate her to her childhood, as well as lines and forms, with the intention of uniting nature with her own experience, wanting to transmit a casual and simple story.

Mardones also proposes a journey into the most intimate and secret world of the tree.

The images are photographs taken by herself on trips around the country and abroad, which are turned into metal matrices with different engraving techniques.





THE SECRET LIFE OF TREES SERIES

SIZE PANNEAU

21.65" X 21.65"

YEAR 2023

CLAUDIA RETAMAL

To define what I do, I would have to say that everything is valid in the exploration of materials. Ideas come randomly, while others I consciously explore.

They arise without preconceived notions, in moments of possibility or uncertainty.

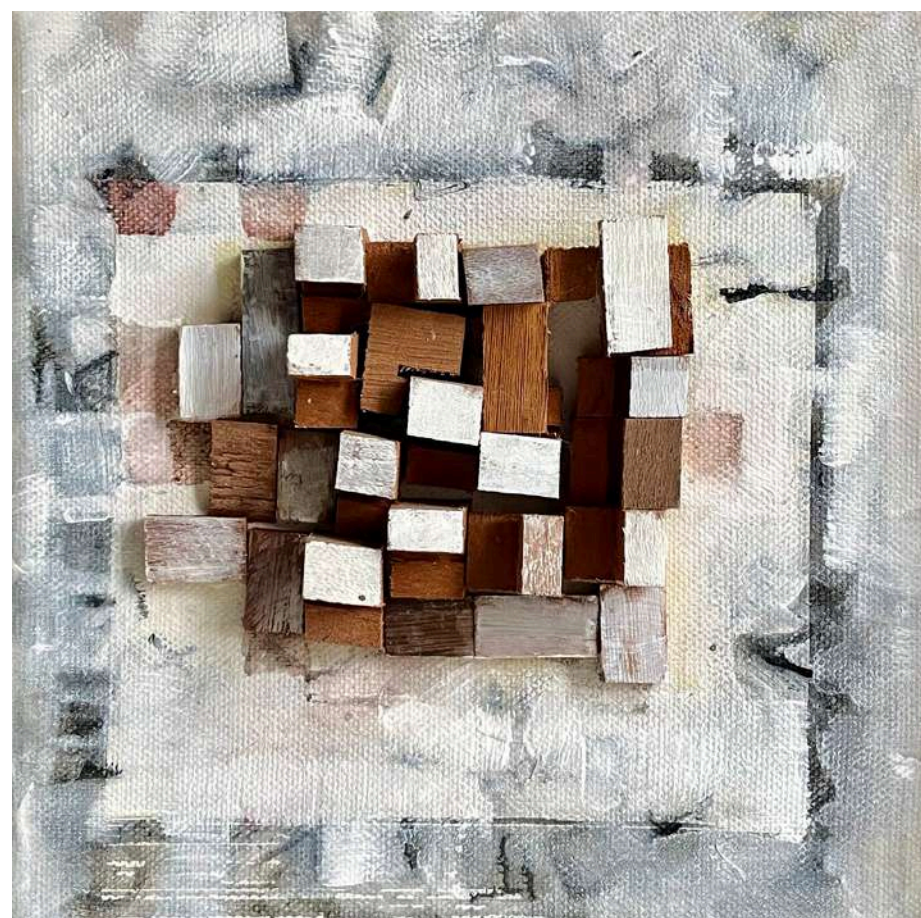
The lines of my works are sometimes intentional. They intertwine with the movements that I draw with long and thin brushes. Upon contact with these forms, a mysterious musical rhythm frees me. The lines emerge, sometimes continuous and other times undulating, open and rhythmic. Adopting suggestions from spontaneity, although it is my unconscious that is truly unleashes and proposes.

My compositions transmit atmospheres that reflect the "here and now", where I get rid of the mind and memories. I materialize in the present moment. I rescue semi-figurative details and reinstate them abstractly in the composition based on what the spots suggest me.

This process is also unconsciously associated with my immediate reality, incorporating objects and materials that are anchored and shaped as memories of my subjective experiences, whether precarious or prosperous.

The small format of my works allows me to materialize my ideas, like photographs that come together to form a complete piece. I can play with colors and sequences, going back to the composition even more spontaneously.





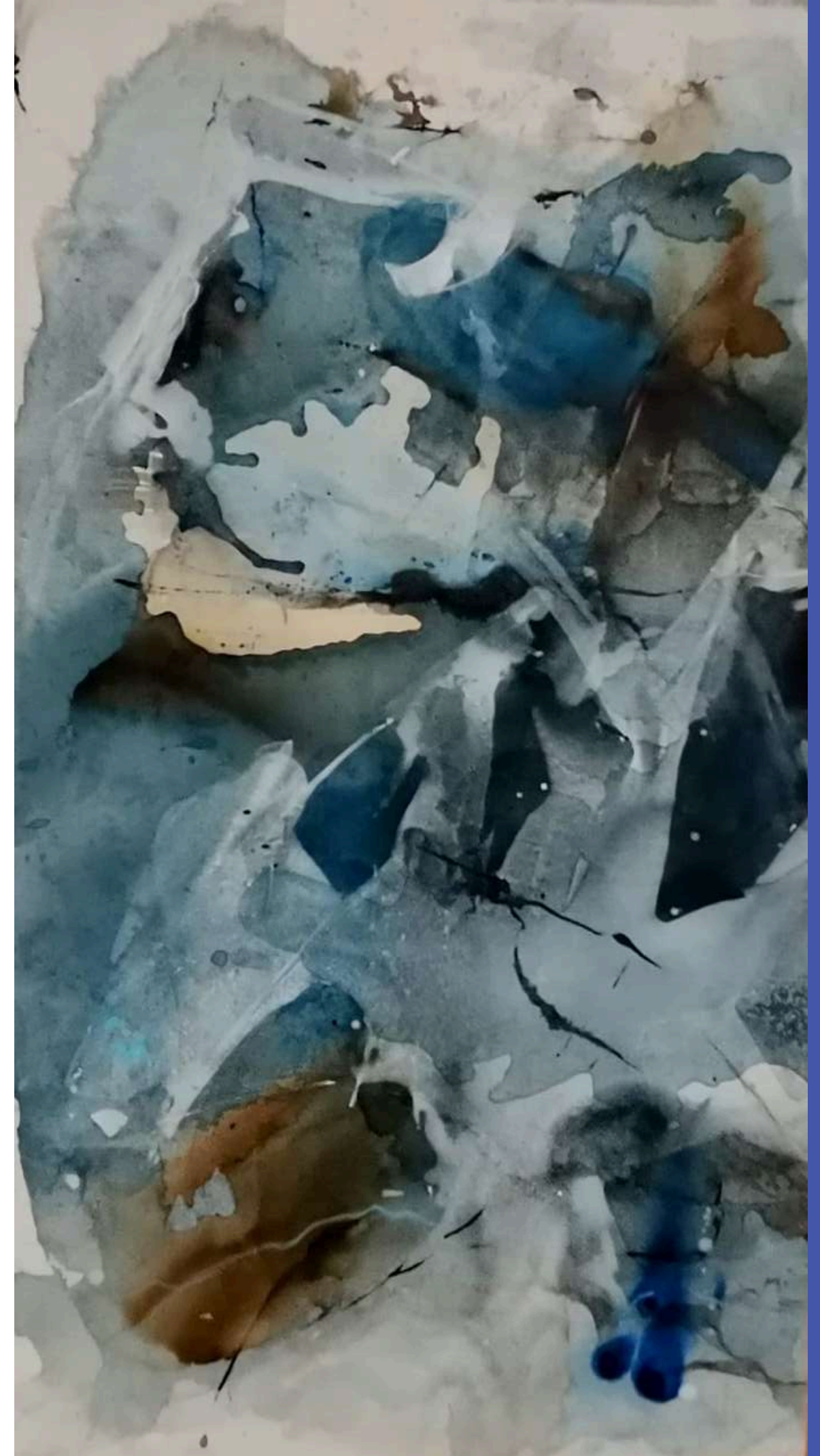
CITY OF FURY SERIES
SIZE PANNEAU
78.74" X 39.37
YEAR 2023

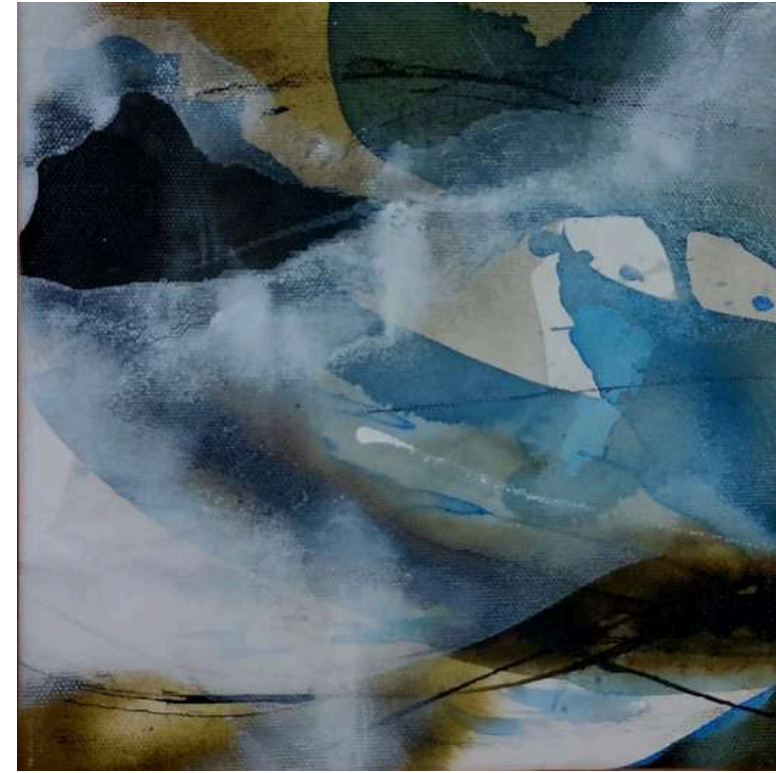
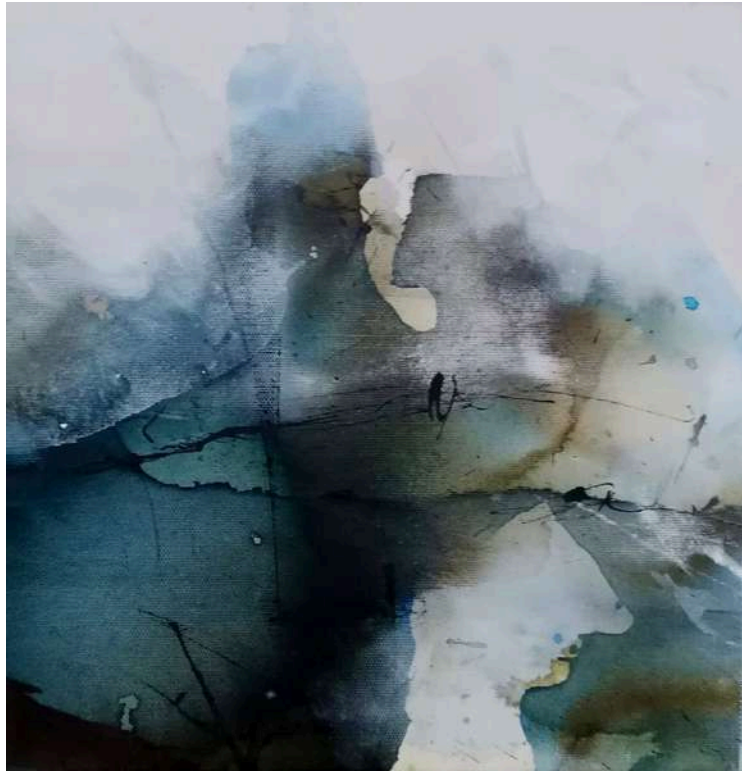
CLAUDIA VERGARA

My work in mixed techniques is characterized by the study of color, stain and shapes, inviting the viewer to discover silhouettes, scenes and/or landscapes that arise from their own imaginary worlds expressed in turn in sensations that under and on transparencies and layers I try to show in abstract scenes.

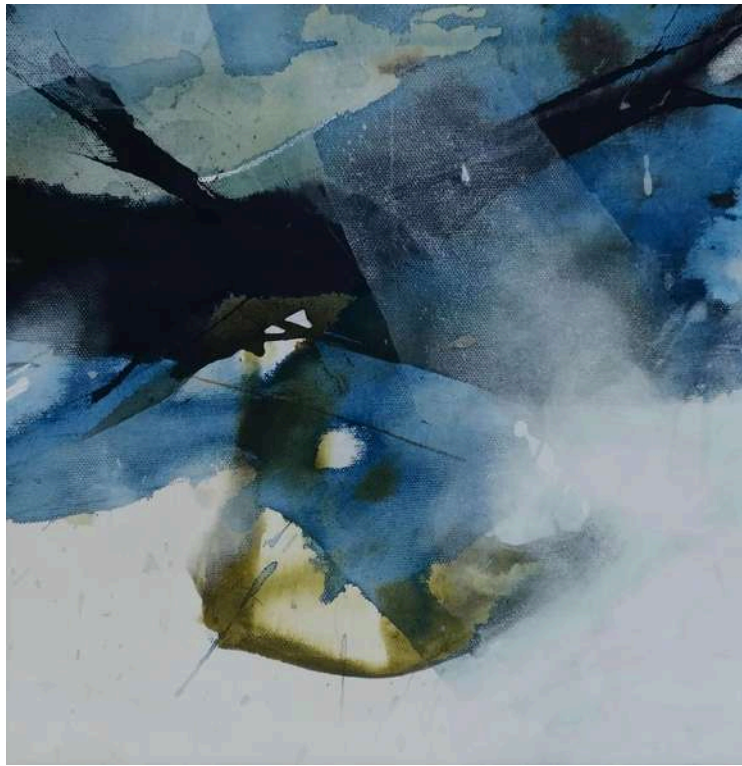
I have a degree in art with a mention in painting from the Diploma of the Catholic University of Chile, where I was awarded for academic excellence. In addition, I have participated in various collective practical workshops and analysis and work criticism courses with prominent national artists and teachers, always in the line of pictorial research but also in photography, such as the Photography Diploma at the School of Foto Arte de Chile and photographic emulsion workshop, among others.

I have exhibited in Chile and abroad in countries like France and the United States.





TRANSPARENCIES
SERIES
SIZE PANNEAU
78.74" X 39.37
YEAR 2023

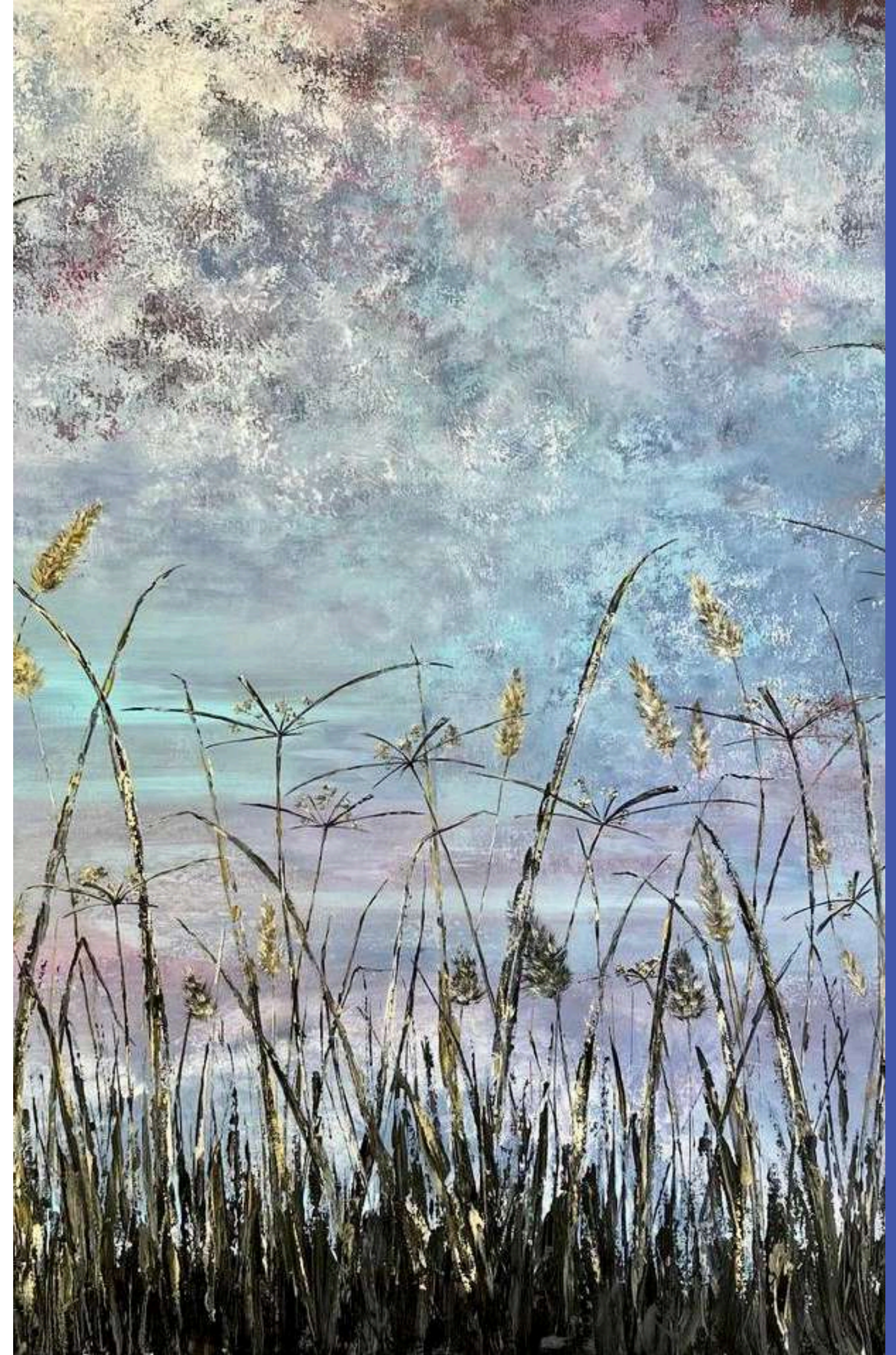


FRANCISCA RUIZ HAACK

"I am a passionate about nature as it allows me to connect with my emotions and gives me serenity. It reminds me that everything has its own timing and we coexist with nature's unalterable cycles making us conscience that everything has its own rhythm and pace".

Over the years, Fran's work has been in permanent evolution, developing different themes, always gravitated towards painting nature. Her work is carefully laid out, as she constructs her art with precision, where light and color are the protagonists that capture the viewers' attention.

She has been part of numerous collective and solo exhibitions, touring Costa Rica as well as abroad, among which the ones held at the 3rd Buenos Aires contemporary art biennial (Argentina), ArtExpo NY, le Carroussel du Louvre (France), Encuentro Latinoamericano y España Ateneo de Madrid (Spain) and World Art Dubai (Arab Emirates).





HORIZONS SERIES
SIZE PANNEAU
78.74" X 39.37
YEAR 2023

FRAN SIRI

I have always been thrilled about how light can transform a small detail of a landscape, human figure or face in to something special and wonderful. Nature and life are my inspiration.

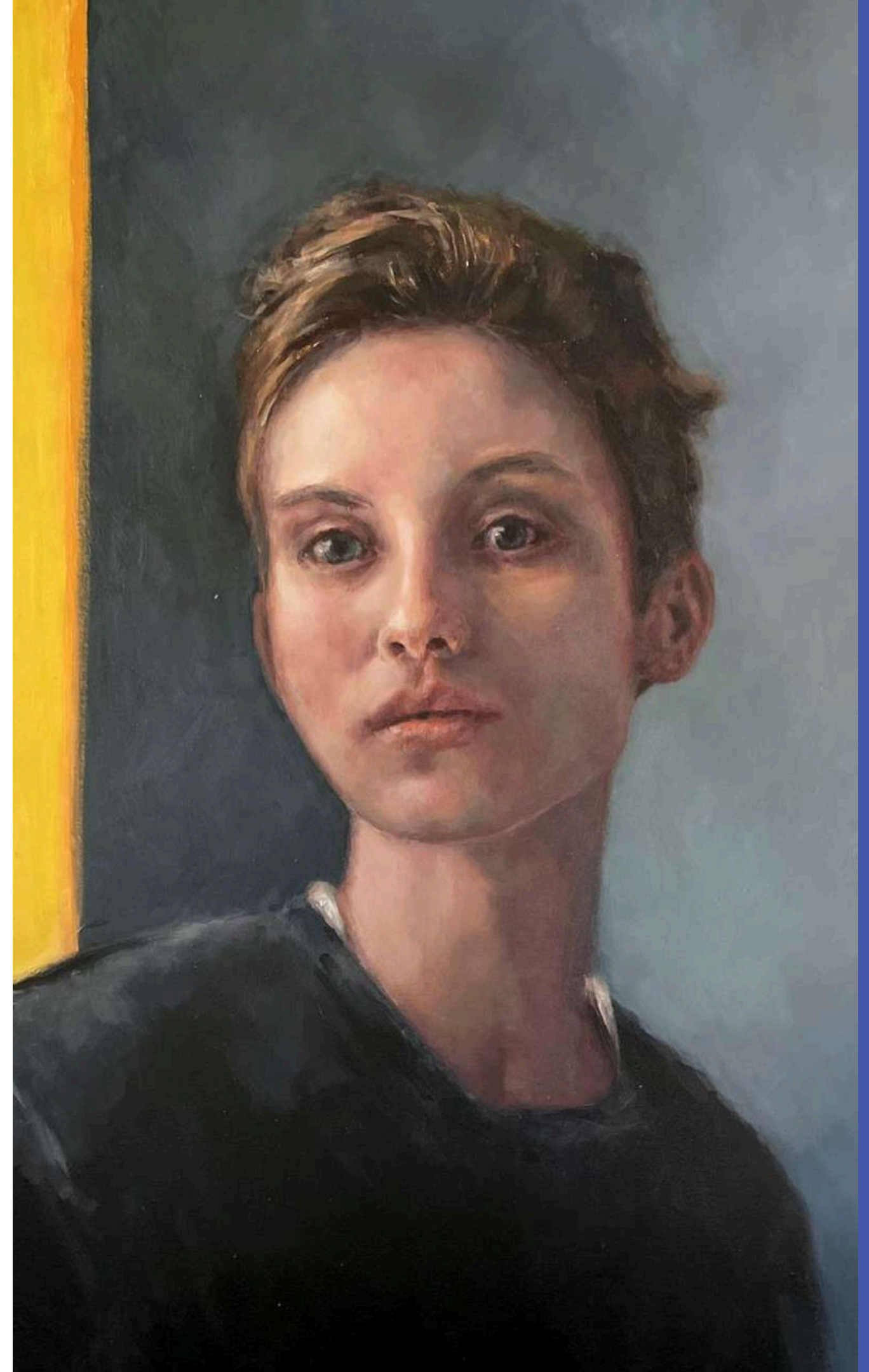
I like a lot of styles but realism is my way to approach to a subject.

Capturing that true and vibrant personality of people is my goal in pursuing this art that I love.

My attention is drawn to the diversity of emotions that a person is able to conjure up with just a look or with their body language.

Discovering these moments keeps me curious and being able to convey those feelings is my commitment

.



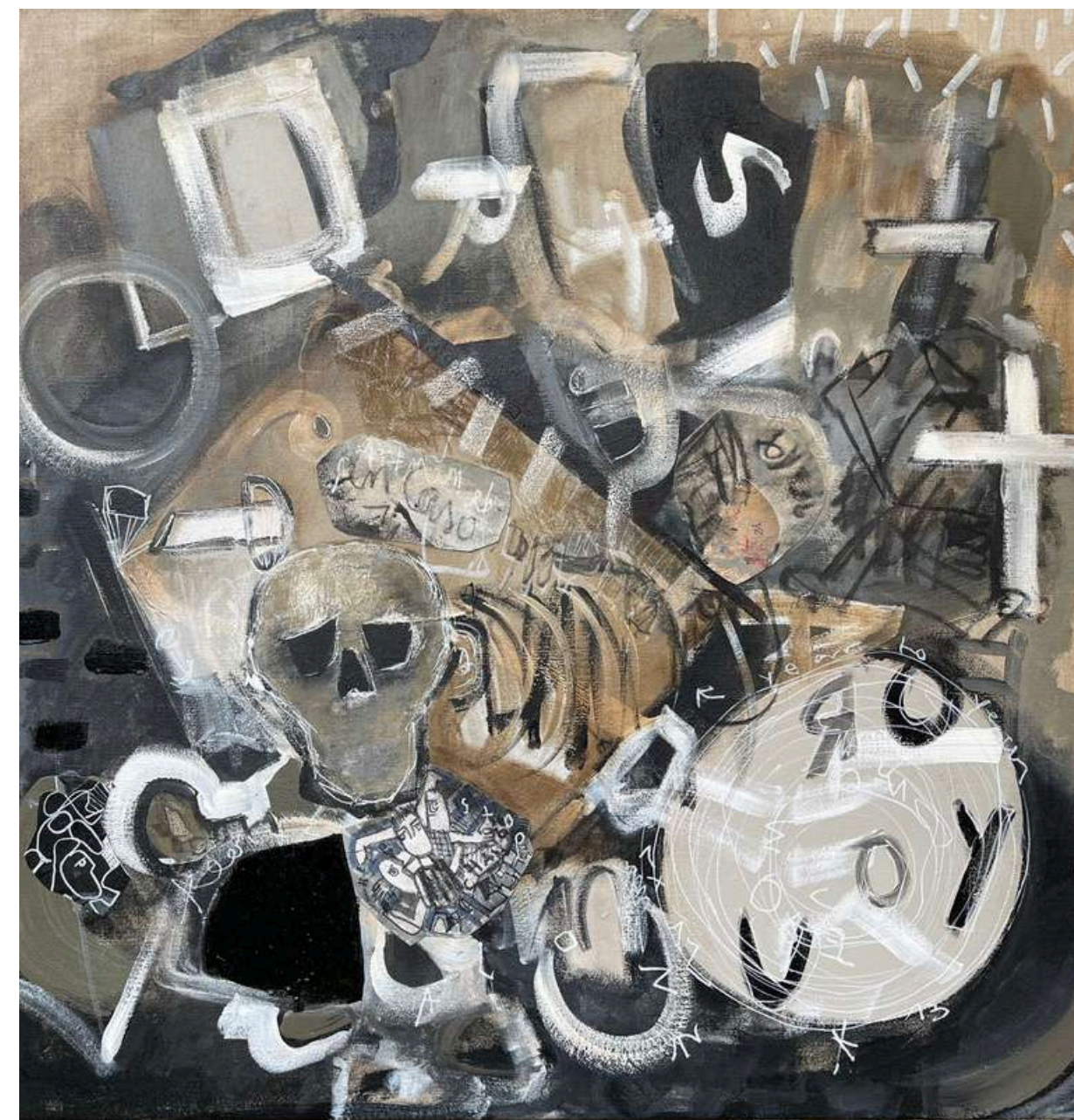


FACES SERIES
SIZE PANNEAU
78.74" X 39.37
YEAR 2023

INGRID GORIGOITIA

My work has an introspective vision; I try to reflect my feelings and emotions through gestures and symbols that I throw on paper almost unconsciously. It's a kind of diary where my life is reflected. For years, I have been building visual graphs for diverse topics of my story, and I have integrated them into my work with different techniques. I've investigated recurring symbols in graffiti and ancient cultures and opened a window with my own symbols; I created them to mirror society, my memories, and myself.

In this selection, I put together these symbols through gestures, movements, rhythms, and silences with a pencil, paint, and collage, which assemble a narrative where I laugh at myself and my extensive imaginary self and ironize situations and characters of my surroundings. My reverse handwriting, a product of my language disorder, gives me the wings and the audacity to tell the untold.





STRANGE WORLDS SERIES

SIZE PANNEAU

78.74" X 39.37

YEAR 2023

KARIN BARRERA

Through my art I am able to express myself in my totality as an artist, being the theme of nature the one that moves my creation today. Botanical illustration, birds, forest, female presence, protection and care of the earth, are found in my creations supported by the brushstroke, by the superposition of colors, light spaces and textures. Likewise, and as a way of tangibly approaching my proposal of environmental care, since 2013, I began to use in my work recycled disused x-rays from clinics and hospitals, painting and intervening them, obtaining supports for my creative worlds.





**THE GARDEN OF
DELIGHTS SERIES
SIZE PANNEAU
15.74" x 15.74"
YEAR 2023**



KOUROSH NAHID

I am a Persian artist, with a main focus on the human figure. I grew up with a passion for Superheroes and classic Mythology, mainly drawn to their portrayal of heroes in an idealized state. My intentions in my paintings include giving the characters a feeling of power, something elemental, larger than life. My entire life, I've drawn mostly in black and white or neutral colors, primarily due to being severely colorblind. Now, it is my favorite style. It helps me add a sense of mystery to my artworks, which compliments the old and historical subjects that I draw. It also adds a touch of horror to the Vikings and their gods, which connects with my original introduction and fascination with Norse Mythology. My drawings show damaged armor, and heavy battle scars to reflect the brutal reality of the characters, and the hardships they had to endure in their lives. My current artworks are drawn on a tablet, using an application called Clip Studio, then printed and framed. The digital format gives me many advanced tools and techniques, such as allowing me to create variations of existing artworks that I had done. But I still try to add a sense of raw craftsmanship to my artworks, similar to textures found in acrylic and oil paintings.

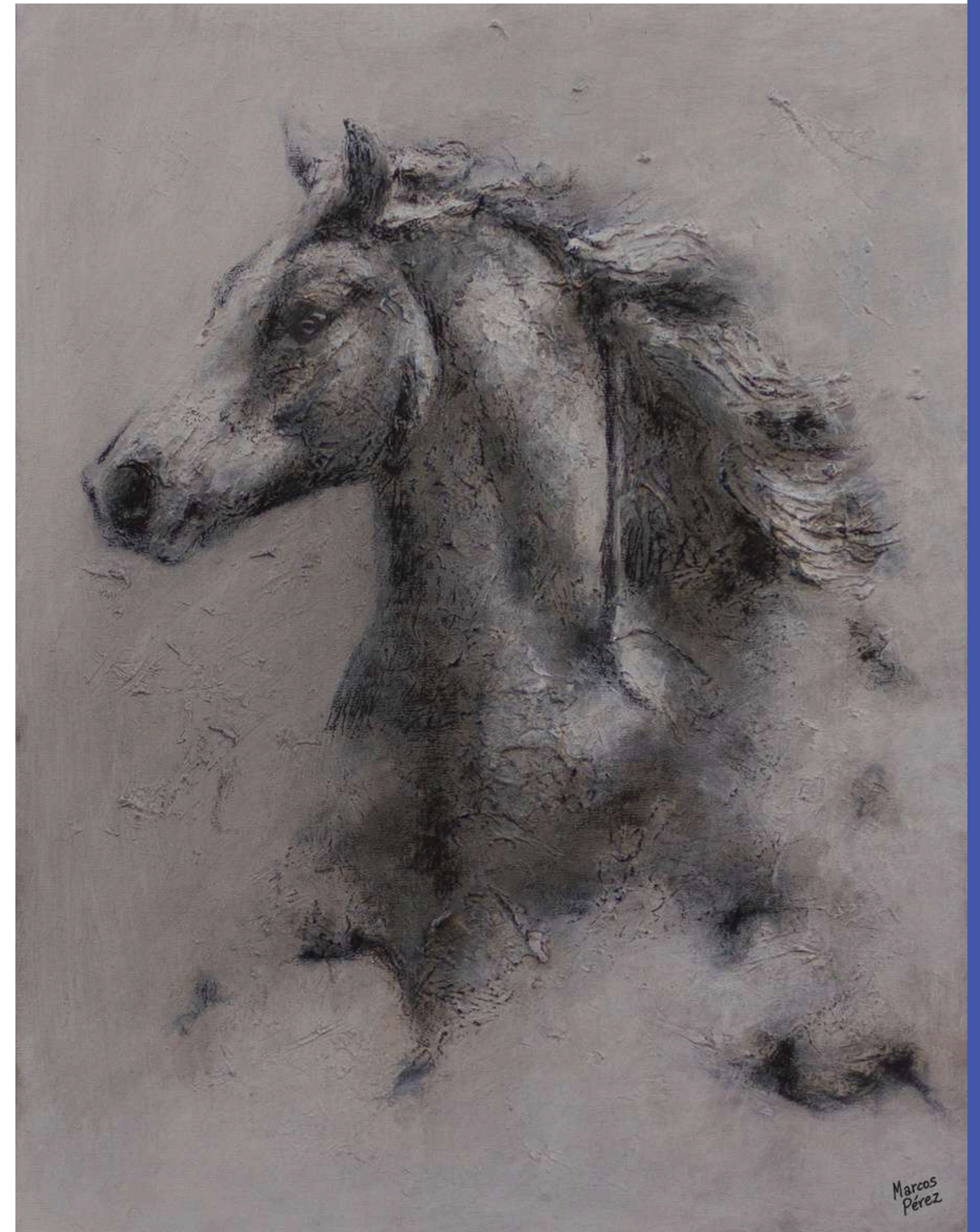




GODS SERIES
SIZE PANNEAU
78.74" X 39.37
YEAR 2023

MARCOS PÉREZ

My artwork is an attempt to create a new visual reality through a constant interplay between drawing and stain, transparency and texture, chance and control. Growing up in the countryside, I draw inspiration from nature to create small "microcosms" that reflect my own vision and sensations of the world around me. As the creator of my work, I use color in a particular way, complementing it with drawing and texture to achieve depth and expressiveness. My color blindness is a challenge that I face in every piece, which drives me to explore the use of color in a more conscious and creative way. Through my work, I aim to create my own language that reflects my personal vision of the world and challenges viewers to see things differently.





NOBILITY SERIES
SIZE PANNEAU
78.74" X 39.37
YEAR 2023

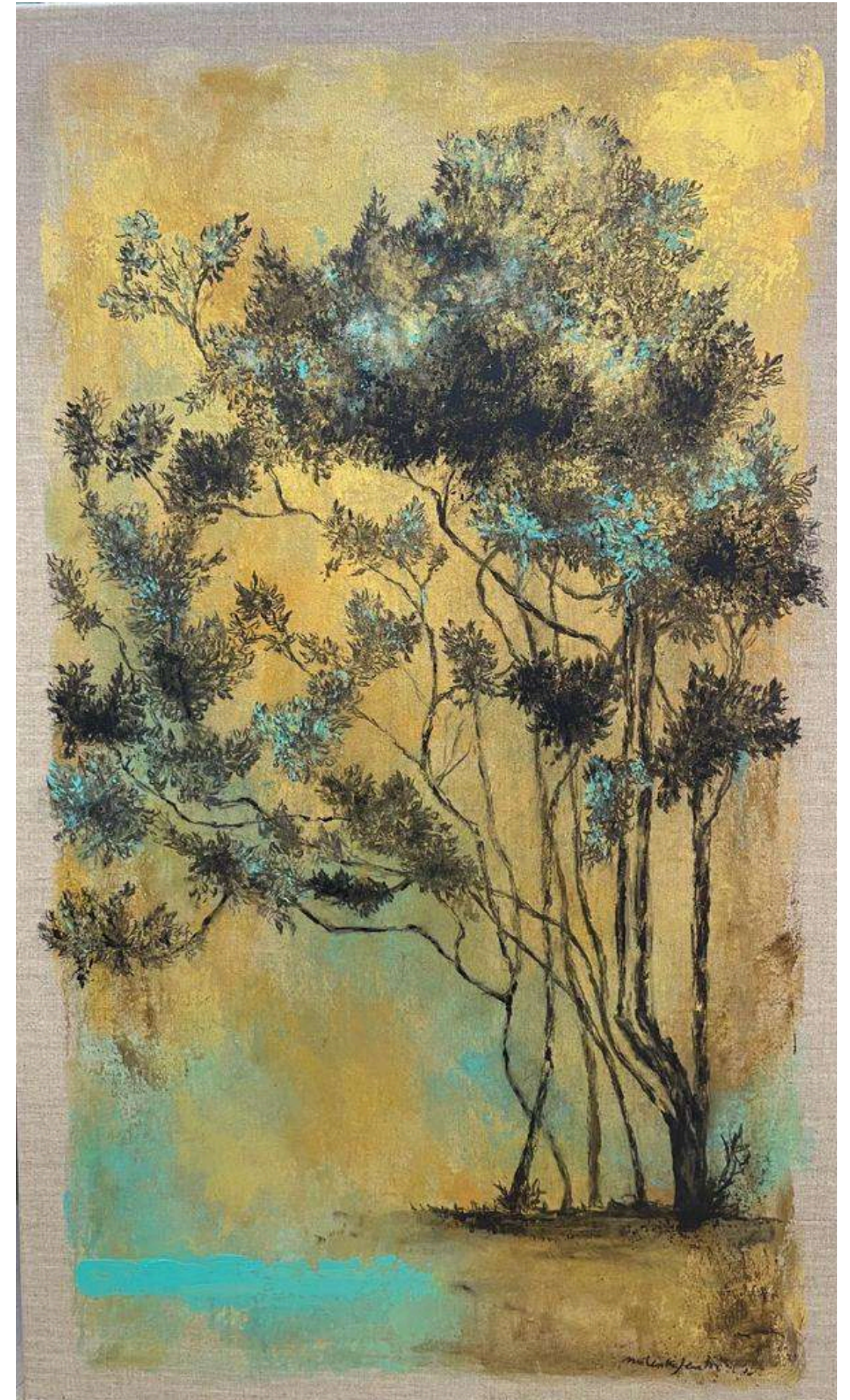


MILENKA JERETIC

My art is captivated by the ethereal beauty of trees. These magnificent beings, like us humans, possess a unique uniqueness that fascinates me. As I delve deeper into their world, I cannot help but recognise the striking similarities between their intricate ecosystems and our own. The interconnectedness, resilience and importance of trees in sustaining life have become an unwavering source of inspiration for me.

After facing a personal health issue, I experienced a profound transformation, gaining a new appreciation for the meaning that trees represent: life in its purest form, reminding us of the delicate balance we share with the natural world. In light of this realisation, my artistic endeavours have taken a deliberate turn.

The focus of my work is to achieve the representation of the deepest part of the human soul through the majesty of trees and the life they have given us. I especially want to show the native species that have been an essential part in the development of diverse cultures and the sustenance of countless ancestral peoples.





GOLDEN FOREST SERIES
SIZE PANNEAU
78.74" X 39.37
YEAR 2023

PATRICIA TORO RIBBECK

Women and Women's Things

Be captivated by the mysteries of life and art. This is what the artist, Patricia, proposes in this art work starring by women.

Beauty and harmony are present, they are evident, the language is clear and sweet.

The purity of the form, the clarity of the volumes is concrete and simple.

The way in which the plastic is united, the technique of oil, and the handling of color, shape her painting.

Her hands and imagination shape her sculpture made of stoneware ceramics, with dedication, freedom, and without limits.

Discover the magic and mystery of "Women".





LUXURY SERIES
SIZE PANNEAU
78.74" X 39.37
YEAR 2023

SONIA KOCH

About my art:

In the last years ,my artwork searches to express the beauty, exuberance and energy of the vegetal world, whose shapes, textures and colors amaze me without limits.

The color is essential in my artistic process ,such as nature is multicolored, in my paintings , I feel the need to capture this vitality through intense and light colors.

The artistic technique that I use is acrylic on canvas in various formats, a medium that has allowed me to express myself with freedom.

My artwork has been exhibited in Chile, USA, Colombia, Argentina, France, Spain, Dominican Republic, in several collective and solo exhibitions.





**IMAGINARY GARDENS
SERIES
SIZE PANNEAU
78.74" X 39.37
YEAR 2023**



SOUTH TRIP GALLERY



GALLERY OF CHILE AND THE WORLD

CLAUDE