



OGB ARCHITECTURAL CEILINGS



“A LEADER IN LUXURY WOOD CEILINGS”



FOREST
STEWARDSHIP
COUNCIL

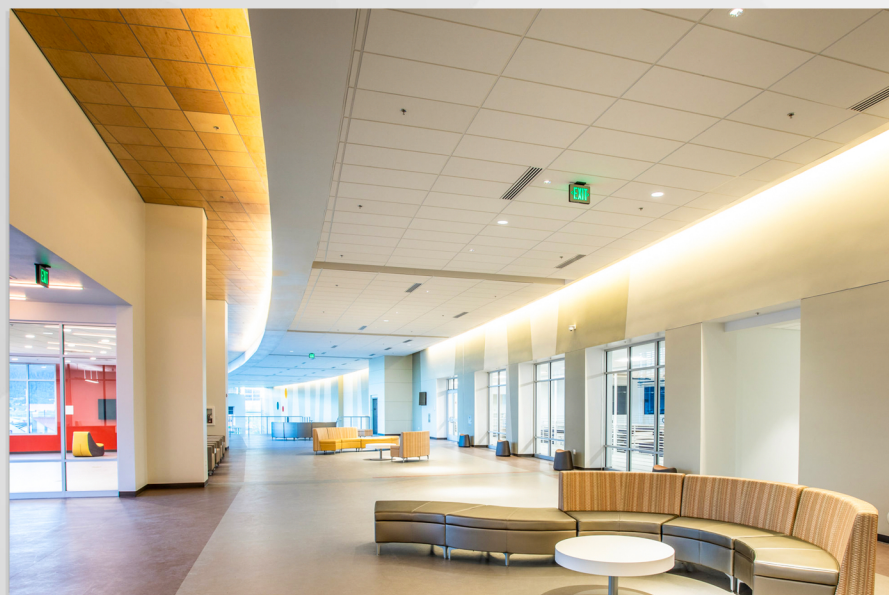


AWI

ARCHITECTURAL
WOODWORK
INSTITUTE

Drop In Tiles

Ceiling Application



LEED Credits

BD+C/BPD&O

- Sourcing of Raw Material
- Material Ingredients
- Environmental Product Declaration

BD+C

- Low Emitting Materials (Finishes)
- Low Emitting Materials (Substrates)

LEED Options are not standard & pricing is available upon request.

Ideal Applications

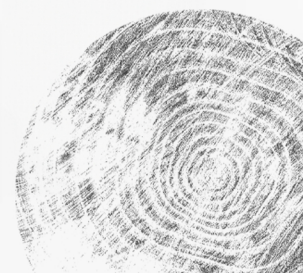
Offices Airports Lobbies
Colleges Hallways Boardrooms

Perforated & Channeled
Options Available

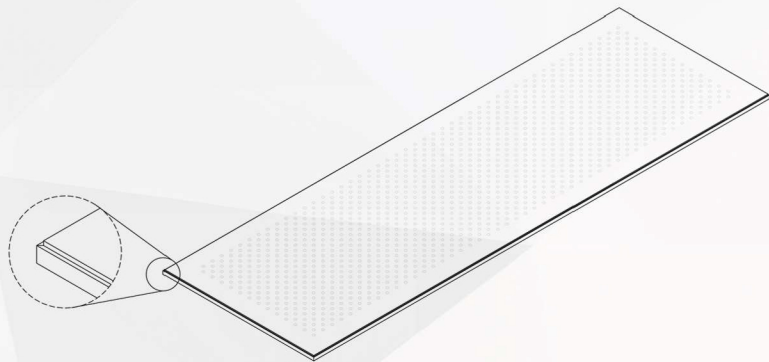
Standard Wood Species



Standard Wood Stains

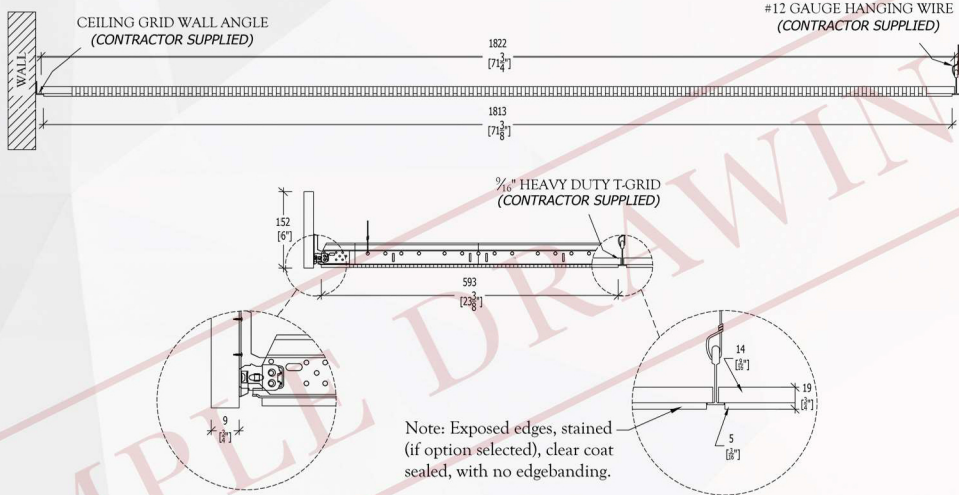


CEILING PANEL LEGEND	
Job Name:	OGB ARCHITECTURAL MILLWORK
Product #:	OGB-DINP-2472TE916
Material:	FSC Walnut Veneer on Class A MDF substrate
Tile Dimension:	23 1/4" X 71 3/4"
Stain:	None
Finish:	Clear Satin



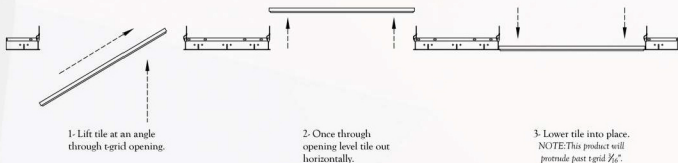
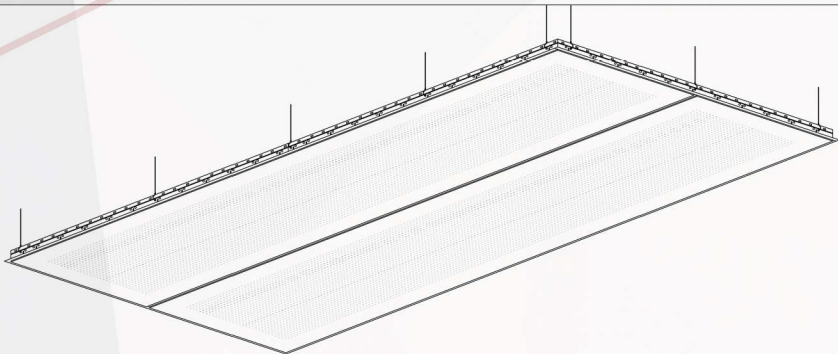
OGB-DIP2-2472TE916
1/1.1 Product Overview

OGB Architectural Ceilings
5711 Paseo Del Norte, NE Suite B
Albuquerque, NM 87113
(505) 998-0000
www.ogbam.com



OGB-DIP2-2472TE916
1/1.3 Elevation Detail

OGB Architectural Ceilings
5711 Paseo Del Norte, NE Suite B
Albuquerque, NM 87113
(505) 998-0000
www.ogbam.com



OGB-DIP2-2472TE916
1/1.4 Installation Details

OGB Architectural Ceilings
5711 Paseo Del Norte, NE Suite B
Albuquerque, NM 87113
(505) 998-0000
www.ogbam.com

PART 2- PRODUCTS

A. MANUFACTURERS – DROP IN WOOD CEILING SYSTEM

- I. Basis of Design: OGB Architectural Ceilings (A division of OGB Architectural Millwork) estimating@ogb-am.com (505) 998-0000
 - a. Product: Drop In Wood Ceiling
 1. SKU:OGB-DINP, P1, P2, P3-2424, 48, 96-L, TE, S, SE-916, 1516 (*grid*)
 2. Size: 24" x 24", 24" x 48", 24" x 96"
 3. Perforation Pattern: NP(No Perf), P1, P2, P3"
 4. Edge Profile: Lay In, Tegalur, Spline, Step Edge"
 5. Grid Size: 9/16", 15/16" "
 6. Species: Red Oak, White Oak, Cherry, Alder, Hickory, Maple, Mahogany, Birch, Beech, Walnut, Doug Fir, Ash
 7. Core: [Standard] Arries NAF Medium Density Fiberboard/ [Optional] Mediate FR Medium Density Fiberboard
 8. Fire Rating: [Optional] Class A
 9. Acoustical Backer: [Optional] SoundTex Nonwoven Acoustical Fabric.
 10. Seismic Attachment: [Optional] C-108 Seismic Safety Clip
 11. Stain: [Optional] See stain color chart- Custom match available
 12. Finish: Clear Satin [Optional] Low VOC, Abuse Resistance

B. SUSPENSION SYSTEMS

- I. T-Grid Suspension System: Standard metal heavy duty 15/16" T-Grid system which consists of Main Runners, Cross-Tees, and Wall Angle that comply with applicable ASTM C 635 requirements. System must comply with all applicable seismic codes and ordinances.
- II. Hanging Wire: 12-gauge Class 1 zinc coating, soft annealed, with a yield stress load of at least 3x the design load in accordance with ASTM A 641.
- III. Seismic Attachment Clip: Drop In wood ceiling tiles can use a seismic safety clip by way of screw through tile, and connection to grid for seismic stability.

Your Project Name
Your Project Location

09 50 00

WOOD CEILING TILES