



OGB ARCHITECTURAL CEILINGS

“A LEADER IN LUXURY WOOD CEILINGS”



FOREST
STEWARDSHIP
COUNCIL



AWI

ARCHITECTURAL
WOODWORK
INSTITUTE

Linear Open Panel

Ceiling & Wall Application



LEED Credits

BD+C/BPD&O

- Sourcing of Raw Material
- Material Ingredients
- Environmental Product Declaration

BD+C

- Low Emitting Materials (Finishes)
- Low Emitting Materials (Substrates)

LEED Options are not standard & pricing is available upon request.

Ideal Applications

Museums Airports Libraries
Colleges Hallways Offices

Solid & Veneer

Options Available

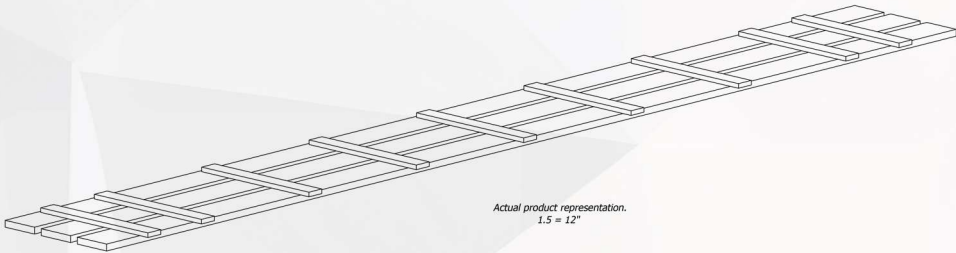
Standard Wood Species



Standard Wood Stains

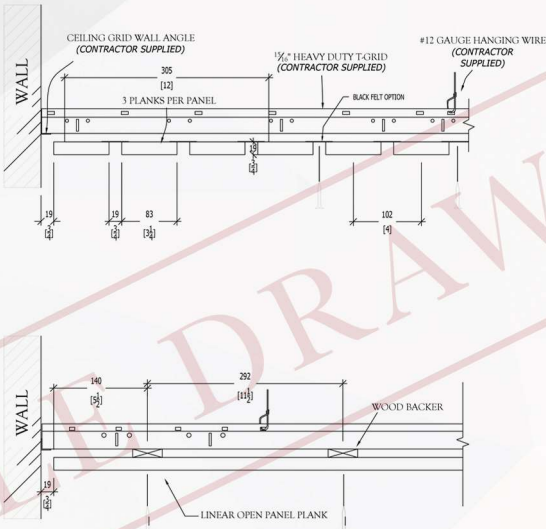


CEILING PANEL LEGEND	
Job Name:	OGB ARCHITECTURAL MILLWORK
Product #:	OGB-LOP-31495
Material:	Red Oak Hardwood
Unit Dimension:	12" x 95"
Plank Qty:	(3)- 3/4" x 3 1/4" x 95" per ft.
Stain:	None
Finish:	Class A Intumescent Clear Satin



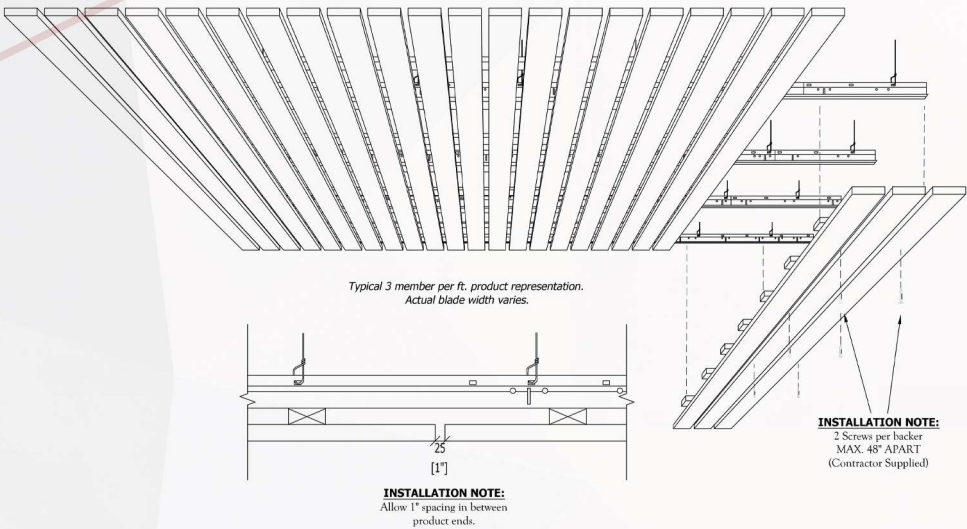
OGB-LOP-31495
1/1.1 Product Overview

OGB Architectural Ceilings
3711 Paseo Del Norte, NE Suite B
Albuquerque, NM 87113
(505) 998-0000
www.ogbam.com



OGB-LOP-31495
1/1.3 Elevation Detail

OGB Architectural Ceilings
3711 Paseo Del Norte, NE Suite B
Albuquerque, NM 87113
(505) 998-0000
www.ogbam.com



OGB-LOP-31495
1/1.4 Installation Details

OGB Architectural Ceilings
3711 Paseo Del Norte, NE Suite B
Albuquerque, NM 87113
(505) 998-0000
www.ogbam.com

PART 2- PRODUCTS

A. MANUFACTURERS – LINEAR OPEN PANEL WOOD CEILING SYSTEM

- I. Basis of Design: OGB Architectural Ceilings (A division of OGB Architectural Millwork) estimating@ogb-am.com (505) 998-0000
 - a. Product: Solid/Veneer Linear Open Panel
 1. SKU: OGB-LOP-31495 (Planks: 3 Width: 3-1/4" Length: 95") Ex.
 2. Panel Dimension: 12" x 95", 119"
 3. Plank Width: 3-1/4", 3-1/2", 3-3/4", 5-1/4", 5-1/2", 5-3/4"
 4. Plank Length: Veneer- 95, 120/Hardwood- 60, 72, 84, 96, 108, 120, 132, 144"
 5. Planks per ft: 2, 3
 6. Plank Reveal: 1/4", 1/2", 3/4"
 7. Reveal spacer: [Optional] Black felt fiber spacer.
 8. Species: Red Oak, White Oak, Cherry, Alder, Hickory, Maple, Mahogany, Birch, Beech, Walnut, Doug Fir, Ash
 9. Core: [Standard] Arries NAF Medium Density Fiberboard/ [Optional] Mediate FR Medium Density Fiberboard (Only for Veneer products)
 10. Fire Rating: [Optional] Class A, Class B
 11. Backer Type: Standard, Flexible
 12. Backer Color: Black [Optional color]
 13. Stain: [Optional] See stain color chart- Custom match available
 14. Finish: Clear Satin [Optional] Class A/B Intumescent coating (Only for solid wood)

B. SUSPENSION SYSTEMS

- I. T-Grid Suspension System: Standard metal heavy duty 15/16" T-Grid system which consists of Main Runners, Cross-Tees, and Wall Angle that comply with applicable ASTM C 635 requirements. System must comply with all applicable seismic codes and ordinances.

Your Project Name
Your Project Location

09 50 00

LINEAR OPEN PANEL WOOD CEILING