



# OGB ARCHITECTURAL CEILINGS

“A LEADER IN LUXURY WOOD CEILINGS”



FOREST  
STEWARDSHIP  
COUNCIL



**AWI**

ARCHITECTURAL  
WOODWORK  
INSTITUTE

# Panel Grilles

Ceiling & Wall Application



Great for  
Ceilings & Walls

## LEED Credits

BD+C/BPD&O

- Sourcing of Raw Material
- Material Ingredients
- Environmental Product Declaration

BD+C

- Low Emitting Materials (Finishes)
- Low Emitting Materials (Substrates)

LEED Options are not standard & pricing is available upon request.

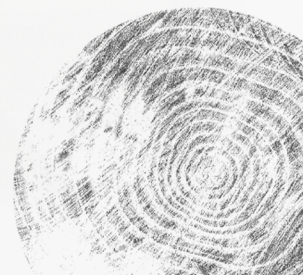
## Ideal Applications

Performing Arts    Airports    Colleges  
Retirement Homes    Casinos    Offices

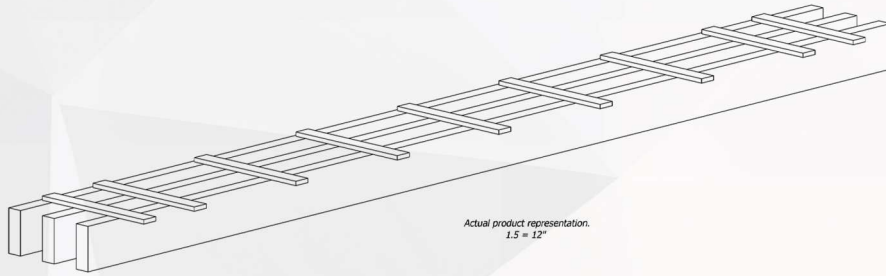
### Standard Wood Species



### Standard Wood Stains

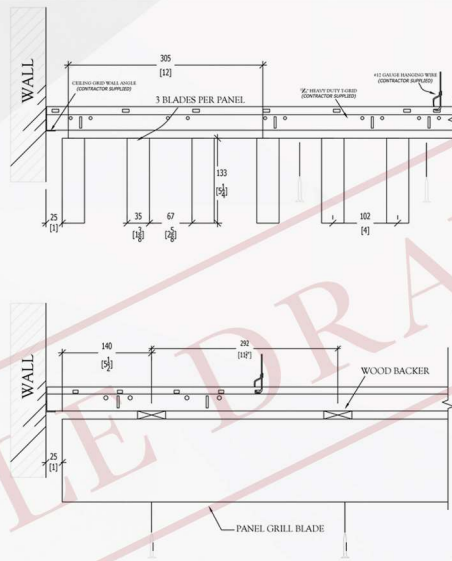


CEILING PANEL LEGEND	
Job Name:	OGB ARCHITECTURAL MILLWORK
Product #:	OGB-PG3-2-12695
Material:	FSC Red Oak Hardwood
Unit Dimension:	12" x 95"
Blade Qty:	(3)- 1 3/8" x 5 1/4" x 95" per ft.
Stain:	Option not included
Finish:	Class A Intumescent coating (Clear Satin)



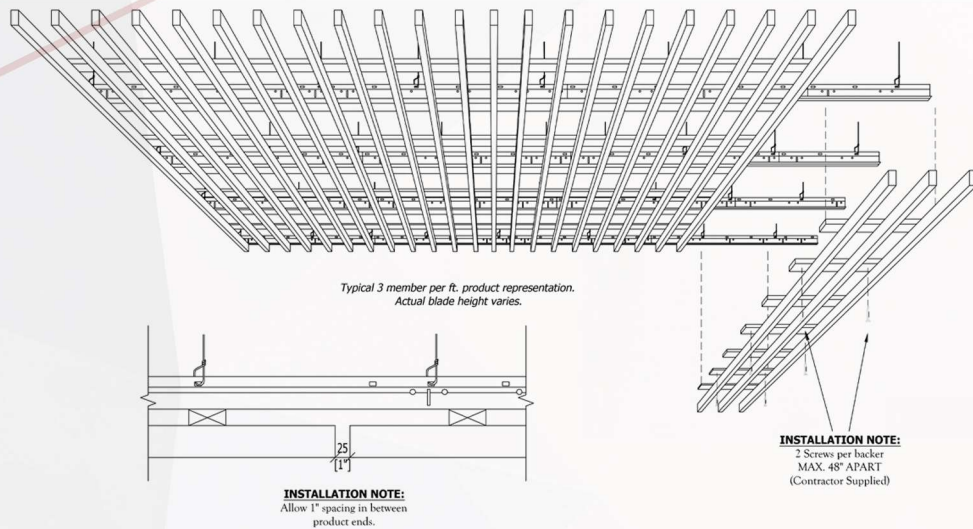
OGB-PG3-2-12695  
1/1.1 Product Overview

OGB Architectural Ceilings  
1711 Paseo Del Norte, NE Suite B  
Albuquerque, NM 87113  
505-998-0000  
www.ogb-am.com



OGB-PG3-2-12695  
1/1.3 Elevation Detail

OGB Architectural Ceilings  
1711 Paseo Del Norte, NE Suite B  
Albuquerque, NM 87113  
505-998-0000  
www.ogb-am.com



OGB-PG3-2-12695  
1/1.4 Installation Details

OGB Architectural Ceilings  
1711 Paseo Del Norte, NE Suite B  
Albuquerque, NM 87113  
505-998-0000  
www.ogb-am.com

## PART 2- PRODUCTS

### A. MANUFACTURERS – PANEL GRILLE WOOD CEILING SYSTEM

- I. Basis of Design: OGB Architectural Ceilings (A division of OGB Architectural Millwork) [estimating@ogb-am.com](mailto:estimating@ogb-am.com) (505) 998-0000
  - a. Product: Solid Wood Panel Grille
    1. SKU: OGB-PG3-12495 (Blades: 3 Height: 3-1/4" Length: 95") Ex.
    2. Blade Width: 3/4", 1", 1-1/4"
    3. Blade Height: 1-1/2", 2-1/4", 3-1/4", 4-1/4", 5-1/4"
    4. Blade Length: 60, 72, 83, 95, 107, 119, 132, 144" (Industry or Exact)
    5. Blades per ft: 3, 4, 5, 6, 8, 10
    6. Blade Spacing: 1/2", 3/4", 1", 1-1/4", 1-3/8", 1-5/8", 2", 2-1/4", 3", 3-1/4"
    7. Species: Red Oak, White Oak, Cherry, Alder, Hickory, Maple, Mahogany, Birch, Beech, Walnut, Doug Fir, Ash
    8. Fire Rating: [Optional] Class A, Class B
    9. Backer Type: Standard, Flexible, Notched, Standard & Dowel
    10. Backer Color: Black [Optional color]
    11. Stain: [Optional] See stain color chart- Custom match available
    12. Finish: Clear Satin [Optional] Class A/B Intumescent coating

### B. SUSPENSION SYSTEMS

- I. T-Grid Suspension System: Standard metal heavy duty 15/16" T-Grid system which consists of Main Runners, Cross-Tees, and Wall Angle that comply with applicable ASTM C 635 requirements. System must comply with all applicable seismic codes and ordinances.
- II. Hanging Wire: 12-gauge Class 1 zinc coating, soft annealed, with a yield stress load of at least 3x the design load in accordance with ASTM A 641.
- III. Attachment: Panel Grille Wood Ceilings are attached by way of (2) screws per backer, every other backer, into the grid, for seismic stability.

Your Project Name  
Your Project Location

09 50 00

PANEL GRILLE WOOD CEILING