

MAY 2026

**2785 Leisure Way
Melbourne, FL 32935
(321) 255-4494**

Monday-Friday: 8:30 am–4:30 pm
Saturday: 9:30 am–12:30 pm
Sunday: CLOSED
www.bcwpsc.org



Friendship Flyer

President's Message

With the arrival of May, it looks like the summer weather has finally arrived. For those of you who “enjoyed” the free sauna during our 2 weeks of no air conditioning last month, we apologize for the inconvenience. We hope that issue is finally resolved. Thanks again for your patience.

Please join us in supporting R.E.D Friday by wearing a Red Shirt on Friday. The tradition stands for “Remember Everyone Deployed”, a weekly reminder that freedom is not free and that many of our brothers and sisters are still away from home protecting our way of life.

Don't forget to help us remember and honor a hero for Memorial Day. We will be posting photos on the Bulletin Board next to Travel in the reception area. For more details on how you can participate, please see the article on page 2. And don't forget to check out the board for new photos each time you're here.

If you missed our Spring Fling Dinner/Dance on April 17, you missed a fun evening. Winners for the Best Decorated Spring Hat were Sarah Shuey, 1st place; Rosalie Pollard, 2nd place; and Kathleen Hardesty, 3rd place. Our Balloon Game was won by Diane Weinzierl and Sharon Hartford. Janice Oppelt won our 50/50 Raffle and the Door Prize was won by Rosalie Novak. Congratulations to all the winners and thanks all the volunteers who worked hard to make this dinner a huge success. Our next event will be later this fall – watch for details in an upcoming newsletter.

To close out this month with a little humor, one of our travel volunteers sent this to me and I thought you'd enjoy it:

A group of Americans was traveling by tour bus through Switzerland. As they stopped at a cheese farm, a young guide led them through the process of cheese making, explaining that goat's milk was used. She showed them a lovely hillside where many goats were grazing. “These,” she explained, “are the older goats put out to pasture when they no longer product.” She then asked, “What do you do in America with your old goats?” A spry old gentleman answered, “They send us on bus tours!”

Don't forget we will be **closed on Monday, May 25th for the Memorial Day Holiday.** We hope you have a safe and fun holiday.



Officers

President: Diane Weinzierl
Vice President: Janice Oppelt
Secretary: Lori Ebbensgard
Treasurer: Colleen Barneman

Directors

Celeste Garcia: Ginny Parker
Barbara Carlson: Janet Smith
Beverly Morgan: Sharon Sneary
Pam Page: Rosann Testa

Staff

IT Systems Admin: John Efird
Webmaster: Maureen Reeder
Sunshine: JoAnn Efird
Newsletter: Nilda Rosario

Directory

President: president@bcwpsc.org
Secretary: secretary@bcwpsc.org
Treasurer: treasurer@bcwpsc.org
Scheduling: scheduling@bcwpsc.org
Sponsorships: sponsorship@bcwpsc.org
Information: info@bcwpsc.org
Webmaster: webmaster@bcwpsc.org
Travel Office: travel@bcwpsc.org
Front Desk: reception@bcwpsc.org
Bridge Club: bridge@bcwpsc.org
Newsletter: news@bcwpsc.org
IT Admin: itadmin@bcwpsc.org

Contents

President's Message 1
Important News 2-3
Calendar of Events 4-5
Activities & Games 6-11
Travel News 12-13
Our Sponsors 14
In Every Issue 15

MISSION STATEMENT

Our mission is to provide a welcoming and engaging environment where seniors can stay active, learn new skills, and build lasting friendships. Through a wide variety of classes, games, arts, and social activities, we celebrate independence, creativity, and community connection.

There are no strangers here—only friends you have yet to meet!



IMPORTANT NEWS

MONTHLY BOARD MEETING

The WPSC Board of Directors meetings are held on the 2nd Monday of each month at 9:30 am. The next meeting will be **May 11 at 9:30 am, Room 117**. All WPSC members are welcome to attend.



Memorial Day is a time to remember and honor the brave American men and women who gave their lives while serving in the United States military to protect our country and our freedoms.

We invite you to help us honor these heroes by sharing the name of a loved one who served and passed. Please complete a description card (in the lobby) and bring a wallet-size photo to be displayed on our Memorial Day Bulletin Board in the lobby.

Card Information: Name, Branch of Service, Rank, Location Served (ex: WWII, Vietnam), Date of Birth, Date of Death and Your Name and How Related.



Team: "SAVE THE GIRLS"
Where: Wickham Park Senior Center
2785 Leisure Way, Melbourne, FL 32935
When: Sunday, May 3, 2026
Time: 1:00-4:00 pm

\$20.00 Donation to Play
Door Prizes - Raffles - Goodies
Friendship - Fun!

Prize for Most Buncos, Most Games & Least Games and Last Bunco

Please bring a dish or finger food to share. Water and coffee will be provided. Please call or text **Ginny Parker** at 321-698-0445. We need to be sure we have enough table space for all to play.

Directions to the WPSC: Turn East onto Leisure Way from Wickham Road between Parkway and Post Roads. The event is in the building next to the Community Center.

WPSC Member Frank Beckage and his Grandson Noah returning from an Honor Flight on April 11, 2026.



LOOKING FOR A WORTHY CHARITABLE DONATION ORGANIZATION

Wickham Park Senior Center (WPSC) is a 501(c)3 charitable organization and as such is eligible to receive charitable donations. We would like to thank the following people for their generous donations to WPSC in FY2026:

- Sharon Adams
- Janet & Vaughn Eastman
- Maria Luhn
- Gayle Schanck
- Melbourne Women's Club

Thank You for your donation!

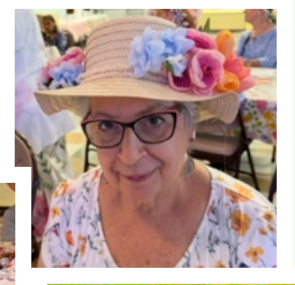
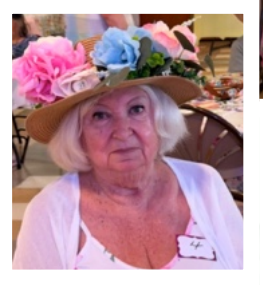
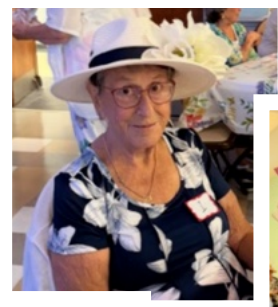
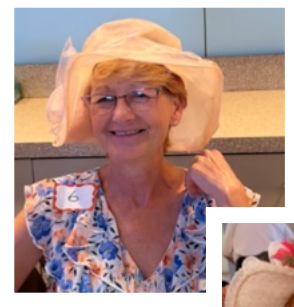
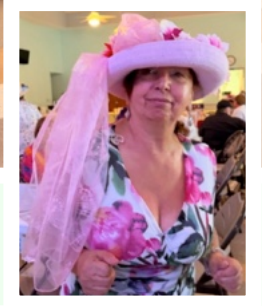
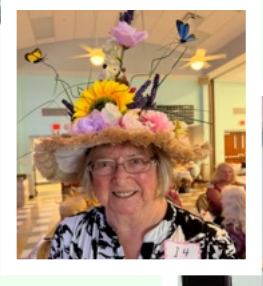
Please consider donating to WPSC, if you find you have extra funds in your charitable donations bucket.

WPSC OFFERS FREE LIFETIME MEMBERSHIP TO ANYONE AGE 90 & ABOVE (Effective 8/1/25)

If you are age 90 or older, you are now entitled to FREE Lifetime Membership to Wickham Park Senior Center. Just stop by the Front Reception Desk, show them your ID and they will get your membership updated. Member activity participation fees (usually \$1, but can vary depending on the activity) must still be paid to the program manager for each activity. Also, if you're age 95 or older, you can receive a FREE Bingo Package to play Bingo at WPSC. Show your lifetime membership card and join us to play Bingo.



SPRING *Fling*



CALENDAR OF EVENTS

MAY 2026

ACTIVITIES	MON	TUES	WED	THURS	FRI	SAT	SUN
Bingo (Doors Open at 10:00a)		11:15–2:00p			11:15–2:00p		
Bob Ross Style Beginners Oil Painting with Hobo Bob (CRI) (3rd & 4th Thursdays)				5/21 & 5/28 1:00–5:00p			
Bones & Balance (Register at 9:45a)	10:00–11:00a						
Bridge: Beginner Class	For Virtual Classes please see our website at www.bcwpssc.org and click "Bridge" icon						
Chat (Virtual)					9:30–11:00a		
Duplicate On-Site:	Noon–3:30p		Noon–3:30p			Noon–3:30p	
Beginner Class			9:00–11:00a	No Bridge Classes April 8 thru July 11			
Intermediate Class	10:00–Noon	No Bridge Classes April 8 thru July 11					
Duplicate Virtual Class / BBO Platform				12:15p			
Party Bridge			12:30–4:00p				
Rogue		12:15–4:00p					
Rubber				1:00–4:00p		12:30–3:30p	
Bunco (1st & 3rd Thursdays)				5/7 & 5/21 1:00–4:00p			
Chair Yoga		3:00–4:00p					
Chefs for Seniors Topic: Salads & Dressings				5/14 11:00–12:30p			
Color Pencil Portrait for Beginners			9:40–Noon				
Cornhole Tournaments (2nd & 4th Sundays)						(12:30p Set-up & Practice)	5/10 & 5/24 1:30p
Euchre			6:00–9:00p				
Fitness Class For Seniors (Intro) (2nd & 4th Tuesdays)		5/12 & 5/26 10:00–11:00a	Room 117				
Fusion Glass Workshop with Lauren			Project: Fused Glass Lighted Panel Sign-up Ends on May 8			5/16 Noon–3:00p	
Hand & Foot	8:45–Noon				8:45–Noon		
Jazzercise Lo	8:30–9:30a		8:30–9:30a		8:30–9:15a		
Line Dancing		4:15–5:30p					
Mahjong: American	Noon–3:30p			9:00–Noon			
Chinese			1:00–4:00p				
Memory Class					5/22 & 5/29 10:00–11:30a		

CALENDAR OF EVENTS

MAY 2026

ACTIVITIES	MON	TUES	WED	THURS	FRI	SAT	SUN
Pinochle	12:30–4:30p				12:30–4:30p		
Poker: Dealer's Choice		11:30–4:00p			11:30–4:00p		
Friendly	1:00–4:00p						
Pool (Billiards)	8:30–4:30p	8:30–4:30p	8:30–4:30p	8:30–4:30p	8:30–4:30p	9:30–12:30p	
	Tournament: 2nd Wednesday of the Month May 13 @ 11:00 am						
QiGong-TaiChi	8:30–9:30a		8:30–9:30a		8:30–9:30a		
Rummikub			1:00–4:00p				
Senior Law (4th Friday of the Month)					5/22 2:00–4:00p		
Senior Stitchers				10:00–Noon			
SHINE		9:00–Noon	Call for appointment first.				
Strength / Flexibility	Class is Full – Contact PM for wait list.			9:30–10:30a			
Shuffleboard	9:00–11:00a			6:00–8:30p		9:00–Noon	

Brownlie & Maxwell
Funeral Service & Crematory

(321) 723-2345
www.brownliemaxwell.com
1010 Palmetto Ave.
Melbourne, FL 32901

CIPS MRP ABR REALTOR

WATERMAN
REAL ESTATE

Linda Cass
Parishioner
321-704-5203
The.Cass.house@gmail.com
lindacass.spacecoastmls.com

Advertise in Our Newsletter!

Contact Maureen Weber
mweber@4LPi.com
(800) 950-9952 x6021



Helping you select the Medicare Health Plan that's right for you!

PlanAdvisors
FLORIDA

Kathryn Burgess & Austin Kempa
Licensed Insurance Brokers

321-507-4710 (TTY 711)
planadvisorsbrevard@gmail.com
2555 N. Courtenay Pkwy. Unit 32
Merritt Island, FL 32953
Serving Brevard County for 20+ Years!

IF YOU LIVE ALONE

MDMedAlert!™
At HOME and AWAY!

STARTING AT **\$19⁹⁵** /mo.

✓ Ambulance ✓ Police ✓ Family
✓ GPS & Fall Alert

"STAY SAFE in the HOME YOU LOVE!"

ACCREDITED BUSINESS BBB A+ Rating **800.809.3570** * md-medalert.com



ACTIVITIES & GAMES



TUESDAY & FRIDAY—Open to the Public!

Doors Open @ 10:00 am

Cards Sold @ 10:30 am–11:15 am

Early Bird Starts @ 11:15 am



Effective January 2025, we will no longer accept anything larger than \$20 bills.

Join us and play 29 games including Early-Bird, 50/50, Winner-Take-All and Progressive games. Minimum package starts at \$6. Bingo payouts adjusted based on attendance. Kitchen open from 10:00 am to 11:30 am. For more information, contact Brenda Clarson at 321-258-8837.

Bones & Balance

Mondays @ 10:00–11:00 am

Cost: \$5.00 Members / \$7.00 Non-Members



Start your week with healthy aging exercise. Chairs, weights and exercise bands will be used to improve your core strength, posture and balance. All major muscles will get a workout. Certified personal trainer and certified group fitness instructor with 29 years of experience at Pro Health/Health First. Please wear comfortable shoes! For more information, contact **Marcia Luhn** at 321-543-6358.

Bob Ross Style Beginners Oil Painting with Hobo Bob (CRI)

3rd & 4th Thursday: May 21 & 28 @ 1:00–5:00 pm

Cost: \$50.00 PP (Includes All Supplies & WPSC Costs)

Sign-Up Sheet at Front Desk—Limit 6 People per Class

NO OIL PAINTING CLASSES IN JUNE



Come join us for a lot of fun!! Paint a beautiful landscape painting with us. Classes will be held on the third Thursday of each month; an overflow class will be held on the fourth Thursday of the month if there is

enough interest. Please call the Center 321-425-5533 or come into the front desk and sign up.

For May we'll be painting *Serenity*, a painting with a wonderful sky, mountains and a big tree in the foreground. This painting is good for beginners, and you should be quite pleased with your finished painting.



This painting will bring out the inner artist you may not even know you have. All supplies, brushes, canvas, and aprons are provided, and you'll walk away with a wonderful finished, unframed oil painting that you will be quite proud of. Remember to wear your painting clothes. The class is small, with just six participants, so Hobo Bob (CRI) has plenty of time to work with you as you paint your masterpiece.

Special Note, there will be NO Oil Painting Classes in June 2026. We'll be on vacation.

Duplicate Bridge

On-site Games: Mon., Wed. & Sat. @ 12:00–3:30P

Cost: \$7.00 Members / \$9.00 Non-Members

CLASSES:

- **NO BRIDGE CLASSES APRIL 8 THRU JULY 11**
- **Online Virtual Classes: Thursdays @ 12:15P on the BBO platform / Online classes \$5.00**

On-site Duplicate bridge games are on Mondays, Wednesdays and Saturdays. Virtual online classes are also available. For the online schedule, please check out the latest on the website under the Bridge tab. Contact **Pam Page** at 321-537-0907 or pam_page@bellsouth.net for bridge-related questions.

ACTIVITIES & GAMES

Party Bridge

Wednesdays @ 12:30–4:00 pm

Cost: \$5.00 Members / \$7.00 Non-Members

Please contact **Tom Sanders** at 321-960-1894 prior to coming to this bridge for the first time.

Rogue Bridge

Tuesdays @ 12:15–4:00 pm

Cost: \$1.00 Members / \$3.00 Non-Members

Contact Patricia Rosenthal at 321-626-5419.

Rubber Bridge

Thursdays @ 1:00–4:00 pm & Saturdays @ 12:30–3:30 pm

Cost: \$2.00 Members / \$4.00 Non-Members

Come on out for an afternoon of enjoyment at the bridge table. The Thursday and Saturday point of contact is **Gayle Schanck** at 541-821-7070.

Bunco

1st & 3rd Thursdays, **May 7 & 21** @ 1:00–4:00 pm

Cost: \$6.00 Members / \$8.00 Non-Members



Please join us every 1st and 3rd Thursday of the month for Bunco and arrive by 12:45 pm. Don't forget to bring your current membership card. Bunco ends about 3-3:30 pm. Contact **Lisa Hofmann** at 760-717-6049 for more details and reservations (for set-up purposes). See you there for this fun activity. All you have to know is how to throw three dice.

Chair Yoga

Tuesdays @ 3:00–4:00 pm/Sign-in @ 2:45 pm

Cost: \$1.00 Members / \$3.00 Non-Members

This class is designed to help with overall wellbeing for the body and mind. Stretches and movements that will help increase mobility, flexibility, strength and balance. A focus on posture and breathing helps calm the mind, helps reduce stress and increase oxygen flow. Contact **Shelly Anderson** at 321-626-1969.



Chef for Seniors

Classes @ 11:00 am–12:30 pm

Cost: \$6.00 Members / \$8.00 Non-Members

- **May 14 - Salads & Dressings**
- **July 16 - Summer Treats**
- **September 10 - Fall Flavors**
- **November 12 - Healthy Holidays**

Join Chef Jillian for a Cooking For Seniors Class. Each Class includes an interactive cooking demonstration, free recipes, cooking tips and food tasting. Please sign up at front desk to reserve your spot. All proceeds are donated by Chef Jillian to The Children's Hunger Project, Brevard County's Backpack Program.



Sponsored  and



Color Pencil Portrait Class for Beginners

Wednesdays @ 9:40 am–12:00 pm

Cost: \$1.00 Members / \$3.00 Non-Members



Learn how to create a beautiful drawing from your favorite photograph! Bring your own portrait photograph to copy—Size: 5x8 (or other appropriate copy size). Supplies you will need to bring:

Prismacolor Color Pencils, Watercolor Paper, Eraser, Pencil Sharpener (optional). For more information contact **Donald Langford** at 321-298-6839.

Hand & Foot Card Game

Mondays & Fridays 8:45 am–Noon / Setup @ 8:30 am

Cost: \$1.00 Members / \$3.00 Non-Members

Join this group of friendly and competitive players for a time well spent.



Contact **Beverly Morgan** at 303-458-8273 for more information.

ACTIVITIES & GAMES

Cornhole Tournaments

2nd & 4th Sunday, **May 10 & 24 @ 1:30 pm**
 Setup & Practice Starting @ 12:30 pm
 Cost: \$6.00 Members / \$8.00 Non-Members
 (Annual Membership for 50+ is \$20)

Cornhole is welcome to all ages! Tournaments will be held indoors at the WPSC every 2nd and 4th Sundays (excluding conflict with holidays). Don't forget to scan your membership card at the front desk.

March 15 Winners:

1st Place: Kit Kat & Rich F.
 2nd Place: Daryl J. & Amy L.
 Pile On: Johnna



March 22 Winners:

1st Place: Kathy & Norm
 2nd Place: Kit Kat & Frank
 Pile On: Kit Kat



April 12 Winners:

1st Place: Daryl & Amy L.
 2nd Place: Kathy & Mona
 Pile On: Don M.



Rules for Senior Center:

- Age 50 to 69: 27-ft. front edge to front edge
- Age 70 to 79: 25-ft. front edge to front edge
- Age 80 to 90: 23-ft. front edge to front edge
- Age 90 Plus/Non-Ambulatory: 21-ft. front edge to front edge

For any questions, please contact **Jay Koeller** at 321-794-6400 (jkoeller18@gmail.com) or **Amy Longtin** at 321-205-5161 (ajglrt@yahoo.com).

Fusion Glass Workshop w/Lauren

NEXT WORKSHOP IS MAY 16 @ 12:00-3:00 pm

****SIGN UP ENDS ON MAY 8****

Project: **FUSED GLASS LIGHTED PANEL**

Cost: \$75 PP (Includes All Materials & Kiln-Firing of Project & WPSC Costs, tkt processing fee is extra)

A Perfect Way to Unwind! Are you looking for a captivating and relaxing way to embrace your artistic side? Join us for a delightful fused glass workshop designed especially for those eager to try something new—no prior experience necessary! If you've never heard of "fusible glass," don't worry—I'll be there to guide you through every step!

What You'll Create. You'll design a charming lighted panel (approx. 10.5" x 5.5") crafted from fused glass. If you've participated in this as a previous workshop and already made one, you'll have the option to create a new panel without the base for a reduced fee. Your masterpiece will be beautifully completed after it's kiln-fired, ready for you to pick up!



What's in Store For You. We'll kick off with a brief introduction to the fascinating world of kiln-fired glass. Then, it's your turn to shine as you create a one-of-a-kind glass piece using a wonderful selection of materials. You can choose from pre-fired pieces that require no cutting or learn to use simple tile nippers for crafting basic shapes. Once your project is complete (about a week later), it will be kiln-fired and ready for pick-up at WPSC for members or at my studio in Merritt Island. Prefer it delivered to your door? That's an option too!

Highlights of the Workshop. Open to participants aged 16 +, whether you have artistic talents or not. A calm and enjoyable atmosphere. An ideal chance to bond with friends over a creative adventure. Explore a new artistic medium

Class size is limited to 16 participants (with a minimum of 4 required), so be sure to reserve your spot early! Sign up online at <http://www.purplepass.com/lightedpanel26> via the sign-up sheet at the WPSC lobby. Call Lauren M-F 10am-5pm at 310-483-3229, or email info@glassbylauren.com.

Let's Spark Your Creativity Together! Reserve your spot today and enjoy the magic of fused glass art.

Closed-toe shoes required for safety.

ACTIVITIES & GAMES

Euchre

Wednesdays @ 6:00–9:00 pm

Cost: \$5.00 Members / \$7.00 Non-Members

Members must scan their card when entering and non-members must sign in.

Euchre has been a great success and as our Euchre continues to grow, it is now common to have 5-6 tables in action. We try to promptly start by 6:00 pm which means we should be signed in no later than 5:50 pm to allow time to set up the correct 3/4 player table configuration and draw for your seats. The payout structure has been altered so more people are sharing the prize pool. That means if there are up to 30 players even eighth takes home a piece of the purse. For more information, contact **Jay Koeller** at 321-794-6400 (jkoeller18@gmail.com).

Introduction to Fitness Class for Seniors

2nd & 4th Tuesdays: **May 12 & 26** @ 10:00–11:00 am

Cost: \$1.00 Members / \$3.00 Non-Members

Limited to 10 Participants / Signup sheet at Front Desk.

Equipment: All necessary equipment is provided.

Gentle Movement • Strength • Confidence • Community

Join us for a **FREE one-hour fitness class** designed specifically for older adults who want to stay active, improve mobility, and build strength in a safe and supportive environment. This class is perfect for beginners or anyone looking for a gentle way to move more and feel better. Participants should come prepared to **sit and stand if possible**, but all exercises can be **modified** to match individual comfort levels and physical capabilities. Everyone is welcome — no experience needed.

What to Expect: Each session includes:

- A light warm-up to get the body moving comfortably
- Stretching and flexibility exercises to improve range of motion
- Easy resistance and light weight exercises to support balance and strength
- Movements performed both seated and standing

What to Bring:

- Comfortable clothing
- Water bottle
- Supportive shoes
- A positive attitude!

Questions? Contact **Michael Sands** at 910-232-7543.

Jazzercise Lo

Mon. & Wed. @ 8:30–9:30 am and Fri. @ 8:30–9:15 am
Members: \$60.00/Month & Walk-ins \$15.00/Day

Join us for a fun and energized Jazzercise Lo class. Dance away those extra calories using Low Impact moves that yield **MAXIMUM** results! We use muscles, not momentum, to get a total body workout without the impact on your joints. For more information, contact **Ginny Parker** at 321-698-0445.

Line Dancing

Tuesdays @ 4:15–5:30 pm

Cost: \$6.00 Members / \$8.00 Non-Members



Bring the Joy of Spring into your life by trying our Fun for Everyone Line Dance Class every Tuesday 4:15-5:30. Exercise while making new friends. **Sue Duncan** Dance Instructor and Choreographer for over 60 years 321-505-0846.

Mahjong

American: Mondays @ Noon–3:00 pm &
Thursdays @ 9:00 am–Noon

Cost: \$1.00 Members / \$3.00 Non-Members

Chinese: Wednesdays @ 1:00–4:00 pm

Cost: \$5.00 Members / \$7.00 Non-Members

Mahjong is an activity that fosters friendly comradery and stirs the brain. Come join the fun! Contact **Patricia Rosenthal** at 321-626-5419 (American) or **Hugh McPhee** at 321-423-7698 (Chinese).



ACTIVITIES & GAMES

Memory Class

FREE TO MEMBERS – **May 22 & 29** @ 10-11:30 AM
Limited to 8 People – Sign up at Front Desk

Bring paper and a pencil and join us in a friendly, supportive environment where learning is fun and practical. Questions? Contact **John Fontana** at 916-705-8146 or email jhnfontana@yahoo.com.

Pinochle

Mondays & Fridays @ 12:30–4:30 pm
Cost: \$1.00 Members / \$3.00 Non-Members

For more information, contact **Bill Mueller** at 321-242-4999 (Mondays & Fridays).

Poker (Dealers Choice)

Tuesdays & Fridays @ 11:30 am–4:00 pm
Cost: \$1.00 Members / \$3.00 Non-Members
Contact **Bill Seigel** at 813-416-0428.

Poker (Friendly)

Mondays @ 1:00–4:00 pm
Cost: \$1.00 Members / \$3.00 Non-Members



Attention: Players Needed!
Pennies Only. Call ahead to attend. Contact **Beverly Morgan** at 303-458-8273.

Pool (Billiards)

Mon. thru Fri. @ 8:30 am–4:30 pm / Sat. 9:30 am–12:30p
Tournaments: 2nd Wednesday of Every Month @ 11:00 am
Cost: \$1.00 Members / \$3.00 Non-Members
Plus \$.50 per Day or \$2.00 per Week

There are no tournament results for April.

Next tournament is May 13. Questions? Contact **Wally Topinko** at 321-622-4977.

Reach a hyperlocal audience.

An advertisement in this newsletter is a highly effective way to promote your business to our community.



Call 800.950.9952



ACTIVITIES & GAMES

QiGong-TaiChi

Mon., Wed., & Fridays @ 8:30–9:30 am

Cost: \$5.00 Members / \$7.00 Non-Members



For over 50 years, scientists at the Institute for Aging Research, an affiliate of Harvard Medical School, have been studying what causes falls among the elderly, and how to prevent them. One of the most promising interventions is TaiChi. It

offers senior practitioners inner peace and improves balance, flexibility and mental agility. It also reduces death due to falls and injury among older adults. We focus more on the Healing Art of QiGong of TaiChi.

Laura Parsons, Certified Instructor at 321-474-5374.

Rummikub

Wednesdays @ 1:00–4:00 pm

Cost: \$1.00 Members / \$3.00 Non-Members

Rummikub is a tile-based game combining elements of the card game rummy and mahjong. It's an easy game to play and if you don't know how to play, our group will be happy to teach you. Come join us for a fun afternoon. Contact **Peggy Miles** at 732-688-6268.

Senior Law

4th Friday of the Month @ 2:00–4:00P

NEXT WORKSHOP: May 22

Cost: Free to All WPSC Members

The Slonim Law Firm invites you to attend a FREE seminar and question/answer session on the 4th Friday of each month at WPSC Room 117.

Topics:

- Last Will & Testament & Trusts
- Durable Power of Attorney & Healthcare Directives
- Digital Assets
- Medicaid and Asset Protection Options
- General Dementia Issues
- Guardianships
- Probate Matters
- Living Wills

Seating is limited. Please sign up at the front desk. Any questions, call the Law office at 321-757-5701.

Senior Stitchers

Thursdays @ 10:00 am–Noon in Room 114

Cost: \$1.00 Members / \$3.00 Non-Members

Would you like to learn to Knit or Crochet or do you already know how to Knit or Crochet? If so, please join us for a morning of



friendship and pleasant conversation while learning new skills and stitches while helping each other to share and improve our skills. What to Bring: If you are already experienced, please bring a WORK IN PROGRESS that you'd like to work on. If you're a beginner, please bring some worsted yarn and some Size 8 knitting needles or a Size G crochet hook. For more information contact **Laurie Liguori** at 917-882-9898.

Shuffleboard

Open Play: Monday 9–11:00 am

Open Practice: Thurs. 6–8:30 pm & Sat. 9:00 am–Noon

Cost: \$1.00 Members / \$3.00 Non-Members

For more information on learning how to play or participating in tournaments, call **Tom**

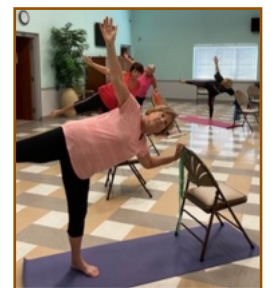
Winkelspecht at 321-446-3283 or email: tawinkii@me.com

Strength/Flexibility

Thursdays @ 9:30–10:30 am

Cost: \$4.00 Members / \$6.00 Non-Members

This is a class you won't want to miss and has everyone talking! This class will introduce greater strength and flexibility that your body will love and you will love going to. It also helps posture and alignment of the spine, helps us stay limber, agile, strong and keeps our balance in check. We



work core, arm and leg strength. This class gets full so call before you come! Please contact **Susie Salvetti** at 321-626-0282.

TRAVEL NEWS

Titanic Tour & Dinner Gala

Date: Saturday, June 20, 2026

Cost: \$169 PP

When you visit the amazing Titanic: The Artifact Exhibition, you embark on a journey back in time to April 1912, when the ship embarked on its maiden voyage! The Exhibition features more than 300 artifacts and historical items as well as full-scale room recreation. Join Captain Smith, Margaret "Molly" Brown, and additional first-class passengers for a night to remember. See the second largest piece of Titanic ever recovered, the "Little Big Piece," a 2-ton section of the original ship's hull! The Titanic First Class Dinner Gala includes a Captain's cocktail party, a tour of the Titanic: The Artifact Exhibition, a first-class dinner, and reenactments of the night of April 14, 1912.

Murder in the Speakeasy Dinner & Show

Date: Sunday, August 30, 2026

Cost: \$159 PP

Step back in time to the roaring 1920's and prepare for an unforgettable experience at The Speakeasy Murder & Other Acts of Prohibition in Orlando, FL. Soak in the lively atmosphere of a New York nightclub, complete with music, signature cocktails and delicious food. We hope you attend in costume and join the fun.

Mount Rushmore & the Black Hills & Badlands of South Dakota

Date: September 21-27, 2026

Cost: \$2,067 PP Double / \$2,567 Single Occupancy
\$200 Deposit / Final Payment Due August 1, 2026

**SOLD OUT!
WAIT LIST ONLY**

Participants MUST be able to travel independently or bring a companion who can assist. NO refunds once the vendor has been paid.

Medieval Times Dinner & Tournament

Date: Saturday, September 26, 2026

Cost: \$159 PP

During the tournament, you're given a hearty meal of soup, chicken, corn, a seasoned potato, and a pastry of the castle (vegetarian meals are also available). And remember, this is the middle ages, so your utensils are your good old-fashioned hands. Wenches walk around

the 1000 seat arena to sell you a drink or two as well. The knights battle in head-to-head combat on authentic Spanish Andalusian horses while the King and Princess look on. Located right next to the castle is the Medieval Village filled with artifacts and displays from over 800 years ago.

Savannah, GA

Date: October 4-6, 2026

Cost: \$569 PP Double / Singles Add \$145
\$100 Deposit Required

Package includes: Deluxe roundtrip motorcoach transportation; 2 Nights deluxe accommodations; 2 Great hotel breakfasts; 2 Sumptuous dinners at great local restaurants; Guided tour of Savannah; Free time to explore the famed River Street with shopping & lunch on own; Guided docent tour of the Cathedral Basilica St. John the Baptists; Ice cream social at the famed Leopold's Ice Cream; Baggage handling; All taxes are included.

Mount Dora Craft Fair

Date: Saturday, October 24, 2026

Cost: \$69 PP

Throughout this historic community, the streets come alive with more than 400 talented crafters and artists from all over the country displaying and offering for sale their finest works to the more than 300,000 visitors who are expected to attend this two-day event. Plus there's food and entertainment to round out a perfect day outdoors. This is one of Central Florida's favorite festivals and what a perfect time of the year to host a craft fair with the cooler weather and the holidays just around the corner. There is time for much shopping and lunch is on your own.

Stetson Mansion & Lunch at Cook's Buffet

Date: Tuesday, November 10, 2026

Cost: \$159 PP

Trip Advisor names a tour of the Stetson Mansion as one of the "top 10 things to do in Florida." The 1886 Stetson Mansion is the largest and most spectacular "Gilded Age" residence ever built in Florida before 1900. The Victorians started our modern day traditions like gift giving and Christmas trees. The

TRAVEL NEWS

Stetson Mansion had one of the first trees ever illuminated with electric lights. The Stetson Mansion is Florida's most historic home, but it is not a museum. It is a private residence that is lived in and welcomes guests this time of year with over the top elegant and reverent adult holiday decorations. Prior to our tour we will have lunch at Cook's buffet.

Mount Dora Christmas

Date: December 4, 2026

Cost: \$69 PP

Time: Leaves WPSC at 2:00 pm / Returns at 10:00 pm

Celebrate the 2026 holidays against a backdrop of over twomillion sparkling lights in beautiful downtown

Mount Dora. If you're looking for a way to spend an enchanted evening that will get you in the holiday spirit, visit the Mount Dora Christmas Walk for an old fashioned country Christmas. The streets come alive as they are transformed into a Christmas village. The shops will be filled to the brim with holiday gifts, allowing you to get a jump on your holiday shopping. The festivities will surround you with the sights and sounds of the holidays. Listen for angelic choirs singing your favorite Christmas Carols and musicians playing classics on their violins.

Trip includes motorcoach transportation only. There are plenty of food vendors, or if you prefer, enjoy a delicious dinner at one of Mount Dora's great restaurants. (Reservations suggested).

Please visit our website www.bcwpsc.org, for more information or call the office at 321-425-5530 Monday-Friday, 9:00 AM-1:00 PM

The Travel Office now accepts Visa, MasterCard and American Express for trip purchases. A 4% processing fee will be added to all credit card transactions. All payments must be made in person with credit card present.



Reach Our Digital Subscribers

This publication is online and emailed to our community. Drive more traffic to your website with a digital ad on MyCommunityOnline.com

Get started today! Visit www.lpicommunities.com/advertising-solutions



OUR SPONSORS

The Officers and Membership of Wickham Park Senior Center appreciates the continued support of our many Sponsors. As an all volunteer-run organization, their continued financial support allows us to offer Activities and Social events for our members.

Diamond Level Sponsors



RVH INSURANCE NAVIGATORS
LET US NAVIGATE YOU THROUGH MEDICARE



Gold Level Sponsors



Meet & Greet Schedule

Our monthly Meet & Greets with our sponsors have been scheduled for Tuesday and Friday mornings from 9–11:00 am. Each sponsor will have a table set up just outside the front door or inside the lobby to provide you with information, fun giveaways, and someone knowledgeable to answer your specific questions. Please mark your calendars and come up to meet them:

- Friday, May 1 – My Memory Clinic
- Tuesday, May 5 – Health First Health Plans
- Friday, May 8 – Tiny Dog Cleaning
- Tuesday, May 12 – Moore Insurance
- Tuesday, May 12 – St. Francis Reflections
- Friday, May 15 – Narlock Insurance
- Friday, May 15 – Faith's Fall Prevention
- Tuesday, May 19 – Brookdale West Melbourne
- Friday, May 22 – RVH Insurance
- Tuesday, May 26 – Freedom Health, LifeWave, and VITAS

IN EVERY ISSUE

WELCOME

New Members in March

Abbott, Anita	Marsh, Robert (Bob)
Abukazam, Nadia	May, Paul
Andrews, Elizabeth	Mikhaylova, Marina
Ball, Marianne	Miller, Aurora Teresa
Black, Cherrilynn (Lynn)	Molenaar, Bill
Buker, Marta	Murphy, Anitra
Cardoza Green, Donna	Notice, Winsome
Carr, Gwendolyn	Obsincs, Christine
Cassidy, Lillian	Olson, Kenneth
Constable, Ondine	Olson, Leslie
Cooper, Bairka	Papineau, Lorraine
Crawford, Pat	Parra, Gloria
Daniels, Steven	Polakowski, Robert
Dean, Shirley	Rosa, Izaida
Douglas, Donna	Runnells, Mike
Douglas, Frederick	Runnells, Rececca (Becky)
Elting, Diana	Saboy, Mike
Friedman, Anne	Sanders, Debbie
Gambino, Jane	Sinclair, Sherrie
Hanson, Deborah	Stein, Dian
Hendrickson, John	Stierna, Lois
Hewitt, Karen	Stierna, Ray
Iribarra, Mary Ann	Thomas, Lyne-Marie
Lea, Laura	Van Lerberghe, James
Lemos, Nancy Sue	Vinsant, Clayton
Long, Marty	Winner, Gwen

Wickham Park Senior Center Holiday Closures for 2026

To enable our volunteers to spend more time with their families during the upcoming holiday season, Wickham Park Senior Center will be closed on the following dates:

- **Memorial Day Holiday:**
 - Monday, May 25, 2026
- **4th of July Holiday:**
 - Saturday & Sunday, July 4 & 5, 2026
(No activity allowed in large hall, floors being waxed)
- **Labor Day Holiday:**
 - Monday, September 7, 2026
- **Thanksgiving Holiday:**
 - Wednesday, November 25, 2026
(Day before Thanksgiving)
 - Thursday, November 26, 2026
(Thanksgiving Day)
 - Friday, November 27, 2026
(Friday after Thanksgiving)
 - Saturday & Sunday, November 28 & 29, 2026
(No activity allowed in large hall, floors being waxed)
- **Christmas Holiday:**
 - Thursday, December 24, 2026 (Christmas Eve)
 - Friday, December 25, 2026 (Christmas Day)
 - Saturday, December 26, 2026
(Day after Christmas)
 - Sunday, December 27, 2026
- **New Year's Holiday:**
 - Thursday, December 31, 2026 - Closing at 12:30 pm
 - Friday, January 1, 2027 (New Year's Day)
 - Saturday & Sunday, January 2 & 3, 2027

COMMENTS?

We Value Your Opinion!

There's a SUGGESTION BOX in the lobby for your feedback or ideas on how we can enhance the experience at the WPSC!



Deadline for copy submission to the newsletter is the **15th of each month**. Please email copy to:
news@bcwpsc.org

Wickham Park Senior Center is not equipped, nor intended to be a senior care facility. WPSC activities are geared toward independent adults who are able to manage their own care, decisioning making and safety. WPSC's insurance prohibits, and WPSC cannot be responsible for, the provision of physical assistance to individuals on the premises. If an adult companion is needed, the companion may participate in the activity if they desire, regardless of age, and must pay all fees associated with the activity. WPSC reserves the right to prevent persons from being on premises if the WPSC leadership believes that person would cause harm to themselves or others.



SLONIM LAW
 Estate Planning • Probate
 Guardianship • Medicaid **Attorneys**
 Adoption and Mediation

Your local

Code: WPSC




David Netzley *Your neighborhood law firm!* David Slonim



Advertise Here!

Increase visibility in your community.



Made you look.

Advertise here to reach your local audience.

Scan to get started!



Visit lpicomunities.com/advertising-solutions




CarePlus
HEALTH PLANS

Kristine Quattrone
Licensed Insurance Agent
 Brevard & Indian River County
 Kquattrone@careplus-hp.com
 321-326-4033



Never miss our publication!

Get each new issue delivered straight to your inbox.

Scan to subscribe on MyCommunityOnline.com 