



# Friendship Flyer

2785 Leisure Way  
Melbourne, FL 32935  
(321) 255-4494

Monday-Friday: 8:30 am—4:30 pm

Saturday: 9:00 am—Noon

Sunday: CLOSED

[www.bcwpsc.org](http://www.bcwpsc.org)

DECEMBER 2024



## President's Message

As we get ready to close out 2024, I want to remind you of all the final activities we have going on:

- Our Front Desk Saturday hours have changed to 9:30 am to 12:30 pm.
- If you picked up a **Salvation Army gift tag for seniors, please remember to return your gift(s), unwrapped and with the tag attached, no later than Wednesday, December 4.** The Salvation Army will be picking them up from the Center on the morning of December 5.
- Please be sure to join us for our **Annual Meeting Wine & Cheese Reception on Friday, December 6 from 4:30 – 6:00 pm. The meeting is free to all members** - just sign up at the front desk so we can be sure to have plenty of food and beverages on hand.
- **Elections for the new WPSC Board of Directors will be held the week of December 9-13.** There are currently six (6) candidates running for five (5) Board positions, so please be sure to pick up your ballot from the front desk during that week and VOTE. You will have a chance to meet the nominees at the Annual Meeting and you can find a list of the candidates and their qualifications on page 3.



Diane Weinzierl



This past month I received some sad news that I wanted to share with you. Angela Caffo Brown, who was known by many as "Angi" at WPSC, passed away October 30, 2024 at the age of 91. Angi's family moved from Arlington, Virginia to Melbourne, Florida in 1966 where she worked for the Melbourne Police Department and then for 28 years as the attendance clerk at Melbourne High School. She attended St. John's Episcopal Church and was an active volunteer there. In 2009, after retirement, she began volunteering at Wickham Park Senior Center (even before we moved into this building) where she worked at the Front Desk and held several Board positions until March of 2020. In 2010 she was named WPSC Volunteer of the Year. Angi was one of the first people I met at the Center and she encouraged me to run for President in 2019. I have really missed her smile, her wisdom and her willingness to help make WPSC a fun place to be. A Celebration of Life service will be held on Saturday, December 28th at 10 am at St. John's Episcopal Church in Melbourne.

As we celebrate this holiday season, I invite you to please remember to thank all of our wonderful Volunteers who dedicate their time each week to keep this Center operating. Also, be sure to thank your Program Managers who also dedicate so much of their time to ensure our programs run smoothly.

Finally, just a reminder that we will be closed for the Christmas Holidays on Tuesday, December 24 through Thursday, December 26. We will re-open on Friday, December 27 (yes, we will have bingo that day).

*Merry Christmas and Happy Holidays to you and your family  
from all of us at Wickham Park Senior Center.*

## Mission Statement

**Our Mission is to provide a congenial and happy environment for seniors to enjoy activities, meet new friends, and attend educational programs. Furthermore, to provide a resource for obtaining assistance and guidance in times of need.**

**"There are no strangers here, only friends you have yet to meet!"**

The WPSC Board of Directors meetings are held on the 2nd Monday of each month at 9:30 am. The next meeting will be **December 9 at 9:30 am in Room 117**. All WPSC members are welcome to attend.

## Looking for a Worthy Charitable Donation Organization?

Wickham Park Senior Center is a 501(c)3 charitable organization and as such is eligible to receive charitable donations. We would like to thank the following people for their generous donations to WPCS in FY2024.

- Sharon Adams
- Kathleen & Andrew Cole
- Mitchell Hait
- Lawrence Nicola – in memory of Jacque Nicola
- Carol Patton (Kirby Family Fund)
- Jenny & John Potanos
- Gayle & Stephen Schanck
- Travel Expressions, Inc.

If you find you have extra funds in your charitable donations bucket anytime during the year, please consider donating to WPSC.



**Janet Smith & Elaine Same Supporting the Mega Senior Expo on November 13, 2024**

## Companion Animal Care of Brevard County, FL

*CARING FOR SENIORS, ONE PET AT A TIME or Bringing Comfort and Companionship to Seniors in Brevard County*

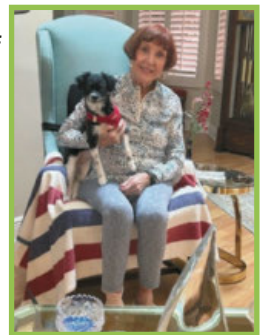
Companion Animal Care of Brevard County (CAC) is a unique non-profit organization dedicated to supporting senior citizens in Brevard County, FL who can no longer care for their beloved pets due to health-related challenges. As the only organization of its kind in Brevard, CAC provides vital services to ensure these cherished animals receive the attention and care they need.

At the heart of CAC's mission is the belief that every senior deserves the joy and comfort of a loving pet. When health issues or other challenges make it difficult for seniors to look after their animal companions, CAC steps in to help. The organization works tirelessly to find temporary or permanent foster and adoptive homes for these pets, providing a seamless transition and peace of mind for the owners.

In addition to their pet rehoming services, CAC operates the "Paw Pantry" - a program that supplies dog and cat food to local food banks across Brevard County. This essential resource helps ensure that economically vulnerable residents can continue providing for their four-legged family members.

The organization relies entirely on community support and donations to fund its vital work. Selling their now famous homemade caramel corn and hand sewn pet bandanas, while accepting direct contributions through their website, CAC invites the public to get involved and help make a difference in the lives of local seniors and their pets.

One heartwarming story that exemplifies CAC's impact is that of Kalie and Dee Gabiger. When Kalie's owner sadly passed away, CAC was entrusted to find her a new home. Dee, who had recently lost her own beloved dog named Callie, welcomed Kalie into her life as a foster. The similarities in their names felt like a sign, and the two quickly formed an unbreakable bond. Today, Kalie has found her forever home with Dee, where they continue to heal and find comfort in each other's companionship.



By providing essential services, fostering connections, and rallying community support, the organization is ensuring that the elderly in Brevard County never have to face the heartbreak of losing their beloved animal friends. To learn more, visit their website at [companionanimalcarebcfl.org](https://www.companionanimalcarebcfl.org). **CAC is an approved I.R.S. 501(c)3 tax exempt nonprofit:**

<https://www.companionanimalcarebcfl.org/donate>

# REMEMBER TO VOTE!

## ANNUAL ELECTION FOR 2025 BOARD OF DIRECTORS



There are openings for 5 Directors. Election will be held **Monday, December 9 – Friday, December 13, 2024**. Ballots can be picked up at the Front Desk.



### CANDIDATES FOR DIRECTOR

#### Karen Bostwick



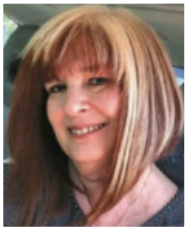
- WPSC – Bingo Volunteer
- Managed several businesses for 25 years
- Involved in Animal Rescue

#### Lori Ann Ebbensgard



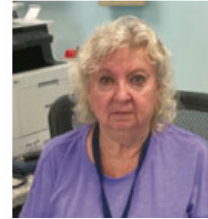
- WPSC – Bingo Volunteer & Caller
- Retired with 30 years federal government experience, incl. cost technician, budget analyst and deputy program manager
- Substitute Teacher at Sherwood Elementary

#### Celeste Garcia



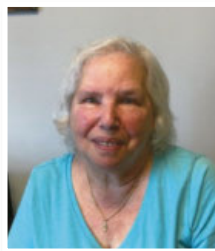
- WPSC – Current Director, Front Desk & Travel Volunteer
- 46 years of Customer Service with British Airways
- 6 years with Guest Services, Carnival Cruise Lines

#### Sharon Sneary



- WPSC – Front Desk Volunteer
- 25 years as a social worker in long term care
- 5 years as Little League board member

#### Janet Smith



- WPSC – Current Director & Travel Volunteer
- 23+ years Customer Service at Walmart
- Owned specialty advertising business for 15 years
- Founding member of the space coast advertising federation

#### Diane Weinzierl



- WPSC – Current President since 2019 & 8 years as Bingo volunteer
- Past Secretary for Pineda Crossings HOA
- 30+ years of experience in computers, marketing & event planning



The WPSC Travel Office is OPEN Monday—Friday, 9:00 am—1:00 pm  
For more information and reservations, please call Wickham Park Travel at 321-425-5530.

## Mount Dora Christmas

**Date:** December 6, 2024

**Cost:** \$69 PP

**Time:** Leaves WPSC at 2:00 pm / Returns at 10:30 pm

Celebrate the 2024 holidays again! The backdrop of over two million sparkling lights in the beautiful downtown Mount Dora. Visit the Mount Dora Christmas Village for an old fashioned country Christmas. The streets come alive as they are transformed into a Christmas village.

## St. Augustine's Nights of Lights

**Date:** December 11, 2024

**Cost:** \$75 PP

**Time:** Leaves WPSC at 12:30 pm / Returns at 10:00 pm

Depart Wickham Park in a 50-seat motorcade coach arriving in St. Augustine at approximately 1:00 pm. Enjoy free time for shopping and dining in the historic town. Then meet at Visitors Center for 30-minute trolley ride through Christmas Lights.

2025

## The Bikinis—A Musical Beach Party

**Date:** January 30, 2025

**Cost:** \$189 PP

**Time:** Leaves WPSC at 10:30 am / Returns at 5:30 pm

Everyone's favorite girl group from the 60s is back together again after 20 years and they're bringing back the sun, fun and all the great songs they sang down on the boardwalk in 1964. Includes Lunch.

## LIPS

**Date:** February 9, 2025

**Cost:** \$145 PP

**Time:** Leaves WPSC at 11:00 am / Returns at 6:30 pm

Outrageous fun every Sunday afternoon. Join the ladies of Lips for the Ultimate Drag Brunch and a spectacular show. Includes unlimited Mimosas.

## Sleuths Mystery Dinner Show

**Date:** March 16, 2025

**Cost:** \$169 PP

**Time:** Leaves WPSC at 3:30 pm / Returns at 9:30 pm

Join us for a comedy mystery show where you become the detective and solve the crime! You'll be treated to a hilarious 45-minute comedy mystery where all the clues are

presented and you help solve the crime. Enjoy a delicious dinner as you formulate insightful (and not so insightful) questions for the live interrogation. It's improvisational comedy that will have you in side-splitting laughter! Fun prizes will be awarded to the successful Sleuths!

## Titanic Tour & Dinner Gala

**Date:** March 22, 2025

**Cost:** \$169 PP (No Refunds)

**Time:** Leaves WPSC at 3:00 pm / Returns at 10:30 pm

The Titanic First Class Dinner Gala includes a Captain's cocktail party, a tour of the amazing Titanic: The Artifact Exhibition, a first-class dinner, and reenactments of the night of April 14, 1912. When you visit the Exhibition, you embark on a journey back in time to April 1912, when the ship embarked on its maiden voyage! You receive a replica boarding pass, assume the role of a passenger, and follow a chronological journey through life on the Titanic. The Exhibition features more than 300 artifacts and historical items as well as full-scale room recreation.

## New Orleans

**Date:** March 31-April 5, 2025 (6 Days / 5 Nights)

**Cost:** \$778 Double / \$1,008 Single Occup. (Limit 5)

\$72 PP Insurance (Optional)

\$75 Due Upon Signing

Final Payment Due 1/23/2025

**Time:** Leaves WPSC at 8 am, then Buc-ee's at  
200 World Commerce Parkway  
Saint Augustine, FL

Incredible price includes:

- Motorcoach Transportation
- 5 nights lodging including 3 consecutive nights in the New Orleans area
- 8 Meals: 5 Breakfasts and 3 Dinners
- Guided Tour of New Orleans
- Admission to the National World War II Museum
- Guided Tour of a Louisiana Plantation
- Admission to Mardi Gras World
- Relaxing Riverboat Cruise on the Mississippi River
- Enjoy Historic New Orleans French Quarter, French Marketplace and visit the Nearby Casinos that are within walking distance

## Pirates Dinner Adventure

**Date:** June 22, 2025

**Cost:** \$189 PP

**Time:** Leaves WPSC at 4:00 pm / Returns at 10:00 pm

When you set sail with the crew at Pirates Dinner Adventure, you have front-row seats to an epic, swashbuckling adventure that unfolds before your very eyes! But no show is complete without an audience, and at Pirates Dinner Adventure, our audience plays a special role in each performance. Every night, children, adults, and pirates of all ages have a chance to come on stage and take part in the action. Everyone is invited to cheer and sing along as our pirates fight and swoop through the air; accompanied by cannon blasts, pyrotechnics, and plenty of laughs. It's the world's largest interactive dinner show!



WPSC Group at Blue Lagoon Iceland

### WPSC TRAVEL GIFT CERTIFICATE

Date Issued: \_\_\_\_\_ Voucher # \_\_\_\_\_

This certificate is non transferable and can only be used for trips sponsored by Wickham Park Senior Center Travel. Please present to the Travel Office when reserving one of our trips. Expires one year from issue date.

Signature: \_\_\_\_\_

VOUCHER

\$25

**Travel Gift Certificates are NOW AVAILABLE**  
in our Travel Office in Increments of \$5 to \$100!

Great gift for birthdays, holidays, weddings and more. Membership is not required for Travel. Check out all of our upcoming trips on our website: <https://bcwpsc.org/travel>



**Kathy Sorrell**  
Field Sales Agent  
Licensed Insurance Agent

### The Auto Club Group

4100 North Wickham Rd., Ste 101  
Melbourne, FL 32935  
321-775-4705 Office  
321-427-0438 Mobile  
ksorrell@acg.aaa.com

Insurance



## WE APPRECIATE OUR ADVERTISERS!

They allow us to print  
this bulletin. Thank you!

## IF YOU LIVE ALONE

**MDMedAlert!™**  
At HOME and AWAY!

✓ Ambulance ✓ Police ✓ Family  
"STAY SAFE in the HOME YOU LOVE!"



**800.809.3570**

md-medalert.com

STARTING AT  
**\$19<sup>95</sup>**  
/mo.



## ADT-Monitored Home Security

Get 24-Hour Protection  
From a Name You Can Trust

- Burglary
- Fire Safety
- Flood Detection
- Carbon Monoxide



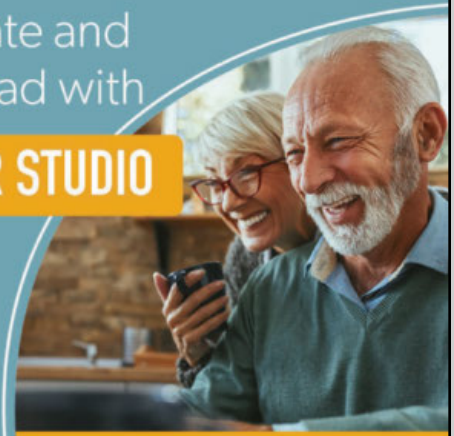
SafeStreets

**833-287-3502**

## Place Your Ad Here and Support our Community!

Instantly create and  
purchase an ad with

**AD CREATOR STUDIO**



[lpicommunities.com/adcreator](http://lpicommunities.com/adcreator)



For ad info. call 1-800-477-4574 • [www.lpicommunities.com](http://www.lpicommunities.com)

16-0351



# CALENDAR OF EVENTS

## DECEMBER 2024

**DUE TO THE WPSC HOLIDAY SHUTDOWN SCHEDULE FOR DECEMBER,  
ALL CLASSES WILL BE CLOSED TUESDAY THROUGH THURSDAY, DECEMBER 24, 25 & 26.**

ACTIVITY	SCHEDULE FOR DECEMBER	NOTES
Bingo	Tuesdays & Fridays @ 11:15A—2:00P DOORS OPEN AT 10:00A	<b>NO BINGO TUESDAY, DEC. 24</b>
Bob Ross Style Beginners Oil Painting with Hobo Bob (CRI)	3rd Thursday ( <b>December 19</b> ) @ 1:00—5:00P Sign-up Sheet at Front Desk—Limit 6 People per Class	
Bones and Balance	Mondays @ 10:00—11:00A; Register @ 9:45A	
Bridge: Beginner Class	For Virtual Classes please see our website at <a href="http://www.bcwpsc.org">www.bcwpsc.org</a> and click “Bridge” icon	
Chat	Fridays @ 9:30—11:00A	MEETS VIRTUALLY
Duplicate	On-Site Games: Mon., Wed., & Sat. @ 12:00—3:30P On-site Class: Wednesdays @ 11:00A—Noon Virtual Classes: Thursdays @ 12:15P on the BBO platform	Starting Nov. 2 On-Site Games 12:00-3:30 pm
Party Bridge	Wednesdays @ 12:30-4:00P	
Rogue	Tuesdays @ 12:15—4:00P	
Rubber	Thursdays @ 1:00-4:00P & Saturdays @ 12:30-3:30P	
Bunco	1st & 3rd Thursdays ( <b>December 5 &amp; 19</b> ) @ 1:00—4:00P	
Chair Yoga	Tuesdays @ 3:00—4:00P	
Chefs for Seniors	Next Class February, <b>TBD</b> @ 11:00A—12:30P Sign-up Sheet at Front Desk	
Color Pencil Portrait for Beginners	Wednesdays @ 9:30—11:00A	
Cornhole Tournaments	<b>December 8 &amp; 22 @ 1:30P / Set-up &amp; Practice @ 12:30P</b>	
Euchre	<b>Last day Wednesday, December 11 @ 6:00—9:00P</b>	<b>RESUMES JAN. 8</b>
<b>Fusion Glass Workshops</b>	<b>January 11, 2025 @ Noon—3:00P</b> <b>Must Pay in Advance</b>	<b>NEW WORKSHOP</b>
Hand & Foot	Mondays & Fridays @ 8:45A—Noon	
Jazzercise Lo	Mondays, Wednesdays & Saturdays @ 8:30—9:30A Fridays @ 8:30—9:15A	
Line Dancing	Tuesdays @ 4:15—5:30P	
Mahjong: American Chinese	Mondays @ Noon—3:30P / Thursdays @ 9:00A—Noon Wednesdays @ 1:00—4:00P	
Pinochle	Mondays & Fridays @ 12:30—4:30P	
Poker: Dealers Choice Friendly	Tuesdays & Fridays @ 11:30A—4:00P Mondays @ 1:00—4:00P	
Pool (Billiards)	Monday thru Friday @ 8:30A—4:30P	
QiGong-TaiChi	Mondays, Wednesdays & Fridays @ 8:30—9:30A	
Rummikub	Wednesdays @ 1:00-4:00P	
Senior Law	4th Friday of the Month @ 2:00—4:00P Sign-up Sheet at Front Desk	<b>NO SEMINARS IN DECEMBER</b>
Senior Stitchers	Thursdays @ 10:00A—Noon in Room 117 Sign-up Sheet at Front Desk	
SHINE	Tuesdays @ 9:00A—Noon	
Strength / Flexibility	Thursdays @ 9:30—10:30A	
Shuffleboard: Open Play	Thursdays @ 6:00P—8:30P; Saturdays @ 9:00A—Noon	
Tango Dance Class	Fridays @ 2:30—4:30P	
Technical Training & Education Class with Alison	3rd Friday ( <b>December 20</b> ) @ 2:30—4:30P	<b>ON COMPUTERS &amp; CELL PHONES</b>

Program details and times are subject to change. Please check the daily schedule at the Front Desk for the latest information.

**NEW UPDATES**





**TUESDAY & FRIDAY—Open to the Public!**  
**Doors Open @ 10:00 am**  
**NO BINGO TUESDAY, DECEMBER 24**

**Cards Sold @ 10:30 am – 11:15 am**



## Early Bird Starts @ 11:15 am

Join us and play 29 games including Early-Bird, 50/50, Winner-Take-All and Progressive games. Minimum package starts at \$6. Bingo payouts adjusted based on attendance. Kitchen open from 10:00 am to 11:30 am. For more information, contact **Brenda Clarson** at 321-258-8837.

## Bones & Balance

**Mondays @ 10:00—11:00 am**

**Cost: \$5.00 Members / \$7.00 Non-Members**

Start your week with healthy aging exercise. Chairs, weights and exercise bands will be used to improve your core strength, posture and balance. All major muscles will get a workout. Certified personal trainer and certified group fitness instructor with 29 years of experience at Pro Health/Health First. Please wear comfortable shoes! For more information, contact **Marcia Luhn** at 321-543-6358.



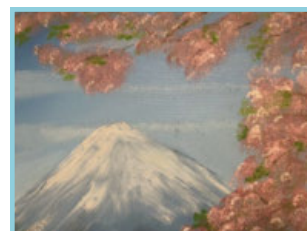
## Bob Ross Style Beginners Oil Painting with Hobo Bob (CRI)

**3rd Thursday: December 19 @ 1:00—5:00 pm**

**Cost: \$40.00 PP (Inc. All Supplies & WPSC Costs)**

Come join us for a lot of fun!! Paint a beautiful landscape painting with us. Classes will be held on the third Thursday of each month; an overflow class will be held on the fourth Thursday of the month if there is enough interest. Please call the Center 321-425-5533 or come into the front desk and sign up.

For December, we'll be painting a beautiful landscape scene with **Mount Fuji, Japan**. This painting is good for beginners, and you should be quite pleased with your finished painting. This painting will bring out the inner artist you may not even know you have.



All supplies, brushes, canvas, and aprons are provided, and you'll walk away with a wonderful finished, unframed oil painting that you will be quite proud of. Remember to wear your painting clothes. The class is small, just six participants, so Hobo Bob (CRI) has plenty of time to work with you as you paint your masterpiece.

## Duplicate Bridge

**On-site Games: Mon., Wed. & Sat. @ 12:00—3:30P**

**Cost: \$7.00 Members / \$9.00 Non-Members**

### CLASSES:

**On-site Class: Wed. @ 11:00A—Noon. Free to those playing Bridge after class—\$5.00 if not playing.**

**Online Virtual Classes: Thursdays @ 12:15P on the BBO platform / Online classes \$5.00**

Duplicate bridge classes have resumed on-site Monday, Wednesday and Saturday. Virtual online classes are also available. For the online schedule, please check out the latest on the website under the Bridge tab. Contact **Pam Page** at 321-537-0907 or [pam.page@bellsouth.net](mailto:pam.page@bellsouth.net) for bridge-related questions.

## Party Bridge

**Wednesdays @ 12:30—4:00 pm**

**Cost: \$5.00 Members / \$7.00 Non-Members**

Please contact **Tom Sanders** at 321-960-1894 prior to coming to this bridge for the first time.



## Rogue Bridge

Tuesdays @ 12:15—4:00 pm

Cost: \$1.00 Members / \$3.00 Non-Members

Contact **Patricia Rosenthal** at 321-626-5419.

## Rubber Bridge

Thurs. @ 1:00—4:00 pm & Sat. @ 12:30—3:30 pm

Cost: \$2.00 Members / \$4.00 Non-Members

Come on out for an afternoon of enjoyment at the bridge table. The Thursday point of contact is **Janet Walker** at 321-242-3173 and the Saturday point of contact is **Gayle Schanck** at 541-821-7070.

## Bunco

1st & 3rd Thursday, **December 5 & 19** @ 1:00—4:00 pm

Cost: \$6.00 Members / \$8.00 Non-Members

Please join us every 1st and 3rd Thursday of the month for Bunco and arrive by 12:45 pm. Don't forget to bring your current membership card. Bunco ends about 3-3:30 pm. Please contact **Linda** at 321-549-9893 for more details and reservations (for set-up purposes). See you there for this fun activity. All you have to know is how to throw three dice.

## Chair Yoga

Tuesdays @ 3:00—4:00 pm/Sign-in @ 2:45 pm

Cost: \$1.00 Members / \$3.00 Non-Members

This class is designed to help with overall wellbeing for the body and mind. Stretches and movements that will help increase mobility, flexibility, strength and balance. A focus on posture and breathing helps calm the mind, helps reduce stress and increase oxygen flow. Contact **Shelly Anderson** at 321-626-1969.

## Chef for Seniors

Classes @ 11:00 am—12:30 pm

Cost: \$6.00 Members / \$8.00 Non-Members

- Next Class: February, TBD

Join **Chef Jillian** for a Cooking For Seniors Class. Each Class includes an interactive cooking demonstration, free recipes, cooking tips and food tasting. Please sign up at front desk to reserve your spot.

**All proceeds are donated by Chef Jillian to The Children's Hunger Project, Brevard County's Backpack Program.**

## Cornhole Tournaments

Sunday, **December 8 & 22** @ 1:30 pm

Setup & Practice Starting @ 12:30 pm

Cost: \$2.00 Members / \$4.00 Non-Members  
(Annual Membership for 50+ is \$20)

Cornhole is welcome to all ages! Cornhole Tournaments will be held indoors at the WPSC every 2nd & 4th Sundays (excl. conflict with holidays). Don't forget to scan your membership card at the front desk. Everyone needs to be checked in by 1:25 pm to play in tournament. Unless there is an emergency, you are expected to stay until you are eliminated.

**I would like to have a Christmas pot luck on Dec. 8th for all who can come. Please bring a small dish to share and don't forget to wear your ugliest Christmas shirt.**

### November 10 Tournament (16 Players):

In the near future, we plan on holding a tournament with a Buy-In of \$10. This will pay up to 3 places (depending on turn-out).



1st Place: Jay & Kathy C.



2nd Place: Mike & Richard

### Cornhole Rules for Senior Center:

- Age 50 to 69: 27 ft. front edge to front edge; (Distance of Boards)
- Age 70 to 79: 25 ft. front edge to front edge
- Age 80 Plus/Non-Ambulatory: 23 ft. front edge to front edge
- Age 90 Plus: 21 ft. front edge to front edge

Starting Jan. 1st, 2025, there will be a new Cornhole cost (see below). This will pay 2-3 places (depending on turn-out). The decision to change the price is due to the increase of players. The pay-outs will be more respectful towards the winners. This is a blind draw tournament style, which should help even out the playing field.

- Members: \$6 (\$5 to tournament, \$1 to the Center)
- Non-Members: \$8 (\$5 to tournament, \$3 to the Center)

For any questions, please contact **Jay Koeller** at 321-794-6400 (jkoeller18@gmail.com) or **Amy Longtin** at 321-205-5161 (ajgclrt@yahoo.com).



## Color Pencil Portrait Class for Beginners

Wednesdays @ 9:30—11:00 am

Cost: \$3.00 Members / \$5.00 Non-Members

Learn how to create a beautiful drawing from your favorite photograph! Bring your own portrait photograph to copy—Size: 5x8 (or other appropriate copy size). Supplies you will need to bring: Prismacolor Color Pencils, Watercolor Paper, Eraser, Pencil Sharpener (optional). For more information contact **Ann Armerding** @ 321-541-7027.

## Euchre

Wednesdays @ 6:00—9:00 pm

**LAST CLASS IN 2024 IS DECEMBER 11  
RESUMES ON WEDNESDAY, JANUARY 8**

Cost: \$5.00 Members / \$7.00 Non-Members

**Members must scan their card when entering and non-members must sign in.**

Euchre has been a great success and as our Euchre family continues to grow, it is now common to have 5-6 tables in action. We try to promptly start by 6:00 pm which means we should be signed in no later than 5:50 pm to allow time to set up the correct 3/4 player table configuration and draw for your seats. The payout structure has been altered so more people are sharing the prize pool. That means if there are up to 30 players even eighth place takes home a piece of the purse. For more information, contact **Jay Koeller** at 321-794-6400 (jkoeller18@gmail.com).

## Fusion Glass Workshop

January 11, 2025 @ Noon—3:00P

Cost: \$70 PP (Includes All Supplies & Kiln-Firing of Projects)

- January 11: Suncatcher Chimes



Join us to explore an unique art medium that you might just get addicted to. No “artistic/creative” skills are required to make these projects out of fusible glass. Each class is designed to be fun and no stress. Each workshop has a 4 person minimum and 16 person maximum, so grab

your seats early and invite your friends to sign up too. For safety reasons, closed-toe shoes required. For questions, call or text Lauren Richeson at 310-483-3229. Classes must be reserved and paid for in advance via the website: <https://laurenricheson galleriesstore.square.site/>

## Hand & Foot Card Game

Mondays & Fridays 8:45 am—Noon / Setup @ 8:30 am

Cost: \$1.00 Members / \$3.00 Non-Members

Join this group of friendly and competitive players for a time well spent. Please contact **Beverly Morgan** at 303-458-8273 for more information.

## Jazzercise Lo

Mondays, Wednesdays & Saturdays @ 8:30-9:30 am

Fridays @ 8:30-9:15 am

Members: \$50.00/Month & Walk-ins \$10.00

Non-Members: \$79.00/Month & Walk-ins \$12.50

Join us for a fun and energized Jazzercise Lo class. Dance away those extra calories using Low Impact moves that yield MAXIMUM results! We use muscles, not momentum, to get a total body workout without the impact on your joints. For more information, contact **Ginny Parker** at 321-698-0445.

## Line Dancing

**NO CLASS ON DECEMBER 24 & 31**

**CLASS RESUMES ON JANUARY 7**

Tuesdays @ 4:15—5:30 pm

Cost: \$6.00 Members / \$8.00 Non-Members



A few student goofin' around with Sue after class

Happy Holidays from all of us having Fun in Line Dancing for Fun and Exercise. As our year comes to a close, I want to thank our tireless leadership of our beautiful Wickham Park Senior Center for providing us with such a beautiful, safe, FUN environment to join together with others our age. Every week our volunteers guide our members, answer our phones plan our activities, keep us safe! THANK YOU and Happy Holidays. Special thanks goes out to my students who follow me each week into a class of laughter and movement as we improve our balance and hopefully brighten everyone's day. I live for my extended dance family. I LOVE YOU. Blessings from my house to yours! **Sue Duncan**, Professional Instructor Choreographer for over 60 years. 321-505-0846.

## Mahjong

**American:** Mondays @ Noon—3:00 pm & Thursdays @ 9:00 am—Noon

**Cost:** \$1.00 Members / \$3.00 Non-Members

**Chinese:** Wednesdays @ 1:00—4:00 pm

**Cost:** \$5.00 Members / \$7.00 Non-Members

Mahjong is an activity that fosters friendly comradery and stirs the brain. Come join the fun! Contact **Patricia Rosenthal** at 321-626-541 (American) or **Linda Milo** at 321-506-2672 (Chinese).



## Pinochle

**Mondays & Fridays @ 12:30—4:30 pm**

**Cost:** \$1.00 Members / \$3.00 Non-Members

Contact **Bill Mueller** at 321-242-4999 (Mondays) or **Cathy Decker** at 321-432-7813 (Fridays).

## Poker (Dealers Choice)

**Tuesdays & Fridays @ 11:30 am—4:00 pm**

**Cost:** \$1.00 Members / \$3.00 Non-Members

Contact **Bill Seigel** at 813-416-0428.

## Poker (Friendly)

**Mondays @ 1:00—4:00 pm**

**Cost:** \$1.00 Members / \$3.00 Non-Members

Attention: Players Needed! Pennies Only. Call ahead to attend. Contact **Vinnie Germann** at 321-253-6155.

## Pool (Billiards)

**Monday thru Friday @ 8:30 am—4:30 pm**

**Tournaments: 2nd Wednesday of Every Month**

**Cost:** \$1.00 Members / \$3.00 Non-Members

**Plus \$ .50 per Day or \$2.00 per Week**

YE OL Pool Room 8-Ball Tournament 10/16/24 Results:

1st: Mike Spaethe 3rd: Jorge Fernandez

2nd: Jerry Bertekap 4th: Dave Reeve

Next tournament is December 11. Questions? Contact **Wally Topinko** at 321-622-4977.



**FREE**  
AD DESIGN  
with purchase  
of this space

**CALL 800-477-4574**

**SUPPORT OUR  
ADVERTISERS!**

**WE'RE HIRING!**  
AD SALES EXECUTIVES



**BE YOURSELF.  
BRING YOUR PASSION.  
WORK WITH PURPOSE.**

- Paid training
- Some travel
- Work-life balance
- Full-Time with benefits
- Serve your community



Contact us at  
[careers@4lpi.com](mailto:careers@4lpi.com) or  
[www.4lpi.com/careers](http://www.4lpi.com/careers)

**LET'S GROW YOUR BUSINESS**

**Advertise in our Newsletter!**

**CONTACT ME**  
**Rich Fernbach**

[rfernbach@lpicommunities.com](mailto:rfernbach@lpicommunities.com)

**(800) 477-4574 x3675**



## QiGong-TaiChi

Mon., Wed., & Fridays @ 8:30—9:30 am

Cost: \$5.00 Members / \$7.00 Non-Members



For over 50 years, scientists at the Institute for Aging Research, an affiliate of Harvard Medical School, have been studying what causes falls among the elderly, and how to prevent them. One of the

most promising interventions is TaiChi. It offers senior practitioners inner peace and improves balance, flexibility and mental agility. It also reduces death due to falls and injury among older adults. We focus more on the Healing Art of QiGong of TaiChi. **Laura Parsons**, Certified Instructor at 321-474-5374.

## Rummikub

Wednesdays @ 1:00—4:00 pm

Cost: \$1.00 Members / \$3.00 Non-Members

Rummikub is a tile-based game combining elements of the card game rummy and mahjong. It's an easy game to play and if you don't know how to play, our group will be happy to teach you. Come join us for a fun afternoon. Contact **Peggy Miles** at 732-688-6268.

## Senior Law

4th Friday of the Month @ 2:00—4:00P

**NO SEMINARS IN DECEMBER**

Cost: Free to All WPSC Members

The Slonim Law Firm invites you to attend a FREE seminar and question/answer session on the 4th Friday of each month at WPSC Room 117. Topics:



SLONIM LAW

- Last Will & Testament & Trusts
- Durable Power of Attorney & Healthcare Directives
- Digital Assets
- Medicaid and Asset Protection Options
- General Dementia Issues
- Guardianships
- Probate Matters
- Living Wills

Seating is limited. Please sign up at the front desk. Any questions, call the Law office at 321-757-5701.

## Senior Stitchers

Thursdays @ 10:00 am—Noon in Room 114

**NO CLASS ON DECEMBER 26**

Cost: \$1.00 Members / \$3.00 Non-Members

Would you like to learn to Knit or Crochet or do you already know how to Knit or Crochet? If so, please join us for a morning of friendship and pleasant conversation while learning new skills and stitches while helping each other to share and improve our skills. What to Bring:

- If you are already experienced, please bring a **WORK IN PROGRESS** that you'd like to work on.
- If you're a beginner, please bring some worsted yarn and some Size 8 knitting needles or a Size G crochet hook.



Please sign up at the Front Desk. For more information contact **Laurie Liguori** at 917-882-9898.

## Shuffleboard

Open Play: Sat. @ 9:00 am & Thurs. @ 6:00 pm

Cost: \$1.00 Members / \$3.00 Non-Members

For more information on learning how to play or participating in tournaments, call **Tom Winkelspecht** at 321-446-3283 or email: [tawinkii@me.com](mailto:tawinkii@me.com)

## Social Tango, Introduction to Argentine Tango

Fridays @ 2:30—4:30 pm

Monthly Cost: \$45 Members / \$48.00 Non-Members

Come out and enjoy the art of Argentine Tango, where students will learn to dance tango step-by-step. No partner is necessary as the basic techniques can be applied for the follower or the leader. Students will experience in-part the health benefits of Argentine tango including overall improved well-being, walking, posture and coordination. At only \$45.00 for four weeks of Tango, (you decide which four weeks will work for you and we can accommodate flexible travel plans of students as well). Any questions, contact **Delores or Walt** at 850-212-7963.





### Halloween Dinner/Dance Winners

50/50 – Marcie Smarsh

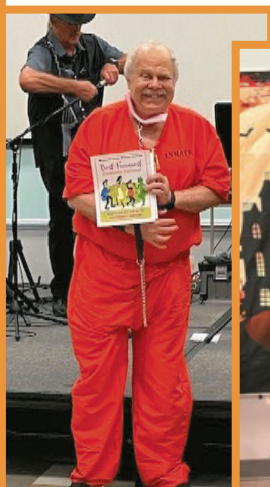
Monster Stomp Dance Contest – 1st Place – Irene Franklin

Monster Stomp Dance Contest – 2nd Place – Mike Summers

Scariest Costume – Bill Mueller

Funniest Costume – David Casper

Most Creative Costume – Coleen Barneman





## Strength/Flexibility

Thursdays @ 9:30—10:30 am

Cost: \$4.00 Members / \$6.00 Non-Members



Fitness Unlimited by Design presents a class you won't want to miss and has everyone talking! This class will introduce greater strength and flexibility that your body will love and you will love going to. It also helps with posture and alignment of the spine, helps us stay limber, agile, strong and keeps our

balance in check. We work on core, arm and leg strength. Contact **Susie Salvetti** at 321-626-0282 to see if this class is the right fit for you.

## Technical Training & Education on Computer & Cell Phone

3rd Friday of the Month, **Dec. 20** @ 2:30—4:30 pm

Cost: \$0 Members / \$3.00 Non-Members

Phone/Tablet Beginner: 2:30—3:15 pm

Phone/Tablet Interim/Advanced: 3:15—4:00 pm

Laptop computer: 4:00—4:30 pm

(iPad/ tablet questions taken during any class)

Try one or stay for all 3! Room 117 end of the hall, 18-person limit. Use the sign-up sheet on the front table or text /call **Alison** at

954-376-2444 to confirm. Exercise

your brain in a fun, interactive hour with a relevant and patient approach. For more personalized assistance, unsure of your level, or for desktop computers, don't hesitate to contact Alison.



**SUPPORT THE  
ADVERTISERS**  
that Support our  
Community!

# OUR SPONSORS

The Officers and Membership of Wickham Park Senior Center appreciate the continued support of our many Sponsors. As an all volunteer run organization, their continued financial support allows us to offer Activities and Social events for our members.

## *Diamond Level Sponsors*



## *Gold Level Sponsors*



## *Meet & Greet Sponsors*

Our monthly Meet & Greets with our sponsors have started back up on Tuesday and Friday mornings from 9—11:00 am. Each sponsor will have a table set up just outside the front door or inside the lobby to provide you with information, fun giveaways, and someone knowledgeable to answer your specific questions. Please mark your calendars and come up to meet them.

- Tuesday, December 3: Alzheimer's Foundation Joe's Place
- Tuesday, December 3: Physician Partners of America
- Friday, December 6: Kindred Hospitals ARU
- Friday, December 6: Travel Expressions
- Tuesday, December 10: Cigna Insurance
- Tuesday, December 17: Better Health Group
- Friday, December 20: United Health Care
- Friday, December 20: Rosanova Eye
- Friday, December 27: VIP America



## Welcome

### New Members in October

Adkins, Shirley	Kidd, Bob
Ahmed, Fred	Kidd, Shari
Auld, Audrey	Knaul, Marcia
Baker, Shirley	Kvasnok, Joe
Burton, Susan	Kvasnok, Susanne
Campbell-Wuelling, Teresa	Leonard, Laurie
Cardet, Janet	Louis, Nancy
Cardet, Jose	Maldonado, Edna
Cook, Karen	Maloney, John (Jack)
Cruz, Martha	Mathews, Carmen
DeMaio, Michelle	McMahan, Dale
DeMaio, Ray	McMillan, Loettie
Dull, Margi	Melin, Karen
Dull, Stacy	Michaels, Wanda
Fabiano, Deborah	Mikkelson, Michelle
Fabiano, Frank	Olesnevich, Ann
Fain, Heidi	Olesnevich, Chris
Fox, Marilyn	Orrego, Luz
Friedlander, Terri	Pettit, Jackie
Gale, Mary	Provence, Harold
Gdovin, Ruth	Reyes, Myrna
Gough, Georgia	Roubal, Roberta (Bobbie)
Guy, Lisa	Schimkus, Kim
Handford, Rosanne	Shaeffer, Kathleen
Handford, Tom	Stradford, Charmaine
Handlin, Mary	Sweeney, Ellen
Harrow, Nancy	Sweeney, Troy
Heller, Julia	Tanchin, Sr., Gordon
Heller, Michael	Tenbusch, Andrea
Holmes, Thomas	Tucker-Heins, Mary Ellen
Hull, Trude	Wainwright, Bonnie
Jarmula, Donald	White, Donna
Johns, Jan	Wimberly, Joan

### COMMENTS?

#### We value your opinion!

There's a SUGGESTION BOX in the lobby for your feedback or ideas on how we can enhance the experience at the WPSC!



## Wickham Park Senior Center Holiday Closures for 2024

To enable our volunteers to spend more time with their families during the upcoming holiday season, Wickham Park Senior Center will be closed on the following dates:

- **Christmas Holiday:**
  - Tuesday, Dec. 24, 2024 (Day before Christmas)
  - Wednesday, Dec. 25, 2024 (Christmas Day)
  - Thursday, Dec. 26, 2024 (Day after Christmas)
- **New Year's Holiday:**
  - Wednesday, January 1, 2025 (New Year's Day)

## Meet Our Staff

### Officers

President:	Diane Weinzierl
Vice President:	Gary McGuire
Secretary:	Ina Fritsch
Treasurer:	Colleen Barneman

### Directors

Celeste Garcia	Ginny Parker
Beverly Morgan	John Potanos
Janice Oppelt	Janet Smith
Pam Page	Rosann Testa

### Staff

IT Systems Admin:	John Efird
Webmaster:	Maureen Reeder
Sunshine:	JoAnn Efird
Newsletter:	Nilda Rosario

Deadline for copy submission to the newsletter is the **15th of each month**. Please email copy to:  
**news@bcwpssc.org**

## WPSC Email Addresses

DIRECTORY	EMAIL
WPSC President	president@bcwpssc.org
WPSC Secretary	secretary@bcwpssc.org
WPSC Treasurer	treasurer@bcwpssc.org
WPSC Scheduling	scheduling@bcwpssc.org
WPSC Information	info@bcwpssc.org
WPSC Webmaster	webmaster@bcwpssc.org
Travel Office	travel@bcwpssc.org
Front Desk Reception	reception@bcwpssc.org
Bridge Club	bridge@bcwpssc.org
Newsletter Editor	news@bcwpssc.org
Systems Administrator	itadmin@bcwpssc.org

**When You Have A Plan  
You Can Afford to Relax  
Helping Families With**

Estate/Life Planning  
Guardianship & Probate  
Medicaid Asset Preservation



**Slonim Law**

321.757.5701 | [Slonimlaw.com](http://Slonimlaw.com)

Code: WPSC



**Say Yes to New Adventures**

CMS Rating



**Offering:** Independent Living • Skilled Nursing Care  
Individualized Rehabilitation • Therapy Services

**321-452-1233**

TTD# 800-545-1833 ext. 359  
Language Assistance Services 562-527-5255



**COURTENAY  
SPRINGS  
VILLAGE**

1200 S Courtenay Pkwy.  
Merritt Island, FL 32952

SNF# 11070961

*Brownlie &  
Maxwell*

Funeral Service & Crematory

**(321) 723-2345**

[www.brownliemaxwell.com](http://www.brownliemaxwell.com)

1010 Palmetto Ave.  
Melbourne, FL 32901



**ELITE CARE  
PHARMACY**

A MEMBER OF  
*The Medicine  
Shopper*  
FAMILY

**Prioritize your health and let us  
TAKE CARE OF YOU!**

- ✓ Over 50 medications at discounted prices - Starting at \$2.00
- ✓ Same Day Home Delivery
- ✓ Human & Pet Medication Compounding
- ✓ Compliance Packaging - Pill Pouches
- ✓ 24/7 Emergency Prescription Fill Voicemail
- ✓ Medication Flavoring
- ... and MUCH MORE!

**CALL US TODAY!**

**321-608-4949**

Dr. Zuheily Vélez - PharmD  
Pharmacy Manager | Owner

3680 N Wickham Rd Ste C Melbourne, FL 32935  
[www.EliteRxFL.com](http://www.EliteRxFL.com)



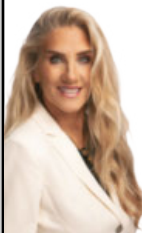
**WATERMAN  
REAL ESTATE**

**Linda Cass**

Parishioner

**321-704-5203**

[The.Cass.house@gmail.com](mailto:The.Cass.house@gmail.com)  
[lindacass.spacecoastmls.com](http://lindacass.spacecoastmls.com)



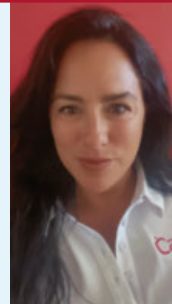
**CarePlus**  
HEALTH PLANS

**Kristine Quattrone**  
**Licensed Insurance Agent**

Brevard & Indian River County

[Kquattrone@careplus-hp.com](mailto:Kquattrone@careplus-hp.com)

**321-326-4033**



**NEVER MISS  
OUR NEWSLETTER!**

**SUBSCRIBE**

Have our newsletter  
emailed to you.



VISIT [WWW.MYCOMMUNITYONLINE.COM](http://WWW.MYCOMMUNITYONLINE.COM)



For ad info. call 1-800-477-4574 • [www.lpicommunities.com](http://www.lpicommunities.com)

16-0351