



Friendship Flyer

JANUARY 2024

2785 Leisure Way
Melbourne, FL 32935
(321) 255-4494

Monday-Friday: 8:30 am—4:30 pm

Saturday & Sunday: CLOSED

www.bcwpsc.org

2024
HAPPY NEW YEAR

President's Message



Diane Weinzierl

Happy New Year to Everyone! I hope you had a fantastic holiday season and are looking forward to a great 2024.

Last month we held our **Annual Meeting Reception** had a record number of attendees this year – 70 total (up from 50 last year). I hope more of you will think about attending next year as this is where you can learn more about what we've done at the center, as well as what's planned for the next year.

Why did we cancel the scheduled Board of Directors Election the week of December 11-15? At the annual meeting, one of the board nominees withdrew his nomination, so that left us with 6 Board of Director openings and only 6 nominees. We made a decision to go ahead and hold the election at the Annual Meeting and cancelled the scheduled election since all of the nominees were going to be elected automatically. I can't tell you who the new president will be yet because our first board meeting of the year will be on January 8 where we will elect the new officers for the year. Watch for postings on the bulletin boards after that meeting.

This year our **Annual Volunteer Event** was held at the Premiere Oaks Theatre, followed by a luncheon at the Oaks One venue next to Hemmingway's. As you know, we are 100% Volunteer operated, so this event is the one big celebration event of the year where we get to honor and thank all our volunteers who do such a wonderful job at the Center. This year we partnered again with our sponsors who were so generous to provide us with gift baskets and gift cards for our volunteers. You can find a list of our sponsors who donated on page 2, along with some fun photos of the event on page 13.

Thanks again to everyone who participated in our Angel Tree program this year in support of seniors in Brevard County. As always you opened your wallets and your hearts to go way above and beyond what was requested. This year we provided 80 gift bags that went to support senior outreach programs for the Salvation Army, Consulate Care Nursing Home and Blessed Sacrament Catholic Church. Thanks to Bev Morgan for spearheading this year's program.

Save the Date of February 9, 2024 for our next evening dinner dance. Details will be posted around the center in early January and tickets will go on sale

January 15, 2024 – so please be sure to save the date to join us.



Mission Statement

Our Mission is to provide a congenial and happy environment for seniors to enjoy activities, meet new friends, and attend educational programs. Furthermore, to provide a resource for obtaining assistance and guidance in times of need.

"There are no strangers here, only friends you have yet to meet!"

The WPSC Board of Directors meetings are held on the 2nd Monday of each month at 9:30 am. The next meeting will be **January 8 at 9:30 am in Room 117**. All WPSC members are welcome to attend.



February 9, 2024 will be the next Friday Night Dinner & Dance.

Newly Elected Board of Directors

The new Board of Directors will be sworn in at the January 8, 2024 Board Meeting.

A complete list of the 2024 Board can be found on page 15 of the newsletter.

thank
you!

Thank you to our **Sponsors and Benefactors** for donating gift baskets to this year's Volunteers Holiday Event!

- Alzheimer's Foundation
- American Home Care Services
- Colleen Barneman
- Cigna
- Devoted Health Plans
- Harbor City Hearing
- Health First
- Gary McGuire
- Pam Page
- Ginny Parker
- Rosanova Eye
- Selling on the Space Coast
- Slonim Law
- The Terrace
- Travel Expressions
- United Healthcare
- VIP America
- VITAS
- Wellcare
- WPSC Bingo
- WPSC Travel



Wickham Park Senior Center INC on Facebook

We have finally secured our own Facebook page! As some of you may be aware, we have been struggling to find the administrators of other Facebook pages representing WPSC and have not been successful. Also, we have no way to have them removed.



If you do you use Facebook, please do a search for **Wickham Park Senior Center INC** and join our page!

Looking for a Worthy Charitable Donation Organization?

Wickham Park Senior Center is a 501(c)3 charitable organization and as such is eligible to receive charitable donations. We would like to thank the following people for their generous donations to WPCS in FY2023.



- Kathleen & Andrew Cole
- Nancy Colwell
- Lenora Kippeny
- Lawrence Nicola – For the Duplicate Bridge Club in memory of Jacque Nicola
- Jenny & John Potanos
- Gayle & Stephen Schanck

In Memory of John Cerovich:

- Barbara Cerovich
- Thomas Bonarrigo, Jr.
- Beverly & Ed Burkey
- Harriet Roderick
- Edward & Patricia Gulakowski

If you find you have extra funds in your charitable donations bucket anytime during the year, please consider donating to WPSC.

Blood Pressure Checks



Sea Pines will be conducting blood pressure checks at the Wickham Park Senior Center every 2nd

Friday of the month (**January 12**) at 9:00-11:00 am.

Volunteer Needed!

The WPSC is searching for someone who would enjoy teaching knitting and/or crochet at the center. Interested? Please contact Gary McGuire at email scheduling@bcwpsc.org
Thank you for your consideration.



Human's Best Friend

Gale and Jay Sellers look forward to getting some love from Romeo when they come in for their **Strength and Flexibility** class on Thursdays. He can't wait for them to walk in and is very excited to see them. Romeo has even stayed with them for a few days while his "mom" was on vacation.



WPSC Sunshine Committee



Do you know a WPSC member who is sick, experienced a family member loss, or needs some cheer or support? If so, please let our Sunshine Committee know by dropping off your request in the mailbox labeled "Sunshine Committee" (located near the Billiards Room behind the front desk).

Please be sure to include the person's full name and any information you might have so we can find them in our database, as well as why you think they qualify. Also, please be sure to include your name and telephone number so we can reach you if we have any questions.

WPSC Offers Free Lifetime Membership to Anyone Age 95 & Above

If you are age 95 or older, you are now entitled to **FREE Lifetime Membership** to Wickham Park Senior Center. Just stop by the Front Reception Desk, show them your ID and they will get your membership updated.



Also, if you're age 95 or older, you can receive a **FREE** bingo package to play bingo at WPSC. Show them your lifetime membership card and join us to play Bingo.

Bunco Party & Luncheon

The GFWC Melbourne Woman's Club will be holding their 20th Annual Bunco Party and Luncheon at Wickham Park Senior Center on **February 4, 2024** from 1:00-4:00 pm. Cost is \$25 and includes a light lunch. For tickets and more information, please contact **Pat Rosenthal at 321-626-5419**.



Need to Schedule an Appointment with SHINE?

The WPSC SHINE Group is available Tuesdays and Thursdays from 9:00 am to Noon in Room 104. Anyone interested can call 407-514-1800 to schedule an appointment. No fee required!

Wickham Park Senior Center is not equipped, nor intended to be a senior care facility. WPSC activities are geared toward independent adults who are able to manage their own care, decisioning making and safety. WPSC's insurance prohibits, and WPSC cannot be responsible for, the provision of physical assistance to individuals on the premises. If an adult companion is needed, the companion may participate in the activity if they desire, regardless of age, and must pay all fees associated with the activity. WPSC reserves the right to prevent persons from being on premises if the WPSC leadership believes that person would cause harm to themselves or others.

The WPSC Travel Office is OPEN Monday—Friday, 9:00 am—1:00 pm
For more information and reservations, please call Wickham Park Travel at 321-425-5530.

Jersey Boys at the Vero Beach Riverside Theatre

Date: January 11, 2024
Cost: \$179 PP incl. Lunch at Vincent's Italian Restaurant
(NO REFUNDS / REPLACEMENTS ONLY)
Time: 10:30 am—5:30 pm

Who knew four guys from New Jersey would turn the world upside down? With a unique sound that nobody had heard, but the radio couldn't get enough of, Jersey Boys is the Tony Award®-winning true-life musical of Frankie Valli and The Four Seasons. While their harmonies were perfect on stage, their offstage relationships were a different story.

Only
4 Tickets
Available!

Mission Inn, Yalaha Bakery & Mt. Dora

Date: January 24, 2024
Cost: \$129 PP **(NO REFUNDS AFTER JAN. 14, 2024)**
Time: 9:00 am—5:30 pm

Yalaha Baker is a lovely gem of a German bakery, famous for its yummy, unique baked goods, delicious breads, and cute location. They feature a vast array of baked goods. From Yalaha, we're off to Howey-in-the-Hills for a relaxing and luscious lunch buffet at the beautiful Mission Inn Resort and Golf Club. After our delightful and satisfying lunch, we move on to quaint Mt. Dora for free time to browse, shop, or search for antiques. A wonderful, relaxing day of fun and food!

Capone's Dinner & Show

Date: February 3, 2024
Cost: \$149 PP
Time: Leaving 4:00 pm—Returning 10:45 pm

Knock three times, give the secret password and discover the mysterious world of 1931 gangland Chicago. Our entertaining, hysterical, all-new show delivers loads of laughs, gangster action, audience interaction and toe-tapping musical productions. Fun for all ages ... It's a blast! Show filled with singing, dancing, stand-up comedy, and a chance to win prizes during the gangster shoot out!

BE PART OF THE "OUTFIT": Have more fun than ever by "dressing the part."

Price includes: Round-trip Transportation; Delicious Buffet Dinner including meat carving station and fresh salad bar; Unlimited Beverages (no extra charge for alcoholic drinks); and Delicious Dessert.

Only
20 Tickets
Available!

Breaking Up Is Hard To Do at the Winter Park Playhouse

Date: February 15, 2024
Cost: \$159 PP incl. Lunch at the Cheesecake Factory
(NO REFUNDS AFTER FEB. 1, 2024)
Time: Leave WPSC at 10:30 am / Returning at 5:30 pm

This nostalgic musical comedy celebrates the timeless songwriting magic of the legendary **Neil Sedaka!** Set at a Catskills resort in 1960, this humorous and heartwarming musical follows two friends from Brooklyn in search of good times and romance over one wild Labor Day weekend. Featuring 20 of Sedaka's most popular songs including "Laughter in the Rain," "Where the Boys Are," "Sweet Sixteen," "Calendar Girl," "Love Will Keep Us Together," and the chart-topping title song!

Seminole Hard Rock Hotel & Casino Hollywood, FL

Date: March 14, 2024
Cost: \$65 PP
Time: Leave WPSC at 8:30 am / Returning at 5:30 pm

Seminole Hard Rock Hotel & Casino Hollywood's gaming area offers guests a selection of 2,700 of the most popular Slots, nearly 200 Table Games and a new 45-table Poker Room. The High Limit Slots room offers an array of favorite titles and the newest Slots in the industry. Slot denominations range from one cent to \$5 on the general gaming floor, while the High Limit Slots room offers \$1 to \$1,000 bets. A Non-Smoking Slots area is conveniently located near the Winners Way Garage. Our Table Games selection features live dealers, and guests can choose from popular games such as blackjack, mini-baccarat, three-card poker, Ultimate Texas Hold 'em®, Spanish 21, let it ride and more.

ON YOUR FEET!

The Story of Emilio & Gloria Estefan at the Vero Beach Riverside Theatre

Date: April 18, 2024
Cost: \$179 PP incl. Lunch at Vincent's Italian Restaurant
(NO REFUNDS AFTER APR. 1, 2024)
Time: 10:30 am—5:30 pm

Based on the lives and music of 26-time Grammy Award-winning husband-and-wife team, Emilio and Gloria Estefan, On Your Feet! is a high-energy celebration of the songs that got the world dancing to the rhythm. From humble beginnings in Cuba and exile in Miami, Emilio and

Only
8 Tickets
Available!

**WPSC Travel will happy to put your name on our "WAIT LIST" for any SOLD OUT trips.
Just call us at 321-425-5530.**

Gloria's passion for music helped them overcome overwhelming odds and personal tragedies. Gloria Estefan is among the most successful crossover artists ever and On Your Feet! showcases over 20 of her biggest hits including: "Conga," "1-2-3," "Anything for You," and "Get on Your Feet." Music & Lyrics by Emilio Estefan & Gloria Estefan.

steep Lookout Mountain and Rock City, featuring sweeping views, sandstone formations and gardens. The Blue Ridge Scenic Railway takes riders on a four-hour, 26 mile roundtrip journey deep in the mountains along the Toccoa River through the countryside to the quaint sister towns of McCaysville, Georgia and Copperhill, Tennessee. There's a world of outdoor adventure and world-class attractions waiting for you in Chattanooga.

Chattanooga Choo Choo, Tennessee

Date: September 2-5, 2024

Cost: \$1,099 Double / \$1,399 Single

Insurance: \$92 PP (Payable at Time of Reservation)

If you love trains, this tour's for you! Tucked between the mountains of Southeast Tennessee, along the beautiful Tennessee River Chattanooga is one of America's most breathtaking cities and has been voted as one of the "Top 45 Places to go" in the World. The Incline Railway scales

Price includes:

- 3 Nights Lodging and Breakfasts
- 3 Dinners, including the Southern Belle Dinner Cruise
- 3 Train Rides: The Missionary Ridge Local, Lookout Mountain Incline Railway, Blue Ridge Scenic Railway
- Rock City Gardens
- Gift for All
- Luggage Handling, All Taxes, Meal & Driver Gratuities, and Bus Transportation

WPSC TRAVEL GIFT CERTIFICATE

Date Issued: _____ Voucher # _____

This certificate is non transferable and can only be used for trips sponsored by Wickham Park Senior Center Travel. Please present to the Travel Office when reserving one of our trips. Expires one year from issue date.

Signature: _____



Travel Gift Certificates are NOW AVAILABLE in our Travel Office in Increments of \$5 to \$100!

Great gift for birthdays, holidays, weddings and more. Membership is not required for Travel. Check out all of our upcoming trips on our website: <https://bcwpsc.org/travel>

Reflecting life, love and compassion

St. Francis REFLECTIONS™ Lifestage Care

- Hospice
- Palliative Care
- Grief Support

321-269-4240
ReflectionsLSC.org



Kathy Sorrell
Field Sales Agent
Licensed Insurance Agent

The Auto Club Group

4100 North Wickham Rd., Ste 101
Melbourne, FL 32935
321-775-4705 Office
321-427-0438 Mobile
ksorrell@acg.aaa.com

Insurance



ADT-Monitored Home Security

Get 24-Hour Protection From a Name You Can Trust

- Burglary
- Flood Detection
- Fire Safety
- Carbon Monoxide



ADT Authorized Provider

SafeStreets

833-287-3502

Place Your Ad Here and Support our Community!

Instantly create and purchase an ad with

AD CREATOR STUDIO



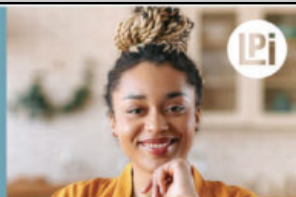
lpicommunities.com/adcreator

WE'RE HIRING!

AD SALES EXECUTIVES

BE YOURSELF.
BRING YOUR PASSION.
WORK WITH PURPOSE.

- Paid training
- Some travel
- Work-life balance
- Full-Time with benefits
- Serve your community



Contact us at
careers@4lpi.com or
www.4lpi.com/careers



For ad info. call 1-800-477-4574 • www.lpicommunities.com

16-0351

CALENDAR OF EVENTS

JANUARY 2024

ACTIVITY	SCHEDULE FOR JANUARY	NOTES
Bingo	Tuesdays & Fridays @ 11:15A—2:00P DOORS OPEN AT 10:00A	
Blood Pressure Checks	2nd Friday (January 12) @ 9:00—11:00A	
Bob Ross Style Beginners Oil Painting with Hobo Bob	3rd & 4th Thursdays (January 18 & 25) @ 1:00—5:00P Sign up Sheet at Front Desk—Limit 6 People per Class	
Bones and Balance	Mondays @ 10:00—11:00A; Register @ 9:45A	
Bridge: Beginner Class	Saturdays @ 11:00A with Pam Page For Virtual Classes please see our website at www.bcwpsc.org and click “Bridge” icon	
Chat	Fridays @ 9:30—11:00A	MEETS VIRTUALLY
Duplicate	On-Site Classes on Mon., Wed., & Sat. @ 12:30—4:00P Virtual Classes Thursdays @ 12:15P on the BBO platform	
Party Bridge	Wednesdays @ 12:30-4:00P	
Rogue	Tuesdays @ 12:15—4:00P	
Rubber	Thursdays @ 1:00-4:00P & Saturdays @ 12:30-3:30P	
Bunco	1st & 3rd Thursdays (January 4 & 18) @ 1:00—4:00P	
Chair Yoga	Tuesdays @ 3:00—4:00P	
Chefs for Seniors	Next Class TBD @ 11:00A—12:30P Sign-up Sheet at Front Desk	
Chess	Thursdays @ 1:00—3:00P	
Color Pencil Portrait for Beginners	Wednesdays @ 9:30—11:00A	
Cornhole Tournaments	January 14 & 28 @ 2:00P—Set-up & Practice @ 1:00P	
Euchre	Wednesdays @ 6:00—9:00P	
Hand & Foot	Mondays & Fridays @ 8:45A—Noon	
Jazzercise Lo	Mondays, Wednesdays & Saturdays @ 8:30—9:30A Fridays @ 8:30—9:15A	
Line Dancing	Tuesdays @ 4:15—5:30P	RESUMES JANUARY 9
Mahjong: American	Mondays @ Noon—3:30P Thursdays @ 9:00A—Noon	
Chinese	Wednesdays @ 1:00—4:00P	
Pinochle	Mondays & Fridays @ 12:30—4:30P	
Poker: Dealers Choice	Tuesdays & Fridays @ 11:30A—4:00P	
Friendly	Mondays @ 1:00—4:00P	
Pool (Billiards)	Monday thru Friday @ 8:30A—4:30P	
QiGong-TaiChi	Mondays, Wednesdays & Fridays @ 8:30—9:30A	
Rummikub	Wednesdays @ 1:00-4:00P	
Senior Law	4th Friday of the Month (January 26) @ 2:00—4:00P Sign up Sheet at Front Desk	
SHINE	Tuesdays & Thursdays @ 9:00A—Noon	
Strength / Flexibility	Thursdays @ 9:30—10:30A	
Shuffleboard: Open Play	Saturdays @ 9:00A—Noon	
Tango Dance Class—NEW!	Fridays @ 2:30—4:30P	
Technical Training & Education Class	3rd Friday (January 19) @ 2:30-3:30pm	ON COMPUTERS & CELL PHONES

Program details and times are subject to change. Please check the daily schedule at the Front Desk for the latest information.

NEW UPDATES

BINGO!

TUESDAY & FRIDAY—Open to the Public!
Doors Open @ 10:00 am



Cards Sold @ 10:30 am – 11:30 am
Early Bird Starts @ 11:15 am

Join us and play 29 games including Early-Bird, 50/50, Winner-Take-All and Progressive games. Minimum package starts at \$6. Bingo payouts adjusted based on attendance. Kitchen open from 10:00 am to 11:30 am. For more info, contact **Brenda Clarson** at 321-258-8837.

Bones & Balance

Mondays @ 10:00—11:00 am
Cost: \$5.00 Members / \$7.00 Non-Members

Start your week with healthy aging exercise. Chairs, weights and exercise bands will be used to improve your core strength, posture and balance. All major muscles will get a workout. Certified personal trainer and certified group fitness instructor with 29 years of experience at Pro Health/Health First. Please wear comfortable shoes! For more information, contact **Marcia Luhn** at 321-543-6358.

Duplicate Bridge

On-site Classes: Mon., Wed. & Sat. @ 12:30P
Online Classes: Thurs. @ 12:15 pm on the BBO platform
Cost: On-site classes \$6.00 / Online classes \$5.00

Duplicate bridge classes have resumed on-site Monday, Wednesday and Saturday. Virtual online classes are also available. For the online schedule, please check out the latest on the website under the Bridge tab. Contact **Pam Page** at 321-537-0907 or pam.page@bellsouth.net for bridge-related questions.

Bob Ross Style Beginners Oil Painting with Hobo Bob

3rd & 4th Thursdays: January 18 & 25 @ 1—5:00 pm
Cost: \$40.00 PP (Inc. All Supplies & WPSC Costs)

Come join us for a lot of fun!! Paint a beautiful landscape painting with us. Classes will be held on the third Thursday of each month; an overflow class will be held on the fourth Thursday of the month if there is enough interest. Please call the Center 321-425-5533 or come into the front desk and sign up.

For January we'll be painting a beautiful landscape that shows the glory of the western desert. This painting is good for beginners, and you should be quite pleased with your finished painting. This painting will bring out the inner artist you may not even know you have.



All supplies, brushes, canvas, and aprons are provided, and you'll walk away with a wonderful finished, unframed oil painting that you will be quite proud of. Remember to wear your painting clothes. The class is small, just six participants, so Hobo Bob has plenty of time to work with you as you paint your masterpiece.

Party Bridge

Wednesdays @ 12:30—4:00 pm
Cost: \$5.00 Members / \$7.00 Non-Members

This new program began on April 12. Contact Tom Sanders at 321-960-1894 for more information.

Rogue Bridge

Tuesdays @ 12:15—4:00 pm
Cost: \$1.00 Members / \$3.00 Non-Members
 Contact **Patricia Rosenthal** at 321-626-5419.

Rubber Bridge

Thurs. @ 1:00—4:00 pm & Sat. @ 12:30—3:30 pm
Cost: \$2.00 Members / \$4.00 Non-Members

Come on out for an afternoon of enjoyment at the bridge table. Questions? The point of contact for Thursday is **Janet Walker** at 321-242-3173 and the point of contact for Saturday is **Gayle Schanck** at 541-821-7070.

Bunco

1st & 3rd Thursday (Jan. 4 & 18) @ 1:00—4:00 pm
Cost: \$6.00 Members / \$8.00 Non-Members

Please join us every 1st and 3rd Thursday of the month for Bunco and arrive by 12:45 pm. Don't forget to bring your up-to-date membership card.



Bunco ends about 3-3:30 pm. Please contact **Linda** at 321-549-9893 for more details and reservations (for set-up purposes). See you there for this fun activity. All you have to know is how to throw three dice. Non-members are welcome!

Chair Yoga

Tuesdays @ 3:00—4:00 pm/Sign-in @ 2:45 pm
Cost: \$1.00 Members / \$3.00 Non-Members



This class is designed to help with overall wellbeing for the body and mind. Stretches and movements that will help increase mobility, flexibility, strength and balance. A focus on posture and breathing helps calm the mind, helps reduce stress and increase oxygen flow.

Contact **Shelly Anderson** at 321-626-1969.

Chef for Seniors

Cost: \$6.00 Members / \$8.00 Non-Members
Classes @ 11:00 am—12:30 pm—NEXT CLASS TBD

Join **Chef Jillian** for a Cooking For Seniors Class. Each Class includes an interactive cooking demonstration, free recipes, cooking tips and food tasting. Please sign up at front desk to reserve your spot.



All proceeds are donated by Chef Jillian to The Children's Hunger Project, Brevard County's Backpack Program.

Sponsored by **CarePlus**
HEALTH PLANS

Chess

Cost: \$1.00 Members / \$3.00 Non-Members
Thursdays @ 1:00—3:00 pm

Come join us for some social, relaxing Chess Play weekly. Whether you are a beginner or a more tailored player, we would love to have you join us for some social, enlightening and most of all non-stressful chess play. If interested in joining or if you have any questions, please contact **Dean Abramson** at 215-498-7511 or sign up at the table in the front lobby. We need at least 6 players to start the group!

Cornhole Tournaments

2nd & 4th Sundays @ 2:00 pm (January 14 & 28)
Setup & Practice Starting @ 1:00 pm
Cost: \$2.00 Members / \$4.00 Non-Members



Cornhole Tournaments will be held indoors at the Wickham Park Senior Center every 2nd and 4th Sundays (excluding conflict with holidays). Games include Blind Draw, Double Elimination and Payouts up to three places dependent on number of entries.

If you have any questions, please contact: **Jay Koeller** at 321-794-6400 (jkoeller18@gmail.com) or **Amy Longtin** at 321-205-5161 (ajgclrt@yahoo.com).

Hand & Foot Card Game

Mondays & Fridays 8:45 am—Noon
Setup @ 8:30 am
Cost: \$1.00 Members / \$3.00 Non-Members

Join this group of friendly and competitive players for a time well spent. Contact **Beverly Morgan** at 303-458-8273 for more information.



Stay Active.
Stay Healthy.

Color Pencil Portrait Class for Beginners

Wednesdays @ 9:30—11:00 am

Cost: \$3.00 Members / \$5.00 Non-Members

Learn how to create a beautiful drawing from your favorite photograph! Bring your own portrait photograph to copy—Size: 5x8 (or other appropriate copy size). Supplies you will need to bring:



- Prismacolor Color Pencils
- Watercolor Paper
- Eraser
- Pencil Sharpener (optional).

See Front Desk or contact **Ann Armerding** @ 321-541-7027.

Euchre

Wednesdays @ 6:00—9:00 pm

Cost: \$5.00 Members / \$7.00 Non-Members

Members must scan their card when entering and non-members must sign in.

This year there was interest in playing every Wednesday night barring any conflicts with holidays etc. It has been a great success and as our Euchre family continues to grow. It is now common to have 5-6 tables in action. We try to promptly start by 6:00 pm which means we should be signed in no later than 5:50 pm to allow time to set up the correct 3/4 player table configuration and draw for your seats.

The payout structure has been altered so more people are sharing the prize pool. That means if there are up to 30 players even eighth place takes home a piece of the purse. For more information or any questions, contact **Jay Koeller** at 321-794-6400 (jkoeller18@gmail.com).

Jazzercise Lo

Mondays, Wednesdays & Saturdays

@ 8:30-9:30 am

Fridays @ 8:30-9:15 am

Members: \$50.00/Month & Walk-ins \$10.00

Non-Members: \$79.00/Month & Walk-ins \$12.50

Join us for a fun and energized Jazzercise Lo class. Dance away those extra calories using Low Impact moves that yield MAXIMUM results! We use muscles, not momentum, to get a total body workout without the impact on your joints. For more information, contact **Ginny Parker** at 321-698-0445 or **Natalie Derrick** at 321-543-6765.

Line Dancing

Tuesdays @ 4:15—5:30 pm

Cost: \$6.00 Members / \$8.00 Non-Members



Hope everyone had a lovely holiday!!! Line Dancing will resume on **Tuesday, January 9**. Come start your 2024 with a fun class! We laugh loads, make new friends weekly, and find that Line Dance has proven to increase our memory, balance, and coordination. For more info call **Sue** at 321-505-0846. Much Love for Happiness and Health in the New Year.

There will be No Line Dance Class on Tuesday, January 2, 2024.

Mahjong

American: Mondays @ Noon—3:00 pm & Thursdays @ 9:00 am—Noon

Cost: \$1.00 Members / \$3.00 Non-Members

Chinese: Wednesdays @ 1:00—4:00 pm

Cost: \$5.00 Members / \$7.00 Non-Members

Mahjong is an activity that fosters friendly comradery and stirs the brain. Come join the fun! Questions? Contact **Patricia Rosenthal** at 321-626-5419 (American) or **Linda Milo** at 321-506-2672 (Chinese).

Pinochle

Mondays & Fridays @ 12:30—4:30 pm

Cost: \$1.00 Members / \$3.00 Non-Members

Contact **Bill Mueller** at 321-242-4999 (Mondays) or

Cathy Decker at 321-432-7813 (Fridays).



Poker (Dealers Choice)

Tuesdays & Fridays @ 11:30 am—4:00 pm

Cost: \$1.00 Members / \$3.00 Non-Members

Contact **Bill Seigel** at 813-416-0428.

Poker (Friendly)

Mondays @ 1:00—4:00 pm

Cost: \$1.00 Members / \$3.00 Non-Members

Attention: Players Needed! Pennies Only. Call ahead to attend. Contact **Vinnie Germann** at 321-253-6155.**Pool (Billiards)**

Monday thru Friday @ 8:30 am—4:30 pm

Tournaments: 2nd Wednesday of Every Month

Cost: \$1.00 Members / \$3.00 Non-Members

Plus \$.50 per Day or \$2.00 per Week

YE OL Pool Room 8-Ball Tournament 12/13/23 Results:

- 1st: Joe Franco
- 2nd: Boomer McConnell
- 3rd: Jorge Fernandez
- 4th: Dale Foster

Next tournament is January 10. Questions? Please contact **Wally Topinko** at 716-830-5978.**QiGong-TaiChi**

Mon., Wed., & Fridays @ 8:30—9:30 am

Cost: \$5.00 Members / \$7.00 Non-Members



For over 50 years, scientists at the Institute for Aging Research, an affiliate of Harvard Medical School, have been studying what causes falls among the elderly, and how to prevent them. According to researchers, one of the most promising interventions is TaiChi. It offers senior practitioners inner peace and improves balance, flexibility and mental agility. It also reduces death due to falls and injury among older adults. We focus more on the Healing Art of QiGong of TaiChi. Contact **Laura Parsons**, Certified Instructor at 321-474-5374.



FREE
AD DESIGN
with purchase
of this space
CALL 800-477-4574

WISDOM COMES WITH BENEFITS



Patricia Comesanas
Medicare Benefits Specialist
321-405-7638
Fina.solutions
ilpatfina@gmail.com



THRIVE
LOCALLY



LET'S GROW YOUR BUSINESS
Advertise in our Newsletter!

CONTACT ME
Rich Fernbach

rfernbach@lpicommunities.com
(800) 477-4574 x3675

Rummikub

Wednesdays @ 1:00—4:00 pm

Cost: \$1.00 Members / \$3.00 Non-Members

Rummikub is a tile-based game combining elements of the card game rummy and mahjong. It's an easy game to play and if you don't know how to play, our group will be happy to teach you. Come join us for a fun afternoon. Questions? Contact **Rosalie Novak** at 321-610-8021.

Senior Law

4th Friday of Each Month

NEXT CLASS JANUARY 26 @ 2:00—4:00 pm

Cost: Free to all WPSC Members

The Slonim Law Firm invites you to attend a FREE seminar and question/answer session on the 4th Friday of each month at WPSC Room 117. We will cover topics such as:

- Last Will & Testament & Trusts
- Durable Power of Attorney & Healthcare Directives
- Living Wills
- Digital Assets
- Medicaid and Asset Protection Options
- Guardianships
- Probate Matters
- General Dementia Issues

Seating is limited. Please sign up at the front desk. Questions? Please call the Law office at 321-757-5701.

Strength/Flexibility

Thursdays @ 9:30—10:30 am

Cost: \$4.00 Members / \$6.00 Non-Members



Fitness Unlimited by Design presents a class you won't want to miss and has everyone talking! This class will introduce greater strength and flexibility that your body will love and you will love going to. It also helps with posture and alignment of the spine, helps us stay limber, agile, strong and keeps our balance in check. We work on core, arm and leg strength. Go at your own pace and feel the antiaging begin. Come join us, no need to sign up, just show up. For more information, contact **Susie Salvetti** at 321-626-0282.

Social Tango, Introduction to Argentine Tango—NEW!

Fridays @ 2:30—4:30 pm

Monthly Cost: \$45 Members / \$48.00 Non-Members

Come out and enjoy the art of Argentine Tango, where students will learn to dance tango step-by-step. No partner is necessary as the basic techniques can be applied for the follower or the leader. Dolores Ashland has been teaching throughout the World, from as faraway places as Buenos Aires and Paris, France, Palm Beach, Florida and presently, here in Viera. Students will experience in-part the health benefits of Argentine tango including overall improved well-being, walking, posture and coordination. At only \$45.00 for four weeks of Tango, (you decide which four weeks will work for you and we can accommodate flexible travel plans of students as well). Any questions, contact **Delores or Walt** at 850-212-7963.

Shuffleboard

Open Play: Sat. @ 9:00 am & Thurs. @ 6:00 pm

Cost: \$1.00 Members / \$3.00 Non-Members

Call **Tom Winkelspecht** at 321-446-3283 or email: tawinkii@me.com for more information on learning how to play or participating in tournaments.



Technical Training & Education—Computer & Cell Phone

3rd Friday of Each Month

NEXT CLASS JANUARY 19 @ 2:30—3:30 pm

Cost: \$0 Members / \$3.00 Non-Members

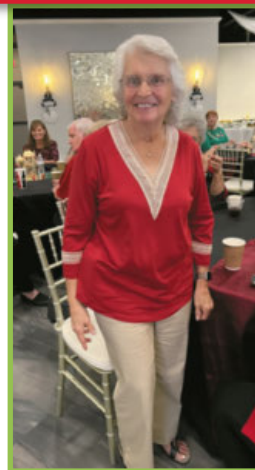


Enjoy a fun, easy-to-follow hour with a relevant and patient approach where YOU are LEARNING by DOING (instead of her explaining). No worries if you are a Beginner, First-Time

User or at an Expert level, there is something for everyone – even SPANISH speakers. But there is a 20-person limit, so sign up ASAP! The goal is to make your life more enjoyable and less stressful. Contact **Alison** at 954-376-2444.

VOLUNTEER HOLIDAY EVENT

A special event for volunteers was held on Sunday, December 10, 2023 to thank all volunteers for their hard work and dedication. It was a wonderful celebration.



We had a great turnout at the Annual Meeting on December 6, 2023. Thank you to all who participated in support of the Wickham Park Senior Center.

A person's hands are typing on a laptop. In the background, there are cardboard boxes and a roll of tape.

SUPPORT THE ADVERTISERS that Support our Community!

OUR SPONSORS

The Officers and Membership of Wickham Park Senior Center appreciate the continued support of our many Sponsors. As an all volunteer run organization, their continued financial support allows us to offer Activities and Social events for our members.

Diamond Level Sponsors



Gold Level Sponsors



Meet & Greet Sponsors

Our monthly Meet & Greets with our sponsors have started back up on Tuesday and Friday mornings from 9—11:00 am. Each sponsor will have a table set up just outside the front door or inside the lobby to provide you with information, fun giveaways, and someone knowledgeable to answer your specific questions. Please mark your calendars and come up to meet them.

- Tuesday, Jan. 2: Alzheimer's Foundation Joe's Place
- Friday, Jan. 5: VIP America
- Friday, Jan. 5: Kindred Hospitals ARU
- Tuesday, Jan. 9: Ally Senior Living Consultants
- Tuesday, Jan. 9: Cigna
- Tuesday, Jan. 9: Melbourne Denture Service
- Friday, Jan. 12: Care Plus Health Plans
- Friday, Jan. 12: Devoted Health Plans
- Tuesday, Jan. 16: American Home Care Svcs.
- Tuesday, Jan. 16: WellCare
- Friday, Jan. 19: Rosanova Eye
- Friday, Jan. 19: United Health Care
- Friday, Jan. 26: Harbor City Hearing Solutions
- Friday, Jan. 26: St. Francis Reflections

Welcome

New Members in November

Argasinski-Heraty, Helen	Lussier, Diane
Askew, Cheryl	Lussier, Roger
Aube, Kathy	Maine, Lucia
Borde-Sutherland, Dianne	Maury, Joanne
Bowman Johnson, Jewell	McClellan, Lindsay
Buck, Jeff	Morse, Richard
Burns, Kay	Mulder, Alana
Campbell, Donna	Myotte, Arlene
Carr, Mona	Neener, Elwood
Clinton, Wanda	Norris, Merrylee
Dean, Laura	Palladino, Mary
Diatlorich, Kim	Paquet, Celine
Fox, Thais	Parrot, Polly
Goodfellow, Joanne	Rang, Nancy
Hawkins, Russell	Shuh, Allan
Higgins, Barbara	Sosa, Maria Ernestina
Hudgins, Robert	Sutherland, Michael
Hunton, Rebecca	Taub, Donna
James, Linda	Taub, Joel
Johnson, Clifford	Tobey, Susan
Katz, Barbara	Weinstein, Edward
Krah, Kathi	Weinstein, Violet
Lacasse, Millie	Zarski, Angela
Long, Aila	

WPSC Email Addresses

DIRECTORY	EMAIL
WPSC President	president@bcwpsc.org
WPSC Secretary	secretary@bcwpsc.org
WPSC Treasurer	treasurer@bcwpsc.org
WPSC Scheduling	scheduling@bcwpsc.org
WPSC Information	info@bcwpsc.org
WPSC Webmaster	webmaster@bcwpsc.org
Travel Office	travel@bcwpsc.org
Front Desk Reception	reception@bcwpsc.org
Bridge Club	bridge@bcwpsc.org
Newsletter Editor	news@bcwpsc.org
Systems Administrator	itadmin@bcwpsc.org

Meet Our Staff

Officers	
President:	Diane Weinzierl
Vice President:	Gary McGuire
Secretary:	Ina Fritsch
Treasurer:	Colleen Barneman
Directors	
Celeste Garcia	Ginny Parker
Beverly Morgan	John Potanos
Janice Oppelt	Janet Smith
Pam Page	Rosann Testa
Staff	
IT Systems Admin:	John Efird
Webmaster:	Maureen Reeder
Sunshine:	JoAnn Efird
Newsletter:	Nilda Rosario

Deadline for copy submission to the newsletter is the **15th of each month**. Please email copy to:
news@bcwpsc.org

COMMENTS? We value your opinion!

There's a SUGGESTION BOX in the lobby for your feedback or ideas on how we can enhance the experience at the WPSC!



When You Have A Plan
You Can Afford to Relax
Helping Families With

Estate/Life Planning
Guardianship & Probate
Medicaid Asset Preservation

 **Slonim Law**

321.757.5701 | Slonimlaw.com

Code: WPSC



Say Yes to New Adventures

CMS Rating
★★★★★

Offering: Independent Living • Skilled Nursing Care
Individualized Rehabilitation • Therapy Services

321-452-1233

TTD# 800-545-1833 ext. 359
Language Assistance Services 562-527-5255


COURTENAY
SPRINGS
VILLAGE

1200 S Courtenay Pkwy.
Merritt Island, FL 32952
 SNF# 11070961

*Brownlie &
Maxwell*

Funeral Service & Crematory

(321) 723-2345

www.brownliemaxwell.com

1010 Palmetto Ave.
Melbourne, FL 32901



**ELITE CARE
PHARMACY**

A MEMBER OF
*The Medicine
Shopper*
FAMILY

**Prioritize your health and let us
TAKE CARE OF YOU!**

- ✓ Over 50 medications at discounted prices - Starting at \$2.00
- ✓ Same Day Home Delivery
- ✓ Human & Pet Medication Compounding
- ✓ Compliance Packaging - Pill Pouches
- ✓ 24/7 Emergency Prescription Fill Voicemail
- ✓ Medication Flavoring
- ... and MUCH MORE!

CALL US TODAY!

321-608-4949



Dr. Zuheily Vélez - PharmD
Pharmacy Manager | Owner

3680 N Wickham Rd Ste C Melbourne, FL 32935
www.EliteRxFL.com

SUPPORT OUR ADVERTISERS!

**NEVER MISS
OUR NEWSLETTER!**

SUBSCRIBE

Have our newsletter
emailed to you.



VISIT WWW.MYCOMMUNITYONLINE.COM