



Friendship Flyer

2785 Leisure Way
Melbourne, FL 32935
(321) 255-4494

Monday-Friday: 8:30 am—4:30 pm

Saturday & Sunday: CLOSED

www.bcwpsc.org

MAY 2024



President's Message



Diane Weinzierl

The weather has been so beautiful lately, it's hard to believe that the start of summer is just around the corner. Make your plans to get out of the hot sun and join us at the Center this year – we have plenty of activities going on!

I can't believe how remiss I was last month in forgetting to mention that it was Volunteer month. That old saying that "it takes a village" is so true, especially at Wickham Park Senior Center. We would not be able to operate without the help of our wonderful volunteers (and our program managers too). Many of us only see the volunteers who work the day or two that we are here, but we actually have 60 volunteers who donate their time to make sure things run smoothly here. So who are they and what do they do?

- **Front Desk** – Claire Babcock, Cindy Bennette, Mona Clark, Bernard Del Bene, Jo-Ann Efird, Celeste Garcia, Susan Grice, Mary Hughes, Barbara Klein, Marcia Luhn, Bill Minor, Ginny Parker, Elaine Sams, Bill Seigel, Sharon Sneary, Nancy Snyder, Rosann Testa, Kathy Thompson, Jacqueline Williams, Pam Young
- **Travel** – Jana Aicher, Sally Bard, Barbara Brackett, Celeste Garcia, Verna Layman, Janice Oppelt, Elaine Sams, Janet Smith, Katherine Wahl
- **Bingo** – Heather Atkins, Karen Bostwick, Chuck Burr, Brenda Clarson, Marge Detsch, Lori Ebbensgard, Maria Lopen-Tellado, Mark Polczynski, Pat Snyder, Laura Swimm, Joe Tellado, Joyce Vetter, Diane Weinzierl
- **Kitchen Concessions** – Patricia Cheary, Charlotte Hickman, Lynn Higginbotham, Rosalie Jones, Carol Lush
- **IT** – John Efird, David Leacock, JT Turner, John Potanos
- **Board of Directors** – Diane Weinzierl, Gary McGuire, Ina Fritsch, Colleen Barnamen, Celeste Garcia, Beverly Morgan, Janice Oppelt, Pam Page, Ginny Parker, John Potanos, Janet Smith, Rosann Testa
- **Other** – Gary McGuire (Scheduling & Sponsorships), Elain Guernsey (Librarian), Jay Koeller (Coke Machine), Larry Parker (Handiman), Maureen Reeder (Webmaster & Facebook), Nilda Rosario (Newsletter Publisher).

As of this writing, we have 1,324 members and these 60 volunteers do a fabulous job of keeping everyone happy. Please take a few minutes and be sure to thank each of them when you see them. If you're interested in joining the team, you can pick up a Volunteer Application at the front desk.

Tickets for the May 17 "Night at the Races" Dinner/Dance are now on sale at the Front Desk. Tickets are \$15 per person and are limited to 100 attendees. Dinner will be catered by Dustin's BBQ and the entertainment is being provided by Janice & Rene. Events throughout the night will include two (2) Horse Races (remember to bring your dollar bills to bet), Derby Pie Raffles (provided by Rosanova Eye), a 50/50 Raffle and plenty of dancing music. If you'd like to jockey a horse in the race, please let the front desk know when you purchase your ticket. The winning jockey will also receive a prize.

Happy Mother's Day and don't forget we will be closed on
Monday, May 27 for **Memorial Day**.

Mission Statement

Our Mission is to provide a congenial and happy environment for seniors to enjoy activities, meet new friends, and attend educational programs. Furthermore, to provide a resource for obtaining assistance and guidance in times of need.

"There are no strangers here, only friends you have yet to meet!"



The Wickham Park Senior Center will be CLOSED for Memorial Day on Monday, May 27, 2024.

The WPSC Board of Directors meetings are held on the 2nd Monday of each month at 9:30 am. The next meeting will be **May 13 at 9:30 am in Room 117**. All WPSC members are welcome to attend.

WPSC Sunshine Committee



Do you know a WPSC member who is sick, experienced a family member loss, or needs some cheer or support? If so, please let our Sunshine Committee know by dropping off your request in the mailbox labeled "Sunshine Committee" (located near the Billiards Room behind the front desk).

Please be sure to include the person's full name and any information you might have so we can find them in our database, as well as why you think they qualify. Also, please be sure to include your name and telephone number so we can reach you if we have any questions.

Wickham Park Senior Center INC on Facebook

We have finally secured our own Facebook page! As some of you may be aware, we have been struggling to find the administrators of other Facebook pages representing WPSC and have not been successful. Also, we have no way to have them removed.



If you do you use Facebook, please do a search for **Wickham Park Senior Center INC** and join our page: <https://www.facebook.com/WPSC.INC>

The Senior Center is 100% Operated by Volunteers!

Volunteers are the backbone of the WPSC operation. If you have a few hours to spare and would like to volunteer – please pick up a Volunteer Application at the Front Desk.



Volunteer Help Needed:

- Front Desk – Saturday mornings
9:00 am – 12:00 noon
(Note: You can volunteer every Saturday or just 1 Saturday a month)

Looking for a Worthy Charitable Donation Organization?

Wickham Park Senior Center is a 501(c)3 charitable organization and as such is eligible to receive charitable donations. We would like to thank the following people for their generous donations to WPSC in FY2024.



- Kathleen & Andrew Cole
- Lawrence Nicola – in memory of Jacque Nicola
- Gayle & Stephen Schanck
- Carol Patton (Kirby Family Fund)
- Mitchell Hait
- Jenny & John Potanos

If you find you have extra funds in your charitable donations bucket anytime during the year, please consider donating to WPSC.



Need to Schedule an Appointment with SHINE?

The WPSC SHINE Group is available Tuesdays and Thursdays from 9:00 am to Noon in Room 104. Anyone interested can call 407-514-1800 to schedule an appointment. No fee required!

Message from the Supervisor of Elections

In this busy election year, it is important for Brevard residents to Be Election Ready. For anyone wanting to register to vote, Florida offers online voter registration, which can be found on www.votebrevard.gov. To complete your registration online, you will need a Florida driver license or Florida identification card.

The Primary Election is on August 20th and voters need to remember Florida is a closed primary state, so only those registered with a political party can vote in that party's Primary Election. All voters can vote in nonpartisan races such as judicial, school board, municipal, and referenda. It's important to remember the last day to register to vote for an election or change your political party affiliation is 29 days before each election.

The final election this year will be the General Election on November 5th. In addition to the candidate races, there will be 6 statewide constitutional amendments on the ballot. Voters should also expect to see county and municipal referendums on the ballot.

Voters have the option to choose one of three methods to cast their vote in Florida. The first option is vote-by-mail. As of Dec. 31, 2022, all mail ballot requests expired, and voters are required to make a new request to receive mail ballots. To request a mail ballot, visit www.votebrevard.gov and click on the "Request Mail Ballot" tab at the top of the page, visit one of the 4 administrative offices, or call 321-290-VOTE (8683).

It is particularly important for those who vote-by-mail to have a current signature on file with our office because all signatures on returned voted mail ballots are compared with the signature in a voter's record. To update your signature, fill out a voter registration application and submit the original to one of the 4 administrative offices in person or by mail.

The second method of voting offered is Early Voting. Brevard has 10 Early Voting locations throughout the County. Locations and hours for the 10 Early Voting sites can be found on VoteBrevard.gov by clicking the "Early Voting" tab at the top of the page. The final method available to cast a ballot in Florida is at the polls on Election Day. If you're waiting to vote until Election Day, remember you must vote at your precinct specific polling location.

The Brevard County Supervisor of Elections Office takes election integrity seriously and has a dedicated page on www.votebrevard.gov which details the efforts taken to ensure the electoral process is secure and transparent. This office is the trusted source for election related information and voters are encouraged to verify information they've seen or heard by visiting www.votebrevard.gov, calling 321-290-VOTE (8683), or following my verified Facebook and X accounts.

Finally, voters are encouraged to verify their voter registration is up to date on www.votebrevard.gov with the "Registration Status" tab at the top of the page. Together, we can ensure all Brevard voters will Be Election Ready!



Important Upcoming Voting Dates



- **July 22:** Voter registration deadline for August primary
- **August 8:** Last day to request mail ballots for primary election
- **August 10–17:** Early voting for August primary
- **August 20:** Primary Election
- **October 7:** Voter registration deadline for November general election
- **October 24:** Last day to request mail ballot for general election
- **October 21–November 2:** Early voting for general election
- **November 5:** General Election

The WPSC Travel Office is OPEN Monday—Friday, 9:00 am—1:00 pm

For more information and reservations, please call Wickham Park Travel at 321-425-5530.

WPSC Travel will be happy to put your name on our "WAIT LIST" for any SOLD OUT trips.

Butterfly World

Date: May 15, 2024

Cost: \$99 PP

Time: Leave WPSC at 9:00 am / Returning at 5:00 pm

Walk through tropical, flowering gardens in six giant screened aviaries filled with twenty thousand LIVE exotic butterflies and the world's most amazing birds. Hand feed the small parrots in the Lorikeet Encounter! Botanical Gardens, Macaw Landing, Butterfly Museum, Live Bug Zoo, outdoor cafes, gift shop and garden center. Lunch on your own.

A Legendary Tribute to Neil Diamond

Date: May 25, 2024

Cost: \$179 PP

Time: Leave WPSC at 8:00 am / Returning at 8:00 pm

The name says it all! Diamond Rocks celebrates one of the most influential American artists of our time - the one and only Neil Diamond. Known the world over for his incredible tribute to Neil Diamond, Barrie Cunningham has spent most of his life entertaining in showrooms, concert halls and on major cruise lines. He brings the magic of Neil Diamond to the stage with his incredible look and precise vocals. Barrie has also received many awards including San Diego's "Entertainer of the Year" and was a principal act in a show voted Reno's "Show of the Year" 3 years straight. Visitors to Suncoast Broadway Dinner Theatre, Hudson, FL, begin with a sumptuous all-you care to eat buffet dinner complimented by a mouth watering dessert served by friendly and attentive wait staff who are often in the shows themselves.

LIPS—The Ultimate in Drag Queen Dining

Date: June 23, 2024

Cost: \$139 PP

Time: Leave WPSC at 10:30 am / Returning at 6:30 pm

Outrageous fun every Sunday afternoon. Join the ladies of Lips for the Ultimate Drag Brunch as they pullout all the stops for this spectacular show. Enjoy delicious brunch entrees plus unlimited Mimosas,

Champagne or Bloody Mary. Celebrate your special occasion with us.

Medieval Times Dinner & Tournament

Date: July 20, 2024

Cost: \$129 PP

Time: Leave WPSC at 3:30 pm / Returning at 8:00 pm

Before the start of the show, each guest is given a crown that represents where they are sitting and which color knight they will be cheering for. Once you hear the sound of trumpets, it's time for the games to begin. During the tournament, you're given a hearty meal of soup, chicken, corn, a seasoned potato, and a pastry of the castle (vegetarian meals are also available). And remember, this is the middle ages, so your utensils are your good old-fashioned hands. Located right next to the castle is a large area known as the Medieval Village.

Dali Museum & Ford's Garage Restaurant

Date: August 15, 2024

Cost: \$159 PP

Time: Leave WPSC at 7 am / Returning at 5:30 pm

The Dali Museum celebrates the life and work of Salvador Dali (1904-1989) and features works from the artist's entire career. The collection includes over 2,000 works from every moment and in every medium of his artistic activity including 96 oil paintings, many original drawings, book illustrations, prints, sculpture, photos, manuscripts and an extensive archive of documents. Founded with the works collected by Reynolds & Eleanor Morse, the Museum has made significant additions to its collection over the years.

Chattanooga Choo Choo, Tennessee

Date: September 4-7, 2024

Cost: \$1,099 Double / \$1,399 Single

\$300 Deposit & Balance Due July 1st

Insurance: \$92 PP (Payable During Reservation)

If you love trains, this tour's for you! The Incline Railway scales steep Lookout Mountain and Rock

City, featuring sweeping views, sandstone formations and gardens. The Blue Ridge Scenic Railway takes riders on a four-hour, 26-mile, roundtrip journey deep in the mountains along the Toccoa River through the countryside to the quaint sister towns of McCaysville, Georgia and Copperhill, Tennessee.

Price includes: 3 Nights Lodging and Breakfasts; 3 Dinners, including the Southern Belle Dinner Cruise; 3 Train Rides: The Missionary Ridge Local, Lookout Mountain Incline Railway, Blue Ridge Scenic Railway; Rock City Gardens; Gift for All; Luggage Handling, All Taxes, Meal & Driver Gratuities, and Bus Transportation.

Nashville Show Trip

Date: September 16-24, 2024

**Cost: \$988 PP Double / Add \$209 For Single
\$75 Deposit & Final Payment Due July 15th,
Optional Insurance Available**

Price includes: 5 nights lodging including 3 consecutive nights in the Nashville area; 8 meals (5 breakfasts & 3 Dinners); 2 Great Shows (Grand Ole Opry & Nashville Nightlife Dinner Theater); Guided Tours of Nashville and Belle Meade Historic Site & Winery; Admissions to the Country Music Hall of Fame & Museum, Grand Ole Opry Behind the Scenes Tour, Madame Tussauds Wax Museum, and Johnny Cash Museum & Patsy Cline Museum; and Motorcoach Transportation.

WPSC TRAVEL GIFT CERTIFICATE

Date issued: _____ Voucher # _____

This certificate is non transferable and can only be used for trips sponsored by Wickham Park Senior Center Travel. Please present to the Travel Office when reserving one of our trips. Expires one year from issue date.

Signature: _____



**Travel Gift Certificates are NOW AVAILABLE
in our Travel Office in Increments of \$5 to \$100!**

Great gift for birthdays, holidays, weddings and more. Membership is not required for Travel. Check out all of our upcoming trips on our website: <https://bcwpsc.org/travel>



Kathy Sorrell
Field Sales Agent
Licensed Insurance Agent

The Auto Club Group

4100 North Wickham Rd., Ste 101
Melbourne, FL 32935
321-775-4705 Office
321-427-0438 Mobile
ksorrell@acg.aaa.com

Insurance



ADT-Monitored Home Security

Get 24-Hour Protection
From a Name You Can Trust

- Burglary
- Fire Safety
- Flood Detection
- Carbon Monoxide



SafeStreets

833-287-3502

NEVER MISS OUR NEWSLETTER!

SUBSCRIBE

Have our
newsletter
emailed
to you.



Visit www.mycommunityonline.com

Place Your Ad Here and Support our Community!

Instantly create and
purchase an ad with

AD CREATOR STUDIO



lpicomunities.com/adcreator

WE'RE HIRING!

AD SALES EXECUTIVES

BE YOURSELF.
BRING YOUR PASSION.
WORK WITH PURPOSE.

- Paid training • Some travel
- Work-life balance
- Full-Time with benefits
- Serve your community



Contact us at
careers@4lpi.com or
www.4lpi.com/careers



CALENDAR OF EVENTS

MAY 2024

ACTIVITY	SCHEDULE FOR MAY	NOTES
Bingo	Tuesdays & Fridays @ 11:15A—2:00P	DOORS OPEN AT 10:00A
Bob Ross Style Beginners Oil Painting with Hobo Bob (CRI)	3rd & 4th Thursdays (May 16 & 23) @ 1:00—5:00P Sign-up Sheet at Front Desk—Limit 6 People per Class	
Bones and Balance	Mondays @ 10:00—11:00A; Register @ 9:45A	
Bridge: Beginner Class	For Virtual Classes please see our website at www.bcwpsc.org and click “Bridge” icon	
Chat	Fridays @ 9:30—11:00A	MEETS VIRTUALLY
Duplicate	On-Site Games: Mon., Wed., & Sat. @ 12:30—4:00P On-site Class: Wednesdays @ 11:00A—Noon Virtual Classes: Thursdays @ 12:15P on the BBO platform	
Party Bridge	Wednesdays @ 12:30-4:00P	
Rogue	Tuesdays @ 12:15—4:00P	
Rubber	Thursdays @ 1:00-4:00P & Saturdays @ 12:30-3:30P	
Bunco	1st & 3rd Thursdays (May 2 & 16) @ 1:00—4:00P	
Chair Yoga	Tuesdays @ 3:00—4:00P	
Chefs for Seniors	Next Class May 9 @ 11:00A—12:30P Sign-up Sheet at Front Desk	
Color Pencil Portrait for Beginners	Wednesdays @ 9:30—11:00A	
Cornhole Tournaments	May 12 & 26 @ 2:00P—Set-up & Practice @ 1:00P	
Euchre	Wednesdays @ 6:00—9:00P	
Hand & Foot	Mondays & Fridays @ 8:45A—Noon	
Jazzercise Lo	Mondays, Wednesdays & Saturdays @ 8:30—9:30A Fridays @ 8:30—9:15A	
Line Dancing	Tuesdays @ 4:15—5:30P	
Mahjong: American	Mondays @ Noon—3:30P Thursdays @ 9:00A—Noon	
Chinese	Wednesdays @ 1:00—4:00P	
Pinochle	Mondays & Fridays @ 12:30—4:30P	
Poker: Dealers Choice	Tuesdays & Fridays @ 11:30A—4:00P	
Friendly	Mondays @ 1:00—4:00P	
Pool (Billiards)	Monday thru Friday @ 8:30A—4:30P	
QiGong-TaiChi	Mondays, Wednesdays & Fridays @ 8:30—9:30A	
Rummikub	Wednesdays @ 1:00-4:00P	
Senior Law	4th Friday of the Month (May 24) @ 2:00—4:00P Sign-up Sheet at Front Desk	
Senior Stitchers (NEW)	Fridays @ 10:00A—Noon in Room 117 Sign-up Sheet at Front Desk	
SHINE	Tuesdays & Thursdays @ 9:00A—Noon	
Strength / Flexibility	Thursdays @ 9:30—10:30A	
Shuffleboard: Open Play	Saturdays @ 9:00A—Noon	
Tango Dance Class	Fridays @ 2:30—4:30P NO CLASSES IN MAY, JUNE & JULY	CLASS RESUMES ON AUGUST 9
Technical Training & Education Class with Alison	3rd Friday (May 17) @ 1:15—4:00P	ON COMPUTERS & CELL PHONES

Program details and times are subject to change. Please check the daily schedule at the Front Desk for the latest information.

NEW UPDATES



TUESDAY & FRIDAY—Open to the Public!
Doors Open @ 10:00 am



Cards Sold @ 10:30 am – 11:30 am
Early Bird Starts @ 11:15 am

Join us and play 29 games including Early-Bird, 50/50, Winner-Take-All and Progressive games. Minimum package starts at \$6. Bingo payouts adjusted based on attendance. Kitchen open from 10:00 am to 11:30 am. For more info, contact **Brenda Clarson** at 321-258-8837.

Bones & Balance

Mondays @ 10:00—11:00 am
Cost: \$5.00 Members / \$7.00 Non-Members

Start your week with healthy aging exercise. Chairs, weights and exercise bands will be used to improve your core strength, posture and balance. All major muscles will get a workout. Certified personal trainer and certified group fitness instructor with 29 years of experience at Pro Health/Health First. Please wear comfortable shoes! For more information, contact **Marcia Luhn** at 321-543-6358.



Bob Ross Style Beginners Oil Painting with Hobo Bob (CRI)

3rd & 4th Thursdays: May 16 & 23 @ 1—5:00 pm
Cost: \$40.00 PP (Inc. All Supplies & WPSC Costs)

Come join us for a lot of fun!! Paint a beautiful landscape painting with us. Classes will be held on the third Thursday of each month; an overflow class will be held on the fourth Thursday of the month if there is enough interest. Please call the Center 321-425-5533 or come into the front desk and sign up.

How Painting Helps You: It is a proven fact that learning to paint brings joy into people's lives. When we learn to create on canvas, we open a part of our brain and expand our capacities in other areas of our lives. Here are just a few of the benefits that we know about:

- Promotes Stress Relief
- Builds Confidence
- Expands Creative Growth
- Enhances Problem-Solving and Motor Skills
- Great distraction for Pain Management
- Provides hours of Satisfying Entertainment
- And the list can go on and on!

For May we'll be painting a beautiful landscape that shows spring-time in the Blue Ridges. This painting is good for beginners, and you should be quite pleased with your finished painting. This painting will bring out the inner artist you may not even know you have.



All supplies, brushes, canvas, and aprons are provided, and you'll walk away with a wonderful finished, unframed oil painting that you will be quite proud of. Remember to wear your painting clothes. The class is small, just six participants, so Hobo Bob (CRI) has plenty of time to work with you as you paint your masterpiece.

Party Bridge

Wednesdays @ 12:30—4:00 pm
Cost: \$5.00 Members / \$7.00 Non-Members

Please contact **Tom Sanders** at 321-960-1894 prior to coming to this bridge for the first time.

Wickham Park Senior Center is not equipped, nor intended to be a senior care facility. WPSC activities are geared toward independent adults who are able to manage their own care, decisioning making and safety. WPSC's insurance prohibits, and WPSC cannot be responsible for, the provision of physical assistance to individuals on the premises. If an adult companion is needed, the companion may participate in the activity if they desire, regardless of age, and must pay all fees associated with the activity. WPSC reserves the right to prevent persons from being on premises if the WPSC leadership believes that person would cause harm to themselves or others.

Duplicate Bridge

On-site Games: Mon., Wed. & Sat. @ 12:30—4:30P
 Cost: \$7.00 Members / \$9.00 Non-Members

CLASSES:

On-site Class: Wednesday @ 11:00A—Noon. Free to those playing Bridge after class—\$5.00 if not playing.

Online Virtual Classes: Thursdays @ 12:15P on the BBO platform / Online classes \$5.00

Duplicate bridge classes have resumed on-site Monday, Wednesday and Saturday. Virtual online classes are also available. For the online schedule, please check out the latest on the website under the Bridge tab. Contact **Pam Page** at 321-537-0907 or pam.page@bellsouth.net for bridge-related questions.



Rogue Bridge

Tuesdays @ 12:15—4:00 pm

Cost: \$1.00 Members / \$3.00 Non-Members

Contact **Patricia Rosenthal** at 321-626-5419.

Rubber Bridge

Thurs. @ 1:00—4:00 pm & Sat. @ 12:30—3:30 pm

Cost: \$2.00 Members / \$4.00 Non-Members



Come on out for an afternoon of enjoyment at the bridge table. Questions? The Thursday point of contact is **Janet Walker** at 321-242-3173 and the Saturday point of contact is **Gayle Schanck** at 541-821-7070.

Bunco

1st & 3rd Thursday, **May 2 & 16** @ 1:00—4:00 pm

Cost: \$6.00 Members / \$8.00 Non-Members

Please join us every 1st and 3rd Thursday of the month for Bunco and arrive by 12:45 pm. Don't forget to bring your up-to-date membership card. Bunco ends about 3-3:30 pm. Please contact **Linda** at 321-549-9893 for more details and reservations (for set-up purposes). See you there for this fun activity. All you have to know is how to throw three dice. Non-members are welcome!



Chair Yoga

Tuesdays @ 3:00—4:00 pm/Sign-in @ 2:45 pm
 Cost: \$1.00 Members / \$3.00 Non-Members

This class is designed to help with overall wellbeing for the body and mind. Stretches and movements that will help increase mobility, flexibility, strength and balance. A focus on posture and breathing helps calm the mind, helps reduce stress and increase oxygen flow. Contact **Shelly Anderson** at 321-626-1969.



Chef for Seniors

Cost: \$6.00 Members / \$8.00 Non-Members
 Classes @ 11:00 am—12:30 pm

- May 9: Smoothies
- July 11: TBD
- September 12: TBD
- November 14: TBD



Join **Chef Jillian** for a Cooking For Seniors Class. Each Class includes an interactive cooking demonstration, free recipes, cooking tips and food tasting. Please sign up at front desk to reserve your spot.

All proceeds are donated by Chef Jillian to The Children's Hunger Project, Brevard County's Backpack Program.

Sponsored by:  and 
 Moore Insurance Solutions
 Dr. Jaya Prakash, MD, MPH
 COACHJAYAHEALTH, LLC

Cornhole Tournaments

Sunday, **May 12 & 26** @ 2:00 pm

Setup & Practice Starting @ 1:00 pm

Cost: \$2.00 Members / \$4.00 Non-Members



Cornhole Tournaments will be held indoors at the Wickham Park Senior Center every 2nd and 4th Sundays (excluding conflict with

holidays). Games include Blind Draw, Double Elimination and Payouts up to three places dependent on number of entries. For any questions, please contact: **Jay Koeller** at 321-794-6400 (jkoeller18@gmail.com) or **Amy Longtin** at 321-205-5161 (ajgclrt@yahoo.com).

Hand & Foot Card Game

Mondays & Fridays 8:45 am—Noon

Setup @ 8:30 am

Cost: \$1.00 Members / \$3.00 Non-Members

Join this group of friendly and competitive players for a time well spent. Please contact **Beverly Morgan** at 303-458-8273 for more information.

Color Pencil Portrait Class for Beginners

Wednesdays @ 9:30—11:00 am

Cost: \$3.00 Members / \$5.00 Non-Members

Learn how to create a beautiful drawing from your favorite photograph! Bring your own portrait photograph to copy—Size: 5x8 (or other appropriate copy size). Supplies you will need to bring:

- Prismacolor Color Pencils
- Watercolor Paper
- Eraser
- Pencil Sharpener (optional).



For more information, contact **Ann Armerding @ 321-541-7027**.

Euchre

Wednesdays @ 6:00—9:00 pm

Cost: \$5.00 Members / \$7.00 Non-Members

Members must scan their card when entering and non-members must sign in.

This year there was interest in playing every Wednesday night barring any conflicts with holidays etc. It has been a great success and as our Euchre family continues to grow. It is now common to have 5-6 tables in action. We try to promptly start by 6:00 pm which means we should be signed in no later than 5:50 pm to allow time to set up the correct 3/4 player table configuration and draw for your seats.

The payout structure has been altered so more people are sharing the prize pool. That means if there are up to 30 players even eighth place takes home a piece of the purse. For more information or any questions, contact **Jay Koeller** at 321-794-6400 (jkoeller18@gmail.com).



Jazzercise Lo

Mondays, Wednesdays & Saturdays @ 8:30-9:30 am

Fridays @ 8:30-9:15 am

Members: \$50.00/Month & Walk-ins \$10.00

Non-Members: \$79.00/Month & Walk-ins \$12.50

Join us for a fun and energized Jazzercise Lo class. Dance away those extra calories using Low Impact moves that yield MAXIMUM results! We use muscles, not momentum, to get a total body workout without the impact on your joints. For more information, contact **Ginny Parker** at 321-698-0445.

Line Dancing

Tuesdays @ 4:15—5:30 pm

Cost: \$6.00 Members / \$8.00 Non-Members

Line Dancing for Fun and Exercise! Every Tuesday from 4:15-5:30. Come get some SPRING in your step and join the fun of making new friends! Line Dancing creates a gratifying way to get some exercise while strengthening your balance and neurological stability. Come check us out! Don't miss the FUN!! Call Sue for more information at 321-505-0846.



Mahjong

American: Mondays @ Noon—3:00 pm & Thursdays @ 9:00 am—Noon

Cost: \$1.00 Members / \$3.00 Non-Members

Chinese: Wednesdays @ 1:00—4:00 pm

Cost: \$5.00 Members / \$7.00 Non-Members

Mahjong is an activity that fosters friendly comradery and stirs the brain. Come join the fun! Questions? Please contact **Patricia Rosenthal** at 321-626-5419 (American) or **Linda Milo** at 321-506-2672 (Chinese).



Pinochle

Mondays & Fridays @ 12:30—4:30 pm

Cost: \$1.00 Members / \$3.00 Non-Members

Contact **Bill Mueller** at 321-242-4999 (Mondays) or **Cathy Decker** at 321-432-7813 (Fridays).

Poker (Dealers Choice)

Tuesdays & Fridays @ 11:30 am—4:00 pm
 Cost: \$1.00 Members / \$3.00 Non-Members
 Contact **Bill Seigel** at 813-416-0428.

Poker (Friendly)

Mondays @ 1:00—4:00 pm
 Cost: \$1.00 Members / \$3.00 Non-Members
 Attention: Players Needed! Pennies Only. Call ahead to attend. Contact **Vinnie Germann** at 321-253-6155.

Pool (Billiards)

Monday thru Friday @ 8:30 am—4:30 pm
 Tournaments: 2nd Wednesday of Every Month
 Cost: \$1.00 Members / \$3.00 Non-Members
 Plus \$.50 per Day or \$2.00 per Week

YE OL Pool Room 8-Ball Tournament 4/10/24 Results:

1st: Dale Foster	3rd: Jorge Fernandez
2nd: Dave Reeve	4th: Dave Wyatt

Next tournament is May 8. Questions? Please contact **Wally Topinko** at 716-830-5978.

QiGong-TaiChi

Mon., Wed., & Fridays @ 8:30—9:30 am
 Cost: \$5.00 Members / \$7.00 Non-Members

For over 50 years, scientists at the Institute for Aging Research, an affiliate of Harvard Medical School, have been studying what causes falls among the elderly, and how to prevent them. According to researchers, one of the most promising interventions is TaiChi. It offers senior practitioners inner peace and improves balance, flexibility and mental agility. It also reduces death due to falls and injury among older adults. We focus more on the Healing Art of QiGong of TaiChi. **Laura Parsons**, Certified Instructor at 321-474-5374.

Rummikub

Wednesdays @ 1:00—4:00 pm
 Cost: \$1.00 Members / \$3.00 Non-Members

Rummikub is a tile-based game combining elements of the card game rummy and mahjong. It's an easy game to play and if you don't know how to play, our group will be happy to teach you. Come join us for a fun afternoon. Questions? Contact **Rosalie Novak** at 321-610-8021.



FREE
 AD DESIGN
 with purchase
 of this space
CALL 800-477-4574

WISDOM COMES WITH BENEFITS



Patricia Comesanas
 Medicare Benefits Specialist
 321-405-7638
 Fina.solutions
 ilpatfina@gmail.com




THRIVE
 LOCALLY

LET'S GROW YOUR BUSINESS
 Advertise in our Newsletter!

CONTACT ME
Rich Fernbach

rfernbach@lpicommunities.com
 (800) 477-4574 x3675

Shuffleboard

Open Play: Saturdays & Mondays @ 9:00 am & Thursdays @ 6:00 pm

Cost: \$1.00 Members / \$3.00 Non-Members

Call Tom Winkelspecht at 321-446-3283 or email: tawinkii@me.com for more information on learning how to play or participating in tournaments.

Senior Law

NEXT CLASS MAY 24 @ 2:00—4:00 pm

NO CLASSES IN JUNE, JULY, AUGUST, NOVEMBER & SEPTEMBER

Cost: Free to all WPSC Members

The Slonim Law Firm invites you to attend a FREE seminar and question/answer session on the 4th Friday of each month at WPSC Room 117. Topics:



- Last Will & Testament & Trusts
- Durable Power of Attorney & Healthcare Directives
- Digital Assets
- Medicaid and Asset Protection Options
- General Dementia Issues
- Guardianships
- Probate Matters
- Living Wills

Seating is limited. Please sign up at the front desk. Any questions, call the Law office at 321-757-5701.

Senior Stitchers—NEW!

Fridays @ 10:00 am—Noon in Room 117

Cost: \$1.00 Members / \$3.00 Non-Members

Would you like to learn to Knit or Crochet? Do you already know how to Knit or Crochet? If so, please join us for a morning of friendship and pleasant conversation while learning new skills and stitches while helping each other to share and improve our skills. What to Bring:

- If you are already experienced, please bring a WORK IN PROGRESS that you'd like to work on.
- If you're a beginner, please bring some worsted yarn and some Size 8 knitting needles or a Size G crochet hook.

Please sign up at the Front Desk. For more information contact Laurie Liguori at 917-882-9898.

Social Tango, Introduction to Argentine Tango

NO CLASSES IN MAY, JUNE & JULY
CLASS RESUMES ON AUGUST 9

Fridays @ 2:30—4:30 pm

Monthly Cost: \$45 Members / \$48.00 Non-Members

Come out and enjoy the art of Argentine Tango, where students will learn to dance tango step-by-step. No partner is necessary as the basic techniques can be applied for the follower or the leader. Students will experience in-part the health benefits of Argentine tango including overall improved well-being, walking, posture and coordination. At only \$45.00 for four weeks of Tango, (you decide which four weeks will work for you). Any questions, contact Delores or Walt at 850-212-7963.

Strength/Flexibility

Thursdays @ 9:30—10:30 am

Cost: \$4.00 Members / \$6.00 Non-Members

Fitness Unlimited by Design presents a class you won't want to miss and has everyone talking! This class will introduce greater strength and flexibility that your body will love and you will love going to. It also helps with posture and alignment of the spine, helps us stay limber, agile, strong and keeps our balance in check. We work on core, arm and leg strength. Go at your own pace and feel the antiaging begin. Come join us, no need to sign up. For more information, contact Susie Salvetti at 321-626-0282.



Technical Training & Education on Computer & Cell Phone

3rd Friday of Each Month MAY 17 @ 1:15—4:00 pm

Cost: \$0 Members / \$3.00 Non-Members

Beginner Cell Phone: 1:15—2:15 pm

Intermediate to Advanced: 2:30—3:30 pm

Laptop computer: 3:30—4:30 pm

(iPad/ tablet questions taken during any class)



Try one or stay for all 3! Room 117 end of the hall, 18-person limit. Use the sign-up sheet on the front table or text /call Alison at 954-376-2444 to confirm.

Exercise your brain in a fun, interactive hour with a relevant and patient approach. Bring your toughest and most burning phone and computer questions! For more personalized assistance, unsure of your level, or for desktop computers, don't hesitate to call Alison at 954-376-2444.



MAY 2024 DINNER/DANCE

Night at the Races!



FRIDAY

May 17

4:30—7:00 PM



AT THE

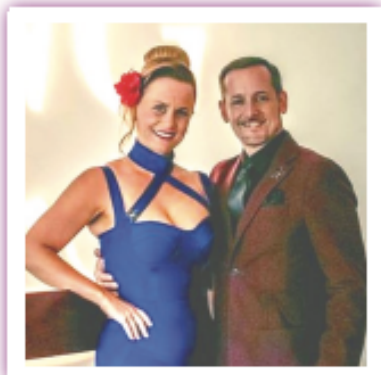
**Wickham Park
Senior Center**

\$15 Per Person—Tickets on Sale Starting April 15

Dinner Provided by



Served 4:45—5:30pm



Entertainment provided by
Janice & Rene

“Be sure to bring your dollar bills to bet on the annual WPSC Races!”

The Central East Coast District Shuffleboard Association Hall of Fame

The Central East Coast District Shuffleboard Association proudly announces the induction of Suzie Christian, Belinda Jones, and Sheila Winkelspecht into the Central East Coast District Shuffleboard Hall of Fame.

To qualify for induction, players must accumulate a minimum of 250 lifetime points, a feat accomplished by Suzie Christian, Belinda Jones, and Sheila Winkelspecht through their dedication, skill, and passion for shuffleboard.

Furthermore, the Central East Coast District Shuffleboard Association is delighted to honor Greg Jones with induction into the Hall of Fame as the outgoing District President. Greg's leadership, commitment, and unwavering dedication to the advancement of shuffleboard have left an indelible mark on the sport and the community.



Suzie Christian



Belinda Jones



Sheila Winkelspecht



Greg Jones

SUPPORT THE ADVERTISERS
that Support our Community!

OUR SPONSORS

The Officers and Membership of Wickham Park Senior Center appreciate the continued support of our many Sponsors. As an all volunteer run organization, their continued financial support allows us to offer Activities and Social events for our members.

Diamond Level Sponsors



Gold Level Sponsors



Meet & Greet Sponsors

Our monthly Meet & Greets with our sponsors have started back up on Tuesday and Friday mornings from 9—11:00 am. Each sponsor will have a table set up just outside the front door or inside the lobby to provide you with information, fun giveaways, and someone knowledgeable to answer your specific questions. Please mark your calendars and come up to meet them.

- Friday, May 3: Kindred Hospitals ARU
- Tuesday, May 14: Cigna
- Friday, May 17: United Health Care
- Friday, May 24: Rosanova Eye
- Friday, May 24: VIP America

Welcome

New Members in March

Balkema, Duane	Leeds, Cathy
Boyle, Patricia	Locascio, Diana
Brown, Carol	Mann, Susan
Bruce, Pamela	McClellan, John
Bryant, Deborah	Moore, Michael
Busch, Robert	Nasi, Jerry
Clarke, Michael	O'Quinn, Dennis
Costas, Gloria	Parker, Peggy
Davis, Shari (Sharon)	Pillot, Magda
Davison, Cheryl	Rowe, Belinda
Gagnon, Cynthia (Cyd)	Ruhl, Fannie
Gaspar, Jeanne	Seely, Karen
Goynes, RoRie	Shaw, Georgiana
Hunt, Dianna	Spavin, Karen
Hunt, L.E.	Sullivan, Suk
Hylden, Mary	Tarpey, Jane
Jurgrau, Michael	Treffeisen, Laura
Karisson, Rolf	Won, Moon
Keane, Ellen	Won, Young
Kolodchak, Janyth (Jan)	Zychowski, Malivan
Kolodchak, William	

Wickham Park Senior Center Holiday Closures for 2024

To enable our volunteers to spend more time with their families during the upcoming holiday season, Wickham Park Senior Center will be closed on the following dates:

- **Memorial Day Holiday** – Monday, May 27, 2024
- **4th of July Holiday** – Thursday, July 4, 2024
- **Labor Day Holiday** – Monday, Sept. 2, 2024
- **Thanksgiving Holiday:**
 - Wednesday, Nov. 27, 2024 (Day before Thanksgiving)
 - Thursday, Nov. 28, 2024 (Thanksgiving Day)
 - Friday, Nov. 29, 2024 (Friday after Thanksgiving)
- **Christmas Holiday:**
 - Tuesday, Dec. 24, 2024 (Day before Christmas)
 - Wednesday, Dec. 25, 2024 (Christmas Day)
 - Thursday, Dec. 26, 2024 (Day after Christmas)
- **New Year's Holiday:**
 - Wednesday, January 1, 2025 (New Year's Day)

Meet Our Staff

Officers

President:	Diane Weinzierl
Vice President:	Gary McGuire
Secretary:	Ina Fritsch
Treasurer:	Colleen Barneman

Directors

Celeste Garcia	Ginny Parker
Beverly Morgan	John Potanos
Janice Oppelt	Janet Smith
Pam Page	Rosann Testa

Staff

IT Systems Admin:	John Efirm
Webmaster:	Maureen Reeder
Sunshine:	JoAnn Efirm
Newsletter:	Nilda Rosario

Deadline for copy submission to the newsletter is the **15th of each month**. Please email copy to:
news@bcwpsc.org

COMMENTS? We value your opinion!

There's a SUGGESTION BOX in the lobby for your feedback or ideas on how we can enhance the experience at the WPSC!



WPSC Email Addresses

DIRECTORY	EMAIL
WPSC President	president@bcwpsc.org
WPSC Secretary	secretary@bcwpsc.org
WPSC Treasurer	treasurer@bcwpsc.org
WPSC Scheduling	scheduling@bcwpsc.org
WPSC Information	info@bcwpsc.org
WPSC Webmaster	webmaster@bcwpsc.org
Travel Office	travel@bcwpsc.org
Front Desk Reception	reception@bcwpsc.org
Bridge Club	bridge@bcwpsc.org
Newsletter Editor	news@bcwpsc.org
Systems Administrator	itadmin@bcwpsc.org

When You Have A Plan
You Can Afford to Relax
Helping Families With

Code: WPSC

Estate/Life Planning
Guardianship & Probate
Medicaid Asset Preservation

 **Slonim Law**

321.757.5701 | Slonimlaw.com



**ELITE CARE
PHARMACY**

A MEMBER OF
*The Medicine
Shopper*
FAMILY

**Prioritize your health and let us
TAKE CARE OF YOU!**

- ✓ Over 50 medications at discounted prices - Starting at \$2.00
- ✓ Same Day Home Delivery
- ✓ Human & Pet Medication Compounding
- ✓ Compliance Packaging - Pill Pouches
- ✓ 24/7 Emergency Prescription Fill Voicemail
- ✓ Medication Flavoring
- ... and MUCH MORE!

CALL US TODAY!

321-608-4949



Dr. Zuheily Vélez - PharmD
Pharmacy Manager | Owner

3680 N Wickham Rd Ste C Melbourne, FL 32935
www.EliteRxFL.com

Say Yes to New Adventures

CMS Rating
★★★★★



Offering: Independent Living • Skilled Nursing Care
Individualized Rehabilitation • Therapy Services

321-452-1233

TTD# 800-545-1833 ext. 359
Language Assistance Services 562-527-5255


COURTENAY
SPRINGS
VILLAGE

1200 S Courtenay Pkwy.
Merritt Island, FL 32952


*Brownlie &
Maxwell*

Funeral Service & Crematory

(321) 723-2345

www.brownliemaxwell.com

1010 Palmetto Ave.
Melbourne, FL 32901

SUPPORT OUR ADVERTISERS!

**NEVER MISS
OUR NEWSLETTER!**

SUBSCRIBE

Have our newsletter
emailed to you.



VISIT WWW.MYCOMMUNITYONLINE.COM