



# Friendship Flyer

2785 Leisure Way  
Melbourne, FL 32935  
(321) 255-4494

Monday-Friday: 8:30 am—4:30 pm

Saturday & Sunday: CLOSED

[www.bcwpsc.org](http://www.bcwpsc.org)

SEPTEMBER 2024



## President's Message



Diane Weinzierl

I love September because it always welcomes in just a HINT of cooler weather (at least in the mornings when I'm out walking the dog), with the promise of what's to come just around the corner. It's also the busiest time of year for us at the Center when we are planning our year-end activities.

**Flu Vaccine will be Available at WPSC** - Courtesy of Hobbs Pharmacy, we will again be offering the Flu Vaccine at WPSC on Friday, September 20 from 9:00 am to 12:00 noon. Both the high dose for those over 65 and regular flu vaccines will be available. Make sure to sign up at the front desk ahead of time and be sure to bring your insurance card!

**Arts & Crafts/Rummage Sale** - Don't forget to mark your calendars to join us for our annual Arts & Crafts/Rummage Sale on Saturday, September 28 from 8 am to 1 pm. This event is FREE to attend and is open to the public. We expect a big crowd since we're combining our event with the quarterly Community Center Rummage Sale. The large hall will be filled with tables selling a variety of items, and we're even adding another room to sell items for a WPSC Center fund-raiser. If you're interested in purchasing a table to sell items, please see the flyer on page 2 with details.

**Halloween Dinner/Dance** - The plans for the October 25 Halloween Dinner/Dance have now been finalized. This year we're planning to award 3 prizes for the best costumes – 1 for the Scariest, 1 for the Funniest, and 1 for the Most Creative. I was amazed at the costumes last year and I can't wait to see what everyone comes up with for this year's event. Catering will be provided by Genna Pizza Company and the entertainment will be provided by Rick & Frank, a local group with excellent vocals and harmonies performed to a variety of your favorite songs. Check out the details on page 12.

**New Workshops Announced** - We've just announced 3 Fusion Glass Workshops on Saturday afternoons – one on October 19, one on November 9 and one on January 11. No "artistic/creative" skills are required to make these projects out of fusible glass. Each workshop includes all materials and is limited to 16 attendees. More details can be found on page 13. Be sure to sign up early.

**SMILE - You Could Be On Camera**. This past month we've installed a new security camera system at the Center which includes more cameras (including outside the kitchen and outside ALL of the doors), as well as the latest technology which will allow us to make better use of the system. Now we will have the ability to find out who that "I don't know who did that" person is when things mysteriously happen.

Watch for more details next month about our upcoming elections and our end of year Annual Meeting/Wine & Cheese Event in December.

Have a great Labor Day Holiday Weekend – and don't forget we will be closed Monday, September 2 for the holiday.

## Mission Statement

**Our Mission is to provide a congenial and happy environment for seniors to enjoy activities, meet new friends, and attend educational programs. Furthermore, to provide a resource for obtaining assistance and guidance in times of need.**

***"There are no strangers here, only friends you have yet to meet!"***



**The Wickham Park Senior Center will be CLOSED for Labor Day on Monday, September 2, 2024.**

The WPSC Board of Directors meetings are held on the 2nd Monday of each month at 9:30 am. The next meeting will be **September 9 at 9:30 am in Room 117**. All WPSC members are welcome to attend.

## Get Your Flu Vaccine at WPSC (Courtesy of Hobbs Pharmacy)

**Schedule:** Friday, Sept 20 in Room 117

**Hours:** 9:00 am – 12:00 Noon

Open to all members and non-members. Must bring your insurance card! Limited spots at each event – sign-up sheets at front desk.

Both the high dose for those over 65 and regular flu vaccines will be available.

## Welcome New Volunteers

Please welcome our 2024 New Volunteers:

- **Veronica Ahern** – Front Desk
- **Barbara Brackett** – Travel
- **Colette Campanelli** – Front Desk
- **Barbara Carlson** – Bingo
- **Patricia Cheary** – Kitchen
- **Lori Ebbersgard** – Bingo
- **Barbara Perkins** – Front Desk



If you'd like to join our volunteer team, please pick up a Volunteer Application from the Front Desk.



## Need to Schedule an Appointment with SHINE?

The WPSC SHINE Group is available Tuesdays from 9:00 am to 12:00 Noon in Room 104. Anyone interested can call 407-514-1800 to schedule an appointment. No fee required!



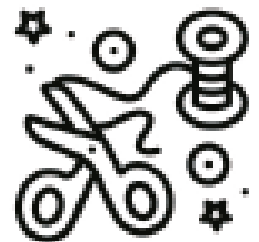
## Arts/Crafts & Rummage Sale

**Wickham Park Senior Center**

**Open to the public -FREE to attend!**



**Saturday, Sept. 28th  
8:00AM -1:00PM  
Vendors- \$20 Table**



Vendor applications can be picked up at the front desk or printed on our website. This year our event will be held in conjunction with Wickham Park Community Center's Rummage Sale.

2785 Leisure Way, Melbourne, Florida 32935

[www.bcwpssc.org/](http://www.bcwpssc.org/)

**Call Ginny: 321-698-0445**



## Wickham Park Dedication Benches

*Submitted by Nilda Rosario*

DATE: **Sunday, September 15, 2024**  
 TIME: **1:00 pm—4:00 pm**  
 PLACE: **Wickham Park Senior Center**  
 DONATION: **\$20.00 to Play**

Join the fun while supporting the American Cancer Society! There will be prizes, raffles, food and more! You must sign up to play. Table space is limited. Bring a dish or finger food to share. To reserve a space, call or text **Ginny Parker** at 321-698-0445.

## Looking for a Worthy Charitable Donation Organization?

Wickham Park Senior Center is a 501(c)3 charitable organization and as such is eligible to receive charitable donations. We would like to thank the following people for their generous donations to WPCS in FY2024.



- Kathleen & Andrew Cole
- Lawrence Nicola – in memory of Jacque Nicola
- Gayle & Stephen Schanck
- Carol Patton (Kirby Family Fund)
- Mitchell Hait
- Jenny & John Potanos
- Travel Expressions, Inc.

If you find you have extra funds in your charitable donations bucket anytime during the year, please consider donating to WPCS.

My mother, Basilisa Rosario-Benitez, passed at the age of 101 last November. In preparing for this fateful day, she was very adamant about not having a funeral or any tearful, sad ceremony. She lived a long and peaceful life here in Florida with me for over 30 years. But in my heart, I knew I needed to honor her in some way.

My friends and I meet every Wednesday at Wickham Park and I also walk the park twice a week. I noticed the memorial benches. **That was it!!** A perfect place to sit and reminisce the wonderful years with Mom, as well as a resting place for all others that walk the park. The Wickham Park Ranger Supervisor, Jessica Fowler, was instrumental in advising me of the park rules and regulations, connecting me with the contractor for the bench and the planning of its location. The park also allowed me to plant a tree in her honor. We are lucky that there are many parks throughout Brevard County in West Melbourne, Palm Bay, Indialantic, Satellite Beach to name a few, that will also allow for dedication benches.



On July 27, 2024 two days after what would have been Mom's 102 birthday, we held a Dedication Ceremony. Deacon Albert Gutierrez officiated the blessing of the bench and tree. No sadness, no tears



but a celebration of life! I'm sure there are other ways to honor the love ones that we lose, but for me this was a perfect way to honor my mother.

Wickham Park Senior Center is not equipped, nor intended to be a senior care facility. WPSC activities are geared toward independent adults who are able to manage their own care, decisioning making and safety. WPSC's insurance prohibits, and WPSC cannot be responsible for, the provision of physical assistance to individuals on the premises. If an adult companion is needed, the companion may participate in the activity if they desire, regardless of age, and must pay all fees associated with the activity. WPSC reserves the right to prevent persons from being on premises if the WPSC leadership believes that person would cause harm to themselves or others.

The WPSC Travel Office is OPEN Monday—Friday, 9:00 am—1:00 pm  
For more information and reservations, please call Wickham Park Travel at 321-425-5530.

### Nashville Show Trip

**Date:** September 16-21, 2024

**Cost:** \$988 PP Double / Add \$209 For Single

**Time:** Leaves WPSC at 8:00 am

**Includes:** 5 nights lodging with 3 consecutive nights in the Nashville area; 8 meals, 2 Great Shows (Grand Ole Opry & Nashville Nightlife Dinner Theater); Guided Tours of Nashville and Belle Meade Historic Site & Winery; Admissions to the Country Music Hall of Fame & Museum, Grand Ole Opry Behind the Scenes Tour, and more.

### St. John's River Cruise & Music Bingo

**Date:** October 3, 2024

**Cost:** \$169 PP

**Time:** Leaves WPSC at 10:15 am / Returns at 5:00 pm

From its home port on Lake Monroe in charming downtown Sanford, the Barbara Lee cruises the St. John's River, serving up superior food, live music, and dancing.

### Snapshots—A Musical Scrapbook & Lunch at Cheesecake Factory

**Date:** October 13, 2024

**Cost:** \$189 PP

**Time:** Leaves WPSC at 10:00 am / Returns at 6:00 pm

*Southeastern Regional Premiere!* This new musical features an outstanding score by Academy Award winning composer Stephen Schwartz and incorporates over two dozen of his beloved songs from Wicked, Pippin, Godspell and more.

### Mount Dora Craft Fair

**Date:** October 26, 2024

**Cost:** \$69 PP

**Time:** Leaves WPSC at 7:30 am / Returns at 5:30 pm

Throughout this historic community, the streets come alive with more than 400 talented crafters & artists from all over the country displaying and offering for sale their finest works to the more than 100,000 visitors who are expected to attend this two-day event.

### Stetson Mansion Grand Tour

**Date:** November 9, 2024

**Cost:** \$179 PP

**Time:** Leaves WPSC at 9:45 am / Returns at 4:30 pm

Florida's Most Historic Home. The 1886 Stetson Mansion is Florida's most historic home, only Gilded Age mansion, and the largest, grandest, most innovative home ever built in Florida before 1900. Lunch at Cook's Restaurant.

### Rat Pack Holiday Show

**Date:** November 16, 2024 - Show @ 1:00 pm

**Cost:** \$199 PP

**Time:** Leaves WPSC at 7:30 am / Returns at 7:00 pm

Take a trip back to the 1960s, when the Rat Pack—Frank Sinatra, Sammy Davis Jr. and Dean Martin brought fame and recognition to Las Vegas. They reunite on stage to belt out a few classics including Luck Be a Lady, Lady is a Tramp and New York, New York. Includes lunch.

### Mount Dora Christmas

**Date:** December 6, 2024

**Cost:** \$69 PP

**Time:** Leaves WPSC at 3:00 pm / Returns at 10:30 pm

Celebrate the 2024 holidays against a backdrop of over two million sparkling lights in beautiful downtown Mount Dora. Visit the Mount Dora Christmas Walk for an old fashioned country Christmas. The streets come alive as they are transformed into a Christmas village.

### St. Augustine's Nights of Lights

**Date:** December 11, 2024

**Cost:** \$75 PP

**Time:** Leaves WPSC at 12:30 pm / Returns at 9:00 pm

Depart Wickham Park in a 50-seat motorcoach arriving in St. Augustine at approximately 2:30 pm. Enjoy free time for shopping and dining on your own. Then meet at Visitors Center for 30-minute trolley ride through the Christmas Lights.

## 2025

### The Bikinis—A New Musical Beach Party

**Date:** January 30, 2025

**Cost:** \$189 PP

**Time:** Leaves WPSC at 10:30 am / Returns at 5:30 pm

Everyone's favorite girl group from the 60s is back together again after 20 years and they're bringing back the sun, fun and all the great songs they sang down on the boardwalk in 1964. Includes Lunch.

### LIPS

**Date:** February 9, 2025

**Cost:** \$145 PP

**Time:** Leaves WPSC at 11:00 am / Returns at 6:30 pm

Outrageous fun every Sunday afternoon. Join the ladies of Lips for the Ultimate Drag Brunch and a spectacular show. Includes unlimited Mimosas.



## Singin' in the Rain

**Date:** March 6, 2025

**Cost:** \$199 PP

**Time:** Leaves WPSC at 10:30 am / Returns at 5:30 pm

The "Greatest Movie Musical of All Time" is faithfully and lovingly adapted by Broadway legends, Betty Comden and Adolph Green from their original award-winning screenplay. Includes lunch.

## Waitress Broadway Musical

**Date:** May 8, 2025 - Show @ 1:00 pm

**Cost:** \$189 PP (Includes Lunch)

**Time:** Leaves WPSC at 7:30 am / Returns at 7:00 pm

The heartwarming musical of Jenna, a small-town waitress with a talent for baking pies, who serves up a story of resilience, friendship and the pursuit of happiness.



## 11-Day Alaska Land & Sea Cruise

**Destination:** Anchorage to Vancouver

**Ship:** Holland America's Nieuw Amsterdam

**Date:** June 4-14, 2025

Includes: Airfare from Orlando, FL; baggage handling; hotel; train at Whittier, Alaska; taxes; port charges; transportation; all gratuities; \$50 pp shipboard credit; beverage package; free WIFI; and, Pinnacle Dining.

### Pricing & Insurance:

Cabin Double/Insurance		Cabin Single/Insurance
\$5,399 / \$339	Inside	\$6,799 / \$379
\$5,699 / \$397	Oceanview	\$7,299 / \$479
\$6,499 / \$399	Balcony	\$8,499 / \$529

*Deposit of \$600 must be paid at time of reservation. Final payment & mandatory insurance is due by March 6, 2025. Insurance is non-refundable.*

## Myrtle Beach & Dinner Cruise

**Date:** December 1-5, 2025

**Cost:** \$1,399 PP Double / \$1,699 PP Single

Package includes 4 spectacular holiday shows: Carolina Opry, Alabama Theatre, Legends & Motown Christmas Tribute Show and much more!



**Kathy Sorrell**  
Field Sales Agent  
Licensed Insurance Agent

### The Auto Club Group

4100 North Wickham Rd., Ste 101  
Melbourne, FL 32935  
321-775-4705 Office  
321-427-0438 Mobile  
ksorrell@acg.aaa.com

Insurance



## WE APPRECIATE OUR ADVERTISERS!

They allow us to print this bulletin. Thank you!

## Place Your Ad Here and Support our Community!

Instantly create and purchase an ad with

### AD CREATOR STUDIO



[lpicommunities.com/adcreator](http://lpicommunities.com/adcreator)

## ADT-Monitored Home Security

Get 24-Hour Protection  
From a Name You Can Trust

- Burglary
- Flood Detection
- Fire Safety
- Carbon Monoxide



SafeStreets

833-287-3502



For ad info. call 1-800-477-4574 • [www.lpicommunities.com](http://www.lpicommunities.com)

16-0351

# CALENDAR OF EVENTS

## SEPTEMBER 2024

ACTIVITY	SCHEDULE FOR SEPTEMBER	NOTES
Bingo	Tuesdays & Fridays @ 11:15A—2:00P	DOORS OPEN AT 10:00A
Bob Ross Style Beginners Oil Painting with Hobo Bob (CRI)	3rd & 4th Thursdays (Sept. 19 & 26) @ 1:00—5:00P Sign-up Sheet at Front Desk—Limit 6 People per Class	
Bones and Balance	Mondays @ 10:00—11:00A; Register @ 9:45A	
Bridge: Beginner Class	For Virtual Classes please see our website at <a href="http://www.bcwpssc.org">www.bcwpssc.org</a> and click "Bridge" icon	
Chat	Fridays @ 9:30—11:00A	MEETS VIRTUALLY
Duplicate	On-Site Games: Mon., Wed., & Sat. @ 12:30—4:00P On-site Class: Wednesdays @ 11:00A—Noon Virtual Classes: Thursdays @ 12:15P on the BBO platform	NO GAME ON SEPTEMBER 28
Party Bridge	Wednesdays @ 12:30-4:00P	
Rogue	Tuesdays @ 12:15—4:00P	
Rubber	Thursdays @ 1:00-4:00P & Saturdays @ 12:30-3:30P	NO GAME ON SEPTEMBER 28
Bunco	1st & 3rd Thursdays (September 5 & 19) @ 1:00—4:00P	
Chair Yoga	Tuesdays @ 3:00—4:00P	
Chefs for Seniors	Next Class September 12 @ 11:00A—12:30P Sign-up Sheet at Front Desk	
Color Pencil Portrait for Beginners	Wednesdays @ 9:30—11:00A	
Cornhole Tournaments	September 8 & 22 @ 1:30P—Set-up & Practice @ 1:00P	
Euchre	Wednesdays @ 6:00—9:00P	
Fusion Glass Workshops	Oct. 19, Nov. 9, 2024 & Jan. 11, 2025 @ Noon—3:00P Must Pay in Advance	NEW WORKSHOP
Hand & Foot	Mondays & Fridays @ 8:45A—Noon	
Jazzercise Lo	Mondays, Wednesdays & Saturdays @ 8:30—9:30A Fridays @ 8:30—9:15A	NO CLASS ON SEPTEMBER 28
Line Dancing	Tuesdays @ 4:15—5:30P	
Mahjong: American	Mondays @ Noon—3:30P Thursdays @ 9:00A—Noon	
Chinese	Wednesdays @ 1:00—4:00P	
Pinochle	Mondays & Fridays @ 12:30—4:30P	
Poker: Dealers Choice	Tuesdays & Fridays @ 11:30A—4:00P	
Friendly	Mondays @ 1:00—4:00P	
Pool (Billiards)	Monday thru Friday @ 8:30A—4:30P	
QiGong-TaiChi	Mondays, Wednesdays & Fridays @ 8:30—9:30A	
Rummikub	Wednesdays @ 1:00-4:00P	
Senior Law	4th Friday of the Month @ 2:00—4:00P Sign-up Sheet at Front Desk	NEXT SEMINAR SEPTEMBER 27
Senior Stitchers	Thursdays @ 10:00A—Noon in Room 117 Classes moving to THURSDAYS starting in September Sign-up Sheet at Front Desk	CLASSES RESUME ON THURSDAY, SEPTEMBER 5
SHINE	Tuesdays @ 9:00A—Noon	
Strength / Flexibility	Thursdays @ 9:30—10:30A	
Shuffleboard: Open Play	Thursdays @ 6:00P—8:30P; Saturdays @ 9:00A—Noon	
Tango Dance Class	Fridays @ 2:30—4:30P	
Technical Training & Education Class with Alison	3rd Friday (September 20) @ 2:30—4:30 pm Phone/Tablet/IPAD Beginners @ 2:30—3:15 pm and Intermediate to Advanced @ 3:15—4:00 pm. Laptops All Levels @ 4:00—4:30 pm	BRING YOUR OWN DEVICES

Program details and times are subject to change. Please check the daily schedule at the Front Desk for the latest information.

NEW UPDATES



**TUESDAY & FRIDAY—Open to the Public!**  
Doors Open @ 10:00 am

**Cards Sold @ 10:30 am – 11:15 am**  
**Early Bird Starts @ 11:15 am**



Join us and play 29 games including Early-Bird, 50/50, Winner-Take-All and Progressive games. Minimum package starts at \$6. Bingo payouts adjusted based on attendance. Kitchen open from 10:00 am to 11:30 am. For more information, contact **Brenda Clarson** at 321-258-8837.

## Bones & Balance

**Mondays @ 10:00—11:00 am**

**Cost: \$5.00 Members / \$7.00 Non-Members**

Start your week with healthy aging exercise. Chairs, weights and exercise bands will be used to improve your core strength, posture and balance. All major muscles will get a workout. Certified personal trainer and certified group fitness instructor with 29 years of experience at Pro Health/Health First. Please wear comfortable shoes! For more information, contact **Marcia Luhn** at 321-543-6358.



## Bob Ross Style Beginners Oil Painting with Hobo Bob (CRI)

**3rd & 4th Thursdays: Sept. 19 & 26 @ 1:00—5:00 pm**  
**Cost: \$40.00 PP (Inc. All Supplies & WPSC Costs)**

Come join us for a lot of fun!! Paint a beautiful landscape painting with us. Classes will be held on the third Thursday of each month; an overflow class will be held on the fourth Thursday of the month if there is enough interest. Please call the Center 321-425-5533 or come into the front desk and sign up.

For September, we'll be painting a beautiful landscape scene with Autumn trees. This painting is good for beginners, and you should be quite pleased with your finished painting. This painting will bring out the inner artist you may not even know you have.



All supplies, brushes, canvas, and aprons are provided, and you'll walk away with a wonderful finished, unframed oil painting that you will be quite proud of. Remember to wear your painting clothes. The class is small, just six participants, so Hobo Bob (CRI) has plenty of time to work with you as you paint your masterpiece.

## Duplicate Bridge

**On-site Games: Mon., Wed. & Sat. @ 12:30—4:30P**

**Cost: \$7.00 Members / \$9.00 Non-Members**

**NO CLASS ON SEPTEMBER 28**

### CLASSES:

**On-site Class: Wed. @ 11:00A—Noon. Free to those playing Bridge after class—\$5.00 if not playing.**

**Online Virtual Classes: Thursdays @ 12:15P on the BBO platform / Online classes \$5.00**

Duplicate bridge classes have resumed on-site Monday, Wednesday and Saturday. Virtual online classes are also available. For the online schedule, please check out the latest on the website under the Bridge tab. Contact **Pam Page** at 321-537-0907 or [pam.page@bellsouth.net](mailto:pam.page@bellsouth.net) for bridge-related questions.

## Party Bridge

**Wednesdays @ 12:30—4:00 pm**

**Cost: \$5.00 Members / \$7.00 Non-Members**

Please contact **Tom Sanders** at 321-960-1894 prior to coming to this bridge for the first time.



## Rogue Bridge

**Tuesdays @ 12:15—4:00 pm**

**Cost: \$1.00 Members / \$3.00 Non-Members**

Contact **Patricia Rosenthal** at 321-626-5419.

## Rubber Bridge

**Thurs. @ 1:00—4:00 pm & Sat. @ 12:30—3:30 pm**

**Cost: \$2.00 Members / \$4.00 Non-Members**

**NO CLASS ON SEPTEMBER 28**

Come on out for an afternoon of enjoyment at the bridge table. Questions? The Thursday point of contact is **Janet Walker** at 321-242-3173 and the Saturday point of contact is **Gayle Schanck** at 541-821-7070.



## Bunco

**1st & 3rd Thursday, Sept. 5 & 19 @ 1:00—4:00 pm**

**Cost: \$6.00 Members / \$8.00 Non-Members**



Please join us every 1st and 3rd Thursday of the month for Bunco and arrive by 12:45 pm. Don't forget to bring your current membership card. Bunco ends about 3-3:30 pm.

Please contact **Linda** at

321-549-9893 for more details and reservations (for set-up purposes). See you there for this fun activity. All you have to know is how to throw three dice.

## Chair Yoga

**Tuesdays @ 3:00—4:00 pm/Sign-in @ 2:45 pm**

**Cost: \$1.00 Members / \$3.00 Non-Members**

This class is designed to help with overall wellbeing for the body and mind. Stretches and movements that will help increase mobility, flexibility, strength and balance. A focus on posture and breathing helps calm the mind, helps reduce stress and increase oxygen flow. Contact **Shelly Anderson** at 321-626-1969.



## Chef for Seniors

**Classes @ 11:00 am—12:30 pm**

**Cost: \$6.00 Members / \$8.00 Non-Members**

- **September 12: Fall Flavors**
- **November 14: Healthy Holidays**

Join **Chef Jillian** for a Cooking For Seniors Class. Each Class includes an interactive cooking demonstration, free recipes, cooking tips and food tasting. Please sign up at front desk to reserve your spot.

**All proceeds are donated by Chef Jillian to The Children's Hunger Project, Brevard County's Backpack Program.**

Sponsored by:



and

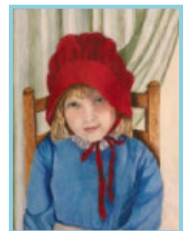


## Color Pencil Portrait Class for Beginners

**Wednesdays @ 9:30—11:00 am**

**Cost: \$3.00 Members / \$5.00 Non-Members**

Learn how to create a beautiful drawing from your favorite photograph! Bring your own portrait photograph to copy—Size: 5x8 (or other appropriate copy size). Supplies you will need to bring: Prismacolor Color Pencils, Watercolor Paper, Eraser, Pencil Sharpener (optional). For more information contact **Ann Armerding** @ 321-541-7027.



## Cornhole Tournaments

**Sunday, September 8 & 22 @ 1:30 pm**

**Setup & Practice Starting @ 1:00 pm**

**Cost: \$2.00 Members / \$4.00 Non-Members**

Cornhole is welcome to all ages! Cornhole Tournaments will be held indoors at the Wickham Park Senior Center every 2nd and 4th Sundays (excluding conflict with holidays). Games include Blind Draw, Double Elimination and Payouts up to three places dependent on number of entries. Don't forget to scan your membership card at the front desk.

### Cornhole Rules for Senior Center:

- Age 50 to 69 – 27 ft. front edge to front edge; (Distance of Boards)
- Age 70 to 79 - 25 ft. front edge to front edge
- Age 80 Plus/Non-Ambulatory - 23 ft. front edge to front edge

For any questions, please contact **Jay Koeller** at 321-794-6400 (jkoeller18@gmail.com) or **Amy Longtin** at 321-205-5161 (ajgclrt@yahoo.com).



## Euchre

**Wednesdays @ 6:00—9:00 pm**

**Cost: \$5.00 Members / \$7.00 Non-Members**

**Members must scan their card when entering and non-members must sign in.**

Euchre has been a great success and as our Euchre family continues to grow, it is now common to have 5-6 tables in action. We try to promptly start by 6:00 pm which means we should be signed in no later than 5:50 pm to allow time to set up the correct 3/4 player table configuration and draw for your seats. The payout structure has been altered so more people are sharing the prize pool. That means if there are up to 30 players even eighth place takes home a piece of the purse. For more information, contact **Jay Koeller** at 321-794-6400 (jkoeller18@gmail.com).

## Hand & Foot Card Game

**Mondays & Fridays 8:45 am—Noon / Setup @ 8:30 am**

**Cost: \$1.00 Members / \$3.00 Non-Members**

Join this group of friendly and competitive players for a time well spent. Please contact **Beverly Morgan** at 303-458-8273 for more information.

## Jazzercise Lo

**Mondays, Wednesdays & Saturdays @ 8:30-9:30 am**

**Fridays @ 8:30-9:15 am**

**Members: \$50.00/Month & Walk-ins \$10.00**

**Non-Members: \$79.00/Month & Walk-ins \$12.50**

Join us for a fun and energized Jazzercise Lo class. Dance away those extra calories using Low Impact moves that yield MAXIMUM results! We use muscles, not momentum, to get a total body workout without the impact on your joints. For more information, contact **Ginny Parker** at 321-698-0445.

## Line Dancing

**Tuesdays @ 4:15—5:30 pm**

**Cost: \$6.00 Members / \$8.00 Non-Members**



Line Dancing for Fun and Exercise has welcomed several new members throughout

the summer. Please come and see what the excitement is about. We have a fun, energetic class of a variety of music selections to dance to. Line Dancing is a great contributor to your improved balance as well as relieving stress while making new friends. Come join us! **Sue Duncan**, Professional Instructor Choreographer for over 60 years. 321-505-0846.

## Mahjong

**American: Mondays @ Noon—3:00 pm & Thursdays @ 9:00 am—Noon**

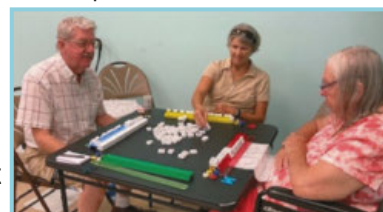
**Cost: \$1.00 Members / \$3.00 Non-Members**

**Chinese: Wednesdays @ 1:00—4:00 pm**

**Cost: \$5.00 Members / \$7.00 Non-Members**

Mahjong is an activity that fosters friendly comradery and stirs the brain. Come join the fun! Questions? Contact

**Patricia Rosenthal** at 321-626-5419 (American) or **Linda Milo** at 321-506-2672 (Chinese).



## Pinochle

**Mondays & Fridays @ 12:30—4:30 pm**

**Cost: \$1.00 Members / \$3.00 Non-Members**



Contact **Bill Mueller** at 321-242-4999 (Mondays) or **Cathy Decker** at 321-432-7813 (Fridays).

## Poker (Dealers Choice)

**Tuesdays & Fridays @ 11:30 am—4:00 pm**

**Cost: \$1.00 Members / \$3.00 Non-Members**

Contact **Bill Seigel** at 813-416-0428.

## Poker (Friendly)

**Mondays @ 1:00—4:00 pm**

**Cost: \$1.00 Members / \$3.00 Non-Members**

Attention: Players Needed! Pennies Only. Call ahead to attend. Contact **Vinnie Germann** at 321-253-6155.

## Pool (Billiards)

**Monday thru Friday @ 8:30 am—4:30 pm**

**Tournaments: 2nd Wednesday of Every Month**

**Cost: \$1.00 Members / \$3.00 Non-Members**

**Plus \$ .50 per Day or \$2.00 per Week**

YE OL Pool Room 8-Ball Tournament 8/14/24 Results:

1st: Mickey Ferguson

2nd: Larry Hoff

3rd: Jerry Bertekap

4th: Sam Campese

Next tournament is September 11.

Questions? Please contact **Wally**

**Topinko** at 716-830-5978.



## QiGong-TaiChi

Mon., Wed., & Fridays @ 8:30—9:30 am

Cost: \$5.00 Members / \$7.00 Non-Members



For over 50 years, scientists at the Institute for Aging Research, an affiliate of Harvard Medical School, have been studying what causes falls

among the elderly, and how to prevent them. One of the most promising interventions is TaiChi. It offers senior practitioners inner peace and improves balance, flexibility and mental agility. It also reduces death due to falls and injury among older adults. We focus more on the Healing Art of QiGong of TaiChi. **Laura Parsons**, Certified Instructor at 321-474-5374.

## Senior Law

4th Friday of the Month **Sept. 27** @ 2:00—4:00P

Cost: Free to All WPSC Members

The Slonim Law Firm invites you to attend a FREE seminar and question/answer session on the 4th Friday of each month at WPSC Room 117. Topics:



SLONIM LAW

- Last Will & Testament & Trusts
- Durable Power of Attorney & Healthcare Directives
- Digital Assets
- Medicaid and Asset Protection Options
- General Dementia Issues
- Guardianships
- Probate Matters
- Living Wills

Seating is limited. Please sign up at the front desk. Any questions, call the Law office at 321-757-5701.



**FREE**  
AD DESIGN  
with purchase  
of this space

**CALL 800-477-4574**

**SUPPORT OUR  
ADVERTISERS!**

**WE'RE HIRING!**  
AD SALES EXECUTIVES



**BE YOURSELF.  
BRING YOUR PASSION.  
WORK WITH PURPOSE.**

- Paid training
- Some travel
- Work-life balance
- Full-Time with benefits
- Serve your community



Contact us at  
[careers@4lpi.com](mailto:careers@4lpi.com) or  
[www.4lpi.com/careers](http://www.4lpi.com/careers)

**LET'S GROW YOUR BUSINESS**  
Advertise in our Newsletter!

**CONTACT ME**  
**Rich Fernbach**

[rfernbach@lpicommunities.com](mailto:rfernbach@lpicommunities.com)

**(800) 477-4574 x3675**



## Rummikub

**Wednesdays @ 1:00—4:00 pm**

**Cost: \$1.00 Members / \$3.00 Non-Members**



Rummikub is a tile-based game combining elements of the card game rummy and mahjong. It's an easy game to play and if you don't know how to play, our group will be happy to teach you. Come join us for a fun afternoon. Contact **Peggy Miles**

at 732-688-6268.

## Senior Stitchers

**Thursdays @ 10:00 am—Noon in Room 114**

**Cost: \$1.00 Members / \$3.00 Non-Members**

**RESUMES ON THURSDAY, SEPTEMBER 5**

Would you like to learn to Knit or Crochet or do you already know how to Knit or Crochet? If so, please join us for a morning of friendship and pleasant conversation while learning new skills and stitches while helping each other to share and improve our skills. What to Bring:

- If you are already experienced, please bring a **WORK IN PROGRESS** that you'd like to work on.
- If you're a beginner, please bring some worsted yarn and some Size 8 knitting needles or a Size G crochet hook.



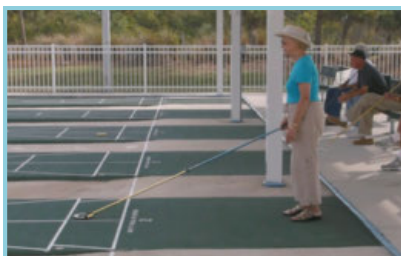
Please sign up at the Front Desk. For more information contact **Laurie Liguori** at 917-882-9898.

## Shuffleboard

**Open Play: Saturdays @ 9:00 am &**

**Thursdays @ 6:00 pm**

**Cost: \$1.00 Members / \$3.00 Non-Members**



For more information on learning how to play or participating in tournaments, call **Tom Winkelspecht** at 321-446-3283 or email:

[tawinkii@me.com](mailto:tawinkii@me.com)

## Social Tango, Introduction to Argentine Tango

**Fridays @ 2:30—4:30 pm**

**Monthly Cost: \$45 Members / \$48.00 Non-Members**

Come out and enjoy the art of Argentine Tango, where students will learn to dance tango step-by-step. No partner is necessary as the basic techniques can be applied for the follower or the leader. Students will experience in-part the health benefits of Argentine tango including overall improved well-being, walking, posture and coordination. At only \$45.00 for four weeks of Tango, (you decide which four weeks will work for you and we can accommodate flexible travel plans of students as well). Any questions, contact **Delores or Walt** at 850-212-7963.

## Strength/Flexibility

**Thursdays @ 9:30—10:30 am**

**Cost: \$4.00 Members / \$6.00 Non-Members**

Fitness Unlimited by Design presents a class you won't want to miss and has everyone talking! This class will introduce greater strength and flexibility that your body will love and you will love going to. It also helps with posture and alignment of the spine, helps us stay limber, agile, strong and keeps our balance in check. We work on core, arm and leg strength. Come join us, no need to sign up. For more information, contact **Susie Salvetti** at 321-626-0282.

## Technical Training & Education on Computer & Cell Phone

**3rd Friday of the Month Sept. 20 @ 2:30—4:30 pm**

**Cost: \$0 Members / \$3.00 Non-Members**

**Phone/Tablet/IPAD Beginners: 2:30—3:15 pm and Intermediate to Advanced: 3:15—4:00 pm**  
**Laptops All Levels (Bring Your Own): 4:00—4:30 pm**  
**(iPad/ Tablet questions taken during any class)**

Try one or stay for all 3! Room 117 end of the hall, 18-person limit. Use the sign-up sheet at the front desk or text /call **Alison** at 954-376-2444 to confirm. Exercise your brain in a fun and interactive small-group atmosphere. Effective, relevant, and patient approach. For more personalized assistance, unsure of your level, or for desktop computers, don't hesitate to contact Alison.





# WICKHAM PARK SENIOR CENTER

## 2024 HALLOWEEN DINNER

Friday, October 25 @ 4:30–7:00 PM

**\$15 Per Person**

**Tickets on Sale at the Front Reception Desk starting  
Monday, September 30**

*\*\*Event limited to 100 people and we expect it to sell out quickly.\*\**

Dinner will be Served 4:30–5:30 pm Catered by **GENNA**  
PIZZA COMPANY

Chicken Parmigiana & Pasta with Sauce 🍄 Salad & Garlic Knots

Cake & Cookies 🍷 Iced Tea & Coffee

### Other Festivities Include:

Prizes for Best Costumes - Funniest, Scariest and Most Creative Costume

Monster Stomp Dance Contest 🧟 50/50 Raffle 🎃 Photo Booth

**Music & Dancing Entertainment  
Provided By**



**RICK & FRANK**

**Sponsored By**

Travel  
Expressions  
INC.

## NEW! Fusion Glass Workshops

Saturday, October 19, 2024	<b>Lighted Display</b>	12:00 Noon – 3:00 pm
Saturday, November 9, 2024	<b>Holiday Ornaments</b>	12:00 Noon – 3:00 pm
Saturday, January 11, 2025	<b>Suncatcher Chimes</b>	12:00 Noon – 3:00 pm

Explore an unique art medium that you might just get addicted to. No “artistic/creative” skills are required to make these projects out of fusible glass. Have no idea what “fusible glass” is? Don’t worry, instructor **Lauren Richeson** will explain. Each class is designed to be fun and no stress. Each workshop has a 4-person minimum and 16-person maximum, so grab your seats early and invite your friends to sign up too. For safety reasons, closed-toe shoes are required.

You start with a general introduction into the process of “kiln-firing” glass. We will learn how to cut basic shapes and “paint” with colored glass sand. You then create a project design of your own choosing—

your imagination is the limit! There is a large palette of colors and types of glass to use. Your art is finished off-site and you can pick them up from Lauren several days later or have it shipped for an additional fee.

For the October 19 workshop, you’ll be creating a Lighted Panel Display (10.5”x5.5”). Create a peaceful garden, Halloween scene, beach scene, an abstract piece or anything that strikes your fancy.



The cost of each workshop is **\$70 per person**, including all supplies and kiln-firing of projects. Classes must be reserved and paid for in advance via the website below:

<https://laurenrichesongalleriesstore.square.site/>

For questions, call or text Lauren Richeson at 310-483-3229 or email:

[cookinwithglass@lricheson.com](mailto:cookinwithglass@lricheson.com)

**SUPPORT THE  
ADVERTISERS**  
that Support our  
Community!



## OUR SPONSORS

The Officers and Membership of Wickham Park Senior Center appreciate the continued support of our many Sponsors. As an all volunteer run organization, their continued financial support allows us to offer Activities and Social events for our members.

### *Diamond Level Sponsors*



### *Gold Level Sponsors*



### *Meet & Greet Sponsors*

Our monthly Meet & Greets with our sponsors have started back up on Tuesday and Friday mornings from 9—11:00 am. Each sponsor will have a table set up just outside the front door or inside the lobby to provide you with information, fun giveaways, and someone knowledgeable to answer your specific questions. Please mark your calendars and come up to meet them.

- Friday, September 6: Kindred Hospitals ARU
- Friday, September 6: Travel Expressions
- Tuesday, September 10: Cigna Insurance
- Friday, September 13: Parasol Modern Living for Active Adults
- Friday, September 20: United Health Care
- Friday, September 27: Rosanova Eye
- Friday, September 27: VIP America



## Welcome

### New Members in July

Agustine, C. Susan	McClure, Bill
Ahern, Veronica	Morris, Theresa
Canham, Linda	O'Connor, Myong
Casko, Beth	Parker, Bill
Ceravolo, Philomena	Pena, Debbie
Codella, John	Ratner, Barbara
Dowling, JoAnne	Reisert, Vicci
England, Karen	Rinaldi, Lisa
Falter, Ilamae	Robling, Mary
Ferrara, Betty	Sasso, Valerie
Fowler, Marge	Selikowitz, Peter
Hargreaves, Terry	Sheffield, Diane
Kellam, Russell (Rusty)	Tilbury, Deanna
Kellam, Sherrill	Tutty, Beverlyan
Kohler, Jonathan	Van De Maat, Donald
Krueger, Judy	Voltaire, Joanne
Loftin, Samuel L.	Wen, Lijie
Marn, Diane	Whitesitt, Celia
Marn, Donald	Wood, Belle

### WPSC Email Addresses

DIRECTORY	EMAIL
WPSC President	president@bcwpsc.org
WPSC Secretary	secretary@bcwpsc.org
WPSC Treasurer	treasurer@bcwpsc.org
WPSC Scheduling	scheduling@bcwpsc.org
WPSC Information	info@bcwpsc.org
WPSC Webmaster	webmaster@bcwpsc.org
Travel Office	travel@bcwpsc.org
Front Desk Reception	reception@bcwpsc.org
Bridge Club	bridge@bcwpsc.org
Newsletter Editor	news@bcwpsc.org
Systems Administrator	itadmin@bcwpsc.org

### Wickham Park Senior Center Holiday Closures for 2024

To enable our volunteers to spend more time with their families during the upcoming holiday season, Wickham Park Senior Center will be closed on the following dates:

- **Labor Day Holiday** – Monday, Sept. 2, 2024
- **Thanksgiving Holiday:**
  - Wednesday, Nov. 27, 2024 (Day before Thanksgiving)
  - Thursday, Nov. 28, 2024 (Thanksgiving Day)
  - Friday, Nov. 29, 2024 (Friday after Thanksgiving)
- **Christmas Holiday:**
  - Tuesday, Dec. 24, 2024 (Day before Christmas)
  - Wednesday, Dec. 25, 2024 (Christmas Day)
  - Thursday, Dec. 26, 2024 (Day after Christmas)
- **New Year's Holiday:**
  - Wednesday, January 1, 2025 (New Year's Day)

### Meet Our Staff

#### Officers

President:	Diane Weinzierl
Vice President:	Gary McGuire
Secretary:	Ina Fritsch
Treasurer:	Colleen Barneman

#### Directors

Celeste Garcia	Ginny Parker
Beverly Morgan	John Potanos
Janice Oppelt	Janet Smith
Pam Page	Rosann Testa

#### Staff

IT Systems Admin:	John Efird
Webmaster:	Maureen Reeder
Sunshine:	JoAnn Efird
Newsletter:	Nilda Rosario

Deadline for copy submission to the newsletter is the **15th of each month**. Please email copy to:  
**news@bcwpsc.org**

### COMMENTS? We value your opinion!

There's a SUGGESTION BOX in the lobby for your feedback or ideas on how we can enhance the experience at the WPSC!



**When You Have A Plan  
You Can Afford to Relax  
Helping Families With**

Estate/Life Planning  
Guardianship & Probate  
Medicaid Asset Preservation

 **Slonim Law**

321.757.5701 | [Slonimlaw.com](http://Slonimlaw.com)

Code: WPSC



**Say Yes to New Adventures**

CMS Rating



**Offering:** Independent Living • Skilled Nursing Care  
Individualized Rehabilitation • Therapy Services

**321-452-1233**

TTD# 800-545-1833 ext. 359  
Language Assistance Services 562-527-5255

 **COURTENAY  
SPRINGS  
VILLAGE**

1200 S Courtenay Pkwy.  
Merritt Island, FL 32952

SNF# 11070961

*Brownlie &  
Maxwell*

Funeral Service & Crematory

**(321) 723-2345**

[www.brownliemaxwell.com](http://www.brownliemaxwell.com)

1010 Palmetto Ave.  
Melbourne, FL 32901



**ELITE CARE  
PHARMACY**

A MEMBER OF  
*The Medicine  
Shopper*  
FAMILY

**Prioritize your health and let us  
TAKE CARE OF YOU!**

- ✓ Over 50 medications at discounted prices - Starting at \$2.00
- ✓ Same Day Home Delivery
- ✓ Human & Pet Medication Compounding
- ✓ Compliance Packaging - Pill Pouches
- ✓ 24/7 Emergency Prescription Fill Voicemail
- ✓ Medication Flavoring
- ... and MUCH MORE!

**CALL US TODAY!**

**321-608-4949**

Dr. Zuheily Vélez - PharmD  
Pharmacy Manager | Owner

3680 N Wickham Rd Ste C Melbourne, FL 32935  
[www.EliteRxFL.com](http://www.EliteRxFL.com)



  
**WATERMAN  
REAL ESTATE**

**Linda Cass**

Parishioner

**321-704-5203**

[The.Cass.house@gmail.com](mailto:The.Cass.house@gmail.com)  
[lindacass.spacecoastmls.com](http://lindacass.spacecoastmls.com)

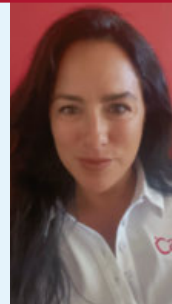
**CarePlus**  
HEALTH PLANS

**Kristine Quattrone**  
**Licensed Insurance Agent**

Brevard & Indian River County

[Kquattrone@careplus-hp.com](mailto:Kquattrone@careplus-hp.com)

**321-326-4033**



**NEVER MISS  
OUR NEWSLETTER!**

**SUBSCRIBE**

Have our newsletter  
emailed to you.



VISIT [WWW.MYCOMMUNITYONLINE.COM](http://WWW.MYCOMMUNITYONLINE.COM)



For ad info. call 1-800-477-4574 • [www.lpicommunities.com](http://www.lpicommunities.com)

16-0351