



Friendship Flyer

2785 Leisure Way
Melbourne, FL 32935
(321) 255-4494

Monday-Friday: 8:30 am—4:30 pm

Saturday: 9:00 am—Noon

Sunday: CLOSED

www.bcwpssc.org

NOVEMBER 2024



President's Message

Wow – I can't believe it's November already. Last month brought us Hurricane Milton which forced us to close the center for a full week – fortunately we had no damage. Other highlights for the month:



Diane Weinzierl

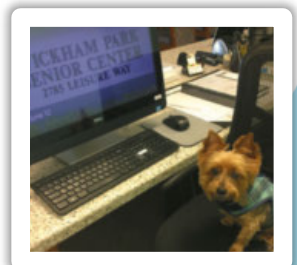
- Our **annual Craft/Rummage fundraising event** brought in about \$1,000. Thanks to Ginny Parker, Larry Parker, Janet Smith and our volunteers for the hard work they put into making this a huge success. As a result, we're planning to hold two events next year. **The next one will be on Saturday, February 15, 2025** and the second one will be sometime in the Fall. Watch for more details in January.
- Thanks to Janice Oppelt and her team for planning and delivering a fun-filled night, complete with witches, ghosts and goblins at our annual **Halloween Dinner/Dance**. I also want to thank Travel Expressions for sponsoring our event. We'll post photos soon.

What's coming up for November & December?

- **We have extended the application deadline to join our Board of Directors to Friday, November 15.** There are openings for 4 director positions. Please considering joining our Board.
- **Tags for gifts for seniors through the Salvation Army** will be available in the lobby beginning Monday, November 11. We ask that you return your gift(s), unwrapped with the tag attached, no later than end-of-day Wednesday December 4 as the Salvation Army will be picking them up on the morning of Thursday, December 5.
- Our **Annual Meeting Wine & Cheese Reception** will be held on **Friday, December 6 from 4:30 to 6:00 pm** (see details on page 12). **This event is FREE to all WPSC members** – we only ask that your sign up at the Front Desk so we can ensure we have enough wine and food on hand.
- Our **election for the Board of Directors** will be held the week of **December 9-13.**

Lastly, Thanksgiving is typically a time when we reflect and express our gratitude for the things we have in our lives. This past month has been especially hard for me because I lost my best friend of 16 years, Jake, on October 1st. He was also my favorite 4-legged WPSC front desk volunteer who kept me company at the Center during those awful times we were closed for COVID. While losing him has been difficult, it has also **reminded me of how grateful I am to have the Senior Center** to enjoy every day, along with the wonderful people and friends I've made here.

I am truly grateful for all our volunteers, program managers, sponsors and members who make Wickham Park Senior Center the place it is today. I hope you are too! Please be safe and enjoy the time you are able to spend with your family and friends during this upcoming Thanksgiving holiday season.



Jake volunteering at the front desk during COVID

Mission Statement

Our Mission is to provide a congenial and happy environment for seniors to enjoy activities, meet new friends, and attend educational programs. Furthermore, to provide a resource for obtaining assistance and guidance in times of need.

"There are no strangers here, only friends you have yet to meet!"



- **NOVEMBER 5:** General Election Day
- **NOVEMBER 15:** WPSC Board of Directors Registration Ends
- **DECEMBER 6:** Annual Meeting Wine & Cheese Reception 4:30 – 6:00 PM
- **DECEMBER 8:** Volunteer Holiday Event
- **DECEMBER 9-13:** Board of Directors Annual Elections

The WPSC Board of Directors meetings are held on the 2nd Monday of each month at 9:30 am. The next meeting will be **November 11 at 9:30 am in Room 117**. All WPSC members are welcome to attend.

NEEDED!

2025 Board of Directors

Our Wickham Park Senior Center Board is a working Volunteer Board responsible for establishing such rules and regulations or policies and procedures as deemed advisable concerning the operations, staffing and financing of the various committees.

This year the Board has openings for 4 Directors - each serving a 3-year term. **ALL MEMBERS IN GOOD STANDING ARE ELIGIBLE TO APPLY.**

Registration for completing Nomination Ballots has now begun, and the forms are available at the Front Desk. Registration will end on November 15, 2024. If you have any questions, please contact Janet Smith, Nominating Committee Chairperson or the President (Diane Weinzierl).

Welcome New Volunteers



Please welcome our 2024 New Volunteers:

- **Lynne Lake** – Kitchen
- **Linda Nelms** – Kitchen

If you'd like to join our volunteer team, please pick up a Volunteer

Application from the Front Desk.

Looking for a Worthy Charitable Donation Organization?

Wickham Park Senior Center is a 501(c)3 charitable organization and as such is eligible to receive charitable donations. We would like to thank the following people for their generous donations to WPCS in FY2024.



- Sharon Adams
- Kathleen & Andrew Cole
- Mitchell Hait
- Lawrence Nicola – in memory of Jacque Nicola
- Carol Patton (Kirby Family Fund)
- Jenny & John Potanos
- Gayle & Stephen Schanck
- Travel Expressions, Inc.

If you find you have extra funds in your charitable donations bucket anytime during the year, please consider donating to WPSC.

Are You Receiving the WPSC Monthly Newsletter via Email?

A link to this newsletter is emailed to all members by the first of every month. If you are not receiving these emails, please stop by the Front Desk and verify that we have your correct email address.

Wickham Park Senior Center is not equipped, nor intended to be a senior care facility. WPSC activities are geared toward independent adults who are able to manage their own care, decisioning making and safety. WPSC's insurance prohibits, and WPSC cannot be responsible for, the provision of physical assistance to individuals on the premises. If an adult companion is needed, the companion may participate in the activity if they desire, regardless of age, and must pay all fees associated with the activity. WPSC reserves the right to prevent persons from being on premises if the WPSC leadership believes that person would cause harm to themselves or others.

Suggestions Box Comments from Our Members

Thank you to all who have provided comments and/or suggestions to the WPSC Suggestion Box. Below are two recent suggestions we received and have responded to:



1. *Can you add a knitting or crochet group?*
Yes – there is a Senior Stitches class that started in October that meets on Thursdays at 10 am.
2. *Please look into the soap in the ladies room. You cannot get hands clean with the soap currently in the dispensers.*
I'm happy to report that we are in the process of changing out all of the restroom soap dispensers with a new, easier-to-use foam soap.

Thanks for the suggestions – keep them coming!!!!

WPSC Offers Free Lifetime Membership to Anyone Age 95 & Above

If you are age 95 or older, you are now entitled to **FREE Lifetime Membership** to Wickham Park Senior Center. Just stop by the Front Reception Desk, show them your ID and they will get your membership updated.



Also, if you're age 95 or older, you can receive a **FREE** bingo package to play bingo at WPSC. Show them your lifetime membership card and join us to play bingo.

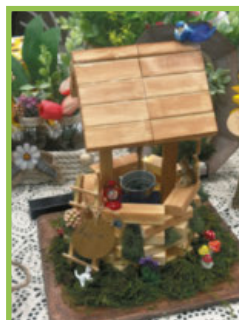
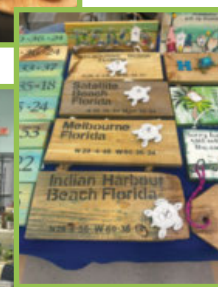


Need to Schedule an Appointment with SHINE?

The WPSC SHINE Group is available Tuesdays from 9:00 am to 12:00 Noon in Room 104. Anyone interested can call 407-514-1800 to schedule an appointment. No fee required!

Arts/Crafts & Rummage Sale Event of Sept. 28th

Thank you to all the vendors for such a great event at our arts and craft sale! We had a great turnout and great fun. Looking forward to next year!



The WPSC Travel Office is OPEN Monday—Friday, 9:00 am—1:00 pm
For more information and reservations, please call Wickham Park Travel at 321-425-5530.

Stetson Mansion Grand Tour

Date: November 9, 2024

Cost: \$179 PP

Time: Leaves WPSC at 9:45 am / Returns at 4:30 pm

Florida's Most Historic Home .The 1886 Stetson Mansion is Florida's most historic home, only Gilded Age mansion, and the largest, grandest, most innovative home ever built in Florida before 1900. Lunch at Cook's Restaurant.

Mount Dora Christmas

Date: December 6, 2024

Cost: \$69 PP

Time: Leaves WPSC at 3:00 pm / Returns at 10:30 pm

Celebrate the 2024 holidays against a backdrop of over two million sparkling lights in beautiful downtown Mount Dora. Visit the Mount Dora Christmas Walk for an old fashioned country Christmas. The streets come alive as they are transformed into a Christmas village.

St. Augustine's Nights of Lights

Date: December 11, 2024

Cost: \$75 PP

Time: Leaves WPSC at 12:30 pm / Returns at 9:00 pm

Depart Wickham Park in a 50-seat motorcoach arriving in St. Augustine at approximately 2:30 pm. Enjoy free time for shopping and dining on your own. Then meet at Visitors Center for 30-minute trolley ride through Christmas Lights.

2025

The Bikinis—A Musical Beach Party

Date: January 30, 2025

Cost: \$189 PP

Time: Leaves WPSC at 10:30 am / Returns at 5:30 pm

Everyone's favorite girl group from the 60s is back together again after 20 years and they're bringing back the sun, fun and all the great songs they sang down on the boardwalk in 1964. Includes Lunch.

LIPS

Date: February 9, 2025

Cost: \$145 PP

Time: Leaves WPSC at 11:00 am / Returns at 6:30 pm

Outrageous fun every Sunday afternoon. Join the ladies of Lips for the Ultimate Drag Brunch and a spectacular show. Includes unlimited Mimosas.

Sleuths Mystery Dinner Show

Date: March 16, 2025

Cost: \$169 PP

Time: Leaves WPSC at 3:30 pm / Returns at 9:30 pm

Join us for a comedy mystery show where you become the detective and solve the crime! You'll be treated to a hilarious 45-minute comedy mystery where all the clues are presented and you help solve the crime. Enjoy a delicious dinner as you formulate insightful (and not so insightful) questions for the live interrogation. It's improvisational comedy that will have you in side-splitting laughter! Fun prizes will be awarded to the successful Sleuths!

Titanic Tour & Dinner Gala

Date: March 22, 2025

Cost: \$169 PP (No Refunds)

Time: Leaves WPSC at 3:00 pm / Returns at 10:30 pm

The Titanic First Class Dinner Gala includes a Captain's cocktail party, a tour of the amazing Titanic: The Artifact Exhibition, a first-class dinner, and reenactments of the night of April 14, 1912. When you visit the Exhibition, you embark on a journey back in time to April 1912, when the ship embarked on its maiden voyage! You receive a replica boarding pass, assume the role of a passenger, and follow a chronological journey through life on the Titanic. The Exhibition features more than 300 artifacts and historical items as well as full-scale room recreation.

New Orleans

Date: March 31-April 5, 2025 (6 Days / 5 Nights)

Cost: \$778 Double / \$1,008 Single Occup. (Limit 5)

\$72 PP Insurance (Optional)

\$75 Due Upon Signing

Final Payment Due 1/23/2025

Time: Leaves WPSC at 8 am, then Buc-ee's at 200 World Commerce Parkway, Saint Augustine, FL

Incredible price includes:

- Motorcoach Transportation
- 5 nights lodging including 3 consecutive nights in the New Orleans area
- 8 Meals: 5 Breakfasts and 3 Dinners
- Guided Tour of New Orleans
- Admission to the National World War II Museum
- Guided Tour of a Louisiana Plantation
- Admission to Mardi Gras World
- Relaxing Riverboat Cruise on the Mississippi River
- Enjoy Historic New Orleans French Quarter, French Marketplace and visit the Nearby Casinos that are within walking distance

Pirates Dinner Adventure

Date: June 22, 2025

Cost: \$189 PP

Time: Leaves WPSC at 4:00 pm / Returns at 10:00 pm

When you set sail with the crew at Pirates Dinner Adventure, you have front-row seats to an epic, swashbuckling adventure that unfolds before your very eyes! But no show is complete without an audience, and at Pirates Dinner Adventure, our audience plays a special role in each performance. Every night, children, adults, and pirates of all ages have a chance to come on stage and take part in the action. Everyone is invited to cheer and sing along as our pirates fight and swoop through the air; accompanied by cannon blasts, pyrotechnics, and plenty of laughs. It's the world's largest interactive dinner show!



WPSC TRAVEL GIFT CERTIFICATE

Date Issued: _____ Voucher # _____

This certificate is non transferable and can only be used for trips sponsored by Wickham Park Senior Center Travel. Please present to the Travel Office when reserving one of our trips. Expires one year from issue date.

Signature: _____

VOUCHER

\$25

**Travel Gift Certificates are NOW AVAILABLE
in our Travel Office in Increments of \$5 to \$100!**

Great gift for birthdays, holidays, weddings and more. Membership is not required for Travel. Check out all of our upcoming trips on our website: <https://bcwpssc.org/travel>



Kathy Sorrell
Field Sales Agent
Licensed Insurance Agent

The Auto Club Group

4100 North Wickham Rd., Ste 101
Melbourne, FL 32935
321-775-4705 Office
321-427-0438 Mobile
ksorrell@acg.aaa.com

Insurance



WE APPRECIATE OUR ADVERTISERS!

They allow us to print
this bulletin. Thank you!

IF YOU LIVE ALONE

MDMedAlert!™

At HOME and AWAY!

✓ Ambulance ✓ Police ✓ Family
"STAY SAFE in the HOME YOU LOVE!"
✓ GPS & Fall Alert



800.809.3570

md-medalert.com

STARTING AT
\$19⁹⁵
/mo.



ADT-Monitored Home Security

Get 24-Hour Protection
From a Name You Can Trust

- Burglary
- Fire Safety
- Flood Detection
- Carbon Monoxide



SafeStreets

833-287-3502

Place Your Ad Here and Support our Community!

Instantly create and
purchase an ad with

AD CREATOR STUDIO



lpicommunities.com/adcreator



For ad info. call 1-800-477-4574 • www.lpicommunities.com

16-0351

CALENDAR OF EVENTS

NOVEMBER 2024

DUE TO THE WPSC HOLIDAY SHUTDOWN SCHEDULE, THERE WILL BE NO CLASSES/ACTIVITIES ON: WEDNESDAY, NOVEMBER 27; THURSDAY, NOVEMBER 28; AND FRIDAY, NOVEMBER 29.

ACTIVITY	SCHEDULE FOR NOVEMBER	NOTES
Bingo	Tuesdays & Fridays @ 11:15A—2:00P DOORS OPEN AT 10:00A	
Bob Ross Style Beginners Oil Painting with Hobo Bob (CRI)	3rd Thursday (November 21) @ 1:00—5:00P Sign-up Sheet at Front Desk—Limit 6 People per Class	
Bones and Balance	Mondays @ 10:00—11:00A; Register @ 9:45A	
Bridge: Beginner Class	For Virtual Classes please see our website at www.bcwpsc.org and click “Bridge” icon	
Chat	Fridays @ 9:30—11:00A	MEETS VIRTUALLY
Duplicate	On-Site Games: Mon., Wed., & Sat. @ 12:00—3:30P On-site Class: Wednesdays @ 11:00A—Noon Virtual Classes: Thursdays @ 12:15P on the BBO platform	Starting Nov. 2 On-Site Games 12:00-3:30 pm
Party Bridge	Wednesdays @ 12:30-4:00P	
Rogue	Tuesdays @ 12:15—4:00P	
Rubber	Thursdays @ 1:00-4:00P & Saturdays @ 12:30-3:30P	
Bunco	1st & 3rd Thursdays (November 7 & 21) @ 1:00—4:00P	
Chair Yoga	Tuesdays @ 3:00—4:00P	
Chefs for Seniors	Next Class November 14 @ 11:00A—12:30P Sign-up Sheet at Front Desk	
Color Pencil Portrait for Beginners	Wednesdays @ 9:30—11:00A Due to the holiday closure on Nov. 27, that class will be moved to Monday, Nov. 25	NO CLASSES ON NOV. 13 & 20
Cornhole Tournaments	November 10 & 24 @ 1:30P / Set-up & Practice @ 12:30P	
Euchre	Wednesdays @ 6:00—9:00P	
Fusion Glass Workshops	November 9, 2024 & January 11, 2025 @ Noon—3:00P Must Pay in Advance	NEW WORKSHOP
Hand & Foot	Mondays & Fridays @ 8:45A—Noon	
Jazzercise Lo	Mondays, Wednesdays & Saturdays @ 8:30—9:30A Fridays @ 8:30—9:15A	
Line Dancing	Tuesdays @ 4:15—5:30P	
Mahjong: American Chinese	Mondays @ Noon—3:30P / Thursdays @ 9:00A—Noon Wednesdays @ 1:00—4:00P	
Pinochle	Mondays & Fridays @ 12:30—4:30P	
Poker: Dealers Choice Friendly	Tuesdays & Fridays @ 11:30A—4:00P Mondays @ 1:00—4:00P	
Pool (Billiards)	Monday thru Friday @ 8:30A—4:30P	
QiGong-TaiChi	Mondays, Wednesdays & Fridays @ 8:30—9:30A	
Rummikub	Wednesdays @ 1:00-4:00P	
Senior Law	4th Friday of the Month @ 2:00—4:00P NO SEMINARS IN NOVEMBER & DECEMBER Sign-up Sheet at Front Desk	
Senior Stitchers	Thursdays @ 10:00A—Noon in Room 117 Sign-up Sheet at Front Desk	
SHINE	Tuesdays @ 9:00A—Noon	
Strength / Flexibility	Thursdays @ 9:30—10:30A	
Shuffleboard: Open Play	Thursdays @ 6:00P—8:30P; Saturdays @ 9:00A—Noon	
Tango Dance Class	Fridays @ 2:30—4:30P	
Technical Training & Education Class with Alison	3rd Friday (November 15) @ 2:30—4:30P	ON COMPUTERS & CELL PHONES

Program details and times are subject to change. Please check the daily schedule at the Front Desk for the latest information.

NEW UPDATES



NO BINGO ON NOVEMBER 29

TUESDAY & FRIDAY—Open to the Public!
Doors Open @ 10:00 am

Cards Sold @ 10:30 am – 11:15 am



Early Bird Starts @ 11:15 am

Join us and play 29 games including Early-Bird, 50/50, Winner-Take-All and Progressive games. Minimum package starts at \$6. Bingo payouts adjusted based on attendance. Kitchen open from 10:00 am to 11:30 am. For more information, contact **Brenda Clarson** at 321-258-8837.

Bones & Balance

Mondays @ 10:00—11:00 am

Cost: \$5.00 Members / \$7.00 Non-Members

Start your week with healthy aging exercise. Chairs, weights and exercise bands will be used to improve your core strength, posture and balance. All major muscles will get a workout. Certified personal trainer and certified group fitness instructor with 29 years of experience at Pro Health/Health First. Please wear comfortable shoes! For more information, contact **Marcia Luhn** at 321-543-6358.



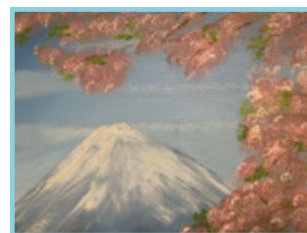
Bob Ross Style Beginners Oil Painting with Hobo Bob (CRI)

3rd Thursday: November 21 @ 1:00—5:00 pm

Cost: \$40.00 PP (Inc. All Supplies & WPSC Costs)

Come join us for a lot of fun!! Paint a beautiful landscape painting with us. Classes will be held on the third Thursday of each month; **NO SECOND CLASS IN NOVEMBER** due to Thanksgiving holiday. Please call the Center 321-425-5533 or come into the front desk and sign up.

For November, we'll be painting a beautiful landscape scene with **Mount Fuji, Japan**. This painting is good for beginners, and you should be quite pleased with your finished painting. This painting will bring out the inner artist you may not even know you have.



All supplies, brushes, canvas, and aprons are provided, and you'll walk away with a wonderful finished, unframed oil painting that you will be quite proud of. Remember to wear your painting clothes. The class is small, just six participants, so Hobo Bob (CRI) has plenty of time to work with you as you paint your masterpiece.

Duplicate Bridge

On-site Games: Mon., Wed. & Sat. @ 12:00—3:30P

Cost: \$7.00 Members / \$9.00 Non-Members

CLASSES:

On-site Class: Wed. @ 11:00A—Noon. Free to those playing Bridge after class—\$5.00 if not playing.

Online Virtual Classes: Thursdays @ 12:15P on the BBO platform / Online classes \$5.00

Duplicate bridge classes have resumed on-site Monday, Wednesday and Saturday. Virtual online classes are also available. For the online schedule, please check out the latest on the website under the Bridge tab. Contact **Pam Page** at 321-537-0907 or pam.page@bellsouth.net for bridge-related questions.

Party Bridge

NO CLASS ON NOVEMBER 27

Wednesdays @ 12:30—4:00 pm

Cost: \$5.00 Members / \$7.00 Non-Members

Please contact **Tom Sanders** at 321-960-1894 prior to coming to this bridge for the first time.

Rogue Bridge

NO GAME ON NOVEMBER 28

Tuesdays @ 12:15—4:00 pm

Cost: \$1.00 Members / \$3.00 Non-Members

Contact Patricia Rosenthal at 321-626-5419.

Rubber Bridge

Thurs. @ 1:00—4:00 pm & Sat. @ 12:30—3:30 pm

Cost: \$2.00 Members / \$4.00 Non-Members

Come on out for an afternoon of enjoyment at the bridge table. The Thursday point of contact is **Janet Walker** at 321-242-3173 and the Saturday point of contact is **Gayle Schanck** at 541-821-7070.

Bunco

1st & 3rd Thursday, **November 7 & 21** @ 1:00—4:00 pm

Cost: \$6.00 Members / \$8.00 Non-Members

Please join us every 1st and 3rd Thursday of the month for Bunco and arrive by 12:45 pm. Don't forget to bring your current membership card. Bunco ends about 3-3:30 pm. Please contact **Linda** at 321-549-9893 for more details and reservations (for set-up purposes). See you there for this fun activity. All you have to know is how to throw three dice.

Chair Yoga

Tuesdays @ 3:00—4:00 pm/Sign-in @ 2:45 pm

Cost: \$1.00 Members / \$3.00 Non-Members

This class is designed to help with overall wellbeing for the body and mind. Stretches and movements that will help increase mobility, flexibility, strength and balance. A focus on posture and breathing helps calm the mind, helps reduce stress and increase oxygen flow. Contact **Shelly Anderson** at 321-626-1969.

Chef for Seniors

Classes @ 11:00 am—12:30 pm

Cost: \$6.00 Members / \$8.00 Non-Members

- **November 14: Healthy Holidays**

Join **Chef Jillian** for a Cooking For Seniors Class. Each Class includes an interactive cooking demonstration, free recipes, cooking tips and food tasting. Please sign up at front desk to reserve your spot.

All proceeds are donated by Chef Jillian to The Children's Hunger Project, Brevard County's Backpack Program.

Sponsored by:  **MIS**
MOORE INSURANCE SOLUTIONS

and

 **Thrive**
Dr. Jaya Prakash, MD, MPH
COACHNATURALHEALTH, LLC

Color Pencil Portrait Class for Beginners

NO CLASSES ON NOVEMBER 13 & 20

Wednesdays @ 9:30—11:00 am

Cost: \$3.00 Members / \$5.00 Non-Members

NOTE: Due to the Thanksgiving closure on Wed., Nov. 27, we are moving the Nov. 27 class to Monday, Nov. 25 – same time and location.

Learn how to create a beautiful drawing from your favorite photograph! Bring your own portrait photograph to copy—Size: 5x8 (or other appropriate copy size). Supplies you will need to bring: Prismacolor Color Pencils, Watercolor Paper, Eraser, Pencil Sharpener (optional). For more information contact **Ann Armerding** @ 321-541-7027.

Cornhole Tournaments

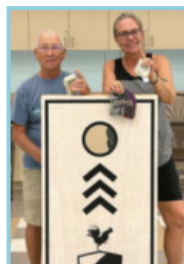
Sunday, **November 10 & 24** @ 1:30 pm

Setup & Practice Starting @ 12:30 pm

Cost: \$2.00 Members / \$4.00 Non-Members
(Annual Membership for 50+ is \$20)

Cornhole is welcome to all ages! Cornhole Tournaments will be held indoors at the Wickham Park Senior Center every 2nd and 4th Sundays (excluding conflict with holidays). Don't forget to scan your membership card at the front desk. We are happy to welcome Ann Sepulveda to our Cornhole family. Ann played very well and scored 2nd place on her first tournament!

September 22 Tournament (22 Players):

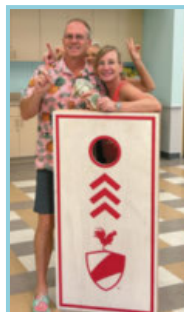


1st Place: Johnna & Richard

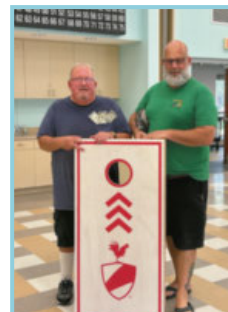


2nd Place: Ann & Dale

October 13 Tournament (14 Players):



1st Place: Jeremy & Karla



2nd Place: Steve & Don M.

In the near future, we plan on holding a tournament with a Buy-In of \$10. This will pay up to 3 places (depending on turn-out).

Cornhole Rules for Senior Center:

- Age 50 to 69: 27 ft. front edge to front edge; (Distance of Boards)
- Age 70 to 79: 25 ft. front edge to front edge
- Age 80 Plus/Non-Ambulatory: 23 ft. front edge to front edge
- Age 90 Plus: 21 ft. front edge to front edge

Starting Jan. 1st, 2025, there will be a new Cornhole cost (see below). This will pay 2-3 places (depending on turn-out). The decision to change the price is due to the increase of players. The pay-outs will be more respectful towards the winners. This is a blind draw tournament style, which should help even out the playing field.

- Members: \$6 (\$5 to tournament, \$1 to the Center)
- Non-Members: \$8 (\$5 to tournament, \$3 to the Center)

For any questions, please contact **Jay Koeller** at 321-794-6400 (jkoeller18@gmail.com) or **Amy Longtin** at 321-205-5161 (ajgclrt@yahoo.com).

Euchre

NO TOURNAMENT ON NOVEMBER 27

Wednesdays @ 6:00—9:00 pm

Cost: \$5.00 Members / \$7.00 Non-Members

Members must scan their card when entering and non-members must sign in.

Euchre has been a great success and as our Euchre family continues to grow, it is now common to have 5-6 tables in action. We try to promptly start by 6:00 pm which means we should be signed in no later than 5:50 pm to allow time to set up the correct 3/4 player table configuration and draw for your seats. The payout structure has been altered so more people are sharing the prize pool. That means if there are up to 30 players even eighth place takes home a piece of the purse. For more information, contact **Jay Koeller** at 321-794-6400 (jkoeller18@gmail.com).

Hand & Foot Card Game

Mondays & Fridays 8:45 am—Noon / Setup @ 8:30 am

Cost: \$1.00 Members / \$3.00 Non-Members

Join this group of friendly and competitive players for a time well spent. Please contact **Beverly Morgan** at 303-458-8273 for more information.

Fusion Glass Workshop

November 9, 2024 & January 11, 2025 @ Noon—3:00P

Cost: \$70 PP (Includes All Supplies & Kiln-Firing of Projects)

- **November 9: Holiday Ornaments**
- **January 11: Suncatcher Chimes**

Join us to explore an unique art medium that you might just get addicted to. No “artistic/creative” skills are required to make these projects out of fusible glass. Each class is designed to be fun and no stress. Each workshop has a 4 person minimum and 16 person maximum, so grab your seats early and invite your friends to sign up too. For safety reasons, Closed-toe shoes required. For questions, call or text Lauren Richeson at 310-483-3229. Classes must be reserved and paid for in advance via the website: <https://laurenricheson galleriesstore.square.site/>



Jazzercise Lo

Mondays, Wednesdays & Saturdays @ 8:30-9:30 am

Fridays @ 8:30-9:15 am

Members: \$50.00/Month & Walk-ins \$10.00

Non-Members: \$79.00/Month & Walk-ins \$12.50

Join us for a fun and energized Jazzercise Lo class. Dance away those extra calories using Low Impact moves that yield MAXIMUM results! We use muscles, not momentum, to get a total body workout without the impact on your joints. For more information, contact **Ginny Parker** at 321-698-0445.

Line Dancing

Tuesdays @ 4:15—5:30 pm

Cost: \$6.00 Members / \$8.00 Non-Members

It's hard to believe how quickly the year is rolling along. The students of Line Dancing for Fun and Exercise



would love to wish everyone in our beautiful community a healthy happy Holiday Season. I would personally like to give Thanks to all the tireless volunteers and community workers who work to keep our WPSC a beautiful, safe, FUN place to gather, make new friends, and spend time with others. Thank you students, for giving me the privilege to laugh and teach you each and every Tuesday afternoon for the past fifteen years. Blessings to ALL this beautiful Holiday Season. Much Love, Sue Duncan and Family. **Sue Duncan**, Professional Instructor Choreographer for over 60 years. 321-505-0846.

Mahjong

American: NO CLASS ON NOVEMBER 28

Mondays @ Noon—3:00 pm & Thursdays @ 9:00 am—Noon

Cost: \$1.00 Members / \$3.00 Non-Members

Chinese: NO CLASS ON NOVEMBER 27

Wednesdays @ 1:00—4:00 pm

Cost: \$5.00 Members / \$7.00 Non-Members

Mahjong is an activity that fosters friendly comradery and stirs the brain. Come join the fun! Contact **Patricia Rosenthal** at 321-626-541 (American) or **Linda Milo** at 321-506-2672 (Chinese).

Pinochle

NO GAME ON NOVEMBER 29

Mondays & Fridays @ 12:30—4:30 pm

Cost: \$1.00 Members / \$3.00 Non-Members

Contact **Bill Mueller** at 321-242-4999 (Mondays) or **Cathy Decker** at 321-432-7813 (Fridays).



FREE
AD DESIGN
with purchase
of this space

CALL 800-477-4574

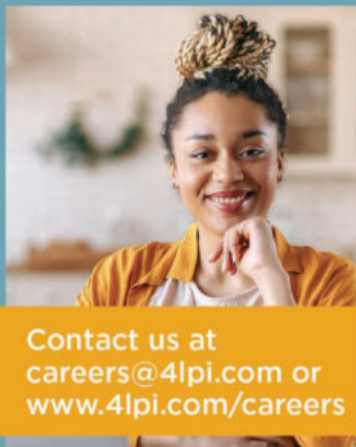
**SUPPORT OUR
ADVERTISERS!**

WE'RE HIRING!
AD SALES EXECUTIVES



**BE YOURSELF.
BRING YOUR PASSION.
WORK WITH PURPOSE.**

- Paid training
- Some travel
- Work-life balance
- Full-Time with benefits
- Serve your community



Contact us at
careers@4lpi.com or
www.4lpi.com/careers

LET'S GROW YOUR BUSINESS

Advertise in our Newsletter!

CONTACT ME
Rich Fernbach

rfernbach@lpicommunities.com

(800) 477-4574 x3675

Poker (Dealers Choice)

NO GAME ON NOVEMBER 29

Tuesdays & Fridays @ 11:30 am—4:00 pm

Cost: \$1.00 Members / \$3.00 Non-Members

Contact **Bill Seigel** at 813-416-0428.

Poker (Friendly)

Mondays @ 1:00—4:00 pm

Cost: \$1.00 Members / \$3.00 Non-Members

Attention: Players Needed! Pennies Only. Call ahead to attend. Contact **Vinnie Germann** at 321-253-6155.

Pool (Billiards)

Monday thru Friday @ 8:30 am—4:30 pm

Tournaments: 2nd Wednesday of Every Month

Cost: \$1.00 Members / \$3.00 Non-Members

Plus \$.50 per Day or \$2.00 per Week

YE OL Pool Room 8-Ball Tournament 10/16/24 Results:

1st: Barry Beddow 3rd: Boomer McConnell

2nd: Dave Wyatt 4th: Mickey Ferguson

Next tournament is November 13. Questions?

Contact **Wally Topinko** at 321-622-4977.

QiGong-TaiChi

NO CLASSES ON NOVEMBER 27 OR NOVEMBER 29

Mon., Wed., & Fridays @ 8:30—9:30 am

Cost: \$5.00 Members / \$7.00 Non-Members

For over 50 years, scientists at the Institute for Aging Research, an affiliate of Harvard Medical School, have been studying what causes falls among the elderly, and how to prevent them. One of the most promising interventions is TaiChi. It offers senior practitioners inner peace and improves balance, flexibility and mental agility. It also reduces death due to falls and injury among older adults. We focus more on the Healing Art of QiGong of TaiChi. **Laura Parsons**, Certified Instructor at 321-474-5374.

Rummikub

NO GAME ON NOVEMBER 27

Wednesdays @ 1:00—4:00 pm

Cost: \$1.00 Members / \$3.00 Non-Members

Rummikub is a tile-based game combining elements of the card game rummy and mahjong. It's an easy game to play and if you don't know how to play, our group will be happy to teach you. Come join us for a fun afternoon. Contact **Peggy Miles** at 732-688-6268.

Senior Law

4th Friday of the Month @ 2:00—4:00P

NO SEMINARS IN NOVEMBER & DECEMBER

Cost: Free to All WPSC Members

The Slonim Law Firm invites you to attend a FREE seminar and question/answer session on the 4th Friday of each month at WPSC Room 117. Topics:



SLONIM LAW

- Last Will & Testament & Trusts
- Durable Power of Attorney & Healthcare Directives
- Digital Assets
- Medicaid and Asset Protection Options
- General Dementia Issues
- Guardianships
- Probate Matters
- Living Wills

Seating is limited. Please sign up at the front desk. Any questions, call the Law office at 321-757-5701.

Senior Stitchers

Thursdays @ 10:00 am—Noon in Room 114

NO CLASS ON NOVEMBER 28

Cost: \$1.00 Members / \$3.00 Non-Members



Would you like to learn to Knit or Crochet or do you already know how to Knit or Crochet? If so, please join us for a morning

of friendship and pleasant conversation while learning new skills and stitches while helping each other to share and improve our skills. What to Bring:

- If you are already experienced, please bring a WORK IN PROGRESS that you'd like to work on.
- If you're a beginner, please bring some worsted yarn and some Size 8 knitting needles or a Size G crochet hook.

Please sign up at the Front Desk. For more information contact **Laurie Liguori** at 917-882-9898.

Shuffleboard

Open Play: Sat. @ 9:00 am & Thurs. @ 6:00 pm

Cost: \$1.00 Members / \$3.00 Non-Members

For more information on learning how to play or participating in tournaments, call **Tom Winkelspecht** at 321-446-3283 or email: tawinkii@me.com

WICKHAM PARK SENIOR CENTER**2024
ANNUAL MEETING***Wine & Cheese
Reception***Friday, December 6, 2024****4:30—6:00 PM****FREE to All WPSC Members**

Please join us for our Annual Meeting Wine & Cheese Reception to learn more about what's happening at WPSC.

- 2024 Accomplishments
- How your money was spent in 2024
- Meet your nominees for the 2025 Board of Directors

All attendees will have a chance to win one of several raffle prizes, including a **\$25 Gift Card**.

To ensure we have enough food and beverages on hand, as well as a quorum, please sign-up at the sheet available at the front desk no later than **Monday, December 2**.

Social Tango, Introduction to Argentine Tango

NO CLASS ON NOVEMBER 29

Fridays @ 2:30—4:30 pm

Monthly Cost: \$45 Members / \$48.00 Non-Members

Come out and enjoy the art of Argentine Tango, where students will learn to dance tango step-by-step. No partner is necessary as the basic techniques can be applied for the follower or the leader. Students will experience in-part the health benefits of Argentine tango including overall improved well-being, walking, posture and coordination. At only \$45.00 for four weeks of Tango, (you decide which four weeks will work for you and we can accommodate flexible travel plans of students as well). Any questions, contact **Delores or Walt** at 850-212-7963.

Strength/Flexibility

NO CLASS ON NOVEMBER 28

Thursdays @ 9:30—10:30 am

Cost: \$4.00 Members / \$6.00 Non-Members

Fitness Unlimited by Design presents a class you won't want to miss and has everyone talking! This class will introduce greater strength and flexibility that

your body will love and you will love going to. It also helps with posture and alignment of the spine, helps us stay limber, agile, strong and keeps our balance in check. We work on core, arm and leg strength. Come join us, no need to sign up. For more information, contact **Susie Salvetti** at 321-626-0282.

Technical Training & Education on Computer & Cell Phone

3rd Friday of the Month Nov. 22 @ 2:30—4:30 pm

Cost: \$0 Members / \$3.00 Non-Members

Phone/Tablet Beginner: 2:30—3:15 pm

Phone/Tablet Interim/Advanced: 3:15—4:00 pm

Laptop computer: 4:00—4:30 pm

(iPad/ tablet questions taken during any class)

Try one or stay for all 3! Room 117 end of the hall, 18-person limit. Use the sign-up sheet on the front table or text /call **Alison** at 954-376-2444 to confirm.

Exercise your brain in a fun, interactive hour with a relevant and patient approach. For more personalized assistance, unsure of your level, or for desktop computers, don't hesitate to contact Alison.



**SUPPORT THE
ADVERTISERS**
that Support our
Community!

OUR SPONSORS

The Officers and Membership of Wickham Park Senior Center appreciate the continued support of our many Sponsors. As an all volunteer run organization, their continued financial support allows us to offer Activities and Social events for our members.

Diamond Level Sponsors



Gold Level Sponsors



Meet & Greet Sponsors

Our monthly Meet & Greets with our sponsors have started back up on Tuesday and Friday mornings from 9—11:00 am. Each sponsor will have a table set up just outside the front door or inside the lobby to provide you with information, fun giveaways, and someone knowledgeable to answer your specific questions. Please mark your calendars and come up to meet them.

- Friday, November 1: Kindred Hospitals ARU
- Friday, November 1: Travel Expressions
- Tuesday, November 5: Physician Partners of America
- Tuesday, November 12: Cigna Insurance
- Friday, November 15: United Health Care
- Friday, November 15: Rosanova Eye
- Friday, November 22: VIP America

Welcome

New Members in September

Anderson, Barbara	Kater, Valarie
Anderson, Janet	Kerekes, John
Beaulieu, Paul	Kishter, Harvey
Brenn, Ellen	McDaniels, Sarah
Carpenter, Jill	Melillo, Marie
Carrasco, David	Miller, Cristin
Charbonneau, Marti	Mitchell, Karen (Hoop)
Clymer, Bear	Morton, Freda
Cobb, Jim	Officer, Marie
Colleran, John	Parsons, Kathleen
Connolly, Elizabeth	Pruitt, Elaine
Corallino, Nancy	Rant, Patricia
Cuello, Edward	Rebholz, Debby
Deo, Chadd	Robinson, Catherine (Cathy)
DePriest, Elisha	Saldana, David
DePriest, Trudy	Salvati, Pamela
Drabick, Michael	Semashko, Norma
Drabick, Susan	Sevilla, Elsie
Ellis, G.R. (Jack)	Shelton, Dorothy
Fesmire, Judith	Sliski, Jeanette
Godfrey, Gena	Starrak, Michael
Green, Petra	Upton, Ann D
Grubka, Dinah	Walters, Melinda
Hartford, Sharon	Walters, Robert
Jander, Carol	White, Carolyn (Kitty)
Jonelis, Diane	Litchfield, Lynne (Marilyn)
Joy, Charles	

WPSC Email Addresses

DIRECTORY	EMAIL
WPSC President	president@bcwpsc.org
WPSC Secretary	secretary@bcwpsc.org
WPSC Treasurer	treasurer@bcwpsc.org
WPSC Scheduling	scheduling@bcwpsc.org
WPSC Information	info@bcwpsc.org
WPSC Webmaster	webmaster@bcwpsc.org
Travel Office	travel@bcwpsc.org
Front Desk Reception	reception@bcwpsc.org
Bridge Club	bridge@bcwpsc.org
Newsletter Editor	news@bcwpsc.org
Systems Administrator	itadmin@bcwpsc.org

Wickham Park Senior Center Holiday Closures for 2024

To enable our volunteers to spend more time with their families during the upcoming holiday season, Wickham Park Senior Center will be closed on the following dates:

- **Thanksgiving Holiday:**
 - Wednesday, Nov. 27, 2024 (Day before Thanksgiving)
 - Thursday, Nov. 28, 2024 (Thanksgiving Day)
 - Friday, Nov. 29, 2024 (Friday after Thanksgiving)
- **Christmas Holiday:**
 - Tuesday, Dec. 24, 2024 (Day before Christmas)
 - Wednesday, Dec. 25, 2024 (Christmas Day)
 - Thursday, Dec. 26, 2024 (Day after Christmas)
- **New Year's Holiday:**
 - Wednesday, January 1, 2025 (New Year's Day)

Meet Our Staff

Officers

President:	Diane Weinzierl
Vice President:	Gary McGuire
Secretary:	Ina Fritsch
Treasurer:	Colleen Barneman

Directors

Celeste Garcia	Ginny Parker
Beverly Morgan	John Potanos
Janice Oppelt	Janet Smith
Pam Page	Rosann Testa

Staff

IT Systems Admin:	John Efird
Webmaster:	Maureen Reeder
Sunshine:	JoAnn Efird
Newsletter:	Nilda Rosario

Deadline for copy submission to the newsletter is the **15th of each month**. Please email copy to:
news@bcwpsc.org

COMMENTS?

We value your opinion!

There's a SUGGESTION BOX in the lobby for your feedback or ideas on how we can enhance the experience at the WPSC!



**When You Have A Plan
You Can Afford to Relax
Helping Families With**

Estate/Life Planning
Guardianship & Probate
Medicaid Asset Preservation



Slonim Law

321.757.5701 | Slonimlaw.com

Code: WPSC



Say Yes to New Adventures

CMS Rating



Offering: Independent Living • Skilled Nursing Care
Individualized Rehabilitation • Therapy Services

321-452-1233

TTD# 800-545-1833 ext. 359
Language Assistance Services 562-527-5255



**COURTENAY
SPRINGS
VILLAGE**

1200 S Courtenay Pkwy.
Merritt Island, FL 32952

SNF# 11070961

*Brownlie &
Maxwell*

Funeral Service & Crematory

(321) 723-2345

www.brownliemaxwell.com

1010 Palmetto Ave.
Melbourne, FL 32901



**ELITE CARE
PHARMACY**

A MEMBER OF
*The Medicine
Shopper*
FAMILY

**Prioritize your health and let us
TAKE CARE OF YOU!**

- ✓ Over 50 medications at discounted prices - Starting at \$2.00
- ✓ Same Day Home Delivery
- ✓ Human & Pet Medication Compounding
- ✓ Compliance Packaging - Pill Pouches
- ✓ 24/7 Emergency Prescription Fill Voicemail
- ✓ Medication Flavoring
- ... and MUCH MORE!

CALL US TODAY!

321-608-4949

Dr. Zuheily Vélez - PharmD
Pharmacy Manager | Owner

3680 N Wickham Rd Ste C Melbourne, FL 32935
www.EliteRxFL.com



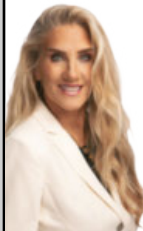
**WATERMAN
REAL ESTATE**

Linda Cass

Parishioner

321-704-5203

The.Cass.house@gmail.com
lindacass.spacecoastmls.com



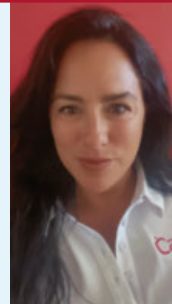
CarePlus
HEALTH PLANS

Kristine Quattrone
Licensed Insurance Agent

Brevard & Indian River County

Kquattrone@careplus-hp.com

321-326-4033



**NEVER MISS
OUR NEWSLETTER!**

SUBSCRIBE

Have our newsletter
emailed to you.



VISIT WWW.MYCOMMUNITYONLINE.COM



For ad info. call 1-800-477-4574 • www.lpicommunities.com

16-0351