

DECEMBER 2025

2785 Leisure Way
Melbourne, FL 32935
(321) 255-4494

Monday-Friday: 8:30 am–4:30 pm
Saturday: 9:30 am–12:30 pm
Sunday: CLOSED
www.bcwpsc.org



Friendship Flyer

President's Message

Wow – it's hard to believe that 2025 is so quickly coming to a close. I want to remind you of all the final activities we have going on as we close out the year:

- **Ornament Contest** – Don't forget to bring in your hand-made Ornament between December 1 and December 5 to add to our tree. Voting for your favorite ornament will take place the week of December 8-12. The winners will be announced on December 15. (See page 2 for additional details.)
- **Annual Meeting** – Please be sure to join us for our Annual Meeting on Wednesday, December 3 from 4:00 to 5:00 pm. We will be serving Hot Chocolate and Holiday Cookies. The meeting is free to all members - just sign up at the front desk so we can be sure to have plenty of food and beverages on hand. (See page 3 for additional details.)
- **Salvation Army Gift Tags** – If you picked up a Salvation Army gift tag for seniors, please remember to return your gift(s), unwrapped and with the tag attached, no later than noon on Thursday, December 4. The Salvation Army will be picking them up from the Center in the afternoon of December 4.
- **Save-the-Date of Friday, February 13, 2026 for our "That's Amore" Valentine's Dinner/Dance.** More details will be available in our January newsletter.

As we celebrate this holiday season, please remember to thank all of our wonderful Volunteers who dedicate their time each week to keep this Center operating. Also, be sure to thank your Program Managers who also devote so much of their time to ensure our programs run smoothly.

Finally, just a reminder that the Center will be closed for the entire week of Christmas – December 22 through December 28. We will re-open on Monday, December 29. We will also be closing at 12:30 on Wednesday, December 31 and all day Thursday, January 1 for the New Year Holiday. We will re-open on Friday, January 2.

Merry Christmas and Happy New Year to you and your family from all of us at Wickham Park Senior Center.



Diane Weinzierl

Officers

President: Diane Weinzierl
Vice President: Janice Oppelt
Secretary: Lori Ebbensgard
Treasurer: Colleen Barneman

Directors

Celeste Garcia Ginny Parker
Karen Bostwick Janet Smith
Beverly Morgan Sharon Sneary
Pam Page Rosann Testa

Staff

IT Systems Admin: John Efird
Webmaster: Maureen Reeder
Sunshine: JoAnn Efird
Newsletter: Nilda Rosario

Directory

President: president@bcwpsc.org
Secretary: secretary@bcwpsc.org
Treasurer: treasurer@bcwpsc.org
Scheduling: scheduling@bcwpsc.org
Sponsorships: sponsorship@bcwpsc.org
Information: info@bcwpsc.org
Webmaster: webmaster@bcwpsc.org
Travel Office: travel@bcwpsc.org
Front Desk: reception@bcwpsc.org
Bridge Club: bridge@bcwpsc.org
Newsletter: news@bcwpsc.org
IT Admin: itadmin@bcwpsc.org

Contents

President's Message 1
Important News 2-3
Calendar of Events 4-5
Activities & Games 6-11
Travel News 12-13
Our Sponsors 14
In Every Issue 15

MISSION STATEMENT

Our Mission is to provide a congenial and happy environment for seniors to enjoy activities, meet new friends, and attend educational programs. Furthermore, to provide a resource for obtaining assistance and guidance in times of need.

"There are no strangers here, only friends you have yet to meet!"



IMPORTANT NEWS

MONTHLY BOARD MEETING

The WPSC Board of Directors meetings are held on the 2nd Monday of each month at 9:30 am. The next meeting will be **December 8 at 9:30 am, Room 117**. All WPSC members are welcome to attend.

LOOKING FOR A WORTHY CHARITABLE DONATION ORGANIZATION

Wickham Park Senior Center (WPSC) is a 501(c)3 charitable organization and as such is eligible to receive charitable donations. We would like to thank the following people for their generous donations to WPSC in FY2025:

- Sharon Adams
- Janet & Vaughn Eastman
- Maria Luhn
- Carol Patton
- Gayle Schanck
- GFWC-Melbourne Woman's Club
- In Memory of Tim Olsen from Friends & Family
- Travel Expressions

Thank You
for your
donation!

Please consider donating to WPSC, if you find you have extra funds in your charitable donations bucket.

The Wickham Park Senior Center *Ornament Contest*

Rules:

December 1-December 5

- Bring your homemade ornament(s) to the WPSC Front Desk. Your ornament(s) will be given a number and placed on the tree.
- Ornaments must be family-friendly and cannot exceed 5 inches in height.
- Ornaments may be made out of any material. A fillable ornament ball can be used as part of your creation.
- All ornaments must be submitted with a hook or ribbon for hanging on the tree.
- Up to two (2) ornaments may be entered per person.

December 8-December 12

- Vote for your favorite ornament.

December 15

- Winners will be announced and contacted.
- Prizes will be awarded for 1st, 2nd, and 3rd place.



Wickham Park has a 15 mph speed limit, which includes the Senior Center and Community Center. Speed bumps were installed to slow down the traffic in an effort to protect all wildlife, including the gopher tortoises. We ask all members to please adhere to the speed limit. Thank you!

WPSC OFFERS FREE LIFETIME MEMBERSHIP TO ANYONE AGE 90 & ABOVE (Effective August 1, 2025)



If you are age 90 or older, you are now entitled to FREE Lifetime Membership to Wickham Park Senior Center. Just stop by the Front Reception Desk, show them your ID and they will get your membership updated. Member activity participation fees (usually \$1, but can vary depending on the activity) must still be paid to the program manager for each activity. Also, if you're age 95 or older, you can receive a FREE Bingo Package to play Bingo at WPSC. Show them your lifetime membership card and join us to play Bingo.



Help support the Wickham Park Senior Center by volunteering for the following open positions:

1) Computer Support Technician to assist with Windows Computers and associated equipment. Contact **John Efird, IT Administrator** at **321-704-0520** or itadmin@bcwpsc.org.

2) Sponsorship Coordinator to promote sponsorship opportunities and coordinate activities with our Sponsors. Contact **Diane Weinzierl, President**, at **321-591-3966** or president@bcwpsc.org.

IMPORTANT NEWS



WICKHAM PARK SENIOR CENTER

2025 ANNUAL MEETING

Hot Chocolate Bar & Cookies



WEDNESDAY : DECEMBER 3 : 4-5:00 PM

FREE TO ALL WPSC MEMBERS

Please join us for our Annual Meeting Hot Chocolate Bar & Cookies Reception to learn more about what's happening at WPSC.

- 2025 Accomplishments
- How your money was spent in 2025
- Meet your nominees for the 2026 Board of Directors

All attendees will have a chance to win one of several raffle prizes, including a **\$25 Gift Card**.

To ensure we have enough food and beverages on hand, as well as a quorum, please sign-up at the sheet available at the front desk no later than **Friday, November 28**.



CALENDAR OF EVENTS

DECEMBER 2025

ACTIVITIES	MON	TUES	WED	THURS	FRI	SAT	SUN
Bingo (Doors Open at 10:00a)		11:15–2:00p	No Bingo on Dec. 23 & 26		11:15–2:00p		
Bob Ross Style Beginners Oil Painting with Hobo Bob (CRI) (3rd Thursday)				12/18 1:00–5:00p			
Bones & Balance (Register at 9:45a)	10:00–11:00a						
Bridge: Beginner Class	For Virtual Classes please see our website at www.bcwpsc.org and click "Bridge" icon						
Chat (Virtual)					9:30–11:00a		
Duplicate On-Site:	Noon–3:30p		Noon–3:30p			Noon–3:30p	
Beginner Class			9:00–1100a	10-Week Class (\$100.00) Starting October 1			
Intermediate Class	10:00–Noon	Starting November 3 - \$5.00 Each Class					
Duplicate Virtual Class / BBO Platform				12:15p			
Party Bridge			12:30–4:00p				
Rogue		12:15–4:00p					
Rubber				1:00–4:00p		12:30–3:30p	
Bunco (1st & 3rd Thursdays)				12/4 & 12/18 1:00–4:00p			
Chair Yoga		3:00–4:00p					
Chefs for Seniors Topic: TBD				Date TBD 11:00–12:30p			
Color Pencil Portrait for Beginners			9:40–Noon				
Cornhole Tournaments (2nd & 4th Sundays)					(12:30p Set-up & Practice)		12/7 & 21 1:30p
Euchre			6:00–9:00p	Last Game for the Year will be December 17 Will Resume on January 7			
Fusion Glass Workshop with Lauren						12/13 Noon–3:00p	
Hand & Foot	8:45–Noon				8:45–Noon		
Jazzercise Lo	8:30–9:30a		8:30–9:30a		8:30–9:15a		
Line Dancing		4:15–5:30p	No Line Dancing on December 9, 23, & 30				
Mahjong: American	Noon–3:30p			9:00–Noon			
Chinese			1:00–4:00p				
Pinochle	12:30–4:30p				12:30–4:30p		
Poker: Dealer’s Choice		11:30–4:00p				11:30–4:00p	
Friendly	1:00–4:00p						

CALENDAR OF EVENTS

DECEMBER 2025

ACTIVITIES	MON	TUES	WED	THURS	FRI	SAT	SUN
Pool (Billiards)	8:30–4:30p	8:30–4:30p	8:30–4:30p	8:30–4:30p	8:30–4:30p	9:30–12:30p	
	Tournament: 2nd Wednesday of the Month December 17 @ 11:00 am						
QiGong-TaiChi	8:30–9:30a		8:30–9:30a		8:30–9:30a		
Rummikub			1:00–4:00p				
Senior Law (4th Friday of the Month)	No Workshops in December Next Workshop: January 23, 2026				2:00–4:00p		
Senior Stitchers				10:00–Noon			
SHINE		9:00–Noon	Call for appointment first.				
Strength / Flexibility	Class is Full – Contact PM for wait list.			9:30–10:30a			
Shuffleboard	9:00–11:00a			6:00–8:30p		9:00–Noon	
	Shuffleboard State Tournament: December 22 & 23 – Doubles M/L – 8 am–6 pm						

REMINDER: THE WICKHAM PARK SENIOR CENTER WILL BE CLOSED: MONDAY, DECEMBER 22 THRU SUNDAY, DECEMBER 28; WEDNESDAY, DECEMBER 31 AT 12:30 PM; AND THURSDAY, JANUARY 1, 2026. PLEASE CHECK WITH YOUR PROGRAM MANAGER FOR CLOSURE SCHEDULES DURING THIS TIME.

Brownlie & Maxwell
Funeral Service & Crematory
(321) 723-2345
www.brownliemaxwell.com
1010 Palmetto Ave.
Melbourne, FL 32901

CIPS MRP ABR REALTOR

WATERMAN
REAL ESTATE

Linda Cass
Parishioner
321-704-5203
The.Cass.house@gmail.com
lindacass.spacecoastmls.com

Helping you select the Medicare Health Plan that's right for you!



PlanAdvisors
FLORIDA

**Kathryn Burgess
& Austin Kempa**

Licensed Insurance Brokers

321-507-4710 (TTY 711)
planadvisorsbrevard@gmail.com

2555 N. Courtenay Pkwy. Unit 32
Merritt Island, FL 32953

Serving Brevard County for 20+ Years!

ADVERTISE HERE
to reach your community



Call 800-477-4574

IF YOU LIVE ALONE

MDMedAlert!™
At HOME and AWAY!

STARTING AT
\$19⁹⁵
/mo.

✓ Ambulance ✓ Police ✓ Family

"STAY SAFE in the HOME YOU LOVE!" ✓ GPS & Fall Alert



800.809.3570

md-medalert.com



ACTIVITIES & GAMES



TUESDAY & FRIDAY—Open to the Public!

NO BINGO ON DECEMBER 23 & 26

Doors Open @ 10:00 am

Cards Sold @ 10:30 am–11:15 am

Early Bird Starts @ 11:15 am



Effective January 2025, we will no longer accept anything larger than \$20 bills.

Join us and play 29 games including Early-Bird, 50/50, Winner-Take-All and Progressive games. Minimum package starts at \$6. Bingo payouts adjusted based on attendance. Kitchen open from 10:00 am to 11:30 am. For more information, contact Brenda Clarson at 321-258-8837.

Bones & Balance

Mondays @ 10:00–11:00 am

Cost: \$5.00 Members / \$7.00 Non-Members



Start your week with healthy aging exercise. Chairs, weights and exercise bands will be used to improve your core strength, posture and balance. All major muscles will get a workout. Certified personal trainer and certified group fitness instructor with 29 years of experience at Pro Health/Health First. Please wear comfortable shoes! For more information, contact **Marcia Luhn** at 321-543-6358.

Bob Ross Style Beginners Oil Painting with Hobo Bob (CRI)

3rd Thursday: December 18 @ 1:00–5:00 pm

Cost: \$50.00 PP (Includes All Supplies & WPSC Costs)

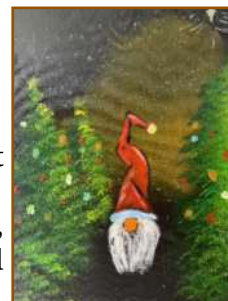
Sign-Up Sheet at Front Desk—Limit 6 People per Class



These classes are easy and fun!! Paint a beautiful landscape painting with us. Classes will be held on the third Thursday of each month; an overflow class will be held on the fourth Thursday of the month if there is enough interest. Please call the Center

321-425-5533 or come into the front desk and sign up.

For December we'll be painting Gnome Christmas. This painting is good for beginners, and you should be quite pleased with your finished painting. This painting will bring out the inner artist you may not even know you have. All supplies, brushes, canvas, and aprons are provided, and you'll walk away with a wonderful finished, unframed oil painting that you will be quite proud of. Remember to wear your painting clothes. The class is small, with just six participants, so Hobo Bob (CRI) has plenty of time to work with you as you paint your masterpiece.



Duplicate Bridge

On-site Games: Mon., Wed. & Sat. @ 12:00–3:30P

Cost: \$7.00 Members / \$9.00 Non-Members

CLASSES:

- **Beginner Bridge Class: Wednesdays @ 9:00–11:00 am 10-Week Class (\$100.00) Starting October 1**
- **Intermediate Bridge Class: Mondays @ 10:00 am–Noon Starting November 3 @ \$5.00 each class**
- **Online Virtual Classes: Thursdays @ 12:15P on the BBO platform / Online classes \$5.00**



On-site Duplicate bridge games are on Mondays, Wednesdays and Saturdays. Virtual online classes are also available. For the online schedule, please check out the latest on the website under the Bridge tab. Contact **Pam Page** at

321-537-0907 or pam.page@bellsouth.net for bridge-related questions.

ACTIVITIES & GAMES

Party Bridge

Wednesdays @ 12:30–4:00 pm

Cost: \$5.00 Members / \$7.00 Non-Members

Please contact **Tom Sanders** at 321-960-1894 prior to coming to this bridge for the first time.

Rogue Bridge

Tuesdays @ 12:15–4:00 pm

Cost: \$1.00 Members / \$3.00 Non-Members

Contact Patricia Rosenthal at 321-626-5419.

Rubber Bridge

Thursdays @ 1:00–4:00 pm & Saturdays @ 12:30–3:30 pm

Cost: \$2.00 Members / \$4.00 Non-Members

Come on out for an afternoon of enjoyment at the bridge table. The Thursday point of contact is **Janet Walker** at 321-242-3173 and the Saturday point of contact is **Gayle Schanck** at 541-821-7070.



Bunco

1st & 3rd Thursday, **December 4 & 18** @ 1:00–4:00 pm

Cost: \$6.00 Members / \$8.00 Non-Members

Please join us every 1st and 3rd Thursday of the month for Bunco and arrive by 12:45 pm. Don't forget to bring your current membership card. Bunco ends about 3-3:30 pm. Contact **Lisa Hofmann** at 760-717-6049 for more details and reservations (for set-up purposes). See

you there for this fun activity. All you have to know is how to throw three dice.



Chair Yoga

Tuesdays @ 3:00–4:00 pm/Sign-in @ 2:45 pm

Cost: \$1.00 Members / \$3.00 Non-Members



This class is designed to help with overall wellbeing for the body and mind. Stretches and movements that will help increase mobility, flexibility, strength and balance. A focus on posture and breathing helps calm the mind, helps reduce stress and increase oxygen flow. Contact **Shelly Anderson** at 321-626-1969.

Chef for Seniors

Classes @ 11:00 am–12:30 pm

Cost: \$6.00 Members / \$8.00 Non-Members

• **Topic & Date: TBD**

Join **Chef Jillian** for a Cooking For Seniors Class. Each Class includes an interactive cooking demonstration, free recipes, cooking tips and food tasting. Please sign up at front desk to reserve your spot. **All proceeds are donated by Chef Jillian to The Children's Hunger Project, Brevard County's Backpack Program.**



Sponsored



ACTIVITIES & GAMES

Color Pencil Portrait Class for Beginners

Wednesdays @ 9:40 am–12:00 pm

Cost: \$1.00 Members / \$3.00 Non-Members



Learn how to create a beautiful drawing from your favorite photograph! Bring your own portrait photograph to copy—Size: 5x8 (or other appropriate copy size).

Supplies you will need to bring:

Prismacolor Color Pencils, Watercolor Paper, Eraser, Pencil Sharpener (optional). For more information contact **Ann Armerding** at 321-541-7027.

Cornhole Tournaments

Sunday, **December 7 & 21** @ 1:30 pm

Setup & Practice Starting @ 12:30 pm

Cost: \$6.00 Members / \$8.00 Non-Members

(Annual Membership for 50+ is \$20)

Cornhole is welcome to all ages! Cornhole Tournaments will be held indoors at the WPSC every 2nd and 4th Sundays (excluding conflict with holidays). Don't forget to scan your membership card at the front desk.

November 2 Winners:

1st Place: James Jankovic & Kathy Calamaro

2nd Place: Mona James & Daryl James

Pile On- Top 2 Split:

Daryl James & Brian Beckage



Rules for Senior Center:

- Age 50 to 69: 27-ft. front edge to front edge
- Age 70 to 79: 25-ft. front edge to front edge
- Age 80 to 90: 23-ft. front edge to front edge
- Age 90 Plus/Non-Ambulatory: 21-ft. front edge to front edge

For any questions, please contact **Jay Koeller** at 321-794-6400 (jkoeller18@gmail.com) or **Amy Longtin** at 321-205-5161 (ajglrt@yahoo.com).

Fusion Glass Workshop w/Lauren

Cost: \$70 PP (Includes All Supplies & Kiln-Firing of Project & WPSC Costs)

Are you in search of a delightful and soothing way to express your creativity? Join us for an interactive fused glass workshop tailored for inquisitive beginners—no need for any artistic skills! If the term "fusible glass" is new to you, fear not—I'll guide you through the entire process step by step. We'll kick things off with a short introduction to kiln-fired glass and learn how to cut basic shapes. Then comes the exciting part: crafting your unique glass piece using a vibrant array of materials. Your completed project will be kiln-fired off-site and will be available for pickup at WPSC (for members) or at my studio in Merritt Island. Prefer shipping? That's available too!

This Workshop is friendly for beginners, creative and stress-free. Classes are limited to 16 participants, with a minimum of 4 required to run. Registration closes one week before the workshop date, so be sure to reserve your seat early and invite your friends to join. For more logistic details visit: <https://www.glassbylauren.com/wpsc-workshop-sign-ups>.

Closed-toe shoes required for safety. For questions, call or text 310-483-3229. Reserve your spot today and discover the enchantment of fused glass! All essential supplies are included.

Upcoming Fusion Glass Workshops:

Saturday, December 13, 2025 @ Noon–3:00P

Project: Fused Glass Christmas Tree or Wreath Plaque

On December 13th, we'll be making either a Fused Glass Tree or Wreath design on a plaque. You can choose to hang this plaque on a wall or showcase it on an easel. All essential supplies are provided. To book this workshop, email: info@glassbylauren.com



Sign up deadline is December 6. The sign-up sheet can be found in the WPSC lobby.

ACTIVITIES & GAMES

Euchre

**LAST GAME FOR THE YEAR WILL BE ON DECEMBER 17
WILL RESUME ON JANUARY 7**

Wednesdays @ 6:00–9:00 pm

Cost: \$5.00 Members / \$7.00 Non-Members

Members must scan their card when entering and non-members must sign in.

Euchre has been a great success and as our Euchre continues to grow, it is now common to have 5-6 tables in action. We try to promptly start by 6:00 pm which means we should be signed in no later than 5:50 pm to allow time to set up the correct 3/4 player table configuration and draw for your seats. The payout structure has been altered so more people are sharing the prize pool. That means if there are up to 30 players even eighth takes home a piece of the purse. For more information, contact **Jay Koeller** at 321-794-6400 (jkoeller18@gmail.com).

Hand & Foot Card Game

Mondays & Fridays 8:45 am–Noon / Setup @ 8:30 am

Cost: \$1.00 Members / \$3.00 Non-Members



Join this group of friendly and competitive players for a time well spent. Contact **Beverly Morgan** at 303-458-8273 for more information.

Jazzercise Lo

Mon. & Wed. @ 8:30–9:30 am and Fri. @ 8:30–9:15 am

Members: \$60.00/Month & Walk-ins \$15.00/Day

Join us for a fun and energized Jazzercise Lo class. Dance away those extra calories using Low Impact moves that yield MAXIMUM results! We use muscles, not momentum, to get a total body workout without the impact on your joints. For more information, contact **Ginny Parker** at 321-698-0445.

Line Dancing

NO LINE DANCING ON DECEMBER 9, 23 & 30

Tuesdays @ 4:15–5:30 pm

Cost: \$6.00 Members / \$8.00 Non-Members



We have been having so much fun in *Line Dancing for Fun and Exercise* every Tuesday from 4:15-5:30. While making new friends, we continue to improve our balance and coordination. We do have a revised Holiday Calendar!! Please take note!

- There will be NO LINE DANCE on Tuesday, December 9 as I will be enjoying our Wickham Park Senior trip to St Augustine!
- December 16 is our Holiday Class/Party for current class members.
- NO LINE DANCE CLASS: Tuesday December 23 for Christmas Week.
- NO LINE DANCE CLASS: Tuesday December 30 for New Years week.

All Line Dance for Fun and Exercise Resumes Tuesday January 6, 2026!!!

Have a very Blessed Holiday!!! Dancing is my Joy!!!! For more information, call **Sue Duncan**, Instructor and Choreographer for over 60 years at 321-505-0846.

Mahjong

American: Mondays @ Noon–3:00 pm &

Thursdays @ 9:00 am–Noon

Cost: \$1.00 Members / \$3.00 Non-Members

Chinese: Wednesdays @ 1:00–4:00 pm

Cost: \$5.00 Members / \$7.00 Non-Members

Mahjong is an activity that fosters friendly comradery and stirs the brain. Come join the fun! Contact **Patricia Rosenthal** at 321-626-5419 (American) or **Hugh McPhee** at 321-423-7698 (Chinese).



ACTIVITIES & GAMES

Pinochle

Mondays & Fridays @ 12:30–4:30 pm

Cost: \$1.00 Members / \$3.00 Non-Members

For more information, contact **Bill Mueller** at 321-242-4999 (Mondays & Fridays).

Poker (Dealers Choice)

Tuesdays & Fridays @ 11:30 am–4:00 pm

Cost: \$1.00 Members / \$3.00 Non-Members

Contact **Bill Seigel** at 813-416-0428.

Poker (Friendly)

Mondays @ 1:00–4:00 pm

Cost: \$1.00 Members / \$3.00 Non-Members

Attention: Players Needed! Pennies Only. Call ahead to attend. Contact **Beverly Morgan** at 303-458-8273.

Pool (Billiards)

Monday thru Friday @ 8:30 am–4:30 pm

Saturday 9:30 am–12:30p

Tournaments: 2nd Wednesday of Every Month @ 11:00 am

Cost: \$1.00 Members / \$3.00 Non-Members

Plus \$.50 per Day or \$2.00 per Week

YE OL Pool Room 8-Ball Tournament Nov. 12 Results:

1st: Barry Beddow

2nd: Joe Franco

3rd: Bob Furlong

4th: Mike Spaethe

Next tournament is

December 10. Questions?

Contact **Wally Topinko** at 321-622-4977.



FREE
AD DESIGN
with purchase
of this space

CALL 800-477-4574

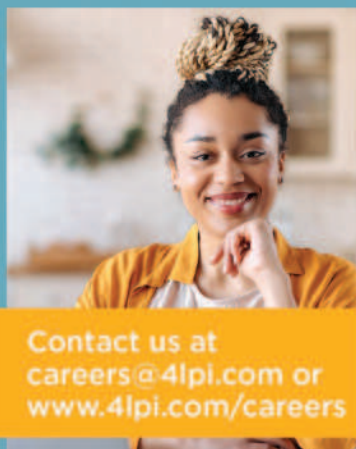
**SUPPORT OUR
ADVERTISERS!**

WE'RE HIRING!
AD SALES EXECUTIVES



**BE YOURSELF.
BRING YOUR PASSION.
WORK WITH PURPOSE.**

- Paid training
- Some travel
- Work-life balance
- Full-Time with benefits
- Serve your community



Contact us at
careers@4lpi.com or
www.4lpi.com/careers

LET'S GROW YOUR BUSINESS
Advertise in our Newsletter!

CONTACT ME
Rich Fernbach

rfernbach@lpicommunities.com

(800) 477-4574 x3675

ACTIVITIES & GAMES

QiGong-TaiChi

Mon., Wed., & Fridays @ 8:30–9:30 am

Cost: \$5.00 Members / \$7.00 Non-Members



For over 50 years, scientists at the Institute for Aging Research, an affiliate of Harvard Medical School, have been studying what causes falls among the elderly, and how to prevent them. One of the most promising interventions is TaiChi. It offers senior

practitioners inner peace and improves balance, flexibility and mental agility. It also reduces death due to falls and injury among older adults. We focus more on the Healing Art of QiGong of TaiChi. **Laura Parsons**, Certified Instructor at 321-474-5374.

Senior Law

4th Friday of the Month @ 2:00–4:00P

NO WORKSHOPS IN DECEMBER

NEXT WORKSHOP: JANUARY 23, 2026

Cost: Free to All WPSC Members

The Slonim Law Firm invites you to attend a FREE seminar and question/answer session on the 4th Friday of each month at WPSC Room 117.

Topics:

- Last Will & Testament & Trusts
- Durable Power of Attorney & Healthcare Directives
- Digital Assets
- Medicaid and Asset Protection Options
- General Dementia Issues
- Guardianships
- Probate Matters
- Living Wills

Seating is limited. Please sign up at the front desk. Any questions, call the Law office at 321-757-5701.

Rummikub

Wednesdays @ 1:00–4:00 pm

Cost: \$1.00 Members / \$3.00 Non-Members

Rummikub is a tile-based game combining elements of the card game rummy and mahjong. It's an easy game to play and if you don't know how to play, our group will be happy to teach you. Come join us for a fun afternoon. Contact **Peggy Miles** at 732-688-6268.

Senior Stitchers

Thursdays @ 10:00 am–Noon in Room 114

Cost: \$1.00 Members / \$3.00 Non-Members

Would you like to learn to Knit or Crochet or do you already know how to Knit or Crochet? If so, please join us

for a morning of friendship and pleasant conversation while learning new skills and stitches while helping each other to share and improve our skills. What to Bring: If you are already experienced, please bring a WORK IN PROGRESS that you'd like to work on. If you're a beginner, please bring some worsted yarn and some Size 8 knitting needles or a Size G crochet hook. For more information contact **Laurie Liguori** at 917-882-9898.



Shuffleboard

Open Play: Monday 9–11:00 am

Open Practice: Thurs. 6–8:30 pm & Sat. 9:00 am–Noon

Cost: \$1.00 Members / \$3.00 Non-Members

SHUFFLEBOARD STATE TOURNAMENT:

DECEMBER 22 & 23 – DOUBLES M/L – 8 AM–6 PM

For more information on learning how to play or participating in tournaments, call **Tom Winkelspecht** at 321-446-3283 or email: tawinkii@me.com

Strength/Flexibility

Thursdays @ 9:30–10:30 am

Cost: \$4.00 Members / \$6.00 Non-Members



This is a class you won't want to miss and has everyone talking! This class will introduce greater strength and flexibility that your body will love and you will love going to. It also helps posture and alignment of the spine, helps us stay limber, agile, strong and keeps our balance in check. We work core, arm and leg strength. This class gets full so call before you come! Please contact **Susie Salvetti** at 321-626-0282.

TRAVEL NEWS



**Travel Group Trip to Charleston, SC
October 20-23, 2025**

Mount Dora Christmas

Date: December 5, 2025

Cost: \$69 PP

Time: Leaves WPSC at 2:00 pm / Returns at 10:00 pm

Celebrate the 2025 holidays against a backdrop of over 2 million sparkling lights in beautiful downtown Mt. Dora. Contact the WPSC Travel Office for more information.

Saint Augustine Christmas Lights

Date: December 9, 2025

Cost: \$89 PP

Time: Leave WPSC at 12:00 pm / Returns at 8:45 pm

Sign up now for our exciting one day excursion to St. Augustine, our nation's oldest city. We will be stopping at Bucees in Daytona for lunch on your own. We should arrive at St. Augustine about 3:00 pm. You will have from 3:00 pm to 5:30 pm to shop and eat. At 6:00 pm we will meet at the Visitors Center for a 45-min. narrated Trolley Tour through the historic district. We will depart for home at approx. 7:15 pm.

2026

McKee Botanical Gardens & Lunch at Tuohy's Downtown Restaurant

Date: January 13, 2026

Cost: \$119 PP

Time: TBD

More information coming soon.

Please visit our website www.bcwpssc.org, for more information or call the office at 321-425-5530 Monday–Friday, 9:00 AM–1:00 PM

HAIRSPRAY at the Titusville Playhouse & Lunch at Dixie Crossroads

Date: February 8, 2026

Cost: \$179 PP

Time: TBD

Feel the excitement and dance like nobody is watching as Broadway's Tony Award-winning musical comedy HAIRSPRAY spins to the stage! The 1950s are out, and change is in the air! Meet Tracy Turnblad, a lovable plus-size teen with big hair and an even bigger ambition—she's determined to dance on the "Corny Collins Show" and fight for integration! With catchy hits like "Welcome to the 60s" and "You Can't Stop the Beat," get ready for a family-friendly show packed with laughter, love, and non-stop fun! Join us for a heartwarming adventure that will keep you dancing all night!

Florida Strawberry Festival

Date: March 1, 2026

Cost: \$169 PP

The festival celebrates the annual strawberry harvest in Plant City, marking its 91st year in 2026. Each spring, the Florida Strawberry Festival® rolls out the red carpet to welcome visitors from throughout the Sunshine State and the world to enjoy exhibits of agriculture, commerce, industry, livestock, fine arts, horticulture, and crafts. The fabric of American life is woven into the Festival through social events, contests, youth developmental programs, and parades with glorious floats and high-stepping marching bands.

Morikami Japanese Garden Tour with Bento Box Lunch

Date: March 26, 2026

Cost: \$119 PP

Experience the essence of Japan and uncover a destination that transcends time and place nestled in Delray Beach, Florida. We will have a guided tour in this 16-acre park. This is where you can experience a window to Japan through the sprawling gardens and a world-class bonsai display. What a perfect way to experience the Japanese lifestyle with their Bento Box lunch (either Classic or Vegetarian)! This will include: white rice, teriyaki chicken, teriyaki salmon, assorted dumplings, vegetarian options and more. Please let us know which you prefer when you register for this amazing trip.

TRAVEL NEWS

Branson, MO

Date: March 30 – April 3, 2026

Cost: \$1,589 PP Double / \$185 Additional for Single Occupancy
\$200 Deposit / Final Payment Due February 1, 2026

Package includes: Roundtrip Airfare from Orlando, FL to Branson, MO and transportation to the airport; Deluxe Roundtrip Motorcoach Transportation; 4 Night/5 Days Accommodations; 4 Breakfasts and 4 Dinners; 5 Star-Studded Shows; Full Days Admission to Silver Dollar City; Visit to Branson Landing; Free time for shopping at the Grand Village Shoppes; and includes all Taxes and Meal Gratuities.

Mount Rushmore & the Black Hills & Badlands of South Dakota

Date: September 21-27, 2026

Cost: \$2,067 PP Double / \$2,567 Single Occupancy
\$200 Deposit / Final Payment Due August 1, 2026

Package includes:

- RT Airfare from Orlando Airport to Rapid City

- 6 Nights Deluxe Accommodations in Rapid City
- 10 Great Meals
- Mount Rushmore (Day & Night)
- Devil's Tower National Monument
- Crazy Horse Memorial
- Fort Hays
- Badlands National Park
- Wall Drug Store
- Custer State Park
- Buffalo Jeep Safari
- State Game Lodge Dinner
- 1880 Train & Deadwood
- The Mammoth Site
- The Journey Museum
- Black Hills Gold Factory
- K-Bar S Ranch Dinner
- Chuckwagon Supper & Cowboy Show

Participants MUST be able to travel independently or bring a companion who can assist. NO refunds once the vendor has been paid.



**SUPPORT THE
ADVERTISERS**
that Support our
Community!

OUR SPONSORS

The Officers and Membership of Wickham Park Senior Center appreciates the continued support of our many Sponsors. As an all volunteer-run organization, their continued financial support allows us to offer Activities and Social events for our members.

Diamond Level Sponsors



RVH INSURANCE NAVIGATORS
LET US NAVIGATE YOU THROUGH MEDICARE



Gold Level Sponsors



Meet & Greet Schedule

Our monthly Meet & Greets with our sponsors have been scheduled for Tuesday and Friday mornings from 9–11:00 am. Each sponsor will have a table set up just outside the front door or inside the lobby to provide you with information, fun giveaways, and someone knowledgeable to answer your specific questions. Please mark your calendars and come up to meet them:

- Better Health Group (BHG) - 3rd Tuesday:
 - Dec. 16 @ 9-11:00 am
- Brookdale West Melbourne - 3rd Tuesday:
 - Dec. 16 @ 9-11:00 am
- Freedom Health - 4th Tuesday:
 - Dec. 5 @ 9-11:00 am
- Health First - 1st Tuesday:
 - Dec. 2 @ 9-11:00 am
- LiveWave - 4th Tuesday:
 - Dec. 2 @ 9-11:00 am
- Moore Insurance - 2nd Tuesday:
 - Dec. 12 @ 9-11:00 am
- Narlock Insurance/United Healthcare - 3rd Friday:
 - Dec. 19 @ 9-11:00 am
- Physician Partners - 2nd Tuesday:
 - Dec. 9 @ 9-11:00 am
- My Memory Clinic - 1st Friday:
 - Dec. 5 @ 9-11:00 am
- RVH Insurance - 4th Friday:
 - Dec. 5 @ 9-11:00 am
- Tiny Dog Cleaning - 2nd Friday:
 - Dec. 12 @ 9-11:00 am

IN EVERY ISSUE

WELCOME

New Members in October

Abraham, Lisa	Guriere, Tonya
Auriemma, Charlotte	Hallen, Andy
Austin, Thomas	Hallen, Diane
Baker, Steven	Hernandez, Vincent
Bechtel, Carol	Hume, Shauna
Bowie, Mary Ann	Jennings, Shirley
Bowie, Robert	Klingberg, Pamela
Bowman-Yap, Patricia	Krueger, Susanne
Boyd, John	Krupp, Vivian
Brooks, Jan	Leczmar, Donna
Carroll, John	Levy, Donald
Carroll, Linda	Linden, Evelyn
Cavalier, Joan	Margileth, Andrew
Chinapen, Dharma	Mathey, Barbara
Cobleigh, Jim	Mathey, Paul David
Cobleigh, Suzanne	Maxwell, Elsie
Durkin, Sherry	Mink, Thomas
Egerton, Jeanette	Pasciuto, Anthony
Foss, David	Penn, Suzanne
Gabbard, Monica	Rodemer, Dee
Galeana, Linda	Sanborn, Danny
Garrison, Virginia	Sims, Terri
Greene, Linda	Watz, Cindy
Greene, Mark	



Wickham Park Senior Center Holiday Closures for 2025

To enable our volunteers to spend more time with their families during the upcoming holiday season, Wickham Park Senior Center will be closed on the following dates:

- **Christmas Holiday:**
 - WPSC will be closed the entire week of Christmas – Monday, December 22 through Sunday, December 28.
 - We will re-open Monday, December 29
- **New Year's Holiday:**
 - Wednesday, December 31 - Closing at 12:30 pm
 - Thursday, January 1, 2026 (New Year's Day)
- **We will re-open Friday, January 2, 2026.**

NEED TO SCHEDULE AN APPOINTMENT WITH SHINE?

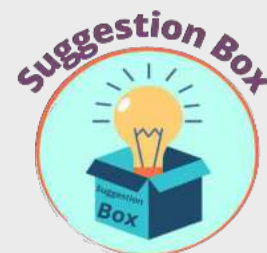


The WPSC SHINE Group is available Tuesdays from 9:00 am to 12:00 Noon in Room 104. Anyone interested can call 407-514-1800 to schedule an appointment. No fee required!

COMMENTS?

We Value Your Opinion!

There's a SUGGESTION BOX in the lobby for your feedback or ideas on how we can enhance the experience at the WPSC!



Deadline for copy submission to the newsletter is the **15th of each month**. Please email copy to:
news@bcwpsc.org

Wickham Park Senior Center is not equipped, nor intended to be a senior care facility. WPSC activities are geared toward independent adults who are able to manage their own care, decisioning making and safety. WPSC's insurance prohibits, and WPSC cannot be responsible for, the provision of physical assistance to individuals on the premises. If an adult companion is needed, the companion may participate in the activity if they desire, regardless of age, and must pay all fees associated with the activity. WPSC reserves the right to prevent persons from being on premises if the WPSC leadership believes that person would cause harm to themselves or others.



SLONIM LAW
 Estate Planning • Probate
 Your *local* Guardianship • Medicaid **Attorneys**
 Adoption and Mediation

Code: WPSC




David Netzley *Your neighborhood law firm!* David Slonim



SHORT STAFFED?

Place an ad here to find new local talent for your business.

CALL 800-477-4574

Place Your Ad Here and Support our Community!

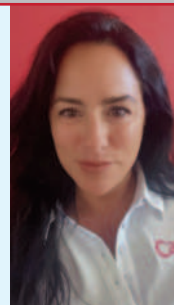
Instantly create and purchase an ad with

AD CREATOR STUDIO



lpicommunities.com/adcreator

CarePlus
 HEALTH PLANS
Kristine Quattrone
Licensed Insurance Agent
 Brevard & Indian River County
Kquattrone@careplus-hp.com
321-326-4033



NEVER MISS OUR NEWSLETTER!

SUBSCRIBE

Have our newsletter emailed to you.



VISIT **WWW.MYCOMMUNITYONLINE.COM**



For ad info. call 1-800-477-4574 • www.lpicommunities.com

16-0351