

NEWSLETTER



POsterior LaminectomY with FIXation for MultiLevel Degenerative Cervical Myelopathy

WELCOME TO THE 14TH EDITION OF THE POLYFIX-DCM NEWSLETTER!

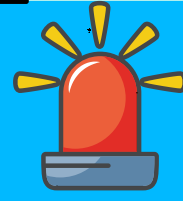
TOTAL PATIENTS:



69



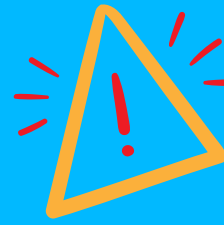
A big welcome to the team in University Hospital North Midlands, which have opened this past month!



CRFs Needed! Teams please send us all the images and CRFs completed within your unit so far! We need the data for review and upload in our database.



Meet us at the SBNS Myelopathy meet and Greet 12:45 pm Weds 13th Sept, Rose Suite, Twickenam



1. LOCAL TEAMS, PLEASE SEND TO CCTU ALL COMPLETED CRFS TO DATE, FOR THE DATA TO BE UPLOADED

2. PLEASE SEND US ALL THE IMAGES OF YOUR PATIENTS DONE SO FAR (XR AND MRI)

Up to now, we have opened 18 sites and 69 patients have now been recruited into the POLYFIX DCM trial!

Thank you to all sites opened so far and for the amazing job done so far.

NIHR, though, is still keeping track of our recruitment, thus to make sure we continue to do this without any issues, we need at least two to three patients recruited from all opened sites in the next couple of months to bring our recruitment up and on track!

We have hit the base camps of Everest, and now the big climb is on! The bigger target now is **396** total participants, **327** to go!

Mark Kotter and Ben Davies

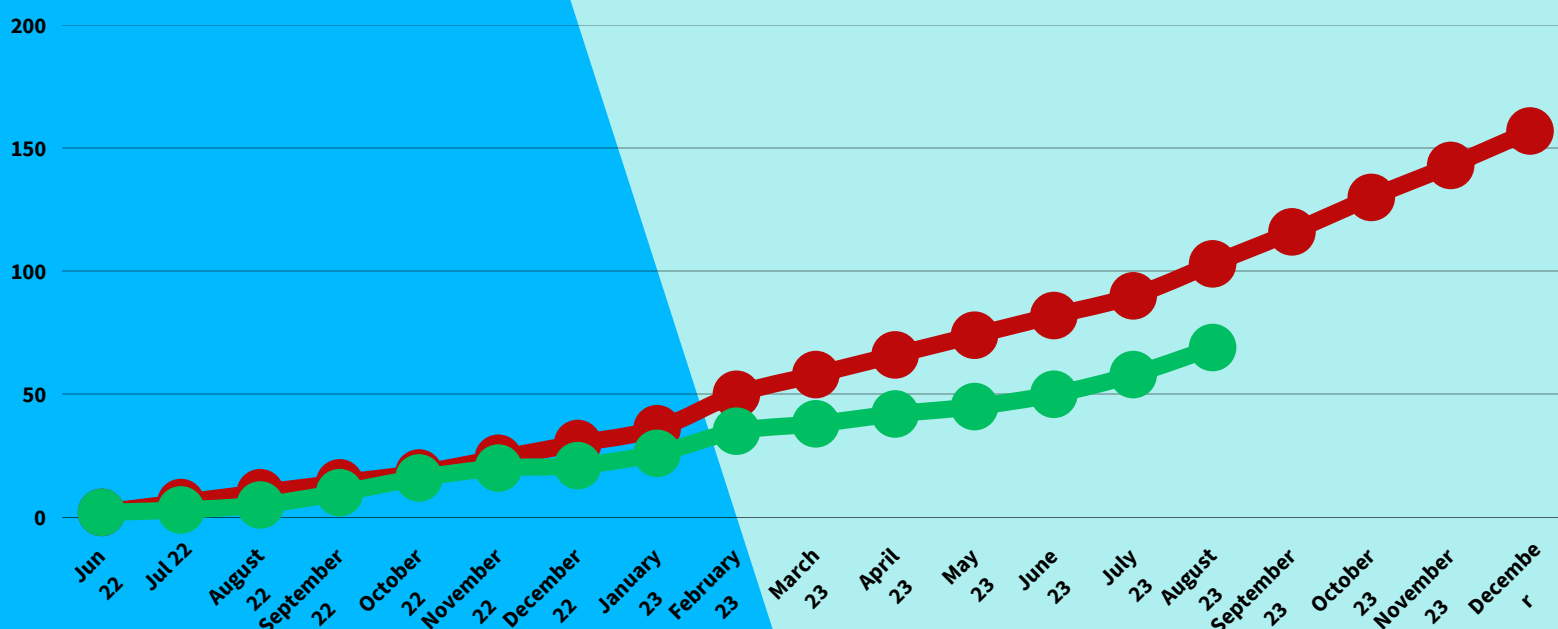
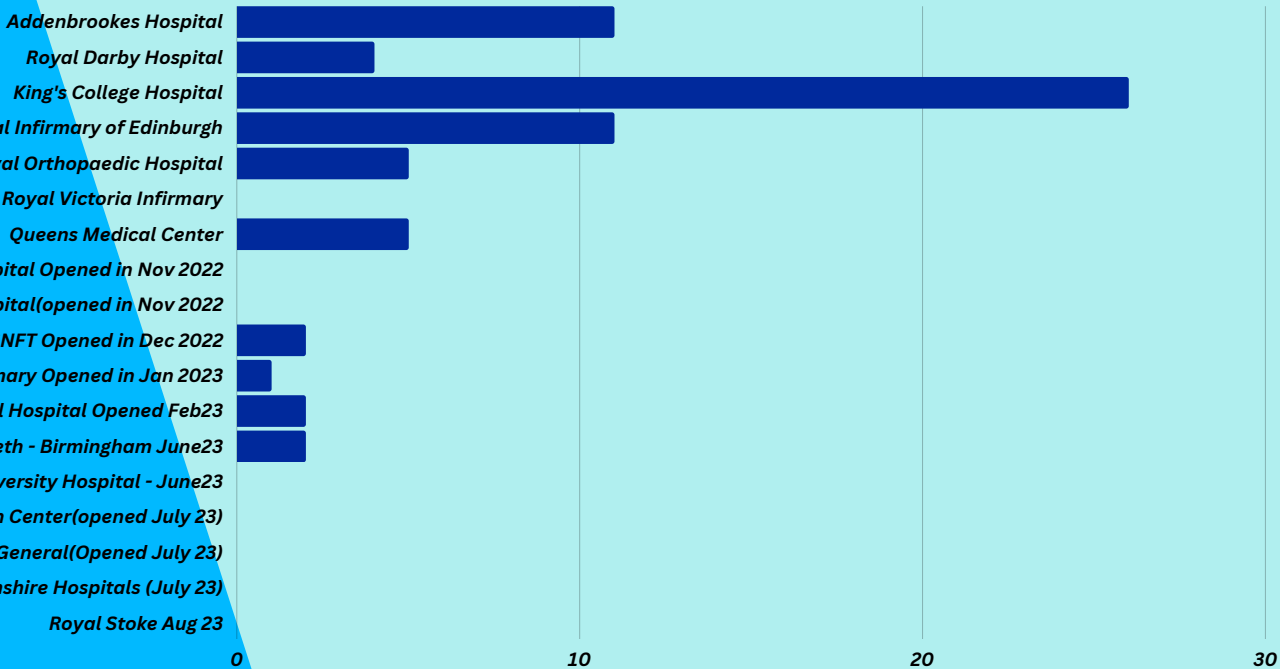
SITES OPENED

18

SITES IN SETUP

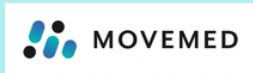
11

- ADDENBROOKE'S HOSPITAL (CAMBRIDGE) (11)
- ROYAL DERBY HOSPITAL (4)
- KING'S COLLEGE HOSPITAL (26)
- ROYAL INFIRMARY OF EDINBURGH(11)
- ROYAL ORTHOPAEDIC HOSPITAL (BIRMINGHAM)(5)
- ROYAL VICTORIA INFIRMARY (NEWCASTLE) (2)
- QUEEN'S MEDICAL CENTRE (NOTTINGHAM) (5)
- ST GEORGE'S HOSPITAL(LONDON)
- ST MARY'S HOSPITAL (IMPERIAL COLLEGE)
- ESNEFT (IPSWICH)(2)
- ABERDEEN ROYAL INFIRMARY(1)
- JAMES COOK UNIVERSITY HOSPITAL(SOUTH THEES)(2)
- QUEEN ELIZABETH HOSPITAL (BIRMINGHAM)(2)
- THE WALTON CENTER(LIVERPOOL)
- SOUTHAMPTON GENERAL HOSPITAL(SOUTHAMPTON)
- NORTHERN GENERAL AND HALLIMSHIRE HOSPITALS(SHEFFIELD)
- UNIVERSITY HOSPITAL NORTH MIDLANDS(STOKE)
- SUNDERLAND ROYAL HOSPITAL(SUNDERLAND)(3)



THE BIG ASK!

1. **PRE-OP MJOA** - IT IS VITAL FOR US TO KNOW WHEN THE SURGERY FOR YOUR RECRUITS IS! PLEASE KEEP US IN THE LOOP, AS WE NEED TO CALL THEM BEFORE THEY ARE OPERATED



2. **MOVEMED** -PLEASE CONFIRM IF THE PATIENT WANTS TO BE PART OF MOVEMED. WE NEED THEIR EMAIL AND MOBILE NUMBER.

NO FURTHER INVOLVEMENT FROM YOU IS NEEDED. ONCE YOU LET US KNOW, WE WILL SEND THE PATIENT INSTRUCTIONS HOW TO DOWNLOAD THE APP.

REMINDER -WHAT CAN YOU DO TO SPEED UP POLYFIX.

CC: PAULA.KARECLAS1@NHS.NET & SAIMA.SIDDIQUI4@NHS.NET

DEAR R&D

WHERE ARE WE UP TO WITH POLYFIX-DCM? THE TRIAL IS NOW UP AND RUNNING, AND RECRUITING ELSEWHERE

IT WOULD BE GREAT TO GET US ON-BOARD. I HAVE COPIED THE TRIAL'S MANAGER IN PAULA IN CASE THERE IS ANYTHING YOU NEED FROM THEM.

Autumn SBNS 2023 - London

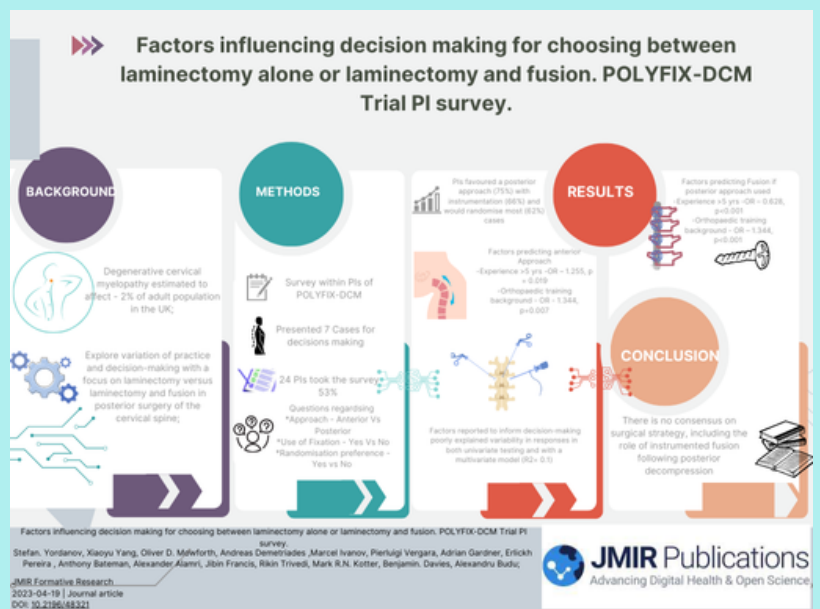
ATTENDING SBNS THIS AUTUMN?

OUR TEAM WILL BE THERE AS WELL!

MYELOPATHY MEET AND GREET
12:45 PM WEDS 13TH SEPT,
ROSE SUITE, TWICKENAM



New Publication coming soon as part of the group!



eCRF is now Live!

Let us know if you would like to use it. Our database is hosted on MACRO.

Please email:

S.YORDANOV@NHS.NET and

PAULA.KARECLAS1@NHS.NET or

saima.siddiqui4@nhs.net for training and set up



PROGRESSS

