

# NEWSLETTER



POsterior Laminectomy with FIXation for MultiLevel Degenerative Cervical Myelopathy

## WELCOME TO THE 17TH EDITION OF THE POLYFIX-DCM NEWSLETTER!

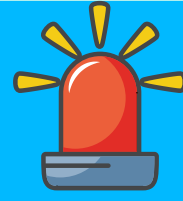


TOTAL PATIENTS:

85



**A big Thank You to all teams opened as part of POLYFIX! We would like to wish you a happy holiday season!**



**CRFs Needed! For team still using paper:**  
Please send us all CRFs completed within your unit so far! We need the data for review and upload in our database.



**Images Awaited!** We are waiting to receive the pre-op XRs and MRIs as part of the trial for us to be able to complete our central assessments! How to do it? -->all detailed in the trial site manual!



**You have MACRO access-->even better, please upload all data promptly, and we can keep paper light!**

We have opened 21 sites, and 85 patients have been recruited into the POLYFIX DCM trial, thanks to the fantastic job done on all sites!

We are now almost halfway through the recruitment period, and we currently need to catch up to our NIHR-given targets.

Our big ask is to keep recruitment steady over the coming months. 2 patients per site in the next 2-to 3 months will bring our recruitment figures back on the green and help our steady climb in the future!

*We have hit the base camps of Everest, and now the big climb is on!*  
The bigger target now is **396** total participants, **310** to go!

Mark Kotter and Ben Davies

### SITES OPENED 21

### SITES IN SETUP

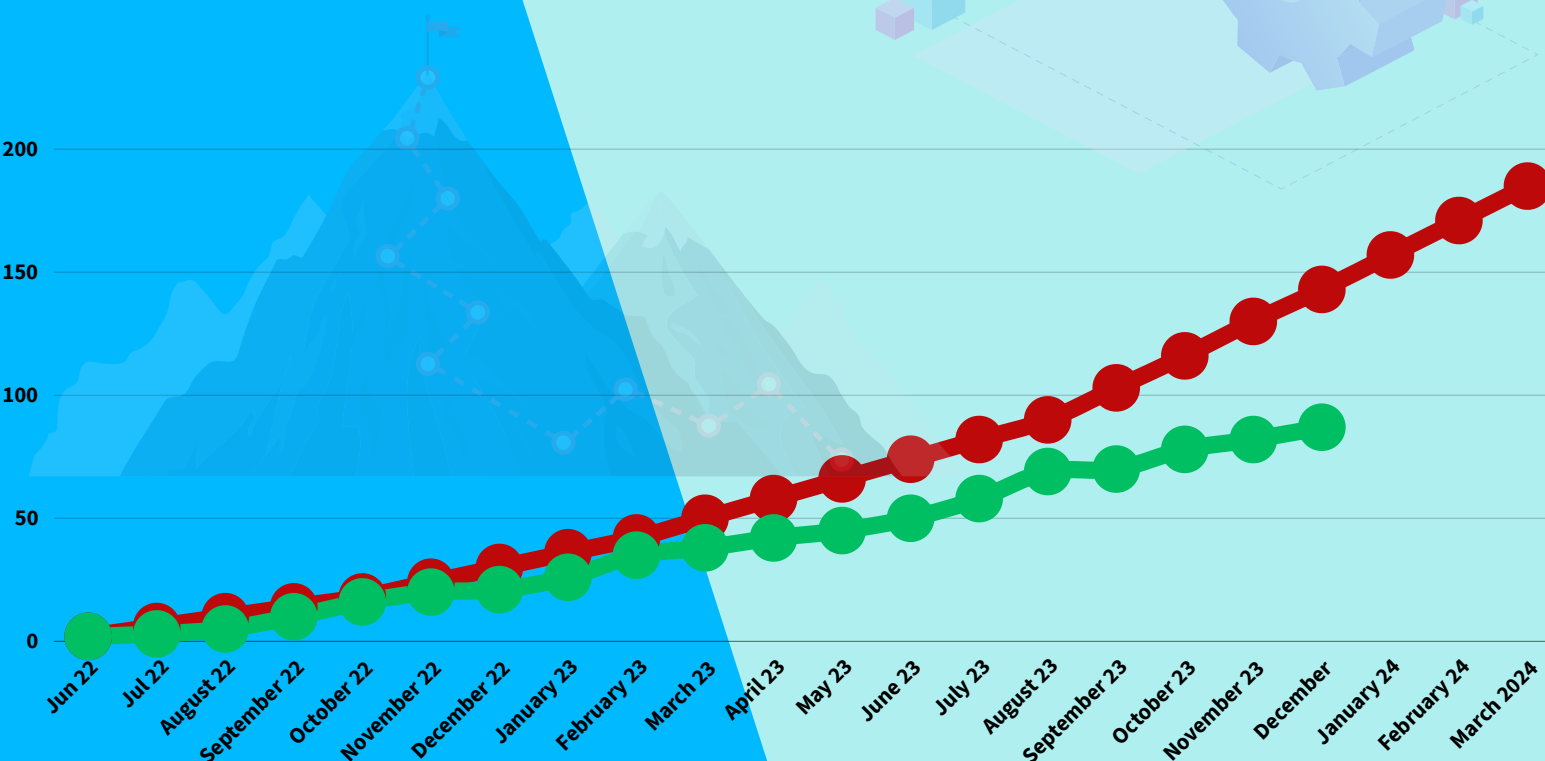
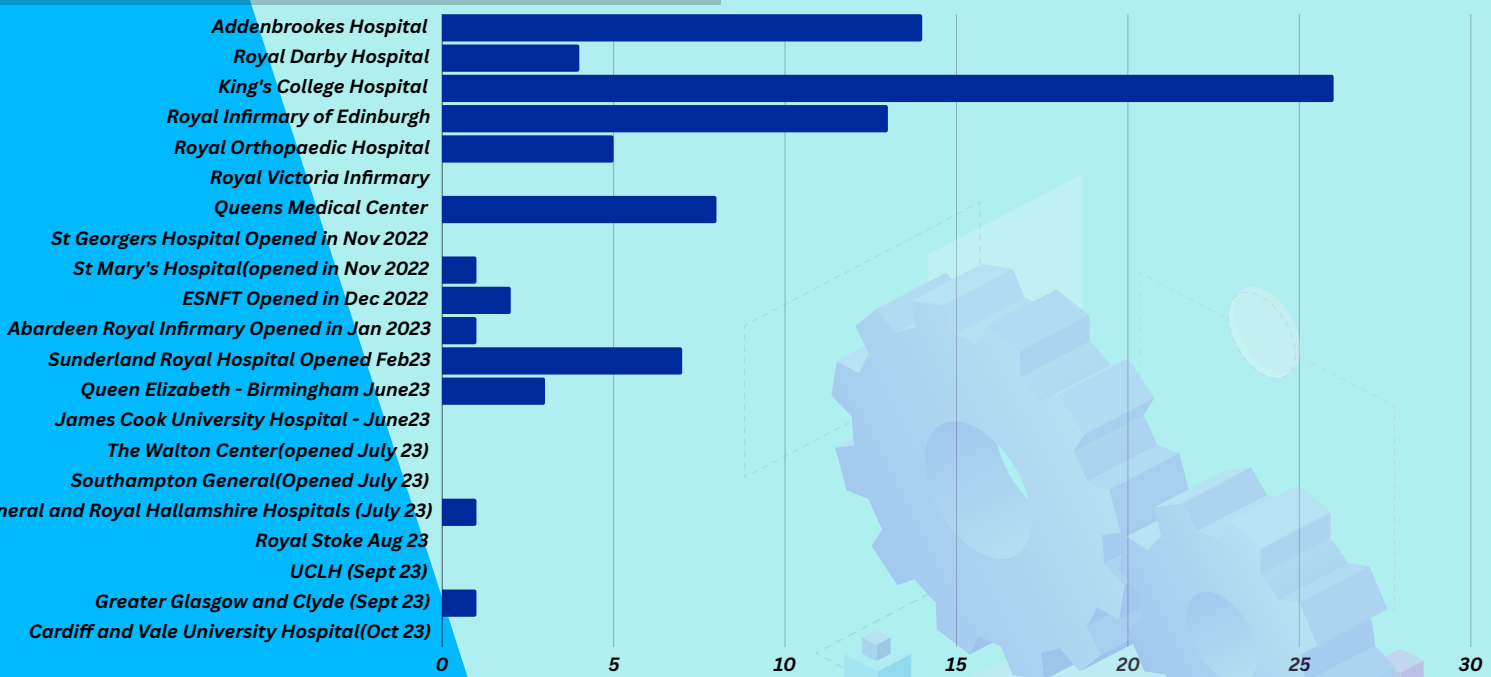
- ADDENBROOKE'S HOSPITAL (CAMBRIDGE) (14)
- ROYAL DERBY HOSPITAL (4)
- KING'S COLLEGE HOSPITAL (26)
- ROYAL INFIRMARY OF EDINBURGH(14)
- ROYAL ORTHOPAEDIC HOSPITAL (BIRMINGHAM)(5)
- ROYAL VICTORIA INFIRMARY (NEWCASTLE) (2)
- QUEEN'S MEDICAL CENTRE (NOTTINGHAM) (8)
- ST GEORGE'S HOSPITAL(LONDON)(0)
- ST MARY'S HOSPITAL (IMPERIAL COLLEGE)(0)
- ESNEFT (IPSWICH)(2)
- ABERDEEN ROYAL INFIRMARY(1)
- JAMES COOK UNIVERSITY HOSPITAL(SOUTH THEES)(2)
- QUEEN ELIZABETH HOSPITAL (BIRMINGHAM)(3)
- THE WALTON CENTER(LIVERPOOL)(0)
- SOUTHAMPTON GENERAL HOSPITAL(SOUTHAMPTON)(0)
- NORTHERN GENERAL AND HALLIMSHIRE HOSPITALS(SHEFFIELD)(1)
- UNIVERSITY HOSPITAL NORTH MIDLANDS(STOKE)(0)
- SUNDERLAND ROYAL HOSPITAL(SUNDERLAND)(7)
- UNIVERSITY COLLEGE LONDON(LONDON)(0)
- UNIVERSITY HOSPITAL GLASGOW(GLASGOW)(1)
- CARDIFF AND VALSE UNIVERSITY HOSPITAL(CARDIFF)(0)



8



4



# Other News

## THE BIG ASK!

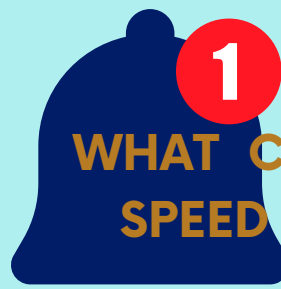
**1. PRE-OP MJOA** - IT IS VITAL FOR US TO KNOW WHEN THE SURGERY FOR YOUR RECRUITS IS! PLEASE KEEP US IN THE LOOP, AS WE NEED TO CALL THEM BEFORE THEY ARE OPERATED



**2. MOVEMED** -PLEASE CONFIRM IF THE PATIENT WANTS TO BE PART OF MOVEMED. WE NEED THEIR EMAIL AND MOBILE NUMBER.

NO FURTHER INVOLVEMENT FROM YOU IS NEEDED. ONCE YOU LET US KNOW, WE WILL SEND THE PATIENT INSTRUCTIONS HOW TO DOWNLOAD THE APP.MORE INFORMATION -[HTTPS://POLYFIX-DCM.COM/MOVEMED-SUBSIDY](https://polyfix-dcm.com/movemed-subsidy)

**3. MACRO CRF COMPLETION** - TEAMS PLEASE COMPLETE YOUR ONLINE DATA WITHIN TWO WEEKS OF VISIT IF YOU ARE USING MACRO.



## WHAT CAN YOU DO TO SPEED UP POLYFIX?

**CC: PAULA.KARECLAS1@NHS.NET & SAIMA.SIDDIQUI4@NHS.NET**

DEAR R&D

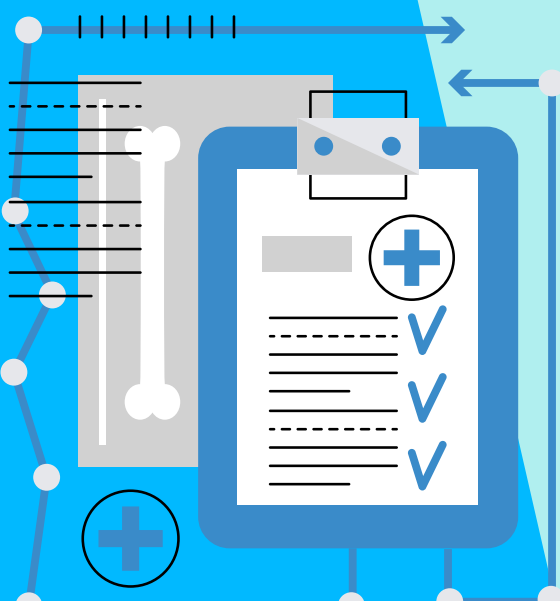
WHERE ARE WE UP TO WITH POLYFIX-DCM? THE TRIAL IS NOW UP AND RUNNING, AND RECRUITING ELSEWHERE

IT WOULD BE GREAT TO GET US ON-BOARD. I HAVE COPIED THE TRIAL'S MANAGER IN PAULA IN CASE THERE IS ANYTHING YOU NEED FROM THEM.

## Carer Quality of Life Subsidy



Please don't forget this small substudy looking through the experience of the carers of patients with myelopathy. Complete their Consent and send us their PID so that we can follow up with them centrally.



eCRF is now Live!

A big training session has already been done. Most centres have access. Please let us know if you are still missed out!

Please email:

**S.YORDANOV@NHS.NET** and **PAULA.KARECLAS1@NHS.NET** or **saima.siddiqui4@nhs.net** for training and set up

# PROGRESSS

