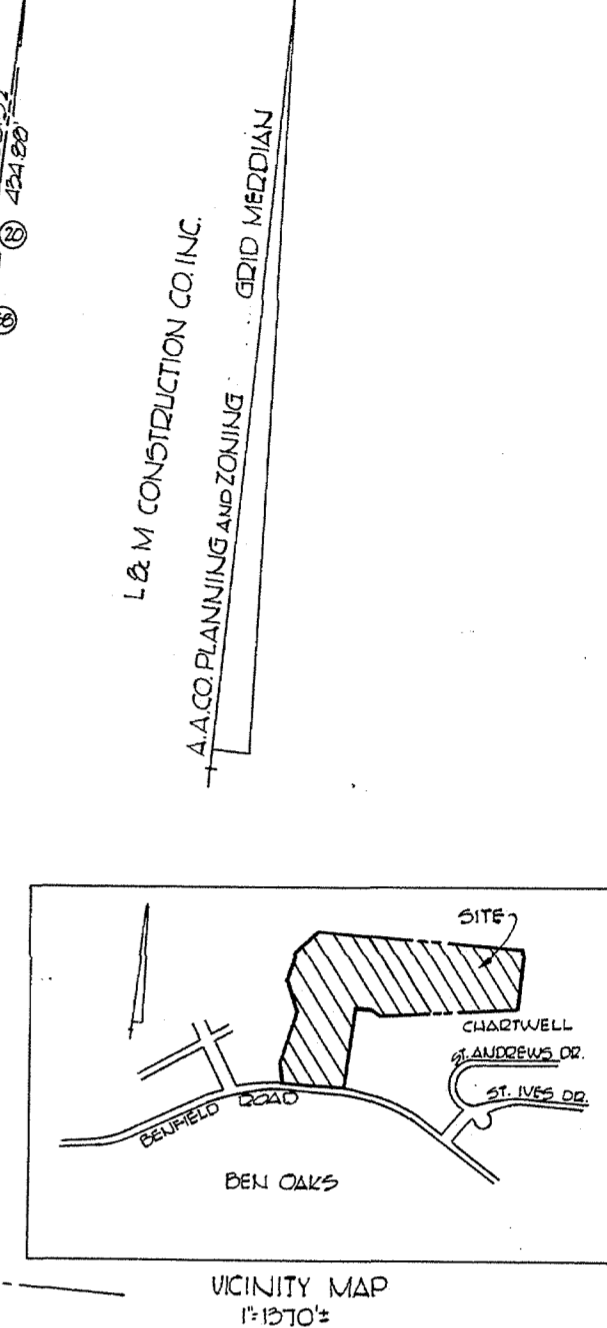


1860

GOREN PROPERTY



COORDINATES

LOT	NORTH	EAST	LOT	NORTH	EAST
1	457305.99	011171.20	2	457310.89	011134.33
2	457310.94	011081.09	3	457321.00	011209.41
3	457321.14	010964.28	4	457311.19	010979.11
4	457311.21	010724.72	5	457311.29	010644.94
5	457321.33	010596.17	6	457321.49	010504.22
6	457321.47	010421.01	7	457321.17	010407.00
7	457321.74	010418.66	8	457321.90	010342.21
8	457321.77	010225.92	9	457321.90	010202.32
9	457321.01	010121.11	10	457321.30	010165.80
10	457321.03	010008.90	11	457321.32	010051.44
11	457321.19	010151.78	12	457321.75	010071.03
12	457321.02	010062.63	13	457321.19	010022.85
13	457321.19	010002.08	14	457321.73	010012.35
14	457321.41	010071.14	15	457321.92	010003.10
15	457321.40	010003.72	16	457321.13	010003.90
16	457321.16	010022.54	17	457321.18	010024.87
17	457321.16	010003.72	18	457321.01	010003.23
18	457321.40	010071.02	19	457321.02	010011.80
19	457321.40	010071.02	20	457321.22	010002.70
20	457321.20	010001.01	21	457321.10	010024.83
21	457321.59	010003.92	22	457321.43	010016.58
22	457321.20	011162.31	23	457321.24	011024.31
23	457321.47	011162.31	24	457321.94	011024.31
24	457321.40	011116.90	25	457321.89	011024.31
25	457321.42	011014.92	26	457321.02	011024.44
26	457321.40	011116.90	27	457321.94	011024.31
27	457321.40	011116.90	28	457321.70	011024.31
28	457321.40	011116.90	29	457321.47	011024.31
29	457321.40	011116.90	30	457321.47	011024.31
30	457321.40	011116.90	31	457321.47	011024.31
31	457321.40	011116.90	32	457321.47	011024.31
32	457321.40	011116.90	33	457321.47	011024.31
33	457321.40	011116.90	34	457321.47	011024.31
34	457321.40	011116.90	35	457321.47	011024.31
35	457321.40	011116.90	36	457321.47	011024.31
36	457321.40	011116.90	37	457321.47	011024.31
37	457321.40	011116.90	38	457321.47	011024.31
38	457321.40	011116.90	39	457321.47	011024.31
39	457321.40	011116.90	40	457321.47	011024.31
40	457321.40	011116.90	41	457321.47	011024.31
41	457321.40	011116.90	42	457321.47	011024.31
42	457321.40	011116.90	43	457321.47	011024.31
43	457321.40	011116.90	44	457321.47	011024.31
44	457321.40	011116.90	45	457321.47	011024.31
45	457321.40	011116.90	46	457321.47	011024.31
46	457321.40	011116.90	47	457321.47	011024.31
47	457321.40	011116.90	48	457321.47	011024.31
48	457321.40	011116.90	49	457321.47	011024.31
49	457321.40	011116.90	50	457321.47	011024.31
50	457321.40	011116.90	51	457321.47	011024.31
51	457321.40	011116.90	52	457321.47	011024.31
52	457321.40	011116.90	53	457321.47	011024.31
53	457321.40	011116.90	54	457321.47	011024.31
54	457321.40	011116.90	55	457321.47	011024.31
55	457321.40	011116.90	56	457321.47	011024.31
56	457321.40	011116.90	57	457321.47	011024.31
57	457321.40	011116.90	58	457321.47	011024.31
58	457321.40	011116.90	59	457321.47	011024.31
59	457321.40	011116.90	60	457321.47	011024.31
60	457321.40	011116.90	61	457321.47	011024.31
61	457321.40	011116.90	62	457321.47	011024.31
62	457321.40	011116.90	63	457321.47	011024.31
63	457321.40	011116.90	64	457321.47	011024.31
64	457321.40	011116.90	65	457321.47	011024.31
65	457321.40	011116.90	66	457321.47	011024.31
66	457321.40	011116.90	67	457321.47	011024.31
67	457321.40	011116.90	68	457321.47	011024.31
68	457321.40	011116.90	69	457321.47	011024.31
69	457321.40	011116.90	70	457321.47	011024.31
70	457321.40	011116.90	71	457321.47	011024.31
71	457321.40	011116.90	72	457321.47	011024.31
72	457321.40	011116.90	73	457321.47	011024.31
73	457321.40	011116.90	74	457321.47	011024.31
74	457321.40	011116.90	75	457321.47	011024.31
75	457321.40	011116.90	76	457321.47	011024.31
76	457321.40	011116.90	77	457321.47	011024.31
77	457321.40	011116.90	78	457321.47	011024.31
78	457321.40	011116.90	79	457321.47	011024.31
79	457321.40	011116.90	80	457321.47	011024.31
80	457321.40	011116.90	81	457321.47	011024.31
81	457321.40	011116.90	82	457321.47	011024.31
82	457321.40	011116.90	83	457321.47	011024.31
83	457321.40	011116.90	84	457321.47	011024.31
84	457321.40	011116.90	85	457321.47	011024.31
85	457321.40	011116.90	86	457321.47	011024.31
86	457321.40	011116.90	87	457321.47	011024.31
87	457321.40	011116.90	88	457321.47	011024.31
88	457321.40	011116.90	89	457321.47	011024.31
89	457321.40	011116.90	90	457321.47	011024.31
90	457321.40	011116.90	91	457321.47	011024.31
91	457321.40	011116.90	92	457321.47	011024.31
92	457321.40	011116.90	93	457321.47	011024.31
93	457321.40	011116.90	94	457321.47	011024.31
94	457321.40	011116.90	95	457321.47	011024.31
95	457321.40	011116.90	96	457321.47	011024.31
96	457321.40	011116.90	97	457321.47	011024.31
97	457321.40	011116.90	98	457321.47	011024.31
98	457321.40	011116.90	99	457321.47	011024.31
99	457321.40	011116.90	100	457321.47	011024.31

NOTICE TO TITLE EXAMINERS

1) This plot has been approved subject to an agreement with Anne Arundel County Maryland.

2) No sale or contract of sale is to be made until the necessary improvements have been satisfactorily completed or a contract guaranteed by a surety bond or a certified check has been entered into by the developer as provided in Section III-D-2 or D of the Subdivision Regulations.

3) No Building Permits will be issued for any construction in this development have been complied with.

Agreement Recorded: MAY 18, 1965 LNP 1860 folio 507

OWNERS DEDICATION

We, The Luther Construction Co., Inc. owners of the land shown hereon, hereby adopt this plan of subdivision, establish the minimum building restriction lines and dedicate the streets to public use. The recreational lot is hereby dedicated to the lot owners in this subdivision.

There are no suits, actions of law, leases, liens, mortgages, trusts, easements or rights-of-way affecting the property included in this plan of subdivision.

THE LUTHER CONSTRUCTION CO., INC.

John L. Kasten 1-16-65
John L. Kasten, Pres. Date

Harry H. Magley, Sec. Treas. 1-16-65
Harry H. Magley, Sec. Treas. Date

ENGINEERS CERTIFICATION

I hereby certify that the plan shown hereon is correct, that it is a subdivision of part of the lands conveyed by William Emil Wackenfuss to The Luther Construction Co., Inc. by deed dated March 24, 1964 and recorded among the land records in Liber LNP 1740, folio 442.

Gerald J. Collier 1-16-65
Gerald J. Collier, Reg. L.S. #3325

NOTE:
1) # LOTS 50 TOTAL + RECREATIONAL LOT
2) PRINCIPAL BLDG. SETBACK IS 40.00'

Any lot transferred will have a minimum width and area substantially the same as those shown hereon, and only one principal building per lot. The requirements of Section T2-A, T2-B, T2-C of Article 17, 1947 & 1955 supplement, T2-C and T2-D of the Annotated Code of Maryland, 1958 edition, Title (Clarks of court, sub-title clarks of circuit courts) as far as they relate to the making of this plat and the setting of the markers, have been complied with.

John L. Kasten
John L. Kasten, Pres.

Gerald J. Collier
Gerald J. Collier, Reg. L.S. #3325

Deed of trust between the Kasten Construction Co., Inc. and the First Saving and Loan Association of Glen Burnie with regard to contribution to public water and sewer extensions is recorded in Liber LNP 1782, folio 507 dated Aug. 11, 1964.

HEALTH DEPARTMENT
This plat meets the requirements of the Health Department of Anne Arundel County.

J. Howard Reed 1-16-65
HEALTH OFFICER DATE

OFFICE OF PLANNING & ZONING
This plat has been approved by the Planning and Zoning Office of Anne Arundel County.

Muriel M. Coy 5-18-65
PLANNING & ZONING OFFICER DATE

300 DISTRICT SCALE: 1 INCH = 100 FEET
ANNE ARUNDEL COUNTY, MARYLAND
OCTOBER 6, 1964

GRAPHIC SCALE
GERALD J. COLLIER
REG. LAND SURVEYOR N#3325

ANNE ARUNDEL COUNTY CIRCUIT COURT (Subdivision Plats, AA) Plat 1860, Plat Book 33, p. 85, MSA 95A 1235, 3760. Date available 1965/05/16. Printed 04/01/1965.