



**MRB PEB STRUCTURE
PVT LTD**

ABOUT MRB



MRB is one of the growing PEB and General Steel Structure makers from Tamil Nadu.



MRB known for its premium quality, and it aims to offer cost-effective solution to customer across the country.



MRB specializes in Design, Structural Steel Fabrication, Supply & Erection of PEB and ensuring timely handover of the projects



MRB have many prestigious Pre-Engineered Buildings projects accomplished to the complete satisfaction of our clients,



MRB products spread across the vast expanse of our country.

PEB & GENERAL STRUCTURES



APPLICATION

- ❖ Factories
- ❖ Warehouses
- ❖ Multi Storey Buildings
- ❖ High Rise Buildings
- ❖ Sports Complex
- ❖ Railway Stations
- ❖ Malls & Super Markets
- ❖ Commercial Showrooms
- ❖ Office Buildings
- ❖ Parking Sheds, etc

ABOUT US

MRB PEB STRUCTURE PVT LTD is a leading PEB (Pre- Engineered Buildings) solutions company that has its Regd Office in Viluppuram, Branch Office in Chennai and Fabrication Unit in Pondicherry & Villupuram, TN. With Sales and Service operations across India, MRB has marquee clients in all the regions of the country. Our customers include global technology leaders and consulting companies that see the value in our products and services. MRB today has the advantage of being part of brands that has a strong track record in product quality and reliability over 20 years.

Our products comply with the highest standards of quality, and we evolve to cater to a changing world around us by innovating constantly. It is our endeavor to help our customer achieve the highest level of comfort by consuming the least amount of energy with an objective to help build a sustainable environment. We take immense pride in collaborating with trusted global partners while still making what we can in India, to create a local ecosystem of partners and suppliers.

MRB VISION:

To be a leader in the development of sustainable and innovative mechanical engineering solutions that address the evolving needs of our customers and contribute to a better world

MRB MISSION:

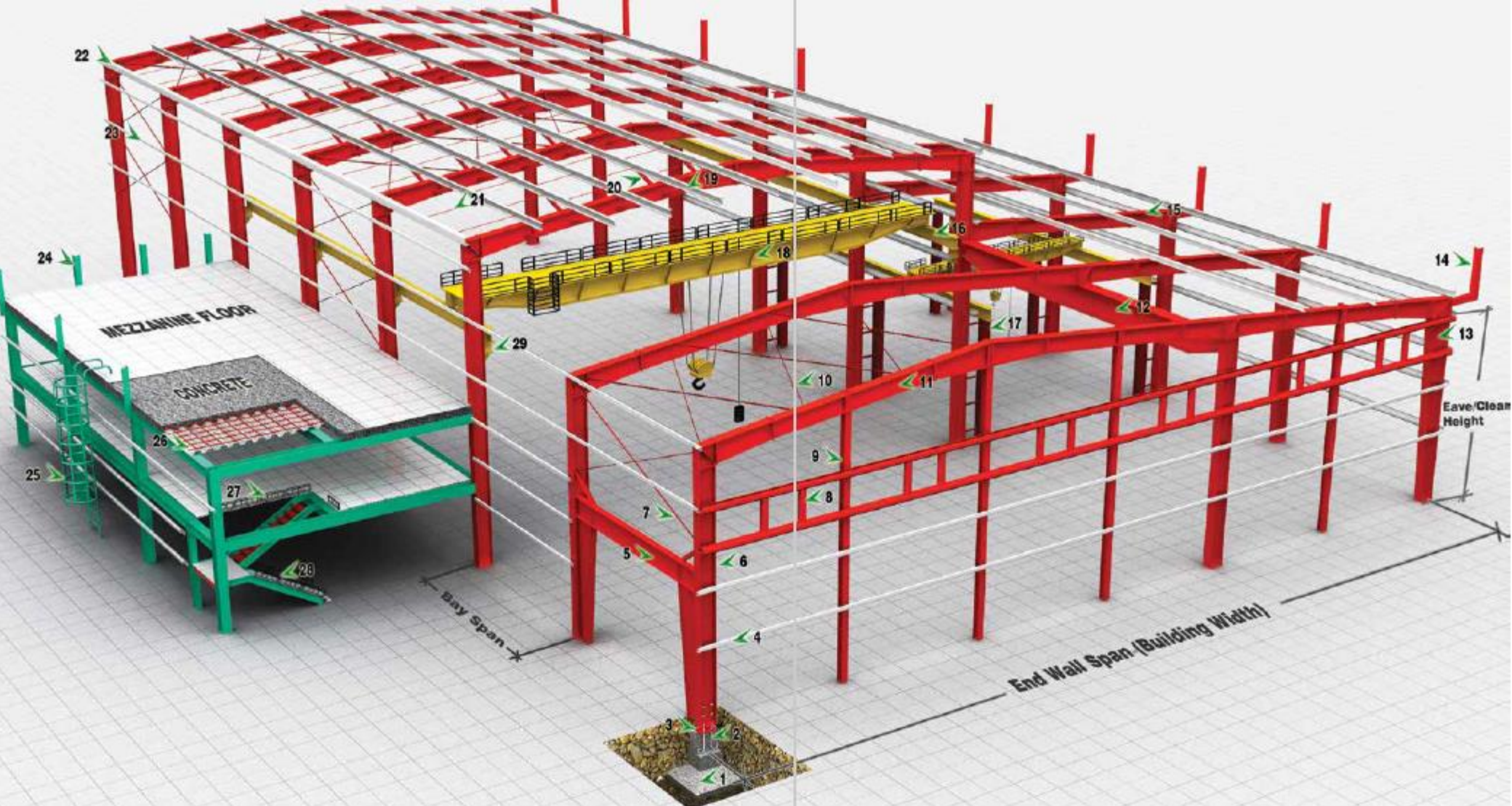
To use our expertise in mechanical engineering to design and develop high-quality products and building solutions that meet the needs of our customers, while striving for continuous improvement and innovation.

ESTEEMED CLIENTS

	 madras pharma			
	 SARA LEATHER INDUSTRIES LEATHER TANNERY			
				
				
				



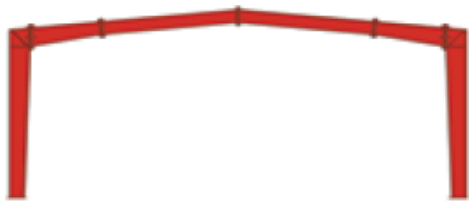
- | | | | |
|----------------------|-------------------------------|----------------------|------------------------------|
| 1. Roof Panel | 8. Ridge Ventilator | 15. Single Walk Door | 22. Roof Monitor |
| 2. Wall Panel | 9. Power Ventilator | 16. Curved Eave | 23. Double Walk Door |
| 3. Canopy | 10. Eave Gutter | 17. Sandtrap Louver | 24. Roof Extension |
| 4. Roll Up Door | 11. Louver with Bird Mesh | 18. Corner Trim | 25. Return Downspout |
| 5. Double Slide Door | 12. Masonry Trim | 19. Eave Trim | 26. Brick Wall |
| 6. Rake Trim | 13. Window with Insect Screen | 20. Flush Fascia | 27. Wall Light |
| 7. Sky Light | 14. Downspout | 21. Strip Skylight | 28. Curved Cantilever Fascia |



- | | | | |
|----------------------|-------------------------------|-------------------|------------------------|
| 1. Concrete Footing | 8. Framed Opening | 15. Lean to Frame | 22. Eave Strut |
| 2. Anchor Bolts | 9. End Wall Wind Column | 16. Crane Beam | 23. Side Wall Girt |
| 3. Base Plate | 10. Roof Bracing | 17. Crane Column | 24. Flush Fascia Frame |
| 4. End Wall Girt | 11. Main Frame Rafter | 18. EOT Crane | 25. Cage Ladder |
| 5. Portal Bracing | 12. Jack Beam | 19. Roof Purlin | 26. Deck Panel |
| 6. Main Frame Column | 13. Window with Insect Screen | 20. Flange Brace | 27. Hand Rail |
| 7. Wall Bracing | 14. Cantilevered Fascia Frame | 21. Sag Rod | 28. Stair Case |
| | | | 29. Crane Bracket |

BASIC FRAMING SYSTEMS (PRIMARY MEMBERS)

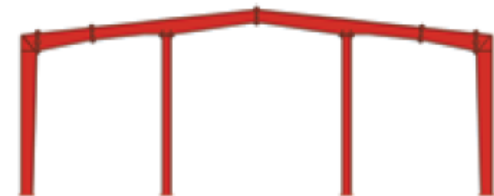
Primary members are the main load carrying and support members of Pre-Engineered Building. The Main frame members include Columns, Rafters and other supporting members. The shape and size of these members vary based on the application and requirements. The frame is erected by bolting the end plates of connecting sections together



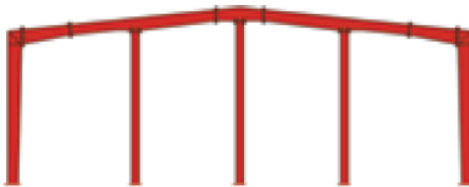
Clear Span (CS)



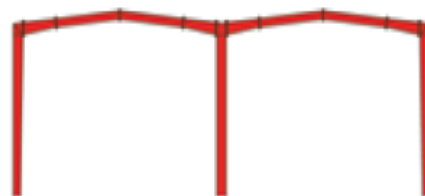
Multi Span "1" (MS-1)



Multi Span "2" (MS-2)



Multi Span "3" (MS-3)



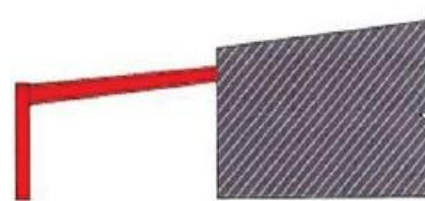
Multi Gable (MG)



Single Slope (SS)



Roof System (RS)



Lean To (LT)



Arched Span (AS)

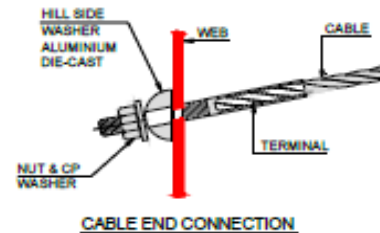
SECONDARY MEMBERS

Secondary structural framing refers to purlins, girts, eave struts, wind bracing, flange bracing, base angles and other miscellaneous structural parts.



C-SECTION

C-Sections are 200 mm deep with a 85 mm flange and 24 mm stiffening lip.



CABLE BRACING

Cable bracing is designed to ensure the stability of the building against forces in the longitudinal and lateral direction due to wind, cranes & earthquakes.

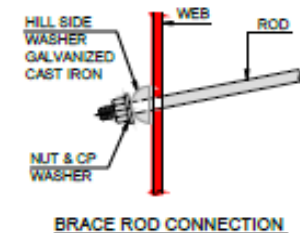
PURLINS & GIRTS

These are roll formed Z sections, 200 mm deep with 74 mm flanges with 16 mm stiffening lip.



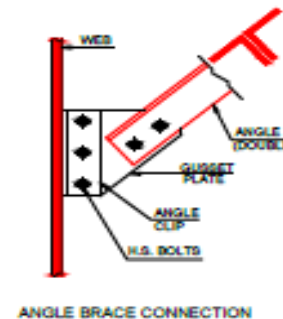
ROD BRACING

Rod bracing shall have a minimum yield strength of 250 Mpa.



EAVE STRUT

Eave struts are 200 mm deep with a 104 mm wide top flange and 118 mm wide bottom flange.

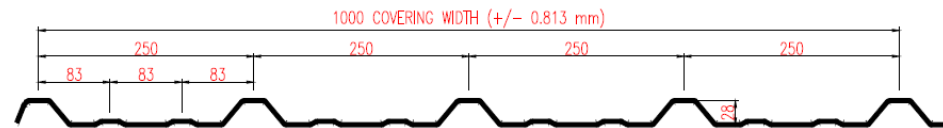


ANGLE BRACING

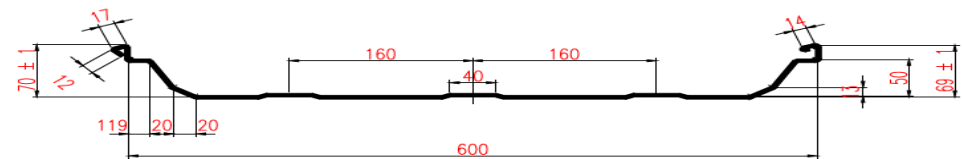
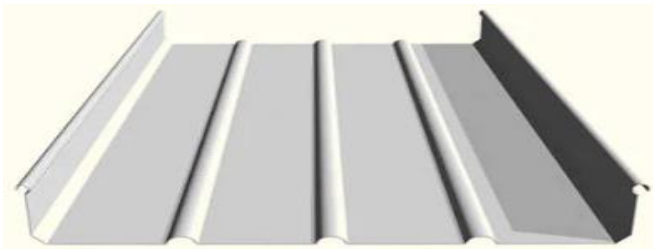
Angle bracing are used to withstand the actions of longitudinal forces.

CLADDING SYSTEMS

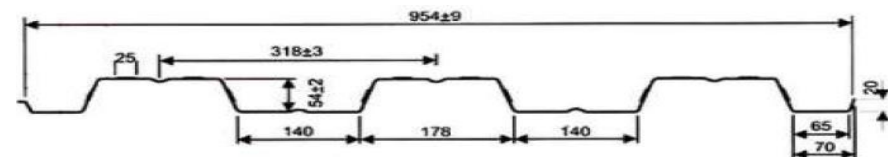
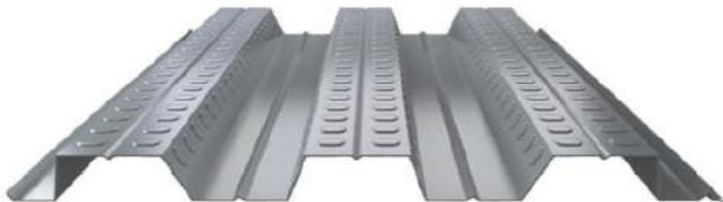
Roofing and Cladding Sheets (Colour Coated Galvalume, Colour Coated Galvanized and Bare Galvalume) are used with standardized quality. The bearing leg design permits easier installation and maintenance, supports thicker layer of insulation and allows easier curvature for aesthetic finish.



Standing Seam Panel Systems with double lock standing seam, eliminates the risk of leakage due to the concealed fastening system and provides excellent protection in all weather condition.



Deck Panels are used in high rise buildings, office buildings and mezzanine floors in industrial buildings and warehouses. These decks can be used as a permanent shuttering to support the wet concrete and help in creating composite slabs and floor beams.



PRODUCT RANGE



INSULATED PANEL

This panel offers long life, low maintenance and excellent weather tightness. Overlap joints eliminates the possibility of water leakage along side joints.



CONCEALED SANDWICH PANEL

This panel have interlocking tongue and groove joints with fasteners concealed within the joints.



INSULATION

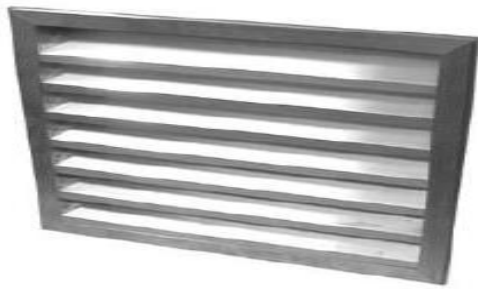
These rockwool and polynum insulations are used under the roof sheet with mesh. This method is cost effective and reliable.



TRIMS & FLASHING

Standard trims and flashing match the same specification as panel materials. They are furnished for rakes, corners, eaves, and framed openings to provide weather tightness and a smooth finished appearance.

ACCESSORIES



LOUVERS

Louvers are with overlapping blades allowing free air flow. Size is 1m x 1m, incorporating insect screen.



TURBO VENTILATORS

Turbo ventilators used for air circulation available in throat width 600 mm.



RIDGE VENTILATORS

These are available with bird screen with a standard length of 3000 mm. Throat widths are available in 300 mm and 600 mm.



SKY LIGHTS & WALL LIGHTS

Made of translucent GRP to match roof and wall panels, with an estimated light transmitting capacity of 60%



FASTENERS

High strength bolts used for main connection. And self drilling screws are available in carbon steel and stainless steel.



SEALANTS

Silicon Sealants are used to provide a weather seal and has excellent gap-filling properties.

MRB PROJECTS



Sara Leathers, Katpadi



Eskay Cartons, Manimangalam



MR Protech, Bangalore



Arkema Peroxide, Cuddalore



Ammachi Masala, Puducherry



TNSAMB, Sular



Maruthi Moulding, Kundrathur



TNSAMB, Rameshwaram



Icon Commercial Complex, Hosur

WHY MRB ?



20 Years of experience in Sales, Marketing, Design & Manufacturing & Customer Excellence.



200+ Multinationals Clients, Govt Organizations and more than 1000 Transactions with Happy Customers



Sales & Marketing branches across the country and fabrication units, Warehouses across state.

BENIFITS OF PEB ?

- ❖ Easy Future Expansion
- ❖ Voluminous Space
- ❖ Seismic & Wind Resistance
- ❖ Quick Delivery & Construction
- ❖ Less Cost Than Civil Construction
- ❖ PEB Can be Dismantled & Reused



MRB PEB STRUCTURE PVT LTD.,



Regd Office & Factory: Plot No:288/6C2B,
Vanur, Viluppuram, Tamil Nadu – 605109.



Factory II: No:4, 2nd Cross Street, Pandiyan
Nagar, Villianur, Puduchery - 605110.



Branch Office: 119, Mullai Street, Periyar
Pathai, Vadapalani, Chennai - 600094.



+91 90424 84098, +91 95245 92008



md@mrbstructure.in



dijon@mrbstructure.in



www.mrbstructure.in