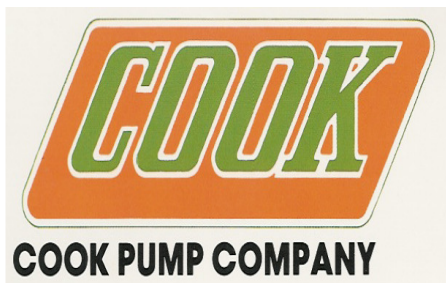


Illustrated
PARTS LIST
FOR

COOK PUMPING UNITS



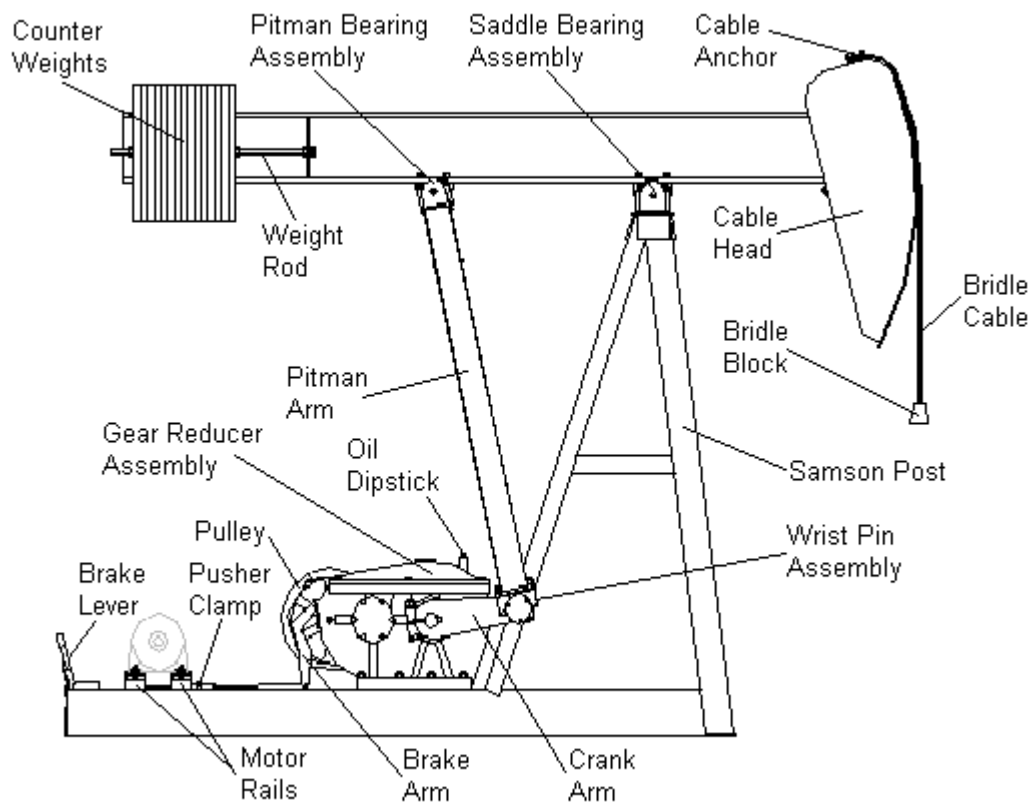
- DEPENDABLE
 - ECONOMICAL
 - PRECISION BUILT



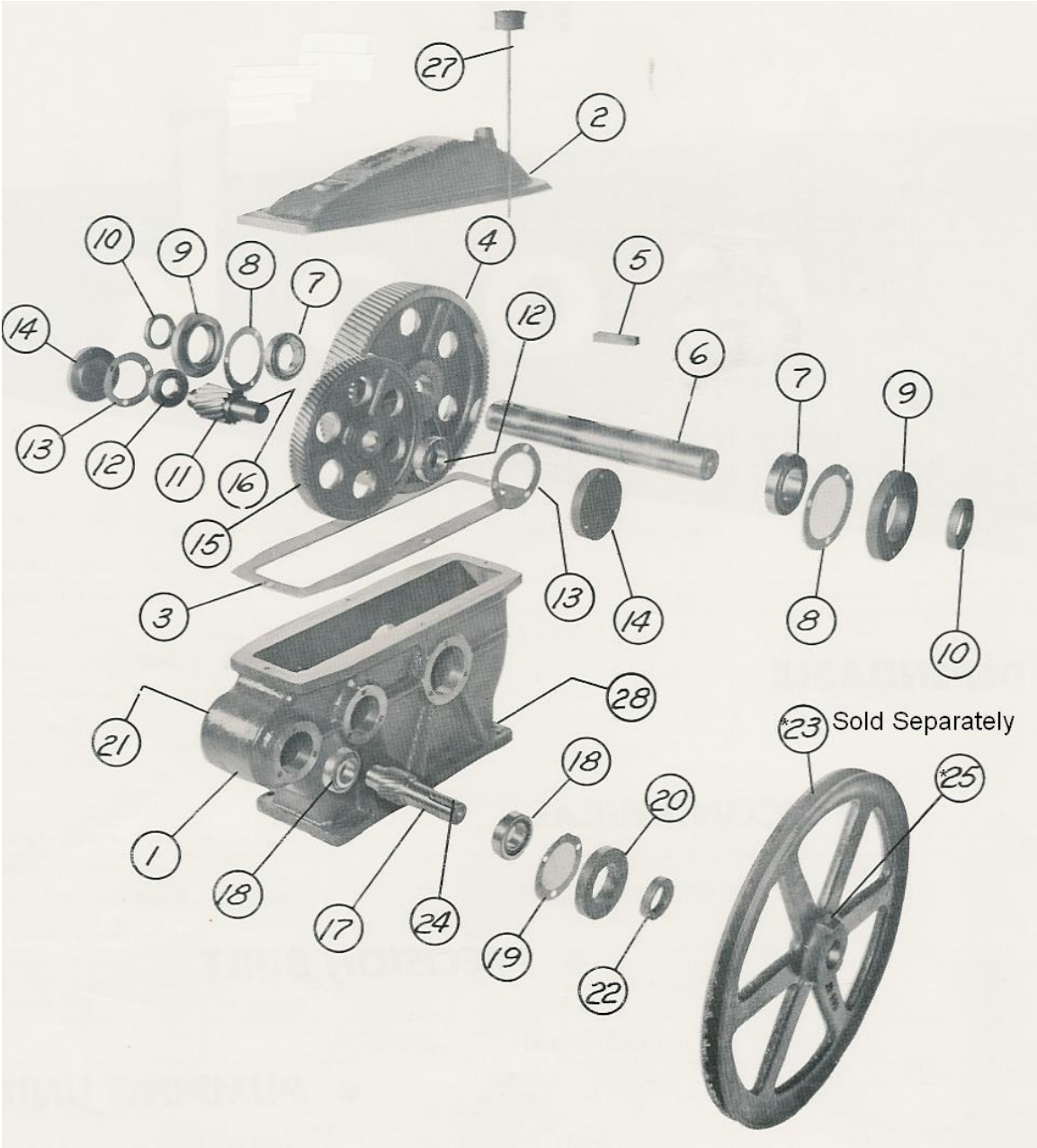
Cook Pump Company
1400 West 12th St, PO Box 498
Coffeyville Kansas 67337 USA
tel: 620-251-0880 fax: 620-251-7535
www.CookPumpingJacks.com Cook@hit.net

Cook Pump Jack Final Assembly

Welcome to our new Illustrated Parts List. Included in this booklet are what have become the most commonly requested parts items for Cook Pump Jacks, sizes 3D-10 through 40. In addition, many accessories and parts not shown in this booklet are also available, simply call our office and our sales department will gladly assist you. We hope you find our new parts booklet helpful.



COOK GEAR REDUCER ASSEMBLY COMPLETE



Cook 3D-10 & 4D-13 Gear Reducer Assembly

Cut No	Description	Qty Reqd	Part Number	Weight Each
--	Gear Reducer Assembly	1	SUB04GBA	240
1.	Gear Box	1	CSTJC400	115
2.	Lid	1	CSTJC401	24
3.	Lid Gasket	1	GT004LIDGKT	
--	Lid Bolt	4	FT3/8X1.25CPS	
--	Lock Washer	4	FT3/8LO/WA	
4.	Bull Gear	1	GER04-JC410	42
5.	Bull Gear Key	1	MC-KEYSTK1/2" x 2-3/8"	
6.	Main Shaft	1	GER04M/S	13-1/2
7.	Main Shaft Bearing Race	2	BRG362 Cup	
--	Main Shaft Bearing	2	BRG368 Cone	
8.	Main Shaft Retainer Plate Gasket		GT5-004-200223	
9.	Main Shaft Retainer Plate	2	CSTJC406	1-1/2
10.	Main Shaft Oil Seal	2	SEL472492	1/8
--	Main Shaft Retainer Plate Bolt	6	FT3/8X1.25CPS	
--	Lock Washer	6	FT3/8LO/WA	
11.	Intermediate or Low Speed Pinion	1	GER04LSP	4
12.	Intermediate Pinion Bearing Race	2	BRG14276 Cup	
--	Intermediate Pinion Bearing	2	BRG14137A Cone	
13.	Intermediate Retainer Plate Gasket		GT5-004-200219	
14.	Intermediate Retainer Plate	2	CSTJC718	1-1/2
--	Intermediate Retainer Plate Bolt	6	FT3/8X1.25CPS	
--	Lock Washer	6	FT3/8LO/WA	
15.	Intermediate or High Speed Gear	1	GER04-JC409	22
16.	Intermediate Gear Key	1	MC-KEYSTK1/2" x 1-1/2"	
17.	High Speed Pinion	1	GER04HSP	2-1/2
18.	High Speed Pinion Bearing Race	2	BRG14276 Cup	
--	High Speed Pinion Bearing	2	BRG14137A Cone	
19.	High Speed Retainer Plate Gasket		GT5-004-200219	
20.	High Speed Retainer Plate	1	CSTJC405	1
21.	3/4" Pipe Plug	1	FT3/4SQHDPIPL	
22.	High Speed Pinion Oil Seal	1	SEL473215	1/8
--	High Speed Retainer Bolt	3	FT3/8X1.25CPS	
--	Lock Washer	3	FT3/8LO/WA	
23.	Pulley (1-AB)*sold separately	1	CSTJC508	23
24.	Pulley Key	1	MC-KEYSTK3/8" x 1-3/4"	
25.	Pulley Bolt	1	FT3/8X1SQHD	
27.	Oil Dipstick	1	1/2" Square Head	
28.	Oil Drain Plug	1	FT3/4SQHDPIPL	
--	SAE 90EP Oil	2	MC-OIL	13
--	Pressure Relief Valve	1	FT#1FTG	

Cook 16 Gear Reducer Assembly

Cut No	Description	Qty Reqd	Part Number	Weight Each
--	Gear Reducer Assembly	1	SUB16GBA	342
1.	Gear Box	1	CSTJC500	145
2.	Lid	1	CSTJC501	40
3.	Lid Gasket	1	GT016LIDGKT	
--	Lid Bolt	4	FT3/8X1.25CPS	
--	Lock Washer	4	FT3/8LO/WA	
4.	Bull Gear	1	GERJC510	72
5.	Bull Gear Key	1	MC-KEYSTK 5/8" x 3"	
6.	Main Shaft	1	GER16M/S	28-1/2
7.	Main Shaft Bearing Race	2	BRG28920 Cup	
--	Main Shaft Bearing	2	BRG28985 Cone	
8.	Main Shaft Retainer Plate Gasket		GT5-016-200201	
9.	Main Shaft Retainer Plate	2	CSTJC505	3
10.	Main Shaft Oil Seal	2	SEL413246	
--	Main Shaft Retainer Plate Bolt	8	FT3/8X1.25CPS	
--	Lock Washer	8	FT3/8LO/WA	
11.	Intermediate or Low Speed Pinion	1	GER16LSP	7
12.	Intermediate Pinion Bearing Race	2	BRG2720 Cup	
--	Intermediate Pinion Bearing	2	BRG2788 Cone	
13.	Intermediate Retainer Plate Gasket		GT5-016-200197	
14.	Intermediate Retainer Plate	2	CSTJC506	1-1/2
--	Intermediate Retainer Plate Bolt	8	FT3/8X1.25CPS	
--	Lock Washer	8	FT3/8LO/WA	
15.	Intermediate or High Speed Gear	1	GERJC509	22
16.	Intermediate Gear Key	1	MC-KEYSTK 3/8" x 1-3/8"	
17.	High Speed Pinion	1	GER16HSP	3-1/2
18.	High Speed Pinion Bearing Race	2	BRG2720 Cup	
--	High Speed Pinion Bearing	2	BRG2793 Cone	
19.	High Speed Retainer Plate Gasket		GT5-016-200197	
20.	High Speed Retainer Plate	1	CSTJC504	1
21.	Pipe Plug	1	FT3/4SQHDPIPL	
22.	High Speed Pinion Oil Seal	1	SEL473215	1/8
--	High Speed Retainer Bolt	4	FT3/8X1.25CPS	
--	Lock Washer	4	FT3/8LO/WA	
23.	Pulley (3-AB) *sold separately	1	CSTJC608	23
24.	Pulley Key	1	MC-KEYSTK 3/8" x 2-1/4"	
25.	Pulley Bolt	1	FT1/2x2-1/2CPS	
27.	Oil Dipstick	1	1/2" Square Head	
28.	Oil Drain Plug	1	FT3/4SQHDPIPL	
--	SAE 90EP Oil	2.5	MC-OIL	16-1/4
--	Pressure Relief Valve	1	FT#1FTG	

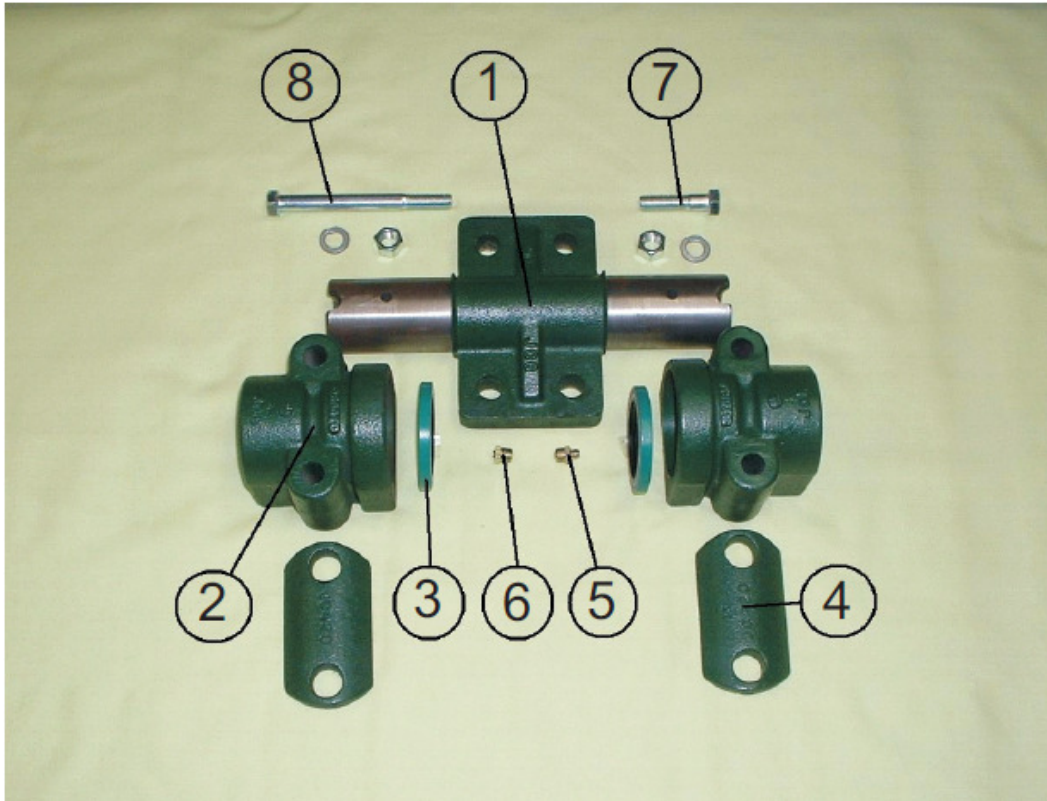
Cook 25 Gear Reducer Assembly

Cut No	Description	Qty Reqd	Part Number	Weight Each
--	Gear Reducer Assembly	1	SUB25GBA	553
1.	Gear Box	1	CST980170	260
2.	Lid	1	CST980171	76
3.	Lid Gasket	1	GT025LIDGKT	
--	Lid Bolt	4	FT1/2X1.5CPS	
--	Lock Washer	4	FT1/2LO/WA	
4.	Bull Gear	1	GER25JC710	87
5.	Bull Gear Key	1	MC-KEYSTK 5/8" x 3-1/2"	
6.	Main Shaft	1	GER25M/S	53-1/2
7.	Main Shaft Bearing Race	2	BRG492A Cup	3-1/2
--	Main Shaft Bearing	2	BRG495AX Cone	3-1/2
8.	Main Shaft Retainer Plate Gasket		GT5-025-100107	
9.	Main Shaft Retainer Plate	2	CSTJC706	6
10.	Main Shaft Oil Seal	2	SEL415013	
--	Main Shaft Retainer Plate Bolt	8	FT1/2x1.5CPS	
--	Lock Washer	8	FT1/2LO/WA	
11.	Intermediate or Low Speed Pinion	1	GER25LSP	18
12.	Intermediate Pinion Bearing Race	2	BRG382A Cup	1-1/2
--	Intermediate Pinion Bearing	2	BRG385 Cone	1-1/2
13.	Intermediate Retainer Plate Gasket		GT5-025-100108	
14.	Intermediate Retainer Plate	2	CSTJC704	5-1/4
--	Intermediate Retainer Plate Bolt	8	FT1/2x1.5CPS	
--	Lock Washer	8	FT1/2LO/WA	
15.	Intermediate or High Speed Gear	1	GERJC709	22
16.	Intermediate Gear Key	1	MC-KEYSTK1/2" x 2-1/8"	
17.	High Speed Pinion	1	GER25HSP	10
18.	High Speed Pinion Bearing Race	2	BRG2720 Cup	
--	High Speed Pinion Bearing	2	BRG2793 Cone	
19.	High Speed Retainer Plate Gasket		GT5-016-200197	
20.	High Speed Retainer Plate	1	CSTJC504	1
21.	Pipe Plug	1	FT3/4SQHDPIPL	
22.	High Speed Pinion Oil Seal	1	SEL473215	1/8
--	High Speed Retainer Bolt	4	FT3/8x1.25CPS	
--	Lock Washer	4	FT3/8LO/WA	
23.	Pulley (3-AB) *sold separately	1	CSTJC608	62-1/2
24.	Pulley Key	1	MC-KEYSTK 3/8" x 2-1/4"	
25.	Pulley Bolt	1	FT1/2x2.5CPS	
27.	Oil Dipstick	1	1/2" Square Head	
28.	Oil Drain Plug	1	FT3/4SQHDPIPL	
--	SAE 90EP Oil	2	MC-OIL	13
--	Pressure Relief Valve	1	FT#1FTG	

Cook 40 Gear Reducer Assembly

Cut No	Description	Qty Reqd	Part Number	Weight Each
--	Gear Reducer Assembly	1	SUB40GBA	1,145
1.	Gear Box	1	CST980067	377
2.	Lid	1	CST980068	77
3.	Lid Gasket	1	040LIDGKT	
--	Lid Bolt	4	FT1/2X1.5CPS	
--	Lock Washer	4	FT1/2LO/WA	
4.	Bull Gear	1	GER980073	195
5.	Bull Gear Key	1	MC-KEYSTK3/4" x 5-1/8"	
6.	Main Shaft	1	GER40M/S	
7.	Main Shaft Bearing Race	2	BRG592A Cup	
--	Main Shaft Bearing	2	BRG593 Cone	
8.	Main Shaft Retainer Plate Gasket		GT5-040-800417	
9.	Main Shaft Retainer Plate	2	CSTJC906	
10.	Main Shaft Oil Seal	2	SEL415146	
--	Main Shaft Retainer Plate Bolt	12	FT1/2x1.5CPS	
--	Lock Washer	12	FT1/2LO/WA	
11.	Intermediate or Low Speed Pinion	1	GER40LSP	
12.	Intermediate Pinion Bearing Race	2	BRG27620 Cup	
--	Intermediate Pinion Bearing	2	BRG27684 Cone	
13.	Intermediate Retainer Plate Gasket		GT5-040-800417	
14.	Intermediate Retainer Plate	2	CSTJC904	
--	Intermediate Retainer Plate Bolt	12	FT1/2x1.5CPS	
--	Lock Washer	12	FT1/2LO/WA	
15.	Intermediate or High Speed Gear	1	GER980073	59
16.	Intermediate Gear Key	1	MC-KEYSTK5/8" x 2"	
17.	High Speed Pinion	1	GER40HSP	
18.	High Speed Pinion Bearing Race	2	BRG2720 Cup	
--	High Speed Pinion Bearing	2	BRG2793 Cone	
19.	High Speed Retainer Plate Gasket		GT5-016-200197	
20.	High Speed Retainer Plate	1	CSTJC504	1
21.	Pipe Plug	1	FT3/4SQHDPIPL	
22.	High Speed Pinion Oil Seal	1	SEL473215	1/8
--	High Speed Retainer Bolt	4	FT3/8x1.25CPS	
--	Lock Washer	4	3/8LO/WA	
23.	Pulley (3-AB) *sold separately	1	CSTJC608	62-1/2
24.	Pulley Key	1	MC-KEYSTK3/8" x 2-1/4"	
25.	Pulley Bolt	1	FT1/2x2.5CPS	
27.	Oil Dipstick	1	1/2" Square Head	
28.	Oil Drain Plug	1	FT3/4SQHDPIPL	
--	SAE 90EP Oil	2	MC-OIL	13
--	Pressure Relief Valve	1	FT#1FTG	

Cook Saddle Bearing Assembly



SUB04SBA - Size 3 & 4 Saddle Bearing Assembly

Item	Description	Part No.	Qty	Wt. Ea.
1.	Saddle Housing	CSTJC6	1	11.5
2.	Saddle Bearing Cap	CSTJC5	2	6.0
3.	Saddle Bearing Oil Seal	SEL472492	2	0.1
5.	Grease Zerk	FT1/8ZERK	1	
6.	Pressure Relief Valve	FT5#FTG	1	
--	NLGI #00 Lithium Base EP Grease	MC-LUB/00	0.4	0.4
==	==	==	==	==

These Items Available Separately:

4.	Saddle Spacer	CSTJC420	2	0.7
7.	Bolt – Saddle Housing to Walking Beam			
	1/2" x 2" Hex Head Bolt	FT1/2X2CPS	4	
	1/2" Lock Washer	FT1/2LO/WA	4	
	1/2" Hex Nut	FT1/2HEXNUT	4	
8.	Bolt – Saddle Brg to Samson Post			
	1/2" x 4-1/2" Hex Head Bolt	FT1/2X4.5CPS	4	
	1/2" Lock Washer	FT1/2LO/WA	4	
	1/2" Hex Nut	FT1/2HEXNUT	4	

Cook Saddle Bearing Assembly

SUB16SBA - Size 16 Saddle Bearing Assembly

Item	Description	Part No.	Qty	Wt. Ea.
1.	Saddle Housing	CSTJC513	1	20.0
2.	Saddle Bearing Cap	CSTJC511	2	11.5
3.	Saddle Bearing Oil Seal	SEL416664	2	0.1
5.	Grease Zerk	FT1/8ZERK	1	
6.	Pressure Relief Valve	FT5#FTG	1	
--	NLGI #00 Lithium Base EP Grease	MC-LUB/00	0.4	0.4
==	==	==	==	==

These Items Available Separately:

4.	Saddle Spacer	CSTJC512	2	1.0
7.	Bolt – Saddle Housing to Walking Beam			
	5/8" x 2 1/2" Hex Head Bolt	FT5/8X2.5CPS grd8	4	
	5/8" Wedge Washer	FT5/8WE/WA	4	
	5/8" Lock Washer	FT5/8LO/WA	4	
	5/8" Hex Nut	FT5/8HEXNUT	4	
8.	Bolt – Saddle Brg to Samson Post			
	5/8" x 5" Hex Head Bolt	FT5/8X5CPS grd8	4	
	5/8" Lock Washer	FT5/8LO/WA	4	
	5/8" Hex Nut	FT5/8HEXNUT	4	

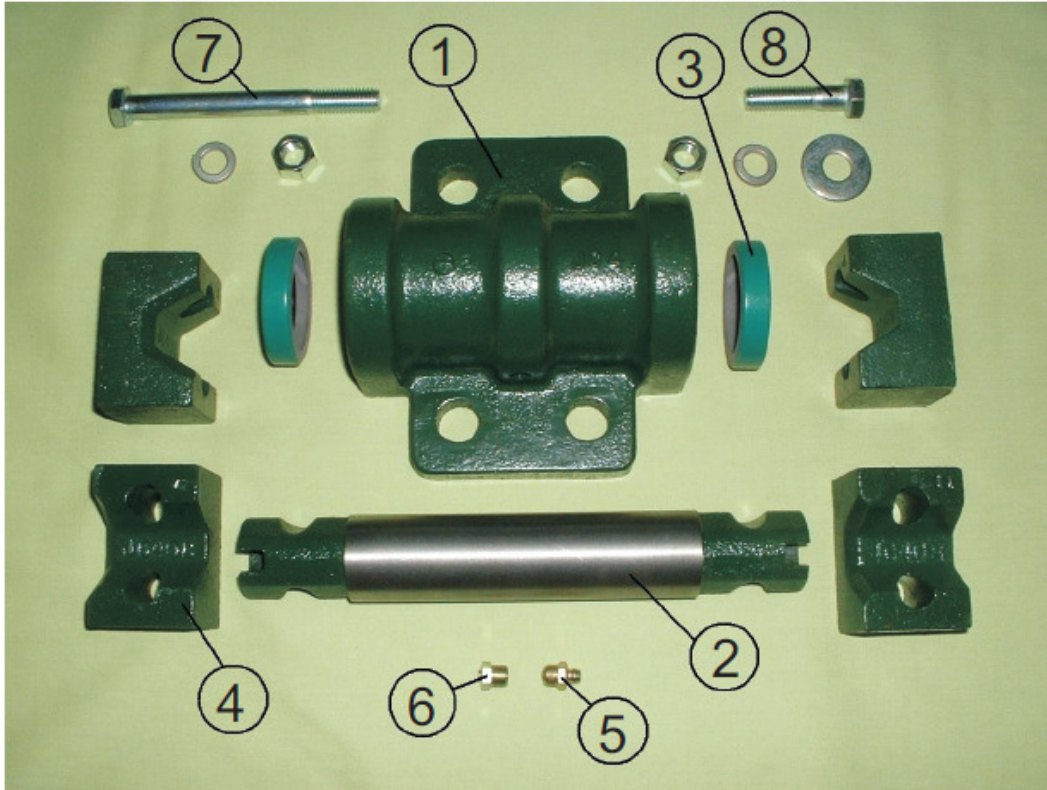
SUB25-40SBA - Size 25-40 Saddle Bearing Assembly

Item	Description	Part No.	Qty	Wt. Ea.
1.	Saddle Housing	CSTJC713	1	39.0
2.	Saddle Bearing Cap	CSTJC711	2	15.5
3.	Saddle Bearing Oil Seal	SEL415146	2	0.1
5.	Grease Zerk	FT1/8ZERK	1	
6.	Pressure Relief Valve	FT5#FTG	1	
--	NLGI #00 Lithium Base EP Grease	MC-LUB/00	0.4	0.4
==	==	==	==	==

These Items Available Separately:

4.	Saddle Spacer	CSTJC720	4	0.7
7.	Bolt – Saddle Housing to Walking Beam			
	5/8" x 4" Hex Head Bolt (40)	FT5/8X4CPS grd 8	4	
	5/8" x 3.5" Hex Head Bolt (25)	FT5/8X3.5CPS grd 8	4	
	5/8" Wedge Washer (40 only)	FT5/8WE/WA	4	
	5/8" Lock Washer	FT5/8LO/WA	4	
	5/8" Hex Nut	FT5/8HEXNUT	4	
8.	Bolt – Saddle Brg to Samson Post			
	5/8" x 5-1/2" Hex Head Bolt	FT5/8X5.5CPS grd8	4	
	5/8" Lock Washer	FT5/8LO/WA	4	
	5/8" Hex Nut	FT5/8HEXNUT	4	

Cook Pitman Bearing Assembly



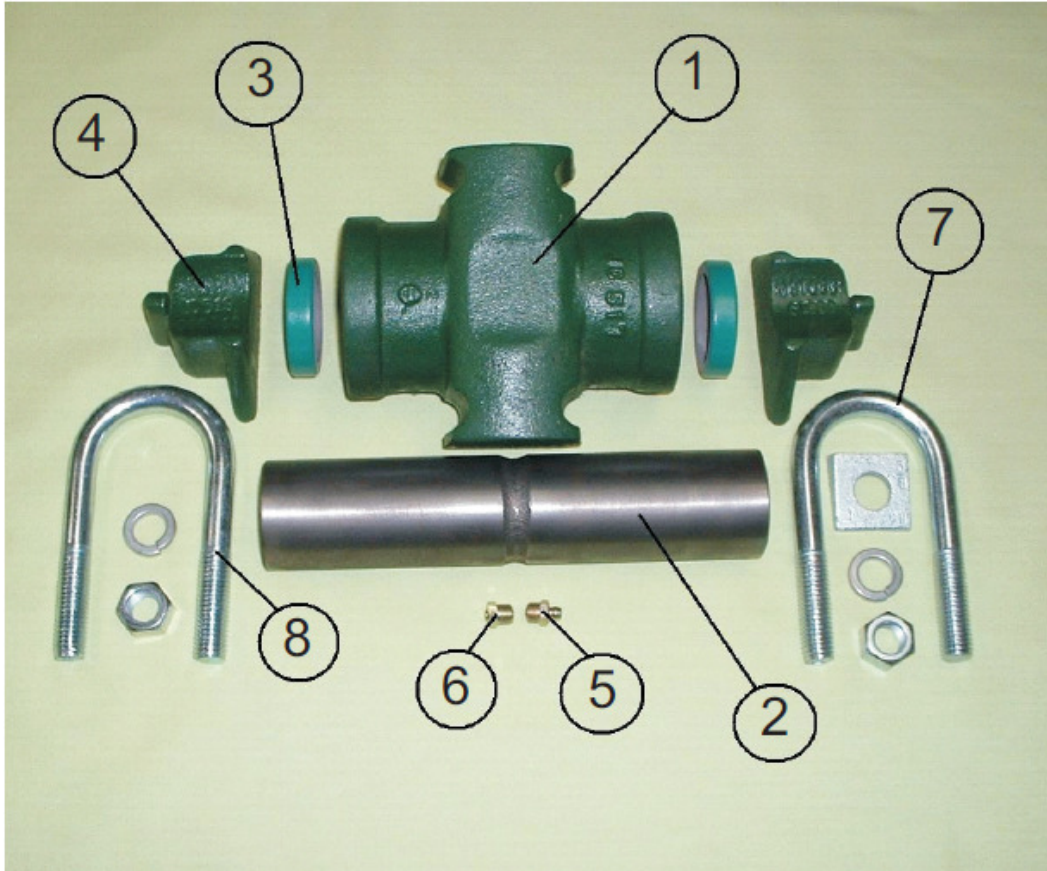
SUB04PBA - 3D-10 & 4D-13 Pitman Bearing Assembly

Item	Description	Part No.	Qty	Wt. Ea.
1.	Pitman Bearing Housing	CSTJC4	1	9.0
2.	Pitman Pin	CSTJC407	1	3.5
3.	Pitman Bearing Oil Seal	SEL450136	2	0.1
5.	Grease Zerk	FT1/8ZERK	1	0.1
6.	Pressure Relief Valve	FT5#FTG	1	0.1
--	NLGI #00 Lithium Base EP Grease	MC-LUB/00	0.4	0.4
==	==	==	==	==

These Items Available Separately:

4.	Pitman Pin Block	CSTJC408	4	1.2
7.	U Bolt – Pitman Pin Block to Pitman Header			
	1/2" x 5" Hex Head Bolt	FT1/2X5CPS	4	
	1/2" Lock Washer	FT1/2LO/WA	4	
	1/2" Hex Nut	FT1/2HEXNUT	4	
8.	U Bolt – Pitman Bearing to Walking Beam			
	1/2" x 2" Hex Head Bolt	FT1/2X2CPS	4	
	1/2" Flat Washer	FT1/2FL/WA	4	
	1/2" Lock Washer	FT1/2LO/WA	4	
	1/2" Hex Nut	FT1/2HEXNUT	4	

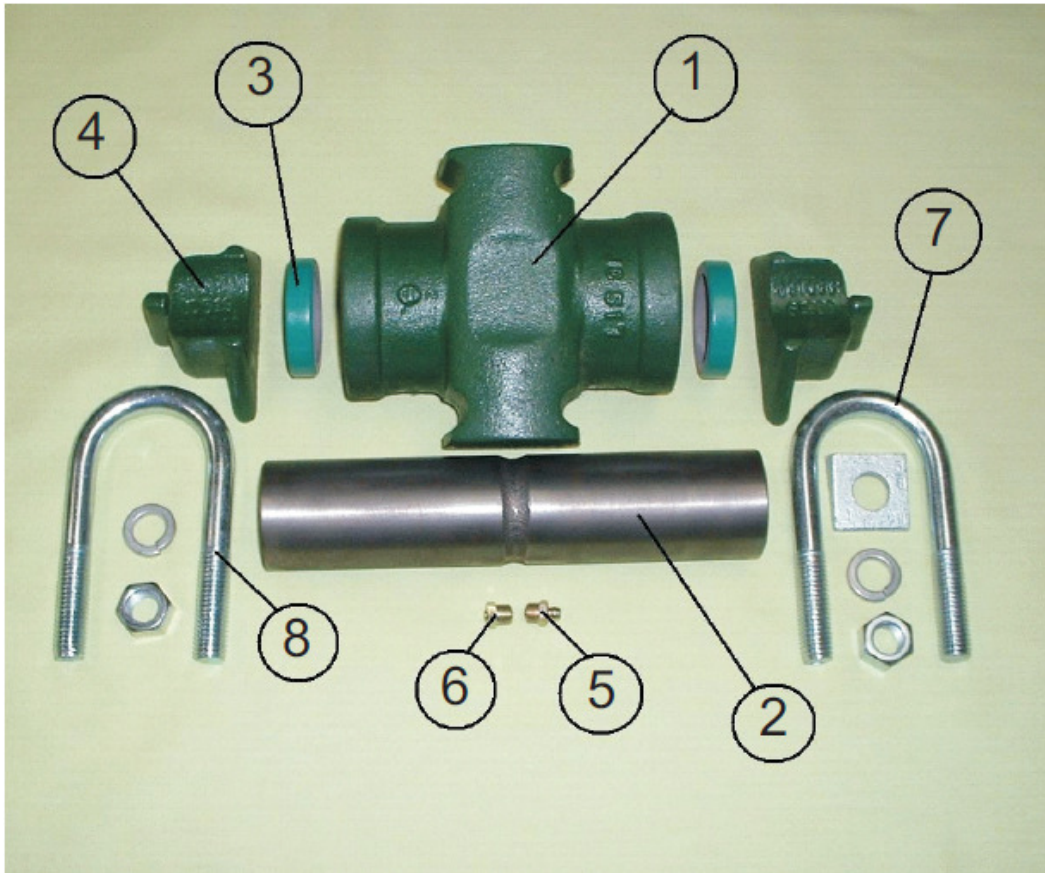
Cook Pitman Bearing Assembly



SUB16PBA - Cook 16 Pitman Bearing Assembly

Item	Description	Part No.	Qty	Wt. Ea.
1.	Pitman Bearing Housing	CSTJC517	1	13.0
2.	Pitman Pin	CSTJC607	1	7.7
3.	Pitman Bearing Oil Seal	SEL472492	2	0.1
5.	Grease Zerk	FT1/8ZERK	1	0.1
6.	Pressure Relief Valve	FT5#FTG	1	0.1
--	NLGI #00 Lithium Base EP Grease	MC-LUB/00	0.4	0.4
== ==				
These Items Available Separately:				
4.	Pitman Pin Block	CSTJC519	2	1.7
7.	U Bolt – Pin to Pitman Header			
	5/8" x 5" U-Bolt	FT5/8X5U-BLT	2	
	5/8" Lock Washer	FT5/8LO/WA	4	
	5/8" Hex Nut	FT5/8HEXNUT	4	
8.	U Bolt – Bearing to Walking Beam			
	5/8" x 5" U- Bolt	FT5/8X5U-BLT	2	
	5/8" Wedge Washer	FT5/8WE/WA	4	
	5/8" Lock Washer	FT5/8LO/WA	4	
	5/8" Hex Nut	FT5/8HEXNUT	4	

Cook Pitman Bearing Assembly



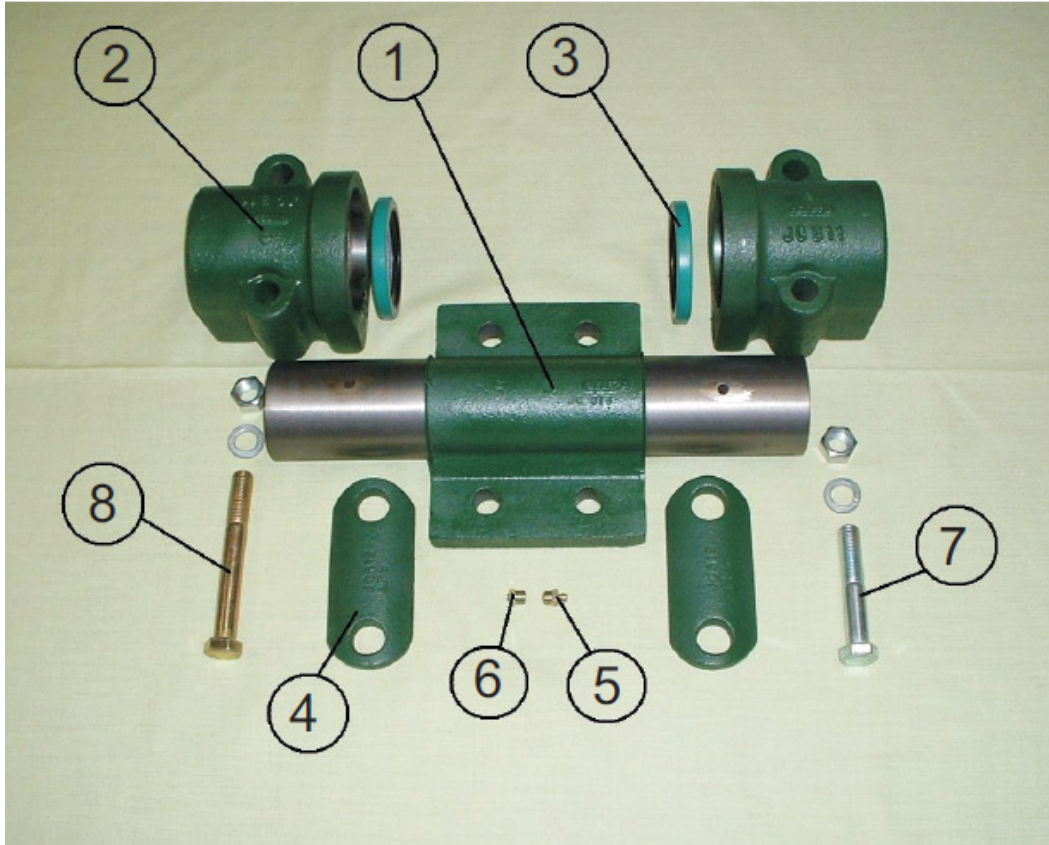
SUB25PBA - Cook 25 Pitman Bearing Assembly

Item	Description	Part No.	Qty	Wt. Ea.
1.	Pitman Bearing Housing	CSTJC717	1	18.0
2.	Pitman Pin	CSTJC707	1	9.5
3.	Pitman Bearing Oil Seal	SEL415147	2	0.1
5.	Grease Zerk	FT1/8ZERK	1	0.1
6.	Pressure Relief Valve	FT5#FTG	1	0.1
--	NLGI #00 Lithium Base EP Grease	MC-LUB/00	0.8	0.8
== ==				

These Items Available Separately:

4.	Pitman Pin Block	CSTJC719	2	1.7
7.	U Bolt – Pin to Pitman Header			
	5/8" x 5" U-Bolt	FT5/8X5U-BLT	2	
	5/8" Lock Washer	FT5/8LO/WA	4	
	5/8" Hex Nut	FT5/8HEXNUT	4	
8.	U Bolt – Bearing to Walking Beam			
	5/8" x 5" U-Bolt	FT5/8X5U-BLT	2	
	5/8" Lock Washer	FT5/8LO/WA	4	
	5/8" Hex Nut	FT5/8HEXNUT	4	

Cook Pitman Bearing Assembly



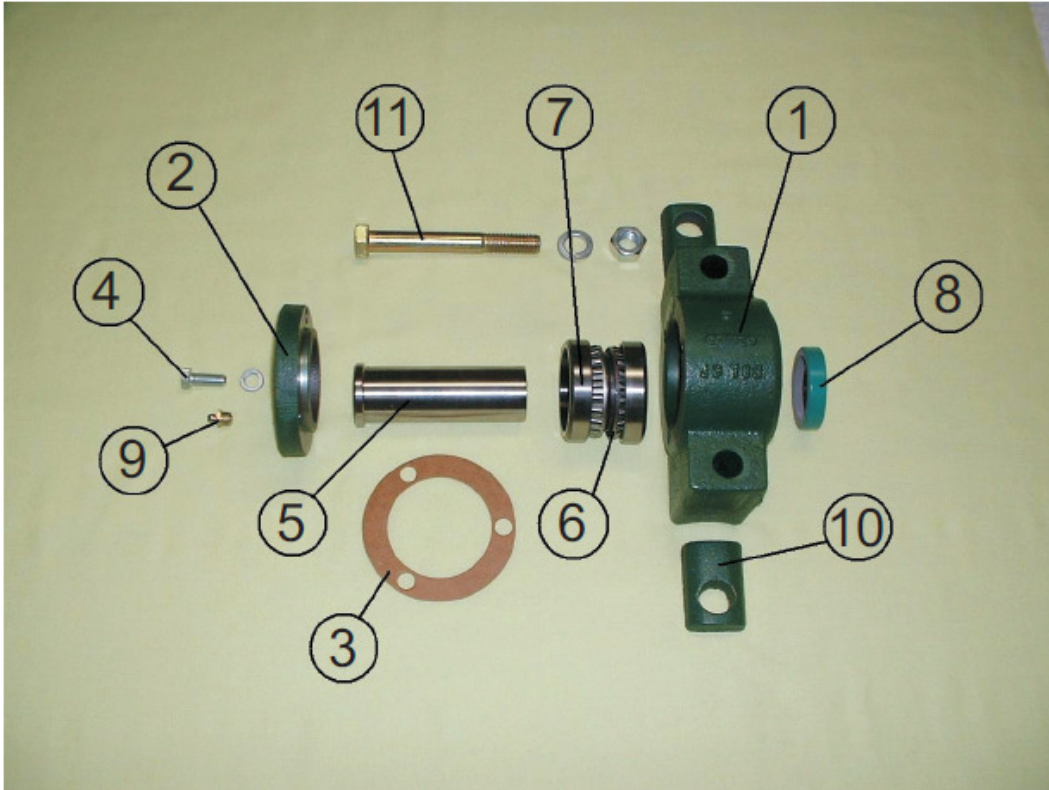
SUB40PBA - 40 Pitman Bearing Assembly

Item	Description	Part No.	Qty	Wt. Ea.
1.	Pitman Bearing Housing	CSTJC613	1	25.0
2.	Pitman Bearing Caps	CSTJC511	2	11.5
3.	Pitman Bearing Oil Seal	SEL416664	2	0.2
5.	Grease Zerk	FT1/8ZERK	1	0.1
6.	Pressure Relief Valve	5# Pressure Relief	1	0.1
--	NLGI #00 Lithium Base EP Grease	MC-LUB/00	0.8	0.8
==	==	==	==	==

These Items Available Separately:

4.	Pitman Spacer	CSTJC512	2	1.0
7.	Bolt – Pitman Bearing Cap to Pitman Header			
	5/8" x 5" Hex Head Bolt	FT5/8X5 grd8	4	
	5/8" Lock Washer	FT5/8LO/WA	4	
	5/8" Hex Nut	FT5/8HEXNUT	4	
8.	Bolt – Pitman Housing to Walking Beam			
	5/8" x 3" Hex Head Bolt	FT5/8X3" grd8	4	
	5/8" Wedge Washer	FT5/8WE/WA	4	
	5/8" Lock Washer	FT5/8LO/WA	4	
	5/8" Hex Nut	FT5/8HEXNUT	4	

Cook Wrist Pin Bearing Assembly



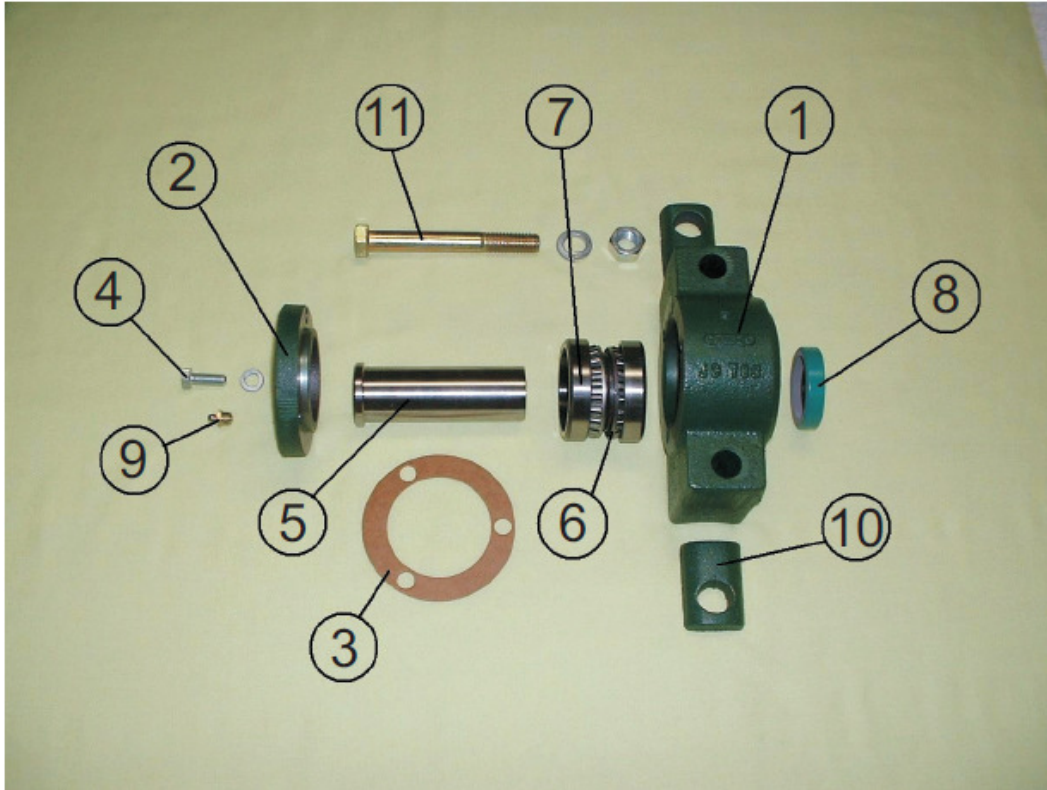
SUB3-33WPA - Size 3, 4, 16, 25 & 33 Wrist Pin Assembly

Item	Description	Part No.	Qty	Wt. Ea.
1.	Wrist Pin Housing	CSTJC703	1	9.5
2.	Wrist Pin Retainer Plate	CSTJC718	1	1
3.	Wrist Pin Gasket	GT5-004-200219		
4.	Retainer Plate Bolt	FT3/8X1.25CPS	3	
	Retainer Plate Lock Washer	FT3/8LO/WA	3	
5.	Wrist Pin	GER3-33W/P	1	1.5
6.	Wrist Pin Bearing	BRG13685 Cone	2	1
7.	Wrist Pin Bearing Race	BRG13621 Cup	2	0.5
8.	Wrist Pin Oil Seal	SEL450136	1	0.1
9.	Grease Zerk	FT1/8ZERK	1	
--	Multi-Purpose Lithium Base EP Grease	MC-LUB/#2	0.13	0.13
==	==	==	==	==

These Items Available Separately:

10.	Wrist Pin Spacer	CSTJC712	2	0.2
11.	Bolt – Wrist Pin Housing to Pitman Arm			
	5/8" x 5" Hex Head Bolt	FT5/8X5CPS grd8	2	
	5/8" Lock Washer	FT5/8LO/WA	2	
	5/8" Hex Nut	FT5/8HEXNUT	2	

Cook Wrist Pin Bearing Assembly



SUB40-57WPA - Size 40 & 57 Wrist Pin Assembly

Item	Description	Part No.	Qty	Wt. Ea.
1.	Wrist Pin Housing	CSTJC903	1	11
2.	Wrist Pin Retainer Plate	CSTJC918	1	4
3.	Wrist Pin Gasket	GT5-004-200223		
4.	Retainer Plate Bolt	FT3/8X1.25CPS	3	
--	Retainer Plate Lockwasher	FT3/8LO/WA	3	
5.	Wrist Pin	GER40W/P	1	1.5
6.	Wrist Pin Bearing	BRG368 Cone	2	1
7.	Wrist Pin Bearing Race	BRG362 Cup	2	0.5
8.	Wrist Pin Oil Seal	SEL472492	1	0.1
9.	Grease Zerk	FT1/8ZERK	1	
--	Multi-Purpose Lithium Base EP Grease	MC-LUB/#2	0.13	0.13
== ==				
These Items Available Separately:				
10.	Wrist Pin Spacer	CSTJC712	2	0.2
11.	Bolt – Wrist Pin Housing to Pitman			
	3/4" x 5" Hex Head Bolt	FT5/8X5CPS grd8	2	
	3/4" Lock Washer	FT5/8LO/WA	2	
	3/4" Hex Nut	FT5/8HEXNUT	2	