



**ATAS International, Inc.**  
Sustainable Building Envelope Technology

# PRODUCT CATALOG

Metal Wall & Roof Systems, Ceilings,  
Interiors, Accessories, & More



# INNOVATE YOUR VISION

An American, family-owned company with global reach, and a reputation built on 60 years of quality craftsmanship and knowledgeable staff. ATAS is proud to be a Top Workplaces award recipient for many years.

## MORE THAN A MANUFACTURER

- Leading manufacturer of sustainable building envelope products
- Exterior and interior applications
- Commercial and residential buildings
- Four manufacturing locations in the US: Allentown, PA (2), University Park, IL and Mesa, AZ
- Affiliate company – BRIGHTSMITH Coaters provides coil coating and laminating in Morrisville, PA and post-painting in Trenton, NJ for single source solutions

## QUALITY

- International quality system standard
- ATAS Allentown, PA facility - certified to ISO 9001:2015 with design
- ATAS Mesa, AZ facility - certified to ISO 9001:2015
- BRIGHTSMITH Morrisville, PA & Trenton, NJ facilities - certified to ISO 9001:2015
- Ensures customer focus and continuous improvements
- Results in responsible company growth

## SELECTION

- Aluminum
- Zinc
- Metallic coated steel
- Stainless steel
- 70% PVDF paint coating
- Copper

## ONLINE TOOLS

- Visit [www.atas.com](http://www.atas.com) to access tools, news, and up-to-date content
- Submittal builder
- Architectural specifications
- Interactive color chart
- Color chip requests
- Product installation videos
- Spec writer

## SUSTAINABLE

- Reused and recycled materials
- Scrap wood donated to the community
- Rooftop solar arrays on three of our facilities
- InSpire® wall system on two of our facilities

ON THE COVER: VERSA-LOK IN TITANIUM & CLASSIC BRONZE  
The Mastlight

# SUPPORT SERVICES

## INDUSTRY EXPERTISE

In addition to superior products, choosing ATAS means your project comes equipped with industry expertise. ATAS provides a team of knowledgeable market specific experts to assist you with all aspects of your design, from discovery to installation. To ensure project success, we have dedicated product and market specialists to focus on key segments of our product line:

- Perimeter Edge
- Roof & Wall System Design
- Corporate Accounts
- Dealer Development
- Interior Applications
- Insulated Metal Panels
- National Original Equipment Manufacturer (OEM) Accounts
- Solar Technology

## TECHNICAL SUPPORT

- Design and development assistance
- Product specification guidance
- Detailing and installation support

## CONTINUING EDUCATION

Committed to the industry and our customers, our team of ATAS experts offers a number of continuing education opportunities, including AIA, GBCI and IIBEC approved courses, plant tours, contractor and distributor training, and a wide range of online resources. Visit [www.atas.com](http://www.atas.com) to learn more.

### COURSES

Demystifying Rain Screen Concepts Utilizing Metal Wall Panels  
1 LU/HSW & 1 IIBEC CEH

Design and Testing of Perimeter Edge Metal for Low-Slope Commercial Roofs  
1 LU/HSW & 1 IIBEC CEH

Designing for the Effects of Wind on a Building - Tests and Reality  
1 LU/HSW & 1 IIBEC CEH


Designing with Metal Wall Panels   
1 LU/HSW & 1 IIBEC CEH

Insulated Metal Panels – Creating the Perfect All-In-One Barrier Back Up Wall System  
1 LU/HSW, 1 GBCI CE Hour & 1 IIBEC CEH

Insulated Metal Wall and Roof Panels - High Performing Systems in Design, Sustainability, and Operation  
1 LU/HSW, 1 GBCI CE Hour & 1 IIBEC CEH


Interior Room Acoustics and Sound Control Using Metal Panels  
1 LU/HSW


Metal Coil Coating Technology - Processing and Performance of Prepainted Metal in the Building Products Industry  
1 LU/HSW & 1 IIBEC CEH

Metal Roofing: History, Material, and Application   
1 LU/HSW & 1 IIBEC CEH

Solar Air Heating  
1 LU/HSW & 1 GBCI CE Hour & 1 IIBEC CEH

Sustainable Building Envelopes  
1 LU/HSW, 1 GBCI CE Hour, & 1 IIBEC CEH

Testing and Specifying Metal Roofs in High Wind Areas   
1 LU/HSW & 1 IIBEC CEH

Using Technologically Advanced Metal Building Products in LEED, Net Zero, and Passive Buildings   
1 LU/HSW & 1 GBCI CE Hour

### PLANT TOURS 1.5 LU/HSW

Plant Tour of a Facility which Manufactures Building Envelope Components from Metal

Plant Tour of a Metal Coil Coating Facility

 denotes that a course is available online



# CONTENTS

## METAL WALL PANELS

Concealed Fastener .....	4-15
Modular Wall Panels .....	16-25
Metal Composite Material .....	22
Exposed Fastener.....	26-33
Stretch Curved & Crimp Curved.....	34-35
Mix & Match.....	36-37

## PERFORATED METAL

Gaten Series™ .....	38
---------------------	----

## SOLAR AIR HEATING

InSpire® .....	39
----------------	----

## INSULATED METAL PANELS

Insulated Metal Wall Panels .....	40-45
Insulated Metal Roof Panels .....	43-45

## METAL ROOF PANELS

Standing Seam & Batten Seam .....	46-55
Modular Roof Panels .....	56-63
Stretch Curved.....	64-65

## INTERIORS, CEILINGS, & SOFFITS

Interior Applications.....	66-67
Suspended Ceiling Systems.....	68-71
Soffits.....	72-73

## PERIMETER EDGE SYSTEMS

Overview .....	74-75
Fascia.....	76
Coping.....	76
Supplemental Edge Systems.....	76
Rainware & Water Control.....	77

## ARCHITECTURAL ACCENTS

Overview .....	78-79
Custom Fabricated.....	80
Column Covers & Beam Wraps.....	80
Accessories .....	80
Elite Trims .....	81
Secondary Framing Components.....	81

## SUSTAINABLE COMPONENTS

Solar Ready Roof Systems .....	82-83
Energy Efficient Paint Coatings & Cool Roofing .....	82-83
Above Sheathing Ventilation .....	82-83

## COLOR SELECTION & CHARTS

Stock, Matte, Premium Colors .....	84-85
Natural Metals, PVDF Prints .....	86



## CONCEALED FASTENER WALL PANELS

### OVERVIEW

With uninterrupted shadow lines, and a sleek, continuous appearance, concealed fastener wall panels offer design solutions for any number of project objectives:

- Vertical or horizontal applications
- Ribbed and corrugated panel styles
- Standing seam; batten, plank, or barn board styles
- With or without perforations (pg. 38)
- Curved applications
- ...and more.

In addition to the vast selection of styles and material choices, a number of the ATAS profiles can be mixed and matched seamlessly (pg. 37), with single or multi-color design palettes.

All concealed fastener wall panels share the following specifications, unless otherwise noted:

### MAXIMUM PANEL LENGTH

Transportation limitations and/or product and project design considerations

### PERFORATIONS AVAILABLE

Yes

### FINISH

70% PVDF

### COLORS

Choice of over 40 stock colors  
Custom colors and finishes available\*

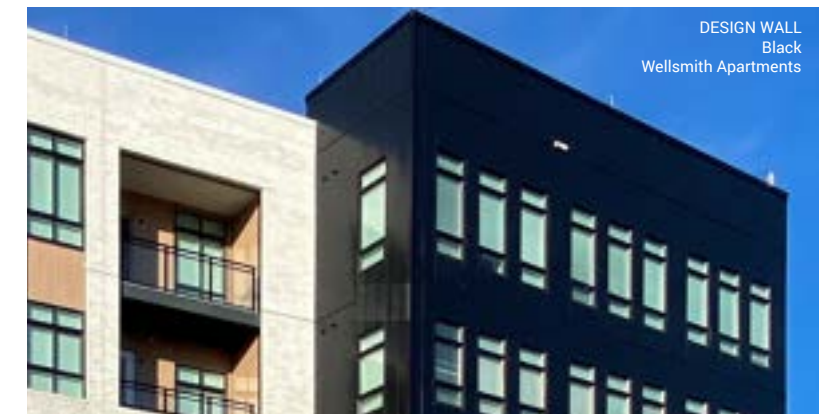
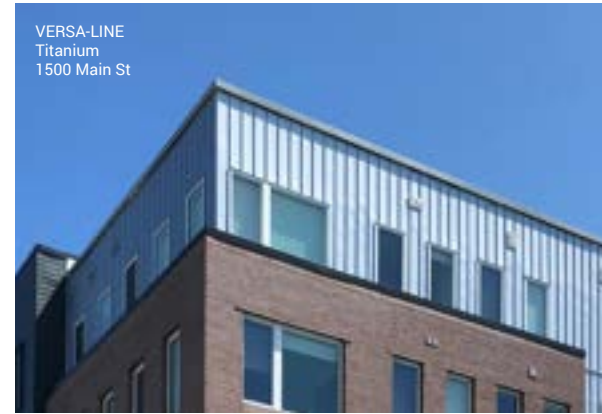
### ANODIZED

Clear Satin  
Dark Bronze

### ACCESSORIES

A complete line of trims available in matching colors, gauge, and finish or as specified

\*Subject to minimum quantities and extended lead time. Inquire for material and panel coverage availability.



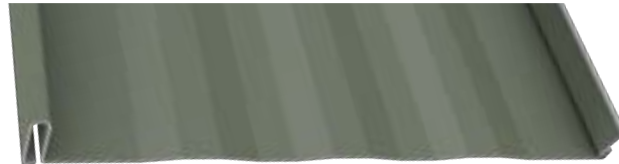




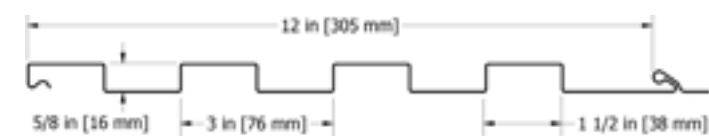
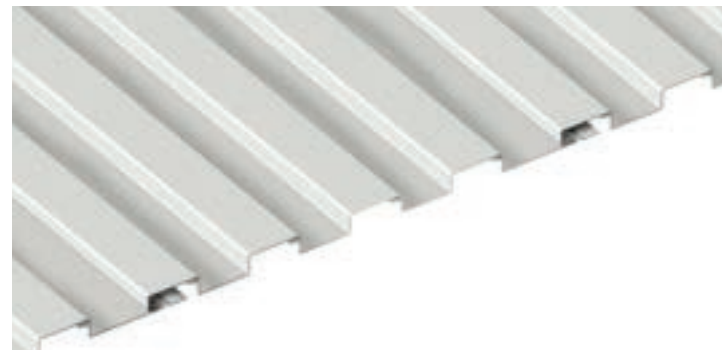
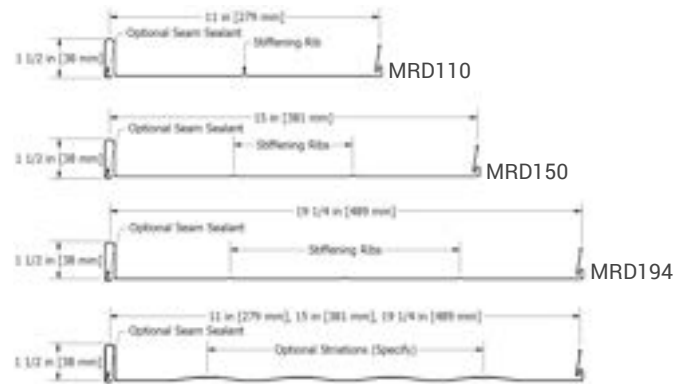
Stiffening Ribs



Without Ribs



Striations



## DUTCH SEAM®

SKU: MRD110, MRD150, MRD194

### MATERIAL

.032, .040 aluminum  
24, 22\* ga. metallic coated steel  
24 ga. 55% Al-Zn alloy coated steel with acrylic coating  
16, 20 oz. copper\*  
.8 mm zinc\* (MRD110 only)

### PANEL SPECS

Coverage: 11", 15", 19 1/4"  
(stiffening ribs standard, specify without ribs or with striations)  
Minimum Length: 2'-0"  
Seam Height: 1 1/2"

### TEXTURE

Smooth or Stucco Embossed

[www.atas.com/dutchseamwalls](http://www.atas.com/dutchseamwalls)

## METAFOR™

SKU: MFP120

### MATERIAL

.032, .040, .050 aluminum  
16, 20 oz. copper\*  
.8, 1.0 mm zinc\*  
.0197 classic & tin matte stainless steel\*

### PANEL SPECS

Coverage: 12"  
Minimum Length: 3'-0"  
Depth: 5/8"

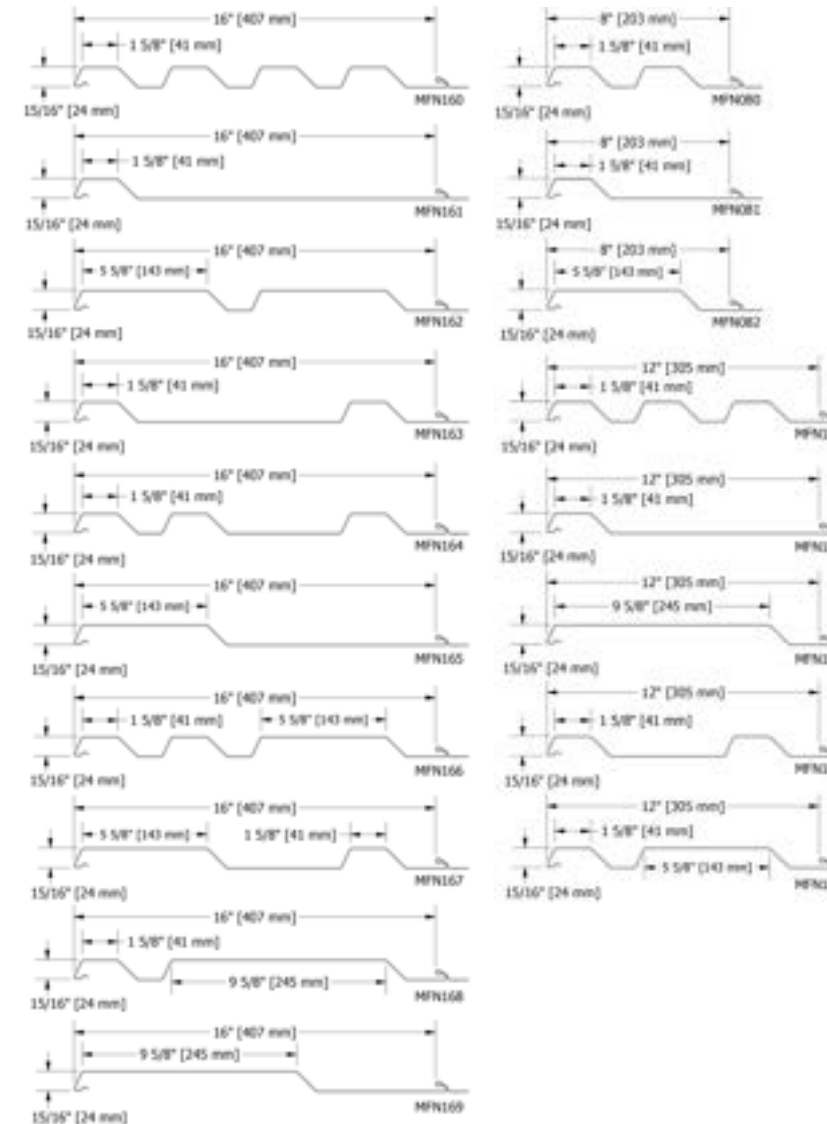
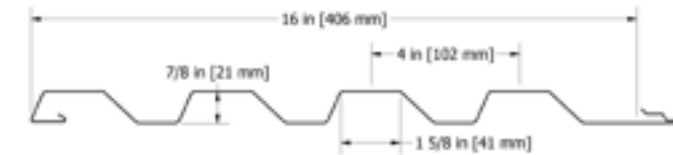
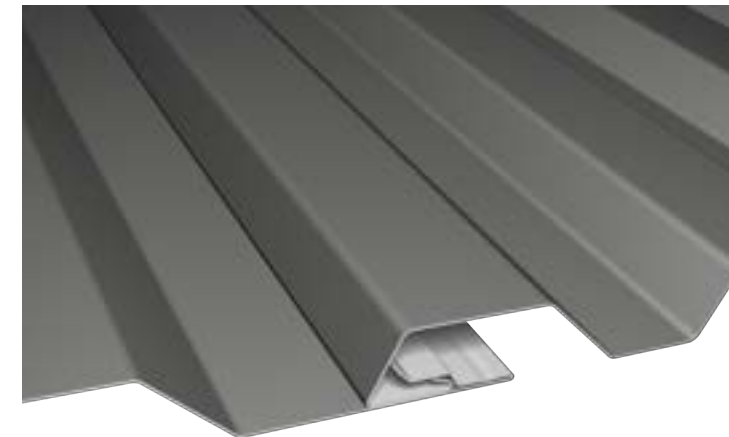
### AVAILABLE

Stretch Curving

### TEXTURE

Smooth or Stucco Embossed

[www.atas.com/metafor](http://www.atas.com/metafor)



## RIGID WALL™

SKU: MFR160

### MATERIAL

.032, .040, .050 aluminum  
24, 22\*, 20\*, 18\* ga. metallic coated steel  
24, 22\*, 20\*, 18\* ga. 55% Al-Zn alloy coated steel with acrylic coating  
1.0 mm zinc\*

### PANEL SPECS

Coverage: 16"  
Minimum Length: 6'-0"  
Depth: 7/8"

### TEXTURE

Smooth or Stucco Embossed

[www.atas.com/rigidwall](http://www.atas.com/rigidwall)

## RIGID WALL II™

SKU: MFN

### MATERIAL

.032, .040, .050 aluminum  
24, 22\*, 20\*, 18\* ga. metallic coated steel  
24, 22\*, 20\*, 18\* ga. 55% Al-Zn alloy coated steel with acrylic coating  
1.0 mm zinc\*

### PANEL SPECS

Coverage: 8", 12", 16"  
Minimum Length: 2'-8"  
Depth: 15/16"

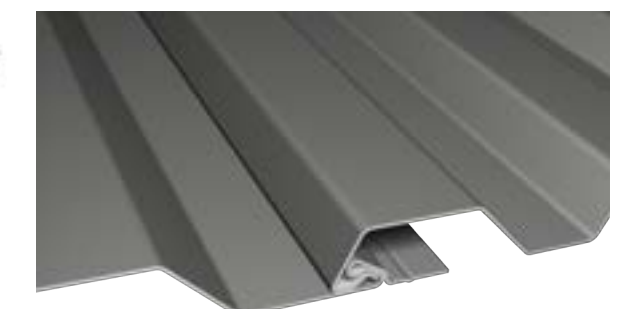
### AVAILABLE

Factory panel pre-notching available.  
Contact ATAS for specifics.

### TEXTURE

Smooth or Stucco Embossed

[www.atas.com/rigidwall2](http://www.atas.com/rigidwall2)





METAFOR  
Titanium  
Harrison Urby Apartments



RIGID WALL II (MFN160)  
Slate Grey  
Fountain Inn High School



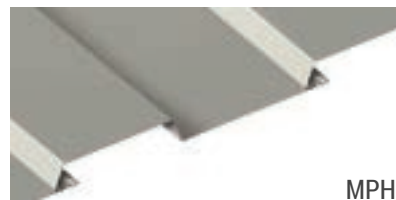
RIGID WALL (MFR160)  
Rocky Grey  
Eureka Springs High School



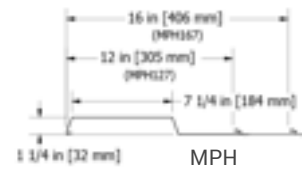
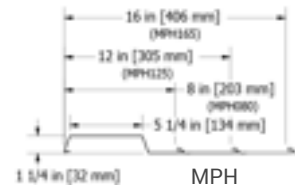
DUTCH SEAM  
Champagne  
CSULB Horn Center



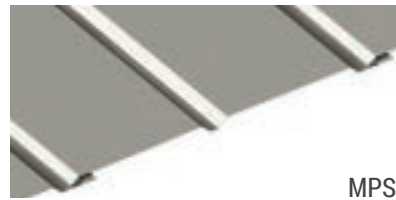
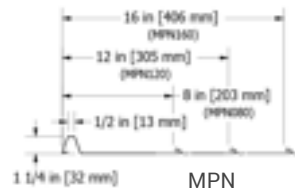




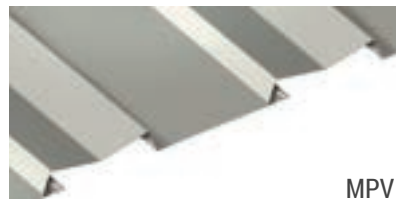
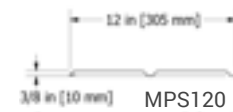
MPH



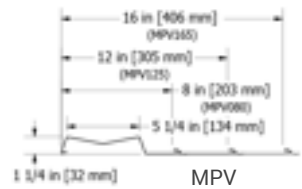
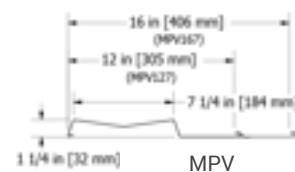
MPN



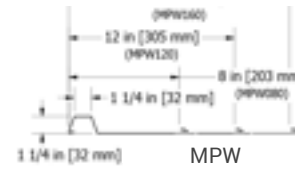
MPS



MPV



MPW



## MULTI-PURPOSE™ PANELS

SKU: MPH, MPN, MPS, MPV, MPW

### MATERIAL

.032, .040 aluminum  
24, 22\* ga. metallic coated steel  
16, 20 oz. copper\*  
.8, 1.0 mm zinc\*  
.0197 classic & tin matte stainless steel\*  
(MPS: .032 aluminum only)

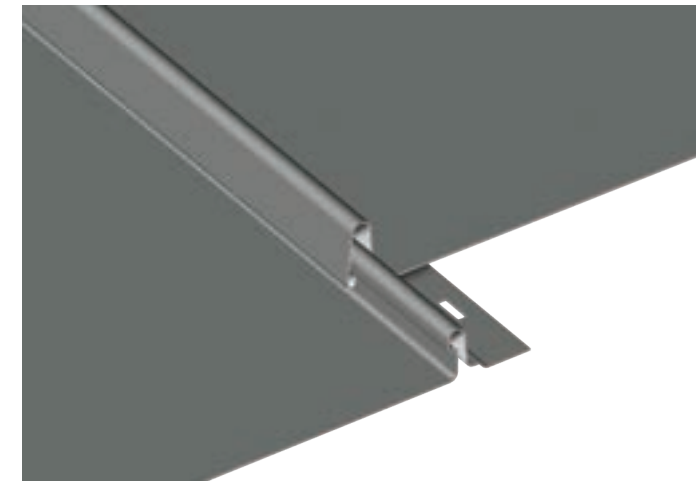
### PANEL SPECS

Coverage: 8", 12", 16"  
Minimum Length: 3'-0"  
Depth: 1 1/4", 3/8" (MPS only)

### TEXTURE

Smooth, Stucco Embossed, Wood Grain Embossed (24 ga. metallic coated steel, .032 aluminum & .040 aluminum only)

[www.atas.com/multipurpose](http://www.atas.com/multipurpose)



## VERSA-LINE

SKU: VSN120, VSN160

### MATERIAL

.032, .040 aluminum  
16 oz. copper\*<sup>^</sup>  
.7, .8 mm zinc\*<sup>^</sup>  
<sup>^</sup>Inquire for available widths

### PANEL SPECS

Coverage: 12 3/8", 16 3/8" | Custom widths available with a minimum of 8" and maximum of 20 3/8"\*  
Striations optional.  
Minimum Length: 2'-0"  
Maximum Length: 20'-0"  
Depth: 1"

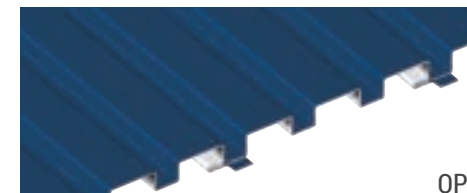
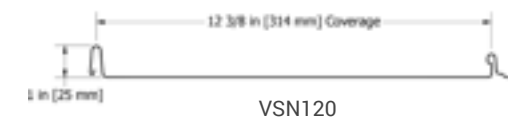
### AVAILABLE

Factory panel pre-notching available. Contact ATAS for specifics.

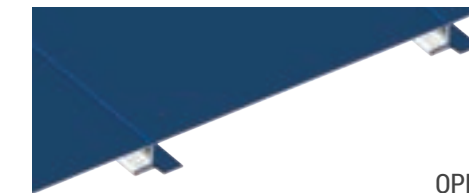
### TEXTURE

Smooth or Stucco Embossed

[www.atas.com/versaline](http://www.atas.com/versaline)



OPM



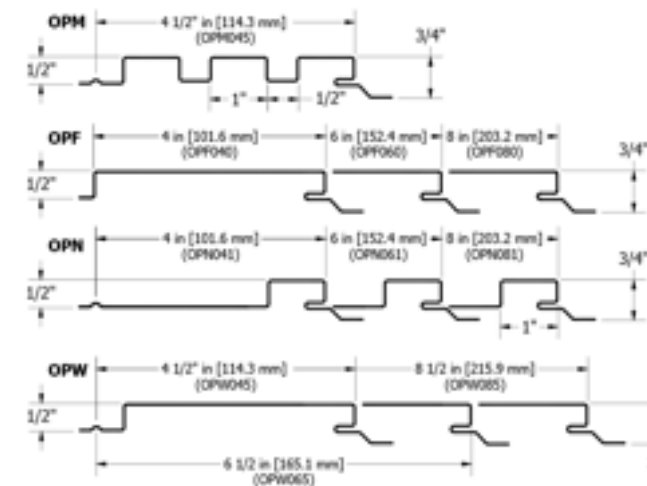
OPF



OPN



OPW



## OPALINE™

SKU: OPM, OPF, OPN, OPW

### MATERIAL

.032 aluminum  
.040 aluminum (OPF, OPN, OPW only)  
24 ga. metallic coated steel  
16, 20 oz. copper\*

### PANEL SPECS

Coverage:  
OPF: 4", 6", 8"  
OPM: 4 1/2"  
OPN: 4", 6", 8"  
OPW: 4 1/2", 6 1/2", 8 1/2"  
Minimum Length: 1'-6"  
Depth: 3/4"

### TEXTURE

Smooth, Stucco Embossed, or Wood Grain Embossed (24 ga. metallic coated steel, .032 aluminum & .040 aluminum only)

[www.atas.com/opaline](http://www.atas.com/opaline)



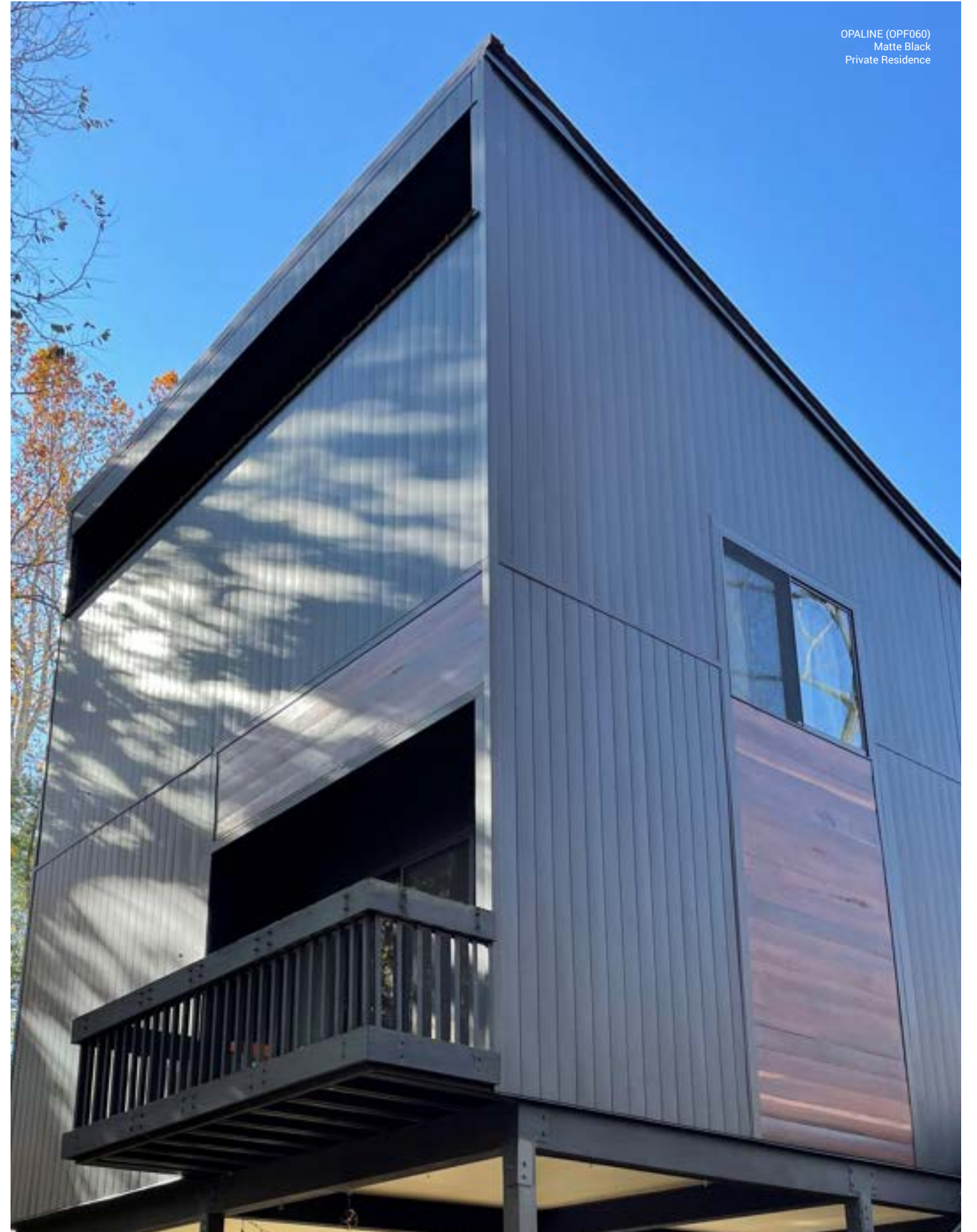
MULTI-PURPOSE PANEL (MPH127)  
Mission Red  
East Suburban YMCA



VERSA-LINE  
Clear Satin Anodized  
Logan Inn



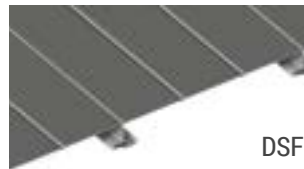
OPALINE (OPF060)  
Matte Black  
Private Residence



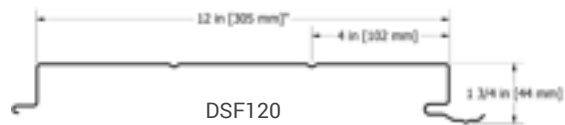
MULTI-PURPOSE PANEL (MPN120)  
Custom Colors  
West-MEC Southwest Campus



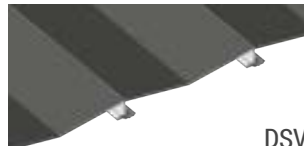
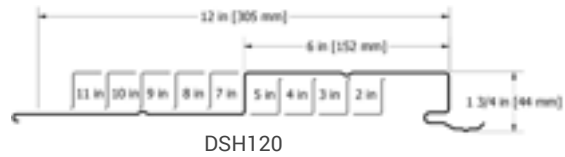




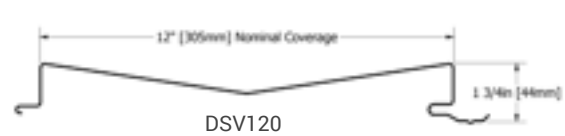
DSF



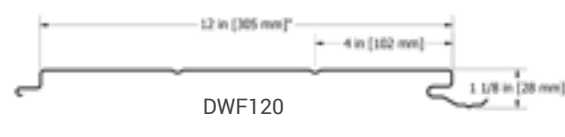
DSH



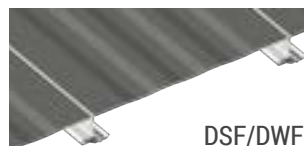
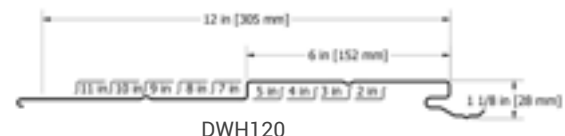
DSV



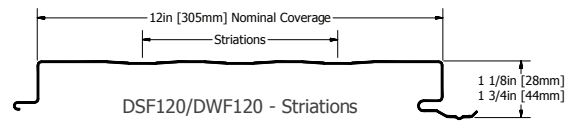
DWF



DWH



DSF/DWF



Optional high pressure clip for structural performance available

### DESIGN WALL™

SKU: DSF, DSH, DSV, DWF, DWH

#### MATERIAL

.032, .040, .050 aluminum  
24, 22\*, 20\* ga. metallic coated steel  
24, 22\* ga. 55% Al-Zn alloy coated steel with acrylic coating  
.8, 1.0 mm zinc\* (W series only)  
16, 20 oz. copper \*

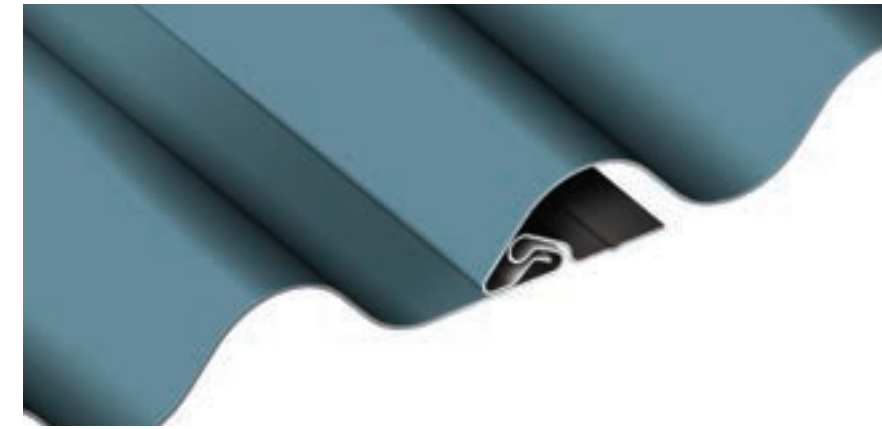
#### PANEL SPECS

Coverage: 12"  
(stiffening ribs standard for DWF, DSF, DWH, & DSH, specify without ribs; striations optional for DSF & DWF)  
Minimum Length: 3'-0"  
Maximum Length: 26'-0" (DSV only)  
Depth: 1 3/4", 1 1/8"

#### TEXTURE

Smooth, Stucco Embossed, or Wood Grain Embossed (DWF, DWH, and DSV only, 24 ga. metallic coated steel, .032 & .040 aluminum only)

[www.atas.com/designwall](http://www.atas.com/designwall)



### CORRA-LOK™

SKU: MFC160

#### MATERIAL

.032, .040, .050 aluminum  
24, 22\* ga. metallic coated steel  
24, 22\* ga. 55% Al-Zn alloy coated steel with acrylic coating  
16, 20 oz. copper\*  
1.0 mm zinc\*  
.0197 classic & tin matte stainless steel\*

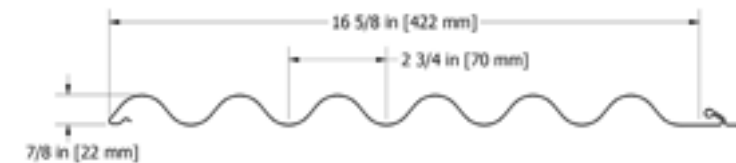
#### PANEL SPECS

Coverage: 16 5/8"  
Minimum Length: 6'-0"  
Depth: 7/8"

#### TEXTURE

Smooth or Stucco Embossed

[www.atas.com/corralok](http://www.atas.com/corralok)



### MONARCH™ BATTEN SEAM

SKU: MRB080, MRB120, MRB160

#### MATERIAL

.032, .040, .050\* aluminum  
24, 22\* ga. metallic coated steel  
24 ga. 55% Al-Zn alloy coated steel with acrylic coating  
16, 20 oz. copper\*

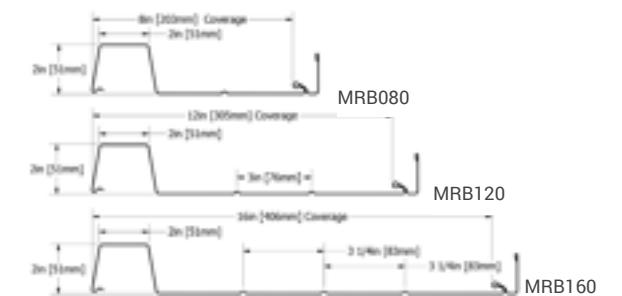
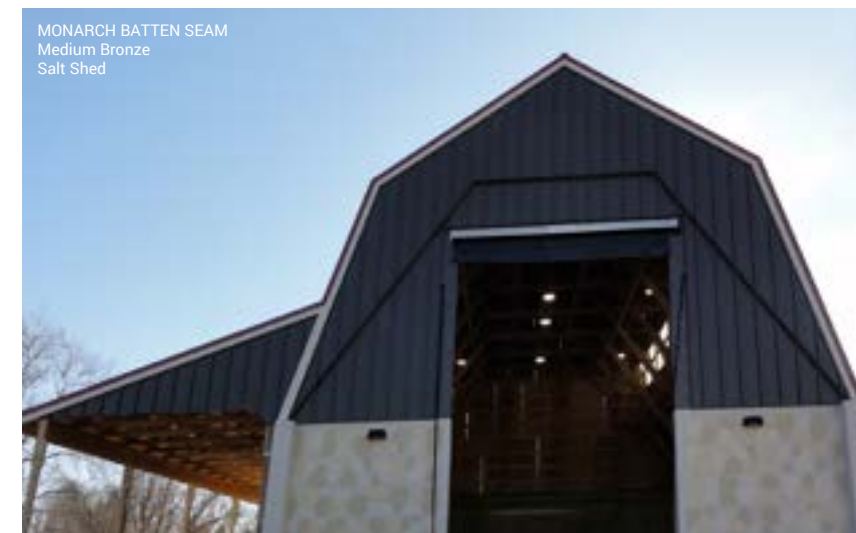
#### PANEL SPECS

Coverage: 8", 12", 16"  
(Stiffening ribs standard, specify without)  
Minimum Length: 4'-0"  
Depth: 2"

#### TEXTURE

Smooth or Stucco Embossed

[www.atas.com/monarchbattenseamwall](http://www.atas.com/monarchbattenseamwall)





## MODULAR WALL PANELS

### OVERVIEW

Modular products offer a wide variety of profiles, sizes, depths, textures, and finishes to create unique aesthetics and added dimension for any building. All of these modular wall panels are installed with concealed fasteners vertically or horizontally, or a combination of both on the same wall. Some are available with perforated patterns for ventilation, shading, screening, or backlighting. A vast selection of standard colors is available, including matte, weathered steel, and woodgrain finishes, along with custom colors.

### FINISH

70% PVDF

### COLORS

Choice of over 40 stock colors  
Custom colors and finishes available\*

### ANODIZED

Clear Satin\*\*  
Dark Bronze\*\*

### ACCESSORIES

A complete line of trims available in matching colors, gauge, and finish or as specified

\*Subject to minimum quantities and extended lead time. Inquire for material and panel coverage availability.

\*\*Omawall PL is not available in anodized.



VERSA-LOK  
Silversmith, Champagne, & Titanium  
Zeiders American Dream Theater  
Photography Credit: Aerophoto America



CASTLETOP  
Slate Grey  
Walnut Street Commons



OMAWALL



OMAWALL PL



VERSA-SEAM  
Classic Bronze, Asgot White  
350 Oliver



STANDING SEAM SHINGLE  
Coppertone  
Anthem House



STERRACORE  
Black  
Stable Lofts





## STANDING SEAM SHINGLE

SKU: HSS164 (36"), HSS165 (60")

### MATERIAL

.032 aluminum  
16 oz. copper\*

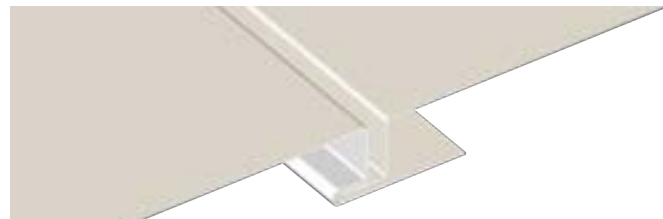
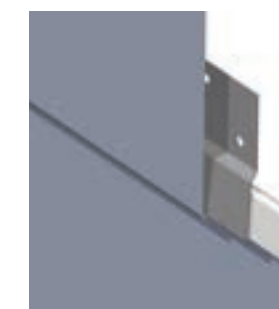
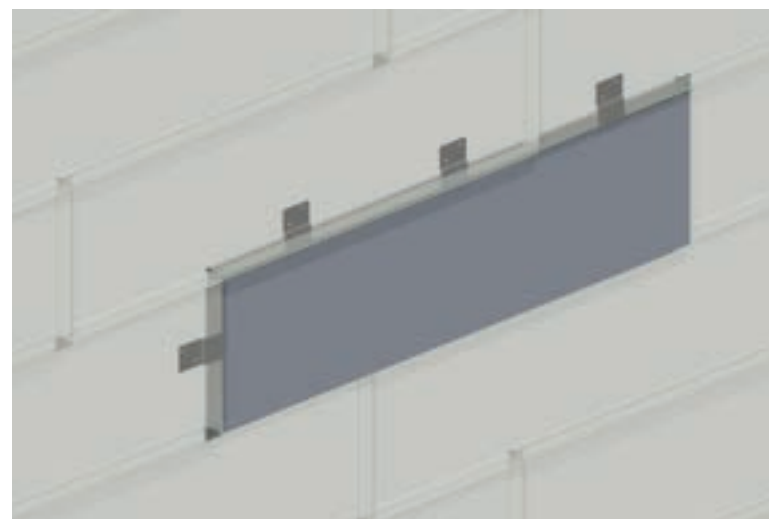
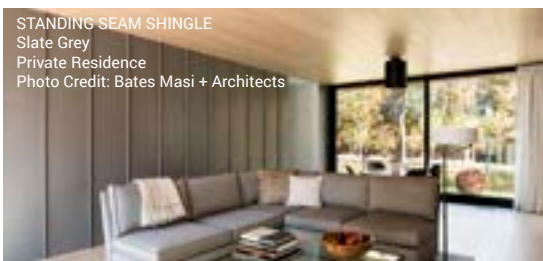
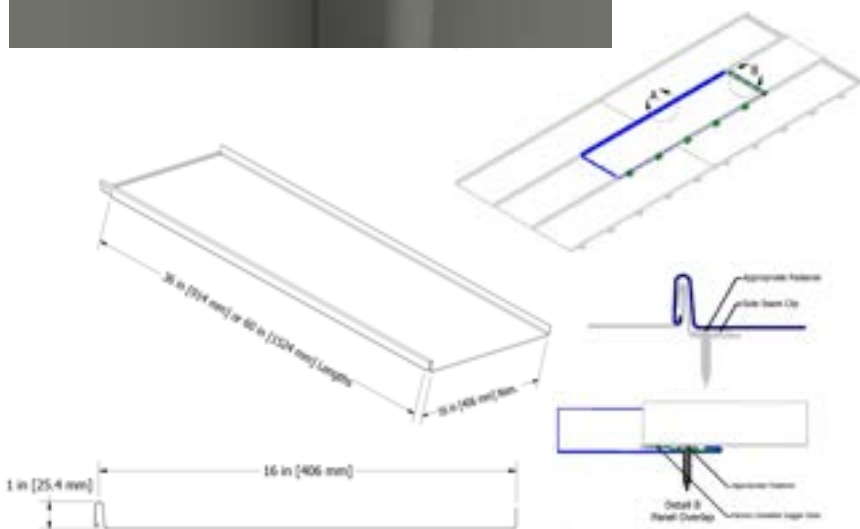
### PANEL SPECS

Size: 16" x 36", 16" x 60"  
Depth: 1"

### TEXTURE

Smooth

[www.atas.com/standingseamshinglewall](http://www.atas.com/standingseamshinglewall)



## VERSA-SEAM™

SKU: VSS080, VSS100, VSS120

### MATERIAL

.032, .040 aluminum  
16, 20 oz. copper\*<sup>^</sup>  
.8, 1.0 mm zinc\*<sup>^</sup>  
.0197 classic & tin matte stainless steel\*<sup>^</sup>  
<sup>^</sup>Inquire for available widths

### PANEL SPECS

Coverage: 8", 10", 12" | Custom widths available\*  
Minimum Length: 3'-0"  
Maximum Length: 20'-0"  
Depth: 1"

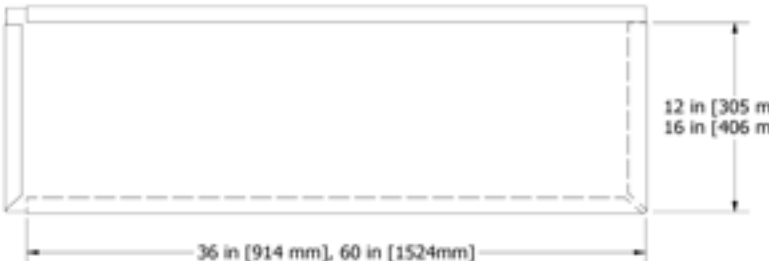
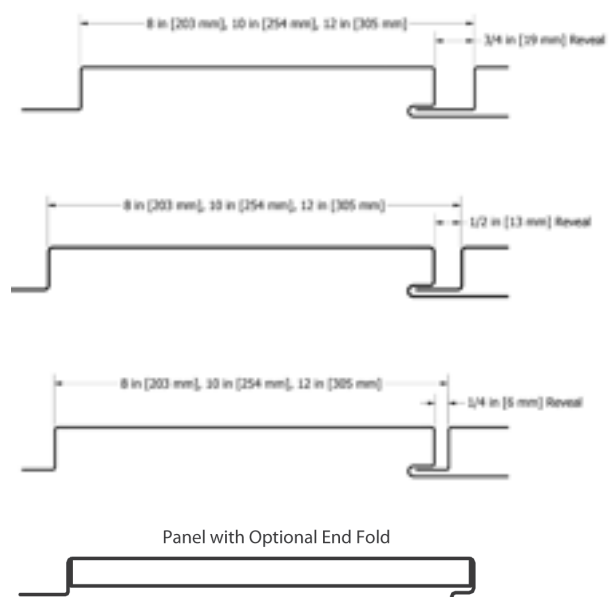
### AVAILABLE

Louvered  
Optional End Folds  
Perforations

### TEXTURE

Smooth, Stucco Embossed, or Wood Grain  
Embossed (.032 aluminum & .040 aluminum only)

[www.atas.com/versaseam](http://www.atas.com/versaseam)



## VERSA-LOK™

SKU Horizontal: VSL123, VSL126, VSL163, VSL166  
SKU Vertical: VSL312, VSL316, VSL612, VSL616

### MATERIAL

.032, .040 aluminum  
16, 20 oz. copper\*<sup>^</sup>  
1.0 mm zinc\*<sup>^</sup>  
.0197 classic & tin matte stainless steel\*<sup>^</sup>  
<sup>^</sup>Inquire for available widths

### PANEL SIZE

Horizontal or Vertical Orientation:  
12" x 36", 12" x 60", 16" x 36", 16" x 60"  
Custom sizes available\*

Must specify panel orientation and direction of panel installation

### TEXTURE

Smooth

[www.atas.com/versalok](http://www.atas.com/versalok)



VERSA-LOK  
Rocky Grey & Silversmith  
Hub 25



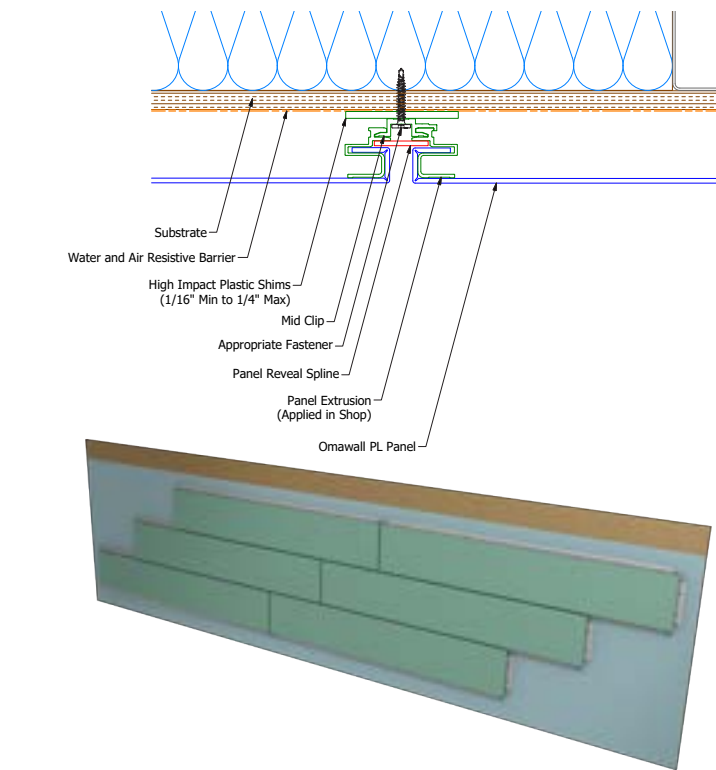
STANDING SEAM SHINGLE  
Slate Grey  
Private Residence  
Photo Credit: Bates Masi + Architects



VERSA-SEAM  
Sandstone  
Emerald Alliance XI







### OMAWALL™ PL WITH EVO™

SKU: OMP260, OMP160

#### MATERIAL

.10 aluminum

#### PANEL SPECS

Size: 26" x 26", 16" x 96", custom sizes available\*

System Depth: 1 3/4"

Reveal Width: 9/16"

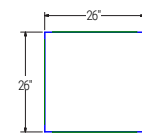
#### TEXTURE

Smooth

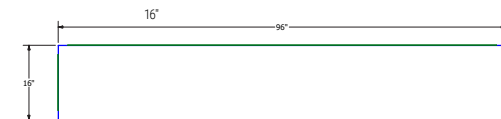
#### AVAILABLE

Matching reveal spline

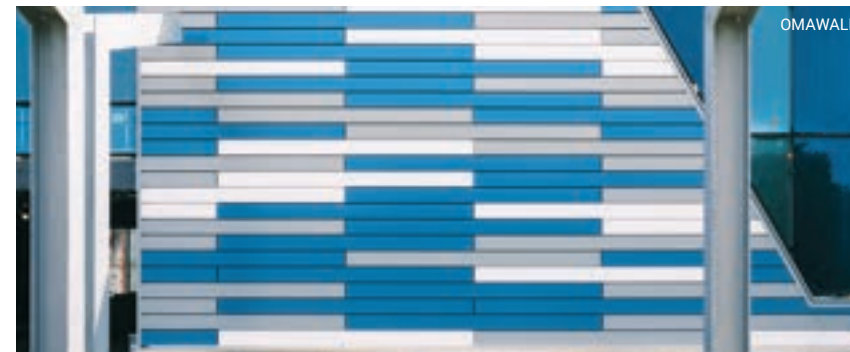
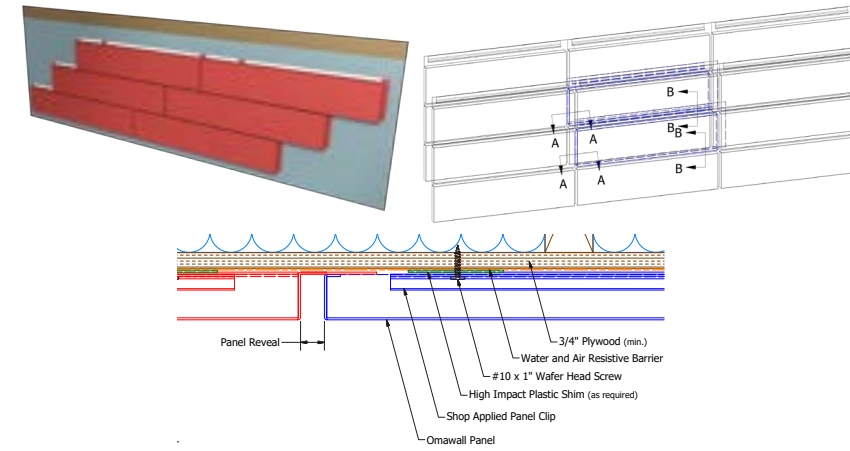
[www.atas.com/omawallpl](http://www.atas.com/omawallpl)



OMP260  
96"



OMP160



### OMAWALL™

SKU: OMW188

#### MATERIAL

.063 aluminum

#### PANEL SPECS

Size: 18" x 96", custom sizes available\*

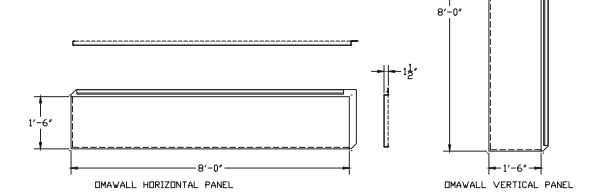
Depth: 1 1/2"

Reveal Width: 5/8"

#### TEXTURE

Smooth

[www.atas.com/omawall](http://www.atas.com/omawall)



### STERRACORE

(METAL COMPOSITE MATERIAL)

SKU: MAU096, MAU120, MAU144, MAU999

#### MATERIAL

.032 aluminum exterior skin

#### PANEL SPECS

Coverage: 48" x 96", 48" x 120", 48" x 144"  
Custom sizes available

#### THICKNESS

6mm

#### TEXTURE

Smooth or Stucco Embossed

[www.atas.com/sterracore](http://www.atas.com/sterracore)



Clip & Seal



1-Piece, Tight-Fit Reveal H Extrusion



1-Piece, Tight-Fit Flush H Extrusion



### CASTLETOP®

SKU: HCT160

#### MATERIAL

.032 aluminum

16 oz. copper\*

.7 mm zinc\*

#### SHINGLE SPECS

Coverage: 13 1/2" x 13 1/2"

Size: 15 3/4" x 15 3/4"

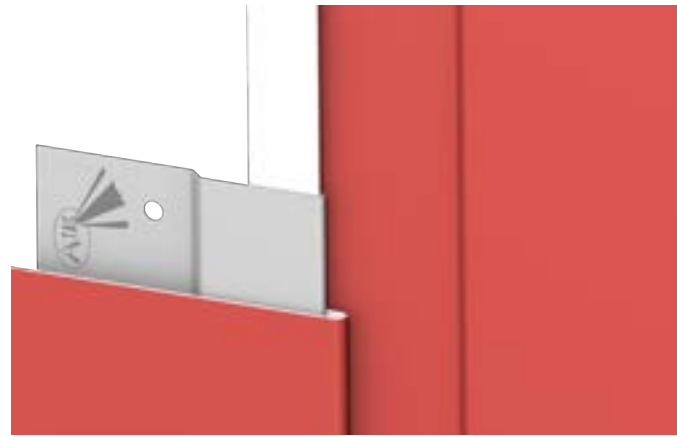
#### TEXTURE

Smooth (copper & zinc only) or  
Stucco Embossed (aluminum only)

[www.atas.com/castletopwalls](http://www.atas.com/castletopwalls)







## VERSA-LOK REVEAL

SKU: VLR

### MATERIAL

.032, .040 aluminum

### PANEL SPECS

Horizontal or Vertical Orientation:  
12" x 36", 12" x 60", 16" x 36", 16" x 60"

Custom sizes available\*

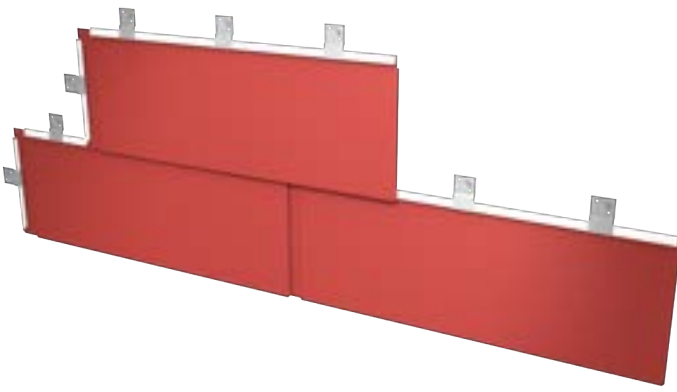
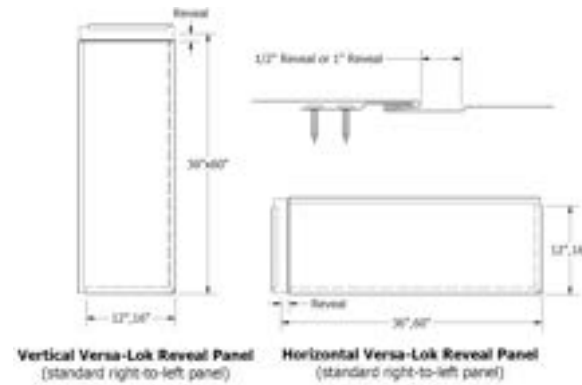
Must specify panel orientation and direction of panel installation

Reveal: 1/2", 1"

### TEXTURE

Smooth

[www.atas.com/versalokreveal](http://www.atas.com/versalokreveal)



## DESIGN WALL REVEAL

SKU: DSR, DWR

### MATERIAL

.032, .040, .050 aluminum

### PANEL SPECS

Coverage: 8", 10", 12" | Custom widths available in 1" increments\*

High Pressure Clip optional

Reveal: 1"

Minimum Length: 3'-0"

Maximum Length: 15'-0"

Depth: DSR: 1 3/4", DWR: 1 1/8"

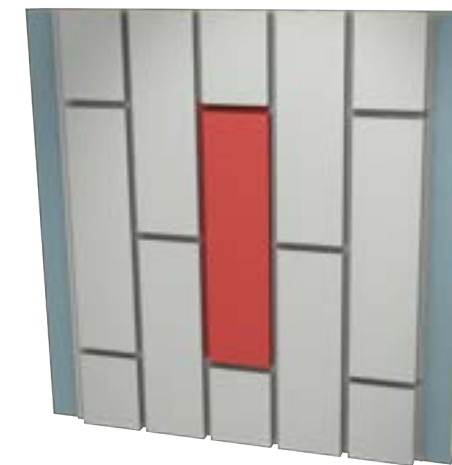
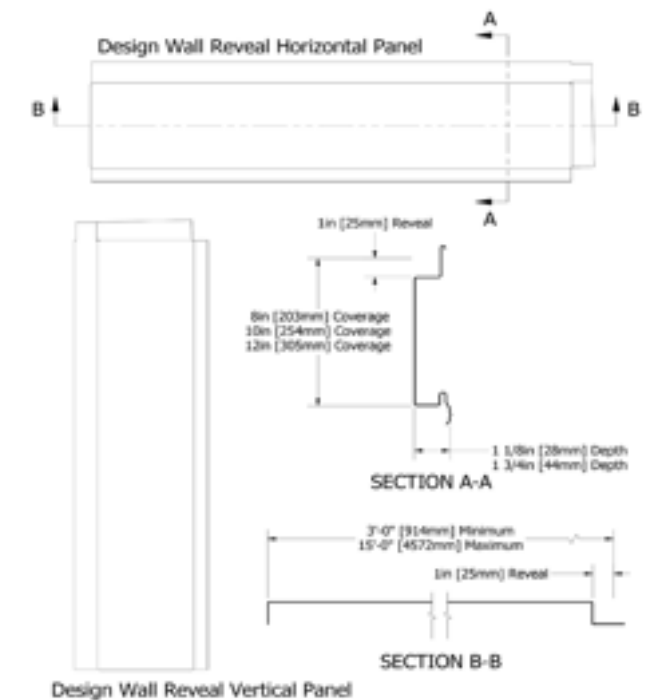
### AVAILABLE

Perforations

### TEXTURE

Smooth, Stucco Embossed, or Wood Grain Embossed (DWR only)

[www.atas.com/designwallreveal](http://www.atas.com/designwallreveal)



## VERSA-SEAM REVEAL

SKU: VSR

### MATERIAL

.032, .040 aluminum

### PANEL SPECS

Coverage: 8", 10", 12" | Custom widths available in 1" increments\*

Reveal: 1/4", 1/2", 3/4"

Minimum Length: 3'-0"

Maximum Length: 15'-0"

Depth: 1"

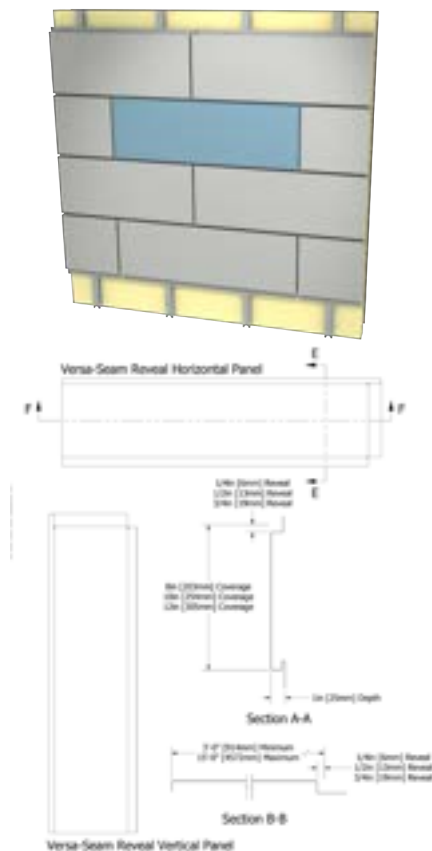
### AVAILABLE

Perforations

### TEXTURE

Smooth, Stucco Embossed, or Wood Grain

[www.atas.com/versaseamreveal](http://www.atas.com/versaseamreveal)





## EXPOSED FASTENER WALL PANELS

### OVERVIEW

Exposed fastener wall panels have come full circle. Originally popularized for their economical, quick-installation advantages, these panels provide a rugged, urban-industrial aesthetic desired by building owners and architects alike. Choose from a wide variety of profile styles, from ribbed panels to traditional corrugated, with vertical and horizontal installation options, as well as curving and perforating capabilities.

While ease of installation remains important, ATAS provides additional peace of mind by offering long-lasting, high performance fasteners and accessories in matching colors, made to resist weathering and deterioration. This attention to detail has proven successful. Exposed fastener panels have surged in popularity for their aesthetic qualities, with the fasteners and accessories being as much of a focal point as the panels themselves.

All exposed fastener wall panels share the following specifications, unless otherwise noted:

### MAXIMUM PANEL LENGTH

Transportation limitations and/or product and project design considerations

### PERFORATIONS AVAILABLE:

Yes

### FINISH

70% PVDF

### COLORS

Choice of over 40 stock colors  
Custom colors and finishes available\*

### ANODIZED

Clear Satin  
Dark Bronze

### ACCESSORIES

A complete line of trims available in matching colors, gauge, and finish or as specified

\*Subject to minimum quantities and extended lead time. Inquire for material and panel coverage availability.



BELVEDERE 6" RIB  
Clear Satin Anodized  
Bixby Redhill



BELVEDERE 7.2" RIB  
Rocky Grey, Bone White, Dove Grey, Patina Green  
Eastern Warehouse



BELVEDERE GRAND R  
Sandstone  
Peacock Partnership



BELVEDERE PENUMWALL  
55% Al-Zn Alloy Coated Steel with Acrylic Coating  
Dolphin Station Park and Ride



CORRUGATED PANEL  
Charcoal Grey  
Nortra



GRAND C  
Silversmith  
Bakery Living



SPAN WALL  
Titanium  
Executive Education Academy Charter School



WAVE PANEL  
Charcoal Grey  
Cedar Point Valravn Roller Coaster





BELVEDERE 7.2" RIB  
Ascot White & Rocky Grey  
Orinoka Civic House



BELVEDERE 6" SHORT RIB  
Silversmith  
Seton Hill Dance & Visual Arts



PERFORATED BELVEDERE  
GRAND R  
Custom Blue  
Wiseburn High School



BELVEDERE PENUMWALL  
Redwood  
PSEG



7.2" Rib  
(BWR360)



6" Short Rib  
(BWK360)



Grand R  
(BWG390)



PenumWall  
(BWS391)

## BELVEDERE™ SERIES

SKU: BWR360, BWK360, BWG390, BWS391

### MATERIAL

.032, .040, .050 aluminum  
24, 22\*, 20\* ga. metallic coated steel  
24, 22\*, 20\* ga. 55% Al-Zn alloy coated steel with acrylic coating

### PANEL SPECS

Coverage:  
36" (BWR360 & BWK360)  
39" (BWG390)  
39 3/8" (BWS391)

Minimum Length: 6'-0"

Depth:  
1 1/2" (BWR360, BWK360, BWG390)  
1 1/4" (BWS391)

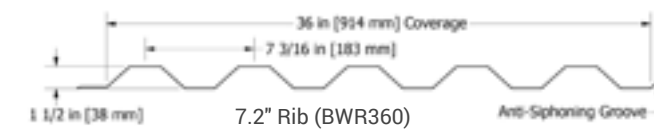
### AVAILABLE

Crimp-Curving (convex and concave)  
(BWR360 & BWK360 only)

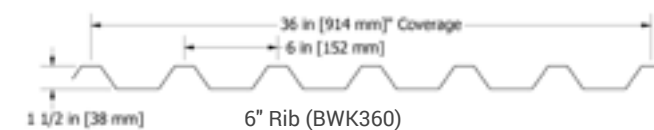
### TEXTURE

Smooth or Stucco Embossed

- [www.atas.com/belvedererib](http://www.atas.com/belvedererib)
- [www.atas.com/belvedereshortrib](http://www.atas.com/belvedereshortrib)
- [www.atas.com/grandr](http://www.atas.com/grandr)
- [www.atas.com/penumwall](http://www.atas.com/penumwall)



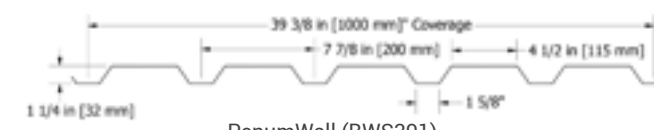
7.2" Rib (BWR360)



6" Rib (BWK360)



Grand R (BWG390)

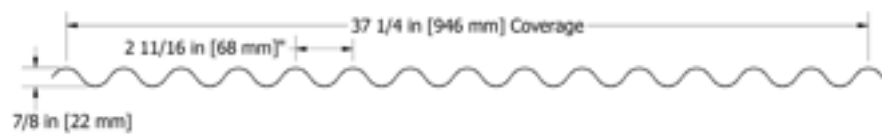
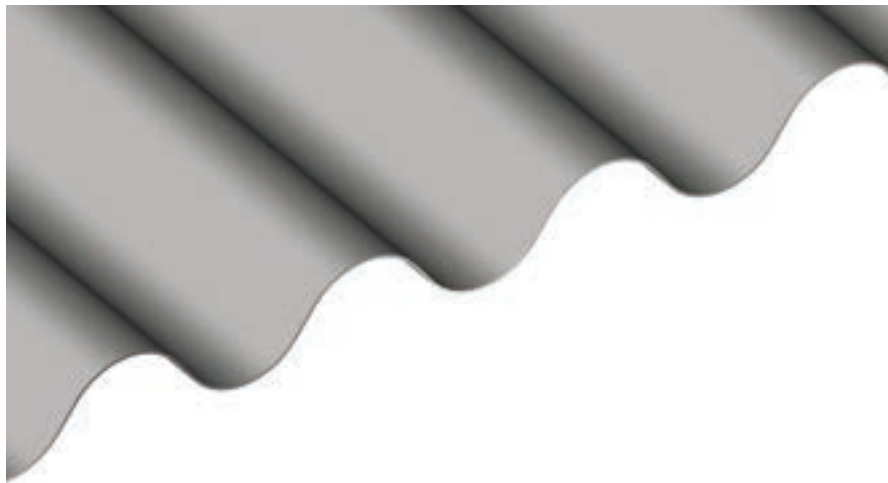


PenumWall (BWS391)



BELVEDERE 7.2" RIB  
Dove Grey, Charcoal Grey, Slate Grey  
3 Acres Apartments





## CORRUGATED PANEL

SKU: BWC374

### MATERIAL

.032, .040, .050 aluminum  
 24, 22\*, 20\* ga. metallic coated steel  
 24, 22\*, 20\* ga. 55% Al-Zn alloy coated steel with acrylic coating  
 16, 20 oz. copper\*<sup>^</sup>  
 .8, 1.0, 1.2 mm zinc\*<sup>^</sup>  
<sup>^</sup>Inquire for available panel widths

### PANEL SPECS

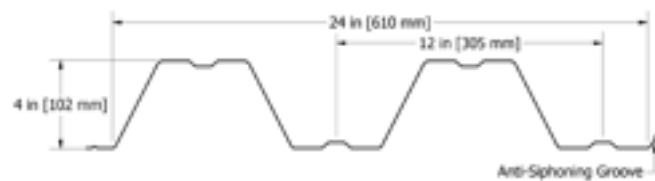
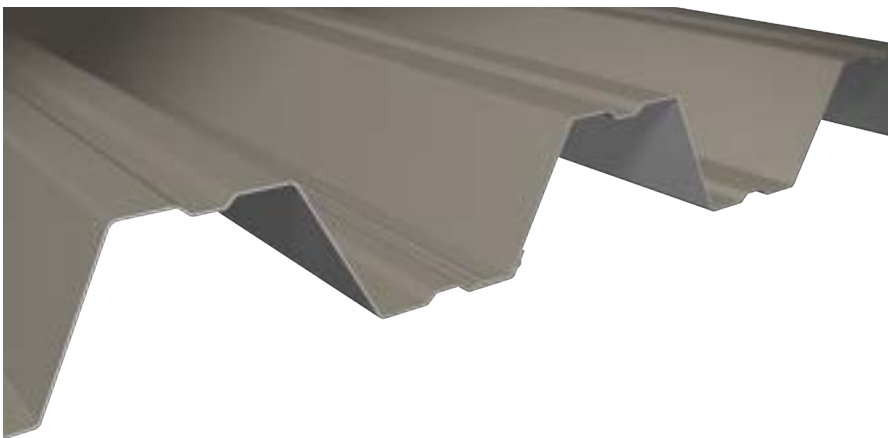
Coverage: 37 1/4"  
 Minimum Length: 6'-0"  
 Depth: 7/8"

### AVAILABLE

Crimp-Curving (convex and concave)  
 Stretch Curving

### TEXTURE

Smooth or Stucco Embossed  
[www.atas.com/corrugated](http://www.atas.com/corrugated)



## SPAN WALL™

SKU: BWS240

### MATERIAL

.032, .040, .050 aluminum  
 24, 22\*, 20, 18 ga. metallic coated steel  
 24, 22\*, 20\*, 18\* ga. 55% Al-Zn alloy coated steel with acrylic coating  
 .8, 1.0 mm zinc\*  
 16, 20 oz. copper\*

### PANEL SPECS

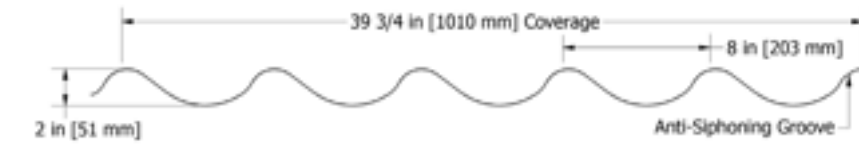
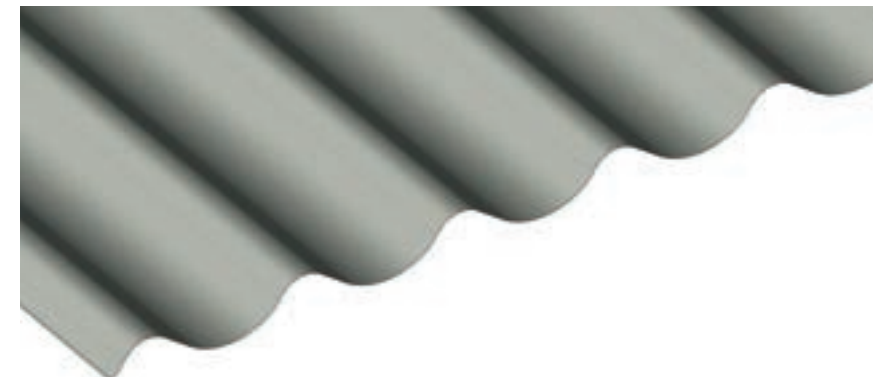
Coverage: 24"  
 Minimum Length: 6'-0"  
 Depth: 4"

### AVAILABLE

Crimp-Curving (convex and concave)

### TEXTURE

Smooth or Stucco Embossed  
[www.atas.com/spanwall](http://www.atas.com/spanwall)



## WAVE PANEL

SKU: BWW400

### MATERIAL

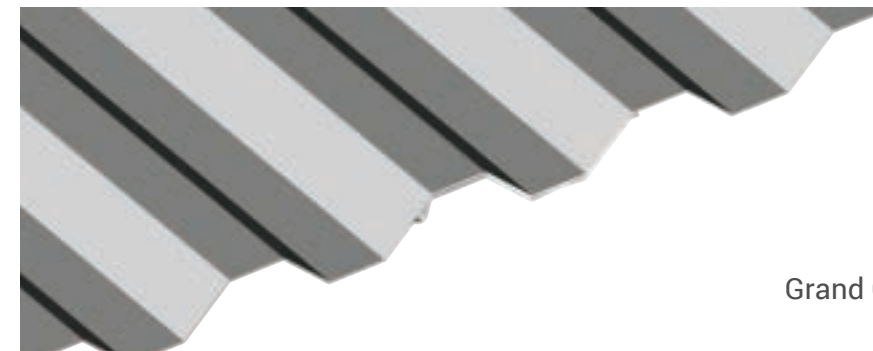
.032, .040, .050 aluminum,  
 22\* ga. metallic coated steel

### PANEL SPECS

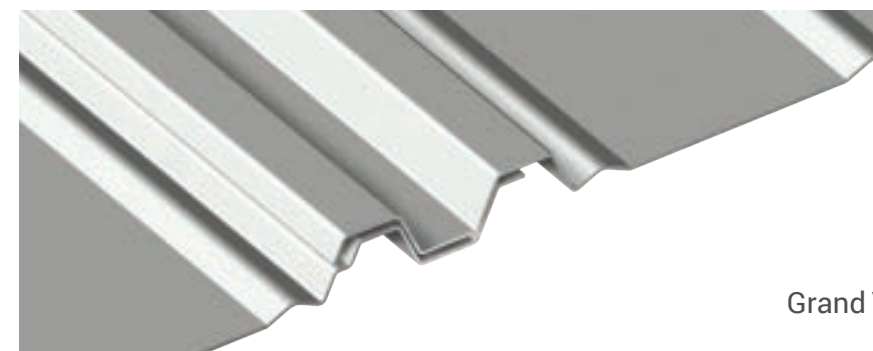
Coverage: 39 3/4"  
 Minimum Length: 1'-6 1/2"  
 Depth: 2"

### TEXTURE

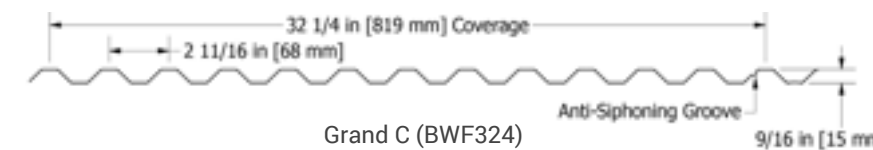
Smooth or Stucco Embossed  
[www.atas.com/wavepanel](http://www.atas.com/wavepanel)



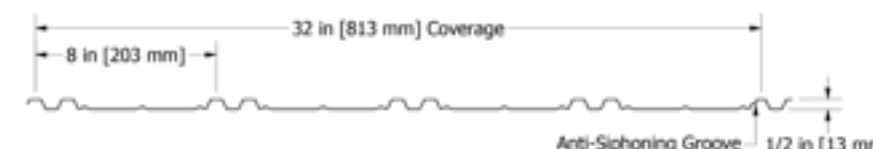
Grand C



Grand V



Grand C (BWF324)



Grand V (BWW320)

## GRAND C & GRAND V

SKU: BWF324 (Grand C),  
 BWW320 (Grand V)

### MATERIAL

.032 aluminum

### PANEL SPECS

Coverage:  
 32 1/4" (Grand C),  
 32" (Grand V)  
 Minimum Length: 6'-0"  
 Depth:  
 9/16" (Grand C),  
 1/2" (Grand V)

### TEXTURE

Smooth  
[www.atas.com/grandc](http://www.atas.com/grandc)  
[www.atas.com/grandv](http://www.atas.com/grandv)



CORRUGATED PANEL  
Grey Zinc  
The Brooklyn Zinc



WAVE PANEL  
Copper Finish  
One Hotel



SPAN WALL  
Charcoal Grey  
Best Impressions Catering

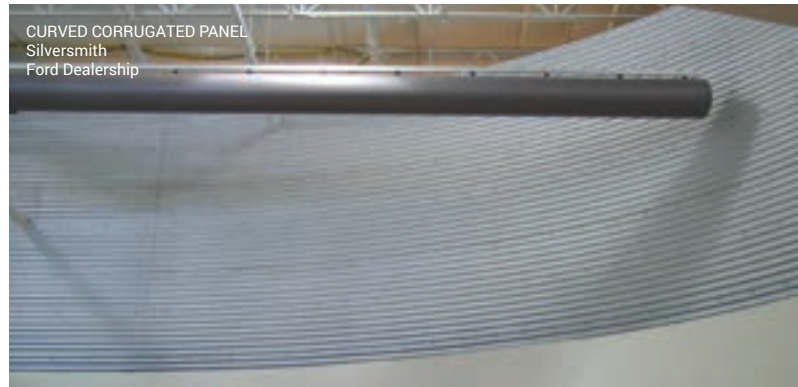
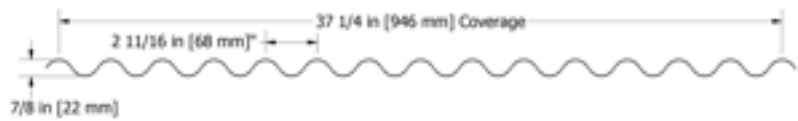
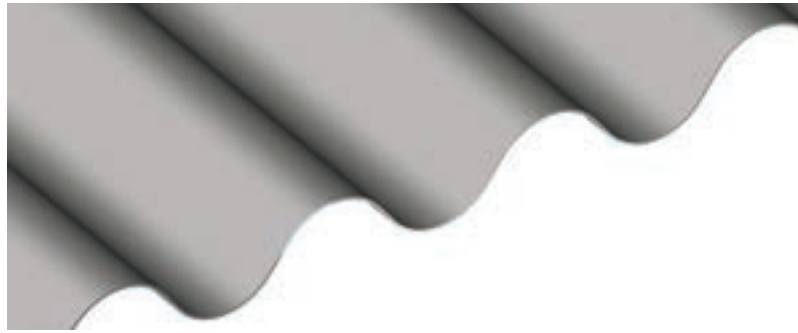


GRAND C  
Patina Green, Silversmith, Brilliant Green  
Otto Brewertown





## STRETCH CURVED & CRIMP CURVED WALL PANELS



### CURVED CORRUGATED PANEL

SKU: BWX374 (convex),  
BWV374 (concave)

#### MATERIAL

.032, .040, .050 aluminum  
24, 22\* ga. metallic coated steel  
24, 22\* ga. 55% Al-Zn alloy coated steel with acrylic coating  
.8, 1.0, 1.2 mm zinc\*

#### PANEL SPECS

Coverage: 37 1/4", 29 3/8" (curved zinc panels only)  
Minimum Length: 6'-0"  
Depth: 7/8"  
Minimum Radius: 10'-0"

#### AVAILABLE

Stretch Curving & Crimp Curving

#### TEXTURE

Smooth or Stucco Embossed

#### FASTENERS

Exposed

[www.atas.com/curvedcorrugated](http://www.atas.com/curvedcorrugated)



### ARC-METAFOR™

SKU: MFX120 (convex, minimum radius 5'-9"),  
MFV120 (concave, minimum radius 10'-0")

#### MATERIAL

.032 aluminum

#### PANEL SPECS

Coverage: 12"  
Minimum Length: 4'-0"  
Depth: 5/8"

#### AVAILABLE

Stretch Curve

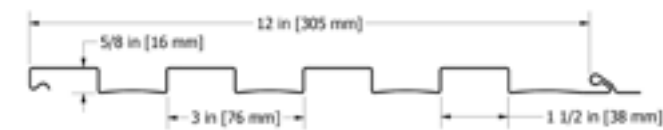
#### TEXTURE

Smooth or Stucco Embossed

#### FASTENERS

Concealed

[www.atas.com/arcmetafor](http://www.atas.com/arcmetafor)



### CRIMP CURVING

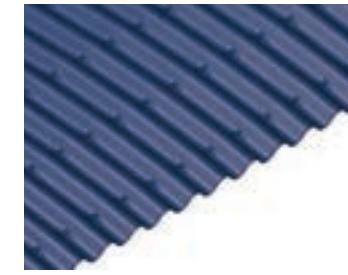
The ATAS crimp curving process increases the strength and rigidity of metal panels. When you design with curved panels, it's often possible to reduce panel gauge and/or the amount or type of structural support, saving material and labor. Find more information at [www.atas.com/products/metal-wall-panels/curved-series](http://www.atas.com/products/metal-wall-panels/curved-series).



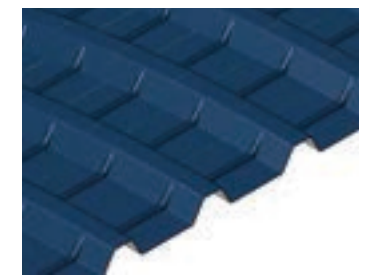
Span Wall



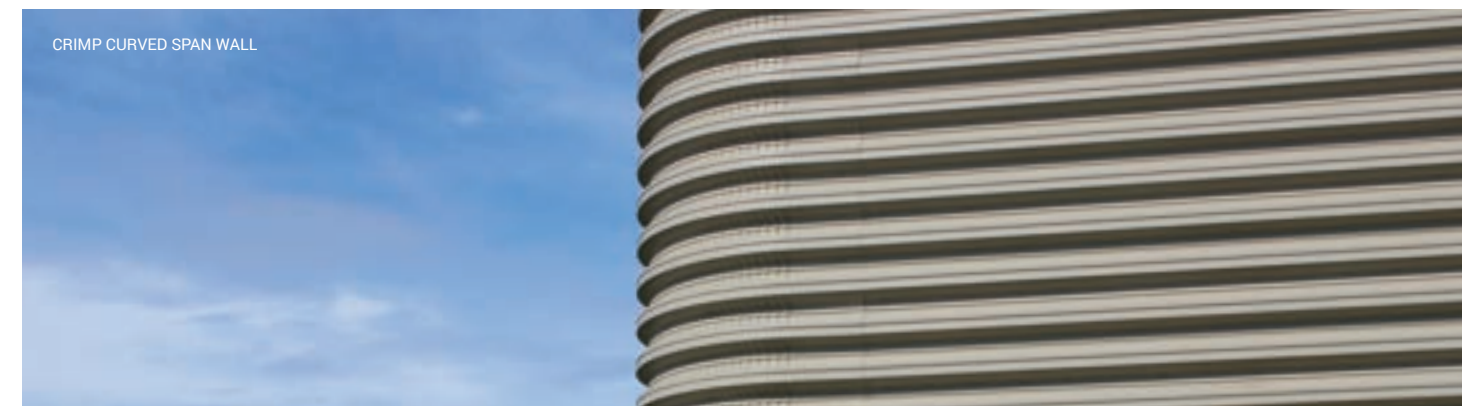
Belvedere 7.2" Rib



Corrugated Panel



Belvedere 6" Short Rib





## MIX AND MATCH

ATAS profiles can be mixed and matched several different ways:

- Corra-Lok, Metafor, Rigid Wall II series, and Multi-Purpose Panels all share the Wind-Lok interlocking system which allows for the profiles to be mixed and matched.
- Design Wall, Opaline, and Versa-Seam panels can be mixed within their own series only.
- All ATAS profiles can be mixed and matched if separated with trim.
- You can also achieve the mix and match look by using ATAS profiles in varied widths and colors.

[www.atas.com/mixandmatch](http://www.atas.com/mixandmatch)



Corra-Lok & Metafor



Design Wall  
(DWF & DWH)



Metafor &  
Rigid Wall II



Multi-Purpose  
Panels (MPV & MPH)



Opaline (OPW & OPM)



Rigid Wall II  
(MFN160 & MFN161)



BELVEDERE 6" SHORT RIB, RIGID WALL, MULTI-PURPOSE PANELS  
Brite Red, Rocky Grey, Slate Grey, Antique Patina  
Eureka Springs High School



CASTLETOP  
Dove Grey, Siam Blue, Regal Blue, Teal, Hartford Green, Hemlock Green  
Odyssey Elementary School



RIGID WALL II, MULTI-PURPOSE PANELS  
(PERFORATED AND NONPERFORATED)  
SilverSmith  
The Residences at Twelve40



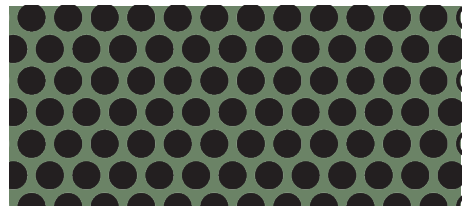
## PERFORATED METAL

### GATEN SERIES™

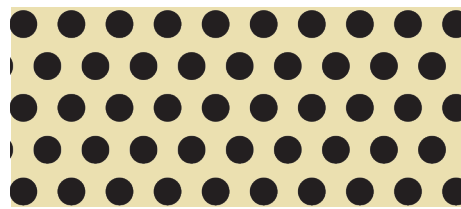
Available in a wide selection of gauges, materials, panel profiles, and colors, Gaten Series perforated panels are ideal for numerous applications including architectural design, passive solar shading, ventilation, acoustical solutions, and equipment screens. ATAS offers six standard hole size patterns, as well as custom options to fit any project's design needs. Additionally, ATAS can color-match each side of the panels for applications where both sides are visible. An aluminum substrate is ideal for outdoor perforated applications due to its inherent corrosion-resistant properties.

ATAS provides a single source package for your project's needs, including engineering expertise, structural hat channels and framing, corners, end caps, trims, and flashings. Custom perforation patterns available upon request.

[www.atas.com/gaten](http://www.atas.com/gaten)



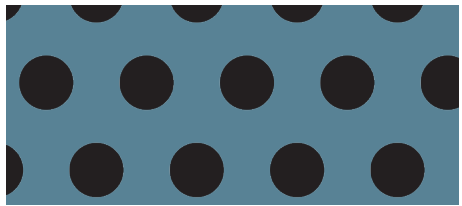
**A13**  
1/8" holes | 3/16" staggered centers  
40% open area | Shown in Patina Green



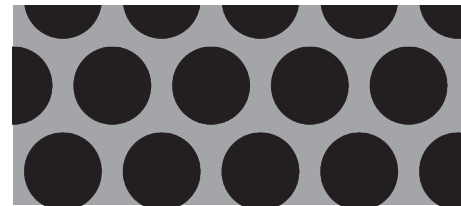
**A15**  
1/8" holes | 1/4" staggered centers  
23% open area | Shown in Concord Cream



**A19**  
3/16" holes | 5/16" staggered centers  
33% open area | Shown in Teal



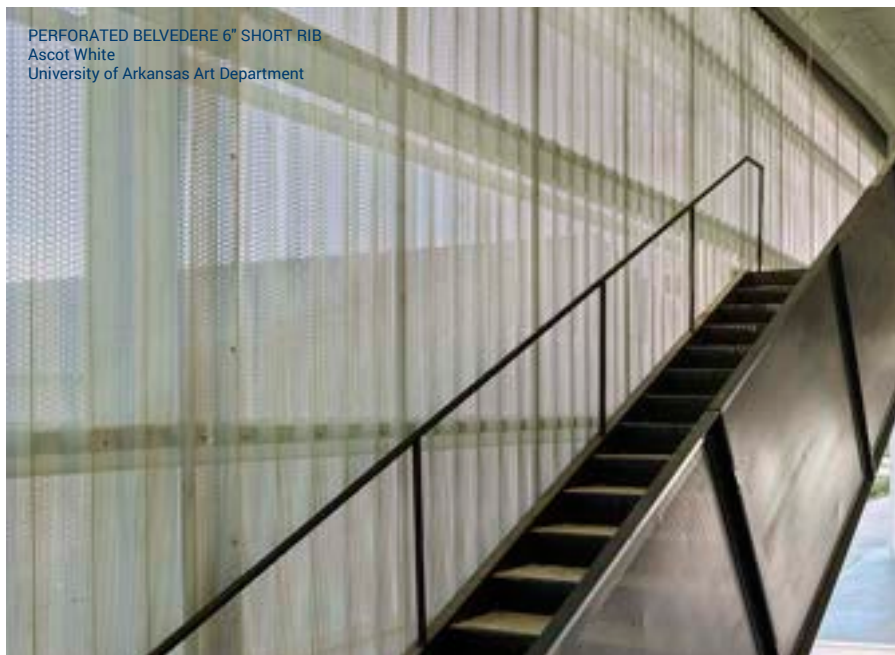
**A23**  
1/4" holes | 1/2" staggered centers  
23% open area | Shown in Slate Blue



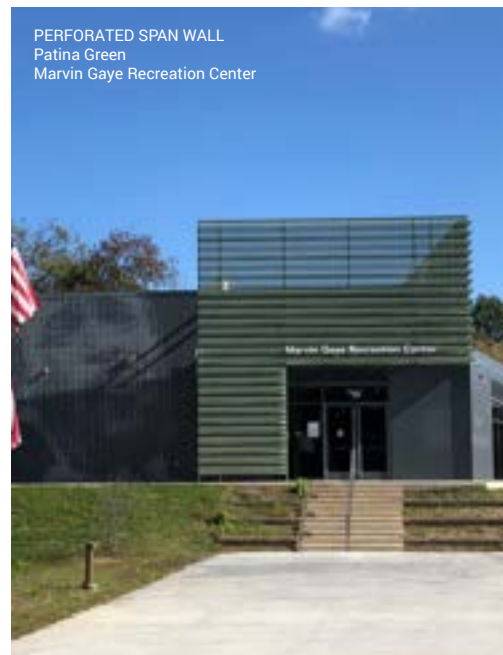
**A24**  
3/8" holes | 1/2" staggered centers  
51% open area | Shown in Silversmith



**A25**  
3/8" holes | 9/16" staggered centers  
40% open area | Shown in Mission Red

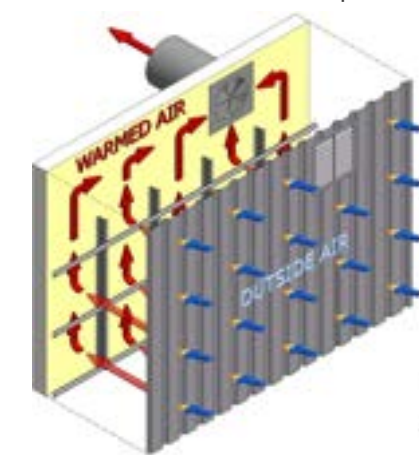
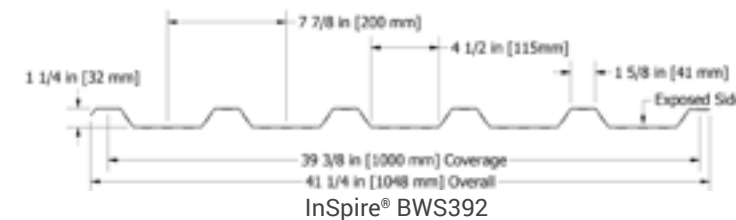
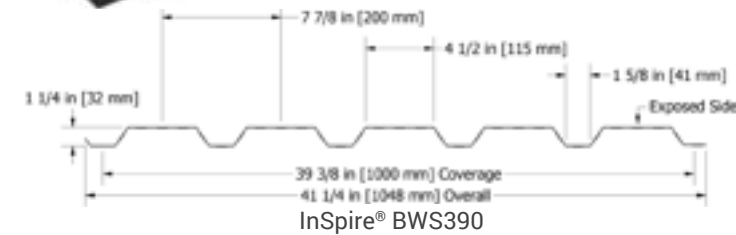


PERFORATED BELVEDERE 6" SHORT RIB  
Ascot White  
University of Arkansas Art Department



PERFORATED SPAN WALL  
Patina Green  
Marvin Gaye Recreation Center

## SOLAR AIR HEATING



INSPIRE®  
Classic Bronze  
John W. Olver Transit Center

### INSPIRE®

SKU: BWS390, BWS392

### MATERIAL

.032 aluminum

### PANEL SPECS

Coverage: 39 3/8"

Minimum Length: 6'-0"

Maximum Length: 40'-0"

Depth: 1 1/4"

### TEXTURE

Smooth with lanced micro perforations

### FINISH

70% PVDF, Select Blue (InSpire HP),

Select Black (InSpire HP)

### COLORS

To view our selection of solar efficient colors and absorptivity rates, visit [www.inspirewall.com](http://www.inspirewall.com)

### ACCESSORIES

A complete line of trims available in matching colors, gauge, and finish or as specified.

### FASTENERS

Exposed (standard)

Concealed (upon request)

### HOW IT WORKS

In this schematic of the InSpire Solar Air Heating Collector, the horizontal hat sections are attached to vertical z-channels to create the framing structure used for attaching the perforated panel. These girts and sub-girts also serve the purpose of creating an off-set, or plenum, behind the panel.

Sunlight warms the solar collector (black portion in picture). A thin boundary layer of warmed air begins to accumulate on the surface of the panel. Then, an intake fan pulls this warm air through the perforations, into the plenum, and then into the normal air handling system to help heat the building's interior.

Our selective finish is an optical coating applied to the surface of an element of a solar energy device to reduce thermal radiation losses and improve collector efficiency through higher heat gain.

[www.inspirewall.com](http://www.inspirewall.com)



# INSULATED METAL PANELS

## OVERVIEW

All Isoleren panels, excluding Isoleren Fire-Rated, share the following specifications:

## EXTERIOR

Gauge: 26, 24, 22 (Isoleren IM, TE: 26, 24 only; Isoleren WL: 24, 22 only)

Finish: Siliconized Polyester, 70% PVDF, Low Gloss, Standard Gloss (USDA White) Isoleren ML only: Polyester, Plastisol, Stainless

## INTERIOR

Profile: Isoleren ML

Gauge: 26, 24, 22

Texture: Smooth or Embossed

Finish: 70% PVDF, Polyester, Siliconized Polyester, Standard Gloss (USDA white), Plastisol\*, Stainless\*

## SUBSTRATE

Metallic Coated Steel and Stainless Steel

## PANEL SPECS

Coverage: 42"

## CORE

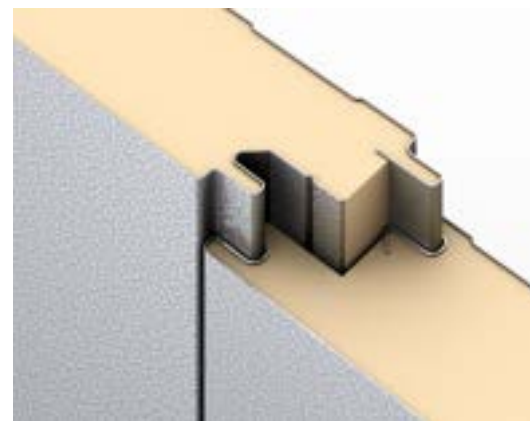
Continuously poured-in-place, polyisocyanurate, insulating foam

## R-VALUE

R-8 per inch of thickness (nominal)

\*Isoleren WL is not available in Plastisol and Stainless

[www.atas.com/insulatedmetalpanels](http://www.atas.com/insulatedmetalpanels)



Isoleren insulated metal panels (IMPs) provide superior insulating properties and can be installed quickly. Because IMPs are a single-unit comprised of insulation sandwiched between two layers of metal skin, labor and materials costs are minimized. The Isoleren RL insulated metal roof panel provides the look of a standing seam metal roof with maximum thermal performance.

Isoleren insulated metal wall panels are available in five unique profiles and can be installed both vertically and horizontally for a distinct architectural look. Fire-Rated wall panels are available in one, two and three-hour fire ratings.

## STANDARD SILICONIZED POLYESTER ROOF & WALL COLORS

(In-Stock, Standard Gloss)



Regal White II

Light Stone

Gray Stone

## STANDARD POLYESTER

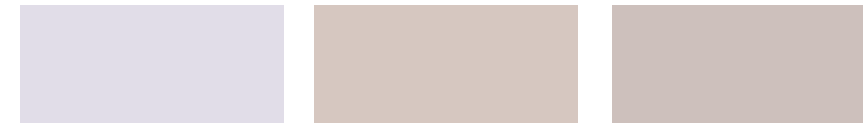
(Interior Only)



Regal White I

## STANDARD 70% PVDF ROOF & WALL COLORS

(In-Stock, Standard Gloss for Roof Applications, Low Gloss for Wall Applications)



Regal White III

Almond

Sandstone



Patina Green

Ash Gray

## STANDARD 70% PVDF WALL COLORS

(In-Stock, Low Gloss)



Surrey Beige

Roman Blue

## PREMIUM METALLICS

(Special Colors, Not In-Stock, Additional Costs Apply)



Texas Silver

Leadcoat

Weathered Galvalume®



Champagne

Copper Penny



ISOLEREN RL  
Texas Silver  
Lower Farms Barns



ISOLEREN IM  
Regal Blue  
Sheffield Ave. Self Storage



ISOLEREN IM  
Regal White III  
Architectural Metals, Inc.





**ISOLEREN® IM**

SKU: IIM

**STANDARD LENGTHS**

8'-0" to 40'-0"

**THICKNESS (A)**

2", 2½", 3", and 4"

**REVEAL**

Also available in a 1¼" reveal at panel interlock

**EXTERIOR TEXTURE**

Troweled Embossed



**ISOLEREN® WL**

SKU: IWL

**STANDARD LENGTHS**

8'-0" to 40'-0"

**THICKNESS (A)**

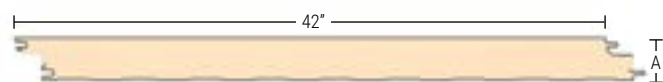
2", 2½", 3", and 4"

**REVEAL**

Also available in a 1¼" reveal at panel interlock

**EXTERIOR TEXTURE**

Smooth or Embossed



Line drawing applies to all Isoleren profiles on this page.



**ISOLEREN® TE**

SKU: ITE

**EXTERIOR TEXTURE**

Troweled Embossed

**THICKNESS (A)**

2", 2½", 3", 4", 5", and 6"

**STANDARD LENGTHS**

8'-0" to 53'-0"



**ISOLEREN® SL**

SKU: ISL

**EXTERIOR TEXTURE**

Smooth or Embossed

**THICKNESS (A)**

2", 2½", 3", 4", 5", and 6"

**STANDARD LENGTHS**

8'-0" to 53'-0"



**ISOLEREN® ML**

SKU: IML

**EXTERIOR TEXTURE**

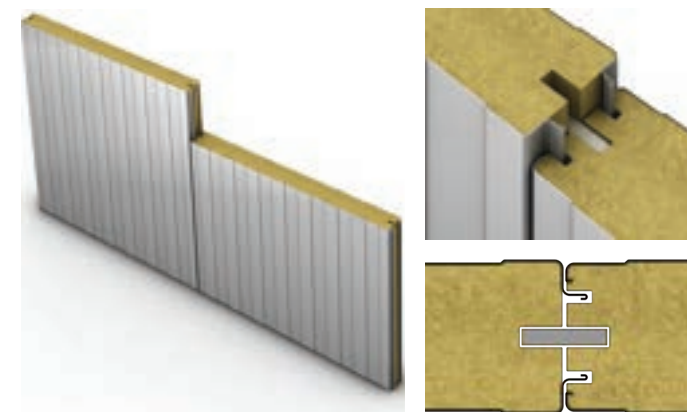
Smooth or Embossed

**THICKNESS (A)**

2", 2½", 3", 4", 5", and 6"

**STANDARD LENGTHS**

8'-0" to 53'-0"



**ISOLEREN® FIRE-RATED**

SKU: IMF, ISF

**EXTERIOR**

Profile: Isoleren MF, SF

Gauge: 26, 24

Finish: 1.0 mil thick 70% PVDF, Polyester, Siliconized Polyester

Texture: Embossed

**INTERIOR**

Profile: Isoleren ML

Gauge: 26, 24

Finish: Siliconized Polyester, Standard Gloss (USDA White)

Texture: Embossed

**SUBSTRATE**

Galvalume®, G90 Galvanized (Grade 33), and Stainless Steel (Type 304)

**THICKNESS (A)**

4", 5", 6", 8", 10", and 12"

**CORE**

ROCKWOOL® ConRock L structural mineral wool

**K FACTOR**

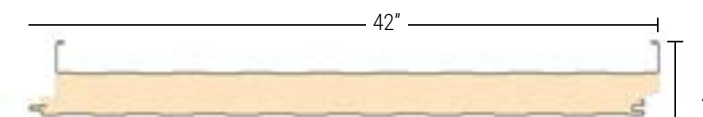
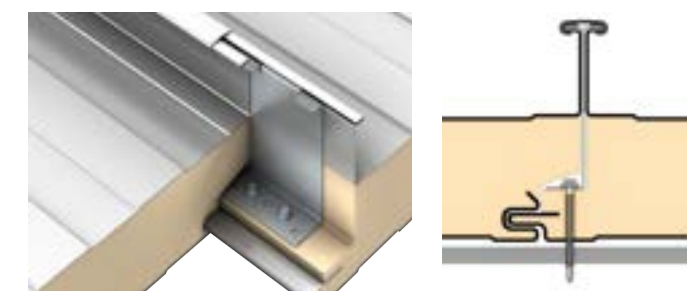
0.277 BTU-in/hr-ft²/F° @ 40° F mean temperature (R-3.61)

**SPLINES**

Fiber-reinforced cement board (½" x 2¾" x 8' long)

**AVAILABLE LENGTHS**

Minimum 8'-0" to maximum 30'-0"; over 30'-0", please inquire



**ISOLEREN® RL**

SKU: IRL

**RIB TYPE**

2¾" tall, tee-shaped rib with separate batten

**ATTACHMENT**

Mechanically seamed rib with clip

**THICKNESS (A)**

2½", 3", 4", 5", and 6"

**EXTERIOR TEXTURE**

Smooth

**STANDARD LENGTHS**

12'-0" to 53'-0"

**MINIMUM SLOPE**

½:12



Isoleren IM  
Regal White III  
Beta Technologies



Isoleren RL  
Patina Green  
Nebraska Correctional Center for Women



Isoleren ML  
Regal White III  
Universal Technical Institute



Isoleren SL  
Champagne  
New Quissett Facility





## STANDING SEAM & BATTEN SEAM

### OVERVIEW

ATAS offers several different types of standing and batten seam roof panels that utilize highly engineered fasteners for a concealed fastening system.

**FIELD-LOK** is a mechanically seamed standing seam panel system and is available in four different seam heights. The Triple-Lok design on the 2 $\frac{3}{8}$ " FLS panel creates one of the strongest mechanically locked seams on the market today. The 2" FLR panel is a double-locked structural panel that can meet severe load requirements. The 1 $\frac{1}{2}$ " FLM and 1" FLL panels are non-structural and double-locked.

**DUTCH SEAM** is a continuous standing seam panel with an integral seam. It is a highly engineered wind and rain resistant panel system, designed for strength and durability. The integral lock, seam design and clip prevent rotation of the seam and provides a stronger interlock during an uplift event.

**COLONIAL SEAM** is a cliplless, one-piece, positive-locking, standing seam panel. It is installed by hooking the panel into the previous panel and fastening with mechanical fasteners through pre-punched slots to allow for expansion and contraction.

**PC SYSTEM** is a two-part system offering a standing seam or a batten seam look. The standing seam option is available in straight, tapered, and curved applications. A unique feature of this system is that you can mix and match colors of the flat panel and the seam.

**MONARCH BATTEN SEAM** utilizes the Wind-Lok positive locking feature which makes it virtually impossible for panels to slip apart. A vertical "leg" is formed as an extra water barrier with a structural clip hooked over the leg, allowing for unlimited thermal expansion and contraction of the system.

All standing seam and batten seam roof panels share the following specifications, unless otherwise noted:

### MAXIMUM PANEL LENGTH

Transportation limitations and/or product and project design considerations

### FINISH

70% PVDF

### COLORS

Choice of over 40 stock colors, custom colors and finishes available\*

### ANODIZED

Clear Satin, Dark Bronze

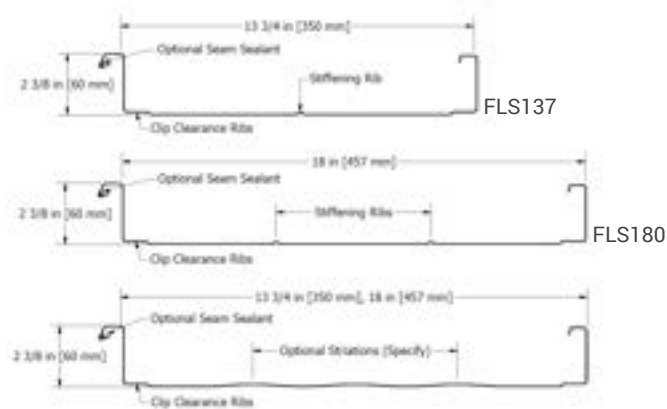
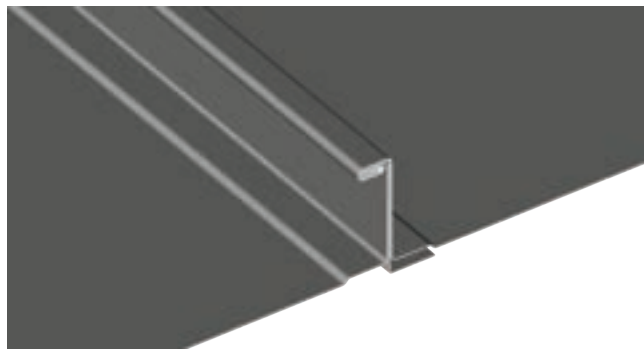
### ACCESSORIES

A complete line of trims available in matching colors, gauge, and finish or as specified

\*Subject to minimum quantities and extended lead time. Inquire for material and panel coverage availability.







### 2 3/8" FIELD-LOK™

SKU: FLS137, FLS180

#### MATERIAL

.032, .040 aluminum,  
24, 22\* ga. metallic coated steel,  
24 ga. 55% Al-Zn alloy coated steel with acrylic coating

#### PANEL SPECS

Coverage: 13 3/4", 18"  
(Stiffening ribs standard, specify without ribs or striations)  
Minimum Length: 4'-0"  
Seam Height: 2 3/8"

#### AVAILABLE

Factory panel pre-notching available.  
Contact ATAS for specifics.

#### TEXTURE

Smooth or Stucco Embossed (available in 24 ga. steel & .032 & .040 aluminum)

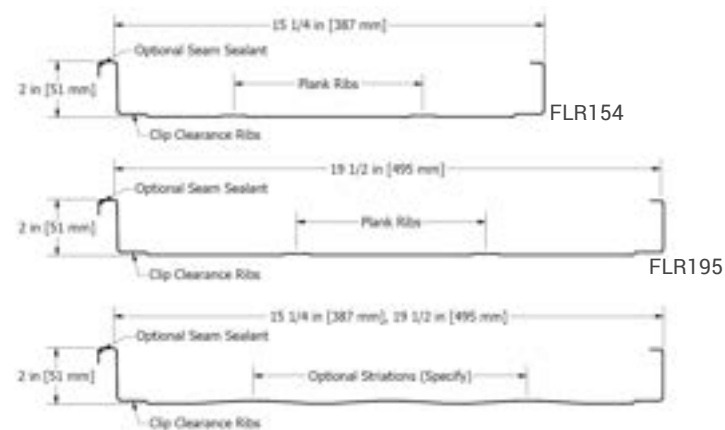
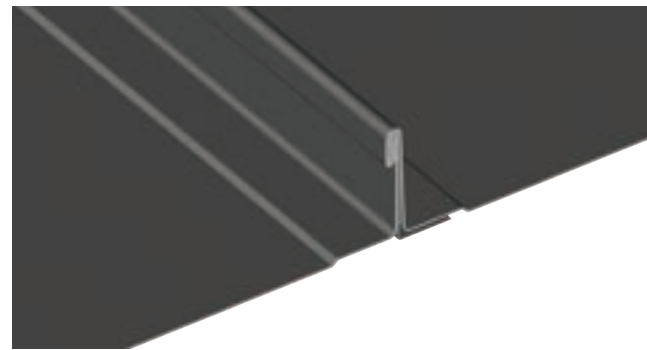
#### MINIMUM SLOPE

1/2:12

[www.atas.com/fls](http://www.atas.com/fls)



FLS Series standing seam panel features a Triple-Lok design



### 2" FIELD-LOK™

SKU: FLR154, FLR195, FLR999

#### MATERIAL

.032, .040 aluminum  
24, 22\* ga. metallic coated steel  
24 ga. 55% Al-Zn alloy coated steel with acrylic coating  
16, 20 oz. copper\*<sup>^</sup>  
.7 mm zinc\*<sup>^</sup>  
.0197 classic & tin matte stainless steel\*<sup>^</sup>  
<sup>^</sup>Inquire for available panel widths

#### PANEL SPECS

Coverage: 15 1/4", 19 1/2"  
Custom widths available (Plank ribs standard, specify without ribs or striations)  
Minimum Length: 4'-0"  
Seam Height: 2"

#### AVAILABLE

Tapered  
Factory panel pre-notching available.  
Contact ATAS for specifics.

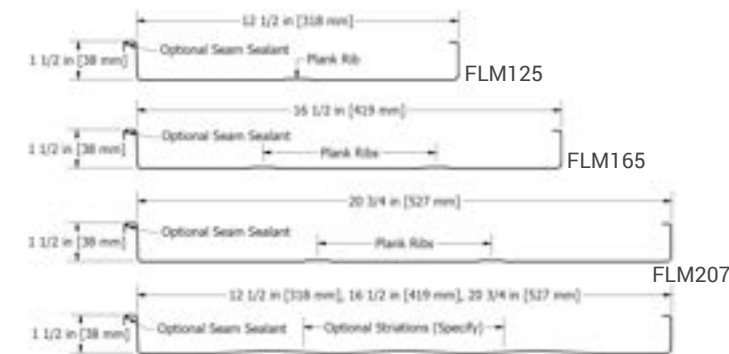
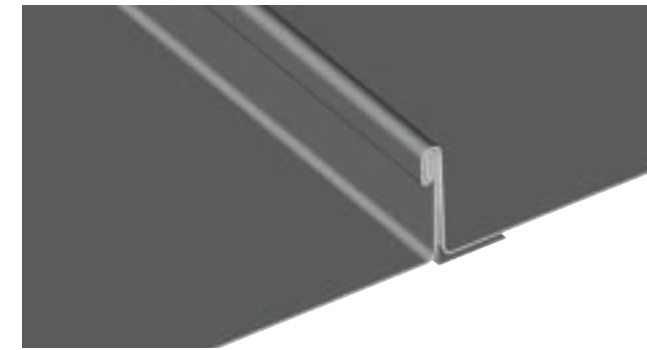
#### TEXTURE

Smooth or Stucco Embossed (available in 24 ga. steel & .032 aluminum)

#### MINIMUM SLOPE

1/2:12

[www.atas.com/flr](http://www.atas.com/flr)



### 1 1/2" FIELD-LOK™

SKU: FLM125, FLM165, FLM207, FLM999

#### MATERIAL

.032, .040 aluminum  
24, 22\* ga. metallic coated steel  
24 ga. 55% Al-Zn alloy coated steel with acrylic coating  
16, 20 oz. copper\*<sup>^</sup>  
.7 mm zinc\*<sup>^</sup>  
.0197 classic & tin matte stainless steel\*<sup>^</sup>  
<sup>^</sup>Inquire for available panel widths

#### PANEL SPECS

Coverage: 12 1/2", 16 1/2", 20 3/4"  
Custom widths available\* (Plank ribs standard, specify without ribs or striations)  
Minimum Length: 4'-0"  
Seam Height: 1 1/2"

#### AVAILABLE

Tapered, Stretch Curved (Convex)  
Factory panel pre-notching available.  
Contact ATAS for specifics.

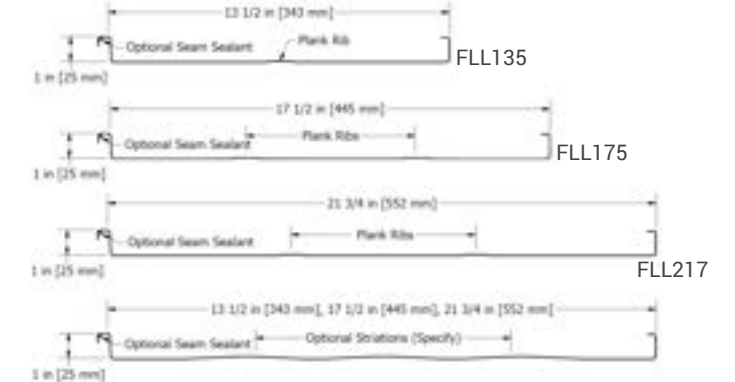
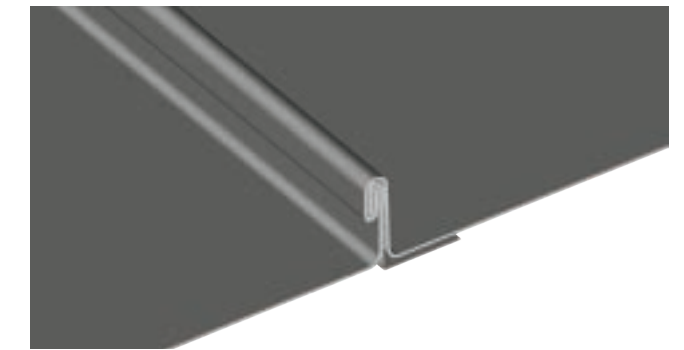
#### TEXTURE

Smooth or Stucco Embossed (available in 24 ga. steel & .032 aluminum)

#### MINIMUM SLOPE

2:12 depending on climate conditions

[www.atas.com/flm](http://www.atas.com/flm)



### 1" FIELD-LOK™

SKU: FLL135, FLL175, FLL217, FLL999

#### MATERIAL

.032, .040 aluminum  
24, 22\* ga. metallic coated steel  
24 ga. 55% Al-Zn alloy coated steel with acrylic coating  
16, 20 oz. copper\*<sup>^</sup>  
.7 mm zinc\*<sup>^</sup>  
.0197 classic & tin matte stainless steel\*<sup>^</sup>  
<sup>^</sup>Inquire for available panel widths

#### PANEL SPECS

Coverage: 13 1/2", 17 1/2", 21 3/4"  
Custom widths available\* (Plank ribs standard, specify without ribs or striations)  
Minimum Length: 4'-0"  
Seam Height: 1"

#### AVAILABLE

Tapered, Stretch Curved (Convex)  
Factory panel pre-notching available.  
Contact ATAS for specifics.

#### TEXTURE

Smooth or Stucco Embossed (available in 24 ga. steel & .032 aluminum)

#### MINIMUM SLOPE

2:12 depending on climate conditions

[www.atas.com/fll](http://www.atas.com/fll)



2 3/8" FIELD-LOK  
Charcoal Grey  
Nitschmann Middle School



1 1/2" FIELD-LOK, CUSTOM  
Copper  
1863 Club at Saratoga Race Track



2" FIELD-LOK  
Dove Grey  
Environmental Education & Resiliency Center



1" FIELD-LOK  
Slate Grey  
Private Residence





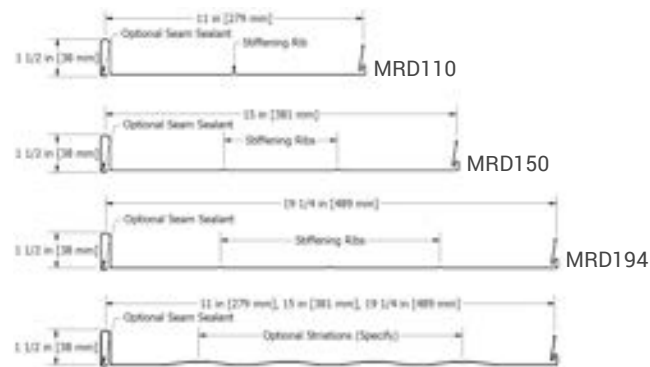
Stiffening Ribs



Without Ribs



Striations



## DUTCH SEAM®

SKU: MRD110, MRD150, MRD194

### MATERIAL

.032, .040 aluminum  
24, 22\* ga. metallic coated steel  
24 ga. 55% Al-Zn alloy coated steel with acrylic coating  
16, 20 oz. copper\*  
.8 mm zinc\* (MRD110 only)

### PANEL SPECS

Coverage: 11", 15", 19 1/4"  
(stiffening ribs standard, specify without ribs or with striations)  
Minimum Length: 2'-0"  
Seam Height: 1 1/2"

### AVAILABLE

Tapered

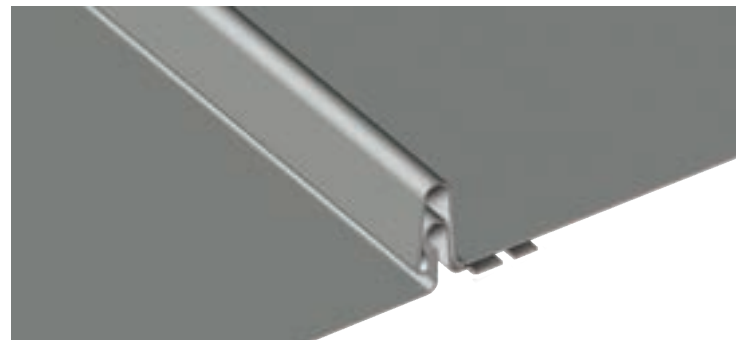
### TEXTURE

Smooth or Stucco Embossed

### MINIMUM SLOPE

2:12

[www.atas.com/dutchseam](http://www.atas.com/dutchseam)



## COLONIAL SEAM®

SKU: HCS120, HCS160, HCH110, HCH150

### MATERIAL

.032 aluminum  
24 ga. metallic coated steel

### PANEL SPECS

Coverage: 11 3/8", 12 3/8", 15 3/8", 16 3/8" (plank ribs or striations optional)  
Minimum Length: 2'-0"  
Maximum Length: 20'-0" for aluminum, 25'-0" for steel  
Seam Height: 1", 1 1/2"

### AVAILABLE

Factory panel pre-notching available.  
Contact ATAS for specifics.

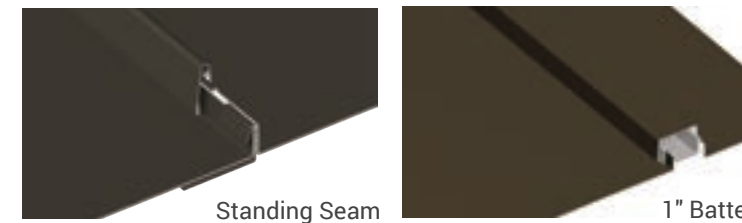
### TEXTURE

Smooth or Stucco Embossed

### MINIMUM SLOPE

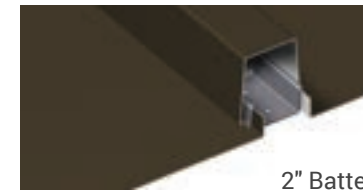
3:12

[www.atas.com/colonialseam](http://www.atas.com/colonialseam)

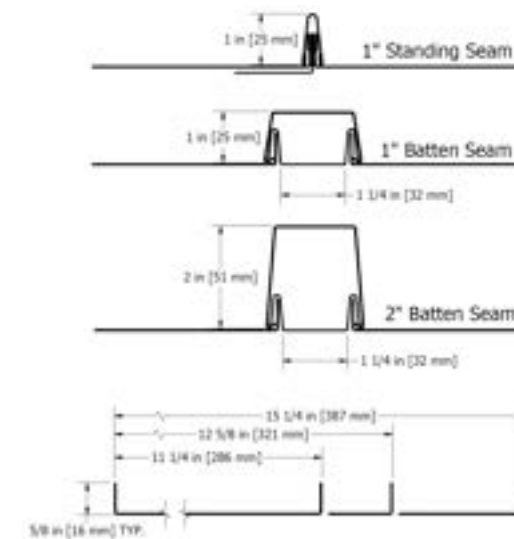


Standing Seam

1" Batten



2" Batten



## PC™ SYSTEM

SKU: Panel: PCP110, PCP120, PCP150, PCP999  
Seam: PCS114  
Batten: PCB001, PCB002  
Copper: PCP147

### MATERIAL

.032, .040 aluminum  
24, 22\* ga. metallic coated steel  
24 ga. 55% Al-Zn alloy coated steel with acrylic coating  
16 oz. copper\* (PCP147 only)

### PANEL SPECS

Coverage: 11 1/4", 12 5/8", 14 5/8"\*\*, 15 1/4"  
Custom widths available\*  
\*\*Copper and Dark Bronze Anodized only  
Minimum Length: 2'-0" for straight, 3'-0" for curved  
Standing Seam: 1"  
Batten Seam: 1" x 1 1/2" or 2" x 1 1/2"

### AVAILABLE

Straight, Tapered, Stretch Curved\* (Convex and Concave)  
\*Available in standing seam only

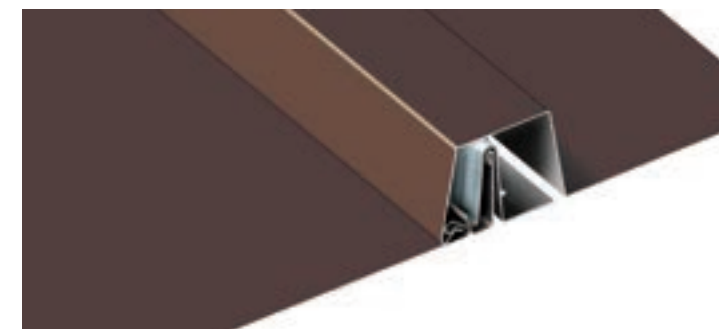
### TEXTURE

Smooth or Stucco Embossed

### MINIMUM SLOPE

3:12

[www.atas.com/pc](http://www.atas.com/pc)



## MONARCH™ BATTEN SEAM

SKU: MRB080, MRB120, MRB160

### MATERIAL

.032, .040, .050\* aluminum  
24, 22\* ga. metallic coated steel  
24 ga. 55% Al-Zn alloy coated steel with acrylic coating\*  
16, 20 oz. copper\*

### PANEL SPECS

Coverage: 8", 12", 16"  
(stiffening ribs standard, specify without)  
Minimum Length: 4'-0"  
Seam Height: 2"

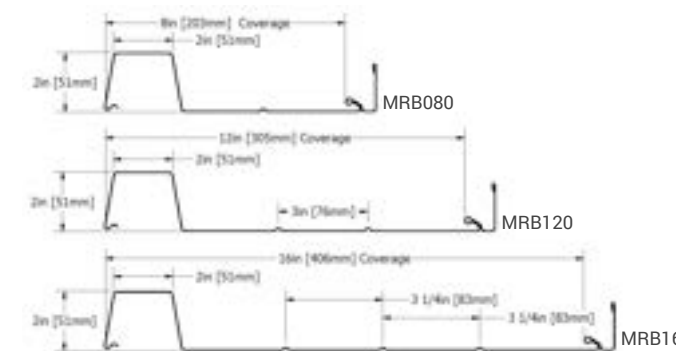
### TEXTURE

Smooth or Stucco Embossed

### MINIMUM SLOPE

2:12

[www.atas.com/monarch](http://www.atas.com/monarch)





COLONIAL SEAM  
Charcoal Grey  
Private Residence



CUSTOM PC SYSTEM BATTEN SEAM  
Sierra Tan  
O'Hara Elementary School



DUTCH SEAM  
Slate Grey  
Private Residence



MONARCH BATTEN SEAM  
Chocolate Brown  
Private Residence





## MODULAR ROOF PANELS

### OVERVIEW

Our modular roof systems include a variety of metal tiles and shingles. Metal tiles can add a unique aesthetic to your building's roof without the product weight and maintenance issues associated with traditional roofing tiles. ATAS metal shingles allow for unlimited design flexibility and creativity.

**SCANROOF** is a scalloped tile offering distinctive international styling with modern metal advantages. It's a structural steel panel that is easy-to-install and is the ideal roof system to stand up against storms, typhoons, hurricanes, damaging winds, and driving rains. ScanRoof is installed horizontally from eave to ridge, with panels being fully walkable throughout installation.

**TECHO TILE** has the look of a Spanish tile clay roof without the problems associated with its care. The aluminum panels are installed vertically up the slope of the roof and utilize an anti-siphoning overlap design, preventing water migration at the panel overlap. Due to the deep configuration in the form of an "S" in the Techo Tile panel profile, an air space allows for air flow between the panel and substrate, offering the potential for increased energy efficiency.

**RUMBA SHAKE** is a Bermuda style roof panel that allows you to achieve an exotic look requiring minimal maintenance. It is easily installed horizontally from eave to ridge, with concealed fasteners and clips. Its lightweight panel design is resistant to high wind, torrential rain, heavy snow, and ice loads.

**STANDING SEAM SHINGLE** has horizontal seams that are staggered to provide a historic standing seam appearance. Shingles are installed vertically from eave to ridge with concealed fasteners over a solid substrate, with an anchor clip and lock system. The four-way interlock design guards against wind-driven rain and wind uplift, while still allowing for air permeability.

**CASTLETOP** shingles are diamond-shaped aluminum shingles that give you the ability to mix and match colors for a more intricate design. CastleTop has an expanded polystyrene backer board which supports the panel during installation and aids in sound dampening. The tab interlock design of the shingles resists wind-uplift.

**ADVANTA SHINGLE** offers the appearance of asphalt shingles with the benefits of metal roofing. The simulated dimensional shingle formed from G-90 galvanized stucco embossed steel covers more than twice the area of an asphalt shingle and is easy to install horizontally from eave to ridge. The four-way interlock design guards against wind-driven rains and wind uplift, while still allowing for air permeability. Limited color availability.

All modular roof systems share the following specifications, unless otherwise noted:

### FINISH

70% PVDF

### COLORS

Choice of over 40 stock colors, custom colors and finishes available\*

### ACCESSORIES

A complete line of trims available in matching colors, gauge, and finish or as specified

\*Subject to minimum quantities and extended lead time. Inquire for material and panel coverage availability.



SCANROOF  
Brite Red  
Private Residence



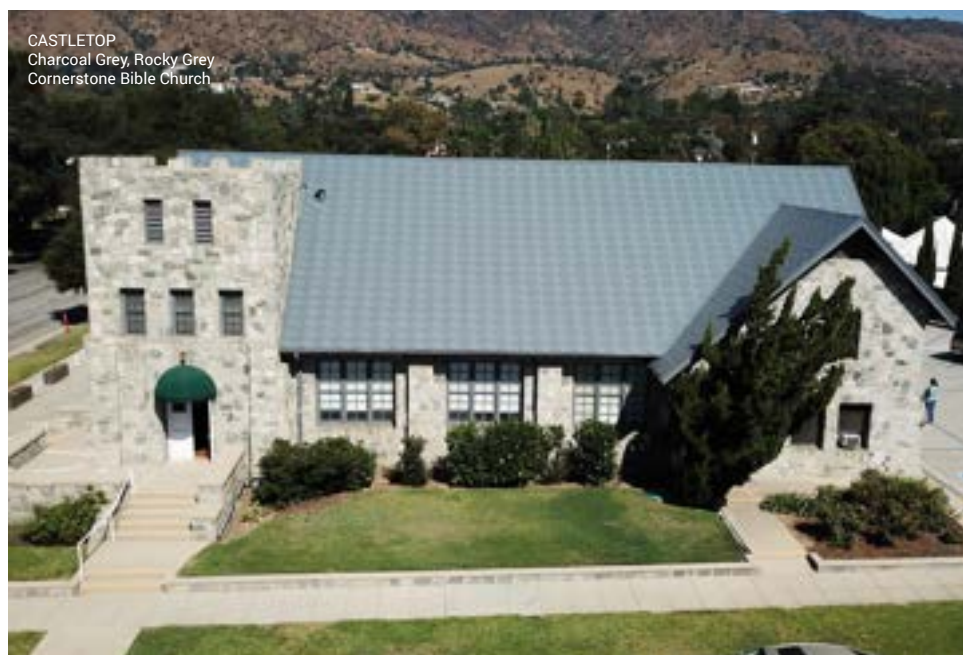
TECHO TILE  
Boysenberry  
Private Residence



STANDING SEAM SHINGLE  
Antique Patina  
Rainbow Falls Hydro Plant



RUMBA SHAKE  
Coppertone  
Private Residence

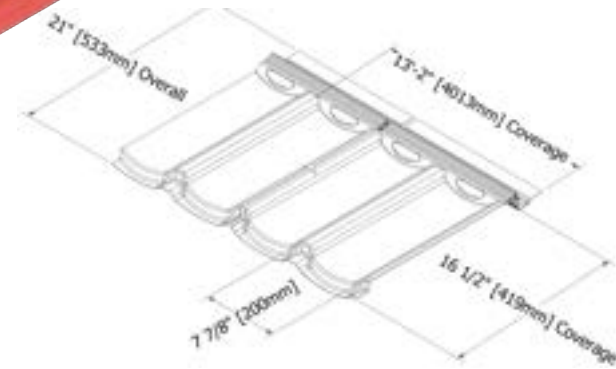
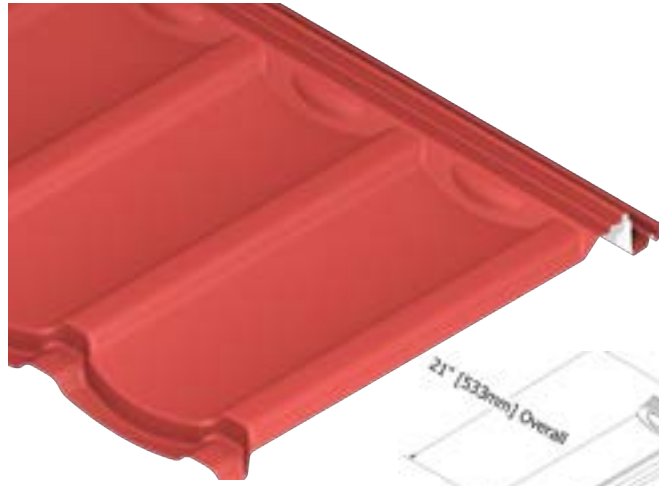


CASTLETOP  
Charcoal Grey, Rocky Grey  
Cornerstone Bible Church



ADVANTA SHINGLE  
Cape Cod Grey  
New Holy Cross Church of Christ W.I.C.





**SCANROOF™**

SKU: SCP163

**MATERIAL**

24 ga. metallic coated steel

**TILE SPECS**

Coverage: 16½" x 13'-2"

**TEXTURE**

Smooth

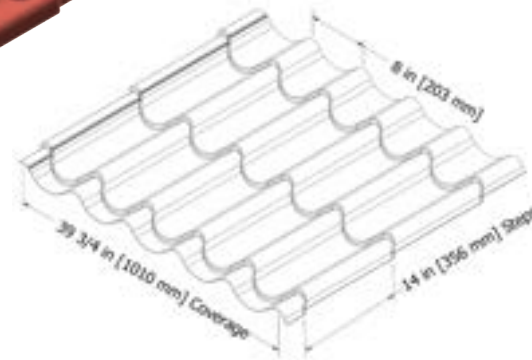
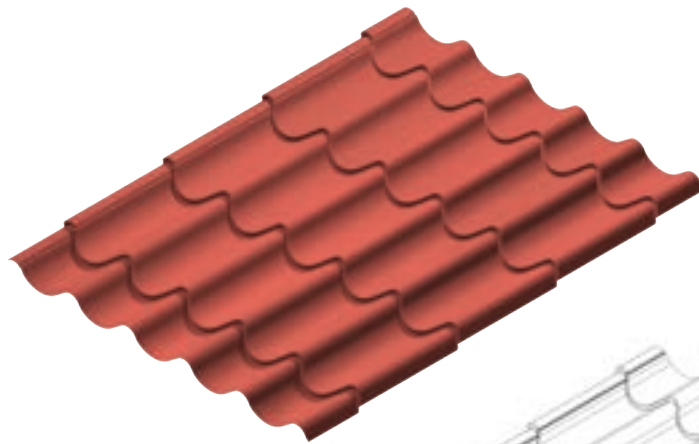
**MINIMUM SLOPE**

3:12

**COLORS**

35 stock colors (premium colors not recommended)  
Custom colors available\*

[www.atas.com/scanroof](http://www.atas.com/scanroof)



**TECHO TILE™**

SKU: SCT400

**MATERIAL**

.032 aluminum

**TILE SPECS**

14" Tile Step x 39¾" Coverage

**MINIMUM TILE LENGTH**

1'-6½"

**TEXTURE**

Smooth or Stucco Embossed

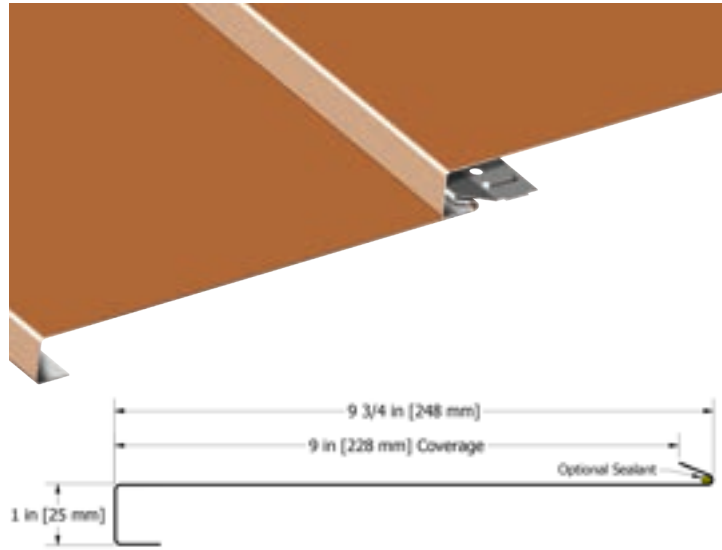
**MINIMUM SLOPE**

3:12

[www.atas.com/techofile](http://www.atas.com/techofile)







### RUMBA SHAKE™

SKU: HBS090

#### MATERIAL

.032, .040 aluminum  
24, 22\* ga. metallic coated steel  
16 oz. copper\*  
.8 mm zinc\*

#### SHINGLE SPECS

Coverage: 9"  
Length: 12'-0", 20'-0"

#### TEXTURE

Smooth, Stucco Embossed, or Wood Grain Embossed (24 ga. metallic coated steel, .032 aluminum & .040 aluminum only)

#### ANODIZED

Clear Satin, Dark Bronze

#### FASTENERS

Concealed fasteners and clips

#### MINIMUM SLOPE

4:12

[www.atas.com/rumbashake](http://www.atas.com/rumbashake)



### CASTLETOP®

SKU: HCT160

#### MATERIAL

.032 aluminum  
16 oz. copper\*  
.7 mm zinc\*

#### SHINGLE SPECS

Size: 15 3/4" x 15 3/4"  
Coverage: 13 1/2" x 13 1/2"

#### TEXTURE

Smooth (copper and zinc only)  
Stucco Embossed (aluminum only)

#### ANODIZED

Clear Satin, Dark Bronze

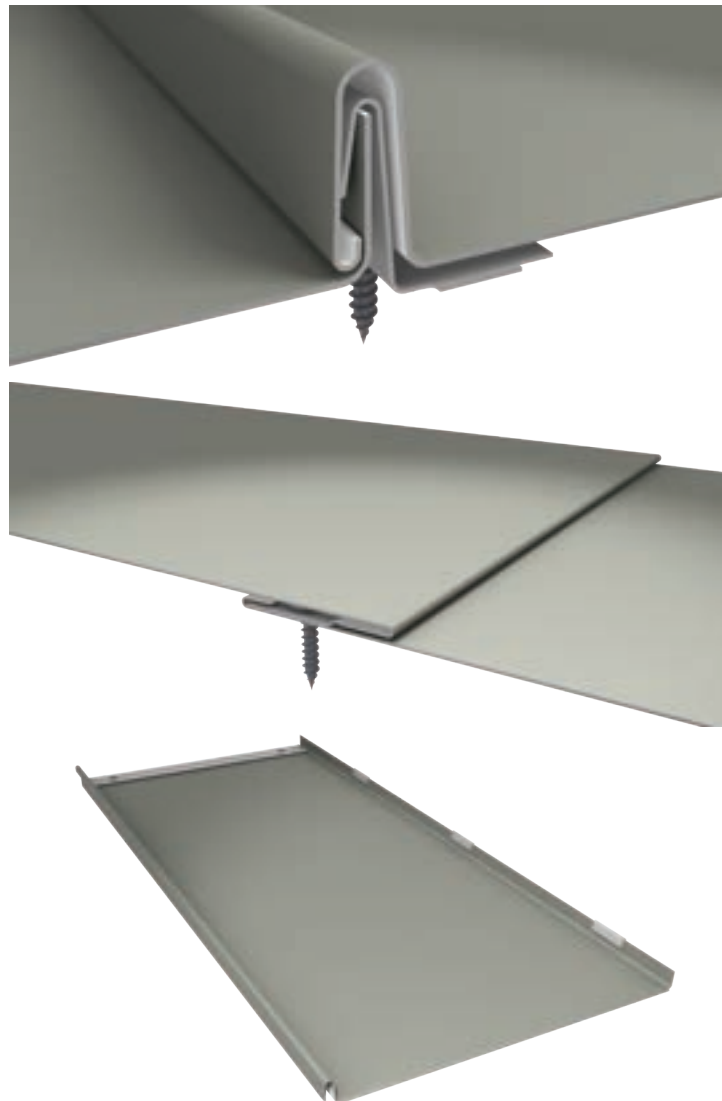
#### FASTENERS

Concealed fasteners

#### MINIMUM SLOPE

3:12

[www.atas.com/castletoproofs](http://www.atas.com/castletoproofs)



### STANDING SEAM SHINGLE™

SKU: HSS164 (36"), HSS165 (60")

#### MATERIAL

.032 aluminum  
16 oz. copper\*

#### SHINGLE SPECS

Coverage: 16" x 36" or 60"  
Seam Height: 1"

#### TEXTURE

Smooth

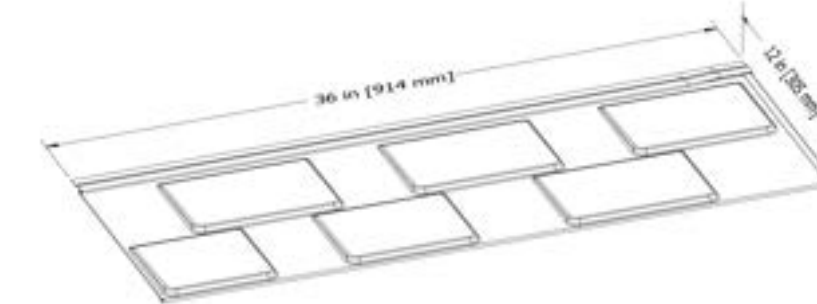
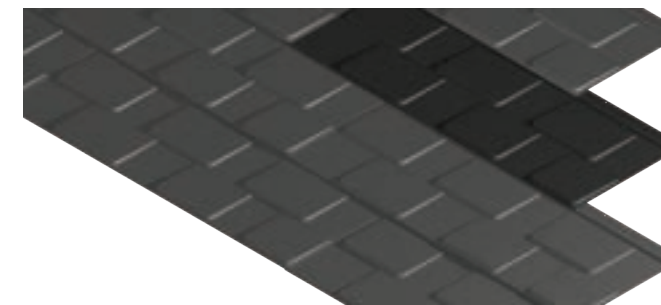
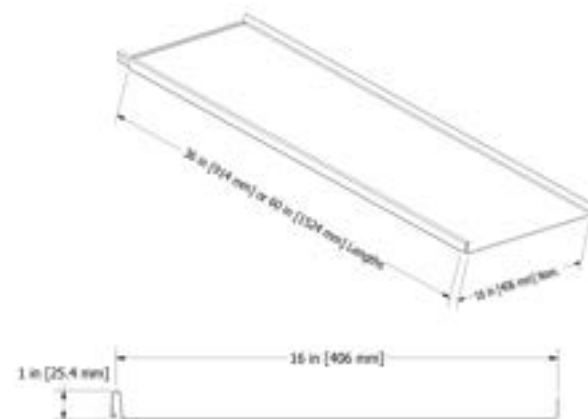
#### FASTENERS

Concealed fasteners and clips

#### MINIMUM SLOPE

4:12

[www.atas.com/standingseamshingle](http://www.atas.com/standingseamshingle)



### ADVANTA® SHINGLE

SKU: HAS300

#### MATERIAL

29 ga. metallic coated steel

#### SHINGLE SPECS

Coverage: 12" x 36"

#### TEXTURE

Stucco Embossed

#### COLORS

Stock Colors: Mission Red, Forest Green, Char Brown, Sierra Tan, Slate Grey, Rocky Grey, Redwood, Bone White

Advanta Classic Series: Nine stock colors (left)

#### FASTENERS

Concealed fasteners

#### MINIMUM SLOPE

3:12

[www.atas.com/advanta](http://www.atas.com/advanta)

#### ADVANTA CLASSIC SERIES



Asheland Slate (AS)



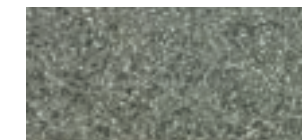
Baja Slate (BS)



Quarry Slate (QS)



Willow Slate (WS)



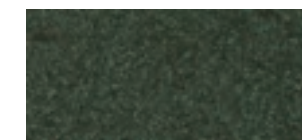
Beech Tree (BT)



Deep Granite (DG)



Rocky Cliff (RC)



Shaded Spruce (SS)



Weathered Stone (WN)



RUMBA SHAKE  
Black  
Private Residence



CASTLETOP  
Ascot White  
Elsyan Beach Resort



STANDING SEAM SHINGLE  
Slate Grey  
CF Martin and Co., Inc.

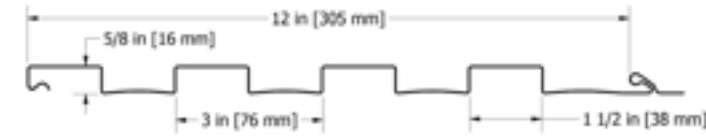


ADVANTA  
Slate Grey  
AK Coal Resources, Inc.





## STRETCH CURVED



### ARC-METAFOR™

SKU: MFX120 (convex, minimum radius 5'-9"), MFV120 (concave, minimum radius 10'-0")

#### MATERIAL

.032 aluminum

#### PANEL SPECS

Coverage: 12"  
Minimum Length: 4'-0"  
Panel Height: 5/8"

#### FASTENERS

Concealed

#### AVAILABLE

Stretch Curve

#### TEXTURE

Smooth or Stucco Embossed

[www.atas.com/arcmetafor](http://www.atas.com/arcmetafor)

### CURVED CORRUGATED PANEL

SKU: BWX374 (convex, minimum radius 10'-0"), BWV374 (concave, minimum radius 10'-0")

#### MATERIAL

.032, .040, .050 aluminum  
24, 22\* ga. metallic coated steel  
24, 22\*, 20\*, 18\* ga. 55% Al-Zn alloy coated steel with acrylic coating

#### PANEL SPECS

Coverage: 37 1/4"  
Minimum Length: 6'-0"  
Panel Height: 7/8"

#### FASTENER

Exposed

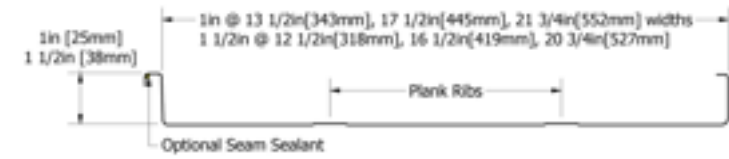
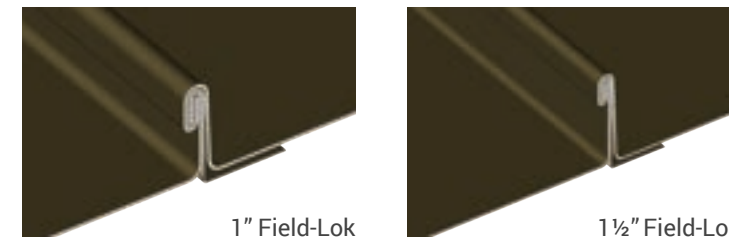
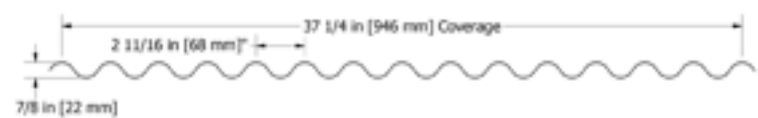
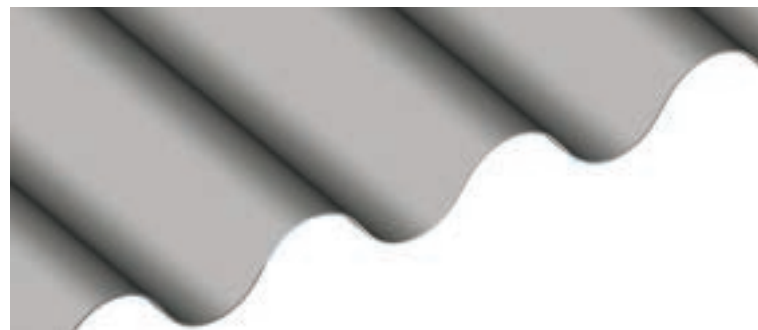
#### AVAILABLE

Stretch Curve & Crimp Curve

#### TEXTURE

Smooth or Stucco Embossed

[www.atas.com/curvedcorrugated](http://www.atas.com/curvedcorrugated)



For panel-specific information, see page 49.



### CURVED FIELD-LOK™

SKU: FLX (convex, min. radius 8'-0" aluminum, 12'-0" steel)

#### MATERIAL

.032 aluminum  
24, 22\* ga. metallic coated steel  
24 ga. 55% Al-Zn alloy coated steel with acrylic coating  
16, 20 oz. copper\*

#### PANEL SPECS

Coverage: 1" seam - 13 1/2", 17 1/2", 21 3/4"  
1 1/2" seam - 12 1/2", 16 1/2", 20 3/4" | Custom widths available  
Minimum Length: 4'-0"  
Seam Height: 1", 1 1/2"

#### AVAILABLE

Dome (1" seam height only)

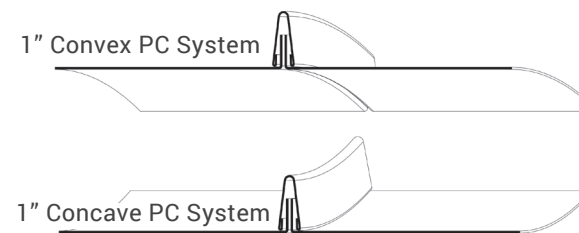
#### TEXTURE

Smooth

#### MINIMUM SLOPE

2:12 depending on climate conditions

[www.atas.com/curvedfieldlok](http://www.atas.com/curvedfieldlok)



### CURVED PC™ SYSTEM

SKU: PCX (convex, minimum radius 2'-9"), PCV (concave, minimum radius 4'-0")

#### MATERIAL

.032, .040 aluminum  
24 ga. metallic coated steel  
24 ga. 55% Al-Zn alloy coated steel with acrylic coating  
16 oz. copper\*

#### PANEL SPECS

Coverage: 11 1/4", 12 5/8", 14 5/8"\*\*, 15 1/4"  
\*\*Copper and Dark Bronze Anodized only  
Minimum Length: 3'-0"  
Seam Height: 1"

#### AVAILABLE

Tapered, Dome

#### TEXTURE

Smooth or Stucco Embossed

#### MINIMUM SLOPE

3:12

[www.atas.com/curvedpc](http://www.atas.com/curvedpc)



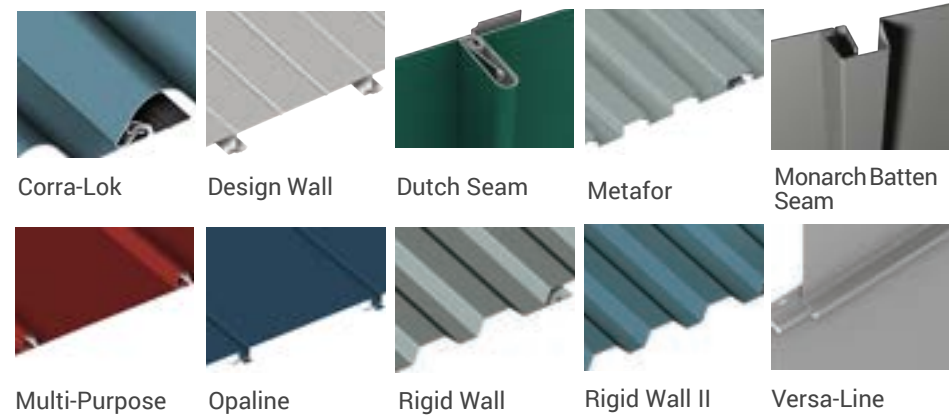
# INTERIORS, CEILINGS, & SOFFITS

## INTERIOR APPLICATIONS

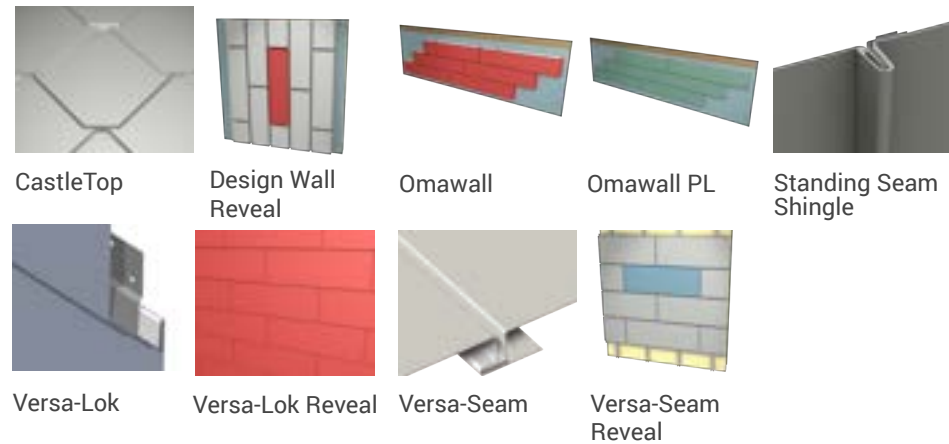
From a functional and aesthetically pleasing linear ceiling system, to a wide variety of attractive wall panel options, a building's interior can benefit from the beauty and durability of metal. Curved, tapered, texture, color, wood look, and custom capabilities expand your options and bring design ideas to life. Acoustical sound control systems available for ceilings and walls, with NRC (Noise Reduction Coefficient) ratings of up to 1.0. Here are just some examples of ATAS standard profiles that can be used in interior applications.

[www.atas.com/interiors](http://www.atas.com/interiors)

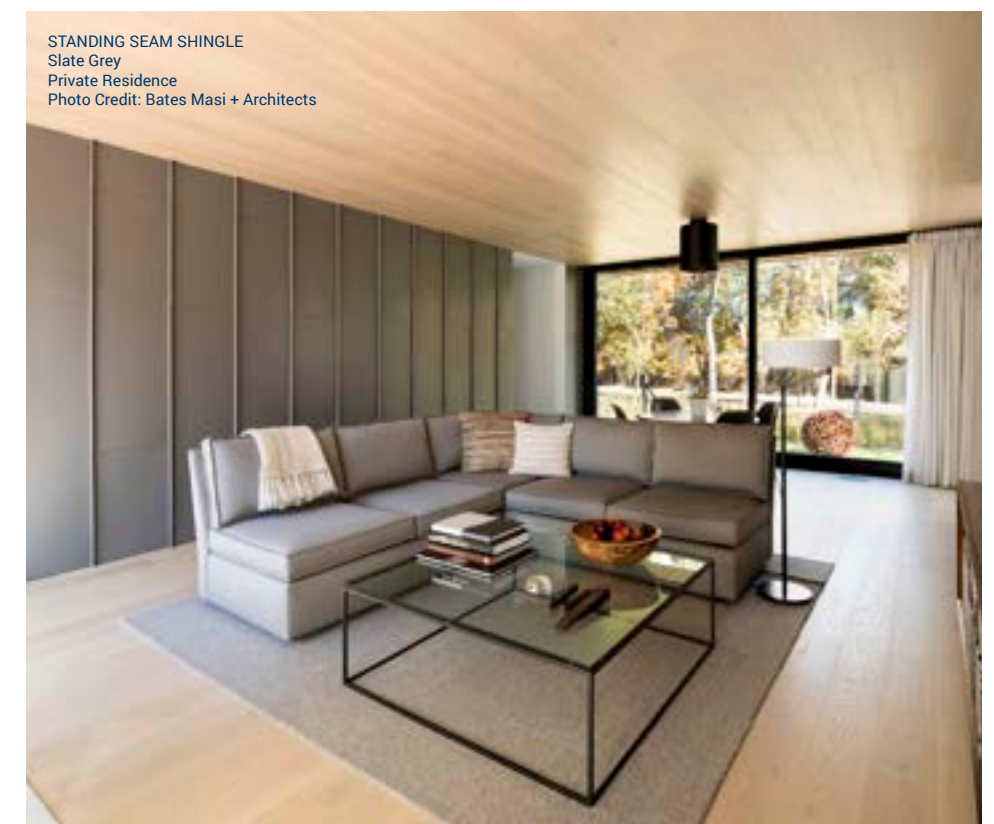
## CONCEALED FASTENER WALL PANELS



## MODULAR WALL PANELS

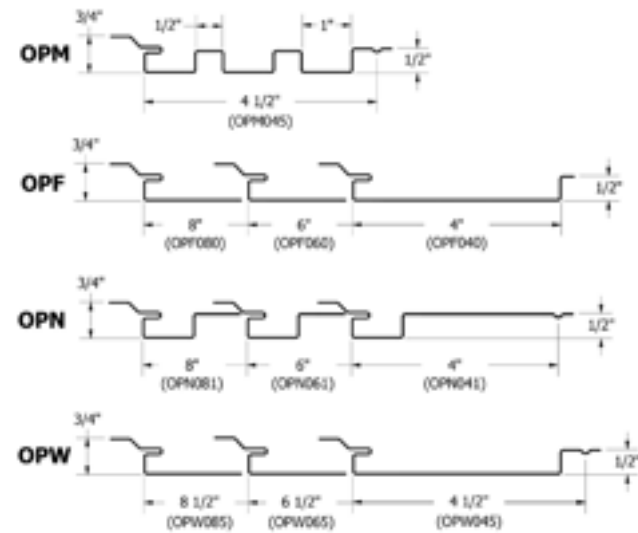
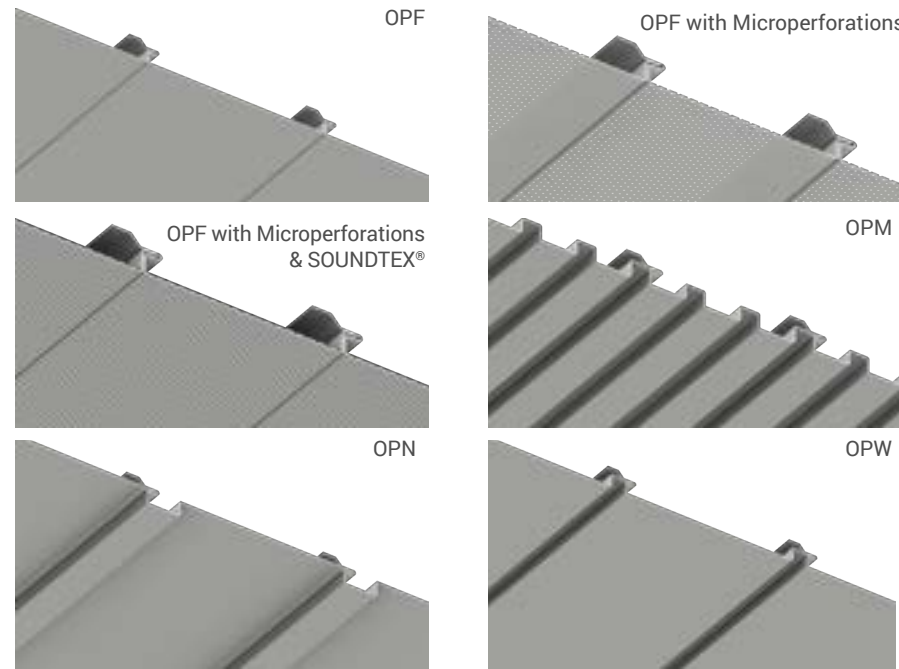


## EXPOSED FASTENER WALL PANELS





## SUSPENDED CEILING SYSTEMS



Flush Opaline (OPF) Ceiling with Snap In Carrier    Reveal Opaline (OPW) Ceiling with Snap In Carrier    Reveal Opaline (OPW) Ceiling with Snap In Carrier Mechanically Attached to a Drywall Grid

### OPALINE™

SKU: OPF, OPM, OPN, OPW

#### MATERIAL

.032, .040 aluminum  
24 ga. metallic coated steel

#### PANEL SPECS

Coverage: OPF: 4", 6", 8"  
OPM: 4 1/2"  
OPN: 4", 6", 8"  
OPW: 4 1/2", 6 1/2", 8 1/2"  
Minimum Length: 1'-6"  
Maximum Length: 20'-0"  
Depth: 3/4"

#### TEXTURE

Smooth, Stucco Embossed, or Wood Grain Embossed

#### FINISH

70% PVDF, Wood Grain Finishes

#### COLORS

Choice of over 40 stock colors  
Custom colors available\*

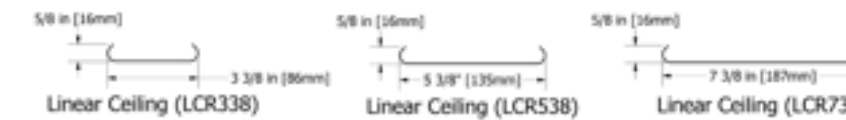
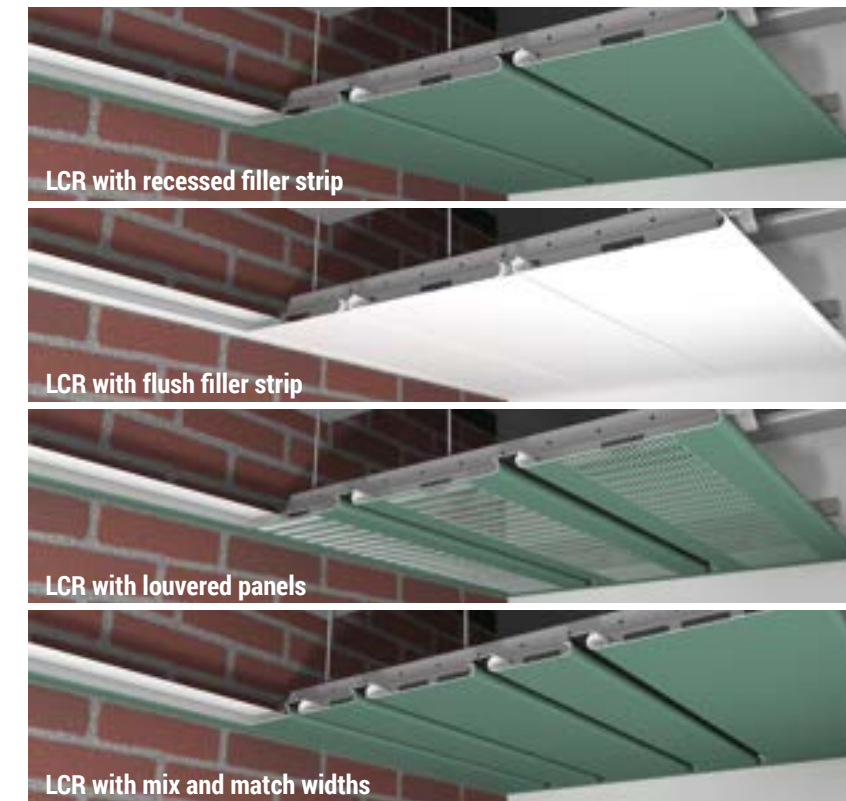
#### CARRIER

Opaline is available with a suspended snap-in carrier or is mechanically attached.

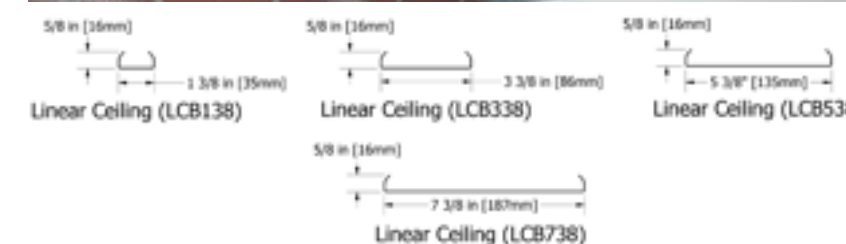
\*Subject to minimum quantities and longer lead time. Inquire for availability.

[www.atas.com/opalineceiling](http://www.atas.com/opalineceiling)

### ROUND EDGE:



### BOX STYLE:



### LINEAR CEILING™

SKU:  
Round Edge: LCR338, LCR538, LCR738  
Box Style: LCB138, LCB338, LCB538, LCB738

#### MATERIAL

.019 (only available for LCB338 & LCR338),  
.032 aluminum

#### PANEL SPECS

LCR Width: 3 3/8", 5 3/8", 7 3/8" | 4", 6", 8" coverage with filler strips  
LCB Width: 1 3/8", 3 3/8", 5 3/8", 7 3/8" | 2", 4", 6", 8" coverage with filler strips  
Length: Minimum 4'-0", maximum 20'-0" (LCB138 is limited to a 12' length)  
Height: 5/8"

#### TEXTURE

Smooth  
Wood Grain Embossed (.032 aluminum only)

#### FINISH

70% PVDF, Mirrored, Wood Grain Finishes

#### COLORS

Choice of over 40 stock colors in .032 aluminum and .019 available in Bone White with a 70% PVDF finish.

Custom colors available\*

#### ANODIZED

Clear Satin, Dark Bronze

#### ACCESSORIES

Suspended carrier, a complete line of trims available

#### CARRIER

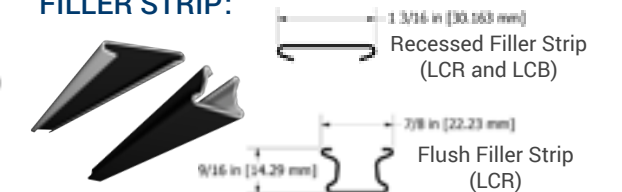
Metal: Aluminum  
Gauge: .040  
Length: Standard 12'-0"

#### FILLER STRIPS (OPTIONAL)

Available in .019 aluminum in Black or Bone White

\*Subject to minimum quantities and extended lead time. Inquire for material and panel coverage availability.

#### FILLER STRIP:



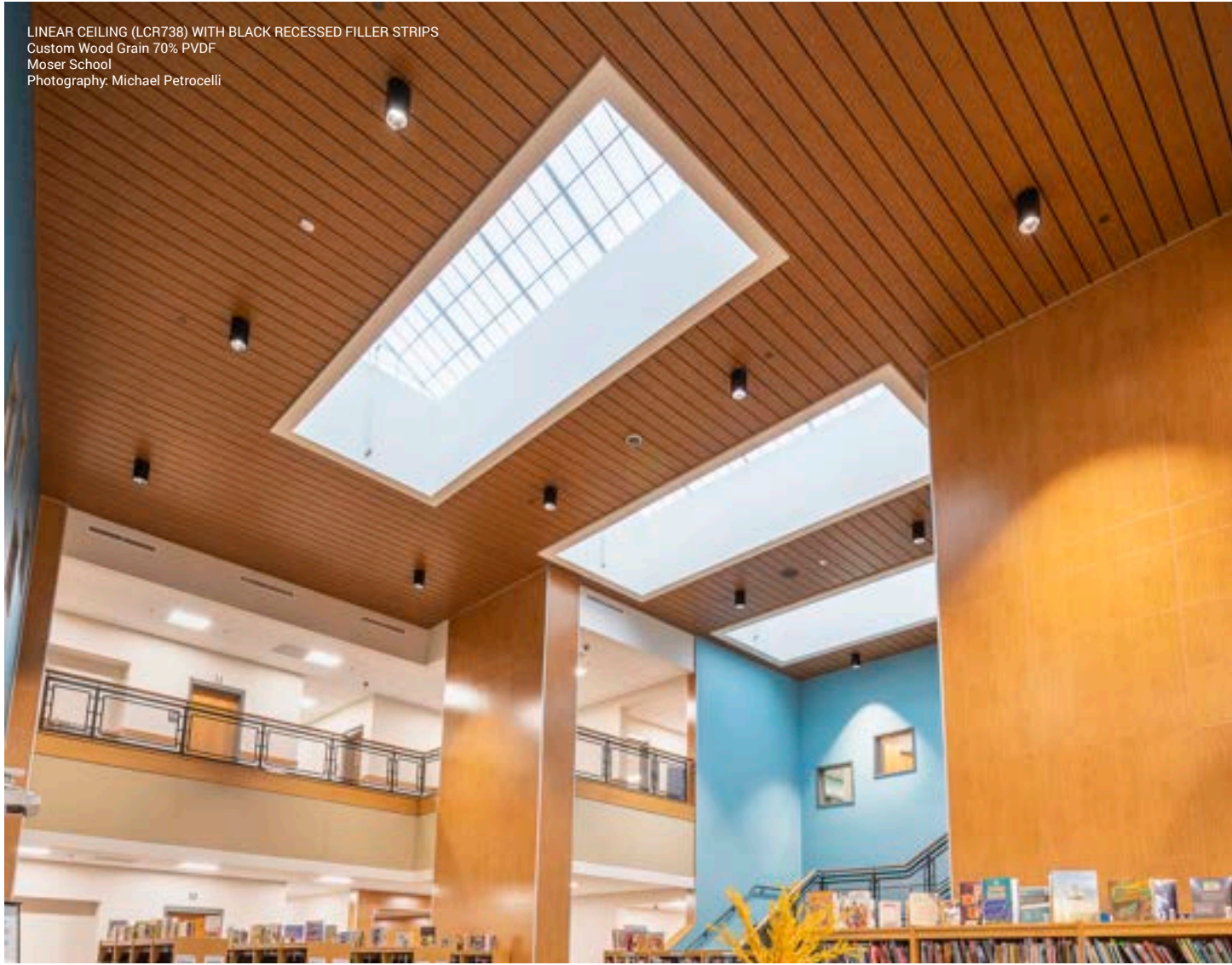
## SPECIALTY CEILINGS

We also offer Specialty Ceilings as an economical way to address issues of noise reduction while creating a distinctive, graphic look. Choose from a wide variety of attractive, flexible options.

[www.atas.com/specialtyceiling](http://www.atas.com/specialtyceiling)



LINEAR CEILING (LCR738) WITH BLACK RECESSED FILLER STRIPS  
Custom Wood Grain 70% PVDF  
Moser School  
Photography: Michael Petrocelli



SPECIALTY CEILING



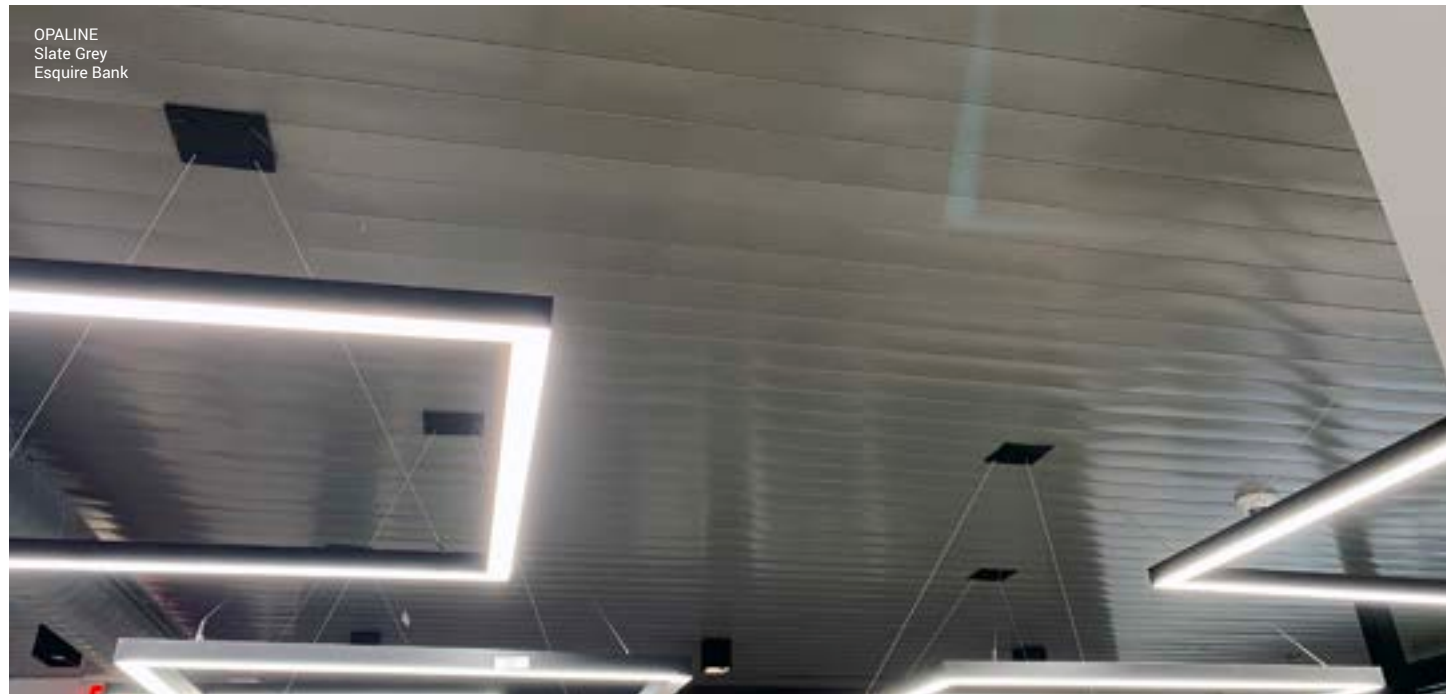
SPECIALTY CEILING



SPECIALTY CEILING



OPALINE  
Slate Grey  
Esquire Bank

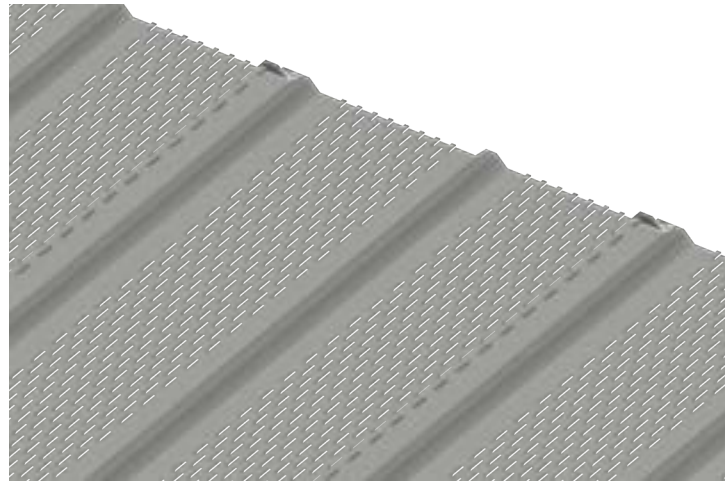


SPECIALTY CEILING





# SOFFITS



## WIND-LOK® SOFFIT

SKU: MPS120, MPV120

### MATERIAL

.019, .032 aluminum

### PANEL SPECS

Coverage: 12"

Length: 12'-0", special lengths are available with an 8'-0" minimum, maximum 25'-0"

Height: 3/8"

### TEXTURE

Smooth, Stucco Embossed, Lanced, or Wood Grain Embossed (.032 aluminum only)

### FINISH

70% PVDF

### COLORS

Choice of over 40 stock colors in .032 aluminum, and .019, available in Bone White only. Custom colors available\*

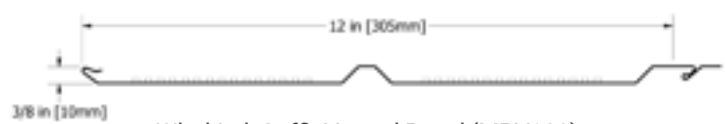
### ANODIZED

Clear Satin, Dark Bronze (MPS120 only)

[www.atas.com/windlok](http://www.atas.com/windlok)



Wind-Lok Soffit Panel (MPS120)



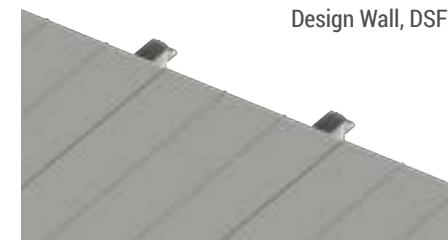
Wind-Lok Soffit Vented Panel (MPV120)

WIND-LOK (MPS120, MPV120)  
Sierra Tan  
Raleigh Assembly of God

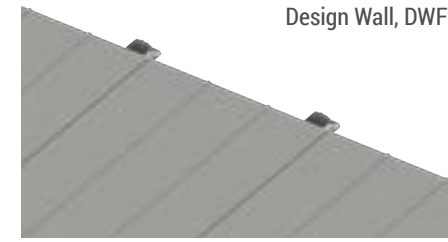


# ADDITIONAL SOFFIT OPTIONS

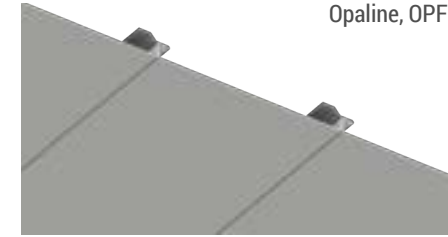
## FLUSH



Design Wall, DSF

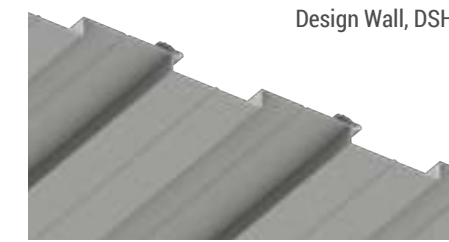


Design Wall, DWF



Opaline, OPF

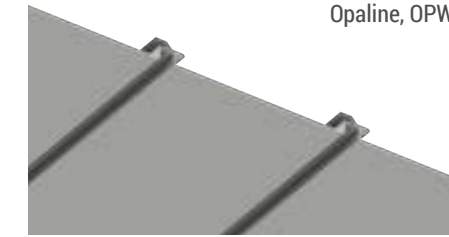
## REVEAL



Design Wall, DSH

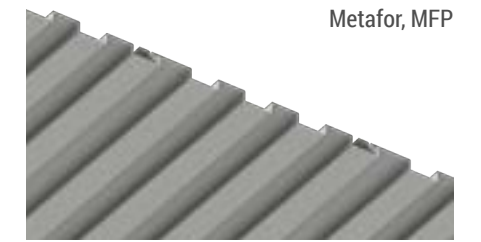


Design Wall, DWH

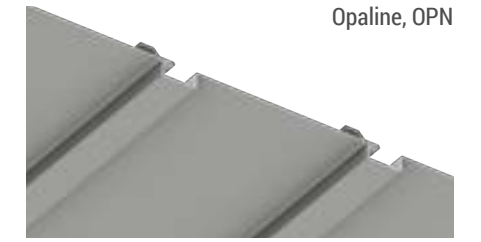


Opaline, OPW

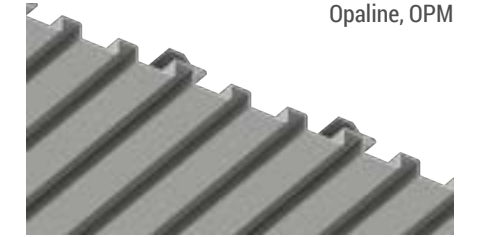
## RIBBED



Metafor, MFP

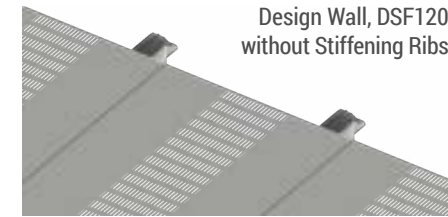


Opaline, OPN

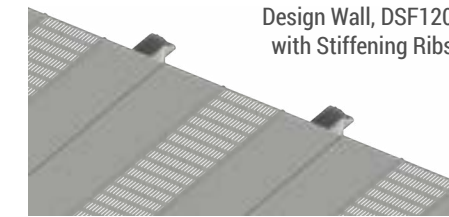


Opaline, OPM

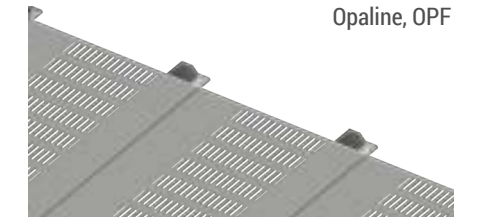
## FLUSH & LOUVERED/VENTED OPTIONS



Design Wall, DSF120  
without Stiffening Ribs



Design Wall, DSF120  
with Stiffening Ribs



Opaline, OPF

[www.atas.com/soffit](http://www.atas.com/soffit)



OPALINE (OPF)  
Bone White  
McCutchanville Elementary School



## PERIMETER EDGE SYSTEMS

### OVERVIEW

In addition to our full line of standard items, ATAS International has the capability to design and fabricate custom perimeter edge systems to fit almost any project's needs. ATAS has been fabricating architectural metals for over 55 years, and has the expertise to provide custom solutions that not only look great, but also resist wind loads and terminate the roof so it remains secure and watertight. Whether the project requires a custom profile, a unique roof line, or special application, our products come equipped with industry expertise and technical support, including design and development assistance, product specifications guidance, and installation support.

### FEATURES APPLIED TO ALL PRODUCTS

Tested per ANSI/SPRI/FM 4435/ES-1 as required by code:

- Fascia systems tested per RE-1 and RE-2
- Coping systems tested per RE-3

Systems include:

- Concealed splice plates
- Pre-punched fastener slots and holes
- Required fasteners

Furnished in:

- 12'-0" standard lengths (custom lengths available). Curved applications
- Large variety of standard materials, gauges and colors:
  - 24 and 22 ga steel
  - .040, .050, .063 aluminum
  - Stainless steel, zinc, and copper
  - Over 40 standard 70% PVDF paint colors (not standard on all gauges)
  - Custom colors and gauges available

True curved radius and vaulted available on most products

Accessories available - standard cinched and sealed; optional in fully welded and post painted:

- Miters, tees, and zeeks
- End closures and end terms
- Peaks and valleys
- Custom conditions

[www.atas.com/perimeteredge](http://www.atas.com/perimeteredge)



RAPID-LOK FASCIA  
Custom Color  
Private Residence



VAULTED RAPID-LOK COPING  
Classic Bronze  
Stella at Riverstone



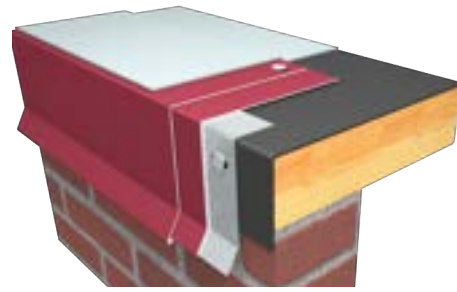
COLLECTOR BOX, CORRUGATED DOWNSPOUT  
Brite Red  
Ross Appliance



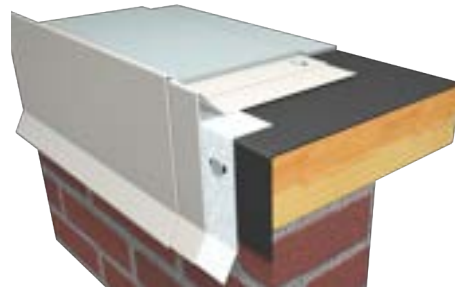
BOXED DOWNSPOUT, HP ULTRA GUTTER  
Custom Color  
Keansburg Police Station



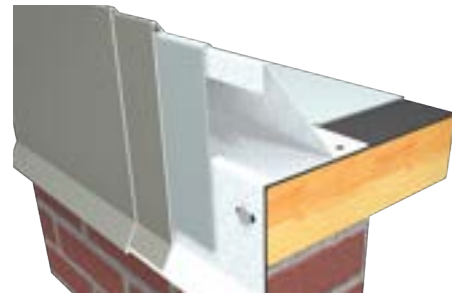
## FASCIA



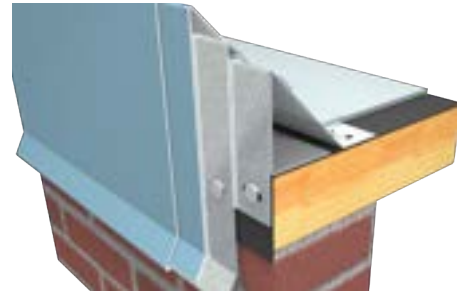
Drip Edge Fascia



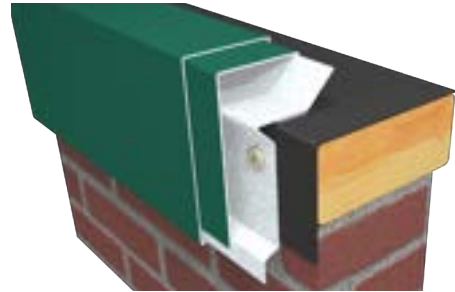
Gravel Stop Fascia



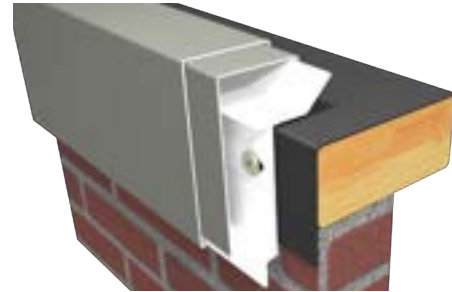
Edge-Lok 2 Fascia



Edge-Lok 3 Fascia

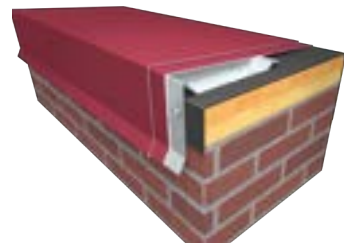


Rapid-Lok Fascia

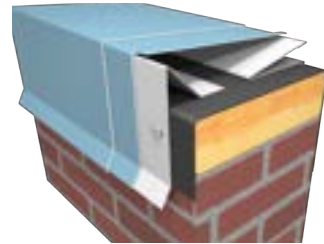


Rapid-Lok Extruded Fascia

## COPING



Continuous Cleat Coping



Rapid-Lok SL Coping

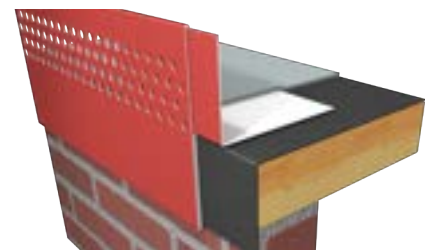


Rapid-Lok Coping

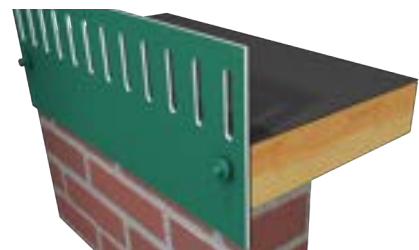


Rapid-Lok Ultra Coping

## SUPPLEMENTAL EDGE SYSTEM



Flow-Thru Gravel Stop



Drain Bar



Fascia Extender



Ledge Cap



1-piece Counter Flashing



2-piece Counter Flashing

## RAINWARE & WATER CONTROL



Commercial Gutters



K Gutter



Half-Round Gutter



Scuppers and Collector Boxes



Round, Box, and Corrugated Downspouts



Ultra HP Gutter





# ARCHITECTURAL ACCENTS

## OVERVIEW

In addition to our full line of standard items, ATAS International offers a wide range of custom fabrication capabilities to fit any project's needs. Available in over 40 70% PVDF stock colors, our products come equipped with industry expertise and technical support, including design and development assistance, product specifications guidance and installation support.

**CUSTOM FABRICATION** In addition to our full line of standard items, ATAS International offers a wide range of custom fabrication capabilities to fit any project's needs.

**COLUMN COVERS & BEAM WRAPS** offer design options to create a uniform appearance or cover an unsightly support. Columns over 12'-0" in height require stacked units with horizontal hairline joints. Covers are manufactured in a smooth surface. Three design options are available for the vertical jointures: a vertical hairline joint, vertical reveal jointure, and vertical reveal jointure with batten type flush insert. Capital and bases can be provided.

**ACCESSORIES AND ELITE TRIMS**, to complete your project and ensure long-term performance, from small to large projects, trims to high-performance fasteners, ATAS provides a full line of premium accessories. When you need installation details that look as good as your featured project design, ATAS exceeds those demands with factory-formed precision and quality craftsmanship.

**SECONDARY FRAMING** members are used for attachment and structural support for our panel systems in roof, wall and soffit applications. Components include hat, U and sub-girt type members. In addition, secondary framing members may be used in retro-fit roofing applications to create newly applied slope to an existing flat roof. Common applications include the following:

- Rainscreen systems
- Equipment screens
- Mansard type systems
- Soffit support framing
- Roof and Wall Retrofit



CUSTOM FABRICATED  
Champagne, Clear Satin Anodized  
Hamlin Groves



CUSTOM FABRICATED  
Medium Bronze  
Private Residence



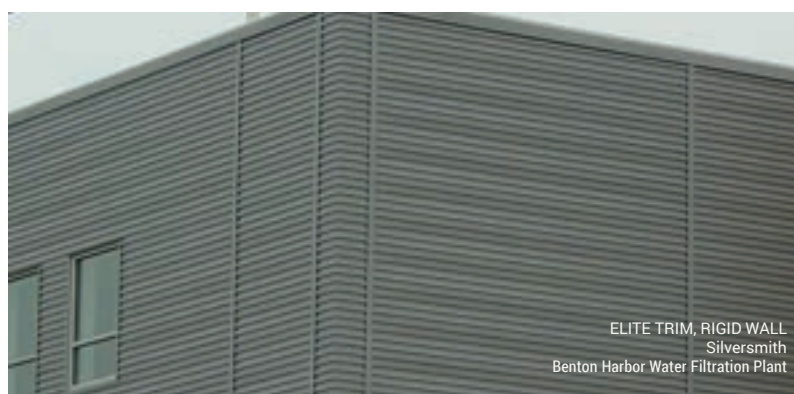
SQUARE COLUMN COVERS  
Rocky Grey  
Private Residence



MITERED OUTSIDE CORNERS (RIGID WALL)  
Ascot White  
Blumenfeld Development Group



SNOW RETENTION  
ColorGuard® in Charcoal Grey  
CVS



ELITE TRIM, RIGID WALL  
Silversmith  
Benton Harbor Water Filtration Plant



Z BOX  
Silver Smith  
The Residences at Twelve40



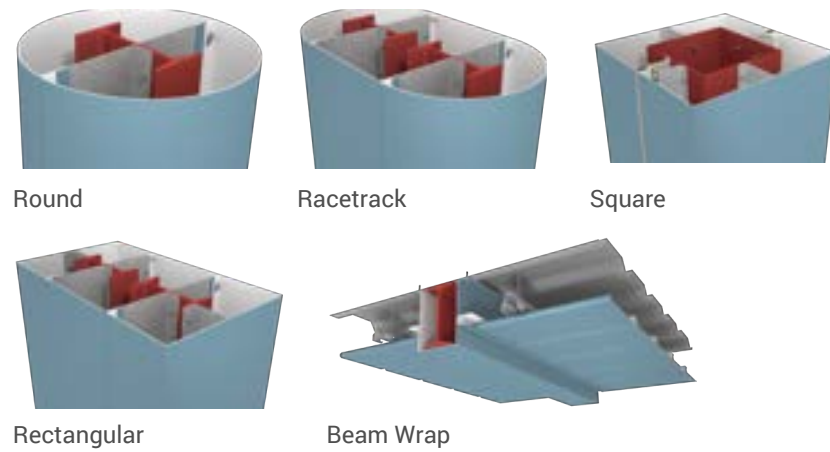
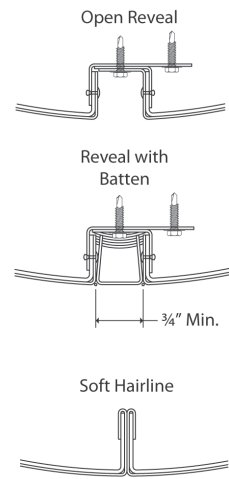
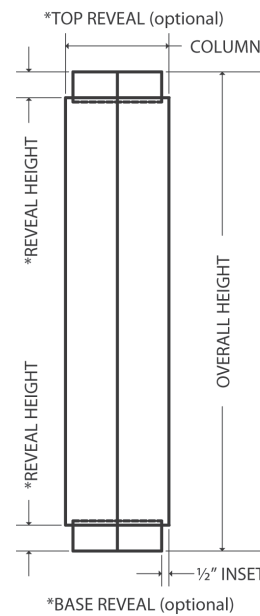
## CUSTOM FABRICATED PANELS

Let the ATAS team of technical advisors help bring your vision to reality. ATAS has proven performance in the fabrication of a wide variety of custom panels to meet many design requirements.

[www.atas.com/customfab](http://www.atas.com/customfab)



## COLUMN COVERS & BEAM WRAPS

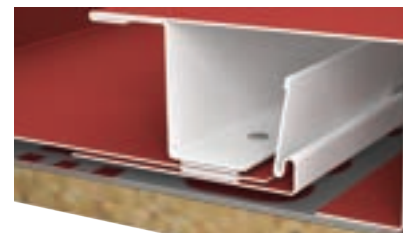


[www.atas.com/columncovers](http://www.atas.com/columncovers)

## ACCESSORIES

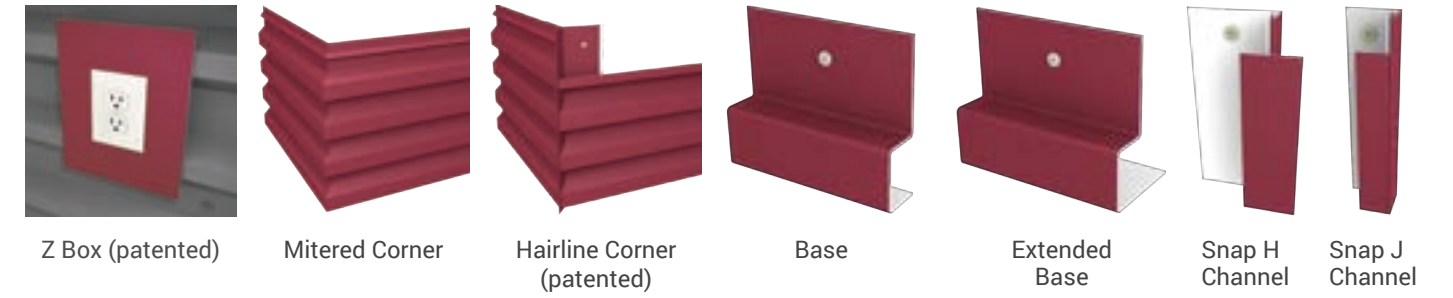
- Trims and Flashings
- Underlayments
- Pre-notched Trims
- Snow Retention Systems
- Butyl Sealant Tapes
- Tube Sealants
- High-Performance Fasteners
- Painted Stainless Steel Capped Exposed Fasteners
- and more

[www.atas.com/accessories](http://www.atas.com/accessories)

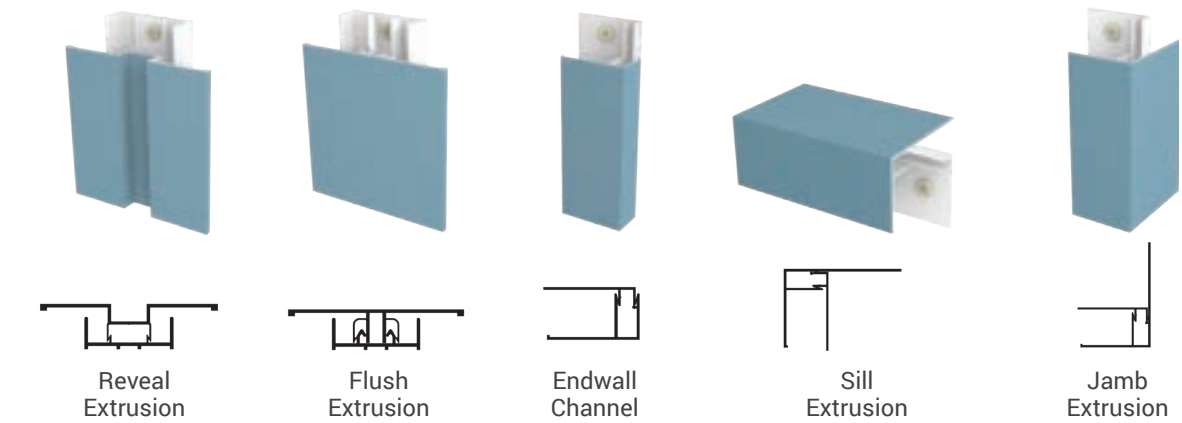


## ELITE TRIMS

### CUSTOM ELITE TRIMS



### ELITE TRIMS



[www.atas.com/elitetrims](http://www.atas.com/elitetrims)

## SECONDARY FRAMING COMPONENTS

### MATERIAL

.050 aluminum  
18, 24 ga. G90 galvanized steel

### SHAPES

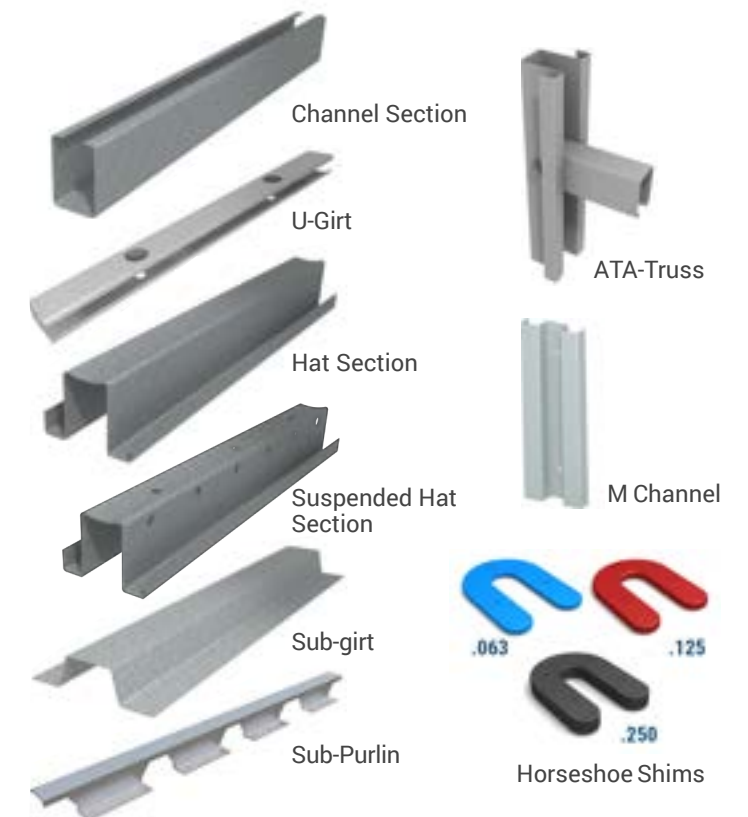
Structural U's, Hat Sections, and Sub-girts

### LENGTHS

Hat Sections:  
.050 aluminum & 24 ga. G90 galvanized steel: 12'-0"  
18 ga. G90 galvanized steel: 24'-0"

All other secondary framing components: 12'-0"

[www.atas.com/framing](http://www.atas.com/framing)





# SUSTAINABLE COMPONENTS

## OVERVIEW

ATAS products may contribute to LEED® credits and is a participant in the Metal Construction Association (MCA) industry-wide Environmental Product Declaration (EPD) for roll formed wall and roof cladding systems in aluminum and steel. ATAS products such as Isoleren Insulated Metal Panels (pg. 40), and InSpire solar air heating (pg. 39) also contribute to sustainable energy efficient buildings.

[www.atas.com/sustainability](http://www.atas.com/sustainability)

## SOLAR READY ROOF SYSTEMS

ATAS offers a variety of solar ready metal roofing systems. Metal is the ideal choice for both crystalline and BIPV (building integrated photovoltaic) solar systems because of its long service life. When installing a crystalline system (typically warranted for 25 years of power generation), a building owner benefits from a roofing substrate that has a greater life expectancy than the solar panels. Standing seam metal panels also provide a natural platform for attaching crystalline systems without any roof penetrations. Additionally, highly reflective roofs with cooler rooftop temperatures result in better performance of solar panels.

[www.atas.com/solar](http://www.atas.com/solar)

## ENERGY EFFICIENT PAINT COATINGS AND COOL ROOFING

Our cool pigment paints reflect infrared radiation, allowing colors to resist chalking and fading, while maintaining cooler surface temperatures.

These coatings meet national energy standards and guidelines. Many ATAS roofing products comply with stringent California Title 24 Building Energy Efficiency Standards. Numerous LEED® credits can be acquired depending on the roof's solar reflectance index and solar-ready capabilities.

[www.atas.com/coolroofing](http://www.atas.com/coolroofing)

## ABOVE SHEATHING VENTILATION

Above Sheathing Ventilation, or ASV, is an air space between a roofing panel and the deck. For years, ATAS has manufactured panels that can incorporate ASV technology in profiles such as Dutch Seam, Field-Lok, and Techo Tile. The combination of product design and installation method creates a natural air space. ASV can be implemented in retrofits when metal roofing is installed over the previous roof system. Additionally, new commercial and residential roofing projects can include ASV by specifying an appropriate air gap.

ATAS offers a new, patented, ASV Spacer Shim. ASV creates energy savings by reducing air-conditioning costs in the summer and adding insulation value during the winter as proven by testing performance sponsored by the Metal Construction Association (MCA) at Oak Ridge National Laboratory. ASV also minimizes the effect of condensation between the roof layers. ASV Spacer Shims are designed to be stackable, providing ventilation spaces in increments of  $\frac{3}{8}$ ", and can also be used in wall and roof panel applications.

[www.atas.com/asv](http://www.atas.com/asv)

## INSPIRE

InSpire® Solar Air and Heating System is not just a wall panel, this is a solar collector and fresh air heating system (pg. 39).

[www.inspirewall.com](http://www.inspirewall.com)



DUTCH SEAM  
(Solar Panels Supplied by Others)  
Slate Grey  
Private Residence



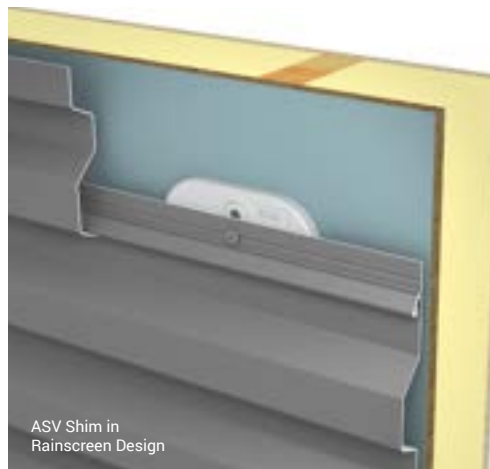
2" FIELD-LOK (Solar Panels Supplied by Others)  
Champagne  
Saint Vincent College



1" FIELD-LOK  
Slate Grey  
Private Residence



2" FIELD-LOK  
Champagne  
UCLA Botanical Center



ASV Shim in  
Rainscreen Design



Above Sheathing  
Ventilation (roof)



Above Sheathing  
Ventilation  
Erving Library (roof)



## COLOR SELECTION

### OVERVIEW

A leading manufacturer of sustainable building envelope technology, ATAS utilizes cool pigment paint on many color offerings. Our products reflect infrared radiation, which results in cooler surface temperatures, and maximum fade resistance.

Many of the ATAS products meet the qualifications for potential green building certification credits and industry ratings. See ATAS website for specific SRI values ([www.atas.com/sri](http://www.atas.com/sri)). Information on ATAS' sustainable products can be found at [www.atas.com/sustainability](http://www.atas.com/sustainability).

70% PVDF finish carries a limited warranty against fading and chalking. ATAS coated materials are non-staining and virtually maintenance free. Any surface residue is easily removed with conventional cleaning solutions or detergents.

### STOCK COLORS

70% PVDF resin based coatings provide high-performance durability for exterior and interior applications. These coatings are designed to resist fading, chalking, and abrasion. Meets the requirement of AAMA 2605-13 for aluminum substrates. Our stock colors have a 25-30 degree gloss level.

### MATTE FINISH

Designed to simulate natural metal hues in a high-performance 70% PVDF paint system. Our matte finish colors have a 5-10 degree gloss level.

### PREMIUM FINISH

70% PVDF resin based coatings, with premium pigmentation to obtain metallic or deep color for desired aesthetics.

### NATURAL METALS

Natural metals will weather and patina naturally over time, adding character and aesthetic appeal to any building design. In addition to natural metals, ATAS offers 55% Al-Zn alloy coated steel with acrylic coating and anodized aluminum as standard available materials.

### WOODLAND SERIES

Add the warmth of wood with the durability of metal to your next project. ATAS offers four classic woodgrain patterns with a 70% PVDF coating. The Woodland Series is available in .032 aluminum.

### OXIDE SERIES

Made to look like weathered steel with a rust-like appearance, these color choices add a timeless appearance with a 70% PVDF finish to your project.

### AVAILABILITY

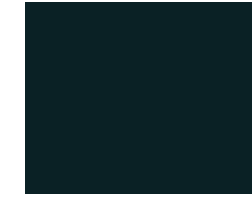
All stock & premium colors are available in 24 ga. steel, .032 aluminum, and .040 aluminum. All matte colors are available in 24 ga. steel, .032 aluminum, and .040 aluminum. Limited stock color selection available in .050 aluminum, .063 aluminum, and 22 ga. steel. Please inquire for additional materials and custom colors. For additional color offerings, visit [www.atas.com/colors](http://www.atas.com/colors). For current SRI values and agency listings refer to our Color and Reference Guide: [www.atas.com/sri](http://www.atas.com/sri)

[www.atas.com/colors](http://www.atas.com/colors)

## STOCK COLORS



Black (02)



Classic Bronze (01)



Medium Bronze (03)



Hartford Green (27)



Forest Green (11)



Teal (19)



Hemlock Green (30)



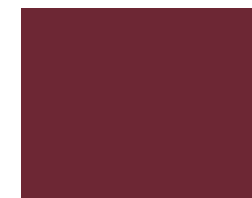
Patina Green (12)



Chocolate Brown (04)



Boysenberry (25)



Redwood (07)



Mission Red (08)



Sierra Tan (09)



Rawhide (15)



Concord Cream (05)



Sandstone (06)



Regal Blue (18)



Slate Blue (21)



Siam Blue (14)



Rocky Grey (16)



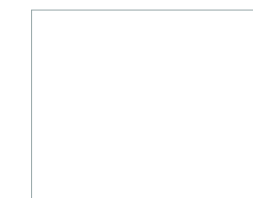
Charcoal Grey (62)



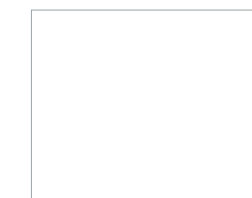
Slate Grey (20)



Dove Grey (13)



Ascot White (10)



Bone White (26)

## MATTE FINISH



Matte Black (32)



Char Brown (29)



Thunder Grey (34)



Anchor Grey (37)

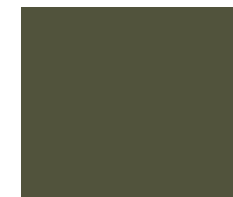


Ash Grey (33)



Almond (36)

## PREMIUM FINISH



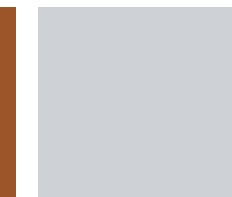
Antique Patina (24)



Champagne (31)



Coppertone (23)



Titanium (35)



Silversmith (28)



Brite Red (17)



## NATURAL METALS



Grey Zinc (50)\*



Dark Zinc (51)\*



Brown Zinc (89)\*



Blue Zinc (94)\*



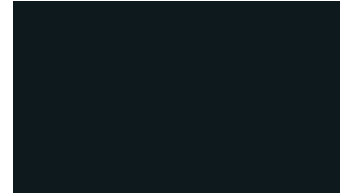
Red Zinc (95)\*



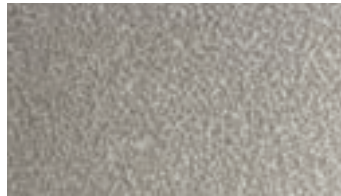
Green Zinc (96)\*



Clear Satin Anodized (70)



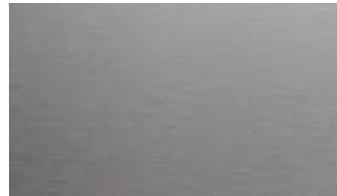
Dark Bronze Anodized (71)



55% Al-Zn Alloy Coated Steel with Acrylic Coating (97)



Copper (49)\*



Classic Stainless Steel (40)\*



Tin Matte Stainless Steel (41)\*

## WOODLAND SERIES\*



Birch (57)



Cedar (54)



Driftwood (53)

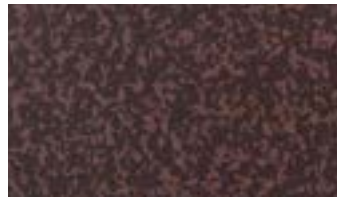


Walnut (55)

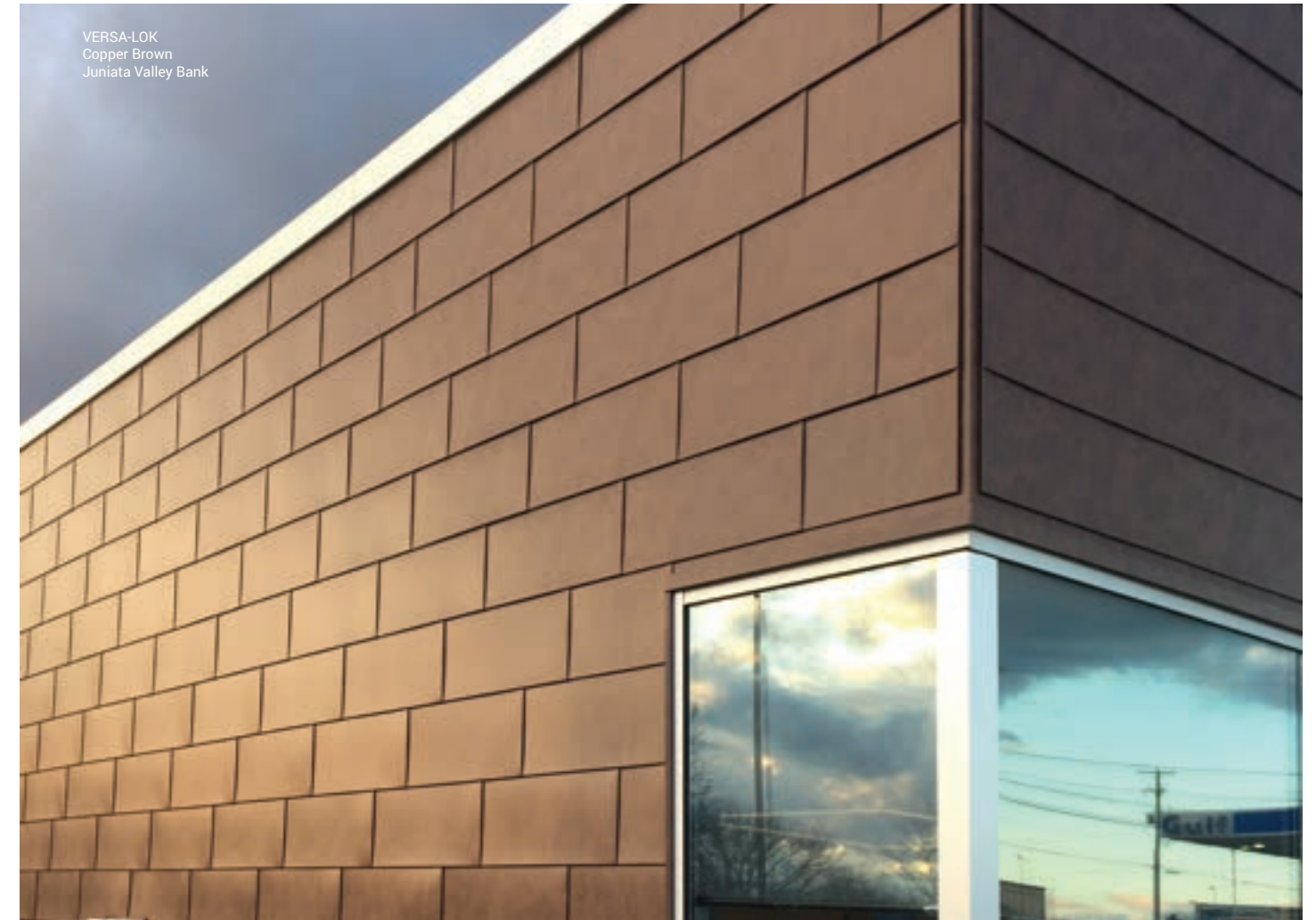
## OXIDE SERIES\*



Copper Brown (42)



Tarnished Red (47)



VERSA-LOK  
Copper Brown  
Juniata Valley Bank



MULTI-PURPOSE PANEL  
Custom Colors  
West-MEC Southwest Campus

\*Special material. Pricing and availability dependent upon project specifics. Color chips available upon request.



ATAS International, Inc.  
Allentown, PA | Mesa, AZ | Uni-  
versity Park, IL  
www.atas.com  
800.468.1441

\*Subject to minimum quantities and extended lead time. Inquire for material and panel width availability. Advanta Shingle®, CastleTop®, Colonial Seam®, Dutch Seam®, InSpire®, Isoleren®, Techo Tile® and Wind-Lok® are registered trademarks of ATAS International, Inc. Colors are as close to the actual colors as modern printing allows. Exact color chips on request; this is a requirement for all premium colors. If you have requirements or preference for colors or finishes other than shown, contact ATAS. Color availability varies by material, gauge and profile. ATAS is not responsible for colors selected from color chart. ATAS reserves the right to modify, eliminate and/or change its products without prior notification. Contact ATAS for more information. Every project is different. To the full extent permissible by law, ATAS disclaims all warranties, express or implied, including, but not limited to, implied warranties of merchantability and fitness for a particular purpose. A qualified engineer, architect or contractor should review suitability of use. Please visit [www.atas.com](http://www.atas.com) for the most up-to-date information.  
© 2023 ATAS International, Inc. LRD0123 LAT120

