



8100 SERIES



Window & Door
TOP 100 MANUFACTURERS



CLIMATE SOLUTIONS - 8100 SERIES

DOUBLE HUNG WINDOWS

THE 8100 SERIES DOUBLE HUNG WINDOW OPTIMIZED FOR BEST PERFORMANCE

Beautifully transform your home with our newest, state of the art double hung window, the 8100 series. You can expect the latest technology and the highest quality materials to provide you with the best energy efficiency rating. Our wide variety of energy efficient glass options, colors, hardware colors, grids, blinds between the glass and all items involving the aesthetics and functionality of the products, allow you to choose the combination that best suits your project.

FEATURES

- **CS Ultra Spacer:** High performance sealed glass system with warm edge technology for increased energy efficiency, reduced condensation and improved sound resistance.
- **Security:** The 8100 series come standard with a heavy duty cam action locking system for superior security.
- **Superior strength:** Precise temperature controlled 4 corner fusion welded frame and sash construction exceeds structural testing requirements in residential applications. Multi-chambered frame offers bridge like industrial strength along with optimal thermal performance.
- **Patented 3 Barrier sash and sill weather stripping system** made to resist air and water infiltration in the harshest weather conditions.
- **Our rugged patented interlocking 1/2" coil Constant force stainless steel balance system** passes commercial grade performance testing, able to hold up to 80lbs.
- **Double hung windows** come standard with extruded 1/2 screens. Upgrade to FlexScreen, the world's first and only flexible window screen. made from phosphate enhanced spring steel coated with an exterior grade,



Low Profile Sloped Sill

To assist with water drainage while staying cleaner. Interlocking dam to prevent air and water infiltration. Multi-chamber i-beam design creates the strongest sloped sill on the market.



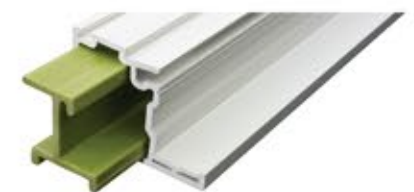
Easy to clean Tilt In

Dual sash feature to access both sashes from the inside of your home for easy cleaning and care.



High Performance Bio Foam Option

Environmentally friendly USDA certified soy based bio foam option for increased thermal performance increasing energy efficiency.



Thermal Reinforcement Option

High-Performing renewable bio-based window reinforcement system is the next generation of thermal reinforcement up to 700 times better than aluminum



CLIMATE SOLUTIONS - 8100 SERIES SLIDING WINDOWS

THE 8100 SERIES SLIDING WINDOW BUILT WITH MODERN SOPHISTICATION



Sliding windows operate with sashes moving right and left providing unobstructed views and plenty of ventilation. Our wide variety of energy efficient glass options, colors, hardware colors, grids, and all items involving the aesthetics and functionality of the products, allow you to choose the combination that best suits your project.

FEATURES

- Superior water drainage: Slider windows utilize a multi-chamber water weep system providing superior water drainage.
- CS Ultra Spacer: High performance sealed glass system with warm edge technology for increased energy efficiency, reduced condensation and improved sound resistance.
- Security: Slider windows come standard with a heavy duty cam action locking system for superior security.
- Superior strength: Precise temperature controlled 4 corner fusion welded frame and sash construction exceeds structural testing requirements in residential applications. Multi-chambered frame offers bridge like industrial strength along with optimal thermal performance.



Easy Lift Out Sash

Allows easy access for maintenance and cleaning from inside the comfort of your home. Anti break-in system provides peace of mind and stops intruders from lifting the sash out when locked.



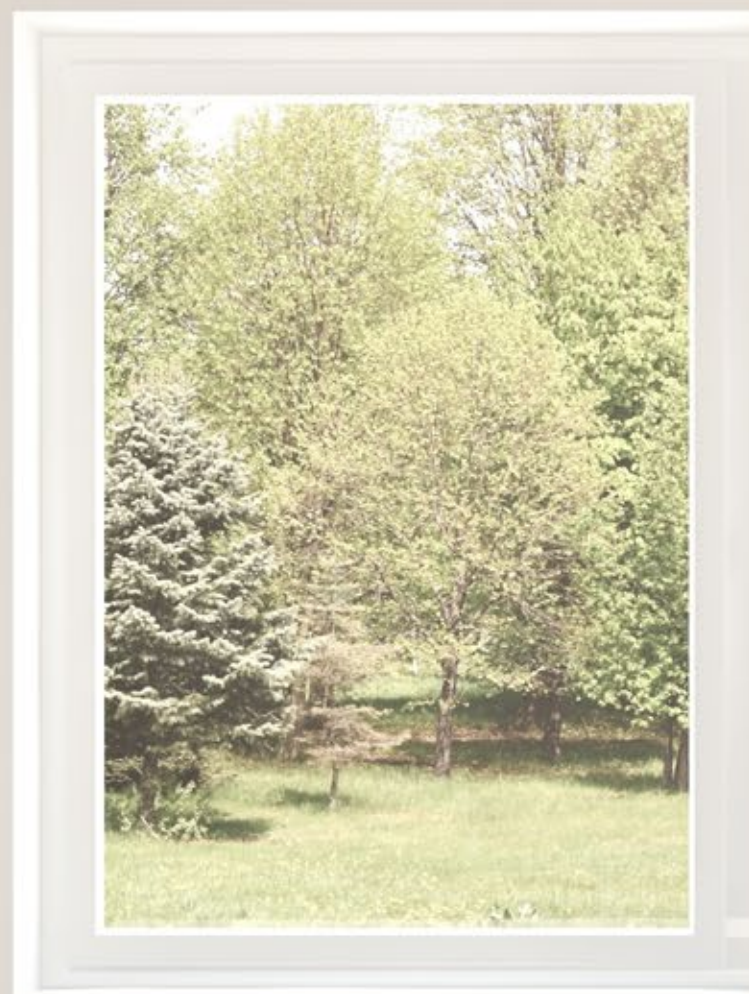
Self Lubricating Brass Rollers

Made in USA rust resistant brass rollers allow your window to slide effortlessly.



Thermal Reinforcement Option

Environmentally friendly USDA certified soy based bio foam option for increased thermal performance increasing energy efficiency.



CLIMATE SOLUTIONS - 8100 SERIES

PICTURE & SHAPE WINDOWS

PICTURE AND ARCHITECTURAL SHAPE WINDOWS CREATE THE PERFECT VIEW



PICTURE WINDOWS

Picture windows, also known as fixed windows are stationary, with fixed panes. They are non-operable windows, which means they can't be opened. Picture windows maximize the amount of natural light that enters your space. This type of window is easy to customize with decorative grids and finishes. One of their most popular features is that they allow for breath-taking unobstructed views. You can expect the latest technology and the highest quality materials to provide you with the best energy efficiency rating.

ARCHITECTURAL SHAPES

Architectural shape windows are available in a variety of geometric shapes, from full and half-circles to the most extravagant shapes such as octagons, hexagons, and more. This type of window allows you to be creative and unique. Due to our high-quality materials and modern technology, architectural windows are as energy-efficient as our other popular and modern window styles.



CLIMATE SOLUTIONS

CASEMENT WINDOWS

CASEMENT WINDOWS EASILY CRANK OPEN FOR MAXIMUM VENTILATION

Casement windows are hinged on either side and the sash swings out for maximum ventilation and unobstructed views. Casement windows can be combined in multiple configurations from twin section units and up. Our wide variety of energy efficient glass options, colors, hardware colors, grids, blinds between the glass and all items involving the aesthetics and functionality of the products, allow you to choose the combination that best suits your project.

FEATURES

- **Dual scissor operating hinge:** Engineered for high performance and long term durability in window sizes up to 76 inches tall and 38 inches wide.
- **Gasket seal:** Provides superior weather protection as outside air pressure pushes sashes in tighter to the frame.
- **CS Ultra Spacer:** High performance sealed glass system with warm edge technology for increased energy efficiency, reduced condensation and improved sound resistance.
- **Spring action screen:** Our casement screens are easy to remove when needed. This spring action allows us to eliminate unsightly screen clips.
- **Superior strength:** Precise temperature controlled 4 corner fusion welded frame and sash construction exceeds structural testing requirements in residential applications. Multi-chambered frame offers bridge like industrial strength along with optimal thermal performance.
- Casement windows are versatile allowing countless multi-stacking combinations using awning and picture windows.
- **Egress escape hinges:** Optional egress hardware allows the window to open wider than normal for building code egress requirements.



Easy to Clean

Window opens at a 90° angle allowing easy cleaning from the inside of your home.



Sleek Fold Away Operating Handle

Function smoothly and fold away easily for minimal visibility.



Multi-point Locking Hardware System

Provides superior security while giving the window a tight compression seal making casement windows some of the most energy efficient windows on the market.



High Performance Bio Foam Option

Environmentally friendly USDA certified soy based bio foam option for increased thermal performance increasing energy efficiency.

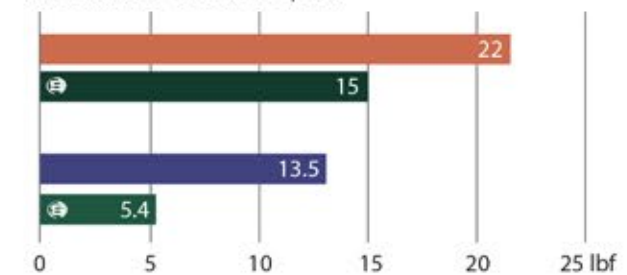


FEATURES

- Outstanding reliability: Engineered to perform at all sizes. This door provides reliability that will stand the test of time, and is practically watertight.
- Multichamber design reduces thermal exchange and, with more enclosed air space than other brands, increases insulation values without the addition of costly, low recyclable insulating material.
- Steel reinforced for superior strength and long term durability.

OPERATING FORCE TEST

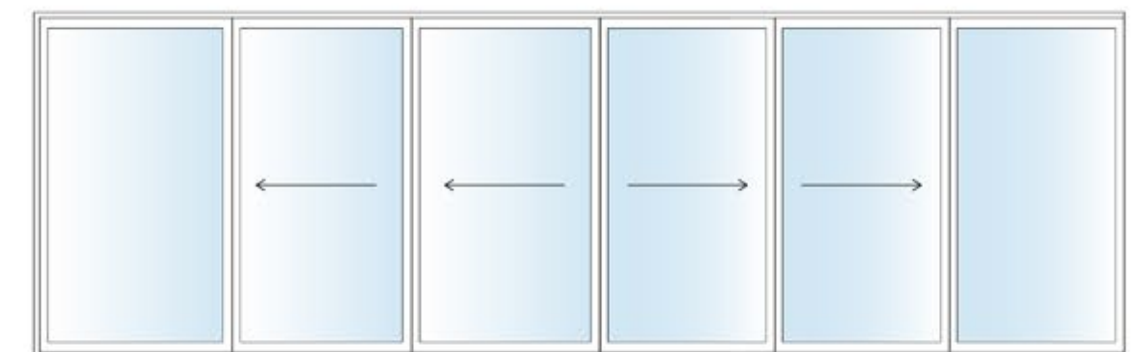
lower numbers = less force to operate



- Pound-force needed to initiate motion - Strictest industry standards
- Pound-force needed to initiate motion - Climate Solutions 9000 Series
- Pound-force needed to keep in motion - Strictest industry standards
- Pound-force needed to keep in motion - Climate Solutions 9000 Series

CONFIGURATIONS

Patio doors are available in 2-panel 3-panel 4-panel & 6-panel configurations, with a wide range of energy efficient glass options and decorative features. Sizes up to 23 feet.



Multipoint Locking System
provides optimum resistance and security against forced entry.



Foot Lock with Venting Position
Sleek foot activated lock provides added security and a convenient way to allow ventilation while still at home.



Increased Security
Fixed and mobile panel rails meet and interlock perfectly, making removal from outside almost impossible. Lower sill design provides safer entry and exit.



Smooth and Quiet
Our doors slide open smoothly and quietly thanks to the Patented dual-tandem nylon wheels and raised rail to protect the wheels from dirt and debris.

CLIMATE SOLUTIONS

PATIO DOORS

BUILT TO WORK, BUILT TO LAST

High Performance Glass

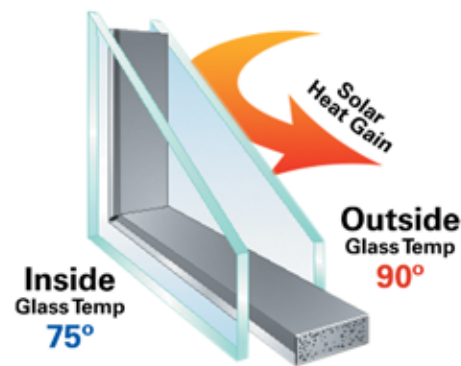
Climate Solutions glass packages deliver the ideal energy balance of solar heat control, high visibility and fade protection. With gas filled chambers and Low-E coatings, our 8100 series windows provide high levels of climate protection year-round with optimal comfort and energy savings. Plus, they reduce your environmental impact by reducing energy consumption.

Glass	Bio Foam Injected	Stacked Layers	Gas Filler	U Factor	SHGC	Visible Transmittance	Condensation Resistance	Energy Star
ClimaPlus ²	No	8	Argon	0.28	0.28	0.53	60	No
ClimaPlus ³	No	12	Argon	0.27	0.21	0.49	60	Yes
ClimaPlus ^{3X}	Yes	12	Argon	0.26	0.21	0.49	60	Exceeds
ClimaShield ¹³	No	14	Argon	0.24	0.20	0.48	49	Exceeds
ClimaShield ^{13X}	Yes	14	Argon	0.22	0.20	0.48	49	Exceeds

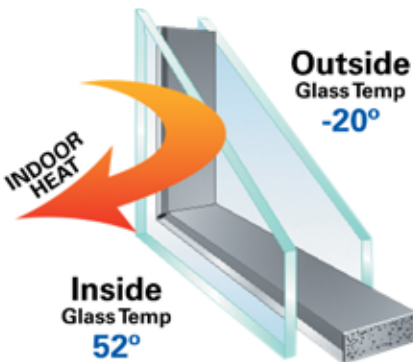
R5 package available to achieve maximum fenestration results

When the temperature soars, ordinary window glass just can't handle the heat. And tinted glass spoils the view. ClimaPlus, however, has been specially formulated to reject the sun's heat without affecting the view. It lets more light in and keeps more heat out. So your home stays cool and comfortable.

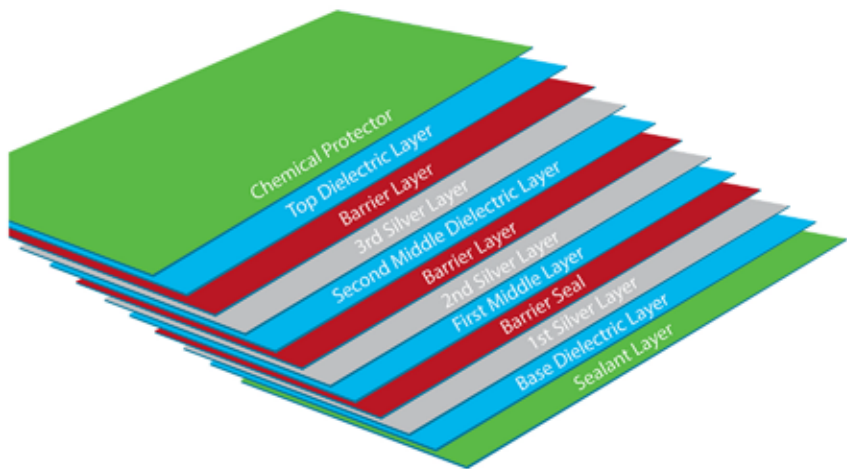
STOP HEAT FROM ENTERING YOUR HOME



STOP HEAT FROM ESCAPING YOUR HOME



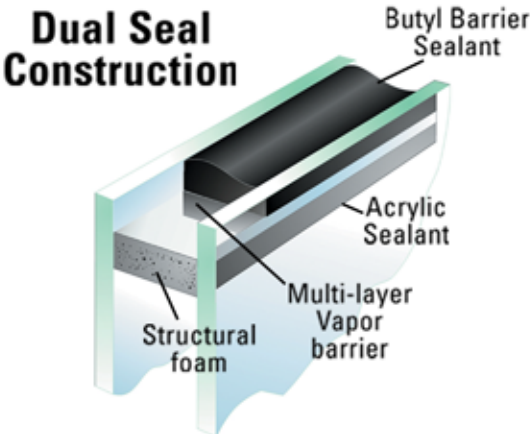
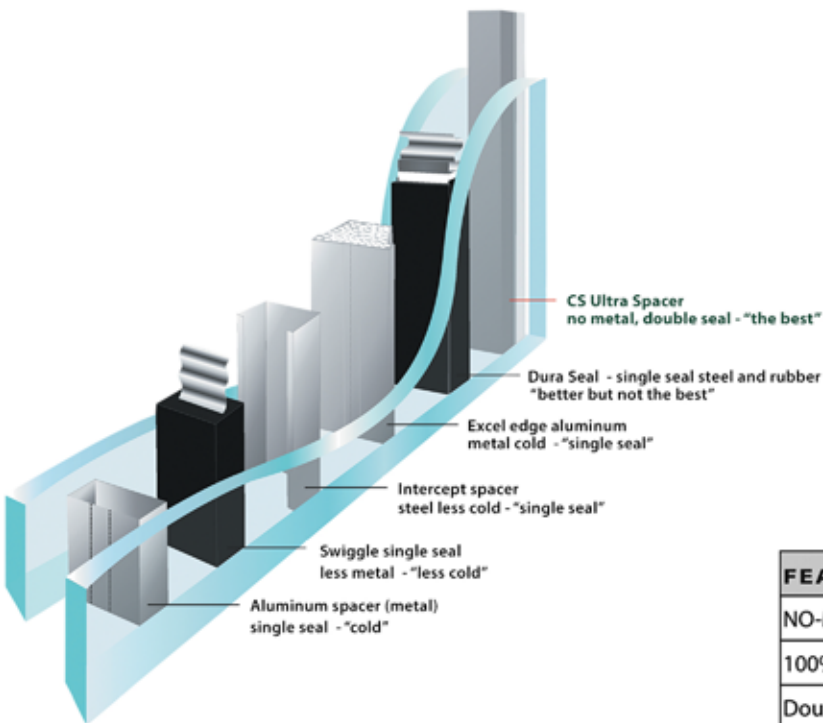
12 Layer Coated ClimaPlus³ Glass



- The Ultimate Performance Glass
- Specially formulated to reject the sun's heat
- Allows more light in to your home
- Blocks 95% of damaging UV rays
- Stops your furniture, carpets, and curtains from fading

CS Ultra Spacer

Choosing the right spacer system can make all the difference. Every window is comprised of two (and sometimes three) panes of glass separated by a spacer that hold the panes together, creating an insulating air space where a safe gas such as argon or krypton can be added to protect the home from heat loss and outside elements.



FEATURE	BENEFIT
NO-Metal	Non-conductive
100% closed-cell polymer	TrueWARM® edge
Double seal	No seal failure
Exclusive adhesive	World's only structural spacer
Minimized condensation	Best resistance to mold

ClimaClean Glass Technology

It's not magic but close to it. Exterior window surfaces require constant maintenance, but not so with ClimaClean glass. ClimaClean uses the power of the sun to biodegrade dirt and organic materials. Water will rinse it away leaving your windows virtually spotless.



Our patented double-sputtering coating process permanently deposits silicon and titanium dioxide on the bottom of the glass during the same pass through the coater as our energy-efficient ClimaPlus coatings, reducing the amount of energy needed to coat both glass surfaces. This combination of ClimaClean and ClimaPlus keeps windows cleaner longer while providing energy savings to the homeowner.

Color Options

We offer a full spectrum of both standard and customizable color options to give you absolute freedom in choosing the tone that will complete your home project. Our exterior colors are of the highest quality, with durable, long-lasting color that is robust enough to withstand whatever the elements may bring.

Our premium color match program allows you to match the exterior of your window to any color you want.

Interior Colors



Exterior Colors



Exterior Custom Colors



Grid & Pattern Options

Decorative grids lend an added measure of style and dimension to your windows. Grids are enclosed within the insulated glass unit for easy cleaning. First choose a pattern and then choose a grid profile to achieve your ideal finished look.

Contour Grid - Available in Colonial, Diamond, Prairie and Double Prairie patterns.

Flat Grid - Available in Colonial, Diamond, Prairie and Double Prairie patterns.

Pencil Grid - Available in Colonial, Diamond, Prairie and Double Prairie patterns.

Simulated Divided Lites - SDL's are grids that appear on the exterior surfaces of the glass.

GRID PATTERNS



GRID PROFILES



Hardware Options



Flex Screen (optional)



The World's First and Only Flexible Window Screen

Named "Most innovative window component" by Window & Door Magazine, the FlexScreen design features a PVC coated, high performance spring steel frame. The beauty of its design is its simplicity. Simply hold the screen in your hands...bend the sides in...and fit Flex-Screen into your screen track. The FlexScreen hides in the window screen pocket, drastically improving sight lines and eliminating the need for color matching.

Blinds Between the Glass

Blinds Between the Glass - feature easily accessible, ergonomically designed controls for easy operation. Fingertip control allows you to raise and lower blinds the entire length of the glass with only the slightest movement required and then tilt them a full 180° to direct and control light and privacy.



A Modern Alternative to Traditional Blinds





PEACE OF MIND
BACKED BY OUR WARRANTY!

Climate Solutions has provided the highest quality materials in windows and doors for over a decade. We manufacture all of our windows and doors out of our Franklin Park location, on the outskirts of Chicago. Our products are backed with a transferable lifetime warranty, one of the very best warranties in the industry. Learn more about us on our website at www.cswindows.com



10100 Pacific Ave, Franklin Park, IL 60131
www.cswindows.com