

**ANVIL LX**  
**LASER TECHNOLOGIES**



**FIBER LASER TOOLS**  
**CUTTING**  
**WELDING**  
**CLEANING**



Fall/Winter 2023 Catalog



As a teenager growing up in China I had a dream of becoming an engineer and working with iron and steel. With Anvil LX Laser Technologies I have realized the 21st Century version of that dream. The world of metal fabrication has been revolutionized by the development of Fiber Laser technology. At Anvil LX we are pleased to represent the leading edge of this innovation - David Hong

As a 15 year veteran of The Walt Disney Company I bring a keen sense of the customer service that makes Disney a world leader. As SVP Production at ABC Studios I spearheaded the effort to globalize Disney's TV production business. I am excited for this new opportunity with the Anvil LX Laser Technologies team to bring these amazing products to the USA and internationally - Gary French

# ANVIL LX

## LASER TECHNOLOGIES

Anvil LX Laser Technologies was established in 2004 at the height of the Fiber Laser revolution in cutting tool development. Over the course of 19 years in the market we have perfected our product development, machine production, equipment sales and after-sales service. Our combined professional experience allows us to adapt to changes in the technology market which, in turn, enables customers using our products to extract greater value and exert advantages over their competitors in the field. Our award-winning after-sales service team with customers throughout the USA and Europe provides a comprehensive link to our product designers and developers to further improve customer experience.

Driven by the growth of the US economy we have worked closely with our industrial partners and suppliers to expand our market-place and drive value to our customers, their businesses and the markets and societies they serve.

The Anvil LX Laser Technology team wishes all our partners, customers and suppliers continued success in their business.

Anvil LX - Laser Technologies, Inc.

*Carol*  
*David Lily*



I have always had a passion for logistics and supply chain management. Our entry in the Laser Cutting Equipment marketplace with Anvil LX is an exciting opportunity to focus my skills on our new customers and their needs. I look forward to leading our company to the next level and delivery quality, dependability and customer support to our clients - Suqing "Carol" Sun



Since 1999 I have worked in Industrial Equipment Sales. From product design to manufacturing, marking and installation, I have been an advocate for my clients, my product and my team. I believe in establishing effective communication from concept to after-sales service which has made me an award-winning leader in my field. I am excited to be part of the Anvil LX team and to represent our quality products - Jin "Lily" Lu



# Fiber Laser - Plate Cutting

Fall/Winter 2023

## LX3015

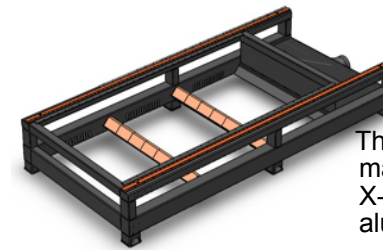
DH Series

DHT Series



The **Anvil LX DH Series** plate cutting machine represents state-of-the-art in Fiber Laser cutting technology. With available power from **1Kw to 6Kw** the DH series machines are suitable for small to medium sized manufacturing facilities.

The **Anvil LX DHT Series** combines plate and tube cutting capabilities into one compact machine. Perfect for smaller shops or where space is limited. One cutting head serves both plate and tube cutting operations.



The **DH Series** bed is constructed from welded 6mm material for excellent rigidity and support. The **DH Series** X-axis beam features aviation grade welded, heat treated aluminum for high precision and excellent rigidity.



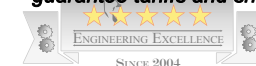
### Product Standard Features ~ Variants & Optional Configurations

Standard Working Size: 1500x3000mm (60x120 inches)	DHT Model tube working size: 6m x 220mm (20' x 8.8")
Italy Wkte/PEK Linear square rails	Optional: Hiwin Rails, YYC Gear
Inovance/Delta Servo Motors & Driver	Optional: Fuji Servo Motor, Yaskawa/Panasonic Servo Motor
German SDI BORG/J&T Taiwan Gears	
Italy Motovario/Desboer Reducer	
S&A Hanli Water Chiller	
Au3Tech Controller + Au3Tech Laserhead (1.0Kw Standard)	Bochu Controller options available (Standard on some models)
Fiber Laser Source: MAX (made in China)	Raytools, Boci Laserhead options available
Transformer: 20Kva @ 220V/3P - 330V/3P	1.5Kw to 30.0Kw options available
Nest Software & Training included	Warranty: 3 Years
Model LX4015DH	Working Size - 1500x4000mm (60x160 inches)
Model LX6015DH	Working Size - 1500x6000mm (60x240 inches)

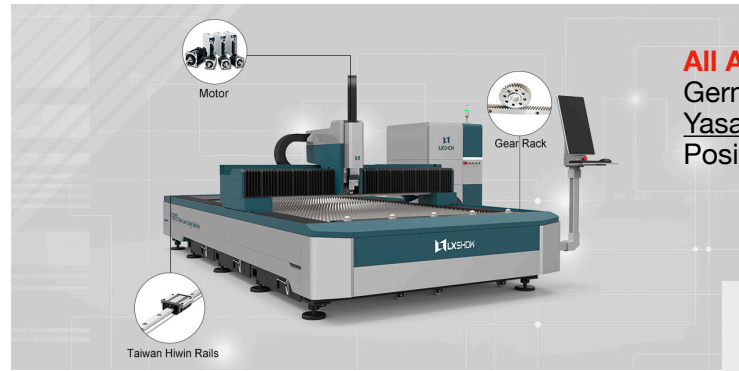
**ANVIL LX**  
LASER TECHNOLOGIES



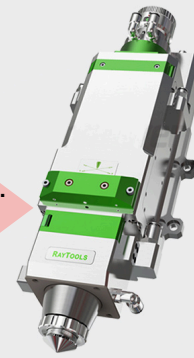
Specifications are accurate at time of publishing. Prices quoted in US dollars and include estimates for shipping and import tariffs FOB in Long Beach, California. Duties, local use/sales taxes (if applicable) and transportation to other destinations in the USA or elsewhere will be quoted upon request. We cannot guarantee tariffs and shipping costs as those are subject to change without notice. ANVIL LX will provide a firm price quote upon contract.



All **Anvil Lx Fiber Laser Machines** are available with German made **Atlanta Gear Rack Systems**, Japanese **Yasakawa Motors** and **Hiwin Rails** from Taiwan. Positioning accuracy of 0.02mm and cutting acceleration



All **LXShow** Fiber Laser Machines include an Intelligent **Auto Focus Cutting Head**. Software calibration: **10X faster** than manual operation. Cuts **25mm Carbon Steel in <3s @ 3000W** Collimating and focusing mirrors are **water cooled** to prolong service life.



### Safety & Environment

The full Protection Cover is the choice for manufacturers with smaller industrial workspaces. Featuring 220mm Ø extraction ducts and CE approved laser protection glass in the observation window for smoke/dust free work area with less noise



**Monitor Camera** included with enclosed units

### Dual Exchange Tables

Optional automatic exchange table allows rapid transfer (10s-15s) between finished work and raw materials greatly increases efficiency and productivity



### Bochu Control System

Easy to operate with intuitive command structure and GUI - Improves stock layout and material utilization by 20%. Supports all popular graphics files DXF, DWG, PLT, etc. Multiple user language options

### Control Cabinet

Electrical components and laser source are built-in to the Independent Control Cabinet with dust proof and climate control to prolong service life



# Fiber Laser - Plate Cutting

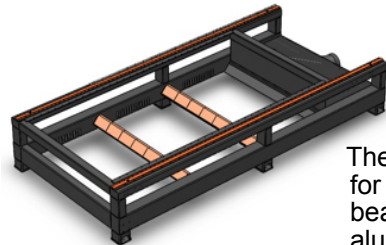
Fall/Winter 2023

## LX3015

### H Series

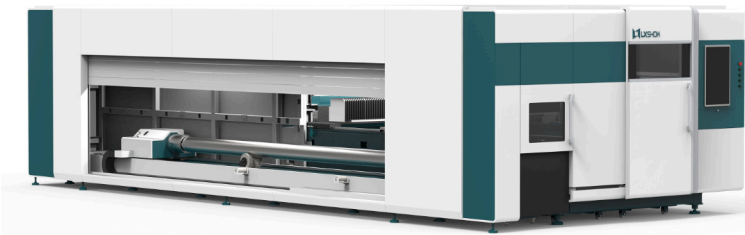


The **Anvil LX H Series** plate cutting machine further enhances the capability of the D Series with the addition of a full sound/dust attenuating enclosure. With available power from **1Kw to 6Kw** the H series machines are suitable for small to medium sized manufacturing facilities.

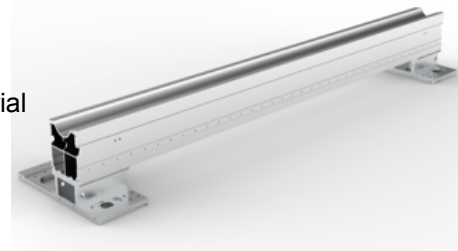


The **H Series** bed is constructed from welded 6mm material for excellent rigidity and support. The **H Series** X-axis beam features aviation grade welded, heat treated aluminum for high precision and excellent rigidity.

### HT Series



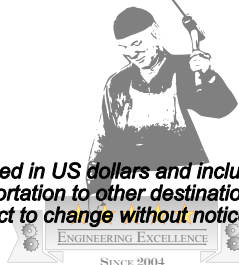
The **Anvil LX HT Series** combines plate and tube cutting capabilities into one compact machine. Perfect for smaller shops or with limited space and the need to reduce noise and dust. One cutting head serves both plate and tube cutting operations.



### Product Standard Features ~ Variants & Optional Configurations

Standard Working Size: 1500x3000mm (60x120 inches)	HT Model tube working size: 6m x 220mm (20' x 8.8")
Italy Wkte/PEK Linear square rails	Optional: Hiwin Rails, YYC Gear
Inovance/Delta Servo Motors & Driver	Optional: Fuji Servo Motor, Yaskawa/Panasonic Servo Motor
German SDI BORG/J&T Taiwan Gears	
Italy Motovario/Desboer Reducer	
S&A Hanli Water Chiller	
Au3Tech Controller + Au3Tech Laserhead (1.0Kw Standard)	Bochu Controller options available (Standard on some models)
Fiber Laser Source: MAX (made in China)	Raytools, Boci Laserhead options available
Transformer: 20Kva @ 220V/3P - 330V/3P	1.5Kw to 6.0Kw options available
Nest Software & Training included	Warranty: 3 Years

**ANVIL LX**  
LASER TECHNOLOGIES



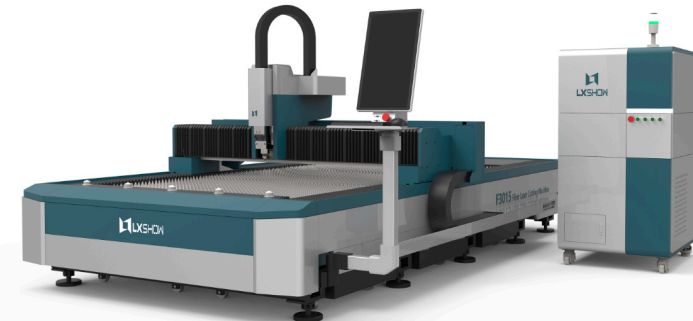
Specifications are accurate at time of publishing. Prices quoted in US dollars and include estimates for shipping and import tariffs FOB in Long Beach, California. Duties, local use/sales taxes (if applicable) and transportation to other destinations in the USA or elsewhere will be quoted upon request. We cannot guarantee tariffs and shipping costs as those are subject to change without notice. ANVIL LX will provide a firm price quote upon contract.

# Fiber Laser - Plate Cutting

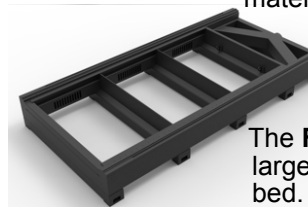
Fall/Winter 2023

## LX3015

### F Series



The **Anvil LX F Series** plate cutting machine is designed from the ground up to be the most advanced and capable in its class. With available power from **1Kw to 30Kw** every element in its construction is geared to heavy-duty material handling and cutting capability.



The **F Series** bed is designed with a lower center of gravity and large heat dissipation area to prevent thermal deformation of the bed. The **F Series** X-axis beam features aviation grade welded, heat treated aluminum for high precision and excellent rigidity.

### FT Series



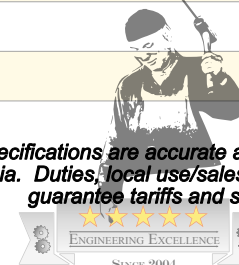
The **Anvil LX FT Series** combines plate and tube cutting capabilities into one compact machine. Perfect for smaller shops or where space is limited. One cutting head serves both plate and tube cutting operations.



### Product Standard Features ~ Variants & Optional Configurations

Standard Working Size: 1500x3000mm (60x120 inches)	Other table sizes available (see below)
Italy Wkte/PEK Linear square rails	Optional: Hiwin Rails, YYC Gear
Inovance/Delta Servo Motors & Driver	Optional: Fuji Servo Motor, Yaskawa/Panasonic Servo Motor
German SDI BORG/J&T Taiwan Gears	
Italy Motovario/Desboer Reducer	
S&A Hanli Water Chiller	
Au3Tech Controller + Au3Tech Laserhead (1.0Kw Standard)	Bochu Controller options available (standard on some models)
Fiber Laser Source: MAX (made in China)	Raytools, Boci Laserhead options available
Transformer: 20Kva @ 220V/3P - 330V/3P	1.5Kw to 30.0Kw options available
Nest Software & Training included	Warranty: 3 Years

**ANVIL LX**  
LASER TECHNOLOGIES



Specifications are accurate at time of publishing. Prices quoted in US dollars and include estimates for shipping and import tariffs FOB in Long Beach, California. Duties, local use/sales taxes (if applicable) and transportation to other destinations in the USA or elsewhere will be quoted upon request. We cannot guarantee tariffs and shipping costs as those are subject to change without notice. ANVIL LX will provide a firm price quote upon contract.

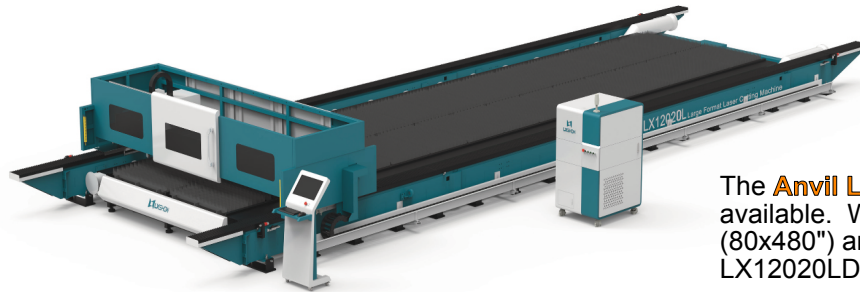


# Fiber Laser - Plate Cutting

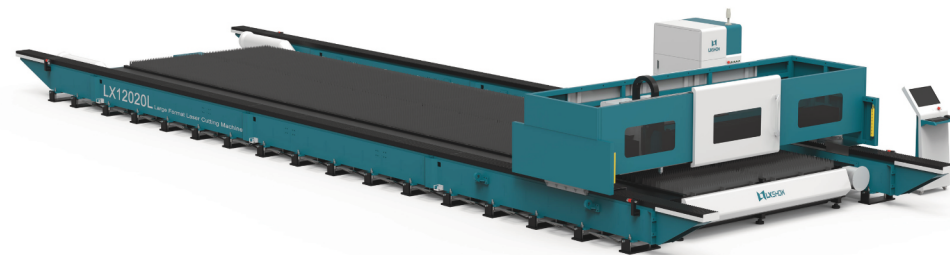
Fall/Winter 2023

## LX12020LD

LD Series



The **Anvil LX LD Series** plate cutting machine is our largest available. With a massive working area of 2000 x 12000mm (80x480") and available power options from 3Kw to 15Kw the LX12020LD will cut through 20mm carbon steel with ease.



### Product Standard Features ~ Variants & Optional Configurations

Standard Working Size: 2000x12000mm (80x480 inches)	Custom sizes upon request
Italy Wkte/PEK Linear square rails	Optional: Hiwin Rails, YYC Gear
Inovance/Delta Servo Motors & Driver	Optional: Fuji Servo Motor, Yaskawa/Panasonic Servo Motor
German SDI BORG/J&T Taiwan Gears	
Italy Motovario/Desboer Reducer	
S&A Hanli Water Chiller	
Bochu Fscut2000C Controller + Raytools BM110 Laser head	Bochu Fscut 4000C/8000C Controller options available
Fiber Laser Source: MAX (made in China) 3.0Kw standard	Boci BLT Laserhead options available
Transformer: 50Kva @ 220V/3P - 330V/3P	4.0Kw to 15.0Kw options available
Nest Software & Training included	Warranty: 3 Years



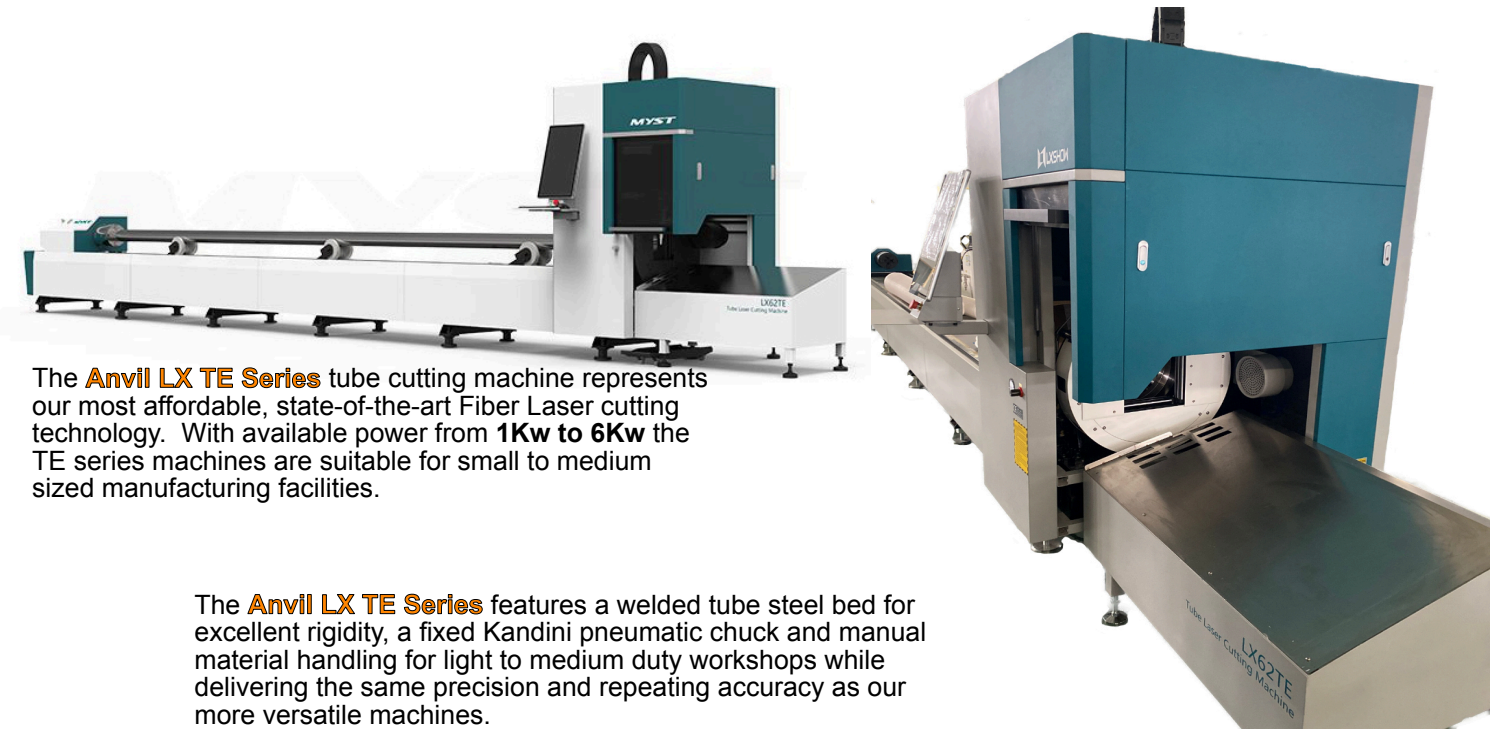
Specifications are accurate at time of publishing. Prices quoted in US dollars and include estimates for shipping and import tariffs FOB in Long Beach, California. Duties, local use/sales taxes (if applicable) and transportation to other destinations in the USA or elsewhere will be quoted upon request. We cannot guarantee tariffs and shipping costs as those are subject to change without notice. ANVIL LX will provide a firm price quote upon contract.

# Fiber Laser - Tube Cutting

Fall/Winter 2023

## LX62TE

TE Series

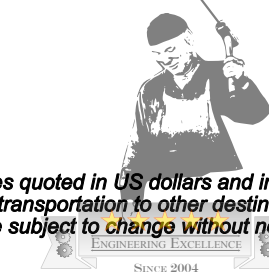


The **Anvil LX TE Series** tube cutting machine represents our most affordable, state-of-the-art Fiber Laser cutting technology. With available power from 1Kw to 6Kw the TE series machines are suitable for small to medium sized manufacturing facilities.

The **Anvil LX TE Series** features a welded tube steel bed for excellent rigidity, a fixed Kandini pneumatic chuck and manual material handling for light to medium duty workshops while delivering the same precision and repeating accuracy as our more versatile machines.

### Product Information Sheet

Standard working size: 6000mm (240 inches) stock length	Chuck capacity: 20-220mm ● or ■
Standard duty machine frame - 4000kg working load	Chuck working load - 200Kg
Italy Wkte/PEK linear square rails	German SDIBORG/J&T Taiwan Gears
Inovance/Delta Servo Motors	X=850w; Y=3000w; Z=750w; W1=1800w; W2=1300w
Controller	Au3Tech
DESBOER reducer	Water cooled: S&A/HanliTongei
Schneider Electrical components	Nest software
Au3Tech Controller MCC3723	Au3Tech A200MS laser head
Optional - Raytools Laserhead	Bochu 3000S controller



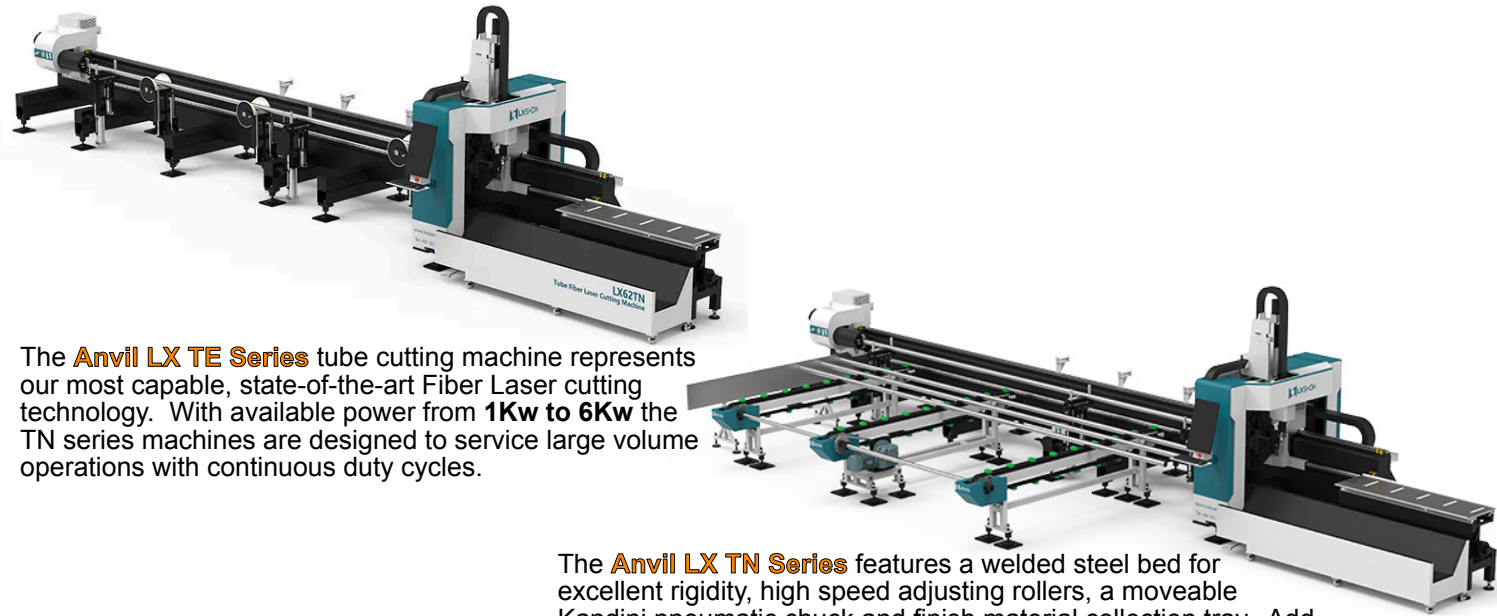
Specifications are accurate at time of publishing. Prices quoted in US dollars and include estimates for shipping and import tariffs FOB in Long Beach, California. Duties, local use/sales taxes (if applicable) and transportation to other destinations in the USA or elsewhere will be quoted upon request. We cannot guarantee tariffs and shipping costs as those are subject to change without notice. ANVIL LX will provide a firm price quote upon contract.

# Fiber Laser - Tube Cutting

Fall/Winter 2023

## LX62TN

TN Series



The **Anvil LX TE Series** tube cutting machine represents our most capable, state-of-the-art Fiber Laser cutting technology. With available power from **1Kw to 6Kw** the TN series machines are designed to service large volume operations with continuous duty cycles.

The **Anvil LX TN Series** features a welded steel bed for excellent rigidity, high speed adjusting rollers, a moveable Kandini pneumatic chuck and finish material collection tray. Add optional automatic material loading to make a fully hands-free high capacity operation. Custom working sizes available.

### Product Information Sheet

Standard working size: 6000mm (240 inches) stock length	Chuck capacity: 20-220mm ● or ■
Standard duty machine frame - 4000kg working load	Chuck working load - 200Kg
Italy Wkte/PEK linear square rails	German SDIBORG/J&T Taiwan Gears
Inovance/Delta Servo Motors	X=850w; Y=3000w; Z=750w; W1=1800w; W2=1300w
Controller	Au3Tech MCC3723
DESBOER reducer	Water cooled: S&A/HanliTongei
Schneider Electrical components	Nest software
Au3Tech Controller MCC3723	Au3Tech A200MS laser head
Optional - Raytools Laserhead	Bochu 3000S controller

**ANVIL LX**  
LASER TECHNOLOGIES



SINCE 2004

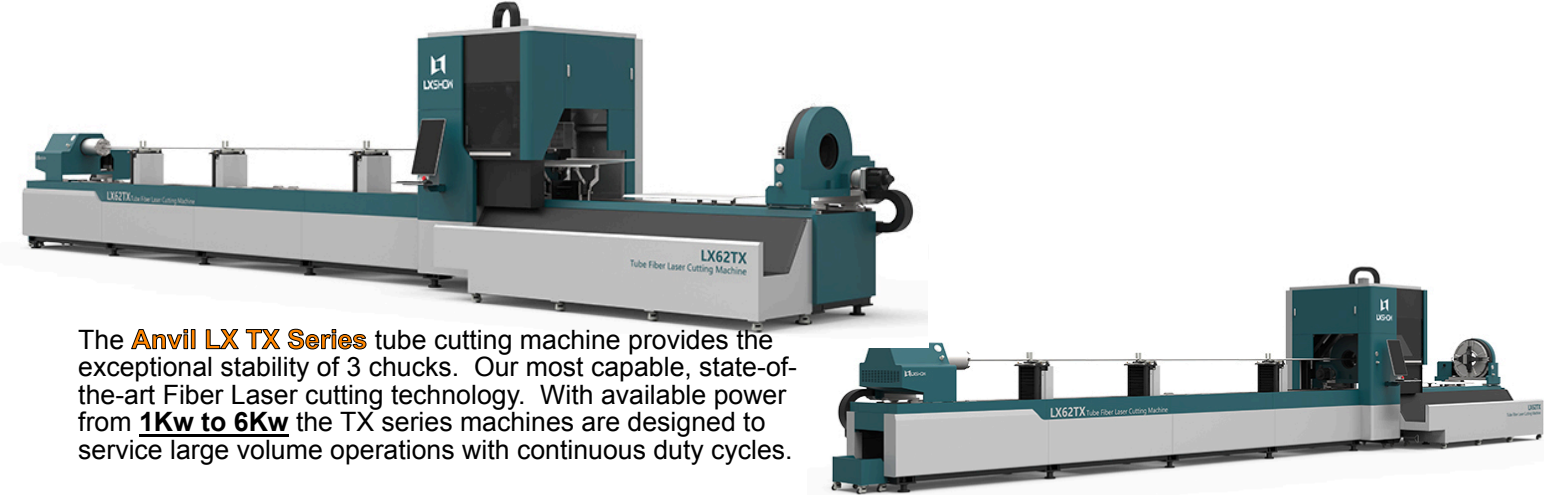
© 2023 Anvil LX, Inc. Anvil man™ Anvil LX, Inc.

# Fiber Laser - Tube Cutting

Fall/Winter 2023

## LX62TX

TX Series



The **Anvil LX TX Series** tube cutting machine provides the exceptional stability of 3 chucks. Our most capable, state-of-the-art Fiber Laser cutting technology. With available power from **1Kw to 6Kw** the TX series machines are designed to service large volume operations with continuous duty cycles.

The **Anvil LX TX Series** features a welded steel bed for excellent rigidity, high speed adjusting rollers, a fixed Kandini pneumatic chuck and finish material collection tray. TX and TN series machines can optionally accommodate up to **12m material length and tube stock up to 350mm**

### Product Information Sheet

Standard working size: 6000mm (240 inches) stock length	Chuck capacity: 20-220mm ● or ■
Standard duty machine frame - 4000kg working load	Chuck working load - 200Kg
Italy Wkte/PEK linear square rails	German SDIBORG/J&T Taiwan Gears
Inovance/Delta Servo Motors	X=850w; Y=3000w; Z=750w; W1=1800w; W2=1300w
Controller	Au3Tech MCC3723
DESBOER reducer	Water cooled: S&A/HanliTongei
Schneider Electrical components	Nest software
Au3Tech Controller MCC3723	Au3Tech A200MS laser head
Optional - Raytools Laserhead	Bochu 3000S controller

**ANVIL LX**  
LASER TECHNOLOGIES



SINCE 2004

© 2023 Anvil LX, Inc. Anvil man™ Anvil LX, Inc.

Specifications are accurate at time of publishing. Prices quoted in US dollars and include estimates for shipping and import tariffs FOB in Long Beach, California. Duties, local use/sales taxes (if applicable) and transportation to other destinations in the USA or elsewhere will be quoted upon request. We cannot guarantee tariffs and shipping costs as those are subject to change without notice. ANVIL LX will provide a firm price quote upon contract.



# Fiber Laser - Welding

ANVIL LX  
LASER TECHNOLOGIES



LX1.0LW



Laser Welding

## Product Information Sheet

Model: Laser Welding	LX1.0LW
Power (standard)	1.0Kw
Power Optional Models	1.5Kw, 2.0Kw, 3.0Kw
Laser Source	Max
Controller	Au3Tech
Laser Head	Au3Tech Laser weld head
Working Power	220v 50/60Hz 1P 3.0Kw=380v 50/60Hz 3P
Cooling System	Water cooled
Laser head cable length	3.0m/10'

<https://AnvilLX.com>

Specifications correct at time of publishing. Prices quoted are in US dollars and include estimates for shipping and import tariffs FOB in Long Beach, California. Duties, local use/sales taxes (if applicable) and transportation to other destinations in the USA or elsewhere will be quoted upon request. We cannot guarantee tariffs and shipping costs as those are subject to change without notice. ANVIL LX will provide a firm price quote upon contract.

# Fiber Laser - Cleaning

ANVIL LX  
LASER TECHNOLOGIES



LXC1.0CW



LXC50PW



Pulsed Wave

Continuous Wave

## Product Information Sheet

Model: Laser Cleaning	LXC1.0CW	LXC50PW
Power (standard)	1.0Kw	50w
Power Optional Models	1.5Kw, 2.0Kw, 3.0Kw	100w, 200w, 300w, 500w, 1.0Kw
Laser Source	Max	JPT
Controller	Au3Tech Laser	200/300w = Au3Tech 500w = Au3Tech 1.0Kw=Guoyuan Controller
Laser Head	Au3Tech	200/300w=HC500P-QCS 500w=HC500P-QHB 1.0Kw=Guoyuan Head
Working Power	220v 50/60Hz 1P 3.0Kw=380v 50/60Hz 3P	220v 50/60Hz 1P
Cooling System	Water cooled	Forced air cooled
Laser head cable length	3.0m/10'	3.0m/10'

<https://AnvilLX.com>

Specifications correct at time of publishing. Prices quoted are in US dollars and include estimates for shipping and import tariffs FOB in Long Beach, California. Duties, local use/sales taxes (if applicable) and transportation to other destinations in the USA or elsewhere will be quoted upon request. We cannot guarantee tariffs and shipping costs as those are subject to change without notice. ANVIL LX will provide a firm price quote upon contract.

# Fiber Laser - Cleaning

ANVIL LX  
LASER TECHNOLOGIES



LXC100RC



Rolling Case Laser

## Product Information Sheet

Model: Rolling Case Laser Cleaning	LXC100RC
Power	100W
Wavelength (nm)	1060-1085
Polarization	Random
Optical Isolator	Yes
Nominal Average output power (w)	≥100w
Single pulse energy (mj)	1.25@80kHz
Beam Quality	<1.6
Beam diameter (mm)	5.5-8
Pulse duration	250-290@80kHz
Working Voltage	24v ± 1
Power consumption (20°C) (w)	380w
Cooling	Forced air cooled
Machine size, weight	700x580x400mm, 47kg
Machine size, weight	28x23x16 inches, 103bs
Output cable length	3.0m - 10'

<https://AnvilLX.com>

Specifications correct at time of publishing. Prices quoted are in US dollars and include estimates for shipping and import tariffs FOB in Long Beach, California. Duties, local use/sales taxes (if applicable) and transportation to other destinations in the USA or elsewhere will be quoted upon request. We cannot guarantee tariffs and shipping costs as those are subject to change without notice. ANVIL LX will provide a firm price quote upon contract.

# Fiber Laser - Cleaning

ANVIL LX  
LASER TECHNOLOGIES



LXC50BP



Backpack Laser

## Product Information Sheet

Model: Backpack Laser Cleaning	LXC50BP	LXC100BP
Power	50W	100W
Wavelength (nm)	1060-1085	1060-1085
Polarization	Random	Random
Optical Isolator	Yes	Yes
Nominal Average output power (w)	≥50w	≥100w
Single pulse energy (mj)	1@50kHz	1.25@80kHz
Beam Quality	<1.6	<1.6
Beam diameter (mm)	6-8	5.5 - 8
Pulse duration	120-150@50kHz	250-290@80kHz
Working Voltage	24v ± 1	24v ± 1
Power consumption (20°C) (w)	340w	380w
Cooling	Forced air cooled	Forced air cooled
Machine size, weight	810x450x810mm, 40kg	810x450x810mm, 40kg
Machine size, weight	33x18x33 inches, 88lbs	33x28x33 inches, 88lbs
Output cable length	3.0m - 10'	3.0m - 10'

<https://AnvilLX.com>

Specifications correct at time of publishing. Prices quoted are in US dollars and include estimates for shipping and import tariffs FOB in Long Beach, California. Duties, local use/sales taxes (if applicable) and transportation to other destinations in the USA or elsewhere will be quoted upon request. We cannot guarantee tariffs and shipping costs as those are subject to change without notice. ANVIL LX will provide a firm price quote upon contract.





Special Edition:  
**Trade Show Catalog**  
Fall/Winter 2023

2659 Troy Avenue  
South El Monte CA 91733  
(213)300-7533  
<https://AnvilLX.com>

**westec**  
A Manufacturing Technology Series Event

Featuring  
**AeroDef**  
Manufacturing

**November 7-9, 2023**

Long Beach Convention Center | Long Beach, CA

[westeconline.com](http://westeconline.com)



MANUFACTURING  
TECHNOLOGY SERIES

produced by



& AMT

