

Fiber Laser - Plate Cutting

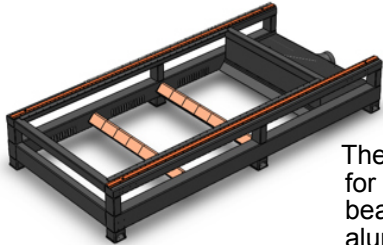
Fall/Winter 2023

LX3015

H Series

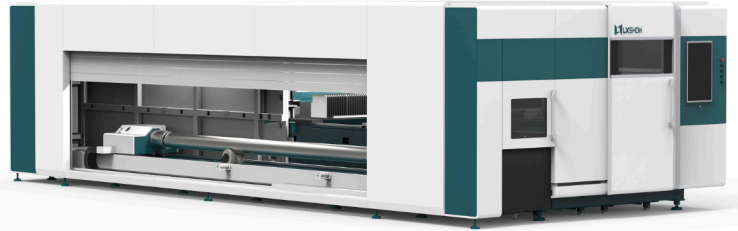


The **Anvil LX H Series** plate cutting machine further enhances the capability of the D Series with the addition of a full sound/dust attenuating enclosure. With available power from **1Kw to 6Kw** the H series machines are suitable for small to medium sized manufacturing facilities.

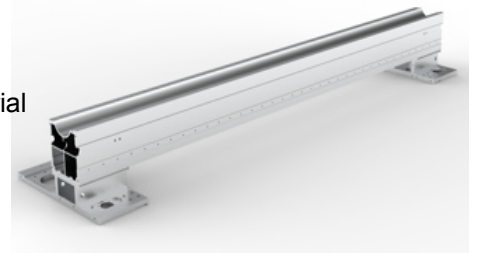


The **H Series** bed is constructed from welded 6mm material for excellent rigidity and support. The **H Series** X-axis beam features aviation grade welded, heat treated aluminum for high precision and excellent rigidity.

HT Series



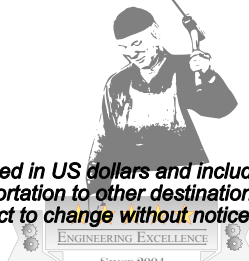
The **Anvil LX HT Series** combines plate and tube cutting capabilities into one compact machine. Perfect for smaller shops or with limited space and the need to reduce noise and dust. One cutting head serves both plate and tube cutting operations.



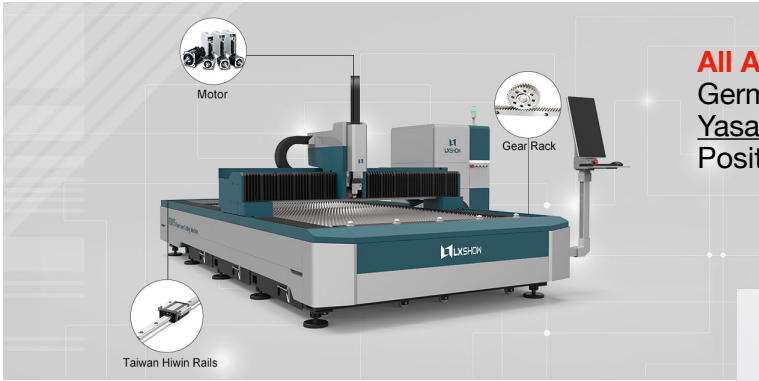
Product Standard Features ~ Variants & Optional Configurations

Standard Working Size: 1500x3000mm (60x120 inches)	HT Model tube working size: 6m x 220mm (20' x 8.8")
Italy Wkte/PEK Linear square rails	Optional: Hiwin Rails, YYC Gear
Inovance/Delta Servo Motors & Driver	Optional: Fuji Servo Motor, Yaskawa/Panasonic Servo Motor
German SDI BORG/J&T Taiwan Gears	
Italy Motovario/Desboer Reducer	
S&A Hanli Water Chiller	
Au3Tech Controller + Au3Tech Laserhead (1.0Kw Standard)	Bochu Controller options available (Standard on some models)
Fiber Laser Source: MAX (made in China)	Raytools, Boci Laserhead options available
Transformer: 20Kva @ 220V/3P - 330V/3P	1.5Kw to 6.0Kw options available
Nest Software & Training included	Warranty: 3 Years

ANVIL LX
LASER TECHNOLOGIES

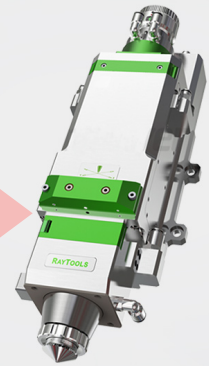


Specifications are accurate at time of publishing. Prices quoted in US dollars and include estimates for shipping and import tariffs FOB in Long Beach, California. Duties, local use/sales taxes (if applicable) and transportation to other destinations in the USA or elsewhere will be quoted upon request. We cannot guarantee tariffs and shipping costs as those are subject to change without notice. ANVIL LX will provide a firm price quote upon contract.



All **Anvil Lx Fiber Laser Machines** are available with German made Atlanta Gear Rack Systems, Japanese Yasakawa Motors and Hiwin Rails from Taiwan. Positioning accuracy of 0.02mm and cutting acceleration

All **LXShow** Fiber Laser Machines include an Intelligent **Auto Focus Cutting Head**. Software calibration: **10X faster** than manual operation. Cuts **25mm Carbon Steel in <3s @ 3000W** Collimating and focusing mirrors are **water cooled** to prolong service life.



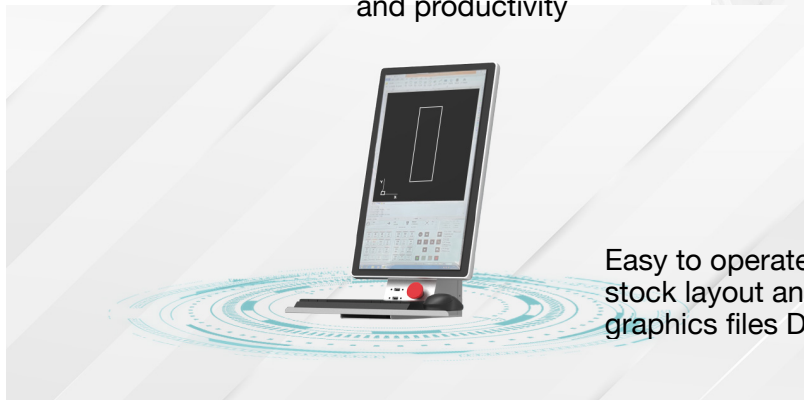
Safety & Environment

The full Protection Cover is the choice for manufacturers with smaller industrial workspaces. Featuring 220mm Ø extraction ducts and CE approved laser protection glass in the observation window for smoke/dust free work area with less noise

Monitor Camera included with enclosed units

Dual Exchange Tables

Optional automatic exchange table allows rapid transfer (10s-15s) between finished work and raw materials greatly increases efficiency and productivity



Bochu Control System

Easy to operate with intuitive command structure and GUI - Improves stock layout and material utilization by 20%. Supports all popular graphics files DXF, DWG, PLT, etc. Multiple user language options

Control Cabinet

Electrical components and laser source are built-in to the Independent Control Cabinet with dust proof and climate control to prolong service life





Confidential Price List

Configuration	Description	Models		
		LX3015DH	LX4015DH	LX6015DH
	Std. Config. Working size:	1500x 3000mm	1500x4000mm	1500x6000mm
	Heavy duty machine bed	60x120 Inches	60x160 Inches	60x240 inches
	Italy Wkte/PEK Linear square rails			
	German SDIBORD/ J&T Taiwan Gears			
	Inovance/Delta Servo Motors & driver			
	X:1300W Y:3000W Z:400W			
	Italy Motovario/Desboer Reducer			
	Water Chiller S&A/Hanli			
	Au3Tech Controller + Au3Tech A200MS Laser head (std)			
	Schneider Electrical Components			
	Transformer (220V/3 Phase to 380V/3 Phase) see below			
	Fiber Laser Source - MAX (made in China)			
Standard: 1.0Kw	Above configuration Inc'l. 20KVA Transformer	\$51,200	\$58,449	\$66,933
Optional: 1.5Kw	Above configuration + 30KVA Transformer	\$52,695	\$59,944	\$68,428
2.0Kw	Above Config. Sub.A230MS Laser head + 40KVA Txfrmer	\$62,549	\$69,798	\$78,282
3.0Kw	Sub. Weihong LS3000 Controller+Ospri LC40LS Laser	\$72,650	\$79,899	\$88,383
4.0Kw	Sub. Ospri LC80Plus Laser head, + 60KVA Txformer	\$91,279	\$98,528	\$107,012
6.0Kw	Above configuration + 80KVA Txformer	\$97,727	\$104,976	\$113,460



Pricing is provided to our customers for evaluation purposes only. Further dissemination or disclosure is prohibited without express permission.



Confidential Price List

Configuration	Description	Models		
		LX3015DHT	LX4015DHT	LX6015DHT
	Std. Config. Working size:	1500x 3000mm	1500x4000mm	1500x6000mm
	Heavy duty machine bed	60x120 Inches	60x160 Inches	60x240 inches
	Rotary Axis: Tube Cutting Working Size	3m/6m (120/240")	3m/6m (120/240")	3m/6m (120/240")
	Rotary Axis: Kandini pneumatic Chuck Size/Working load	20-220mm/4000Kg	20-220mm/4000Kg	20-220mm/4000Kg
		0.8-8.8"/8,800lbs	0.8-8.8"/8,800lbs	0.8-8.8"/8,800lbs
	Italy Wkte/PEK Linear square rails			
	German SDIBORD/ J&T Taiwan Gears			
	Inovance/Delta Servo Motors & driver			
	X:1300W Y:3000W Z:400W			
	Italy Motovario/Desboer Reducer			
	Water Chiller S&A/Hanli			
	Au3Tech Controller + Au3Tech A200MS Laser head (std)			
	Schneider Electrical Components			
	Transformer (220V/3 Phase to 380V/3 Phase) see below			
	Fiber Laser Source - MAX (made in China)			
Standard: 1.0Kw	Above configuration Inc'l. 20KVA Transformer	\$85,429	\$92,678	\$101,162
Optional: 1.5Kw	Above configuration + 30KVA Transformer	\$86,950	\$94,199	\$102,683
2.0Kw	Above Config. Sub.A230MS Laser head + 40KVA Txmfer	\$92,423	\$99,672	\$108,156
3.0Kw	Sub. Bochu Fscut3000S controller+Raytools BM100 Head	\$104,305	\$111,554	\$120,038
4.0Kw	Sub. Raytools BM06K head+ 60KVA Txformer	\$125,274	\$132,523	\$141,007
6.0Kw	Above configuration + 80KVA Txformer	\$127,627	\$134,876	\$143,360



Pricing is provided to our customers for evaluation purposes only. Further dissemination or disclosure is prohibited without express permission.