

## HOISTING AND STOWING

When it comes to hoisting and stowing of your mobility device, Mobility Engineering have a vast range of options to suit all vehicle types, so that you can continue to enjoy your lifestyle and remain independent. Generally, there are two types of hoists being either externally or internally mounted which will depend on the size and orientation of the device you will be lifting.

### INTERNAL HOISTS

An internal hoist is mounted inside of the vehicles boot area and provides you with weather protection for your mobility device and typically a crane type operation. If the boot of the vehicle is large enough for the mobility device to fit alongside the hoist, then this is the ideal option for transporting your mobility device.

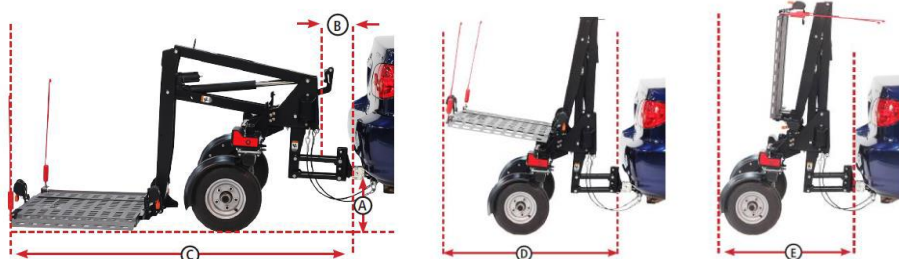
There are a wide range of internal hoists available to suit the various types and weights of the devices you will be lifting as well as matching your level of mobility.



# HOISTS, LIFTS & RAMPS

## EXTERNAL HOISTS

An external hoist is mounted to the hitch of the vehicle and offers you ample space and can cater to the larger mobility devices. There are also weather proof covers that can be added to ensure your mobility device stays dry while you are getting to your destination. Typically, the vehicle will require a square type hitch receiver for these hoists to work.



A	Hitch height range	41cm (approx.)
B	Bumper to chassis (minimum distance from the vehicle	17cm (approx.)
C	To end of platform (loading/unloading position on ground)	189cm (approx.)
D	To end of platform (travel position)	128cm (approx.)
E	To edge of fender (platform folded) with caster in trailing position	88cm (approx.)



Securing your mobility device is also quite easy as all you have to do is drive it onto the platform and let the up-down buttons do the rest of the work. Once your mobility device is on the platform in the raised position, you can then secure the device down using easy to use retractable ratchet straps.

There is also a crane type model that can be externally mounted and are suited for Utes and Trucks. They allow you to lift the mobility device from the Cab of the vehicle onto the vehicles tray.

## HYBRID HOIST

This is an internally mounted hoist with the functionality of an external platform style hoist. These are very easy to operate and the most convenient design for loading your mobility device in and out of the boot of the vehicle.



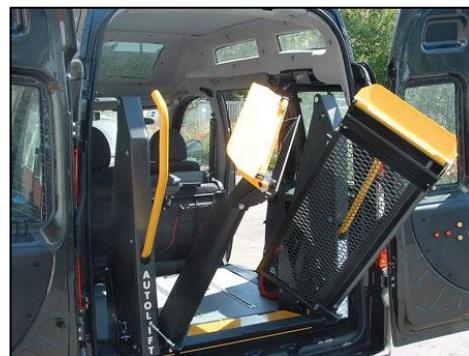


## WHEELCHAIR LIFTS

Wheelchair lifts are used to lift a wheelchair occupant in the wheelchair into the vehicle either using the rear or side door. Typically, these are installed into van type vehicles and come in various styles to suit your vehicle and lifestyle needs.

### TWIN PILLAR STEEL LIFTS

This is the most popular choice of lift and is installed usually in the rear of the vehicle for entry through the tailgate of the vehicle. There are 3 different platform styles depending on your needs being; Full platform, vertical split platform (walk-through) or horizontal folding platform.



### TWIN PILLAR ALUMINIUM LIFTS

This is the new generation of lifts that are constructed completely out of aluminium which heavily reduces the weight of the lift inside of the vehicle. This helps with the cargo weight distribution inside of the vehicle and comes in 2 different platform styles depending on your needs being. Full platform or horizontal folding platform.

### UNDERFLOOR CASSETTE LIFTS

This style of lift is suited for side or rear entry on the vehicle and can cater from vans all the way to buses and coaches. They are either semi or fully automatic platforms and come in various platform sizes to suit your needs.



## WHEELCHAIR RAMPS

Wheelchair ramps are a simple solution usually used for short term transport or while travelling. There are two types of ramps being either internally mounted quick-release ramps that can transport a wheelchair occupant in their wheelchair inside of the vehicle. The other ramp types are portable and used to transport your mobility device in and out of the boot of your vehicle.

### WHEELCHAIR IN-BOARD RAMPS

There are a variety of high quality lightweight Transport and Tailboard ramps available that are easy to use, making loading and un-loading safe and secure. The ramps are secured to the vehicle, using specially designed floor mounting plates so they can be mounted or removed in one quick step. They come in a range of 2 or 3 part ramps so you can find the right size to suit your vehicle and wheelchair.



### PORTABLE RAMPS

These are lightweight portable transportation and loading mobility ramps for wheelchairs and scooters that are user-friendly with lockable handles to make them easy to use. Coming in either telescopic, foldable or fixed versions to suit all of your transport need. They are aluminium, corrosion resistant ramps that come with a slip resistant surface, giving you safety and confidence wherever you travel.

