





FIRE DEPARTMENT NOTES

1. PROVIDE A PORTABLE FIRE EXTINGUISHER WITH A RATING OF NOT LESS THAN 2-A WITHIN 75 FOOT TRAVEL DISTANCE TO ALL PORTIONS OF THE BUILDING ON EACH FLOOR, AND ADDITIONAL EXTINGUISHERS AS REQUIRED BY FIRE DEPARTMENT FIELD INSPECTOR OR BUILDING DEPARTMENT INSPECTOR.
2. PROVIDE EXIT SIGN WITH 6" LETTERS OVER REQUIRED EXITS, WHERE SHOWN ON DRAWINGS, AND ADDITIONAL SIGNS AS REQUIRED BY BUILDING DEPARTMENT INSPECTOR OR FIRE DEPARTMENT FIELD INSPECTOR. CONNECT EXIT SIGNS TO EMERGENCY POWER CIRCUITS. COMPLY WITH BUILDING CODES.
3. PROVIDE EMERGENCY LIGHTING OF ONE FOOT-CANDLE AT FLOOR LEVEL. COMPLY WITH BUILDING CODES.
4. MAINTAIN AISLES AT LEAST 36" WIDE AT PUBLIC AREAS.
5. EVERY EXIT DOOR SHALL BE OPERABLE FROM THE INSIDE WITHOUT THE USE OF A KEY OR ANY SPECIAL KNOWLEDGE OR EFFORT. SPECIAL LOCKING DEVICES SHALL BE OF AN APPROVED TYPE. ALL NEW DOORS SHALL HAVE APPROVED LEVER HANDLES.
6. DOORS OPENING INTO REQUIRED 1-HOUR, FIRE-RESISTIVE CORRIDORS SHALL BE PROTECTED WITH A SMOKE OR DRAFT STOP ASSEMBLY HAVING A 20-MINUTE RATING AND SHALL BE SELF-CLOSING.
7. 20-MINUTE DOOR JAMBS TO BE TIGHT-FITTING, SMOKE AND DRAFT CONTROLLED.
8. EXIT DOORS SHALL SWING IN THE DIRECTION OF TRAVEL WHEN SERVING 50 OR MORE PERSONS AND IN ANY HAZARDOUS AREA.
9. INTERIOR WALL AND CEILING FINISHES FOR EXIT CORRIDOR SHALL NOT EXCEED AN END POINT FLAME SPREAD RATING:

A. CLASS I, FLAME SPREAD 0-25, SMOKE DENSITY 150, FOR MATERIALS INSTALLED IN VERTICAL EXITS.

B. CLASS II, FLAME SPREAD 26-75, SMOKE DENSITY 300, FOR MATERIALS INSTALLED IN HORIZONTAL EXITS.

C. CLASS III, FLAME SPREAD 76-200, SMOKE DENSITY 450, FOR MATERIALS INSTALLED IN ANY OTHER LOCATION.
10. DECORATIONS (CURTAINS, DRAPES, SHADES, HANGINGS, ETC.) SHALL BE NON-COMBUSTIBLE OR BE FLAMEPROOFED IN AN APPROVED MANNER.
11. PROVIDE FIRE DAMPERS OR DOORS WHERE AIR DUCTS PENETRATE FIRE-RATED WALLS OR CEILINGS.
12. STORAGE, DISPENSING OR USE OF ANY FLAMMABLE OR COMBUSTIBLE LIQUIDS, FLAMMABLE GAS AND HAZARDOUS SUBSTANCES SHALL COMPLY WITH APPLICABLE FIRE CODE REGULATIONS.
13. WOOD BLOCKING SHALL BE FIRE TREATED IN ACCORDANCE WITH APPLICABLE CODE REQUIREMENTS.
14. ALL FIRE AND SMOKE BARRIER SHALL HAVE STENCILING ABOVE THE CEILING THE FOLLOWING: "1 HOUR FIRE AND SMOKE BARRIER-PROTECT ALL OPENINGS. IDENTIFICATION SHALL BE SPACED NO MORE THAN 12' O.C. WITH MIN. LETTER SIZE OF 2" IN HEIGHT ON A CONTRASTING BACKGROUND.
15. PLANS SHALL BE APPROVED BY LOCAL PERMIT AUTHORITY AND FIRE MARSHAL PRIOR TO INSTALLATION.
16. CONTRACTOR SHALL PERMANENTLY IDENTIFY ALL FIRE RATED WALLS ( AND CORRESPONDING HOURLY RATING ) REQUIRED TO HAVE PROTECTED OPENINGS, CORRIDORS PARTITIONS, SMOKESTOP PARTITIONS, HORIZONTAL EXIT PARTITIONS, AND EXIT ENCLOSURES EITHER BY INSTALLING SIGNS OR BY STENCILING IN CONCEALED SPACES THE FOLLOWING: 1 HOUR FIRE AND SMOKE BARRIER – PROTECT ALL OPENINGS. IDENTIFICATION SHALL BE SPACED NO MORE THAN TWELVE ( 12 ) FEET ON CENTER WITH A MINIMUM LETTER SIZE OF TWO ( 2 ) INCHES IN HEIGHT ON A CONTRASTING BACKGROUND.
17. ALL INTERIOR FINISHES SHALL BE CLASS A OR CLASS B IN ACCORD WITH NFPA 101, SEC. 12.3.3.
18. ALL UPHOLSTERED FURNITURE SHALL HAVE A CLASS I FINISH PER NFPA 260 (NFPA 101, SEC. 12.7.4 AND SEC. 10.3.2.1).
19. NO COMBUSTIBLE FILMS, CLOTHS OR DRY VEGETAITION IS SPECIFIED IN THIS PROJECT (NFPA 701 AND NFPA 101, SEC 12.4.5.11.)

GENERAL NOTES

1. COMPLY WITH CODES, LAWS, ORDINANCES, RULES, AND REGULATIONS OF PUBLIC AUTHORITIES GOVERNING THE WORK.
2. OBTAIN AND PAY FOR PERMITS AND INSPECTIONS REQUIRED BY PUBLIC AUTHORITIES GOVERNING THE WORK.
3. REVIEW DOCUMENTS, VERIFY DIMENSIONS AND FIELD CONDITIONS AND CONFIRM THAT WORK IS BUILDABLE AS SHOWN. REPORT ANY CONFLICTS OR OMISSIONS TO THE ARCHITECT FOR CLARIFICATION PRIOR TO PERFORMING ANY WORK IN QUESTION.
4. SUBMIT REQUESTS FOR SUBSTITUTIONS, REVISIONS, OR CHANGES TO ARCHITECT FOR REVIEW PRIOR TO PURCHASE, FABRICATION OR INSTALLATION.
5. OWNER WILL PROVIDE WORK NOTED "BY OTHERS" OR "NIC" UNDER SEPARATE CONTRACT. INCLUDE SCHEDULE REQUIREMENTS IN CONSTRUCTION PROGRESS SCHEDULE AND COORDINATE TO ASSURE ORDERLY SEQUENCE OF INSTALLATION
6. COORDINATE TELECOMMUNICATIONS, DATA AND SECURITY SYSTEM INSTALLATIONS.
7. PROTECT AREA OF WORK AND ADJACENT AREAS FROM DAMAGE.
8. DO NOT SCALE DRAWINGS. WRITTEN DIMENSIONS GOVERN. IN CASE OF CONFLICT, CONSULT THE ARCHITECT.
9. PARTITIONS ARE DIMENSIONED FROM FINISH FACE TO FINISH FACE, UNLESS OTHERWISE NOTED. MAINTAIN DIMENSIONS MARKED "CLEAR". ALLOW FOR THICKNESS OF FINISHES.
10. COORDINATE AND PROVIDE BLOCKING FOR MILLWORK AND ITEMS ATTACHED OR MOUNTED TO WALLS OR CEILINGS.
11. UNDERCUT DOORS TO CLEAR TOP OF FLOOR FINISHES BY 1/4 INCH, UNLESS OTHERWISE NOTED.
- 12.CONCEALED INSULATING MATERIALS INSTALLED WITHIN WALL SHALL HAVE A FLAME SPREAD INDEX OF NOT MORE THAN 75 AND A SMOKE-DEVELOPED INDEX OF MOT MORE THAN 450.
- 13.INSULATING MATERIALS WHICH ARE SUBJECT TO DIRECT EXPOSURE TO POTENTIAL FIRE ON THE INSIDE OF THE BUILDING DUE TO INSTALLATION IN UNCONCEALED SPACES SHALL HAVE A FLAME SPREAD INDEX OF NOT MORE THAN 25 AND A SMOKE-DEVELOPED INDEX OF NOT MORE THAN 450.
- 14.MATERIALS EXPOSED WITHIN PLENUMS ARE REQUIRED TO BE NONCOMBUSTIBLE OR SHALL HAVE A FLAME SPREAD INDEX OF NOT MORE THAN 25 AND A SMOKE-DEVELOPED INDEX OF NOT MORE THAN 50 AS DETERMINED IN ACCORDANCE WITH ASTM E 84.

REFLECTED CEILING NOTES

1. DESIGN SUSPENDED CEILING FRAMING SYSTEMS TO RESIST A LATERAL FORCE OF 20% OF THE WEIGHT OF THE CEILING ASSEMBLY AND ANY LOADS TRIBUTARY TO THE SYSTEM. USE A MINIMUM CEILING WEIGHT OF 5 POUNDS PER SQUARE FOOT TO DETERMINE THE LATERAL FORCE.
2. WHERE CEILING LOADS DO NOT EXCEED 5 POUNDS PER SQUARE FOOT AND WHERE PARTITIONS ARE NOT CONNECTED TO THE CEILING SYSTEM, THE FOLLOWING BRACING METHODS MAY BE EMPLOYED:

A. PROVIDE LATERAL SUPPORT BY FOUR WIRES OF MINIMUM NO. 12 GAUGE SPLAYED IN FOUR DIRECTIONS 90 DEGREES APART, AND CONNECTED TO THE MAIN RUNNER WITHIN 2" OF THE CROSS RUNNER AND TO THE STRUCTURE ABOVE AT AN ANGLE NOT EXCEEDING 45 DEGREES FROM THE PLANE OF THE CEILING. PROVIDE THESE LATERAL SUPPORT POINTS 12 FEET ON CENTER IN EACH DIRECTION, WITH THE FIRST POINT WITHIN 4' FROM EACH WALL.

B. ALLOW FOR LATERAL MOVEMENT OF THE SYSTEM. ATTACH MAIN RUNNERS AND CROSS RUNNERS AT TWO ADJACENT WALLS; MAINTAIN CLEARANCE BETWEEN THE WALL AND THE RUNNERS AT THE OTHER TWO WALLS.

C. PROVIDE VERTICAL SUPPORT AS REQUIRED IN BUILDING CODES. IN ADDITION, VERTICALLY SUPPORT ENDS OF RUNNERS WITHIN 8" OF DISCONTINUITIES SUCH AS MAY OCCUR WHERE THE CEILING IS INTERRUPTED BY A WALL.

D. SUPPORT LIGHT FIXTURES AND AIR DIFFUSERS DIRECTLY BY WIRES TO THE STRUCTURE ABOVE.
3. LOCATE REGISTERS AND LIGHTING FIXTURES WITHIN GRID LINES. CENTER SPRINKLER HEADS, SPEAKERS, RECESSED FIXTURES, AND SIMILAR CEILING ELEMENTS IN ACOUSTICAL UNITS, UNLESS OTHERWISE NOTED.
4. FINISH HVAC DIFFUSERS, DRAPERY POCKETS, AND SPEAKER GRILLES TO MATCH ADJACENT FINISH, UNLESS OTHERWISE NOTED.
5. REFER TO MEP DRAWINGS, FIRE PROTECTION DRAWINGS AND PROJECT MANUAL FOR DESIGN OF THESE SYSTEMS. LOCATIONS OF FIXTURES, REGISTERS, SWITCHES, ETC. SHALL BE SUBMITTED TO ARCHITECT FOR REVIEW, COMMENCING CONSTRUCTION.
6. ALL FIXTURES TO BE LAMPED 3500K

ABBREVIATIONS (CONTINUED)

|        |                         |                      |                        |
|--------|-------------------------|----------------------|------------------------|
| R      |                         | T                    |                        |
| RD     | ROOF DRAIN              | THK                  | THICK                  |
| RDR    | READER                  | TLT                  | TOILET                 |
| RECES  | RECESSED                | TRAF                 | TRAFFIC                |
| RECPT  | RECEPTACLE              | TRANS                | TRANSPARENT            |
| REF    | REFER(ENCE)             | TRTD                 | TREATED                |
| REFL   | REFLECTED               | T&G                  | TONGUE AND GROOVE      |
| REFR   | REFRIGERATOR            | TYP                  | TYPICAL                |
| REQD   | REQUIRED                | U                    |                        |
| RESIS  | RESIST(ANT)(IVE)        | UNDRLAY UNDERLAYMENT |                        |
| REINF  | REINFORCE(D)(ING)(MENT) | UTIL                 | UTILITY                |
| RESIL  | RESILIENT               | UNO                  | UNLESS NOTED OTHERWISE |
| RFG    | ROOFING                 | V                    |                        |
| RM     | ROOM                    | VEH                  | VEHICLE                |
| RO     | ROUGH OPENING           | VERT                 | VERTICAL               |
| S      |                         | VIF                  | VERIFY IN FIELD        |
| SCR    | SCRIBE                  | W                    |                        |
| SECUR  | SECURITY                | W/                   | WITH                   |
| SF     | SQUARE FEET             | WC                   | WATER CLOSET           |
| SGL    | SINGLE                  | WD                   | WOOD                   |
| SHORG  | SHORING                 | WDW                  | WINDOW                 |
| SIM    | SIMILAR                 | W/O                  | WITHOUT                |
| SPM    | SINGLE-PLY MEMBRANE     | WT                   | WEIGHT                 |
| SST    | STAINLESS STEEL         | WTRPRF               | WATERPROOFING          |
| STD    | STANDARD                |                      |                        |
| STL    | STEEL                   |                      |                        |
| STRFR  | STOREFRONT              |                      |                        |
| STRUCT | STRUCTURAL              |                      |                        |
| SURF   | SURFACE                 |                      |                        |
| SUSP   | SUSPENDED               |                      |                        |
| SYS    | SYSTEM(S)               |                      |                        |

ENERGY REQUIREMENTS

1. EACH WINDOW AND DOOR LOCATED IN WALLS WHICH SEPARATE CONDITIONED AND UNCONDITIONED SPACE ( INCLUDING BUILDING EXTERIOR ) SHALL BE LABELED BY THE MANUFACTURER TO CERTIFY COMPLIANCE WITH THE REQUIREMENTS OF NATIONAL FENESTRATION RATING COUNCIL PER NFRC 100 AND 200 FOR FIELD VERIFICATION BY THE INSPECTOR. ( CMEC SECTION 102.3 ).

ABBREVIATIONS

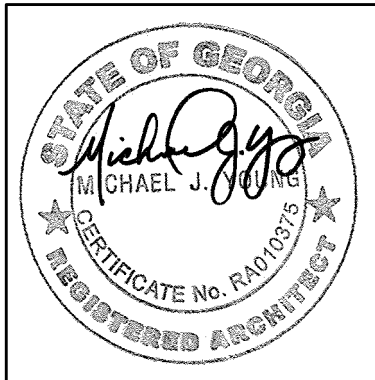
|        |                                   |         |  |
|--------|-----------------------------------|---------|--|
| A      |                                   | G       |  |
| ACCES  | ACCESSORY                         | GA      | GAUGE                                      |
| ACOUS  | ACOUSTIC(AL)                      | GFRG    | GLASS FIBER REINFORCED CONCRETE            |
| AFF    | ABOVE FINISHED FLOOR              | GFRG    | GLASS FIBER REINFORCED GYPSUM              |
| AL     | ALUMINUM                          | GFRP    | GLASS FIBER REINFORCED PLASTER             |
| ALT    | ALTERNATE                         | GL      | GLASS                                      |
| ANNUNC | ANNUNCIATOR                       | GR      | GRAD(E)(ING)                               |
| ANOD   | ANODIZED                          | GYP     | GYPSUM                                     |
| APPL   | APPLIANCE                         | GWB     | GYPSUM WALL BOARD                          |
| ARCH   | ARCHITECT(URAL)                   | H       |  |
| AUTO   | AUTOMATIC                         | HD      | HEAD                                       |
| AVG    | AVERAGE                           | HDWD    | HARDWOOD                                   |
| &      | AND                               | HDWE    | HARDWARE                                   |
| B      |                                   | HM      | HOLLOW METAL                               |
| BLDG   | BUILDING                          | HORIZ   | HORIZONTAL                                 |
| BOLLD  | BOLLARD                           | HVAC    | HEATING, VENTILATING, AND AIR CONDITIONING |
| BD     | BOARD                             | I       |  |
| BLKG   | BLOCKING                          | INFO    | INFORMATION                                |
| BRDLM  | BROADLOOM                         | INSTRUM | INSTRUMENT(ATION)                          |
| BU     | BUILT UP                          | INSUL   | INSULATION                                 |
| C      |                                   | INTLK   | INTERLOCK(ING)                             |
| CAB    | CABINET                           | INT     | INTERIOR                                   |
| CPT    | CARPET                            | INFILTR | INFILTRATION                               |
| CEM    | CEMENT(ITIOUS)                    | J       |  |
| CER    | CERAMIC                           | JAN     | JANITOR                                    |
| CLG    | CEILING                           | K       |  |
| COATG  | COATING                           | KIT     | KITCHEN                                    |
| COILG  | COILING                           | L       |  |
| CONC   | CONCRETE                          | LAV     | LAVATORY                                   |
| CONSTR | CONSTRUCTION                      | LB      | POUND                                      |
| CONT   | CONTINUOUS(ATION)                 | £       | BRITISH POUND (CURRENCY)                   |
| CONTR  | CONTRACT(OR)                      | LT      | LIGHT                                      |
| COV    | COVER                             | LVLG    | LEVELING                                   |
| CMU    | CONCRETE MASONRY UNIT             | LVR     | LOUVER                                     |
| D      |                                   | M       |  |
| DBL    | DOUBLE                            | MAX     | MAXIMUM                                    |
| DEPT   | DEPARTMENT                        | MFD     | MANUFACTURED                               |
| DES    | DESIGN(ED)                        | MFR     | MANUFACTURER                               |
| DET    | DETAIL                            | MECH    | MECHANICAL                                 |
| DF     | DRINKING FOUNTAIN                 | MET     | METAL                                      |
| DIA    | DIAMETER                          | MEMB    | MEMBRANE                                   |
| DIFF   | DIFFUSER                          | MEZZ    | MEZZANINE                                  |
| DIM    | DIMENSION                         | MIN     | MINIMUM                                    |
| DISP   | DISPENSER                         | MISC    | MISCELLANEOUS                              |
| DIV    | DIVISION                          | MLWK    | MILLWORK                                   |
| DN     | DOWN                              | MOIST   | MOISTURE                                   |
| \$     | DOLLAR (US CURRENCY)              | MOT     | MOTOR(IZED)                                |
| DR     | DOOR                              | MTD     | MOUNTED                                    |
| DSCON  | DISCONNECT                        | N       |  |
| DWR    | DRAWER                            | NIC     | NOT IN CONTRACT                            |
| E      |                                   | NO      | NUMBER                                     |
| EIFS   | EXTERIOR INSULATION FINISH SYSTEM | NTS     | NOT TO SCALE                               |
| ELAST  | ELASTOMERIC                       | O       |  |
| ELEC   | ELECTRICAL                        | ORNA    | ORNAMENTAL                                 |
| EMBED  | EMBEDD(ED)(ING)                   | OVFL    | OVERFLOW                                   |
| ENGR   | ENGINEER(ED)                      | OVHD    | OVERHEAD                                   |
| ENTR   | ENTRANCE                          | OPNG    | OPENING(S)                                 |
| EOD    | EMERGENCY OVERFLOW DRAIN          | OPR     | OPERABLE                                   |
| EQ     | EQUAL                             | P       |  |
| EQUIP  | EQUIPMENT                         | PTN     | PARTITION                                  |
| EXIST  | EXISTING                          | PEDTR   | PEDESTRIAN                                 |
| EXP JT | EXPANSION JOINT                   | PBD     | PARTICLE BOARD                             |
| EXPS   | EXPOSE(D)                         | PNL     | PANEL                                      |
| EXT    | EXTERIOR                          | POLYST  | POLYSTYRENE                                |
| F      |                                   | PORT    | PORTABLE                                   |
| FAB    | FABRICATION                       | PREFIN  | PREFINISHED                                |
| FD     | FLOOR DRAIN                       | PREFAB  | PREFABRICATED                              |
| FE     | FIRE EXTINGUISHER                 | PLAM    | PLASTIC LAMINATE                           |
| FE&C   | FIRE EXTINGUISHER AND CABINET     | PLAS    | PLASTER                                    |
| FHC    | FIRE HOSE CABINET                 | PLSTC   | PLASTIC                                    |
| FIN    | FINISH                            | PLYWD   | PLYWOOD                                    |
| FLDG   | FOLDING                           | PRTECN  | PROTECTION                                 |
| FPLC   | FIREPLACE                         |         |  |
| FR     | FIRE RAT(ING)(ED)                 |         |  |
| FRMG   | FRAMING                           |         |  |
| FXD    | FIXED                             |         |  |
| FXTR   | FIXTURE                           |         |  |
| FLR    | FLOOR(ING)                        |         |  |
| FURN   | FURNITURE                         |         |  |
| FWC    | FABRIC WALL COVERING              |         |  |



INTERIORS • ARCHITECTURE  
6600 SUGARLOAF PARKWAY  
SUITE 400-256  
DULUTH, GA 30097  
404.348.4406 OFFICE  
404.602.0023  
www.liquiddesignstudios.com  
info@liquiddesignstudios.com

CONSULTING FIRM

PROFESSIONAL SEAL



1/15/2019  
ARCHITECT OF RECORD:  
MICHAEL J. YOUNG RA 010375

OWNER

APRILE  
THOMAS  
PROJECT  
THE TWINS  
ACADEMY  
ADDITION

3170 PANOLA ROAD

LITHONIA, GA 30038

PROJ. NUMBER 200638

ISSUE DATE: 1/15/2019

MARK: DATE: DESCRIPTION:

ISSUED FOR  
CONSTRUCTION

SHEET NAME

GENERAL  
NOTES

SHEET NUMBER

A0.1

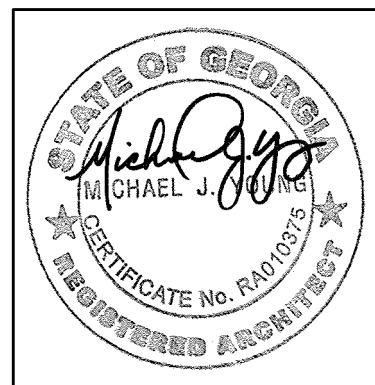




INTERIORS • ARCHITECTURE  
6600 SUGARLOAF PARKWAY  
SUITE 400-256  
DULUTH, GA 30097  
404.348.4406 OFFICE  
404.602.0023  
www.liquiddesignstudios.com  
info@liquiddesignstudios.com

CONSULTING FIRM

PROFESSIONAL SEAL



1/15/2019  
ARCHITECT OF RECORD:  
MICHAEL J. YOUNG RA 010375

OWNER

APRILE  
THOMAS  
PROJECT  
THE TWINS  
ACADEMY  
ADDITION

3170 PANOLA ROAD  
LITHONIA, GA 30038

PROJ. NUMBER 200638

|                       |       |              |
|-----------------------|-------|--------------|
| ISSUE DATE: 1/15/2019 |       |              |
| MARK:                 | DATE: | DESCRIPTION: |
|                       |       |              |
|                       |       |              |
|                       |       |              |
|                       |       |              |
|                       |       |              |

ISSUED FOR  
CONSTRUCTION

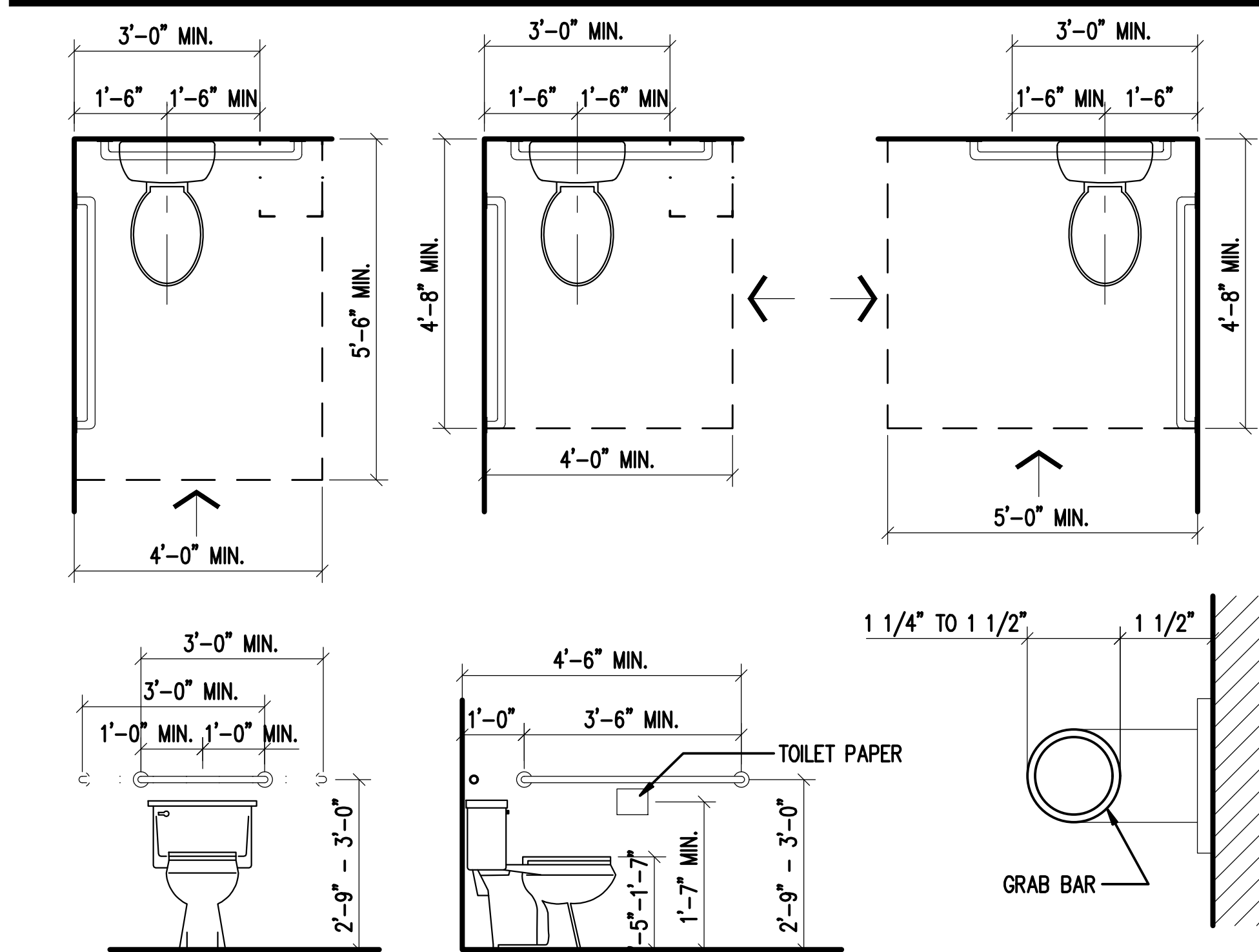
SHEET NAME  
TYPICAL  
DETAILS

SHEET NUMBER

A0.2

200638

THE TWINS ACADEMY ADDITION



**SINGLE USER TOILET**  
SCALE: 1/2" = 1'-0"

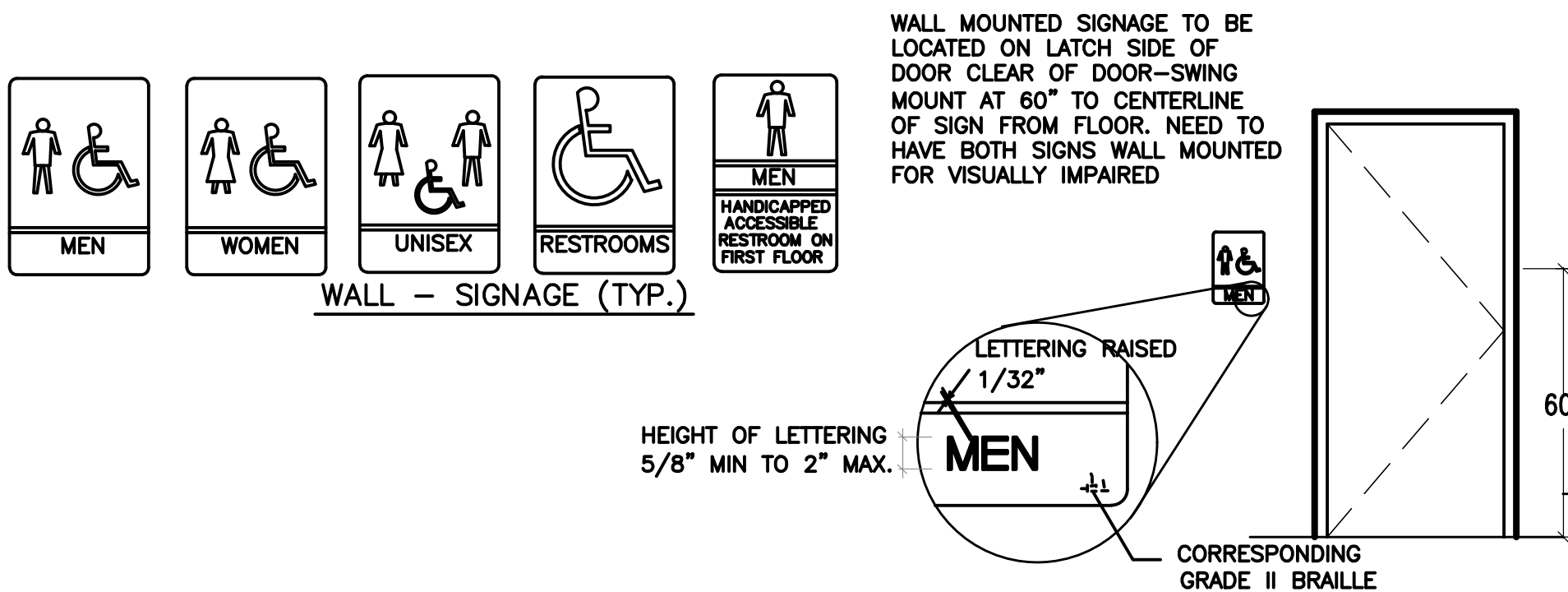
1

WALL MOUNTED SIGNAGE

1. THE INTERNATIONAL SYMBOL OF ACCESSIBILITY IS INSTALLED ON THE WALL ADJACENT TO THE LATCH SIDE OF THE DOOR. THE BORDER DIMENSION OF THIS PICTOGRAM SHALL BE A MINIMUM OF 6" IN HEIGHT. WHERE THERE IS NO WALL SPACE ON THE LATCH SIDE, INCLUDING AT DOUBLE LEAF DOORS, SIGNS SHALL BE PLACED ON THE NEAREST ADJACENT WALL, PREFERABLY ON THE RIGHT.
2. VERBAL DESCRIPTION AS TO RESTROOM USAGE (I.E. MEN'S RESTROOM, ETC.) IS PLACED DIRECTLY BELOW THE SYMBOL OF ACCESSIBILITY.
3. THE CHARACTERS AND BACKGROUND OF THE SIGN ARE EGGSHELL, MATTE OR OTHER NON-GLARE FINISH AND THE COLOR AND CONTRAST OF THE SIGN DISTINCTIVELY CONTRASTS WITH THE COLOR AND CONTRAST OF THE WALL.
4. THE REQUIRED COLOR OF THE SYMBOL OF ACCESSIBILITY CONSISTS OF A WHITE FIGURE ON A BLUE BACKGROUND. HOWEVER, THE APPROPRIATE ENFORCEMENT AGENCY MAY APPROVE SPECIAL SIGNS TO COMPLEMENT DECOR WHEN SUCH SIGNS PROVIDE ADEQUATE DIRECTION TO INDIVIDUALS WITH DISABILITIES.
5. SIGNS ARE CENTERED ON THE WALL 60" FROM THE FLOOR.
6. LETTERS AND NUMERALS ARE RAISED 1/32", ARE SANS-SERIF UPPERCASE CHARACTERS AND ARE ACCOMPANIED BY GRADE 2 BRAILLE. CHARACTERS ARE MINIMUM 5/8" HIGH AND A MAXIMUM OF 2" HIGH.
7. MOUNTING LOCATION ALLOWS A PERSON TO APPROACH WITHIN 3" OF THE SIGNAGE WITHOUT ENCOUNTERING PROTRUDING OBJECTS OR STANDING WITHIN THE SWING OF A DOOR.

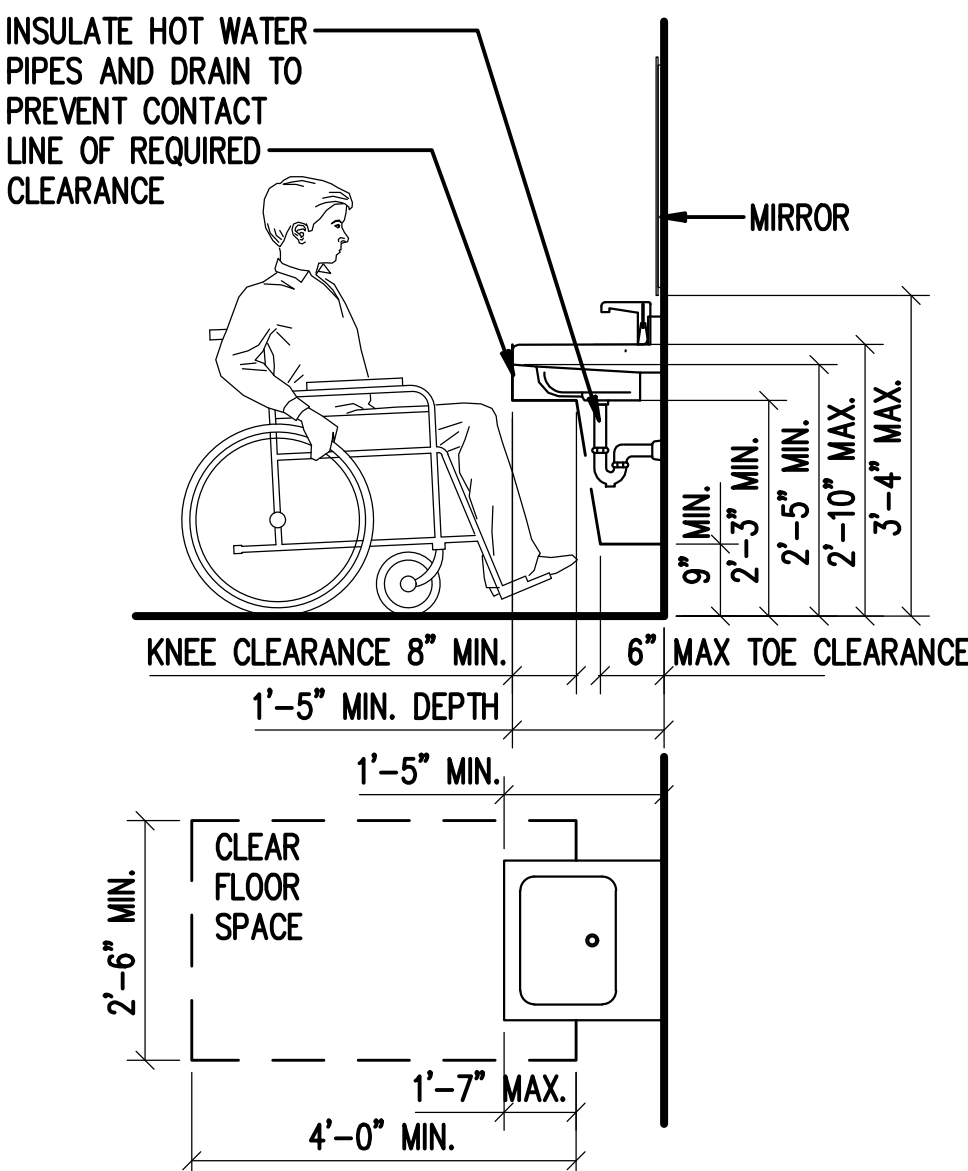
**SIGNAGE NOTES**

3



**WALL SIGNAGE - NTS**

7

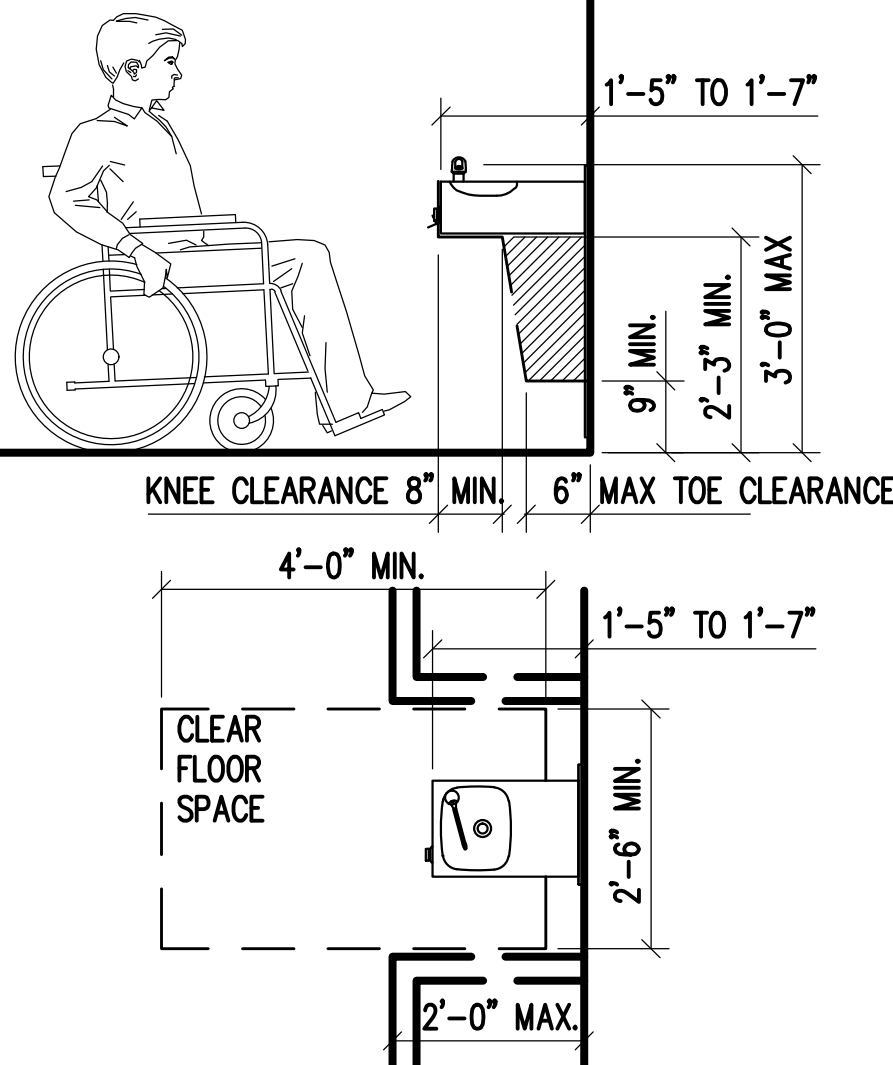


**SINK OR VANITY**

SCALE: 1/2" = 1'-0"

2

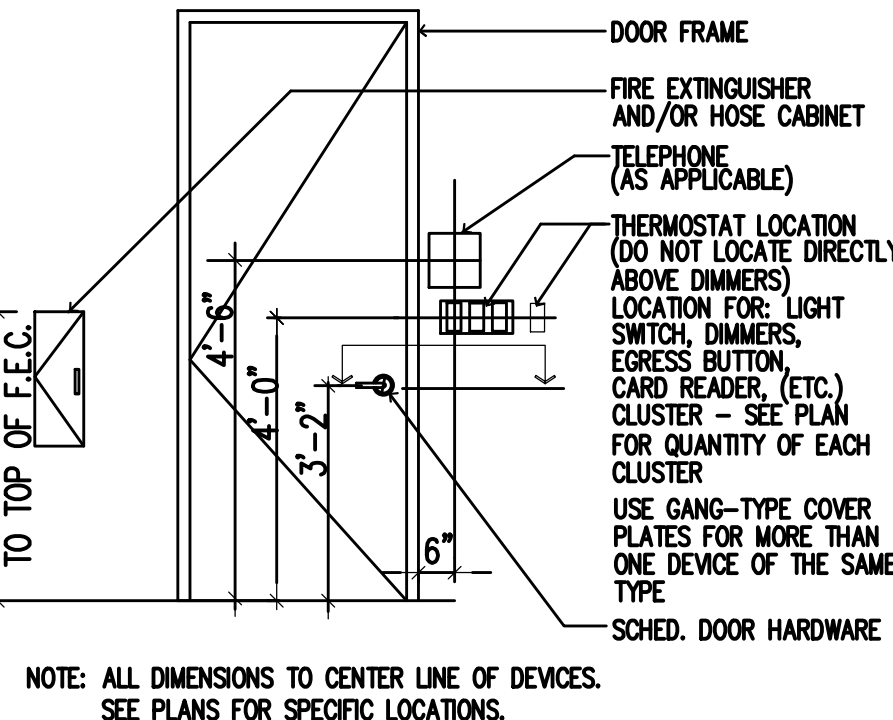
EQUIPMENT PERMITTED IN  
SHADED AREA



**DRINKING FOUNTAIN**

SCALE: 1/2" = 1'-0"

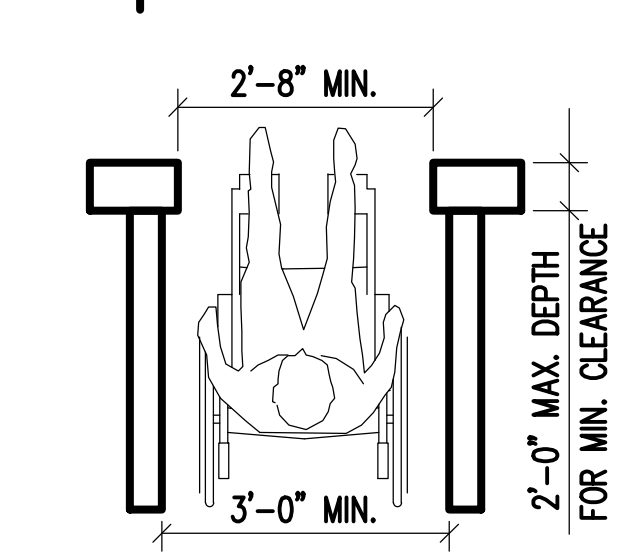
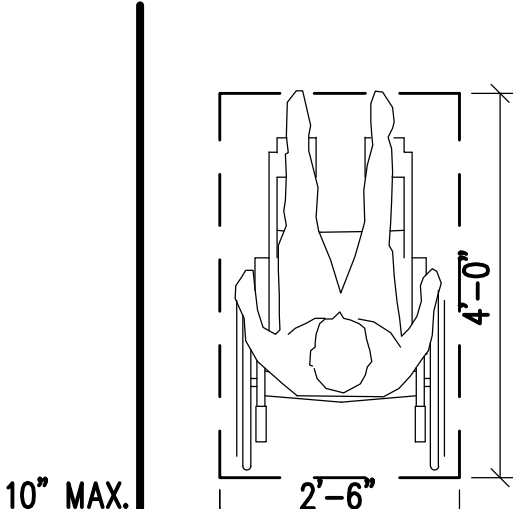
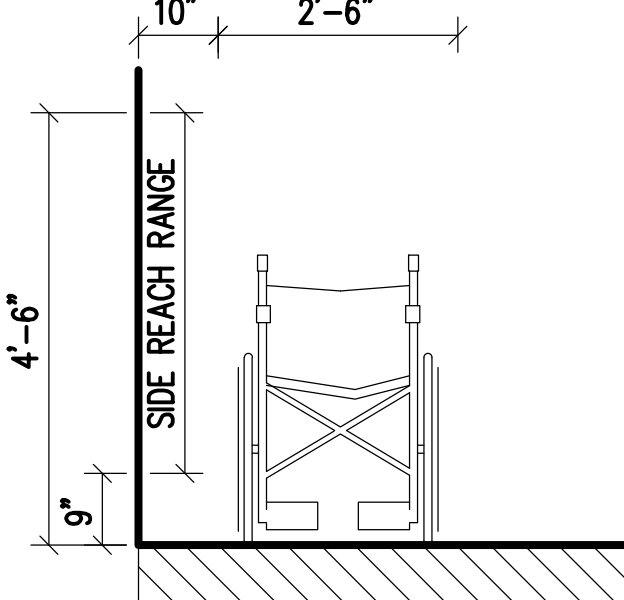
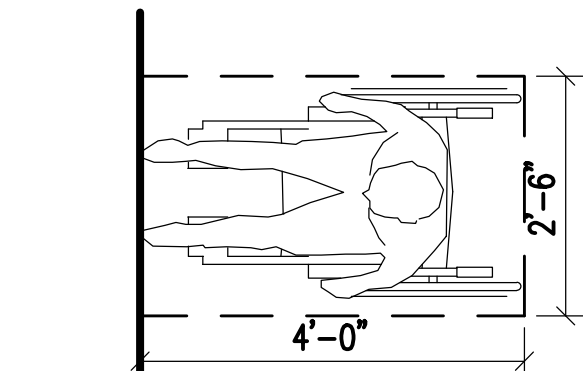
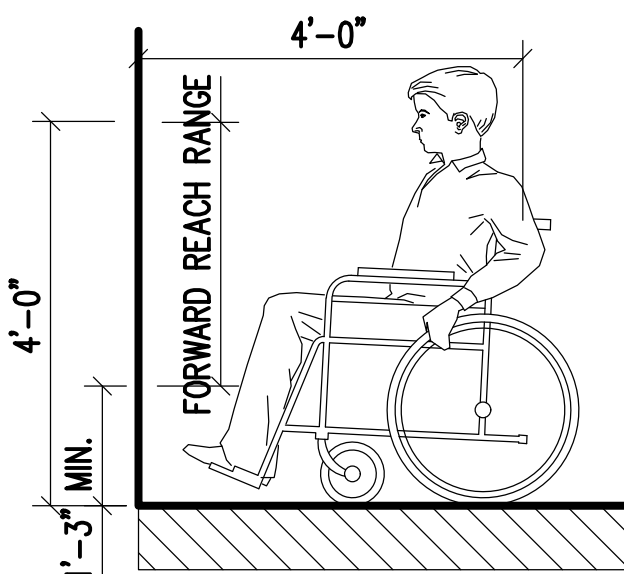
4



**TYP. MOUNTING HEIGHTS**

SCALE: N.T.S.

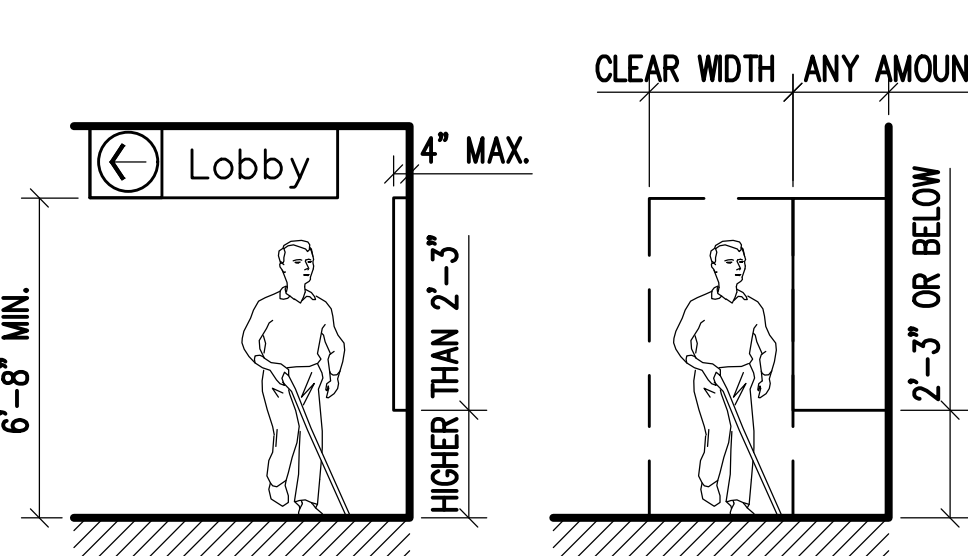
8



**REACH RANGES**

SCALE: 1/2" = 1'-0"

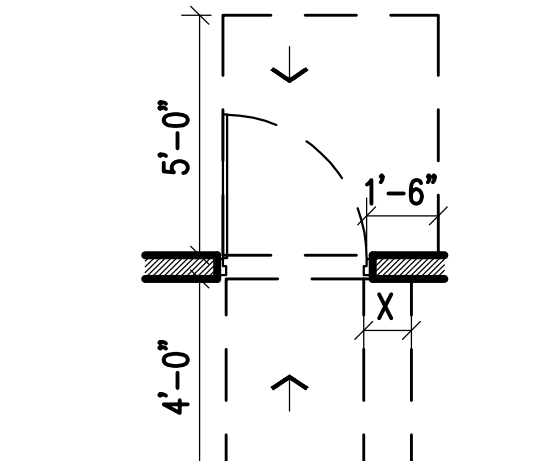
5



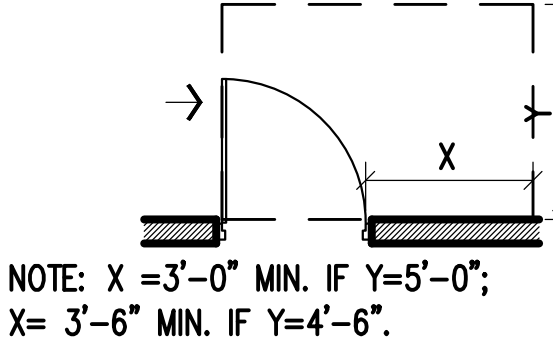
**PROTRUDING OBJECTS**

SCALE: 1/4" = 1'-0"

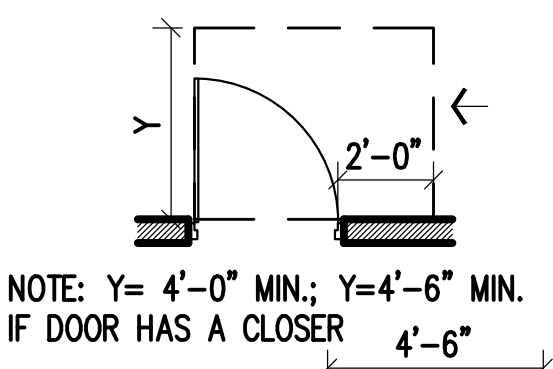
9



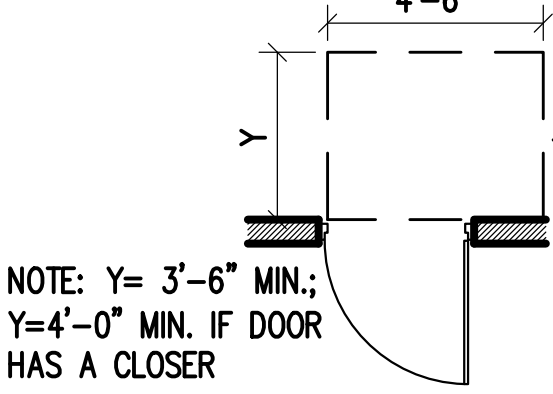
NOTE: X = 1'-0" IF DOOR HAS BOTH  
A CLOSER AND A LATCH



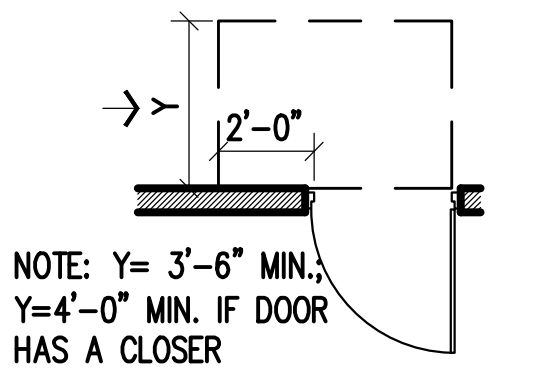
NOTE: X = 3'-0" MIN. IF Y=5'-0";  
X = 3'-6" MIN. IF Y=4'-6".



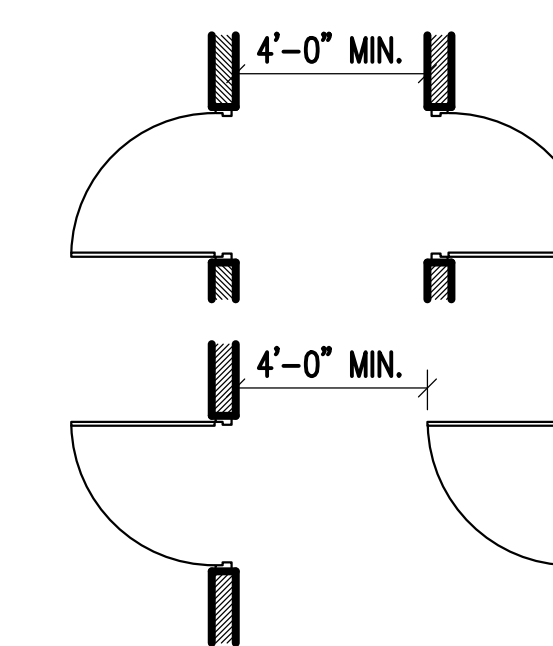
NOTE: Y = 4'-0" MIN.; Y=4'-6" MIN.  
IF DOOR HAS A CLOSER



NOTE: Y = 3'-6" MIN.;  
Y=4'-0" MIN. IF DOOR  
HAS A CLOSER



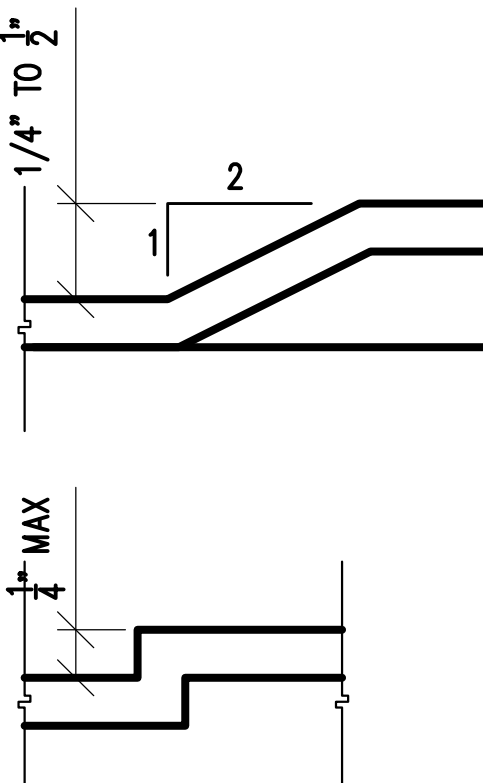
NOTE: Y = 3'-6" MIN.;  
Y=4'-0" MIN. IF DOOR  
HAS A CLOSER



**CLEARANCES**

SCALE: 1/4" = 1'-0"

6



**THRESHOLDS**

SCALE: FULL

10

COPYRIGHT 2010 LIQUID DESIGN STUDIOS, LLC



SURVEYOR'S NOTES

1. THIS PLAT IS A CORRECT REPRESENTATION OF THE LANDS PLATTED AND HAS BEEN PREPARED IN CONFORMITY WITH THE MINIMUM STANDARDS AND REQUIREMENTS OF LAW, BUT A GEORGIA LICENSED ATTORNEY AT LAW SHOULD BE CONSULTED CONCERNING CORRECT OWNERSHIP, WIDTH, AND LOCATION OF EASEMENTS AND THEIR TITLE QUESTIONS REVEALED BY TITLE EXAMINATION.
2. NOT ALL IMPROVEMENTS OR UTILITIES ARE SHOWN HEREON.
3. THE LOCATIONS OF THE UNDERGROUND UTILITIES SHOWN HEREON ARE BASED ON VISIBLE STRUCTURES AND MAPS OR ON THE GROUND MARKINGS PROVIDED BY THE UTILITY COMPANIES SERVING THAT UTILITY, AND ARE APPROXIMATE ONLY. THE PROPERTY SHOWN HEREON MAY BE SERVED BY UNDERGROUND UTILITIES WHICH ARE NOT SHOWN HEREON. ALL UTILITY COMPANIES SHOULD BE CONTACTED BEFORE BEGINNING ANY DESIGN OR CONSTRUCTION.
4. THE DATE OF FIELD WORK FOR THIS SURVEY IS NOVEMBER 20, 2006.
5. THE BASIS OF BEARINGS FOR THIS SURVEY IS GRID NORTH PER COBB COUNTY GPS MONUMENT "CCGN" & "CCGS".
6. THE SUBJECT PROPERTY SHOWN HEREON IS NOT LOCATED WITHIN A FLOOD HAZARD ZONE PER THE FEDERAL EMERGENCY MANAGEMENT AGENCY FLOOD INSURANCE RATE MAP: COMMUNITY PANEL NUMBER 13089C015H, EFFECTIVE DATE: MAY 7, 2001.
7. THE FIELD DATA UPON WHICH THIS PLAT IS BASED HAS A CLOSURE PRECISION OF ONE FOOT IN 44,047 FEET AND AN ANGULAR ERROR OF 8.6 SECONDS PER ANGLE POINT AND WAS ADJUSTED USING THE COMPASS RULE METHOD.
8. THIS PLAT HAS BEEN CALCULATED FOR CLOSURE AND HAS BEEN FOUND TO HAVE A CLOSURE PRECISION ONE FOOT IN 869,782 FEET.
9. THE EQUIPMENT USED FOR THIS SURVEY INCLUDED A TOPCON GTS-303 TOTAL STATION AND A PSON DATA COLLECTOR.
10. THIS PLAT WAS PREPARED FOR THE EXCLUSIVE USE OF THE PERSON, PERSONS, OR ENTITY NAMED HEREON. THIS PLAT DOES NOT EXTEND TO ANY UNNAMED PERSON, PERSONS OR ENTITY WITHOUT EXPRESS CERTIFICATION BY THE SURVEYOR NAMING SAID PERSON, PERSONS OR ENTITY.
11. AGILITY SURVEYING CO., INC. DOES NOT WARRANT THE EXISTENCE OR NONEXISTENCE OF ANY WETLANDS OR HAZARDOUS WASTES IN THE SURVEYED SITE.
12. THE CERTIFICATIONS SHOWN HEREON ARE INTENDED TO MEET THE GEORGIA PLAT ACT AND TECHNICAL STANDARDS OF THE OFFICIAL CODE OF GEORGIA CHAPTERS 180-1 THRU 180-10 AND ARE NOT A CERTIFICATION TO TITLE OR OWNERSHIP OF PROPERTY SHOWN. OWNERS OF ADJOINING PROPERTIES ARE ACCORDING TO CURRENT COUNTY RECORDS.
13. THE PROPERTY SHOWN HEREON IS SUBJECT TO ALL EASEMENTS AND RESTRICTIONS OF RECORD BOTH WRITTEN AND UNWRITTEN.

LEGEND

|          |                       |
|----------|-----------------------|
| ---      | PROPERTY LINE         |
| -.-.-    | CENTERLINE CREEK      |
| X-X-X    | CHAIN LINK FENCE      |
| o-o-o    | IRON FENCE            |
| W        | UNDERGROUND WATER     |
| UT       | UNDERGROUND TELEPHONE |
| SS       | SANITARY SEWER        |
| OHE      | OVERHEAD ELECTRIC     |
| G        | UNDERGROUND GAS       |
| SD-SD-SD | STORM DRAIN           |
| SS       | SANITARY SEWER        |
| IPF      | IRON PIN FOUND        |
| IPF      | 1/2" ROP PIN SET      |
| WV       | WATER VALVE           |
| OTF      | OPEN TOP PIPE         |
| CTP      | CRIMP TOP PIPE        |
| REB      | REBAR                 |
| A/C      | AIR CONDITIONER       |
| IPF      | IRON PIN FOUND        |
| LP       | LIGHT POLE            |
| GW       | GUY WIRE              |
| PP       | POWER POLE            |
| TB       | TELEPHONE BOX         |
| SW       | SIGN                  |
| CLF      | CHAIN LINK FENCE      |
| R/W      | RIGHT-OF-WAY LINE     |
| TPD      | TELEPHONE PEDISTAL    |
| TSP      | TRAFFIC SIGNAL POLE   |
| TSB      | TRAFFIC SIGNAL BOX    |
| GM       | GAS METER             |

SURVEY REFERENCES:

PLAT OF WINSLOW CROSSING SOUTH SUBDIVISION. RECORDED IN PLAT BOOK 71, PAGE 39, DATED MAY 1, 1980.

PLAT OF WINSLOW CROSSING NORTH SUBDIVISION PHASE I. RECORDED IN PLAT BOOK 76, PAGE 16, DATED MAY 1, 1980.

PLAT OF WINSLOW CROSSING SUBDIVISION. RECORDED IN PLAT BOOK 66, PAGE 164, DATED MAY 29, 1975.

PLAT OF WINSLOW CROSSING SUBDIVISION NORTH PHASE II. RECORDED IN PLAT BOOK 83, PAGE 17, DATED MAY 29, 1975.

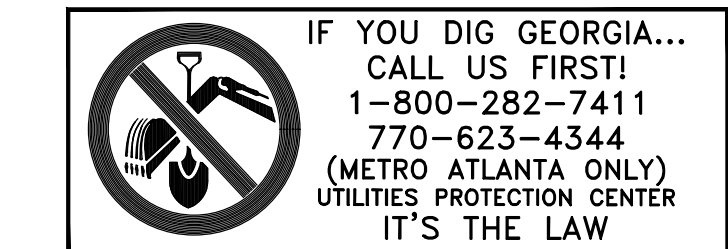
DEED FOR TURNBERRY PLACE APARTMENTS, L.L.C. RECORDED IN DEED BOOK 18364, PAGE 241, DATED JANUARY 26, 2006.

SURVEYOR'S CERTIFICATION

IN MY OPINION, THIS PLAT IS A CORRECT REPRESENTATION OF THE LAND PLATTED AND HAS BEEN PREPARED IN CONFORMITY WITH THE MINIMUM STANDARDS AND REQUIREMENTS OF LAW.

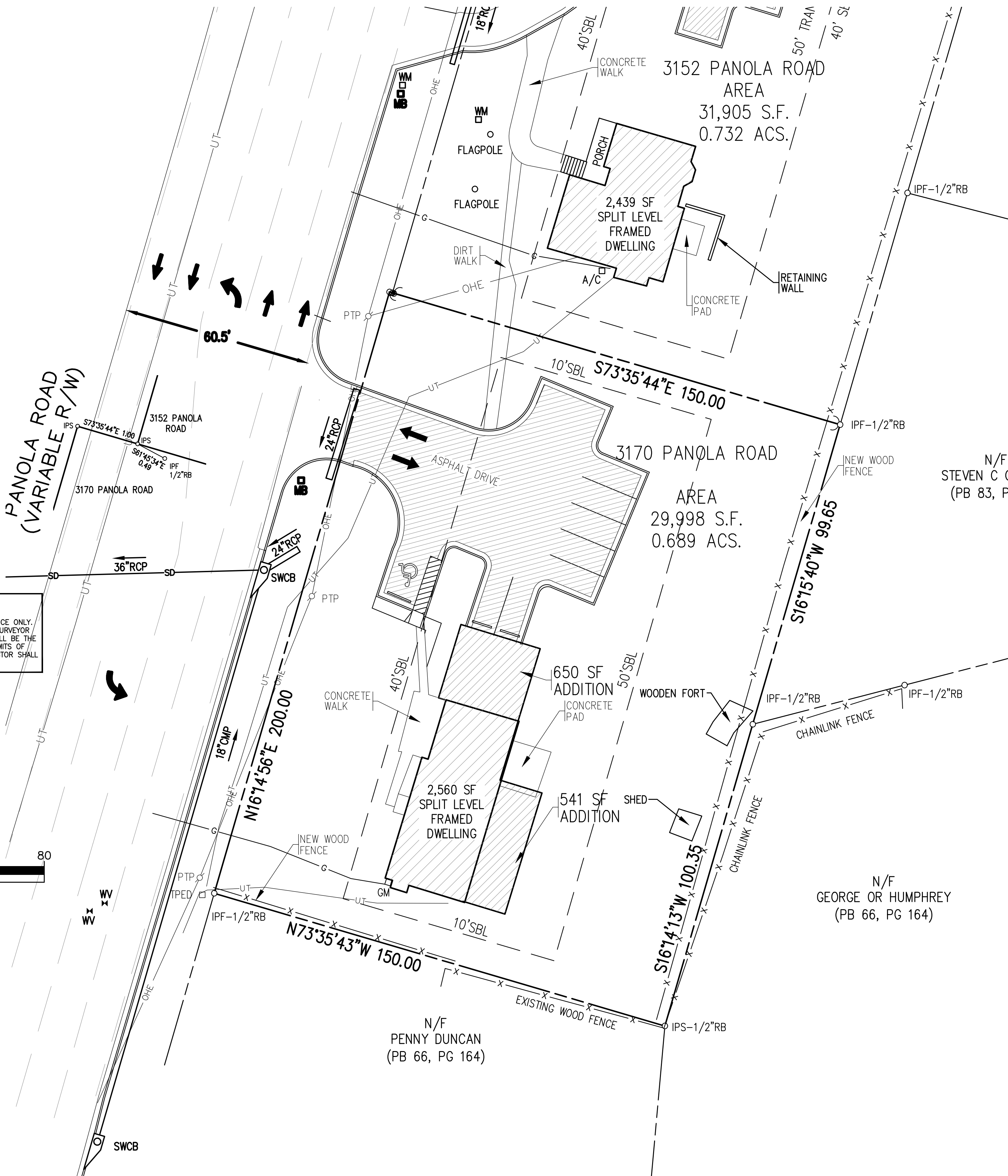
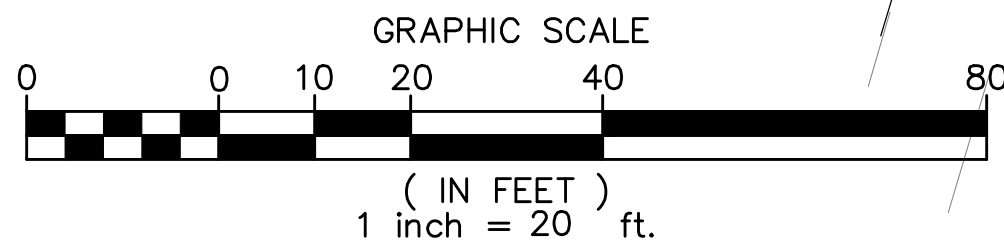
ZONING: R-100

FRONT YARD SETBACK = 40 FEET  
REAR YARD SETBACK = 40 FEET  
SIDE YARD SETBACK = 10 FEET



\*\*\*CAUTION\*\*\*

THE UTILITIES SHOWN HEREON ARE FOR THE CONTRACTORS CONVENIENCE ONLY. THERE MAY BE OTHER UTILITIES NOT SHOWN ON THESE PLANS. THE SURVEYOR ASSUMES NO RESPONSIBILITY FOR THE LOCATIONS SHOWN AND IT SHALL BE THE CONTRACTOR'S RESPONSIBILITY TO VERIFY ALL UTILITIES WITHIN THE LIMITS OF THE WORK. ALL DAMAGE MADE TO EXISTING UTILITIES BY THE CONTRACTOR SHALL BE THE SOLE RESPONSIBILITY OF THE CONTRACTOR.



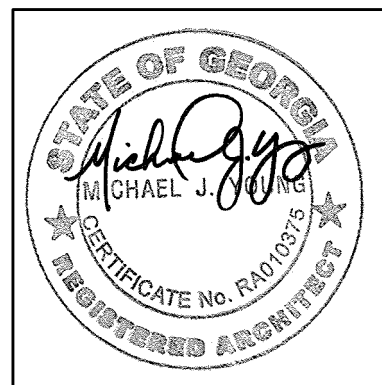
1 ARCHITECTURAL SITE PLAN  
1" = 20'-0"



INTERIORS • ARCHITECTURE  
4426 HUGH HOWELL ROAD  
SUITE B331  
TUCKER, GA 30084  
404.348.4406 OFFICE  
404.602.0023 FAX  
www.liquiddesignstudios.com  
michael@liquiddesignstudios.com

CONSULTING FIRM

PROFESSIONAL SEAL



1/15/2019  
ARCHITECT OF RECORD:  
MICHAEL J. YOUNG RA 010375

OWNER

APRILE  
THOMAS  
PROJECT  
THE TWINS  
ACADEMY  
ADDITION

3170 PANOLA ROAD  
LITHONIA, GA 30038

PROJ. NUMBER 200638

ISSUE DATE: 1/15/2019

| MARK: | DATE: | DESCRIPTION: |
|-------|-------|--------------|
|       |       |              |
|       |       |              |
|       |       |              |
|       |       |              |
|       |       |              |

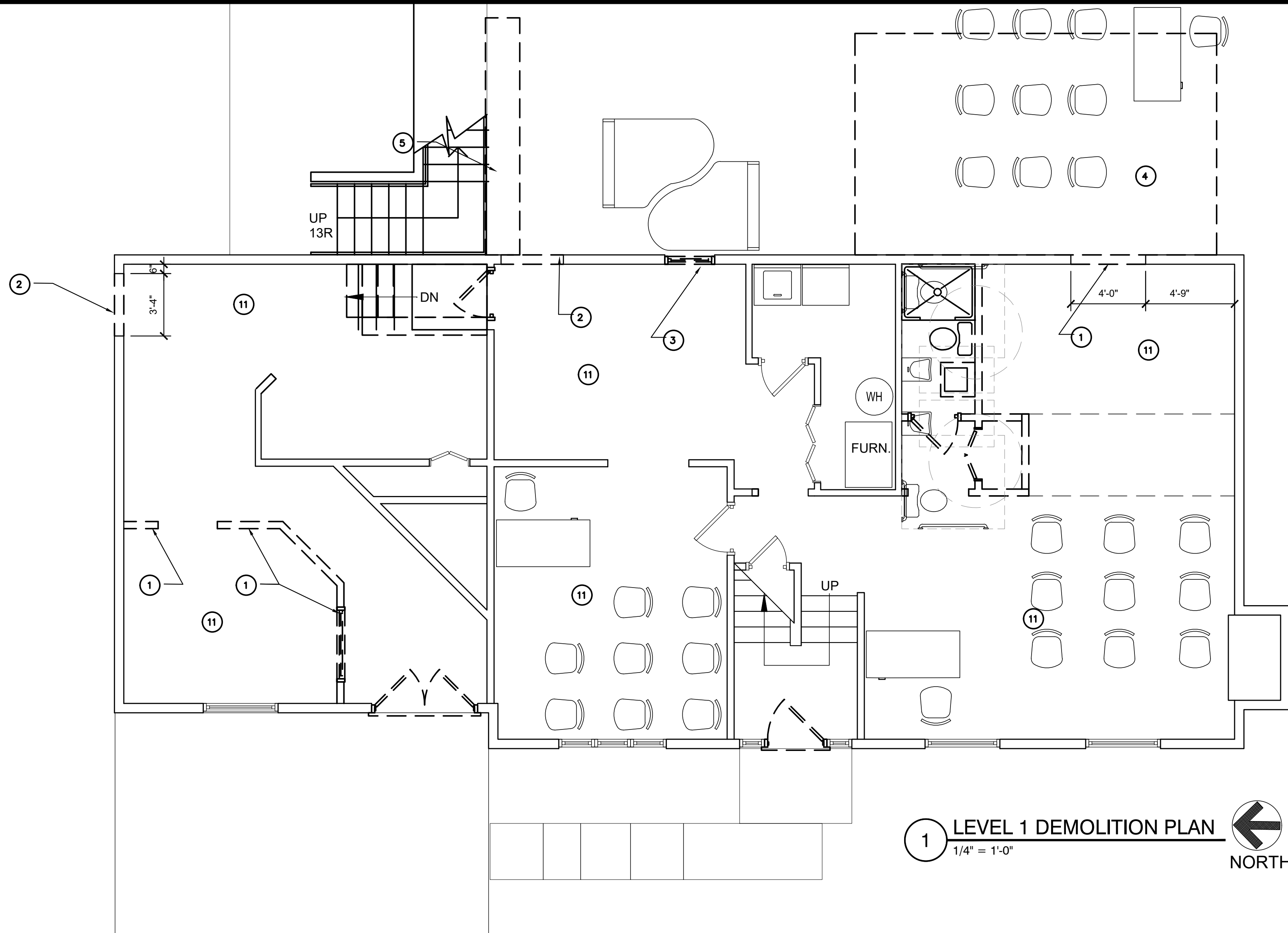
ISSUED FOR  
CONSTRUCTION

SHEET NAME  
PROPOSED  
SITE  
PLAN

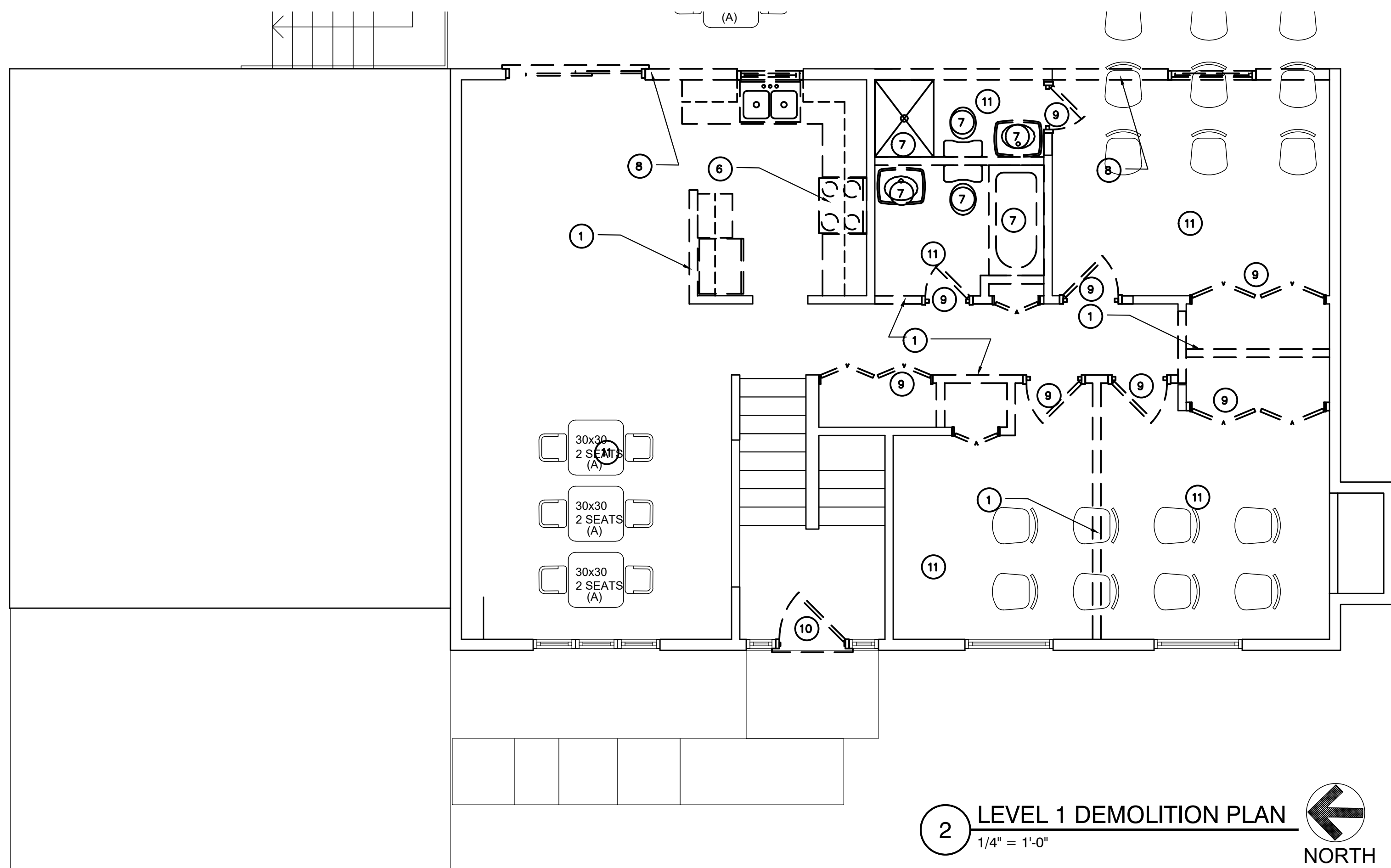
SHEET NUMBER

C1.1





1 LEVEL 1 DEMOLITION PLAN  
1/4" = 1'-0" NORTH



2 LEVEL 1 DEMOLITION PLAN  
1/4" = 1'-0" NORTH

- DEMOLITION NOTES
- 1 REMOVE EXISTING PARTITION AND PREP FLOOR AND CEILING TO MATCH ADJACENT FLOOR FINISH.
  - 2 CUT EXISTING WALL OPENING TO THE WIDTH INDICATED TO ACCOMMODATE NEW DOOR AND FRAME PER SHEET A1.0.
  - 3 REMOVE EXISTING WINDOW AND FRAMING BELOW TO ACCOMMODATE NEW DOOR OPENING PER SHEET A1.0.
  - 4 REMOVE EXISTING CONCRETE PAD AND PREP FOR NEW FOUNDATIONS IN ACCORD WITH CIVIL DRAWINGS AND SHEET A1.0.
  - 5 REMOVE EXISTING WALL AND PREP FOR NEW WALLS AND FINISHES
  - 6 REMOVE CABINETS, COUNTERS AND APPLIANCES AND PREP FOR NEW KITCHEN.
  - 7 REMOVE EXISTING PLUMBING FIXTURES AND CAP EXISTING LINES.
  - 8 REMOVE EXISTING WALL TO EXTENT INDICATED AFTER ADDITION IS FRAMED AND DRIED IN.
  - 9 REMOVE DOORS AND FRAMES AND PREP FLOORS AND CEILINGS FOR NEW FINISHES
  - 10 REMOVE EXISTING DOOR AND FRAME AND PREP FOR NEW OUTSWING DOOR
  - 11 REMOVE EXISTING FLOOR FINISH AND PREP FOR NEW FLOORING

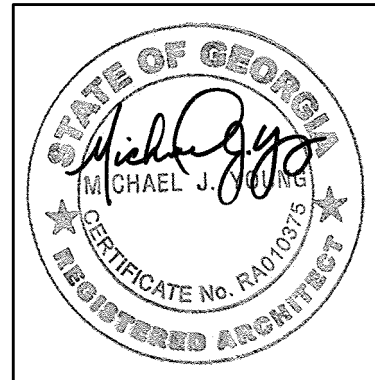
- EXISTING WALL TO REMAIN
- CONSTRUCTION TO BE DEMOLISHED
- NEW METAL STUD FRAMING @ 16" O.C. TYP. W/ 5/8" DRYWALL. SEE WALLTYPE FOR STUD THICKNESS
- TWO HOUR RATING



INTERIORS • ARCHITECTURE  
6600 SUGARLOAF PARKWAY  
SUITE 400-256  
DULUTH, GA 30097  
404.348.4406 OFFICE  
404.602.0023  
www.liquiddesignstudios.com  
info@liquiddesignstudios.com

CONSULTING FIRM

PROFESSIONAL SEAL



1/15/2019  
ARCHITECT OF RECORD:  
MICHAEL J. YOUNG RA 010375

OWNER

APRILE  
THOMAS  
PROJECT  
THE TWINS  
ACADEMY  
ADDITION

3170 PANOLA ROAD  
LITHONIA, GA 30038

PROJ. NUMBER 200638

|                       |       |              |
|-----------------------|-------|--------------|
| ISSUE DATE: 1/15/2019 |       |              |
| MARK:                 | DATE: | DESCRIPTION: |
|                       |       |              |
|                       |       |              |
|                       |       |              |
|                       |       |              |
|                       |       |              |

ISSUED FOR  
CONSTRUCTION

SHEET NAME  
DEMOLITION  
PLANS

SHEET NUMBER

D1.0

DOOR SCHEDULE

| DOOR HARDWARE |       | SIZE      |        |        | DOOR                      | RATING | FRAME              |                 | THRESHOLD | REMARKS                         |
|---------------|-------|-----------|--------|--------|---------------------------|--------|--------------------|-----------------|-----------|---------------------------------|
| TYPE          | SET # | WIDTH     | HEIGHT | THICK. |                           |        | MATERIAL/THICKNESS | MATERIAL/FINISH |           |                                 |
| A             | 1     | 3'-0"     | 6'-8"  | 1-3/4" | S.C. WOOD/PAINTED         | -      |                    | H.M./PT-1       | SADDLE    |                                 |
| B             | 2     | 3'-0"     | 6'-8"  | 1-3/4" | MASONITE/PAINTED          | .      |                    | H.M./PT-1       | MARBLE    |                                 |
| C             | 3     | 3'-0"     | 6'-8"  | 1-3/4" | MASONITE/PAINTED          | .      |                    | H.M./PT-1       | -         | HALF-GLASS UPPER DOOR, TEMPERED |
| D             | 4     | 2 (2'-8") | 6'-8"  | 1-3/4" | WOOD/ FULL GLASS TEMPERED | .      |                    | WD. PAINTED     | SADDLE    |                                 |
| E             | 4     | 2 (3'-0") | 6'-8"  | 1-3/4" | WOOD/ FULL GLASS TEMPERED | .      |                    | WD. STAINED     | SADDLE    |                                 |

| HARDWARE SET 1 - ENTRY SET |  |
|----------------------------|--|
| 3                          | MORTISE HINGES, STAINLESS                              |
| 1                          | BRUSHED STAINLESS KICK PLATE ON EXTERIOR               |
| 1                          | DEADBOLT WITH INTERIOR THUMB TURN                      |
| 1                          | CLOSER, OVERHEAD EXPOSED WITH BRUSHED STAINLESS FINISH |

| HARDWARE SET 2 - PRIVACY |  |
|--------------------------|--|
| 3                        | MORTISE HINGES, STAINLESS                              |
| 1                        | BRUSHED STAINLESS KICK PLATE ON PUSH SIDE              |
| 1                        | PRIVACY LOCK WITH PUSH BUTTON LEVER                    |
| 1                        | CLOSER, OVERHEAD EXPOSED WITH BRUSHED STAINLESS FINISH |

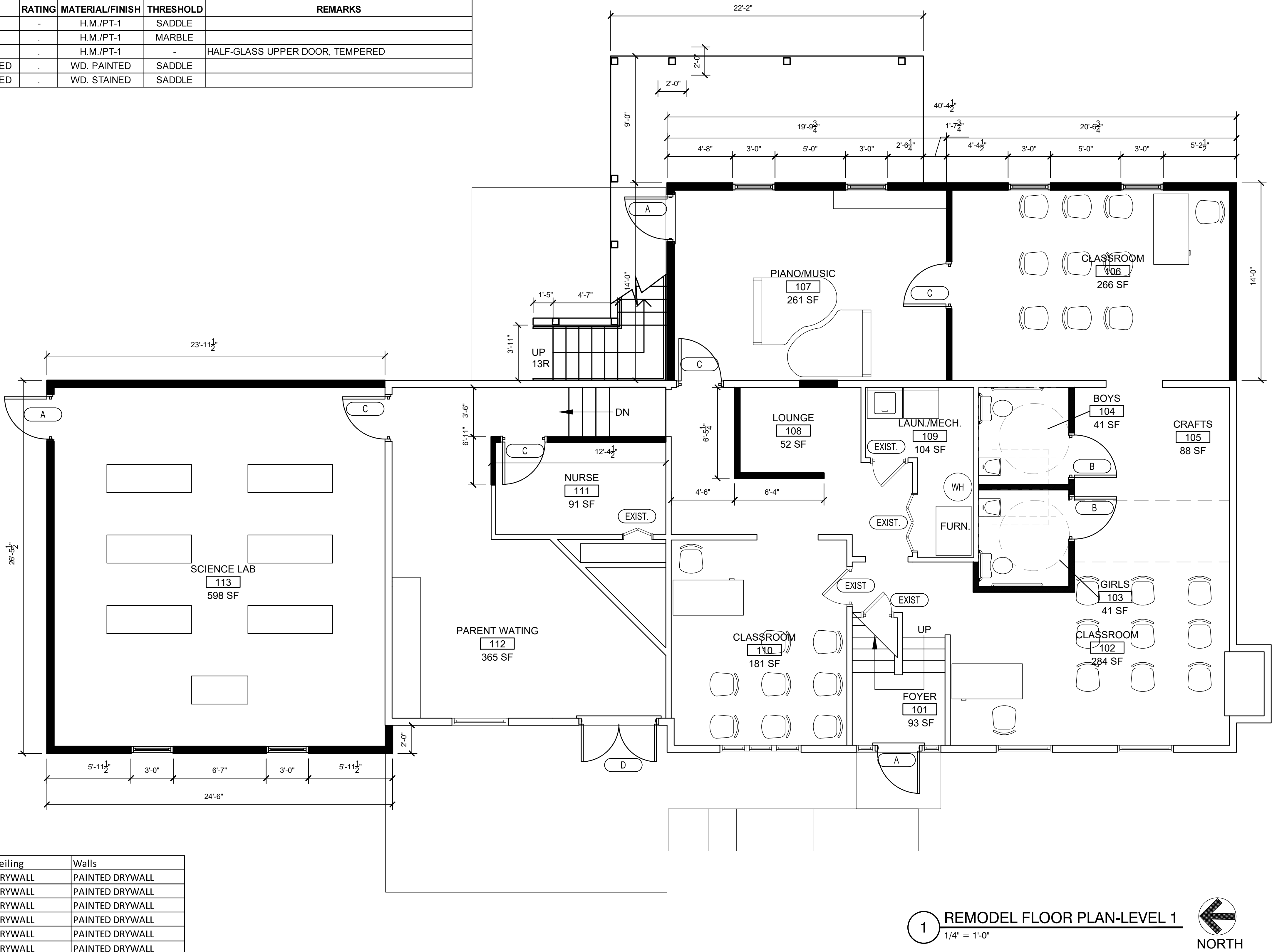
| HARDWARE SET 3 - CLASSROOM |  |
|----------------------------|--|
| 3                          | MORTISE HINGES, STAINLESS                              |
| 1                          | BRUSHED STAINLESS KICK PLATE ON PUSH SIDE              |
| 1                          | KEYED LEVER ON EXTERIOR, ACTIVE LEVER ON INTERIOR      |
| 1                          | CLOSER, OVERHEAD EXPOSED WITH BRUSHED STAINLESS FINISH |

| HARDWARE SET 4 - ENTRY SET OUTSWING |  |
|-------------------------------------|--|
| 6                                   | MORTISE HINGES, STAINLESS                              |
| 2                                   | BRUSHED STAINLESS KICK PLATE ON EXTERIOR               |
| 1                                   | DEADBOLT WITH INTERIOR THUMB TURN ON ACTIVE LEAF       |
| 2                                   | CLOSER, OVERHEAD EXPOSED WITH BRUSHED STAINLESS FINISH |

| ROOM NO. | ROOM NAME      | SQUARE FOOTAGE | OCCUPANCY TYPE PER NFPA 101 (2012) |
|----------|----------------|----------------|------------------------------------|
| 101      | FOYER          | 93             | N/A                                |
| 102      | CLASSROOM      | 284            | EDUCATIONAL                        |
| 103      | GIRLS          | 41             | N/A                                |
| 104      | BOYS           | 41             | N/A                                |
| 105      | CRAFTS         | 88             | EDUCATIONAL                        |
| 106      | CLASSROOM      | 266            | EDUCATIONAL                        |
| 107      | PIANO/MUSIC    | 261            | ACCESSORY ED.                      |
| 108      | LOUNGE         | 52             | ACCESSORY ED.                      |
| 109      | LAUN./MECH.    | 104            | N/A                                |
| 110      | CLASSROOM      | 181            | EDUCATIONAL                        |
| 111      | NURSE          | 91             | ACCESSORY ED.                      |
| 112      | PARENT WAITING | 365            | BUSINESS                           |
| 113      | SCIENCE LAB    | 598            | ACCESSORY ED.                      |
| 201      | HALL           | 135            | N/A                                |
| 202      | CLASSROOM      | 222            | EDUCATIONAL                        |
| 203      | CLASSROOM      | 299            | EDUCATIONAL                        |
| 204      | M/W TOILET     | 50             | N/A                                |
| 205      | MEN            | 45             | N/A                                |
| 206      | WOMEN          | 45             | N/A                                |
| 207      | DINING         | 264            | ACCESSORY ED.                      |
| 208      | KITCHEN        | 178            | ACCESSORY ED.                      |
| 209      | MEDIA ROOM     | 186            | EDUCATIONAL                        |

FINISH SCHEDULE

| Room No. | Room Name      | Floor           | Wall Base | Ceiling | Walls           |
|----------|----------------|-----------------|-----------|---------|-----------------|
| 101      | FOYER          | ENGINEERED WOOD | WOOD      | DRYWALL | PAINTED DRYWALL |
| 102      | CLASSROOM      | VCT             | WOOD      | DRYWALL | PAINTED DRYWALL |
| 103      | GIRLS          | CER. TILE       | CER. TILE | DRYWALL | PAINTED DRYWALL |
| 104      | BOYS           | CER. TILE       | CER. TILE | DRYWALL | PAINTED DRYWALL |
| 105      | CRAFTS         | VCT             | WOOD      | DRYWALL | PAINTED DRYWALL |
| 106      | CLASSROOM      | VCT             | WOOD      | DRYWALL | PAINTED DRYWALL |
| 107      | PIANO/MUSIC    | VCT             | WOOD      | DRYWALL | PAINTED DRYWALL |
| 108      | LOUNGE         | VCT             | WOOD      | DRYWALL | PAINTED DRYWALL |
| 109      | LAUN./MECH.    | VCT             | WOOD      | DRYWALL | PAINTED DRYWALL |
| 110      | CLASSROOM      | VCT             | WOOD      | DRYWALL | PAINTED DRYWALL |
| 111      | NURSE          | VCT             | WOOD      | DRYWALL | PAINTED DRYWALL |
| 112      | PARENT WAITING | ENGINEERED WOOD | WOOD      | DRYWALL | PAINTED DRYWALL |
| 113      | SCIENCE LAB    | VCT             | WOOD      | DRYWALL | PAINTED DRYWALL |
| 201      | HALL           | ENGINEERED WOOD | WOOD      | DRYWALL | PAINTED DRYWALL |
| 202      | CLASSROOM      | VCT             | WOOD      | DRYWALL | PAINTED DRYWALL |
| 203      | CLASSROOM      | VCT             | WOOD      | DRYWALL | PAINTED DRYWALL |
| 204      | M/W TOILET     | CER. TILE       | CER. TILE | DRYWALL | PAINTED DRYWALL |
| 205      | MEN            | CER. TILE       | CER. TILE | DRYWALL | PAINTED DRYWALL |
| 206      | WOMEN          | CER. TILE       | CER. TILE | DRYWALL | PAINTED DRYWALL |
| 207      | DINING         | ENGINEERED WOOD | WOOD      | DRYWALL | PAINTED DRYWALL |
| 208      | KITCHEN        | ENGINEERED WOOD | WOOD      | DRYWALL | PAINTED DRYWALL |
| 209      | MEDIA ROOM     | VCT             | WOOD      | DRYWALL | PAINTED DRYWALL |



1 REMODEL FLOOR PLAN-LEVEL 1  
1/4" = 1'-0"



EXISTING WALL TO REMAIN

CONSTRUCTION TO BE DEMOLISHED

NEW METAL STUD FRAMING @ 16" O.C., TYP. W/ 5/8" DRYWALL. SEE WALLTYPE FOR STUD THICKNESS

TWO HOUR RATING

HALL  
103  
XXX SF

G

A

ROOM NAME  
ROOM NUMBER  
SQUARE FOOTAGE

DOOR DESIGNATION

WALLTYPE, SEE A1.3 FOR CONSTRUCTION

CONSTRUCTION NOTES

- SEE INTERIOR DESIGN DRAWINGS FOR FINISH SELECTIONS AND LAYOUT
- EACH TOILET ROOM SHALL BE LABELED WITH MALE OR FEMALE SYMBOL SIGNAGE, SHALL CONTAIN A FULL HEIGHT, LOUVERED DOOR, AND PUSH-BUTTON LOCKING LEVER HANDLE HARDWARE (PER 2012 IPC, 403.2).

INTERIORS • ARCHITECTURE  
6600 SUGARLOAF PARKWAY  
SUITE 400-256  
DULUTH, GA 30097  
404.348.4406 OFFICE  
404.602.0023  
www.liquiddesignstudios.com  
info@liquiddesignstudios.com

CONSULTING FIRM

PROFESSIONAL SEAL

1/15/2019  
ARCHITECT OF RECORD:  
MICHAEL J. YOUNG RA 010375

OWNER

APRILE  
THOMAS  
PROJECT  
THE TWINS  
ACADEMY  
ADDITION

3170 PANOLA ROAD  
LITHONIA, GA 30038

PROJ. NUMBER 200638

| ISSUE DATE: 1/15/2019 |       |              |
|-----------------------|-------|--------------|
| MARK:                 | DATE: | DESCRIPTION: |
|                       |       |              |
|                       |       |              |
|                       |       |              |
|                       |       |              |
|                       |       |              |

ISSUED FOR  
CONSTRUCTION

SHEET NAME  
LEVEL 1  
FLOOR  
PLAN

SHEET NUMBER

A1.0

COPYRIGHT: 2019 LIQUID DESIGN STUDIOS, LLC

200638 THE TWINS ACADEMY ADDITION



DOOR SCHEDULE

| DOOR TYPE | HARDWARE SET # | WIDTH     | HEIGHT | THICK. | DOOR MATERIAL/THICKNESS   | RATING | FRAME MATERIAL/FINISH | THRESHOLD | REMARKS                         |
|-----------|----------------|-----------|--------|--------|---------------------------|--------|-----------------------|-----------|---------------------------------|
| A         | 1              | 3'-0"     | 6'-8"  | 1-3/4" | S.C. WOOD/PAINTED         | -      | H.M./PT-1             | SADDLE    |                                 |
| B         | 2              | 3'-0"     | 6'-8"  | 1-3/4" | MASONITE/PAINTED          | -      | H.M./PT-1             | MARBLE    |                                 |
| C         | 3              | 3'-0"     | 6'-8"  | 1-3/4" | MASONITE/PAINTED          | -      | H.M./PT-1             | -         | HALF-GLASS UPPER DOOR, TEMPERED |
| D         | 4              | 2 (2'-8") | 6'-8"  | 1-3/4" | WOOD/ FULL GLASS TEMPERED | -      | WD. PAINTED           | SADDLE    |                                 |
| E         | 4              | 2 (3'-0") | 6'-8"  | 1-3/4" | WOOD/ FULL GLASS TEMPERED | -      | WD. STAINED           | SADDLE    |                                 |

|                            |  |
|----------------------------|--|
| HARDWARE SET 1 - ENTRY SET |  |
| 3                          | MORTISE HINGES, STAINLESS                              |
| 1                          | BRUSHED STAINLESS KICK PLATE ON EXTERIOR               |
| 1                          | DEADBOLT WITH INTERIOR THUMB TURN                      |
| 1                          | CLOSER, OVERHEAD EXPOSED WITH BRUSHED STAINLESS FINISH |

|                          |  |
|--------------------------|--|
| HARDWARE SET 2 - PRIVACY |  |
| 3                        | MORTISE HINGES, STAINLESS                              |
| 1                        | BRUSHED STAINLESS KICK PLATE ON PUSH SIDE              |
| 1                        | PRIVACY LOCK WITH PUSH BUTTON LEVER                    |
| 1                        | CLOSER, OVERHEAD EXPOSED WITH BRUSHED STAINLESS FINISH |

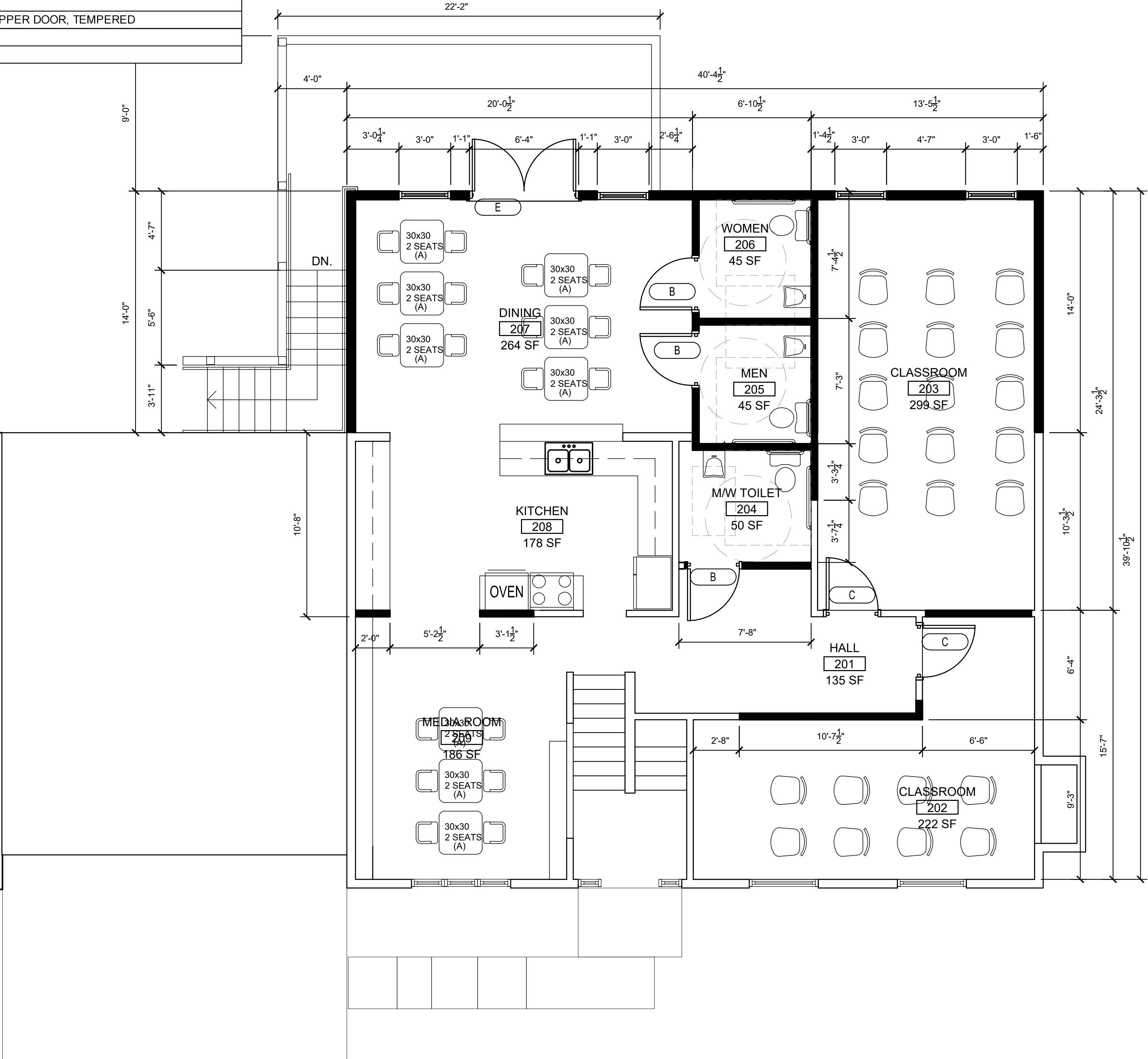
|                            |  |
|----------------------------|--|
| HARDWARE SET 3 - CLASSROOM |  |
| 3                          | MORTISE HINGES, STAINLESS                              |
| 1                          | BRUSHED STAINLESS KICK PLATE ON PUSH SIDE              |
| 1                          | KEYED LEVER ON EXTERIOR, ACTIVE LEVER ON INTERIOR      |
| 1                          | CLOSER, OVERHEAD EXPOSED WITH BRUSHED STAINLESS FINISH |

|                                     |  |
|-------------------------------------|--|
| HARDWARE SET 4 - ENTRY SET OUTSWING |  |
| 6                                   | MORTISE HINGES, STAINLESS                              |
| 2                                   | BRUSHED STAINLESS KICK PLATE ON EXTERIOR               |
| 1                                   | DEADBOLT WITH INTERIOR THUMB TURN ON ACTIVE LEAF       |
| 2                                   | CLOSER, OVERHEAD EXPOSED WITH BRUSHED STAINLESS FINISH |

| ROOM NO. | ROOM NAME      | SQUARE FOOTAGE | OCCUPANCY TYPE PER NFPA 101 (2012) |
|----------|----------------|----------------|------------------------------------|
| 101      | FOYER          | 93             | N/A                                |
| 102      | CLASSROOM      | 284            | EDUCATIONAL                        |
| 103      | GIRLS          | 41             | N/A                                |
| 104      | BOYS           | 41             | N/A                                |
| 105      | CRAFTS         | 88             | EDUCATIONAL                        |
| 106      | CLASSROOM      | 266            | EDUCATIONAL                        |
| 107      | PIANO/MUSIC    | 261            | ACCESSORY ED.                      |
| 108      | LOUNGE         | 52             | ACCESSORY ED.                      |
| 109      | LAUN./MECH.    | 104            | N/A                                |
| 110      | CLASSROOM      | 181            | EDUCATIONAL                        |
| 111      | NURSE          | 91             | ACCESSORY ED.                      |
| 112      | PARENT WAITING | 365            | BUSINESS                           |
| 113      | SCIENCE LAB    | 598            | ACCESSORY ED.                      |
| 201      | HALL           | 135            | N/A                                |
| 202      | CLASSROOM      | 222            | EDUCATIONAL                        |
| 203      | CLASSROOM      | 299            | EDUCATIONAL                        |
| 204      | M/W TOILET     | 50             | N/A                                |
| 205      | MEN            | 45             | N/A                                |
| 206      | WOMEN          | 45             | N/A                                |
| 207      | DINING         | 264            | ACCESSORY ED.                      |
| 208      | KITCHEN        | 178            | ACCESSORY ED.                      |
| 209      | MEDIA ROOM     | 186            | EDUCATIONAL                        |

FINISH SCHEDULE

| Room No. | Room Name      | Floor           | Wall Base | Ceiling | Walls           |
|----------|----------------|-----------------|-----------|---------|-----------------|
| 101      | FOYER          | ENGINEERED WOOD | WOOD      | DRYWALL | PAINTED DRYWALL |
| 102      | CLASSROOM      | VCT             | WOOD      | DRYWALL | PAINTED DRYWALL |
| 103      | GIRLS          | CER. TILE       | CER. TILE | DRYWALL | PAINTED DRYWALL |
| 104      | BOYS           | CER. TILE       | CER. TILE | DRYWALL | PAINTED DRYWALL |
| 105      | CRAFTS         | VCT             | WOOD      | DRYWALL | PAINTED DRYWALL |
| 106      | CLASSROOM      | VCT             | WOOD      | DRYWALL | PAINTED DRYWALL |
| 107      | PIANO/MUSIC    | VCT             | WOOD      | DRYWALL | PAINTED DRYWALL |
| 108      | LOUNGE         | VCT             | WOOD      | DRYWALL | PAINTED DRYWALL |
| 109      | LAUN./MECH.    | VCT             | WOOD      | DRYWALL | PAINTED DRYWALL |
| 110      | CLASSROOM      | VCT             | WOOD      | DRYWALL | PAINTED DRYWALL |
| 111      | NURSE          | VCT             | WOOD      | DRYWALL | PAINTED DRYWALL |
| 112      | PARENT WAITING | ENGINEERED WOOD | WOOD      | DRYWALL | PAINTED DRYWALL |
| 113      | SCIENCE LAB    | VCT             | WOOD      | DRYWALL | PAINTED DRYWALL |
| 201      | HALL           | ENGINEERED WOOD | WOOD      | DRYWALL | PAINTED DRYWALL |
| 202      | CLASSROOM      | VCT             | WOOD      | DRYWALL | PAINTED DRYWALL |
| 203      | CLASSROOM      | VCT             | WOOD      | DRYWALL | PAINTED DRYWALL |
| 204      | M/W TOILET     | CER. TILE       | CER. TILE | DRYWALL | PAINTED DRYWALL |
| 205      | MEN            | CER. TILE       | CER. TILE | DRYWALL | PAINTED DRYWALL |
| 206      | WOMEN          | CER. TILE       | CER. TILE | DRYWALL | PAINTED DRYWALL |
| 207      | DINING         | ENGINEERED WOOD | WOOD      | DRYWALL | PAINTED DRYWALL |
| 208      | KITCHEN        | ENGINEERED WOOD | WOOD      | DRYWALL | PAINTED DRYWALL |
| 209      | MEDIA ROOM     | VCT             | WOOD      | DRYWALL | PAINTED DRYWALL |



1 REMODEL FLOOR PLAN-LEVEL 2  
1/4" = 1'-0"

- EXISTING WALL TO REMAIN
- CONSTRUCTION TO BE DEMOLISHED
- NEW METAL STUD FRAMING @ 16" O.C., TYP. W/ 5/8" DRYWALL. SEE WALLTYPE FOR STUD THICKNESS
- TWO HOUR RATING

HALL  
103  
XXX SF  
G  
A



NORTH

CONSTRUCTION NOTES

- SEE INTERIOR DESIGN DRAWINGS FOR FINISH SELECTIONS AND LAYOUT
- EACH TOILET ROOM SHALL BE LABELED WITH MALE OR FEMALE SYMBOL SIGNAGE. SHALL CONTAIN A FULL HEIGHT, LOUVERED DOOR, AND PUSH-BUTTON LOCKING LEVER HANDLE HARDWARE (PER 2012 IPC, 403.2).

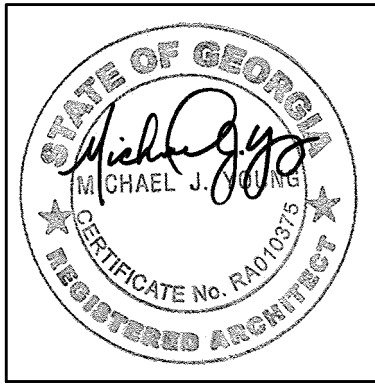
ROOM NAME  
ROOM NUMBER  
SQUARE FOOTAGE  
DOOR DESIGNATION  
WALLTYPE, SEE A1.3 FOR CONSTRUCTION



INTERIORS • ARCHITECTURE  
6600 SUGARLOAF PARKWAY  
SUITE 400-256  
DULUTH, GA 30097  
404.348.4406 OFFICE  
404.602.0023  
www.liquiddesignstudios.com  
info@liquiddesignstudios.com

CONSULTING FIRM

PROFESSIONAL SEAL



1/15/2019  
ARCHITECT OF RECORD:  
MICHAEL J. YOUNG RA 010375

OWNER

APRILE  
THOMAS  
PROJECT  
THE TWINS  
ACADEMY  
ADDITION

3170 PANOLA ROAD  
LITHONIA, GA 30038

PROJ. NUMBER 200638

ISSUE DATE: 1/15/2019

MARK: DATE: DESCRIPTION:

ISSUED FOR  
CONSTRUCTION

SHEET NAME  
LEVEL 2  
FLOOR  
PLAN

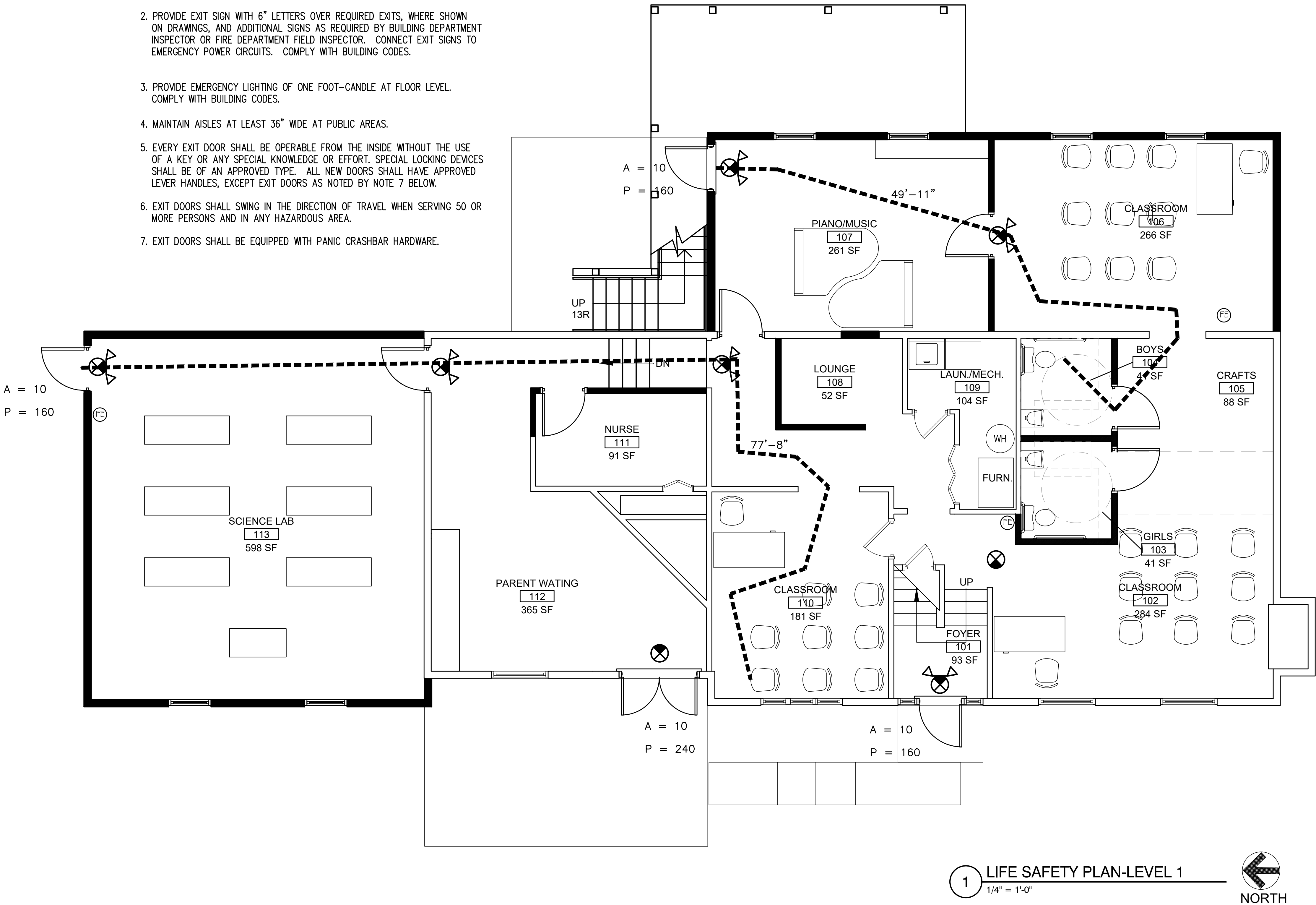
SHEET NUMBER

A1.1

200638  
THE TWINS ACADEMY ADDITION

LIFE SAFETY NOTES

1. PROVIDE A PORTABLE FIRE EXTINGUISHER WITH A RATING OF NOT LESS THAN 2-A WITHIN 75 FOOT TRAVEL DISTANCE TO ALL PORTIONS OF THE BUILDING ON EACH FLOOR, AND ADDITIONAL EXTINGUISHERS AS REQUIRED BY FIRE DEPARTMENT FIELD INSPECTOR OR BUILDING DEPARTMENT INSPECTOR.
2. PROVIDE EXIT SIGN WITH 6" LETTERS OVER REQUIRED EXITS, WHERE SHOWN ON DRAWINGS, AND ADDITIONAL SIGNS AS REQUIRED BY BUILDING DEPARTMENT INSPECTOR OR FIRE DEPARTMENT FIELD INSPECTOR. CONNECT EXIT SIGNS TO EMERGENCY POWER CIRCUITS. COMPLY WITH BUILDING CODES.
3. PROVIDE EMERGENCY LIGHTING OF ONE FOOT-CANDLE AT FLOOR LEVEL. COMPLY WITH BUILDING CODES.
4. MAINTAIN AISLES AT LEAST 36" WIDE AT PUBLIC AREAS.
5. EVERY EXIT DOOR SHALL BE OPERABLE FROM THE INSIDE WITHOUT THE USE OF A KEY OR ANY SPECIAL KNOWLEDGE OR EFFORT. SPECIAL LOCKING DEVICES SHALL BE OF AN APPROVED TYPE. ALL NEW DOORS SHALL HAVE APPROVED LEVER HANDLES, EXCEPT EXIT DOORS AS NOTED BY NOTE 7 BELOW.
6. EXIT DOORS SHALL SWING IN THE DIRECTION OF TRAVEL WHEN SERVING 50 OR MORE PERSONS AND IN ANY HAZARDOUS AREA.
7. EXIT DOORS SHALL BE EQUIPPED WITH PANIC CRASHBAR HARDWARE.



1 LIFE SAFETY PLAN-LEVEL 1  
1/4" = 1'-0"

EXISTING WALL TO REMAIN  
CONSTRUCTION TO BE DEMOLISHED  
NEW METAL STUD FRAMING @ 16" O.C., TYP. W/ 5/8" DRYWALL. SEE WALLTYPE FOR STUD THICKNESS

HALL  
103  
XXX SF

ROOM NAME  
ROOM NUMBER  
SQUARE FOOTAGE

61'-4"  
EXIT TRAVEL PATH WITH EGRESS DISTANCE

A = 35  
P = 240

A = 35  
P = 240

A = ACTUAL OCCUPANTS EXITING THIS LOCATION  
P = POTENTIAL NUMBER OF OCCUPANTS WHO CAN EXIT THIS LOCATION

FE  
10 LB ABC FIRE EXTINGUISHER IN SEMI-RECESSED CABINET EQUAL TO LARSEN MANUFACTURING VERTICAL DUO

X  
NEW EXIT/EMERGENCY LIGHT WITH BATTERY BACKUP

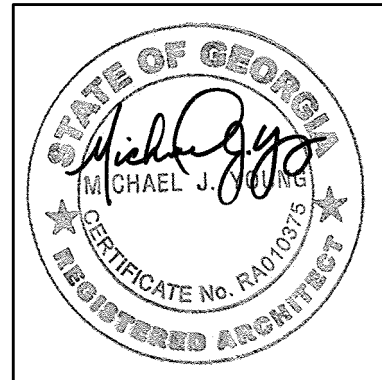
X  
NEW EXIT LIGHT WITH BATTERY BACKUP



INTERIORS • ARCHITECTURE  
6600 SUGARLOAF PARKWAY  
SUITE 400-256  
DULUTH, GA 30097  
404.348.4406 OFFICE  
404.602.0023  
www.liquiddesignstudios.com  
info@liquiddesignstudios.com

CONSULTING FIRM

PROFESSIONAL SEAL



1/15/2019  
ARCHITECT OF RECORD:  
MICHAEL J. YOUNG RA 010375

OWNER

APRILE  
THOMAS  
PROJECT  
THE TWINS  
ACADEMY  
ADDITION

3170 PANOLA ROAD  
LITHONIA, GA 30038

PROJ. NUMBER 200638

| ISSUE DATE: 1/15/2019 |       |              |
|-----------------------|-------|--------------|
| MARK:                 | DATE: | DESCRIPTION: |
|                       |       |              |
|                       |       |              |
|                       |       |              |
|                       |       |              |
|                       |       |              |
|                       |       |              |

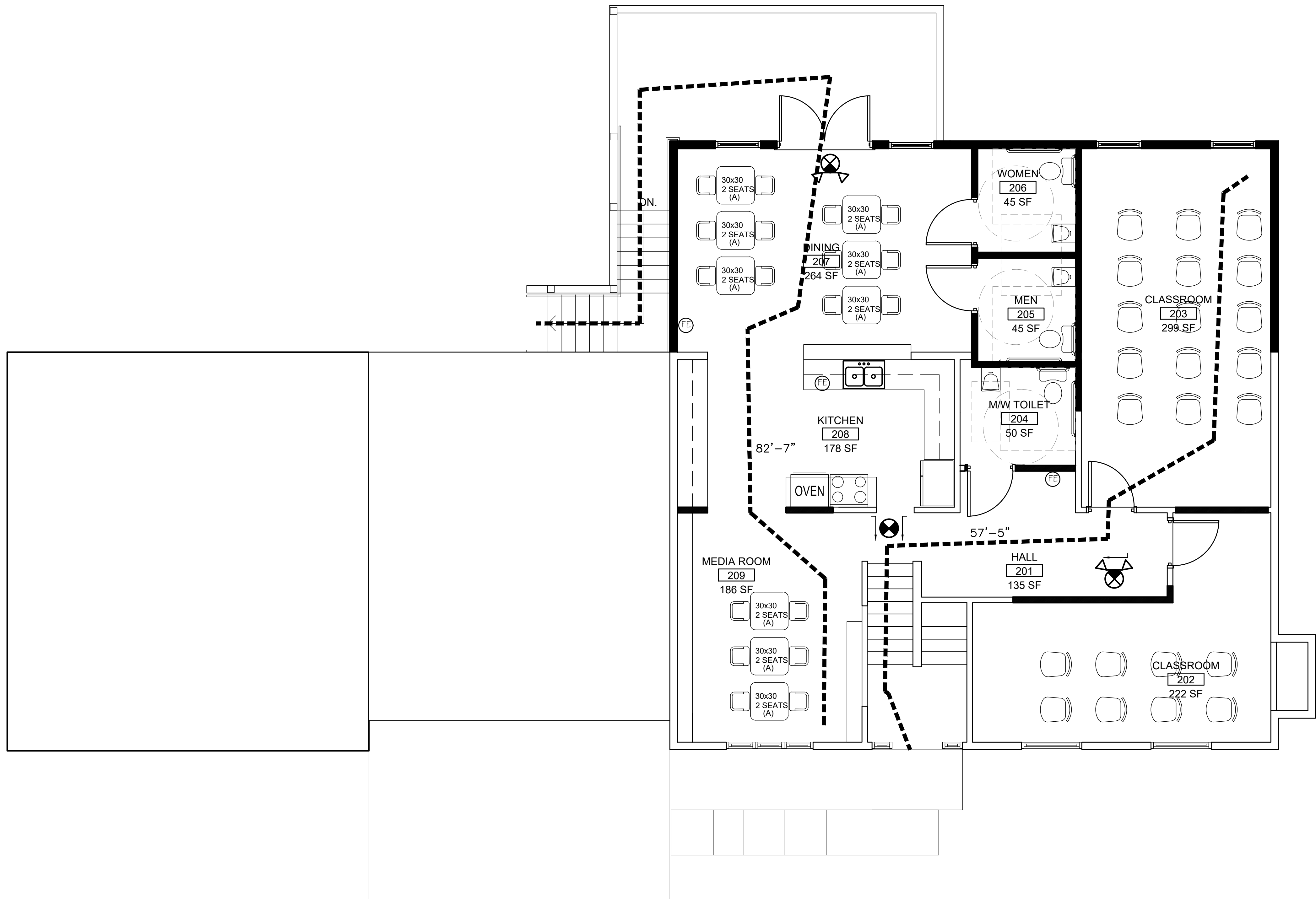
ISSUED FOR  
CONSTRUCTION

SHEET NAME  
LEVEL 1  
LIFE SAFETY  
PLAN

SHEET NUMBER

A2.0





EXISTING WALL TO REMAIN  
CONSTRUCTION TO BE DEMOLISHED  
NEW METAL STUD FRAMING @ 16" O.C., TYP. W/ 5/8" DRYWALL. SEE WALLTYPE FOR STUD THICKNESS

HALL 103  
ROOM NAME  
ROOM NUMBER  
XXX SF

61'-4" EXIT TRAVEL PATH WITH EGRESS DISTANCE

A = 35  
P = 240  
A = ACTUAL OCCUPANTS EXITING THIS LOCATION  
P = POTENTIAL NUMBER OF OCCUPANTS WHO CAN EXIT THIS LOCATION

10 LB ABC FIRE EXTINGUISHER IN SEMI-RECESSED CABINET EQUAL TO LARSEN MANUFACTURING VERTICAL DUO  
NEW EXIT/EMERGENCY LIGHT WITH BATTERY BACKUP  
NEW EXIT LIGHT WITH BATTERY BACKUP

1 LIFE SAFETY PLAN-LEVEL 2  
1/4" = 1'-0"

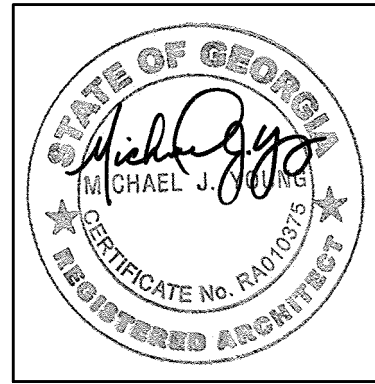
CONSTRUCTION NOTES  
1 SEE INTERIOR DESIGN DRAWINGS FOR FINISH SELECTIONS AND LAYOUT  
2 EACH TOILET ROOM SHALL BE LABELED WITH MALE OR FEMALE SYMBOL SIGNAGE. SHALL CONTAIN A FULL HEIGHT, LOUVERED DOOR, AND PUSH-BUTTON LOCKING LEVER HANDLE HARDWARE (PER 2012 IPC, 403.2).



INTERIORS • ARCHITECTURE  
6600 SUGARLOAF PARKWAY  
SUITE 400-256  
DULUTH, GA 30097  
404.348.4406 OFFICE  
404.602.0023  
www.liquiddesignstudios.com  
info@liquiddesignstudios.com

CONSULTING FIRM

PROFESSIONAL SEAL



1/15/2019  
ARCHITECT OF RECORD:  
MICHAEL J. YOUNG RA 010375

OWNER

APRILE  
THOMAS

PROJECT  
THE TWINS  
ACADEMY  
ADDITION

3170 PANOLA ROAD  
LITHONIA, GA 30038

PROJ. NUMBER 200638

| ISSUE DATE: 1/15/2019 |       |              |
|-----------------------|-------|--------------|
| MARK:                 | DATE: | DESCRIPTION: |
|                       |       |              |
|                       |       |              |
|                       |       |              |
|                       |       |              |
|                       |       |              |
|                       |       |              |

ISSUED FOR  
CONSTRUCTION

SHEET NAME  
LEVEL 2  
LIFE SAFETY  
PLAN

SHEET NUMBER

A2.1

200638

THE TWINS ACADEMY ADDITION





EXISTING ELEVATION (3170)



DEMO ELEVATION (3170)



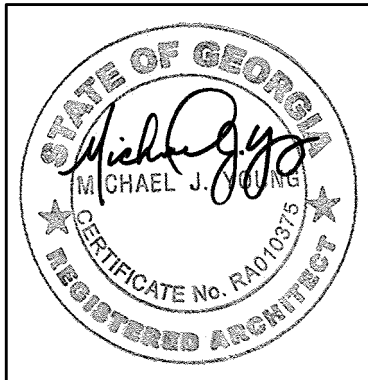
NEW ELEVATION (3170)



INTERIORS • ARCHITECTURE  
6600 SUGARLOAF PARKWAY  
SUITE 400-256  
DULUTH, GA 30097  
404.348.4406 OFFICE  
404.602.0023  
www.liquiddesignstudios.com  
info@liquiddesignstudios.com

CONSULTING FIRM

PROFESSIONAL SEAL



1/15/2019  
ARCHITECT OF RECORD:  
MICHAEL J. YOUNG RA 010375

OWNER

APRILE  
THOMAS

PROJECT  
THE TWINS  
ACADEMY  
ADDITION

3170 PANOLA ROAD  
LITHONIA, GA 30038

PROJ. NUMBER 200638

ISSUE DATE: 1/15/2019

| MARK: | DATE: | DESCRIPTION: |
|-------|-------|--------------|
|       |       |              |
|       |       |              |
|       |       |              |
|       |       |              |
|       |       |              |

ISSUED FOR  
CONSTRUCTION

SHEET NAME  
BUILDING  
ELEVATIONS

SHEET NUMBER

**A3.0**

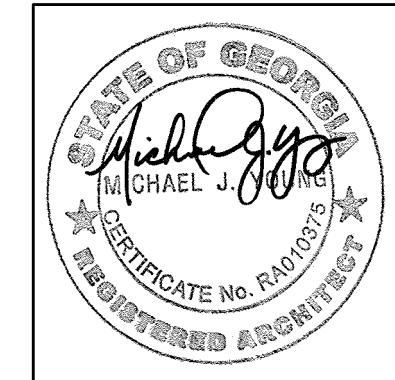




INTERIORS • ARCHITECTURE  
6600 SUGARLOAF PARKWAY  
SUITE 400-256  
DULUTH, GA 30097  
404.348.4406 OFFICE  
404.602.0023  
www.liquiddesignstudios.com  
info@liquiddesignstudios.com

CONSULTING FIRM

PROFESSIONAL SEAL



1/15/2019  
ARCHITECT OF RECORD:  
MICHAEL J. YOUNG RA 010375

OWNER

APRILE  
THOMAS

PROJECT  
THE TWINS  
ACADEMY  
ADDITION

3170 PANOLA ROAD  
LITHONIA, GA 30038

PROJ. NUMBER 200638

ISSUE DATE: 1/15/2019

| MARK: | DATE: | DESCRIPTION: |
|-------|-------|--------------|
|       |       |              |
|       |       |              |
|       |       |              |
|       |       |              |
|       |       |              |

ISSUED FOR  
CONSTRUCTION

SHEET NAME  
BUILDING  
ELEVATIONS

SHEET NUMBER

**A3.1**