



# MASONRY MANAGEMENT

*services*

[www.masonrymanagementservices.com](http://www.masonrymanagementservices.com)



# ABOUT US – MASONRY MANAGEMENT

At Masonry Management, we are dedicated to preserving history, enhancing architecture, and delivering superior craftsmanship in every project we undertake. With years of experience in the restoration, renovation, and construction of masonry structures, we specialize in bringing timeless beauty and durability to churches, historic buildings, and bespoke architectural spaces.

At Masonry Management, we combine traditional techniques with modern innovation to ensure lasting quality. Our team of skilled artisans, designers, and project managers work closely with clients to bring their vision to life, whether through intricate stonework restoration or large-scale structural improvements.

## Why Choose Us?


With a strong reputation for excellence and a passion for masonry, Masonry Management is your trusted partner for exceptional stonework, restoration, and architectural enhancement.

[www.masonrymanagementservices.com](http://www.masonrymanagementservices.com)

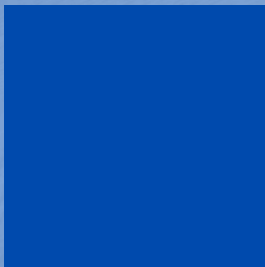


# OUR LADY OF DOLOURS CHURCH, FULHAM ROAD

01

- 
- Stone Repairs: Replacement of indents at the top of columns (materials provided).
  - Window Restoration: Bathstone pre-mix repairs to 3 windows.
  - Scaffolding Installation: Erected for access to repair areas.
  - Quatrefoil External Works: Supply, manufacture, and installation of 4 new Portland stones, including cutting back existing areas for fitting.









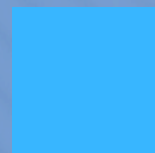


02



ST MARY MAGDALEN


MORTLAKE





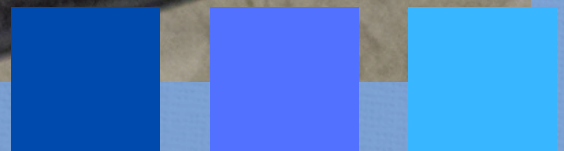






Removal and relocation of key architectural features:

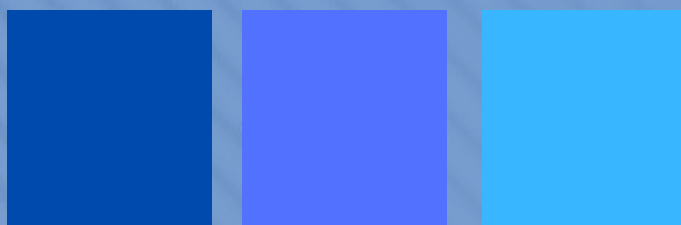
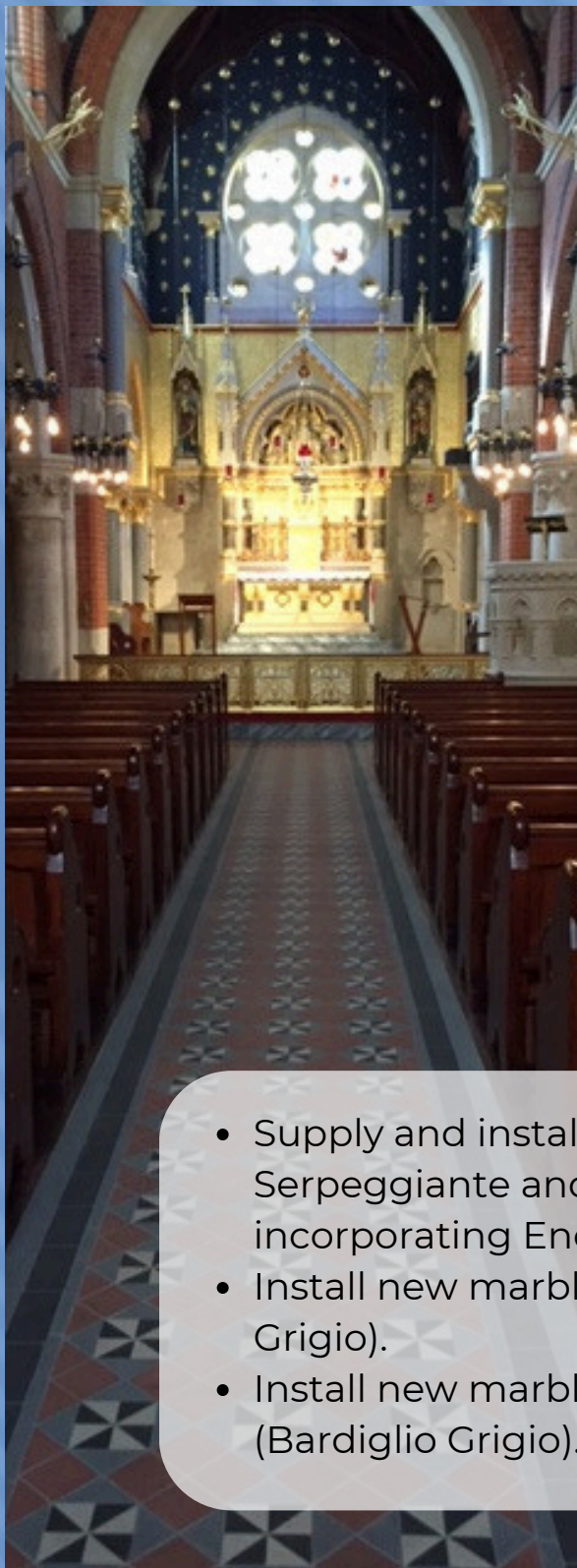
- Pulpit, altar, brass railings, and wooden ambo
- Existing marble steps and risers
- ◆ New installations & refinements:
  - Matching marble paving, borders, and steps
  - A new tabernacle stone frame and reredos shelf
  - A refreshed shrine through careful restoration
- ◆ Design & Materials:
  - Bespoke drawings, surveys, and marble installations
  - Testing, quality benchmarks, and design mock-ups





# 03

## CORPUS CHRISTI MAIDEN LANE

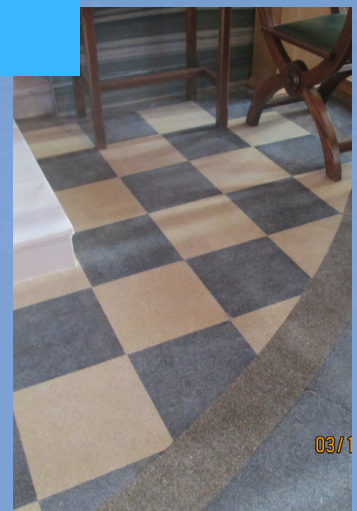


- Supply and install new marble paving using Serpeggiante and Arabescato Grigio, incorporating Encaustic tile feature panels.
- Install new marble steps and risers (Bardiglio Grigio).
- Install new marble borders and edging (Bardiglio Grigio).



04

# OUR LADY OF WILLESDEN







05



- Supply and install new marble carrara marble and black granite paving.
- Manufacture and installation of a new altar

# ST ANSELM & CAECILIA



# CLAPTON, ST SCHOLASTICA

06





