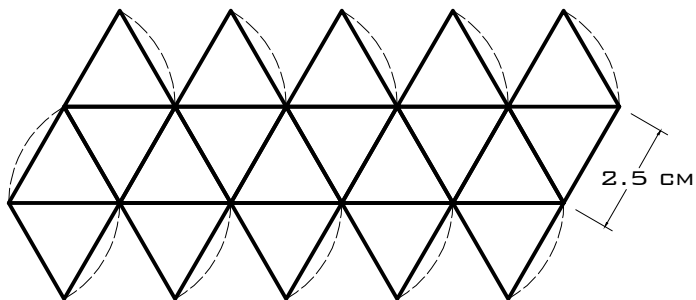
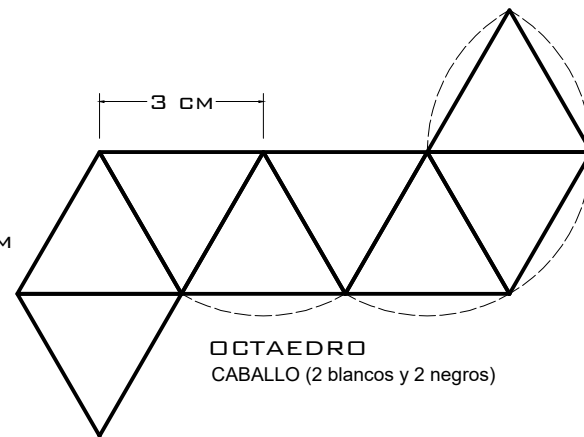


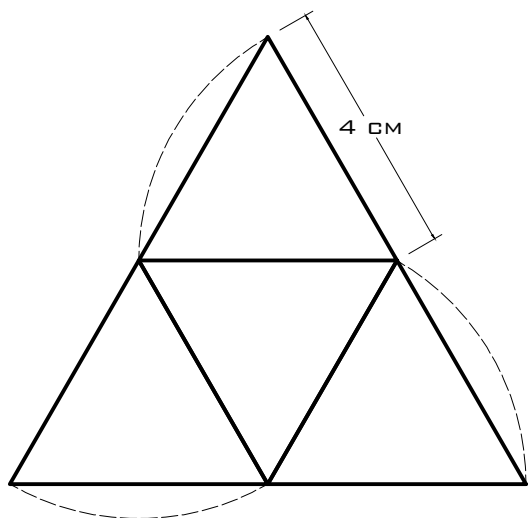
DODECAEDRO
ALFIL (2 blancos y 2 negros)



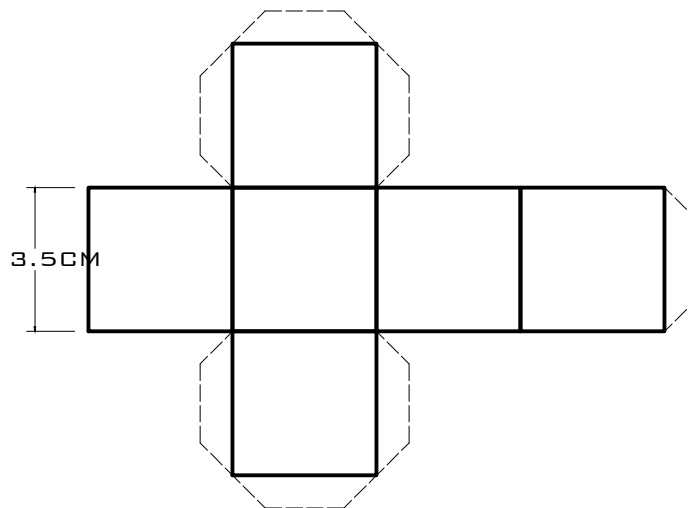
ICOSAEDRO
REINA (1 blanco y 1 negro)



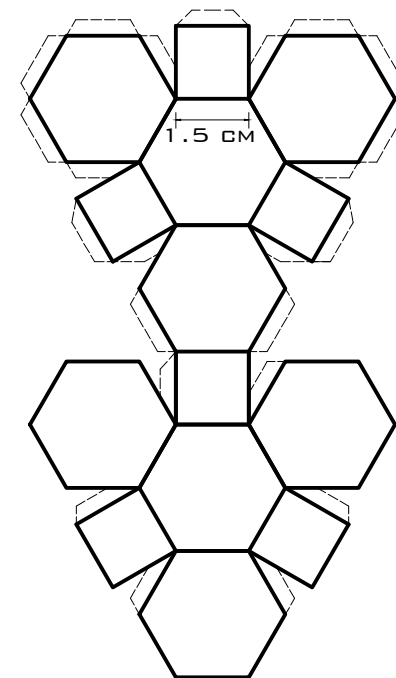
OCTAEDRO
CABALLO (2 blancos y 2 negros)



TETRAEDRO
PEON (8 blancos y 8 negros)



HEXAEDRO
TORRE (2 blancos y 2 negros)



OCTAEDRO TRUNCADO
REY (1 blanco y 1 negro)