

# PERMACON

70  
YEARS



**Landscape  
Products**

2022

# Building memories for 70 years

Since 1952, Permacon has worked hand in hand with customers to create unique exteriors that exceed their wildest dreams.

Offering incredible products of unrivaled quality, Permacon is at the heart of 70 years of experience and professionalism as well as many fond memories.

Warm homes, silent witnesses to all those "first times". Terraces and outdoor kitchens that have hosted countless meals with friends, under moon and sun.

Custom pool layouts, where swimming and sunbathing sessions are the source of small and great joys.

Permacon also represents the promise of an unmatched durability at the centre of many happy moments to come!

A large, bold, white number '70' is centered on a solid red background. The '7' has a thick horizontal top bar and a curved stem that tapers to a point at the bottom. The '0' is a thick, rounded ring with a slight shadow effect on its right side, giving it a three-dimensional appearance.



Imagine your dream outdoor space becoming a reality thanks to our inspirations and product line.



**Alternative Landscaping**  
30

**Slabs**  
34

**Pavers**  
50

**Walls**  
66

**Capping + Steps**  
74

**Mega Steps**  
82

**Curbs**  
87

**Elements**  
90

**Mirage**  
92

**Mega Melville Slab**  
Range Amber Beige  
P 40

**Mondrian Plus 60 Paver Small Rectangle**  
Rockland Black  
P 48



Simply  
take time.



**Mondrian Plus 60 Slab**  
Range Norvick Grey  
P 48

**Melville Plus Capping**  
Rockland Black  
P 79





**Mega Melville Slab**  
Range Scandina Grey  
P 40

**Melville Plus Capping**  
Range Scandina Grey  
P 79



**Mega Melville Slab**  
Range Scandina Grey  
P 40

**Melville 60 Paver Small Rectangle**  
Range Scandina Grey  
P 44





**Mega Melville Slab**  
Range Scandina Grey  
P 40

**Melville Plus Capping**  
Range Scandina Grey  
P 79





**Mondrian Plus 60 Slab**  
Range Amboise Beige  
P 48

**Lafitt Tandem Wall**  
Range Amboise Beige  
P 69



**Melville 60 Slab**  
Range Margaux Beige  
P 44





**Cassara Slab Large Rectangle**  
Range Scandina Grey  
P 36

**Urbano Wall**  
Range Scandina Grey  
P 72



Together, under moon and sun.



**Melville Tandem Wall**  
Range Scandina Grey  
P 70

**Melville 60 Slab**  
Range Scandina Grey  
P 44



**Mega Melville Slab**  
Range Scandina Grey  
P 40





**Artex Panel System**  
Range Shaded Grey  
P 32

**Mega Melville Slab**  
Range Newport Grey  
P 40



A little piece  
of paradise.



**Mega Melville Slab**  
Range Scandina Grey  
P 40

**Lafitt Tandem Wall**  
Range Scandina Grey  
P 69



Every detail matters.



**Melville 80 Paver**  
Range Newport Grey  
P 59

**Mondrian Stone**  
Range Newport Grey  
(see our Stone and Brick brochure)





**Melville 80 Paver Small Rectangle**  
Rockland Black  
P 59



**Vendome 80 Paver**  
Range Margaux Beige | Range Amboise Beige  
P 65



# A welcoming entrance.



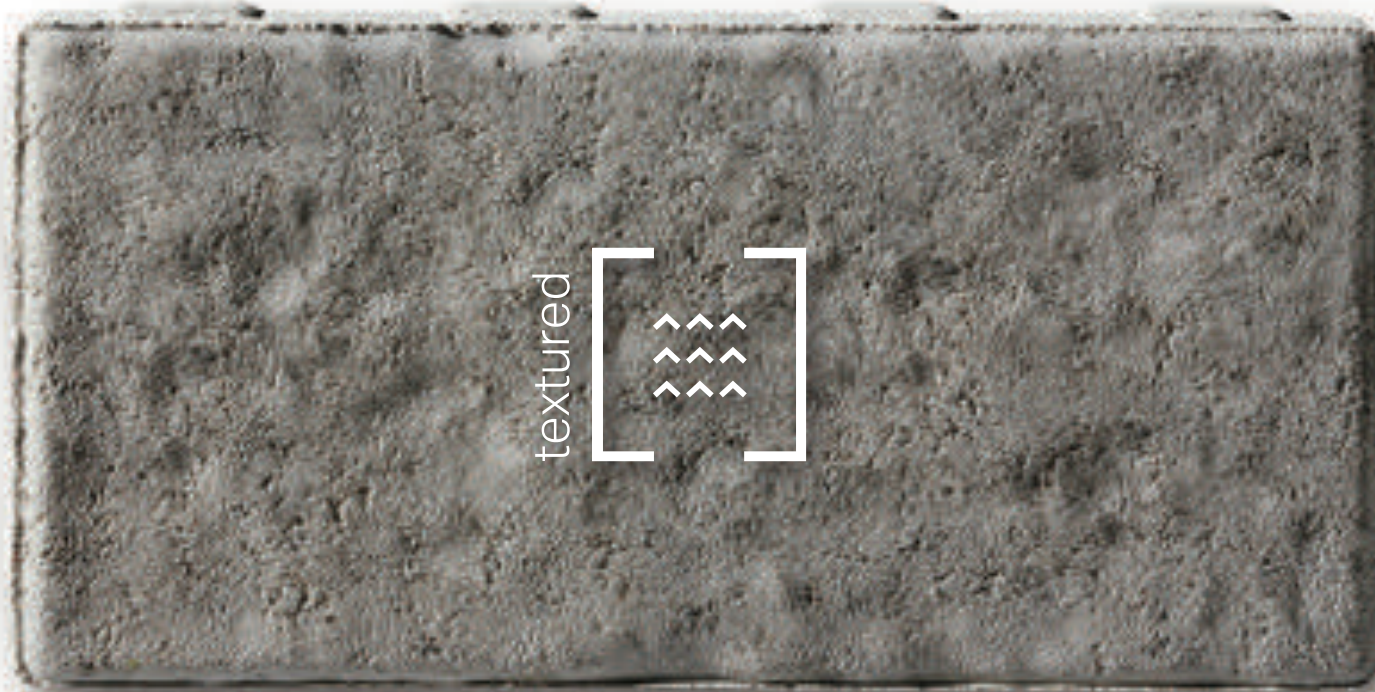
**Melville 80 Paver**  
Range Margaux Beige  
P 59



**Melville 60 Slab**  
Range Chambord Grey  
P 44

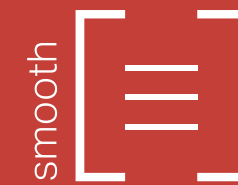
**Melville 60 Paver Small Rectangle**  
Rockland Black  
P 44





**One simple question  
will guide you through  
our two collections:**

**Smooth or textured finish?**



- A timeless look incorporating fine lines
- A natural prestige, vibrant with rich, monochromatic colours
- Straight edges offering a beautiful contemporary touch



- The authentic, classic elegance of cut stone
- The charm and nobility of raw materials
- A variety of subtle, sophisticated tones



# Alternative Landscaping

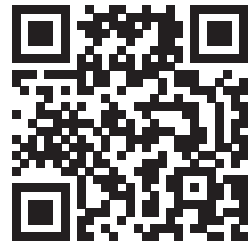
32 Artex Panel System



**Artex Panel System** Range Scandina Grey



Discover a multitude of great ideas!



Artex Panel System Range Scandina Grey



Artex Panel System Range Scandina Grey

### Download the Artex Idea Book

ARTEX modular panels allow you to come up with a multitude of landscape creations, such as a bench, a flower box, a partition, an outdoor fireplace or a green space. The modern design you are looking for!

# Artex Panel System



Artex Panel System Range Shaded Grey | Mega Melville Slab Range Newport Grey - P 40



**Panel 18 x 36**  
76 mm x 457 mm x 914 mm  
3" x 18" x 36"



**Capping 6 x 36**  
76 mm x 152 mm x 914 mm  
3" x 6" x 36"

Range **Amber Beige**



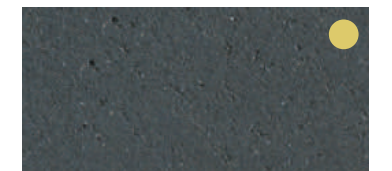
Range **Shaded Grey**



Range **Scandina Grey**



**Rockland Black**



● Colour not available in the panel 18 x 36



# Slabs

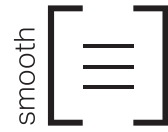
- 36 Cassara
- 37 City
- 38 Esbelto Textureguard
- 39 Lexa
- 40 Mega Melville
- 42 Mega Mondrian Plus
- N 43 Melville 24 x 24
- 44 Melville 60
- 44 Melville 60 Small Rectangle
- 45 Melville 60 Textureguard
- N 46 Metrik
- 47 Mondrian Plus 50
- 48 Mondrian Plus 60
- 48 Mondrian Plus 60 Small Rectangle
- 49 Rosebel



**Melville 60 Slab** Range Scandina Grey - P 44



# Cassara Slab



Cassara Slab Large Rectangle Range Shaded Grey



**Unit A**  
60 mm x 300 mm x 400 mm  
2 3/8" x 11 13/16" x 15 3/4"



**Unit B**  
60 mm x 300 mm x 500 mm  
2 3/8" x 11 13/16" x 19 11/16"

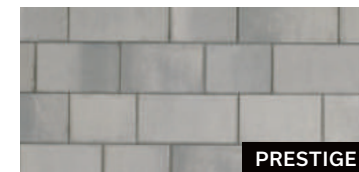


**Unit C**  
60 mm x 300 mm x 600 mm  
2 3/8" x 11 13/16" x 23 5/8"



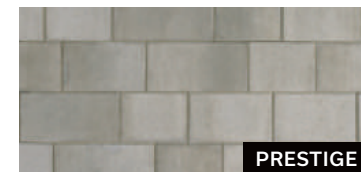
**Large Rectangle**  
60 mm x 300 mm x 700 mm  
2 3/8" x 11 13/16" x 27 9/16"  
(Sold separately)

Range **Scandina Grey**



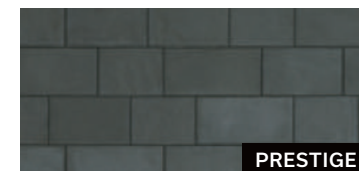
PRESTIGE

Range **Amber Beige**



PRESTIGE

**Rockland Black**



PRESTIGE

Range **Shaded Grey**



# City Slab

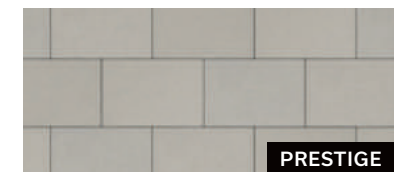


City Slab Sterling Grey



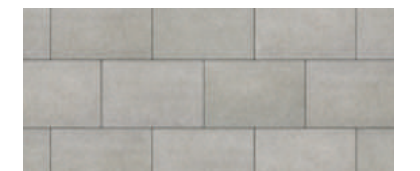
60 mm x 500 mm x 750 mm  
2 3/8" x 19 11/16" x 29 1/2"

**Cameo Beige**

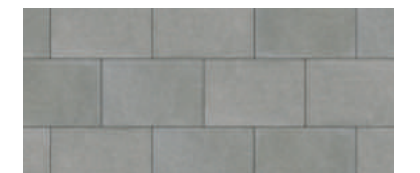


PRESTIGE

**Alpine Grey**




**Sterling Grey**





# Esbelto Textureguard Slab

smooth 



60 mm x 305 mm x 610 mm  
2 3/8" x 12" x 24"

**Hickory**



**Marbella**



**Silverstone**



Esbelto Textureguard Slab Marbella and Hickory



# Lexa Slab

textured 



60 mm x 500 mm x 750 mm  
2 3/8" x 19 11/16" x 29 1/2"



**Alpine Grey**



**Sterling Grey**



Lexa Slab Alpine Grey



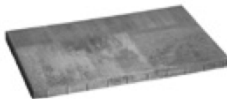


# Mega Melville Slab

smooth 

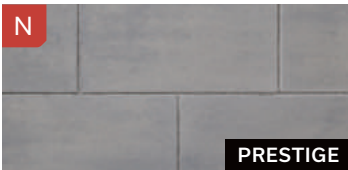


Mega Melville Slab Range Scandina Grey



60 mm x 570 mm x 950 mm  
2 3/8" x 22 7/16" x 37 3/8"

Range Bayona Grey



Range Amber Beige



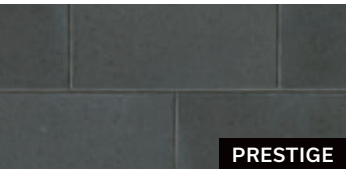
Range Margaux Beige



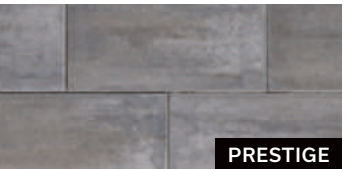
Range Scandina Grey



Rockland Black



Range Chambord Grey



Range Shaded Grey



Range Newport Grey



Mega Melville Slab Range Margaux Beige



# Mega Mondrian Plus Slab

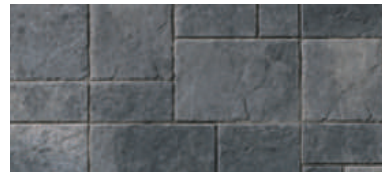


60 mm x 495 mm x 825 mm  
2 3/8" x 19 1/2" x 32 1/2"

Range **Margaux Beige**



Range **Newport Grey**



Range **Norvick Grey**



Mega Mondrian Plus Slab Range Newport Grey

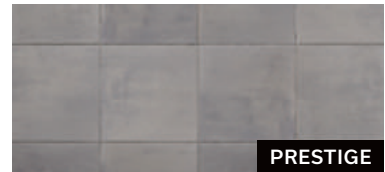


# N Melville 24 x 24 Slab

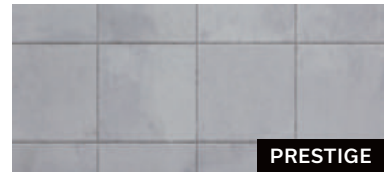


55 mm x 610 mm x 610 mm  
2 3/16" x 24" x 24"

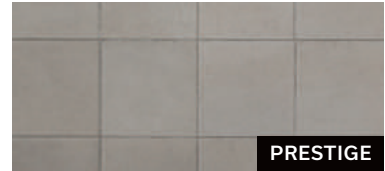
Range **Bayona Grey**



**Blizzard**



Range **Amber Beige**



Melville 24 x 24 Slab Range Bayona Grey





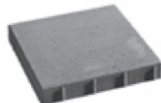
# Melville 60 Slab



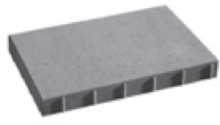
Melville 60 Slab Range Scandinavia Grey | Melville 60 Paver Small Rectangle Rockland Black



**Unit A**  
60 mm x 190 mm x 380 mm  
2 3/8" x 7 1/2" x 15"



**Unit B**  
60 mm x 380 mm x 380 mm  
2 3/8" x 15" x 15"

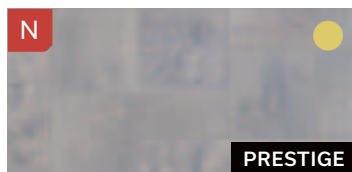


**Unit C**  
60 mm x 380 mm x 570 mm  
2 3/8" x 15" x 22 7/16"



**Small Rectangle**  
60 mm x 190 mm x 380 mm  
2 3/8" x 7 1/2" x 15"  
(Sold separately)

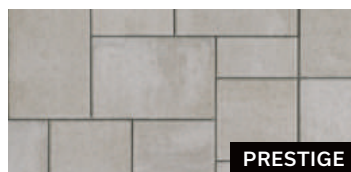
Range **Bayona Grey**



Range **Margaux Beige**



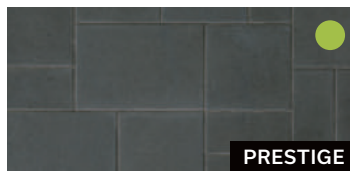
Range **Amber Beige**



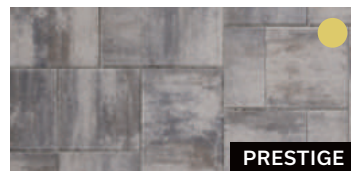
Range **Scandinavia Grey**



**Rockland Black**



Range **Chambord Grey**



Range **Newport Grey**



Range **Shaded Grey**



- Colours not available in Melville 60 Paver Small Rectangle
- Colour available in Melville 60 Paver Small Rectangle only

# Melville 60 Textureguard Slab



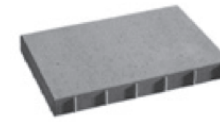
Melville 60 Textureguard Slab Silverstone



**Unit A**  
60 mm x 190 mm x 380 mm  
2 3/8" x 7 1/2" x 15"



**Unit B**  
60 mm x 380 mm x 380 mm  
2 3/8" x 15" x 15"



**Unit C**  
60 mm x 380 mm x 570 mm  
2 3/8" x 15" x 22 7/16"

**Marbella**



**Silverstone**



**Hickory**





**N** **Metrik Slab**



**Metrik Slab** Range Bayona Grey

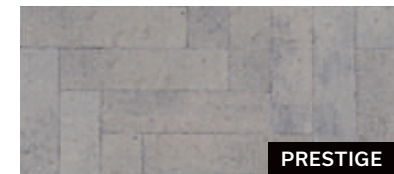


smooth

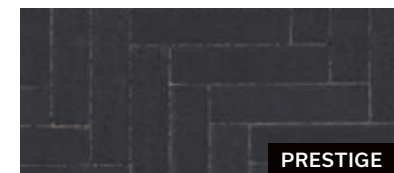


60 mm x 70 mm x 280 mm  
2 3/8" x 2 3/4" x 11"

Range **Bayona Grey**



**Rockland Black**



**Blizzard**



**Mondrian Plus 50 Slab**



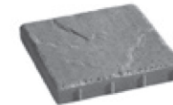
**Mondrian Plus 50 Slab** Range Margaux Beige



textured



**Unit A**  
50 mm x 190 mm x 380 mm  
2" x 7 1/2" x 15"



**Unit B**  
50 mm x 380 mm x 380 mm  
2" x 15" x 15"

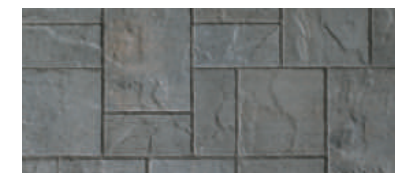


**Unit C**  
50 mm x 380 mm x 570 mm  
2" x 15" x 22 7/16"

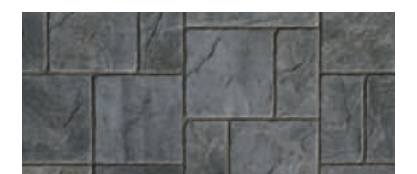
Range **Margaux Beige**



Range **Norvick Grey**



Range **Newport Grey**





# Mondrian Plus 60 Slab



Mondrian Plus 60 Slab Range Amboise Beige



**Unit A**  
60 mm x 165 mm x 330 mm  
2 3/8" x 6 1/2" x 13"



**Small Rectangle**  
60 mm x 165 mm x 330 mm  
2 3/8" x 6 1/2" x 13"  
(Sold separately)



**Unit B**  
60 mm x 330 mm x 330 mm  
2 3/8" x 13" x 13"



**Unit C**  
60 mm x 330 mm x 495 mm  
2 3/8" x 13" x 19 1/2"

Range **Margaux Beige**



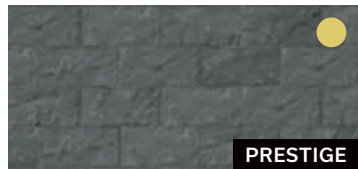
Range **Amboise Beige**



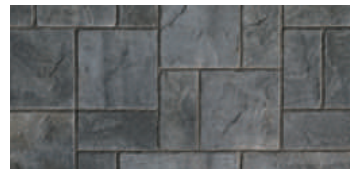
Range **Scandina Grey**



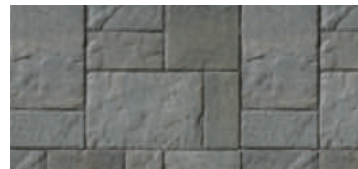
Range **Rockland Black**



Range **Newport Grey**



Range **Norvick Grey**



● Colour available in Mondrian Plus 60 Paver Small Rectangle only

# Rosebel Slab



Rosebel Slab Range Amboise Beige



**Unit A**  
60 mm x 389 mm x 560 mm  
2 3/8" x 15 5/16" x 22"



**Unit B**  
60 mm x 389 mm x 756 mm  
2 3/8" x 15 5/16" x 29 3/4"

Range **Margaux Beige**



Range **Amboise Beige**



Range **Newport Grey**



Range **Norvick Grey**





# Pavers

- 52 Cassara
- 53 Cassara Verde
- 54 Esbelto Textureguard
- 55 Kensington Smooth
- 56 Kensington
- 57 Lexa
- 58 Mega Melville
- 59 Melville 80
- 59 Melville 80 Small Rectangle

- 60 Melville 80 Textureguard
- 61 Melville Aqua
- 62 Melville Plank
- 63 Mondrian Plus 80
- 63 Mondrian Plus 80 Small Rectangle
- 64 Trafalgar 60
- 65 Vendome 60
- 65 Vendome 80



**Mega Melville Paver** Range Margaux Beige - P 58



# Cassara Paver



Cassara Paver Large Rectangle Range Shaded Grey



**Unit A**  
100 mm x 300 mm x 400 mm  
4" x 11 13/16" x 15 3/4"



**Large Rectangle**  
100 mm x 300 mm x 700 mm  
4" x 11 13/16" x 27 9/16"  
(Sold separately)



**Unit B**  
100 mm x 300 mm x 500 mm  
4" x 11 13/16" x 19 11/16"



**Unit C**  
100 mm x 300 mm x 600 mm  
4" x 11 13/16" x 23 5/8"

Range **Amber Beige**



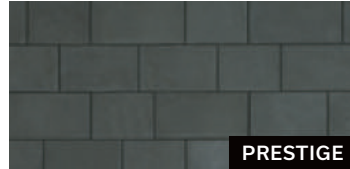
PRESTIGE

Range **Scandina Grey**



PRESTIGE

Range **Rockland Black**



PRESTIGE

Range **Shaded Grey**



# Cassara Verde Paver



100 mm x 300 mm x 450 mm  
4" x 11 13/16" x 17 3/4"

Cassara Verde Paver Range Shaded Grey



Range **Shaded Grey**





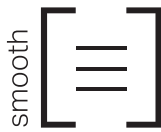
# Esbelto Textureguard Paver



Esbelto Textureguard Paver Hickory



80 mm x 305 mm x 610 mm  
3 1/8" x 12" x 24"



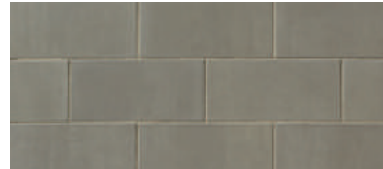
**Marbella**



**Silverstone**



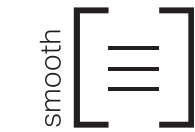
**Hickory**



# Kensington Smooth Paver



Kensington Smooth Paver Ash Grey Blend



**Large Rectangle**  
80 mm x 279 mm x 419 mm  
3.15" x 10.98" x 16.50"



**Square**  
80 mm x 279 mm x 279 mm  
3.15" x 10.98" x 10.98"



**Small Rectangle**  
80 mm x 139 mm x 279 mm  
3.15" x 5.47" x 10.98"



**Rectangle**  
80 mm x 209 mm x 279 mm  
3.15" x 8.23" x 10.98"  
(Sold separately)

**Granite Grey Blend**



**Ash Grey Blend**



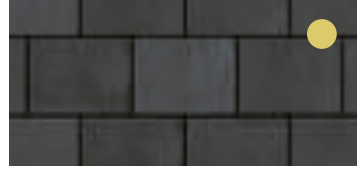
**Canyon Grey Blend**



**Desert Grey Blend**



**Sierra Black**



Sold in a Mixed Bundle (Large Rectangle, Square and Small Rectangle combined) suitable for mechanical installation.

● Colour available in Kensington Smooth Paver Rectangle only



# Kensington Paver



Kensington Paver Ash Grey Blend, Sierra Black insert



**Large Rectangle**  
80 mm x 279 mm x 419 mm  
3.15" x 10.98" x 16.50"



**Square**  
80 mm x 279 mm x 279 mm  
3.15" x 10.98" x 10.98"



**Small Rectangle**  
80 mm x 139 mm x 279 mm  
3.15" x 5.47" x 10.98"



**Rectangle**  
80 mm x 209 mm x 279 mm  
3.15" x 8.23" x 10.98"  
(Sold separately)

**Granite Grey Blend**



**Ash Grey Blend**



**Canyon Grey Blend**



**Desert Grey Blend**



**Sierra Black**



Sold in a Mixed Bundle (Large Rectangle, Square and Small Rectangle combined) suitable for mechanical installation.

● Colour available in Kensington Paver Rectangle only

# Lexa Paver

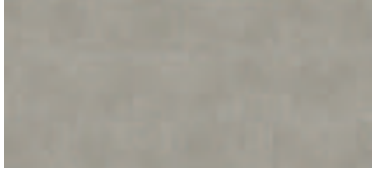


Lexa Paver Sterling Grey



80 mm x 330 mm x 495 mm  
3 1/8" x 13" x 19 1/2"

**Alpine Grey**



**Sterling Grey**





# Mega Melville Paver



Mega Melville Paver Range Scandina Grey



80 mm x 570 mm x 950 mm  
3 1/8" x 22 7/16" x 37 3/8"

<p>Range <b>Bayona Grey</b></p> <p>PRESTIGE</p>	<p>Range <b>Margaux Beige</b></p> <p>PRESTIGE</p>	<p>Range <b>Amber Beige</b></p> <p>PRESTIGE</p>
<p>Range <b>Scandina Grey</b></p> <p>PRESTIGE</p>	<p>Range <b>Rockland Black</b></p> <p>PRESTIGE</p>	<p>Range <b>Chambord Grey</b></p> <p>PRESTIGE</p>
<p>Range <b>Newport Grey</b></p>	<p>Range <b>Shaded Grey</b></p>	

# Melville 80 Paver



Melville 80 Paver Range Margaux Beige



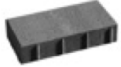
**Unit A**  
80 mm x 190 mm x 380 mm  
3 1/8" x 7 1/2" x 15"



**Unit B**  
80 mm x 380 mm x 380 mm  
3 1/8" x 15" x 15"



**Unit C**  
80 mm x 380 mm x 570 mm  
3 1/8" x 15" x 22 7/16"



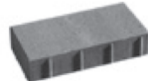
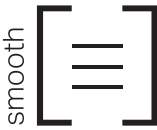
**Small Rectangle**  
80 mm x 190 mm x 380 mm  
3 1/8" x 7 1/2" x 15"  
(Sold separately)

<p>Range <b>Bayona Grey</b></p> <p>PRESTIGE</p>	<p>Range <b>Margaux Beige</b></p> <p>PRESTIGE</p>	<p>Range <b>Amber Beige</b></p> <p>PRESTIGE</p>
<p>Range <b>Scandina Grey</b></p> <p>PRESTIGE</p>	<p>Range <b>Rockland Black</b></p> <p>PRESTIGE</p>	<p>Range <b>Chambord Grey</b></p> <p>PRESTIGE</p>
<p>Range <b>Newport Grey</b></p>	<p>Range <b>Shaded Grey</b></p>	

● Colours not available in Melville 80 Paver Small Rectangle  
● Colour available in Melville 80 Paver Small Rectangle only



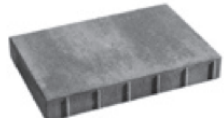
# Melville 80 Textureguard Paver



**Unit A**  
80 mm x 190 mm x 380 mm  
3 1/8" x 7 1/2" x 15"

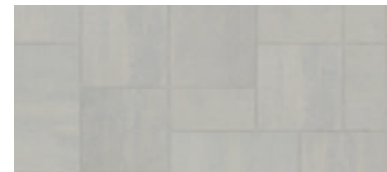


**Unit B**  
80 mm x 380 mm x 380 mm  
3 1/8" x 15" x 15"



**Unit C**  
80 mm x 380 mm x 570 mm  
3 1/8" x 15" x 22 7/16"

**Marbella**



**Silverstone**



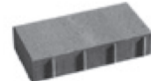
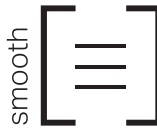
**Hickory**



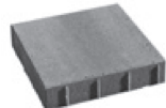
Melville 80 Textureguard Paver Hickory



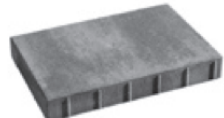
# Melville Aqua Paver



**Unit A**  
80 mm x 190 mm x 380 mm  
3 1/8" x 7 1/2" x 15"

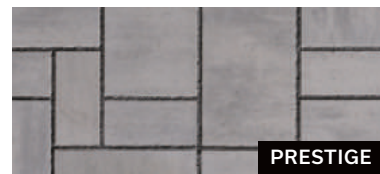


**Unit B**  
80 mm x 380 mm x 380 mm  
3 1/8" x 15" x 15"



**Unit C**  
80 mm x 380 mm x 570 mm  
3 1/8" x 15" x 22 7/16"

**Range Scandina Grey**



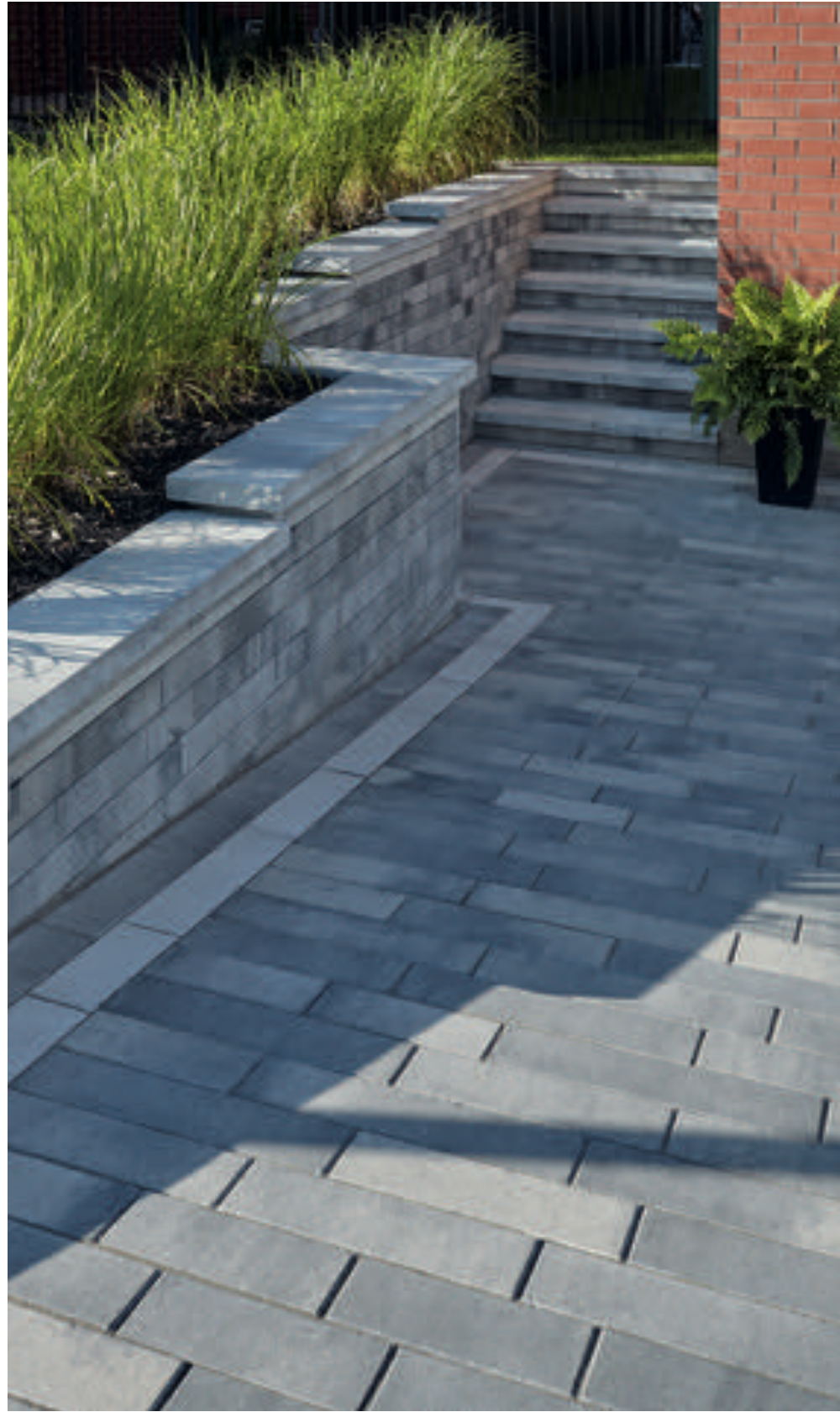
PRESTIGE

Melville Aqua Paver Range Scandina Grey





# Melville Plank Paver



Melville Plank Paver Range Newport Grey



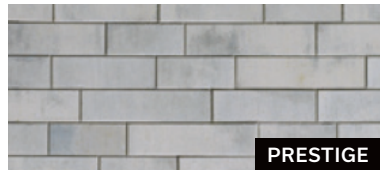
**SLIM - Units A, B and C**  
80 mm x 127 mm x 300 mm - 500 mm  
3 1/8" x 5" x 11 13/16" - 19 11/16"



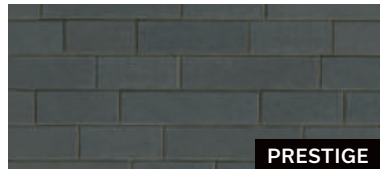
**LARGE - Units A, B and C**  
80 mm x 190 mm x 300 - 500 mm  
3 1/8" x 7 1/2" x 11 13/16" - 19 11/16"

Visit [permacon.ca](http://permacon.ca) for all available sizes.

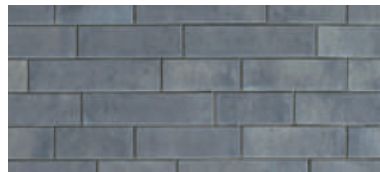
Range **Scandina Grey**



**Rockland Black**



Range **Newport Grey**



# Mondrian Plus 80 Paver



Mondrian Plus 80 Paver Range Margaux Beige



**Unit A**  
80 mm x 165 mm x 330 mm  
3 1/8" x 6 1/2" x 13"



**Small Rectangle**  
80 mm x 165 mm x 330 mm  
3 1/8" x 6 1/2" x 13"  
(Sold separately)



**Unit B**  
80 mm x 330 mm x 330 mm  
3 1/8" x 13" x 13"



**Unit C**  
80 mm x 330 mm x 495 mm  
3 1/8" x 13" x 19 1/2"

Range **Margaux Beige**



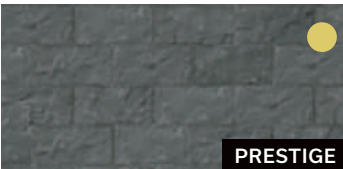
Range **Amboise Beige**



Range **Scandina Grey**



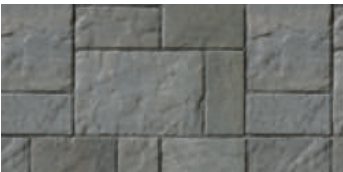
**Rockland Black**



Range **Newport Grey**



Range **Norvick Grey**



● Colour available in Mondrian Plus 80 Paver Small Rectangle only



# Trafalgar 60 Paver



Trafalgar 60 Paver Range Margaux Beige



**Unit A**  
60 mm x 100 mm x 200 mm  
2 3/8" x 3 15/16" x 7 7/8"



**Large Square**  
60 mm x 300 mm x 300 mm  
2 3/8" x 11 13/16" x 11 13/16"  
(Sold separately)

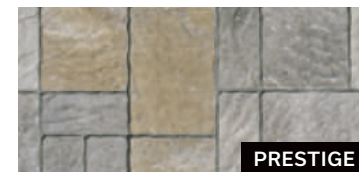


**Unit B**  
60 mm x 200 mm x 200 mm  
2 3/8" x 7 7/8" x 7 7/8"



**Unit C**  
60 mm x 200 mm x 300 mm  
2 3/8" x 7 7/8" x 11 13/16"

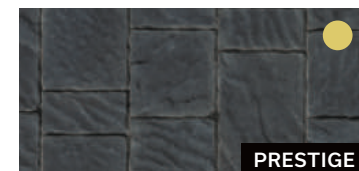
Range **Margaux Beige**



Range **Amboise Beige**



**Rockland Black**



Range **Newport Grey**



Range **Norvick Grey**



● Colour available in Trafalgar 60 Paver Large Square only

# Vendome 60 and 80 Paver



Vendome 80 Paver Range Amboise Beige



**80 - Unit A**  
80 mm x 130 mm x 197 mm  
3 1/8" x 5 1/8" x 7 3/4"



**60 - Unit A**  
60 mm x 130 mm x 197 mm  
2 3/8" x 5 1/8" x 7 3/4"



**80 - Unit B**  
80 mm x 130 mm x 262 mm  
3 1/8" x 5 1/8" x 10 5/16"



**60 - Unit B**  
60 mm x 130 mm x 262 mm  
2 3/8" x 5 1/8" x 10 5/16"

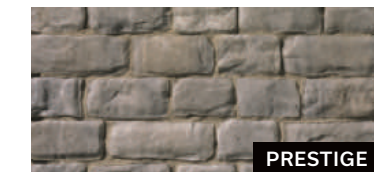


**80 - Unit C**  
80 mm x 130 mm x 327 mm  
3 1/8" x 5 1/8" x 12 7/8"



**60 - Unit C**  
60 mm x 130 mm x 327 mm  
2 3/8" x 5 1/8" x 12 7/8"

Range **Margaux Beige**



Range **Amboise Beige**



**Rockland Black**



Range **Newport Grey**



● Colour not available in Vendome 60 Paver

Vendome 60 Pavers are not vehicular.



# Walls

68 Grande and Grande Wedge  
69 Lafitt Tandem  
70 Melville Tandem  
71 RB

72 Urbano  
73 Wallstone  
73 Wedgestone



**Lafitt Tandem Wall** Range Newport Grey, Range Margaux Beige insert - P 69



# Grande and Grande Wedge Wall



Grande Wall Grey

## GRANDE



**375 Standard**  
200 mm x 375 mm x 1000 mm  
7.87" x 14.76" x 39.37"



**1125 Standard**  
200 mm x 1125 mm x 1000 mm  
7.87" x 44.29" x 39.37"



**750 Standard**  
200 mm x 750 mm x 1000 mm  
7.87" x 29.52" x 39.37"



**175 Step**  
175 mm x 438 mm x 1000 mm  
6.89" x 17.24" x 39.37"



**Corner unit**  
200 mm x 500 mm x 1000 mm  
7.87" x 19.69" x 39.37"



**438 Coping**  
200 mm x 438 mm x 1000 mm  
7.87" x 17.24" x 39.37"

## GRANDE WEDGE



**Standard**  
200 mm x 312.5 mm x 380 mm/250 mm  
7.87" x 12.30" x 14.96"/9.84"

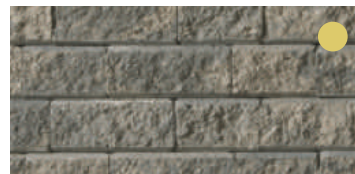


**Coping**  
100 mm x 312.5 mm x 380 mm/250 mm  
3.93" x 12.30" x 14.96"/9.84"

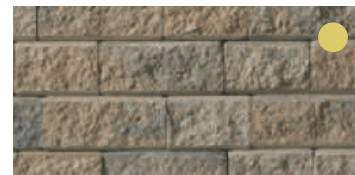
## Onyx Brown Blend



## Granite Blend



## Desert Grey Blend



## Grey

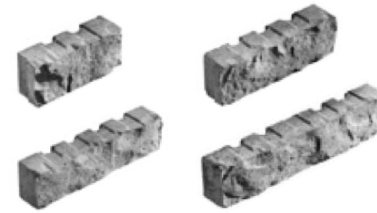


Available in 438 Coping and 175 Step only.  
Custom colours available - call for details.

# Lafitt Tandem Wall



Lafitt Tandem Wall Range Amboise Beige



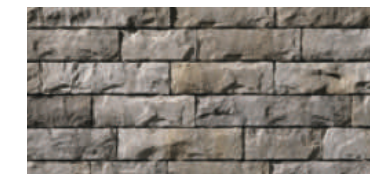
**90 - Unit A, B, C and D**  
90 mm x 67 mm x 201 mm - 402 mm  
3 9/16" x 2 5/8" x 7 7/8" - 15 13/16"



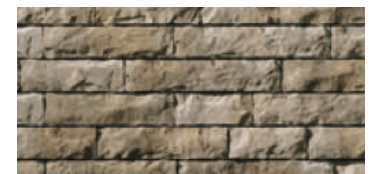
**180 - Unit E, F and G**  
180 mm x 67 mm x 335 mm - 469 mm  
7 1/16" x 2 5/8" x 13 3/16" - 18 1/2"

Visit [permacon.ca](http://permacon.ca) for all available sizes.

## Range Margaux Beige



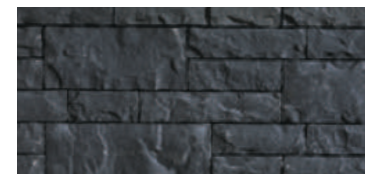
## Range Amboise Beige



## Range Scandina Grey



## Rockland Black



## Range Newport Grey





# Melville Tandem Wall



Melville Tandem Wall Range Scandina Grey



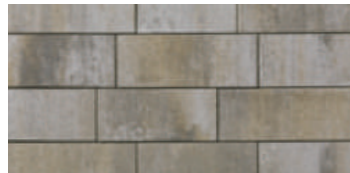
**90 - Unit A, B, C and D**  
90 mm x 67 mm x 201 mm - 402 mm  
3 9/16" x 2 5/8" x 7 7/8" - 15 13/16"



**180 - Unit E, F and G**  
180 mm x 67 mm x 335 mm - 469 mm  
7 1/16" x 2 5/8" x 13 3/16" - 18 1/2"

Visit [permacon.ca](http://permacon.ca) for all available sizes.

Range **Margaux Beige**



Range **Amber Beige**



Range **Shaded Grey**



Range **Scandina Grey**



**Rockland Black**



Range **Newport Grey**



# RB Wall



RB Wall Granite Blend



**Regular unit**  
150 mm x 300 mm x 200 mm  
5.91" x 11.81" x 7.87"  
(Sold separately)



**Corner**  
150 mm x 300 mm x 200 mm  
5.91" x 11.81" x 7.87"  
(Sold separately)



**Capping**  
75 mm x 300 mm x 610 mm  
2.95" x 11.81" x 24.02"  
(Sold separately)

**Sierra Black**



**Granite Blend**



**Natural**




**Desert Grey Blend**





# Urbano Wall

smooth 



**Unit A**  
120 mm x 201 mm x 335 mm  
4 3/4" x 7 15/16" x 13 3/16"



**Unit B**  
120 mm x 201 mm x 402 mm  
4 3/4" x 7 15/16" x 15 13/16"

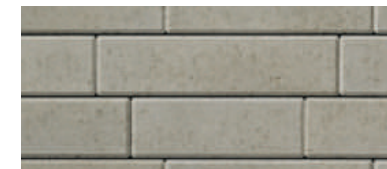


**Unit C**  
120 mm x 201 mm x 469 mm  
4 3/4" x 7 15/16" x 18 1/2"

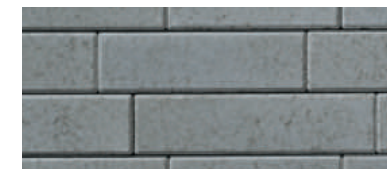
Range **Scandina Grey**



Range **Amber Beige**



Range **Shaded Grey**



Urbano Wall Range Scandina Grey

# Wallstone Wall

textured 



**Granite Blend**



**Desert Grey Blend**



Wallstone Wall Granite Blend



**Standard unit**  
100 mm x 200 mm x 300 mm  
3.93" x 7.87" x 11.81"



**Corner/Column unit**  
100 mm x 200 mm x 300 mm  
3.93" x 7.87" x 11.81"



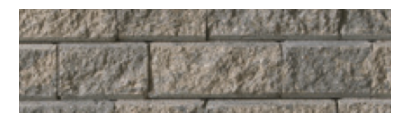
**12 in. Capping**  
100 mm x 200 mm x 300 mm  
3.93" x 7.87" x 11.81"

# Wedgestone Wall

textured 



**Granite Blend**



**Desert Grey Blend**



Wedgestone Wall Desert Grey Blend



**Standard unit**  
100 mm x 200 mm x 231 mm/153 mm  
3.93" x 7.87" x 9.09"/6.02"



**Capping unit**  
100 mm x 200 mm x 231 mm/153 mm  
3.93" x 7.87" x 9.09"/6.02"



# Capping + Steps

## Capping

- 76 Lafitt Plus
- 78 Laguna
- 78 Marina
- 79 Melville Plus
- 81 Mondrian Plus

## Steps

- 77 Lafitt Plus
- 80 Melville Plus 60 and 90



**Melville Plus Step** Rockland Black - P 80



# Lafitt Plus Capping



Lafitt Plus Capping Range Margaux Beige



90 mm x 305 mm x 400 mm  
3 9/16" x 12" x 15 3/4"

Range **Margaux Beige**



Range **Amboise Beige**



Range **Scandina Grey**



**Rockland Black**



Range **Newport Grey**



# Lafitt Plus Step



Lafitt Plus Step Rockland Black



90 mm x 400 mm x 400 mm  
3 9/16" x 15 3/4" x 15 3/4"

Range **Margaux Beige**



Range **Newport Grey**



Range **Scandina Grey**

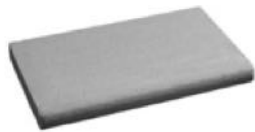
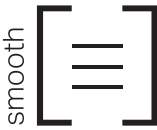


**Rockland Black**





# Laguna Pool Coping



60 mm x 360 mm x 610 mm  
2 3/8" x 14 3/16" x 24"

**Sterling Grey**

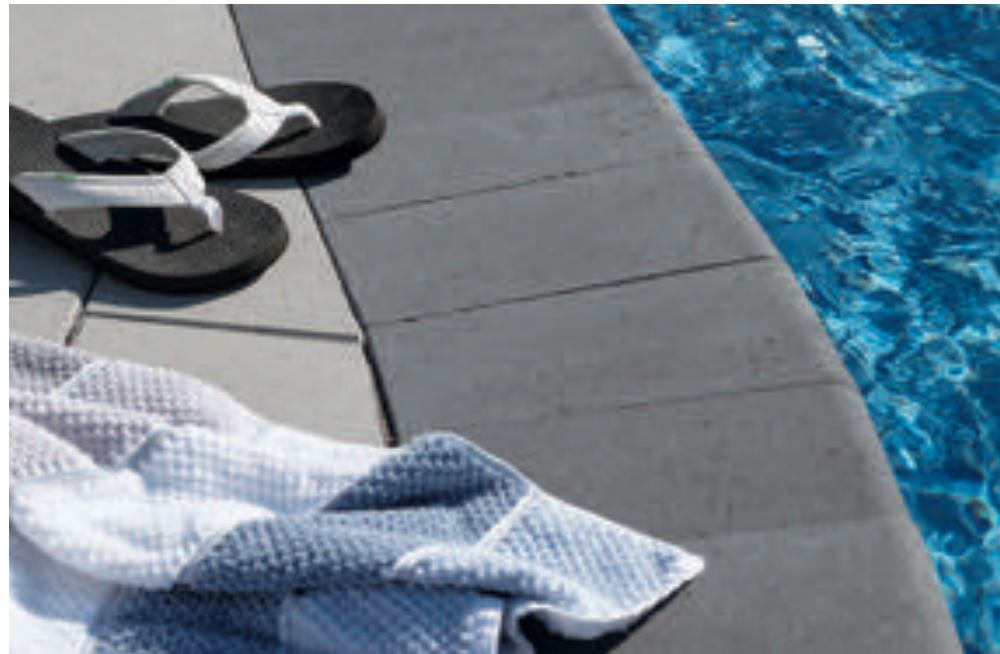
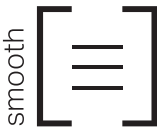


**Alpine Grey**



Laguna Pool Coping Alpine Grey

# Marina Coping



60 mm x 150 mm x 300 mm  
2 3/8" x 5 15/16" x 11 13/16"

**Rockland Black**



**Range Norvick Grey**



Marina Coping Rockland Black

# Melville Plus Capping



Melville Plus Capping Range Scandina Grey



60 mm x 305 mm x 600 mm  
2 3/8" x 12" x 23 5/8"

**Range Amber Beige**



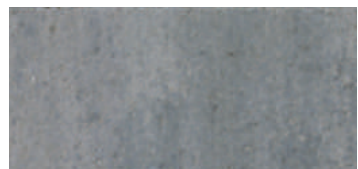
**Range Margaux Beige**



**Range Newport Grey**



**Range Shaded Grey**



**Range Scandina Grey**



**Rockland Black**

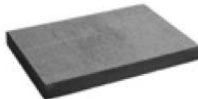




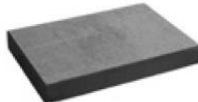
# Melville Plus 60 and 90 Steps



Melville Plus 90 Step Rockland Black | Melville Tandem Wall Range Scandina Grey - P 70



**Unit 60**  
60 mm x 400 mm x 600 mm  
2 3/8" x 15 3/4" x 23 5/8"  
(Sold separately)



**Unit 90**  
90 mm x 400 mm x 600 mm  
3 9/16" x 15 3/4" x 23 5/8"  
(Sold separately)

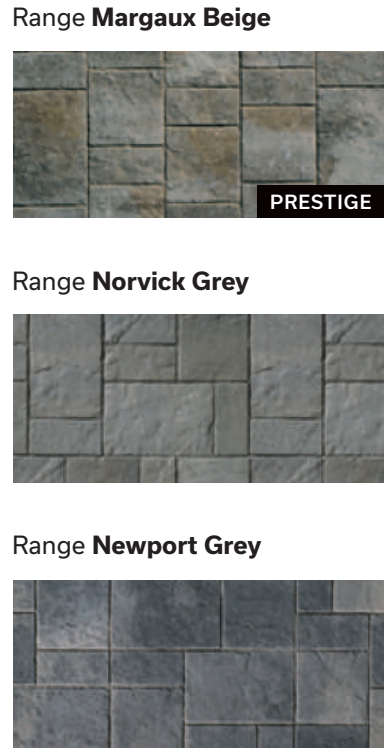


● Colours not available in Melville Plus 60 Step

# Mondrian Plus Capping



50 mm x 406 mm x 375 mm  
2" x 16" x 14 3/4"



Mondrian Plus Capping Range Norvick Grey | Mondrian Plus 50 Slab Range Norvick Grey - P 47



# Mega Steps

- 84 Mega Lafitt Plus
- 85 Mega Melville Plus
- 86 Valentia



**Mega Melville Plus Step** Rockland Black - P 85 | **Artex Panel System** Range Shaded Grey - P32



# Mega Lafitt Plus Step



textured



180 mm x 406 mm x 1219 mm  
7 1/16" x 16" x 48"

Range **Margaux Beige**



Range **Newport Grey**



**Rockland Black**



Mega Lafitt Plus Step Rockland Black

# Mega Melville Plus Step

smooth



Mega Melville Plus Step Range Scandina Grey

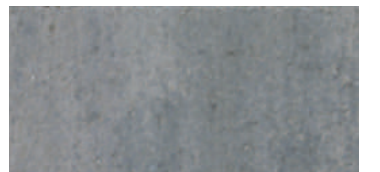


180 mm x 406 mm x 1219 mm  
7 1/16" x 16" x 48"

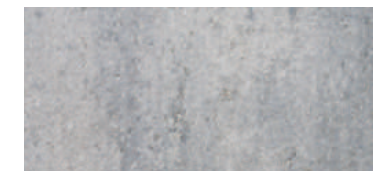
Range **Amber Beige**



Range **Shaded Grey**



Range **Scandina Grey**



**Rockland Black**

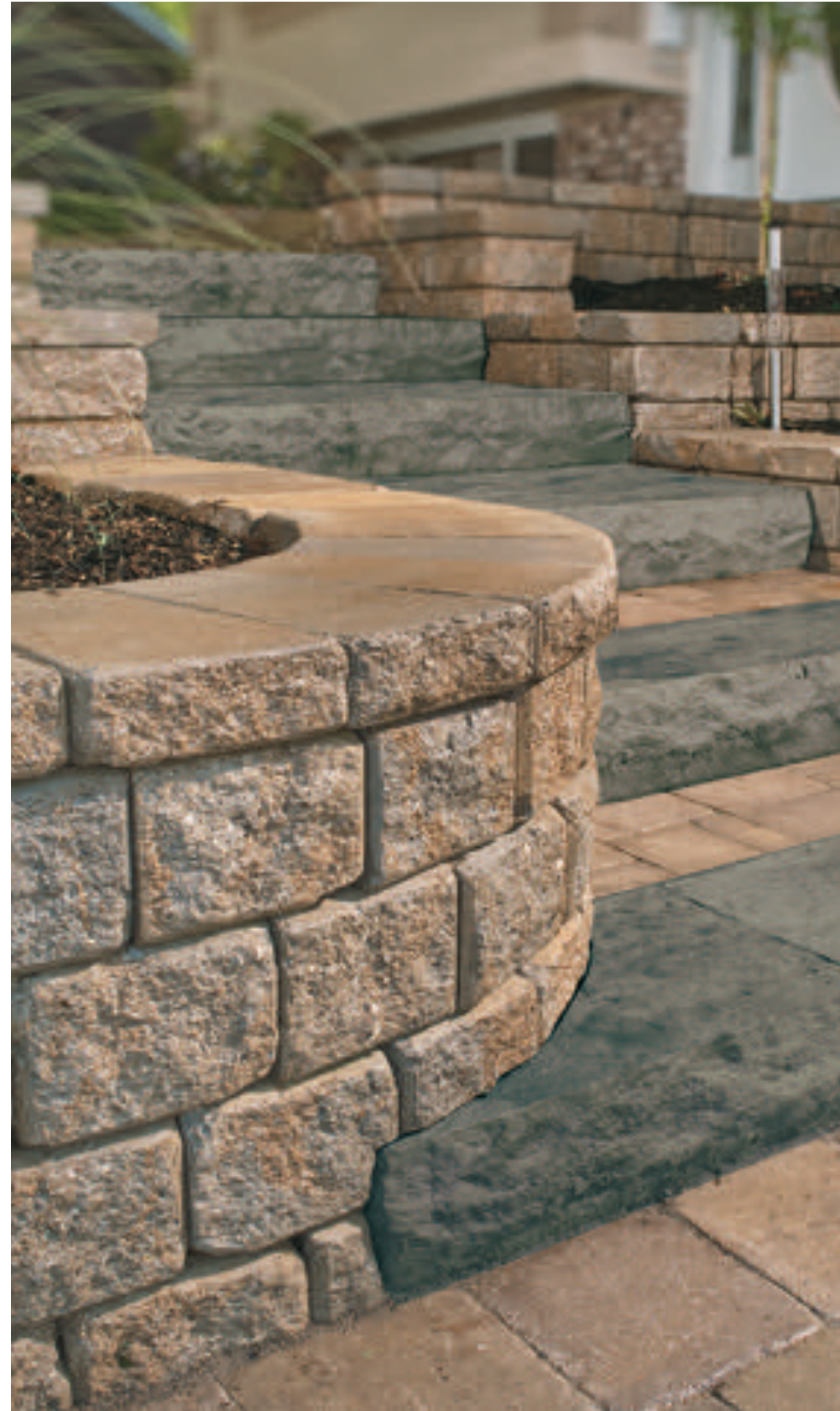


Range **Newport Grey**





# Valentia Step



**Step**  
175 mm x 350 mm x 1200 mm  
6.89" x 13.78" x 47.24"

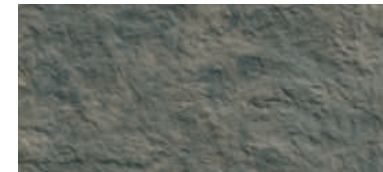


**Terrace Step**  
150 mm x 500 mm x 1500 mm  
5.91" x 19.69" x 59.06"



**Block**  
100 mm x 175 mm x 325 mm  
3.93" x 6.89" x 12.79"

**Slate Brown**



**Sorrento**



**Sierra Black**



Valentia Step Slate brown

# Curbs

88 Lafitt

89 Melville



Melville Curb Range Scandina Grey - P 89



# Lafitt Curb



125 mm x 115 mm x 600 mm  
4 7/8" x 4 1/2" x 23 5/8"

Range **Margaux Beige**



**Rockland Black**



Range **Newport Grey**



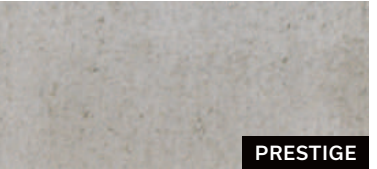
Lafitt Curb Range Newport Grey

# Melville Curb



125 mm x 115 mm x 600 mm  
4 7/8" x 4 1/2" x 23 5/8"

Range **Amber Beige**



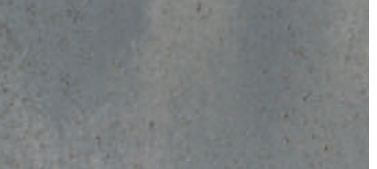
Range **Scandina Grey**



**Rockland Black**



Range **Shaded Grey**



Melville Curb Range Amber Beige



# Elements

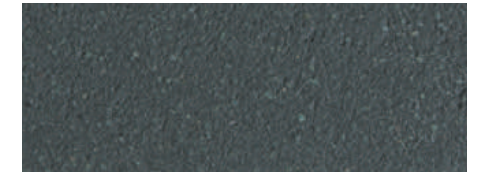
- 91 Fireplace
- 91 Wood Boxes
- 91 Grill Island
- 91 Brick Oven



## Bordeaux

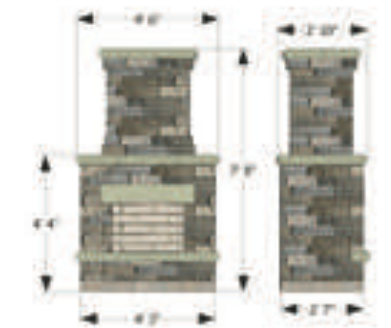


Sienna

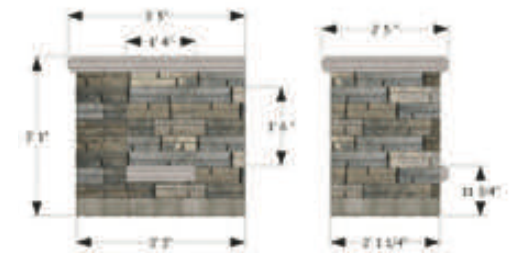


Capping

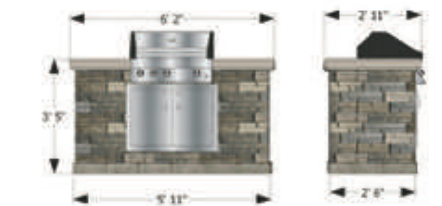
### Bordeaux Fireplace



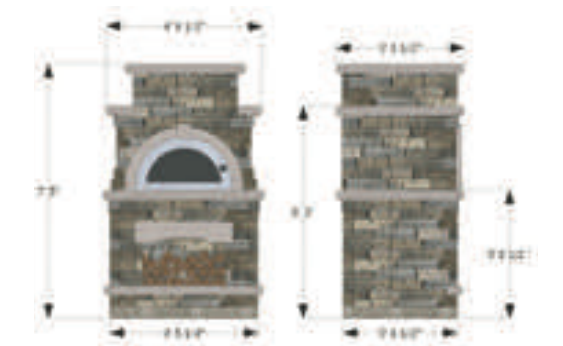
### Bordeaux Wood Boxes



### Bordeaux Grill Island



### Bordeaux Brick Oven





# Mirage

Porcelain tiles, natural stone finishes and wood texture bring materials in harmony with nature.

93 Noon  
93 Quarziti 2.0

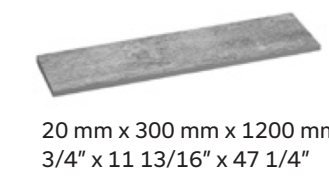


Quarziti 2.0 Large Square Glacier and Mantle

# NOON Porcelain Tiles



Noon Daylight



20 mm x 300 mm x 1200 mm  
3/4" x 11 13/16" x 47 1/4"

Daylight



Ember



# Quarziti 2.0 Porcelain Tiles

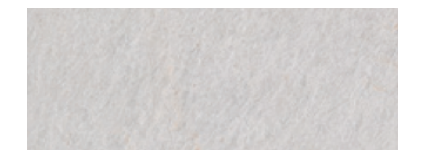


Quarziti 2.0 Large Square Waterfall



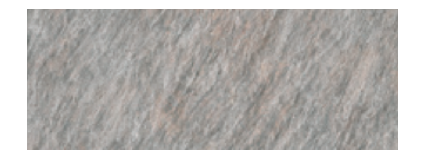
**Large Rectangle**  
20 mm x 600 mm x 1200 mm  
3/4" x 23 5/8" x 47 1/4"  
(Sold separately)

Glacier



**Large Square**  
20 mm x 600 mm x 600 mm  
3/4" x 23 5/8" x 23 5/8"  
(Sold separately)

Waterfall



**Pool Coping**  
20 mm x 330 mm x 600 mm  
3/4" x 13" x 23 5/8"  
(Sold separately)

Mantle



Mountain





# 50 Year Warranty

## Landscape Products



50 Year Warranty | Landscape Products



Permacon's 50-year warranty applies to landscape and masonry products including Suretouch intended for residential use<sup>1</sup>. This warranty statement affirms that products manufactured by Permacon meet the requirements of the CSA (Canadian Standard Association) and ASTM (American Society for Testing and Materials) standards.

For details regarding commercial applications, please refer to our institutional, commercial and industrial warranty.

Permacon guarantees that, as of the date of delivery, our concrete products are free from manufacturing defects. Provided that the conditions set forth below are met, Permacon guarantees the structural integrity of the concrete in its landscaping and masonry products for a period of 50 years from the date of the product's purchase. The warranty applies to normal, non-abusive use of the product. To preserve the original appearance of your products, we recommend that you consult our *Preventive Maintenance Guide for Concrete Landscaping Products* available on our website.

IN ALL CASES DETAILED BELOW, THE WARRANTY IS LIMITED TO THE PRODUCTS' MARKET VALUE.

### How do I make a claim?

 [permacon.ca/en/warranty/](https://permacon.ca/en/warranty/)

Proof of purchase will be required to proceed with a claim request. No claims will be accepted without proof of purchase.<sup>2</sup>

All claims must be reported within 15 days of the discovery of a product's defect. To validate a claim, a Permacon representative will arrive to inspect the defective products in order to confirm whether the claim is admissible. Therefore, it is essential to provide Permacon with the necessary access to inspect and take photos of the products in question.

This warranty is the only one that is presently offered. Because Permacon continually improves and modifies its products, it may alter and discontinue products at any time, and therefore may replace warranty-covered products with products of similar quality or offer monetary compensation if the products under warranty have been discontinued or are no longer on the market while the warranty is active.

In the event that a product is found to be non-conforming by Permacon or an authorized representative of the company, and in order to proceed with compensation, Permacon will take into

account the number of months during which the landscape or masonry products were in the possession of the owner or their contractor, up to the date of the claim, and will prorate the amount of the payment or replacement to be made accordingly.

For example: if the purchaser makes a warranty claim in the last month of the 10th year of the warranty (i.e., the 120th month), the manufacturer, at its sole discretion, shall either:

- Provide a replacement for the product in question if still available (only the defective product will be replaced)
- Return 480/600 of the price paid for the products to the owner. No labour, transportation, or other compensation will be covered by Permacon

### Transferability

The warranty is transferable. Proof of warranty registration will still be required in the event of a claim. The prorated period will be based on the 50-year warranty period remaining as an assignee, if the purchaser transfers the warranty to a subsequent owner, as described above.

### Exclusions

A landscape or masonry product installed on an area of more than **100 square feet** confirms the acceptance of the product received on site and that no claim can be made to Permacon regarding the colour, size, or texture of the product.

This warranty excludes all products not supplied by Permacon, as well as any defects, failures, or damages that may result from the actions listed below:

- Contact with chemicals or cleaning products
- Damage caused by pressure washers
- Improper installation or other construction activities that do not comply with the installation standards established by ICPI, NCMA or IMQ, the National Building Code or the installation methods and tips recommended by Permacon. The installation guides provided by Permacon represent certain installation situations and are not exhaustive. It is therefore strongly recommended that you consult a qualified professional to ensure the proper installation of Permacon products on a specific job site.
- Defective design or construction resulting in sagging, shifting, or failure
- Breakage due to shock, impact, or excessive load during handling, use, or transportation
- Natural disaster or other uncontrollable event
- Breakage and damage to products caused by soil movement or building movement as well as misuse of construction, compaction, or snow removal equipment. The warranty does not cover surface deterioration caused by the misuse of sodium chloride (NaCl) to de-ice pavers, slabs, or steps.
- The use of sodium chloride (NaCl) on the following products:
  - Step Valentia
  - Valentia Block
- Be.OnStone and Mirage products sold by Permacon

### Installation

When installing masonry products, it is vital that the work be cleaned to remove residue and contaminants left on the stone or brick. Permacon accepts no responsibility for stains and colour changes caused by installation residue or the consequences of cleaning said residue.

### Colour

**The presence of natural ingredients used in the manufacturing process varies from one product to another. Therefore, the product received on the job site will not be completely identical to the products presented in our commercial presentations (catalogs, samples, displays). Any difference in colour cannot be attributed to the guarantee.**

Photos of our products in landscape and masonry brochures, as well as in displays such as masonry panels and landscape racks at our distributors, are not an exact representation of the products that will be delivered to the job site. Permacon offers a variety of products with different colours to reproduce the appearance of natural stone. It is therefore strongly recommended that you view several products directly from your authorized Permacon distributor to see all available colours.

**It is the purchaser's responsibility to approve the products delivered to the job site prior to installation and to ensure that the colour is satisfactory. It is also recommended to mix products from different pallets received on site. Since variations in colour shades are a natural phenomenon, Permacon does not guarantee colour uniformity between different pallets on the same job site. Product installation constitutes acceptance.**

### Polymeric film

A whitish polymeric film can be found on the surface of our products. This is the result of an inadequate use of polymeric sand. Improper cleaning of slabs and pavers prior to the application of water on the products' surface can cause this whitish polymeric film. This film does not affect the structural integrity of the product. Permacon cannot be held responsible for this phenomenon, which is not covered by the warranty.

### Efflorescence

White traces on the surface of the product are caused by a natural phenomenon called efflorescence. More visible on darker products, efflorescence affects neither the intrinsic technical qualities nor the structural integrity of our products. The possible appearance of efflorescence cannot be the subject of any guarantee on our part. In most cases, efflorescence disappears by itself over time.

**Our Preventive Maintenance Guide for Concrete Landscaping Products is available on our web site [permacon.ca](https://permacon.ca)**

<sup>1</sup> The following locations are defined as residential: family dwelling of 5 units or less, single family home, garden suite, or townhouse

<sup>2</sup> The following items are considered valid proof of purchase: invoice directly from an authorized Permacon distributor or invoice from a landscape contractor, general contractor, mason, or home builder



## Install with confidence

Every paver installation starts with the right choice of jointing sand!

Exclusive to Techniseal, the NextGel technology makes both HP NextGel and SmartSand easier to spread, faster to activate, and cleaner to install.

HP NextGel provides paver installations with superior durability and greater stability than any comparable product on the market.



### SMARTSAND® with NextGel™ TECHNOLOGY

- Ideal for residential projects, requires mechanical compaction
- Designed for optimal jointing of interlocking pavers
- Ideal for narrow joints 1/16" - 1" wide
- For pedestrian and low-traffic areas such as driveways, walkways, patios, etc.



### HP NextGel™

- For residential, commercial, industrial and public projects where mechanical compaction is possible and/or mandatory
- Ideal for concrete, wet-cast, textured or clay pavers and porcelain tiles (only if mechanical compaction is possible)
- For false joints
- Ideal for joints 1/16" - 2" wide
- For high-humidity areas, heavy-sloped and high-traffic areas



Tan



Urban grey

HP NextGel and SmartSand are offered in **Tan** or **Urban grey** by Permacon. Other colours are available; to learn more, visit Techniseal's official website at [techniseal.com](http://techniseal.com)

## Care and Maintenance

### EFFLORESCENCE

Our warranty does not apply to efflorescence. Efflorescence is a whitish residue that sometimes appears as a white powdery film on the pavement surface. This is a naturally occurring process in all concrete products and does not affect the structural integrity of the product.

Although efflorescence is not preventable it will disappear by itself with time or can be cleaned with an efflorescence cleaner.

### POLYMERIC HAZE

Polymeric haze may appear on your pavers or slabs if polymeric sand was used and not properly removed from the surface of the paver or slab. This is no way affects the structural integrity of the product. The hazing will naturally weather away with rain and time. It can also be removed with a specialized cleaner. Permacon recommends contacting your contractor or the polymeric sand company for the sand that was used for advice on the appropriate cleaning product to use.

### CARE

Concrete is an organic product that can absorb stains. It must be cleaned to maintain all its beauty. It is recommended to quickly wash food stains with water and dish soap, sweep away dead leaves.

Permacon products are strong enough to withstand the rigors of our winters and de-icing salts. Make sure, however, that a protective plate covers the steel blade of the snow removal equipment you are using.





# Index

## P 30

### Alternative Landscaping

32 Artex Panel System

## P 34

### Slabs

- 36 Cassara
- 37 City
- 38 Esbelto Textureguard
- 39 Lexa
- 40 Mega Melville
- 42 Mega Mondrian Plus
- N 43 Melville 24 x 24
- 44 Melville 60
- 44 Melville 60 Small Rectangle
- 45 Melville 60 Textureguard
- N 46 Metrik
- 47 Mondrian Plus 50
- 48 Mondrian Plus 60
- 48 Mondrian Plus 60 Small Rectangle
- 49 Rosebel

## P 50

### Pavers

- 52 Cassara
- 53 Cassara Verde
- 54 Esbelto Textureguard
- 55 Kensington Smooth
- 56 Kensington
- 57 Lexa

### Collections



- 58 Mega Melville
- 59 Melville 80
- 59 Melville 80 Small Rectangle
- 60 Melville 80 Textureguard
- 61 Melville Aqua
- 62 Melville Plank
- 63 Mondrian Plus 80
- 63 Mondrian Plus 80 Small Rectangle
- 64 Trafalgar 60
- 65 Vendome 60
- 65 Vendome 80

## P 66

### Walls

- 68 Grande and Grande Wedge
- 69 Lafitt Tandem
- 70 Melville Tandem
- 71 RB
- 72 Urbano
- 73 Wallstone
- 73 Wedgestone

## P 74

### Capping

- 76 Lafitt Plus
- 78 Laguna
- 78 Marina
- 79 Melville Plus
- 81 Mondrian Plus

### Steps

- 77 Lafitt Plus
- 80 Melville Plus 60 and 90

### Legend

-  **Pedestrian**  
Designed to withstand pedestrian traffic
-  **Vehicular**  
Designed to withstand car traffic
-  **Permeable**  
Designed to allow runoff to pass through
-  **Vegetated**  
Allows for vegetation growth

### Mega Steps

- 84 Mega Lafitt Plus
- 85 Mega Melville Plus
- 86 Valentia

### Curbs

- 88 Lafitt
- 89 Melville

## P 90

### Elements

- 91 Fireplace
- 91 Wood Boxes
- 91 Grill Island
- 91 Brick Oven

## P 92

### Mirage Porcelain Tiles

- 93 Noon
- 93 Quarziti 2.0

## P 94

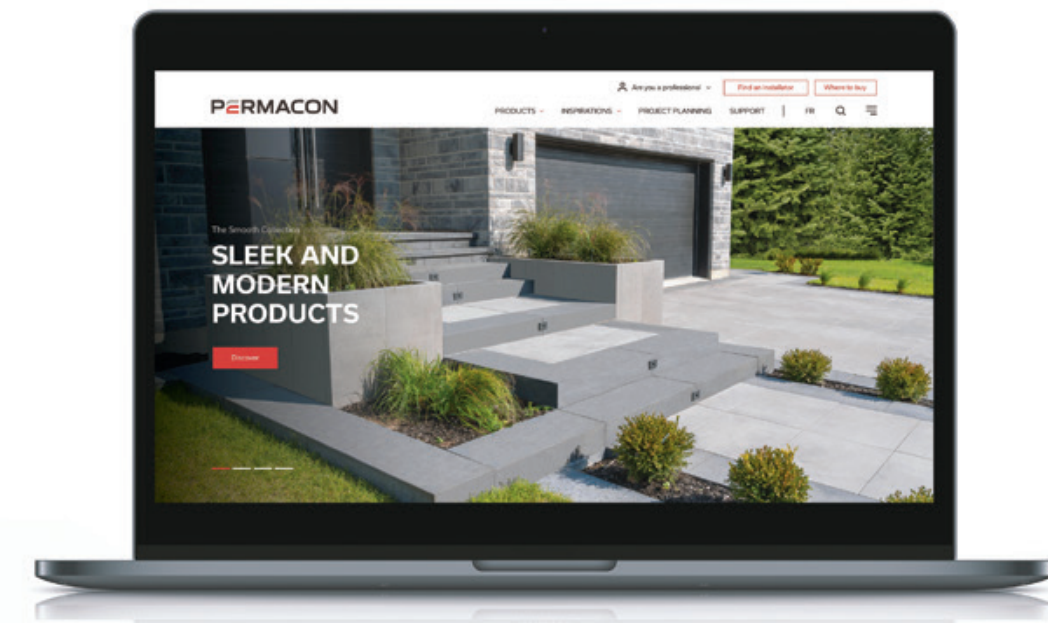
### Miscellaneous

- 94 Warranty
- 96 Polymeric Sands
- 97 Care and Maintenance
- 99 Tools available at permacon.ca

# Follow us

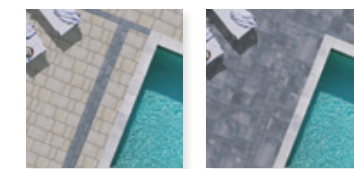


TOOLS AVAILABLE AT [permacon.ca](https://permacon.ca)



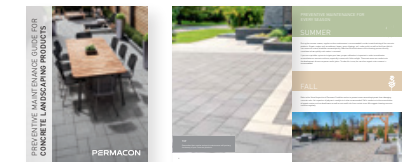
### VISUALIZATION TOOL

Create, dare, change, start again...  
in complete freedom!  
[permacon.ca/visualizer](https://permacon.ca/visualizer)



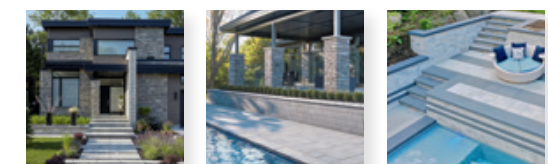
### CARE AND MAINTENANCE

Protect your investment  
[permacon.ca/maintenanceguide](https://permacon.ca/maintenanceguide)



### INSPIRATION

Let yourself be inspired by  
our gallery of projects  
[permacon.ca/inspirations/landscaping](https://permacon.ca/inspirations/landscaping)



### Trademarks, Patents and Industrial Drawings

Most of our products are protected by Patent and Industrial Design which is owned by Oldcastle Building Products Canada, Inc. except for those indicated otherwise.  
**Vendome® Pavers:** Canada and United States. Patented, United States, Canada, Mexico and Europe. **Lafitt® Tandem® Wall:** Patented, Canada, United States and Europe. **Rosebel® Slabs:** Patented, Canada, United States, Mexico and pending in Europe. **ARTEX™ Panel System:** Patent pending, Canada, United States and Europe.





**70**  
YEARS



Since 1952, all Permacon products have been made with passion and pride in Canada.

1 888 PERMACON  
PERMACON.CA



**PERMACON**  
A CRH COMPANY