



# WALLAROO

HAT COMPANY

2026 COLLECTION

WOMAN-OWNED BUSINESS  
AND CERTIFIED B CORP

Certified



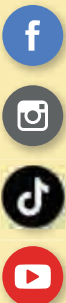
Corporation







*Follow us at @wallarohats and @carkellahats*



@caitlinpfitzingertravel, Kristy pg. 49



@comeflywithlove, Klara pg. 48



@bigbookgal, Montecito pg. 47



@alex.goes.global, Stevie pg. 29

## WHAT IS FLEXI-WEAVE?

As you explore these pages, keep an eye out for Flexi-Weave – this revolutionary textile uses natural and synthetic fibers to create the most resilient, flexible and travel-friendly material we've ever seen. Woven into a long, continuous braid for strength and flexibility, the strands are then treated with heat and pressure, allowing them to retain their shape even when packed. Sewn into a layered pattern, the result is a lightweight, breathable hat with UPF 50+ sun protection that you can take anywhere.

**LIGHTWEIGHT • PACKABLE • DURABLE • WATER RESISTANT • COMFORTABLE • EASY TO CLEAN**

## 2026: A Year for Adventure & Discovery

This is the year to embrace the unknown, to step beyond the familiar, and to explore with an open heart. Travel isn't just something I do – it's something I crave, a deep-seated need for movement, discovery, and transformation.

Every journey fuels my curiosity, broadens my perspective, and reminds me of the vast beauty of the world. Travel isn't just about collecting passport stamps or capturing moments through a lens – it's about experiencing life in its purest form. It's about realizing how intricate and breathtaking different cultures are, how kindness transcends language, and how joy exists in the simplest of moments – a shared meal, a golden sunset, a conversation with a stranger who becomes a friend.

Travel teaches resilience. It makes you adaptable, open-minded, and unafraid of the unfamiliar. It reminds you that growth happens outside of comfort zones, and that life isn't meant to be confined to one place, one routine, or one way of thinking.

Above all, I travel because the world is far too vast, too rich in wonder, to stand still.

As I always say, "It's a sunny life – get out there, explore, and don't forget your hat!"

With gratitude,



Stephanie Carter  
CEO & Co-founder



Cover: Victoria Fedora, page 43. Inside Cover: Fairway, page 11.  
On Stephanie, above: Rio, page 40. Shot on location in Palm Springs, California. Special thanks to Diane Knight and Kevin Knight.

## 2026 COLLECTION

CARKELLA .....	4
THE "W" COLLECTION.....	14
WOMEN.....	40
PETITES .....	58
MEN.....	70
CHILDREN .....	84
WALLAROO FLOOR STAND .....	86
PACKING/ADJUSTING/WASHING/SIZING.....	86
SALES REPS/INDEX.....	87

### UPF Ratings:

Our UPF 30+ fabrics block 96% of the sun's damaging ultraviolet rays, while UPF 50+ fabrics blocks an impressive 97.5%.

### The Skin Cancer Foundation

recommends the material of every Wallaroo hat with a UPF rating of 50+ and a 3" brim or wider as an effective UV protectant.



### Wallaroo Sun Protection

**Commitment:** We promise that each year we will donate 1% of our profits to skin cancer research, education and prevention in the United States.



### We are a Certified B Corporation:

B Corps must meet rigorous standards of performance, accountability and transparency. The goal is to address social and environmental issues, build strong communities and provide great places to work. Learn more at [bcorporation.net](https://www.bcorporation.net).



For sizing information and packing instructions, see page 86 or visit our website at [wallarooohats.com](https://www.wallarooohats.com)





A unique way for businesses to make their mark. Showcase your brand with an elegant, magnetized emblem of any logo or design.



UNISEX

UPF 50+

## NEWHALL

This standout fedora blends light and dark fibers to create a distinctive, updated look for both men and women. A tonal hat band complements the neutral colors, and the Flexi-Weave fabric ensures all-day comfort and easy packability.

3" brim. Wind-resistant adjustable sizing. Packable.  
100% polyester, exclusive of trim. Spot clean.  
M/L (59cm) and L/XL (61cm).

**Style No: NWHLM**

Available October 2025



*French  
Beige*

*Mixed  
Black*





## EMBLEMS

### MAGNETIC ATTRACTION

What makes Carkella unique is the hidden magnet embedded in the trim of each hat. It offers a convenient spot to hold your ball marker or can showcase a custom designed metal emblem.

Emblems can be custom printed to highlight your logo, a special interest, location or event. Tasteful and unique, it becomes a memorable souvenir for any occasion — a corporate retreat, an annual tournament, or even a favorite destination — the possibilities are endless.

Create your own custom design by contacting us at [info@wallarooohats.com](mailto:info@wallarooohats.com).



UPF 50+

## EMERY

With its frayed edged brim and tone-on-tone trim, this unique fedora is a real head turner. Crafted from lightweight, UPF 50+ fabric, it promises comfort and sun protection from dawn to dusk.

*3¼" brim. Wind-resistant adjustable sizing.  
Packable. 100% paper braid, exclusive of trim.  
Spot clean. M (58cm).*

**Style No: EMERM**



*Natural*

*Camel*



UNISEX

UPF 50+

## TAHOE

When adventure calls, this hat is the perfect answer. Made from durable, lightweight ripstop fabric, it is resistant to tearing, water and the wind.

*Brim: 3¾" front, 4" back. Wind-resistant adjustable sizing. Packable. 100% polyester, exclusive of trim. Spot clean. M/L (59cm) and L/XL (61cm).*

**Style No: TAHO**



*Dark Grey/Stone*

*White/Grey*





UPF 50+

## KERRIGAN

An extra-wide sweeping brim makes this hat perfect for lounging in the sun with plenty of protection for the face and neck. The contrasting threads of the woven fabric give it a soft, yet structured look.

4½" brim. Wind-resistant adjustable sizing. Packable. 100% polypropylene, exclusive of trim. Spot clean. M (58cm).

**Style No: KERRM**

*Ivory/Black*



*Ivory/Cloud Grey*



UPF 50+

## LAUREN

Opt for a bolder look with the pairing of contrasting colors and the classic fedora. Made from our exclusive Flexi-Weave fabric, it can travel anywhere you dare to go.

3 $\frac{3}{8}$ " brim. Wind-resistant adjustable sizing. Packable. 100% polyester, exclusive of trim. Spot clean. M (58cm).

**Style No: LAUM** (032)



*Ivory*

*Mixed Camel*



"The hat is great and the greatest surprise was the ball marker magnet built in! Very clever."

Erica C.



UPF 50+

## VIVIAN

A touch of femininity softens the classic fedora. Ribbon detail and pastel colors offset an oversized, turned-up pencil brim. Flexi-Weave material makes it packable when you need a hat on the go.

4" brim. Wind-resistant adjustable sizing. Packable. 100% polyester braid, exclusive of trim. Spot clean. M (58cm).

**Style No: VIVIM**



*Dusty Rose*

*White/Beige*



UNISEX

UPF 50+

## PORTLAND

A style for all, this wide-brimmed hat provides excellent sun protection. The textured weave and pleated ribbon gives it a distinctive style you can call your own.

*3¼" brim. Wind-resistant adjustable sizing. Packing not recommended. 100% paper straw, exclusive of trim. Spot clean. M/L (59cm) and L/XL (61cm).*

**Style No: PORTM**



*Ivory*





"I love this hat. It is so soft and it folds up for travel. I am hooked. Customer for life."

Greg L.

NEW COLOR

UNISEX

UPF 50+

## FAIRWAY

The best adventures require the best gear. You can take this Flexi-Weave fedora anywhere and look great wearing it.

2½" brim. Wind-resistant adjustable sizing. Packable. 100% polyester, exclusive of trim. Spot clean. M/L (59cm) and L/XL (61cm).

**Style No: FAIRM**

New color available October 2025





"Excellent fit, materials, and quality—a new favorite!"

Daniel B.

## UNISEX

### DEL MAR

Stay on trend in the smaller profile and classic cut of a trilby. Fashioned from our popular Flexi-Weave fabric, it's packable, washable and durable. We've worn the Del Mar hiking in Peru and brunching in Boulder, so when we say you can wear it anywhere, we mean it.

1¾" brim. Wind-resistant adjustable sizing. Packable. 100% polyester, exclusive of trim. Spot clean. M/L (59cm) and L/XL (61cm).

**Style No: DELMM**



*Ivory*

## FLEXI-WEAVE FABRIC

is perfect for stashing in your carry-on or handbag—it will spring back to life with just a bit of straightening and smoothing.

*Beige*





## LILY VISOR

Perfect for cutting the glare of the bright afternoon sun. Flexi-Weave allows this visor to roll up small so you can keep it in your bag for handy and stylish sun protection.

4¾" brim. Velcro® adjustment. Packable. 100% polyester. Spot clean. M (58cm).

Lily Visor does not feature built-in magnet for customizable emblems.

**Style No: LILY**

### ROLL IT

Lay visor out flat, then roll up and secure with the elastic band.



*Beige/Black*

*White/Beige*

# The W Collection

With premium fabrics and high-quality construction, these unique hats are designed to make a fashion statement.



NEW

## Capri

Crafted from natural raffia, this elegant visor will keep you cool for your stylish summer outings. The two-tone elastic strap stretches for a comfortable fit.

4" brim. Nonadjustable elastic strap. Packing not recommended.  
100% raffia, exclusive of trim. Do not wash. M (58cm).

**Style: CPRI**

Available October 2025.



natural



mushroom







NEW

UPF 50+

## Greenwich

This hat is perfect for leisurely outdoor activities where both sun protection and style are key – think seaside strolls, garden parties, or lunch al fresco. Sharp navy lines stand out on the brim and crown for a crisp, polished look. Flexi-Weave fabric makes it packable and lightweight for easy travel.

3" brim. Inner drawstring adjusts fit. Packable. 100% polyester, exclusive of trim. Spot clean. M (58cm).

**Style: GRNW**

Available October 2025.



ivory





NEW

UPF 50+

## Denver

Made from our signature UPF 50+ Flexi-Weave material, this updated cowboy style has a lightness and comfort you don't get in a traditional western hat. It's easy to pack and features a suede chin strap for a secure fit on windy days.

3" brim. Inner drawstring adjusts fit. Packable. 100% polyester, exclusive of trim. Spot clean. M (58cm).

**Style: DNVR**

Available October 2025.



taupe







UNISEX

UPF 50+

## Monterey

We love fedoras because they are so versatile. Try pairing this one with jeans and watch an everyday look turn into a fashion statement. Blue and white pinstripe or solid black band at crown.

2 $\frac{3}{8}$ " brim. Inner drawstring adjusts fit. Packing not recommended.  
100% Japanese glazed paper, exclusive of trim. Do not wash.  
M (58cm).

**Style: MNTRY**



natural/blue



natural/black

*"This hat is beyond cute! It is comfortable, stylish, sun protective, and folds to travel well! I just love it!"* DARLENE B.



L/XL SIZE

UNISEX

UPF 50+

## Charlie

Sophisticated structure and a two-toned weave create a timeless look that's as effortless as it is refined. Lightweight and flattering, this fedora looks great on everyone—your new go-to for life on the go.

2¾" brim. Inner drawstring adjusts fit. Packable. 100% polypropylene, exclusive of trim. Spot clean. M (58cm) and L/XL (61cm), also available in petite.

**Style: CHA, CHAXL**

M ONLY

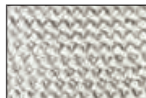
M & L/XL



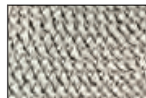
ivory/pewter



ivory/taupe



ivory/dusty blue



ivory/black







## Charlie Visor

Upgrade your sporty visor to a more fashion-ready look. Contrast stitching and trim looks great on everyone. Easily packs up for any adventure.

3¾" brim. Velcro® strap adjusts fit. Packable. 100% polypropylene, exclusive of trim. Spot clean. M (58cm).

**Style: CHAVIS**



ivory/taupe



ivory/black



*Roll It! Lay visor out flat, then roll up and secure with the elastic band.*



UPF 50+

## Darby

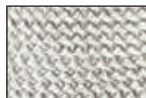
With a nod to vintage style, our cloche hat pairs timeless charm with lightweight polypropylene fabric. The two-toned texture gives it a fresh, contemporary touch.

3" brim. Inner drawstring adjusts fit. Packable. 100% polypropylene, exclusive of trim. Spot clean. M (58cm), also available in petite.

**Style: DARB**



ivory/taupe



ivory/dusty blue



ivory/black







NEW

UPF 50+

## Lady Brett

Much like the timeless elegance of Jane Seymour, this classic cloche hat with suede trim never goes out of style. Crafted with innovative Flexi-Weave material, it effortlessly retains its shape – even after packing – ensuring you always look polished and sophisticated.

3" brim. Inner drawstring adjusts fit. Packable. 100% polyester, exclusive of trim. Hand wash cold. M (58cm).

**Style: LBRT**

Available October 2025.



ivory



mixed camel







UPF 50+

## Margot

This gorgeous hat by Jane Seymour and Wallaroo is a design reminiscent of the sophisticated and cinematic style of Audrey Hepburn. Crafted from our signature Flexi-Weave fabric, it is surprisingly lightweight and easy to pack for travel.

4½" brim. Inner drawstring adjusts fit. Packable. 100% polyester, exclusive of trim. Spot clean. M (58cm).

**Style: MARG**



ivory



taupe



black





UPF 50+

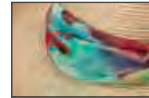
## Lady Jane

Artistic elegance brought to you by renowned actress Jane Seymour, in partnership with Wallaroo. Her colorful artwork brightens up this versatile Flexi-Weave hat.

3¾" brim. Inner drawstring adjusts fit. Packable.

100% polyester, exclusive of trim. Spot clean. M (58cm).

**Style: LJANE**



natural



white/beige



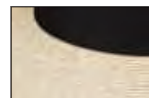
UPF 50+

## Elise

Inspired by the timeless romance movie, "Somewhere in Time," starring Jane Seymour, this impressive hat has a sweeping brim for enchanting walks by the sea. Sun protection at its finest.

4½" brim. Inner drawstring adjusts fit. Packable. 100% polyester, exclusive of trim. Spot clean. M (58cm), also available in petite.

**Style: ELIS**



white/beige

*"Very stylish & comfortable! Best of all, it also provides serious sun protection. Highly recommend."*

JANET M.





UPF 50+

## Quinn

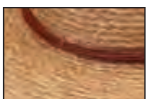
A nod to Jane Seymour's role in "Dr. Quinn, Medicine Woman," we have created a romantic, feminine version of the Old West style cowboy hat. The brim can be adjusted up or down, and a thin leather cord adds an artistic touch.

3" brim. Inner drawstring adjusts fit. Packing not recommended. 100% raffia, exclusive of trim, cotton lining. Do not wash. M (58cm).

**Style: QUI**



ivory



camel







UNISEX

UPF 50+

## Marina

We take pride in our Mexican co-op designs, and this gorgeous handmade hat is versatile enough for any adventure. Prepare for roads less traveled in this distinctive style.

3" brim. Elastic-fit comfort band. Packing not recommended.  
100% palm fiber, exclusive of trim. Do not wash. M (58cm).

**Style: MAR**



natural



camel







UNISEX

UPF 50+

## Tulum

Sustainability meets style in this beautiful natural fiber hat with a twisted leather band trim. Meticulously handcrafted by artisans in a co-op outside Guadalajara, Mexico.

4" brim. Elastic-fit comfort band. Packing not recommended. 100% palm fiber, exclusive of trim. Do not wash. M (58cm).

**Style: TULU**



natural





UNISEX

UPF 50+

## Colorado

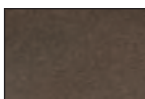
Embrace the spirit of the Rocky Mountains in this stylish, wide brim felt hat. Sturdy, yet soft, its versatile design makes it perfect for all-season wear. Finished with a waxed cotton cord trim.

4" brim. Inner drawstring adjusts fit. Packing not recommended.  
100% wool felt, exclusive of trim. Spot clean. M (58cm).

**Style: COLO**



oatmeal



truffle





*"I wanted a felt hat for the fall/winter seasons and this fits the bill. Thank you Wallaroo for another high quality hat to add to my wardrobe!"*

MARCIA L.



UPF 50+

## Aspen

Update your look any time of year with this stunning fedora. Made from soft brushed felt with leather trim in wardrobe-enhancing neutrals.

2¾" brim. Inner drawstring adjusts fit. Packable. 100% wool felt, exclusive of trim. Spot clean. M (58cm), also available in petite.

**Style: ASPE**



winter white

taupe

camel

black



UPF 50+

## Telluride

Perfect for cooler days, this stylish fedora elevates your fall to spring wardrobe. Soft faux suede and a leather band create a casual mountain vibe.

4" brim. Inner drawstring adjusts fit. Packing not recommended. 100% faux suede, exclusive of trim. Do not wash. M (58cm).

**Style: TELL**



camel

chestnut

sage







UPF 50+

## Montecito

A broad-brimmed rancher-style hat with clean lines for a modern, polished look. Featuring a waxed cotton cord trim with gold metal tips.

4" brim. Inner drawstring adjusts fit. Packable. 100% paper braid, exclusive of trim. Spot clean. M (58cm).

**Style: MONTE**



natural



sage



camel



graphite







UPF 50+

## Stevie

Step out in style with this gambler hat, distinguished by its oval crown and pencil brim. Innovative Flexi-Weave fabric is comfortable, lightweight and long-lasting. Finished off with a beautiful, patterned suede band and chin strap.

3¼" brim. Inner drawstring adjusts fit. Packable. 100% polyester, exclusive of trim. Spot clean. M (58cm).

**Style: STEV**



ivory



camel





*Roll It! Lay visor out flat, then roll up and secure with the elastic band.*



## Savannah Visor

Enjoy the cooler, lighter benefits of a visor with stylish stripes and a dramatic brim. Easy to pack and adjust, this will quickly become a favorite travel accessory.

4" brim. Velcro® strap adjusts fit. Packable. 100% paper braid. Spot clean. M (58cm), also available in petite.

**Style: SAVVIS**



camel/  
black stripes



navy/  
camel stripes



black/  
camel stripes



UPF 50+

## St. Lucia

Versatility and comfort come together to create this elegant travel companion. A feminine, wide-brimmed hat crafted from our signature Flexi-Weave fabric.

4" brim. Inner drawstring adjusts fit. Packable. 100% polyester, exclusive of trim. Spot clean. M (58cm).

**Style: STLUC**



mixed beige



navy combo





UPF 50+

## Marseille

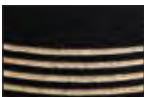
Stripes are always in style. From the beach to the runway, this hat adds a touch of class to any event. Flexi-Weave fabric holds its shape on the go, and the waxed cotton cord ties it all together.

4½" brim. Inner drawstring adjusts fit. Packable. 100% polyester, exclusive of trim. Spot clean. M (58cm), also available in petite.

**Style: MARS**



white/beige



black/natural







UPF 50+

## Nosara

Artfully woven raffia evokes an island sentiment. An extra-wide brim provides necessary sun protection, while the adjustable chin strap made from waxed cotton cord keeps it secure.

*4½" brim. Inner drawstring adjusts fit. Packing not recommended. 100% raffia, exclusive of trim, cotton lining. Do not wash. M (58cm).*

**Style: NOSA**



natural



camel







## Malibu

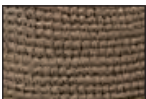
An elegant fedora creates a classic look for any occasion. We've dressed up this version with the sparkle of silver and gold-colored beads.

2¾" brim. Inner drawstring adjusts fit. Packing not recommended.  
100% raffia, exclusive of trim. Do not wash. M (58cm).

**Style: MAL**



natural



mushroom



navy



*"The Malibu hat is the perfect lightweight hat for summertime fun."* TERESA H.





## Laguna

The juxtaposition of raw, natural fiber with the clean, structured lines of paper braid shows that opposites really do attract. Waxed cotton cord accented with gold metal tips bridges the gap.

2 $\frac{7}{8}$ " brim. Inner drawstring adjusts fit. Packing not recommended. 50% raffia, 50% paper braid, exclusive of trim. Do not wash. M (58cm).

**Style: LAGU**



natural/white



natural/navy



**UPF 50+**

## Charlotte

The classic fedora gets a glamorous upgrade. Bring effortless style to any outfit with natural raffia and a dramatic brim.

3 $\frac{3}{4}$ " brim. Inner drawstring adjusts fit. Packing not recommended. 100% raffia, exclusive of trim, cotton lining. Do not wash. M (58cm).

**Style: CHLT**



natural





UPF 50+

## Paloma

Light fraying on the brim and a natural fiber braid gives this hat the perfect look for outdoor festivals or an island tiki bar. Black ribbon and braided raffia trim add a unique touch.

3¼" brim. Inner drawstring adjusts fit. Packing not recommended.  
100% raffia, exclusive of trim. Do not wash. M (58cm).

**Style: PALO**



ivory



camel





*We use high-quality Madagascan raffia, which contains a resin that prevents cracking and brittleness. Raffia is strong, pliable and easy to dye — making it an excellent material for crafting hats.*



## ***Catalina***

Hand-crocheted from genuine raffia with a generous brim to keep you cool. Twisted raffia band ties in a bow in the back.

4" brim. Inner drawstring adjusts fit. Packing not recommended. 100% raffia. Do not wash. M (58cm), also available in petite.

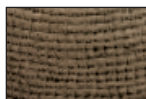
**Style: CAT**



natural



dusty blue



mushroom







L/XL SIZE

## Catalina Cowboy

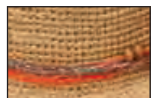
Wire-edged brim for perfect shaping with an artsy mix of faux suede leather, colored braid and beads to make it interesting.

3" brim. Inner drawstring adjusts fit. Packing not recommended. 100% raffia, exclusive of trim. Do not wash. M (58cm) and L/XL (61cm), also available in petite.

**Style: CCOW, CCOWXL**

M ONLY

M &amp; L/XL



natural



dusty blue



mushroom



*"Gorgeous! Yes, that is a true description of this cowgirl hat! It's comfortable, lightweight, and stylish. I like the ability to literally bend it into different styles. Nice with jeans, shorts, or a beautiful summer dress. Love it."* LISA B.



**NEW COLOR**

## Tahiti Cowboy

Color-dyed band and matching stone beads add a punch of color to the basic cowboy. The wire-edged brim lets you adjust it for just the right look.

3¼" brim. Inner drawstring adjusts fit. Packing not recommended.  
100% raffia, exclusive of trim. Do not wash. M (58cm).

**Style: TCOW**

New color available October 2025.



turquoise



sage



taupe



dusty blue



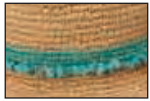


## Tahiti

The hip, city sister to the Tahiti Cowboy. Accented with a color-dyed band and matching stones, we've got a color for everyone.

1¾" brim. Inner drawstring adjusts fit. Packing not recommended. 100% raffia, exclusive of trim. Do not wash. M (58cm).

**Style: TAH**



turquoise



sage



taupe



black



## Tina

Make this hat part of your summer style. All-natural crocheted raffia crown is wrapped in jute string twisted with wood beads.

3½" brim. Inner drawstring adjusts fit. Packing not recommended. 100% raffia, exclusive of trim. Do not wash. M (58cm).

**Style: TIN**



natural



## Women's Collection

A variety of colors and travel-ready fabrics highlight this group of casual, functional, every-adventure hats.



NEW

UPF 50+

### ***Rio***

Get out and see the world in Flexi-Weave. This lightweight and packable material is the secret to this compact travel hat. With its subtly feminine look and twisted raffia trim, it's the perfect accent to any adventure.

2½" brim. Inner drawstring adjusts fit. Packable.  
100% polyester. Spot clean. M (58cm).

**Style: RIO**

Available October 2025.



white/beige



cinnamon







NEW

## Victoria Cap

A lightweight, breathable take on the Victoria hat – now in a compact cap shape for all your active pursuits. Designed to be worn with a ponytail and easily adjusted with the leather buckle for a secure fit. Perfect for every sporting endeavor.

3" brim. Back buckle adjusts fit. Packable.  
100% poly-straw. Spot clean. M (58cm).

**Style: VICC**

Available October 2025.



mixed camel



black



BACK







NEW

UPF 50+

## Victoria Fedora Diva

Perfect for all-day outdoor activities, this lightweight fedora has an extra-wide brim, which adds a little drama and even more sun protection than its sister style. Twisted raffia trim with wooden beads.

4" brim. Inner drawstring adjusts fit. Packable. 100% poly-straw, exclusive of trim, cotton lining. Spot clean. M (58cm).

**Style: VICFD**

Available October 2025.



mixed camel

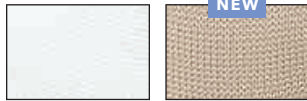


suede



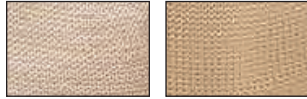


## M ONLY



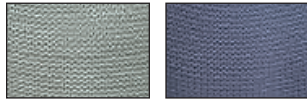
white

stone



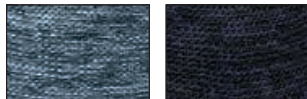
mixed beige

tan



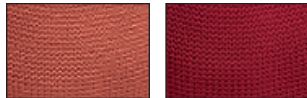
seafoam

dusty blue



mixed denim

mixed navy



paprika

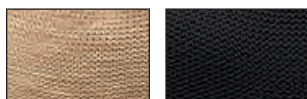
cranberry



olive

suede

## M &amp; L/XL



mixed camel

black



NEW COLORS

L/XL SIZE

UPF 50+

## Victoria Fedora

Ready for anything, this full-brim hat offers dependable sun protection when you're out and about. Lightweight and packable, it's the perfect travel companion for wherever the sun takes you. Matching cord trim.

3" brim. Inner drawstring adjusts fit. Packable. 100% poly-straw, cotton trim and lining. Spot clean. M (58cm) and L/XL (61cm).

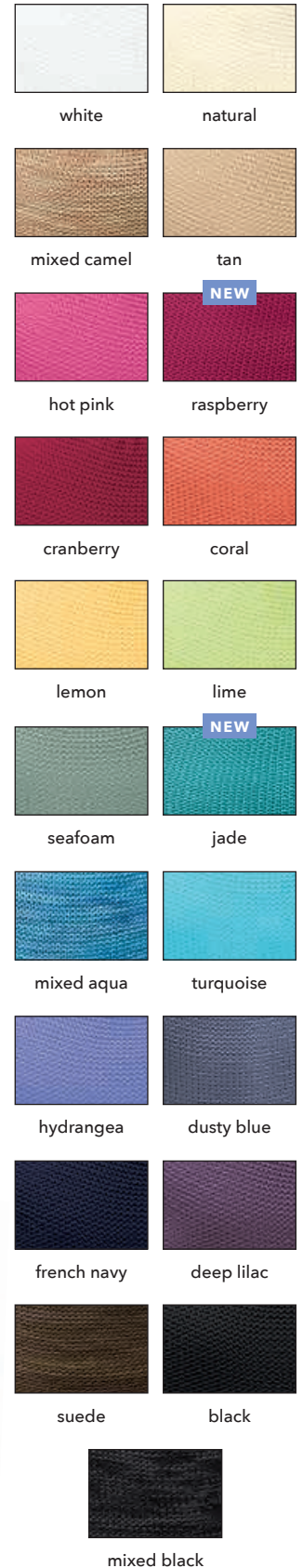
**Style: VICF, VICFXL**

New colors available October 2025.

*Our Victoria hats are made from ultra-lightweight poly-straw. Perfect for everyday pursuits and available in a wide range of vibrant colors and styles.*







## NEW COLORS

### Victoria

Ultra-lightweight and packable, the Victoria was designed for modern comfort and timeless appeal. Perfect for casual weekends and sunny getaways.

3½" shaped brim. Inner drawstring adjusts fit. Packable. 100% poly-straw. Spot clean. M (58cm), also available in petite.

**Style: VIC**

New colors available October 2025.



*"This is the fourth Victoria that I've bought. Wonderful hats, great coverage, many compliments, sturdy for all types of events!"* PATTI A.





## Victoria Diva

Featuring the same round crown as the original Victoria, the Diva version goes for a more elegant look with its wider brim.

4½" brim. Inner drawstring adjusts fit. Packable.  
100% poly-straw. Spot clean. M (58cm).

**Style: VICD**



white



mixed camel



mixed navy



black



UPF 50+

## Victoria UPF

A customer favorite, this Victoria is fully lined, which earns it our coveted UPF 50+ rating. Made of ultra-lightweight poly-straw material, the upturned brim and rounded crown flatters everyone.

3½" brim. Inner drawstring adjusts fit. Packable.  
100% poly-straw, cotton lining. Spot clean. M (58cm).

**Style No: VICUPF**



white



mixed camel



hydrangea



black







UPF 50+

## Casual Traveler

The hat that started it all. In 1999, we began Wallaroo with the Casual Traveler, and we are both still here! Available in quick-dry microfiber and breathable cotton, this is the ultimate beach hat. The adjustable brim can be worn up or down.

4" brim. Inner drawstring adjusts fit. Packable. Available in 100% microfiber or 100% cotton. Hand wash cold. M (58cm).

**Style: CAST** Microfiber

**Style: CASTCV** Cotton



### MICROFIBER



white

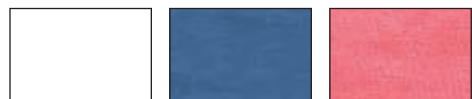
natural

camel

navy

black

### COTTON



white

slate blue

coral





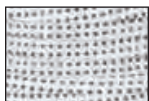
UPF 50+

## Scrunchie

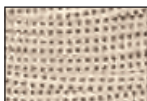
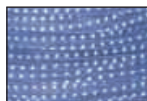
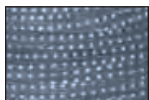
This versatile sun hat is your solution for instant shade wherever the day takes you – beach, hike, picnic, or party. The extra-wide, wire-edged brim lets you shape it to suit your style and your mood.

*4½" brim. Inner drawstring adjusts fit. Packable. 100% polyester. Hand wash cold. M (58cm), also available in petite and children's.*

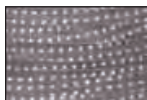
**Style: SCR**



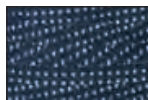
white/black dots

natural/  
brown dotshydrangea/  
white dots

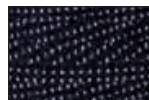
slate/white dots



grey/white dots



navy/white dots



black/white dots





UPF 50+

## Caroline

Tonal color gives this fedora a distinctively refined and feminine look. Flexi-Weave fabric makes it travel-ready – just throw it in your bag and go.

*2½" brim. Inner drawstring adjusts fit. Packable. 100% polyester, exclusive of trim. Spot clean. M (58cm).*

**Style: CARO**



ivory



sky blue



dusty rose



beige



UPF 50+

## Klara

Comfort and elegance come together in this wide-brimmed, sophisticated fedora. With a UPF 50+ rating, the Klara provides full protection for extended days in the sun.

*3¾" brim. Inner drawstring adjusts fit. Packing not recommended. 100% paper straw, exclusive of trim. Spot clean. M (58cm).*

**Style: KLAR**



white



camel

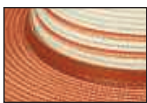


navy

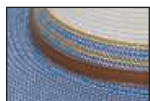




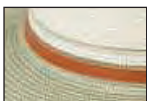
ivory/stone



ivory/coral



ivory/ice blue



ivory/sage



ivory/navy



ivory/black

UPF 50+

## Kristy

Structured for a classic look, this fedora has lasting style. Faux leather band with metal buckle.

3" brim. Inner drawstring adjusts fit. Packable. 100% polypropylene, exclusive of trim. Spot clean. M (58cm), also available in petite.

**Style: KRI**







UPF 50+

## Breton

Contrasting poly-ribbon braids bring a punch of color to any outfit. Brim can be worn up or down. Faux suede leather tie with wood beads.

4" brim. Inner drawstring adjusts fit. Packable. 50% poly-ribbon and 50% poly-braid, exclusive of trim. Spot clean. M (58cm).

**Style: BRE**



taupe



hydrangea



navy

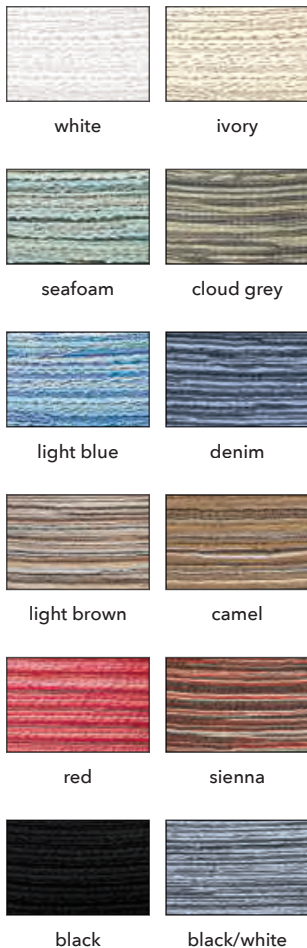


red



chocolate





UPF 30+

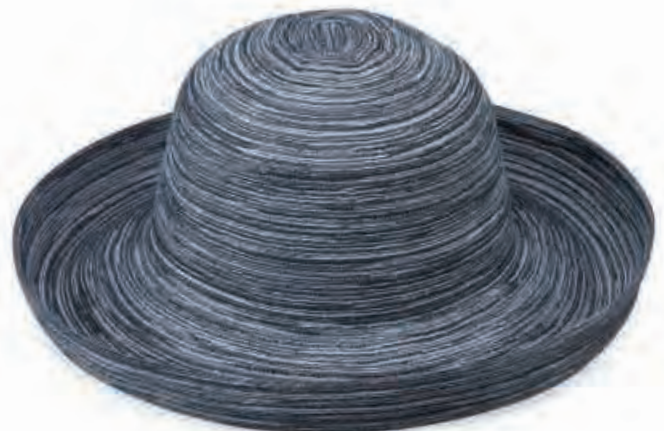
## Sydney

The Sydney is made with fibers of matching tonal colors woven together into a thin, breathable polyester braid. This classic style has a wide brim with stylish turned-up edges.

3¾" brim. Inner drawstring adjusts fit. Packable.  
100% poly-braid. Hand wash cold. M (58cm).

**Style: SYD**

*"I love the way it looks and packing it for a trip is super easy. Just roll it as instructed on the tag and it is perfect on arrival."* HEATHER F.







UPF 30+

## Bali

Light and breezy, this hat is comfortable enough to wear all day and pretty enough for special occasions. Perfect for travel and keeps you protected from the sun.

4" brim. Inner drawstring adjusts fit. Packable. 100% paper braid, exclusive of trim. Spot clean. M (58cm).

**Style: BALI**



natural



L/XL SIZE

UPF 50+

## Sanibel

Inspired by island living, the Sanibel was designed for ocean breezes and colorful sunsets. Wide brim ensures maximum sun protection and the waxed cotton cord chin strap provides extra wind resistance.

4" brim. Inner drawstring adjusts fit. Packable. 100% paper braid, exclusive of trim. Spot clean. M (58cm) and L/XL (61cm), also available in petite.

**Style: SANI, SANIXL**

M ONLY

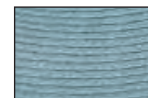
M & L/XL



camel



coral



cornflower



white/beige





UPF 50+

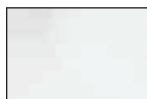
## Gabi

A ponytail hat that strikes the perfect balance between playful and sophisticated. Made from lightweight, durable Flexi-Weave, it is perfect for travel and adventure.

3" brim. Velcro® adjustment. Packable. 100% polyester, exclusive of trim. Spot clean. M (58cm), also available in petite.

**Style: GABI**

BACK



white



ivory



beige



black



white



coral



hot pink



turquoise



hydrangea



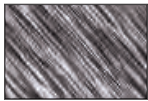
royal blue



navy



black



black combo



clockworks



palazzo



## Aqua Visor

Quick-drying and lightweight fabric lets you enjoy any water activity without leaving your hat behind.

4" brim. Tie in back adjusts to any size. Packable. 100% Lycra®. Hand wash cold. M (58cm).

**Style: AQU**



*"Lightest weight. Amazingly broad (and still stylish) coverage. Perfect adjustability. If there were 10 stars, this would get them all!"* JOSEPHINE R.



**UPF 50+**

## *Aqua Hat*

Hit the beach or the waves with the security of water-safe, wrap-around sun protection. Matching chin strap provides extra wind resistance.

3½" brim. Stretches to fit. Packable. 100% Lycra®.  
Hand wash cold. M (58cm).

**Style: AQUH**



white



turquoise



navy



black





L/XL SIZE

UNISEX

UPF 50+

## Sedona

The classic fedora shape is updated with a colorful Aztec flair. Structured brim provides significant shade.

3" brim. Inner drawstring adjusts fit. Packable. 100% paper braid, exclusive of trim. Spot clean. M (58cm) and L/XL (61cm), also available in petite.

**Style: SED, SEDXL**

M ONLY

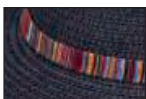
M & L/XL



natural



sage



navy



camel







## Sedona Visor

Modeled after our popular Sedona hat, the matching visor offers a sporty option for active pursuits.

4" brim. Velcro® strap adjusts fit. Packable. 100% paper braid, exclusive of trim. Spot clean. M (58cm).

**Style: SEDVIS**



natural



camel

*Roll It! Lay visor out flat, then roll up and secure with the elastic band.*



UPF 50+

## Sanitas

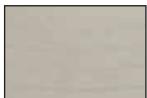
Named for our favorite hike in Boulder, Colorado, this quick-dry, adventure-ready hat goes anywhere you do. The handy chin strap makes sure it stays put in the windiest conditions. Even better, a hidden opening can be used as a ponytail holder to keep long hair out of the way.

3¾" foam brim. Inner drawstring adjusts fit. Packable. 100% microfiber. Hand wash cold. M (58cm).

**Style: SNTS**

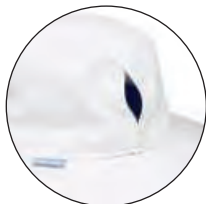


white/navy



stone/natural

BACK



## Petite Collection

Scaled down for smaller profiles, our wide selection of petite-sized hats has been drawn from our bestselling styles.



NEW

UPF 50+

### Petite Darby

Elegantly tailored for petites, with all the charm of the original. The rounded crown and shorter brim of this French-inspired cloche style is an ideal silhouette for smaller frames.

2¾" brim. Inner drawstring adjusts fit. Packable. 100% polypropylene, exclusive of trim. Spot clean. XS/S (55cm).

**Style: PDARB**

Available October 2025.



ivory/black



*Many of our hats travel with ease. See page 86 for information about specific packing methods.*



*"I love my new hat, the petite sizing along with a small adjustment to the inner headband has made the fit perfect for my petite head. Thank you Wallaroo for offering a nice selection of hats in small sizes."* MARCIA W.



UPF 50+

## Petite Charlie

Lightweight, stylish, and adventure-ready. This hat features a subtle two-tone weave and a petite-friendly fit. It's the ultimate pack-and-go companion.

2¾" brim. Inner drawstring adjusts fit. Packable. 100% polypropylene, exclusive of trim. Spot clean. XS/S (55cm).

**Style: PCHA**



ivory/taupe



ivory/dusty blue



ivory/black





UPF 50+

### ***Petite Sanibel***

Resort style for petite sizes. A chin strap of waxed cotton cord adds wind resistance and summer colors make it the perfect beach accessory.

*3¾" brim. Inner drawstring adjusts fit. Packable. 100% paper braid, exclusive of trim. Spot clean. XS/S (55cm).*

**Style: PSANI**



white/beige



coral



camel



UPF 50+

### ***Petite Marseille***

Elevate any outfit with designer stripes and a color-blocked crown. Flexi-Weave fabric packs for easy travel. Waxed cotton cord trim.

*4" brim. Inner drawstring adjusts fit. Packable. 100% polyester, exclusive of trim. Spot clean. XS/S (55cm).*

**Style: PMARS**



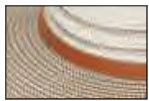
white/beige



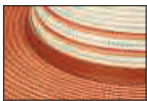
black/natural



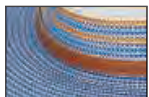
*"Thank you, Wallaroo, for making cute hats for women with small heads! I have always had such a hard time finding hats, and your petite line of hats is the best!"* LEIGH D.



ivory/stone



ivory/coral



ivory/ice blue



ivory/navy



ivory/black

UPF 50+

## Petite Kristy

A Wallaroo classic, this popular and flattering style is well-suited to smaller frames. Faux leather band with metal buckle.

3" brim. Inner drawstring adjusts fit. Packable. 100% polypropylene, exclusive of trim. Spot clean. XS/S (55cm).

**Style: PKRI**





*"The petite size is great! Finally found a hat that is well made, fits well and provides lots of shade without overwhelming my head. I love it. Worth 10 stars in my book."* MAUREEN P.



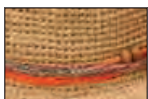
## ***Petite Catalina Cowboy***

Braids, faux suede leather, and colorful beads add a pop of color to the faux suede leather trim of this cowboy style. An adjustable brim makes this hat the perfect accessory.

3" brim. Inner drawstring adjusts fit. Packing not recommended. 100% raffia, exclusive of trim.

Do not wash. XS/S (55cm).

**Style: PCCOW**



natural



mushroom







UNISEX

UPF 50+

## *Petite Palm Beach*

A Wallaroo favorite, timeless style for any occasion. The Flexi-Weave fabric delivers travel-ready comfort with built-in sun protection.

2¾" brim. Wind-resistant adjustable sizing. Packable.  
100% polyester, exclusive of trim. Spot clean. XS/S (55cm).

**Style: PPLMBCH**



white



ivory



beige





white



tan



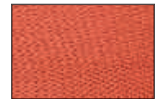
mixed beige



mixed camel



suede



coral



seafoam



hydrangea



mixed aqua



french navy



black

## Petite Victoria

Our modern version of the straw hat is lightweight and ultra-comfortable. The brim is scaled down for petite sizes.

3" brim. Inner drawstring adjusts fit. Packable.  
100% poly-straw. Spot clean. XS/S (55cm).

**Style: PVIC**

*"I have a small head and always have trouble finding hats that are small enough. This one is perfect! I love it - style and fit."* ELLEN R.







## Petite Savannah Visor

Classic stripes make an effortlessly sleek visor design. Velcro® adjusts to fit and a wide brim shades your face from the sun's rays.

4" brim. Velcro strap adjusts fit. Packable. 100% paper braid. Spot clean. XS/S (55cm).

**Style: PSAVVIS**



camel/  
black stripes



black/  
camel stripes

*Roll It! Lay visor out flat, then roll up and secure with the elastic band.*



**UPF 50+**

## Petite Gabi

Graduate from baseball hat casual to fedora sophistication in our popular ponytail hat. Built with Flexi-Weave for effortless travel and durability.

3" brim. Velcro® adjustment. Packable. 100% polyester, exclusive of trim. Spot clean. XS/S (55-56cm).

**Style: PGABI**

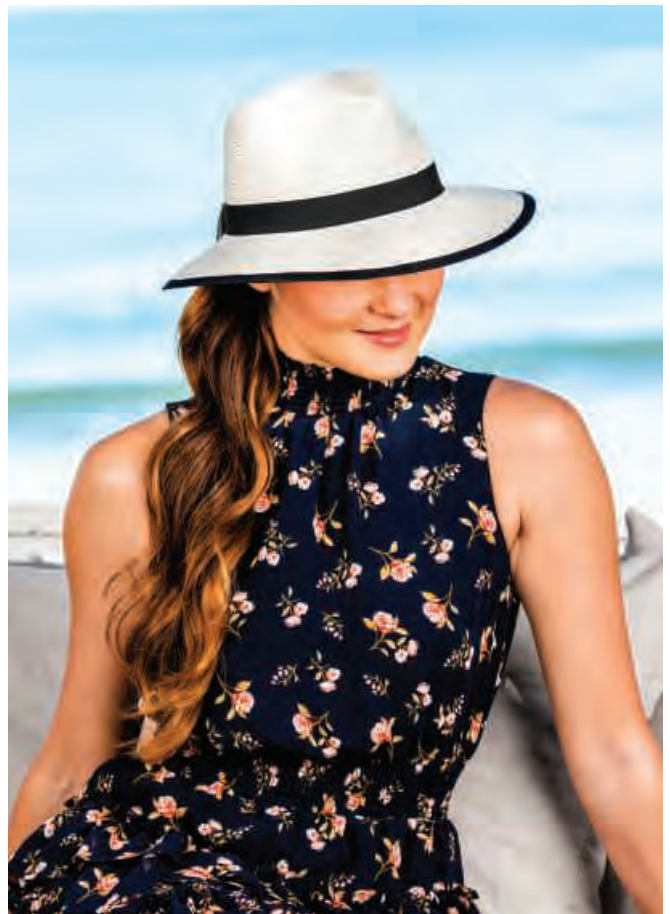


ivory



beige

BACK



*"This is the perfect hat for fall and winter. And if you have a small head the petite is the most perfect answer."* JILL G.



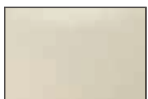
UPF 50+

## *Petite Aspen*

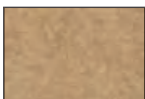
Warm up your fall look in this stunning fedora, now in a smaller size. Made from sturdy, yet soft felt in wardrobe-enhancing neutrals and featuring leather trim.

2¾" brim. Inner drawstring adjusts fit. Packable. 100% wool felt, exclusive of trim. Spot clean. XS/S (55cm).

**Style: PASPE**



winter white



camel



black







UPF 50+

## *Petite Elise*

An extension of our Jane Seymour line, this petite option features a sweeping brim and lightweight Flexi-Weave fabric, offering both timeless romance and exceptional sun protection.

4" brim. Inner drawstring adjusts fit. Packable.  
100% polyester, exclusive of trim. Spot clean.  
XS/S (55cm).

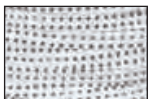
**Style: PELIS**



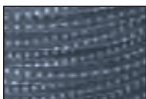
white/beige







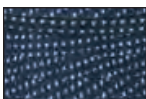
white/  
black dots



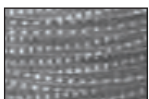
slate/  
white dots



natural/  
brown dots



navy/  
white dots



grey/  
white dots



black/  
white dots

**UPF 50+**

## ***Petite Scrunchie***

The adjustable, wire-edged brim gives this hat its personality. Curvy or straight, choose your most flattering look.

*3½" brim. Inner drawstring adjusts fit. Packable. 100% polyester. Hand wash cold. XS/S (55cm).*

**Style: PSCR**







UPF 50+

## Petite Sedona

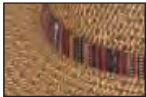
Accented by a striking embroidered band, the Sedona is the perfect addition to your best dressed list.

2¾" brim. Inner drawstring adjusts fit. Packable. 100% paper braid, exclusive of trim. Spot clean. XS/S (55cm).

**Style: PSED**



natural



camel



## Petite Catalina

A long-time favorite scaled down for a wider audience. Crafted from natural raffia with a delicate matching braid at the crown.

3½" brim. Inner drawstring adjusts fit. Packing not recommended. 100% raffia. Do not wash. XS/S (55cm).

**Style: PCAT**



natural



mushroom



## Men's Collection

Strong, structured styles for men that are built to last. Lightweight, comfortable materials make them easy to wear.



NEW

UNISEX

UPF 50+

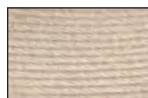
### Sterling

With contrasting navy blue lines, this handsome hat has yacht club vibes with sleek sophistication. Made from our unique Flexi-Weave material, it holds its shape under any travel conditions – from ship to shore and everything in between.

3" brim. Inner drawstring adjusts fit. Packable. 100% polyester, exclusive of trim. Spot clean. M/L (59cm) and L/XL (61cm).

**Style: STLG**

Available October 2025.



mixed camel





UNISEX

UPF 50+

## Palm Beach

This just may be the perfect hat. Made from revolutionary Flexi-Weave fabric, this hat is designed for comfort, travel and durability. Take it anywhere – it's lightweight and packs with ease.

2¾" brim. Wind-resistant adjustable sizing. Packable.

100% polyester, exclusive of trim. Spot clean. M/L (59cm) and L/XL (61cm), also available in women's petite.

**Style: PLMBCH**



ivory



beige



camel



olive



black





UNISEX

UPF 50+

## Baja

Assembled in a co-op outside Guadalajara, Mexico, this handcrafted, all-natural fedora provides excellent sun protection for all your outdoor activities. Chin strap provides extra wind resistance.

*4" brim. Elastic-fit comfort band. Packing not recommended. 100% palm fiber, exclusive of trim. Do not wash. M/L (60cm) and L/XL (62cm).*

**Style: BAJA**



camel



UNISEX

UPF 50+

## Cortez

Handmade in Mexico, this hat delivers with timeless style and earth-friendly sustainability. The turned-up brim and leather band give it a distinctive trilby look.

*2¾" brim. Elastic-fit comfort band. Packing not recommended. 100% palm fiber, exclusive of trim. Do not wash. M/L (59cm) and L/XL (61cm).*

**Style: CORT**



camel





NEW

UNISEX

UPF 50+

## Everett

Introducing a new sustainable and durable bamboo fabric, this hat brings a special touch to the always classic fedora. A blend of neutral tones and a leather band make it the perfect complement to any wardrobe.

3" brim. Inner drawstring adjusts fit. Packable. 100% bamboo, exclusive of trim. Spot clean. M/L (59cm) and L/XL (61cm).

**Style: EVRT**

Available October 2025.



mixed camel







UPF 30+

## Palmer

This lightweight fedora is great for travel - just pack it in your suitcase and go. It bounces right back.

3 1/2" brim. Inner drawstring adjusts fit. Packable. 100% paper braid, exclusive of trim. Spot clean. M/L (59cm) and L/XL (61cm).

**Style: PAL**



natural





*"Really an awesome hat! Great brim width, well made, fully lined, good detailing (band, neck strap), comfortable to wear all day long."* TOM W.



UNISEX

UPF 50+

## Cabo

We've reinvented the classic surf-style hat. Great for travel, it packs easily and has a chin strap for wind resistance. Embroidered trim.

3¼" brim. Inner drawstring adjusts fit. Packable. 100% paper braid, exclusive of trim, cotton lining. Spot clean. M/L (59cm) and L/XL (61cm).

**Style: CABO**



natural/surf trim





UNISEX

## Charlie Trilby

A trilby is a fun style that adds character to any outfit. Part of our popular Charlie collection, the polypropylene fabric is lightweight, sturdy, and can even be worn in the rain. You will be fielding compliments all day!

2" brim. Inner drawstring adjusts fit. Packable. 100% polypropylene, exclusive of trim. Spot clean. M/L (59cm) and L/XL (61cm).

**Style: CHATR**



ivory/olive



ivory/black



*Our Charlie hats are durable, comfortable and suitable for almost any weather.*





UNISEX

UPF 50+

## Carter

A modern twist on the classic fedora, this durable polypropylene hat is built for travel. With a rugged faux leather band and neutral tones, it's a stylish pick for anyone with a thirst for adventure.

3" brim. Inner drawstring adjusts fit. Packable.  
100% polypropylene, exclusive of trim. Spot clean.  
M/L (59cm) and L/XL (61cm).

**Style: CART**



ivory/stone



graphite



UNISEX

UPF 50+

## Logan

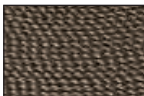
A hat for any adventure. With a wide brim and a waxed cotton chin strap, it provides protection from the elements and stays secure in the wind.

3¼" brim. Inner drawstring adjusts fit. Packable.  
100% polypropylene, exclusive of trim. Spot clean.  
M/L (59cm) and L/XL (61cm).

**Style: LOG**



camel



dark brown







UNISEX

UPF 50+

## Durango

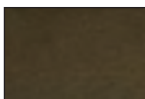
A beautifully hand-constructed design, this felt hat is suitable for mountain trails or the country club. A faux leather band adds a stylish touch.

2½" brim. Inner drawstring adjusts fit. Packable. 100% wool felt, exclusive of trim. Spot clean. M/L (59cm) and L/XL (61cm).

**Style: DUR**



chestnut



olive







UNISEX

UPF 50+

## Avery

Refined ease for sun-soaked afternoons – tailored for the art of unwinding in style. Metal eyelets provide air flow to cool you down. Faux leather trim.

*2½" brim. Velcro® strap adjusts fit. Packing not recommended. 100% Japanese glazed paper, exclusive of trim. Do not wash. M/L (59cm) and L/XL (61cm).*

**Style: AVE**



natural



camel







## UNISEX

### Justin

Everyday style for those with impeccable taste. This jaunty trilby, like many of our hats, works for both men and women. The larger sizes add options for women who don't fit our 58cm hats.

2" brim. Inner drawstring adjusts fit. Packable. 100% paper braid, exclusive of trim. Spot clean. M/L (59cm) and L/XL (61cm).

**Style: JUS**



natural







UPF 50+

## Turner

Elegant design and a tri-tone band deliver a refined and polished look. Choose from two go-to neutrals.

3¼" brim. Inner drawstring adjusts fit. Packing not recommended. 100% paper straw, exclusive of trim. Spot clean. M/L (59cm) and L/XL (61cm).

**Style: TURN**



ivory



camel

*"Lightweight. Well-made.  
Perfect fit. Stylish."*  
JOSEPH M.



UNISEX

UPF 50+

## Outback

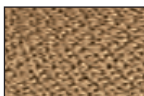
An iconic fedora for the adventurous traveler inspired by the rugged beauty of the Australian Outback. Brown faux suede band.

3" brim. Inner drawstring adjusts fit. Packable. 100% paper braid, exclusive of trim. Spot clean. M/L (59cm) and L/XL (61cm).

**Style: OUT**



natural



brown





UNISEX

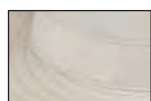
UPF 50+

## Summit

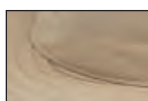
The ultimate hat for braving the elements. Made from lightweight, quick-drying fabric, with an adjustable chin strap, it's easily packable for outdoor adventures where conditions can be unpredictable.

*Brim is 3½" front and back and 2½" on each side. Inner drawstring adjusts fit. Packable. 100% microfiber, exclusive of trim. Hand wash cold. M/L (59cm) and L/XL (61cm).*

**Style: SUM**



stone



khaki



KEY POCKET  
INSIDE CROWN





UPF 50+

## Explorer

There's no adventure this hat can't handle. Wide, microfiber foam brim allows the hat to float in the water. Water repellent and lightweight. Adjustable chin strap provides extra wind resistance.

3" brim. Inner drawstring adjusts fit. Packable. 100% microfiber. Hand wash cold. M/L (59cm) and L/XL (61cm).

**Style: MEXP**



## Jr. Explorer

A smaller version for kids or petites.

2½" brim in the front, 3½" in the back. Elastic toggle adjusts fit. Packable. 100% microfiber. Hand wash cold. S (56cm) fits ages 5-12.

**Style: JREXP**

ADULT ONLY



natural/camel

ADULT/JR.



camel/navy

JR. ONLY

hydrangea/  
white

# Children's Collection

Fun, colorful hats for ages 12 months to 12 years. Protect your child's skin from the harsh outdoor sun.



UPF 50+

## Platypus

Extra-wide brim provides added protection for active toddlers. Velcro® chin strap. Choose from 100% water-resistant, quick-dry microfiber or cotton.

2¼" brim in front, 3¼" back. Crushable. 100% microfiber or cotton. Hand wash cold. 49cm (fits ages 1-2½ years).

**Style: MPLA** Microfiber

**Style: PLA** Cotton

**MICROFIBER**



aqua

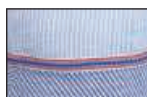


pink

**COTTON**



fuchsia dots



seersucker



UPF 50+

## Sawyer

A charming bucket hat with classic stripes. Choose from 100% water-resistant, quick-dry microfiber or cotton.

2" brim. Inner drawstring adjusts fit. Crushable. 100% microfiber or cotton. Hand wash cold. 54cm (fits ages 4-8 years).

**Style: MSAWY** Microfiber

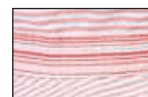
**Style: SAWY** Cotton

**MICROFIBER**



white

**COTTON**



pink stripes



blue stripes



UPF 50+

## Kid's Scrunchie

Like our Women's and Petite Scrunchies, just more adorable!

2½" brim. Inner drawstring adjusts fit. Packable. 100% polyester. Hand wash cold. 52cm (fits ages 2-5 years).

**Style: KSCR**



hydrangea/  
white dots



white/  
fuchsia dots





UPF 50+

## Petite Nantucket

Brightly colored ribbons are sewn together to create brilliant patterns.

2½" brim. Inner drawstring adjusts fit. Crushable. 100% poly-ribbon. Hand wash cold. 52cm (fits ages 2-5 years) and 54cm (fits ages 4-8 years).

**Style: PNAN52** 52cm

**Style: PNAN** 54cm

52CM/54CM

54CM ONLY



rainbow tones



aqua tones



UPF 50+

## Croc & Shark

Clever cut-outs up the cute factor on these adorable embroidered hats. Cotton chin strap.

¾" brim. Inner drawstring adjusts fit. Crushable. 100% cotton, exclusive of trim. Hand wash cold. 52cm (fits ages 2-5 years) and 55cm (fits ages 5-10 years).

**Style: CRO** Pink Crocodile–52cm

**Style: SHA** Shark–52cm

**Style: CRO55** Pink Crocodile–55cm

**Style: SHA55** Shark–55cm



pink crocodile



blue shark



UPF 50+

## Jr. Explorer

A hat for real adventurers. It repels water and has an adjustable chin strap for windy days.

2½" brim in the front, ¾" in the back. Elastic toggle adjusts fit. Packable. 100% microfiber. Hand wash cold. 56cm (fits ages 5-12 years).

**Style: JREXP**



camel/navy

hydrangea/  
white



## Wallaroo Floor Stand

A fully stocked Wallaroo hat stand perfectly displays our wide selection of styles and colors. 360° spinner base, 24 hat hooks, 2 straight hooks for visors, and a mirror panel on both sides. Available for wholesale only.

16" base, 78"H.

**Style: WALLFS**

Floor stand design subject to change.



### SIZING

CM	IN	UK	US	GENERAL
54	21¼	6⅝	6¾	XS
55	21⅝	6¾	6⅞	XS
56	22	6⅞	7	S
57	22½	7	7⅞	S
58	22⅞	7⅞	7¼	M
59	23¼	7¼	7⅝	M
60	23⅝	7⅝	7½	L
61	24	7½	7⅞	L

### PACKING

The hangtag on each hat describes the packing technique for that hat.



#### PACK FLAT

Do not crease, do not roll



#### ROLL IT

Gently flatten and roll



#### STUFF IT

Fill the crown with soft items



#### "SOFT TACO" FOLD

Fold in half gently, do not crease

### ADJUSTING

Most of our hats can be adjusted for size and windy conditions.



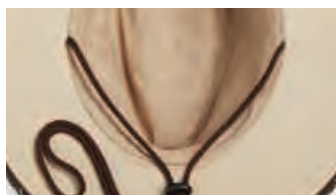
#### DRAWSTRING

Tie to the proper fit



#### ELASTIC CLIP

Custom fit for wind resistance



#### CHIN STRAP

Adjust the toggle under your chin for a secure fit



#### VELCRO®

Peel and stick for the best fit

### CLEANING



#### SPOT CLEAN

Wipe the spot with a damp cloth, dry on low heat



#### HAND WASH COLD

Use cold water and mild liquid soap

*View additional sizing information and demo videos at [wallaroothats.com](http://wallaroothats.com)*



# Wallaroo & Carkella Sales Representatives

## Northern CA, NV

Harmony Hayner  
O: (415) 343-5445  
E: harmony@relishsf.com

## Southern CA

LeeAnn Stevens  
C: (949) 636-4420  
E: leeann.stevens1@icloud.com

## AK, ID, MT, OR, WA

Kristin & Bill Campbell  
C-Kristin: (503) 705-9299  
C-Bill: (503) 636-3083  
E: kristin@strategicsalessolutions.com  
E: bill@strategicsalessolutions.com

## Golf Only: ID, MT, OK, OR, TX, UT, WA, WY

Amy Pennington-Rushing  
C: (512) 413-0979  
E: Amyprush.golfgirl@gmail.com

## CO, WY, Northern NM, UT

Angie Pieper  
C: (303) 819-5368  
E: angie@larrytherep.com

## Golf Only: AZ, CO, NV, Southern NM

Lisa Henderson  
C: (602) 909-9130  
E: lisa@lisahsales.com

## AZ, IA, IL, KS, MN, MO, ND, NE, Southern NM, SD, WI

Kelly Jelacic  
C: (480) 257-6167  
E-1: wallaroomidwest@gmail.com  
E-2: info@jelacic.com

## IN, MI, OH

Tina & Michael Bowen  
C-Tina: (219) 229-8610  
C-Michael: (219) 877-4581  
E: mmcbowen54@outlook.com

## ME, NH

Ann Stewart  
C: (781) 854-6664  
E: astewartmaine@gmail.com

## MA (No Golf), VT

Kristi Rucci  
C: (774) 230-5377  
E: krucci@ivystone.com

## CT, RI, MA (Golf Only)

Sheila Martin  
C: (401) 256-2657  
E: smartingolfs@gmail.com

## DC, DE, MD, NJ, NY, North Coastal NC, PA, VA, WV

Mary Repke  
C: (973) 986-9011  
E: maryerepke@gmail.com

## AL, AR, GA, KY, LA, MS, Southern Coastal NC, OK, SC, TN, TX (No Golf)

Jane Batts & Michael Crowder  
C-Jane: (214) 676-9243  
C-Michael: (214) 507-6561  
E-Jane: janebatts@sbcglobal.net  
E-Michael: michael.crowder2@yahoo.com  
Dallas World Trade Center Showroom 15820

## Caribbean, FL, West Coast FL (Golf & Tennis)

Amy Stickler  
C: (941) 737-5978  
E: ajsales101@gmail.com

## East Coast FL (Golf & Tennis)

Marianne Deibel  
C: (954) 655-1365  
E: marianne.deibel@gmail.com

## HI

Bonnie Bowles  
C: (808) 778-5896  
E: bbsaleshi@gmail.com

## United States Corporate Event Sales

Kirk Kowaleski & Alicia Boydston  
C-Kirk: (913) 302-7879  
C-Alicia: (913) 669-8383  
E-Kirk: kirkk@clothingauthority.net  
E-Alicia: aliciab@clothingauthority.net

## INTERNATIONAL DISTRIBUTORS

**Canada** Modinno Enterprises  
P: (604) 421-6658  
Toll-Free: (800) 565-9511  
E: info@modinno.com  
W: modinno.com

**Dubai** Prosports International  
P: +971 4 347 7737  
E: sales@prosports.ae  
W: www.prosports.ae

**Ecuador** UPF Solutions/Infocity S. A.  
María Sarmiento  
P: 593 93-934-2674 (Ecuador Only)  
P & Whatsapp: 34 631671448  
E: Ventas@infocityguia.com

**Finland** Wanderwear Import Oy  
Iris Rekola  
P: +358 - 43 8264444  
E: iris.rekola@gmail.com

**Israel** FEEL import export Ltd.  
P: 972-3-5582324  
E: sales@feel-shop.co.il  
W: feel-shop.co.il

**Japan** Prograce, Inc.  
P: +81-27-386-9348  
E: contact@prograceinc.com  
W: prograceinc.com

**Mexico** Sol Protector  
P: (33) 3109-2657  
E: ventas@sol-protector.com  
W: sol-protector.com

**Peru** Cosco Dermavip  
P: +51 984510926  
E: dermavipcosco@gmail.com  
F: @dermavipskinshop

**UK/Europe** Masku Ltd, UK  
Lisa Jackson  
P: +44 (0)120 282 1252  
E: sales@wallarohats.co.uk  
W: www.wallarohats.co.uk

## Index

### CARKELLA

Del Mar..... 12  
Emery .....5  
Fairway ..... 2, 11  
Kerrigan.....7  
Lauren.....8  
Lily Visor ..... 13  
Newhall .....4  
Portland ..... 10  
Tahoe .....6  
Vivian .....9

### WALLAROO

Aqua Hat ..... 55  
Aqua Visor..... 54  
Aspen ..... 27  
Avery..... 79  
Baja ..... 72  
Bali ..... 52  
Breton..... 50

Capri..... 14  
Cabo ..... 75  
Caroline..... 48  
Carter..... 77  
Casual Traveler ..... 46  
Catalina ..... 36  
Catalina Cowboy..... 37  
Catalina Cowboy L/XL..... 37  
Charlie ..... 18  
Charlie L/XL ..... 18  
Charlie Trilby..... 76  
Charlie Visor ..... 19  
Charlotte ..... 34  
Colorado ..... 26  
Cortez ..... 72  
Croc & Shark..... 85  
Darby ..... 19  
Denver..... 16  
Durango ..... 78  
Elise ..... 22  
Explorer..... 83  
Everett ..... 73  
Gabi ..... 53  
Greenwich..... 15, 88  
Jr. Explorer..... 83, 85  
Justin ..... 80  
Kid's Scrunchie ..... 84  
Klara..... 48  
Kristy ..... 49  
Lady Brett..... 20  
Lady Jane..... 22  
Laguna..... 34  
Logan..... 77  
Malibu ..... 33  
Margot..... 21  
Marina ..... 24  
Marseille..... 31  
Montecito..... 28  
Monterey..... 17  
Nosara ..... 32  
Outback ..... 81  
Palm Beach ..... 71  
Palmer ..... 74  
Paloma ..... 35  
Petite Aspen..... 66  
Petite Catalina..... 69

Petite Catalina Cowboy.. 62  
Petite Charlie ..... 59  
Petite Darby ..... 58  
Petite Elise..... 67  
Petite Gabi ..... 65  
Petite Kristy ..... 61  
Petite Marseille ..... 60  
Petite Palm Beach..... 63  
Petite Nantucket..... 85  
Petite Sanibel ..... 60  
Petite Savannah Visor ..... 65  
Petite Scrunchie..... 68  
Petite Sedona ..... 69  
Petite Victoria..... 64  
Platypus..... 84  
Quinn..... 23  
Rio ..... 3, 40  
Sanibel..... 52  
Sanibel L/XL..... 52  
Sanitas ..... 57  
Savannah Visor ..... 30  
Sawyer ..... 84  
Scrunchie ..... 47  
Sedona ..... 56  
Sedona L/XL ..... 56  
Sedona Visor ..... 57  
St. Lucia ..... 30  
Sterling..... 70  
Stevie ..... 29  
Summit ..... 82  
Sydney ..... 51  
Tahiti ..... 39  
Tahiti Cowboy..... 38  
Telluride ..... 27  
Tina ..... 39  
Tulum ..... 25  
Turner ..... 81  
Victoria ..... 44  
Victoria Cap ..... 41  
Victoria Diva..... 45  
Victoria Fedora ..... 1, 43  
Victoria Fedora L/XL ..... 43  
Victoria Fedora Diva ..... 42  
Victoria UPF ..... 45



## WALLAROO HAT COMPANY

3155 Sterling Circle  
Boulder, Colorado 80301  
303-494-5949  
1-888-925-2766  
FAX: 303-245-8720  
info@wallarooohats.com  
wallarooohats.com



©2025-2026 by Wallaroo Hat Company, LLC. All rights reserved.

