



Preparation for a stable financial future is crucial, especially for retirement. One effective strategy to ensure a steady income after retirement is the "SIP Today, SWP Tomorrow" approach. This combines Systematic Investment Plans (SIP) with Systematic Withdrawal Plans (SWP) to help you build wealth during your working years and provide regular income during retirement.

## STRATEGY

The "SIP Today, SWP Tomorrow" strategy involves two main steps:



### SIP

**(Systematic Investment Plan)**

Invest a fixed amount regularly while you are working.



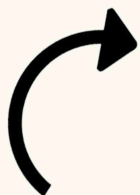
### SWP

**(Systematic Withdrawal Plan)**

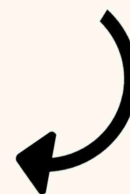
Withdraw a fixed amount regularly after you retire.

This approach helps you save and grow your money through SIPs, and then use SWPs to manage your finances and maintain a steady income during retirement.

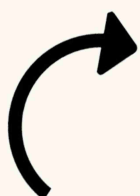
## ILLUSTRATIVE SCENARIOS



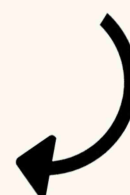
INVESTMENT	
Monthly SIP	₹7,500
SIP Period	30
Total Investment	₹27,00,000
Assumed Return on SIP	13%
Amassed Corpus	₹2,82,11,392



WITHDRAWAL	
Monthly SWP	₹2,03,329
SWP Period	20
Total Withdrawal	₹4,87,98,870
Assumed Return on SWP	9%
Corpus Left	₹2,82,11,392

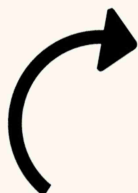


INVESTMENT	
Monthly SIP	₹25,000
SIP Period	20
Total Investment	₹60,00,000
Assumed Return on SIP	13%
Amassed Corpus	₹2,59,62,129



WITHDRAWAL	
Monthly SWP	₹1,87,117
SWP Period	25
Total Withdrawal	₹5,61,35,237
Assumed Return on SWP	9%
Corpus Left	₹2,59,62,129

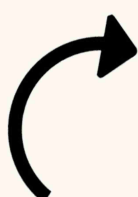
## ILLUSTRATIVE SCENARIOS



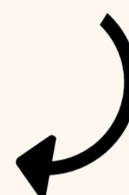
INVESTMENT	
Monthly SIP	₹50,000
SIP Period	15
Total Investment	₹90,00,000
Assumed Return on SIP	13%
Amassed Corpus	₹2,59,26,239



WITHDRAWAL	
Monthly SWP	₹1,86,859
SWP Period	20
Total Withdrawal	₹4,48,46,109
Assumed Return on SWP	9%
Corpus Left	₹2,59,26,239



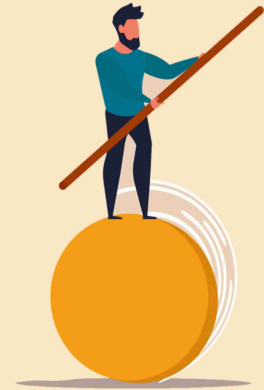
INVESTMENT	
Monthly SIP	₹1,00,000
SIP Period	10
Total Investment	₹1,20,00,000
Assumed Return on SIP	13%
Amassed Corpus	₹2,36,31,112



WITHDRAWAL	
Monthly SWP	₹1,70,317
SWP Period	20
Total Withdrawal	₹4,08,76,096
Assumed Return on SWP	9%
Corpus Left	₹2,36,31,112

## RISK ASSESSMENT

It's important to remember that all investments carry some level of risk, especially those involving the stock market. While the "SIP Today, SWP Tomorrow" strategy can offer a good way to manage your finances, it's not without its uncertainties.



## CONCLUSION

The "SIP Today, SWP Tomorrow" strategy is a smart way to prepare for retirement. By investing regularly through SIPs during your working years and then withdrawing systematically through SWPs in retirement, you can build a strong financial foundation and ensure a steady income. However, always be aware of market risks and plan accordingly. This strategy can be a great tool for those looking to balance their financial planning over time.

---

Disclaimer: The information provided in this article is for educational and informational purposes only. The examples and scenarios presented are illustrative and based on assumed returns, and actual results may vary. Investing in the equity market involves inherent risks, and past performance is not indicative of future results. The SIP Today, SWP Tomorrow strategy is not a guaranteed product, subject to market fluctuations, economic conditions, and other factors that may impact investment outcomes. Investors should carefully consider their financial goals, risk tolerance, and conduct thorough research before implementing any investment strategy. Mutual Fund investments are subject to market risks. Please read the scheme related documents carefully before investing.