

Denex Hemp Company

nina@denex.co  
720-515-0330

Sample 215-020121-002

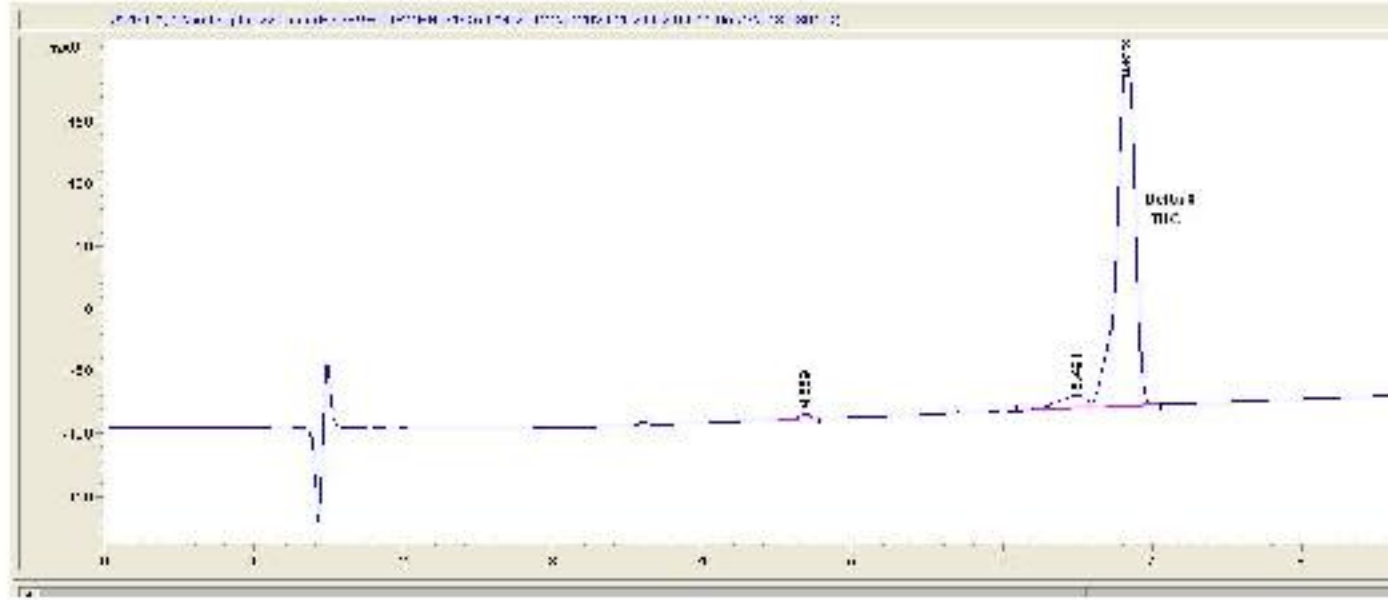
Delta 8 Distillate

Sample Submitted: 02-01-2021; Report Date: 02-01-2021

## Delta 8 Distillate

Distillate

### Chromatogram



### Cannabinoid Profile



### Cannabinoid Profile by HPLC

**0.00%**  
Calculated THC Yield

**0.00%**  
Calculated CBD Yield

**93.61%**  
Total Cannabinoids

Cannabinoid	% wt	mg/g
Delta-8-THC	93.61	936.1
THC	0.0	0.0
<b>Total Cannabinoids</b>	<b>93.61</b>	<b>936.1</b>
<b>Calculated THC Yield</b>	<b>0.00</b>	<b>0.00</b>
<b>Calculated CBD Yield</b>	<b>0.00</b>	<b>0.00</b>

Calculated Maximum THC Yield = THC + 0.877 \* THCA  
Calculated Maximum CBD Yield = CBD + 0.877 \* CBDA

**Marin Analytics, LLC**

250 Bel Marin Keys Blvd, Suite D4  
Novato, CA 94949

415-936-6477 / Support@MarinAnalytics.com

*Sara Biancalana*  
**Sara Biancalana**  
Chief Scientist

This sample has been tested by Marin Analytics, LLC using valid testing methodologies and a quality system. Values reported relate only to the sample tested. Marin Analytics, LLC makes no claims as to the efficacy, safety or other risks associated with any detected or non-detected levels of any compounds reported herein. This Certificate shall not be reproduced except in full, without the written approval of Marin Analytics, LLC.



Customer: DENEX Hemp Co  
 Address: 15373 E Hinsdale  
 Centennial, CO 80112  
 Sample ID: Delta 8  
 Matrix: Concentrates  
 Labnumber: 21B0535-01



## Residual Solvents Profile

Test Conditions: 21°C  
 Extraction Technician: SH  
 Analytical Chemist: SH

Extraction Date(s)	Analysis Date(s)
2/23/2021	2/23/2021

Residual Solvents (GC/MS)	Results
	ug/g
Propane	<86.2
Isobutane	<86.2
Methanol	<86.2
Butane	<86.2
Isopropanol	<86.2
Ethanol	<86.2
2-Methyl Butane	<86.2
Acetonitrile	<86.2
Acetone	<86.2
n-Pentane	<86.2
n-Hexane	<43.1
Tetrahydrofuran	<86.2
Benzene	<0.862
n-Heptane	<86.2
Toluene	<86.2
Ethylbenzene	<86.2
m+p Xylene	<86.2
o-Xylene	<86.2

Gary Brook - Laboratory Director - 2/24/2021

Reporting Limits will vary based on sample extraction weight used for the analysis.  
 Altitude Consulting, LLC utilizes NIST traceable Reference Standards and Certified Reference Material to calibrate analytical instruments along with proven analytical methods. The methods are applied in the most ethical manner following good laboratory practice guidelines. The results of this report are based solely on the sample submitted and cannot be reproduced. Decision Rule: Measurement uncertainty is not accounted for in the reported values. Results are based solely on calculated numbers. Altitude Consulting makes no Statements of conformity. Pesticide, metal, and microbial analyses are subcontracted to ISO 17025 laboratories.



Customer: DENEX Hemp Co  
 Address: 5460 Colorado Blvd  
 Commerce City, CO 80022  
 Sample ID: Delta 8  
 Matrix: Concentrates  
 Labnumber: 21A0184-01



## Metals Profile

Test Conditions: °C

Extraction Technician: MF

Analytical Chemist: MF

Extraction Date(s)	Analysis Date(s)
1/11/2021	1/19/2021

Metals (ICP/MS)	Method Code	Results	Units
Arsenic	ICPMS.1	<20.0	ppb
Cadmium	ICPMS.1	<10.0	ppb
Lead	ICPMS.1	<5.00	ppb
Mercury	ICPMS.1	<5.00	ppb

Limits for metals vary greatly depending on usage of the sample. Altitude Consulting recommends researching federal and state regulatory limits.

**Gary Brook - Laboratory Director - 1/20/2021**

Reporting Limits will vary based on sample extraction weight used for the analysis.

Altitude Consulting, LLC utilizes NIST traceable Reference Standards and Certified Reference Material to calibrate analytical instruments along with proven analytical methods. The methods are applied in the most ethical manner following good laboratory practice guidelines. The results of this report are based solely on the sample submitted and cannot be reproduced. Decision Rule: Measurement uncertainty is not accounted for in the reported values. Results are based solely on calculated numbers. Altitude Consulting makes no Statements of conformity.