



Customer: DENEX Hemp Co
Address: 15373 E Hinsdale
Centennial, CO 80112
Sample ID: CBD Distillate
Matrix: Concentrates
Labnumber: 21D0292-01

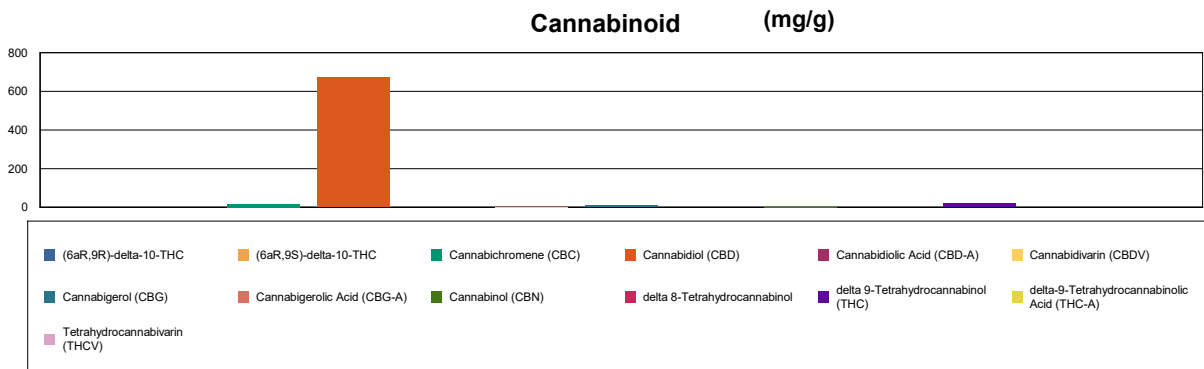
Cannabinoid Profile

Test Conditions: 18°C
Extraction Technician: SH
Analytical Chemist: SH

Extraction Date(s)	Analysis Date(s)
4/22/2021	4/22/2021

Cannabinoids (HPLC)		Results	
	LOD (mg/g)	%	mg/g
Cannabidivarin (CBDV)		0.32	3.21
Cannabidiolic Acid (CBD-A)	<0.40		
Cannabigerolic Acid (CBG-A)	<0.40		
Cannabigerol (CBG)		1.07	10.7
Cannabidiol (CBD)		67.23	672
Tetrahydrocannabivarin (THCV)	<0.40		
Cannabinol (CBN)		0.40	4.04
Cannabichromene (CBC)		1.90	19.0
delta 9-Tetrahydrocannabinol (THC)		2.01	20.1
delta-9-Tetrahydrocannabinolic Acid (THC-A)	<0.40		
delta 8-Tetrahydrocannabinol	<0.40		
(6aR,9S)-delta-10-THC	<0.40		
(6aR,9R)-delta-10-THC	<0.40		
Cannabinoids Total		%	mg/g
Max Active THC (delta-9-tetrahydrocannabinol)		2.01	20.10
Max Active CBD		67.20	672.00
T.Active Cannabinoids		72.60	726.00
Total Cannabinoids		72.90	729.00

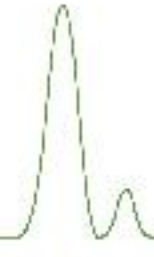
Following USDA guidelines on uncertainty, Altitude Consulting's uncertainty is calculated to be +/- 2% for all cannabinoids using a coverage factor of 2 (95% confidence interval). Measurement uncertainty has not been factored into reported values.
Blank results indicate the compound was below the limit of detection.




Gary Brook - Laboratory Director - 4/23/2021

Reporting Limits will vary based on sample extraction weight used for the analysis.

The results of this report are based solely on the sample submitted and cannot be reproduced. Decision Rule: Measurement uncertainty is not accounted for in the reported values. Results are based solely on calculated numbers. Altitude Consulting makes no Statements of conformity. **Pesticide, metal, and microbial analyses are subcontracted to ISO 17025 laboratories.**



Denex Hemp Company

nina@denex.co
720-515-0330

Sample 215-020121-002

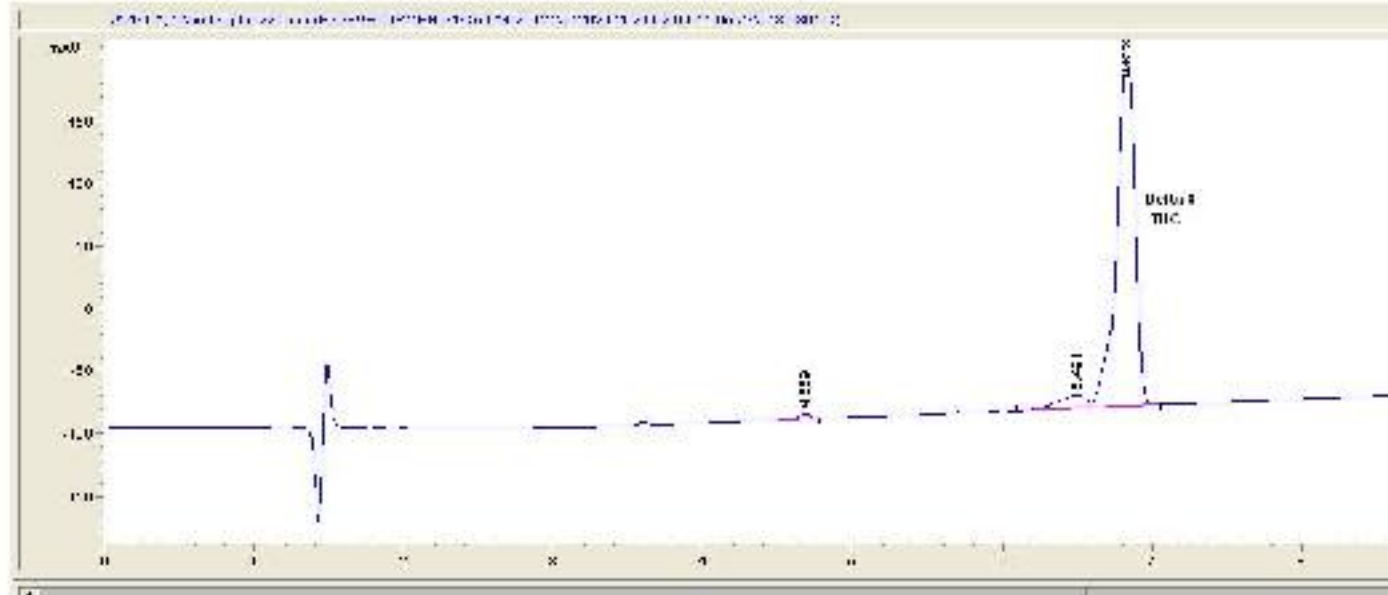
Delta 8 Distillate

Sample Submitted: 02-01-2021; Report Date: 02-01-2021

Delta 8 Distillate

Distillate

Chromatogram



Cannabinoid Profile



Cannabinoid Profile by HPLC

0.00%
Calculated THC Yield

0.00%
Calculated CBD Yield

93.61%
Total Cannabinoids

Cannabinoid	% wt	mg/g
Delta-8-THC	93.61	936.1
THC	0.0	0.0
Total Cannabinoids	93.61	936.1
Calculated THC Yield	0.00	0.00
Calculated CBD Yield	0.00	0.00

Calculated Maximum THC Yield = THC + 0.877 * THCA
Calculated Maximum CBD Yield = CBD + 0.877 * CBDA

Marin Analytics, LLC
250 Bel Marin Keys Blvd, Suite D4
Novato, CA 94949

415-936-6477 / Support@MarinAnalytics.com

Sara Biancalana
Sara Biancalana
Chief Scientist

This sample has been tested by Marin Analytics, LLC using valid testing methodologies and a quality system. Values reported relate only to the sample tested. Marin Analytics, LLC makes no claims as to the efficacy, safety or other risks associated with any detected or non-detected levels of any compounds reported herein. This Certificate shall not be reproduced except in full, without the written approval of Marin Analytics, LLC.



Customer: DENEX Hemp Co
 Address: 15373 E Hinsdale
 Centennial, CO 80112
 Sample ID: Delta 8
 Matrix: Concentrates
 Labnumber: 21B0535-01



Residual Solvents Profile

Test Conditions: 21°C
 Extraction Technician: SH
 Analytical Chemist: SH

Extraction Date(s)	Analysis Date(s)
2/23/2021	2/23/2021

Residual Solvents (GC/MS)	Results
	ug/g
Propane	<86.2
Isobutane	<86.2
Methanol	<86.2
Butane	<86.2
Isopropanol	<86.2
Ethanol	<86.2
2-Methyl Butane	<86.2
Acetonitrile	<86.2
Acetone	<86.2
n-Pentane	<86.2
n-Hexane	<43.1
Tetrahydrofuran	<86.2
Benzene	<0.862
n-Heptane	<86.2
Toluene	<86.2
Ethylbenzene	<86.2
m+p Xylene	<86.2
o-Xylene	<86.2

Gary Brook - Laboratory Director - 2/24/2021

Reporting Limits will vary based on sample extraction weight used for the analysis.
 Altitude Consulting, LLC utilizes NIST traceable Reference Standards and Certified Reference Material to calibrate analytical instruments along with proven analytical methods. The methods are applied in the most ethical manner following good laboratory practice guidelines. The results of this report are based solely on the sample submitted and cannot be reproduced. Decision Rule: Measurement uncertainty is not accounted for in the reported values. Results are based solely on calculated numbers. Altitude Consulting makes no Statements of conformity. Pesticide, metal, and microbial analyses are subcontracted to ISO 17025 laboratories.



Customer: DENEX Hemp Co
 Address: 5460 Colorado Blvd
 Commerce City, CO 80022
 Sample ID: Delta 8
 Matrix: Concentrates
 Labnumber: 21A0184-01



Metals Profile

Test Conditions: °C

Extraction Technician: MF

Analytical Chemist: MF

Extraction Date(s)	Analysis Date(s)
1/11/2021	1/19/2021

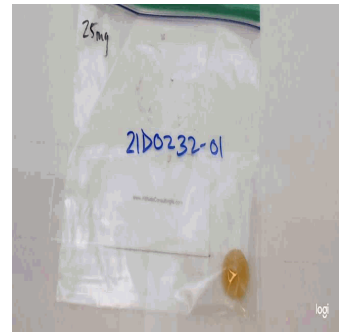
Metals (ICP/MS)	Method Code	Results	Units
Arsenic	ICPMS.1	<20.0	ppb
Cadmium	ICPMS.1	<10.0	ppb
Lead	ICPMS.1	<5.00	ppb
Mercury	ICPMS.1	<5.00	ppb

Limits for metals vary greatly depending on usage of the sample. Altitude Consulting recommends researching federal and state regulatory limits.

Gary Brook - Laboratory Director - 1/20/2021

Reporting Limits will vary based on sample extraction weight used for the analysis.

Altitude Consulting, LLC utilizes NIST traceable Reference Standards and Certified Reference Material to calibrate analytical instruments along with proven analytical methods. The methods are applied in the most ethical manner following good laboratory practice guidelines. The results of this report are based solely on the sample submitted and cannot be reproduced. Decision Rule: Measurement uncertainty is not accounted for in the reported values. Results are based solely on calculated numbers. Altitude Consulting makes no Statements of conformity.



Customer: DENEX Hemp Co
Address: 15373 E Hinsdale
Centennial, CO 80112
Sample ID: 25mg Delta-8 Gummies
Matrix: Edible
Labnumber: 21D0232-01 Total mass or volume per unit (g or mL): 5.1243

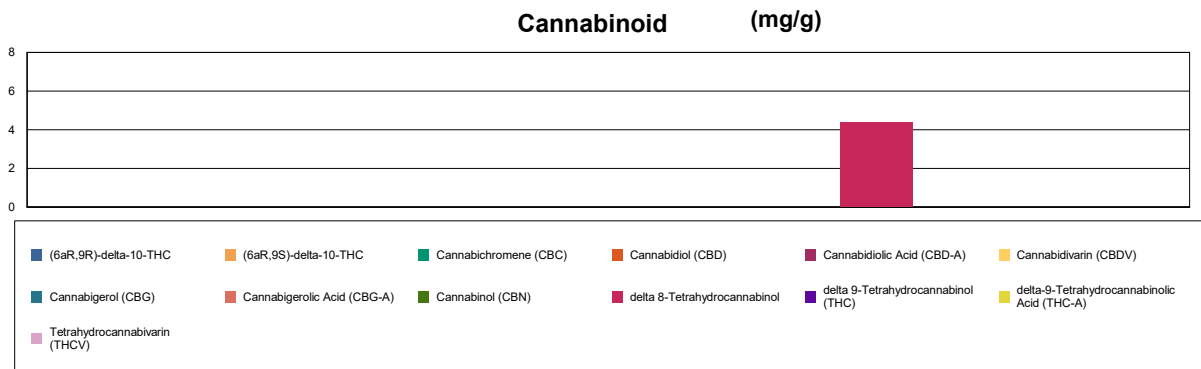
Cannabinoid Profile

Test Conditions: 18°C
Extraction Technician: SH
Analytical Chemist: SH

Extraction Date(s)	Analysis Date(s)
4/16/2021	4/16/2021

Cannabinoids (HPLC)		Results		
	LOD (mg/g)	%	mg/g	mg/Gummy
Cannabidiol (CBD)	<0.070			
Cannabidiolol Acid (CBD-A)	<0.070			
Cannabigerolic Acid (CBG-A)	<0.070			
Cannabigerol (CBG)	<0.070			
Cannabidiol (CBD)	<0.070			
Tetrahydrocannabivarin (THCV)	<0.070			
Cannabinol (CBN)	<0.070			
Cannabichromene (CBC)	<0.070			
delta 9-Tetrahydrocannabinol (THC)	<0.070			
delta-9-Tetrahydrocannabinolic Acid (THC-A)	<0.070			
delta 8-Tetrahydrocannabinol		0.44	4.38	22.4
(6aR,9S)-delta-10-THC	<0.070			
(6aR,9R)-delta-10-THC	<0.070			
Cannabinoids Total		%	mg/g	
Max Active THC (delta-9-tetrahydrocannabinol)		0.00	0.00	
Max Active CBD		0.00	0.00	
T.Active Cannabinoids		0.00	0.00	
Total Cannabinoids		0.44	4.38	

Following USDA guidelines on uncertainty, Altitude Consulting's uncertainty is calculated to be +/- 2% for all cannabinoids using a coverage factor of 2 (95% confidence interval). Measurement uncertainty has not been factored into reported values.
 Blank results indicate the compound was below the limit of detection.




Gary Brook - Laboratory Director - 4/17/2021

Reporting Limits will vary based on sample extraction weight used for the analysis.

The results of this report are based solely on the sample submitted and cannot be reproduced. Decision Rule: Measurement uncertainty is not accounted for in the reported values. Results are based solely on calculated numbers. Altitude Consulting makes no Statements of conformity. Pesticide, metal, and microbial analyses are subcontracted to ISO 17025 laboratories.