



Land For Sale

Eagle Mountain Town Center Marketplace

Eagle Mountain Blvd.
& Pony Express Pkwy.
(NWC)

Contact:

Zach Beaudry
Executive Vice President
+1 801 947 8319
zach.beaudry@colliers.com

Colliers
6440 S. Millrock Dr., Suite 500
Salt Lake City, UT 84121
Main: +1 801 947 8300
colliers.com

Property Highlights

- 3 - 8 Acres available
- \$20.00 per SF
- Dominant intersection for the trade area
- CR Zone Commercial Regional
- Anchored by:



Demographics	1 Mile	3 Mile	5 Mile
<u>Population</u>			
2023 Population	12,467	19,936	46,772
2028 Projected	21,665	32,339	61,778
<u>Households</u>			
2023 Population	3,121	45,121	11,363
2028 Projected	5,553	8,138	15,350
<u>Income</u>			
2023 Median HHI	\$79,814	\$83,454	\$90,754
2023 Average HHI	\$93,048	\$104,969	\$115,791
Per Capita Income	\$23,242	\$25,388	\$27,666

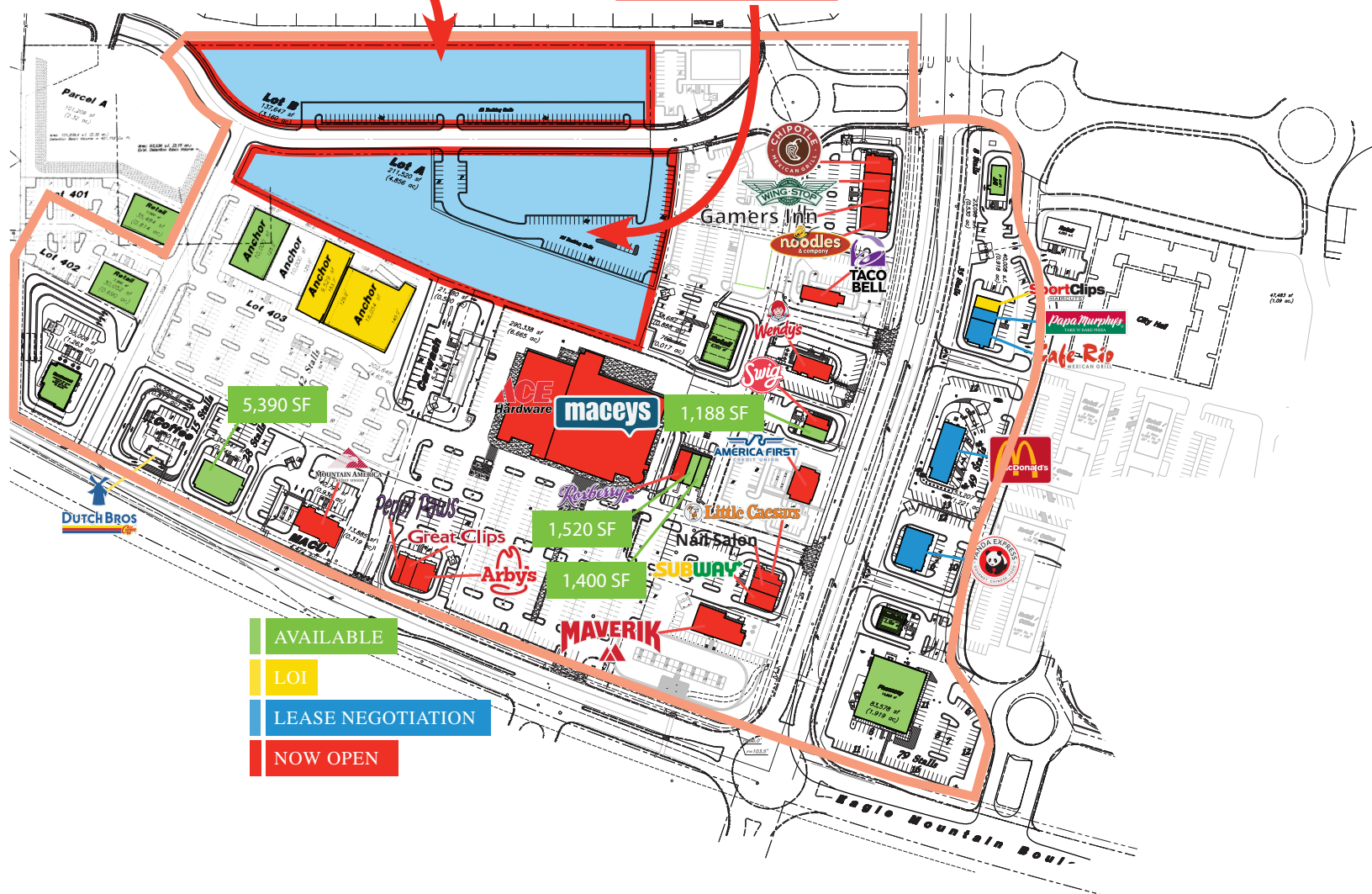


Land For Sale

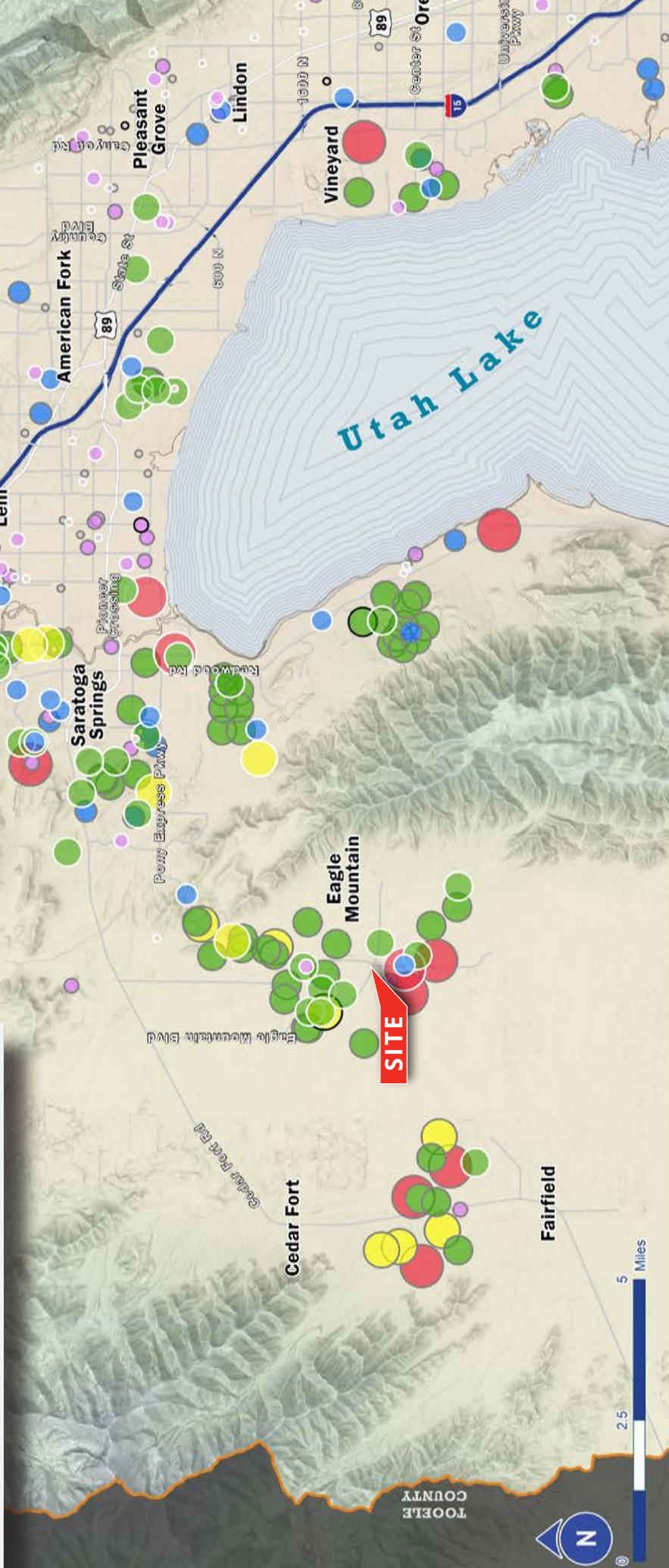
Site Plan

Lot B
3.16 Acres

Lot A
4.856 Acres

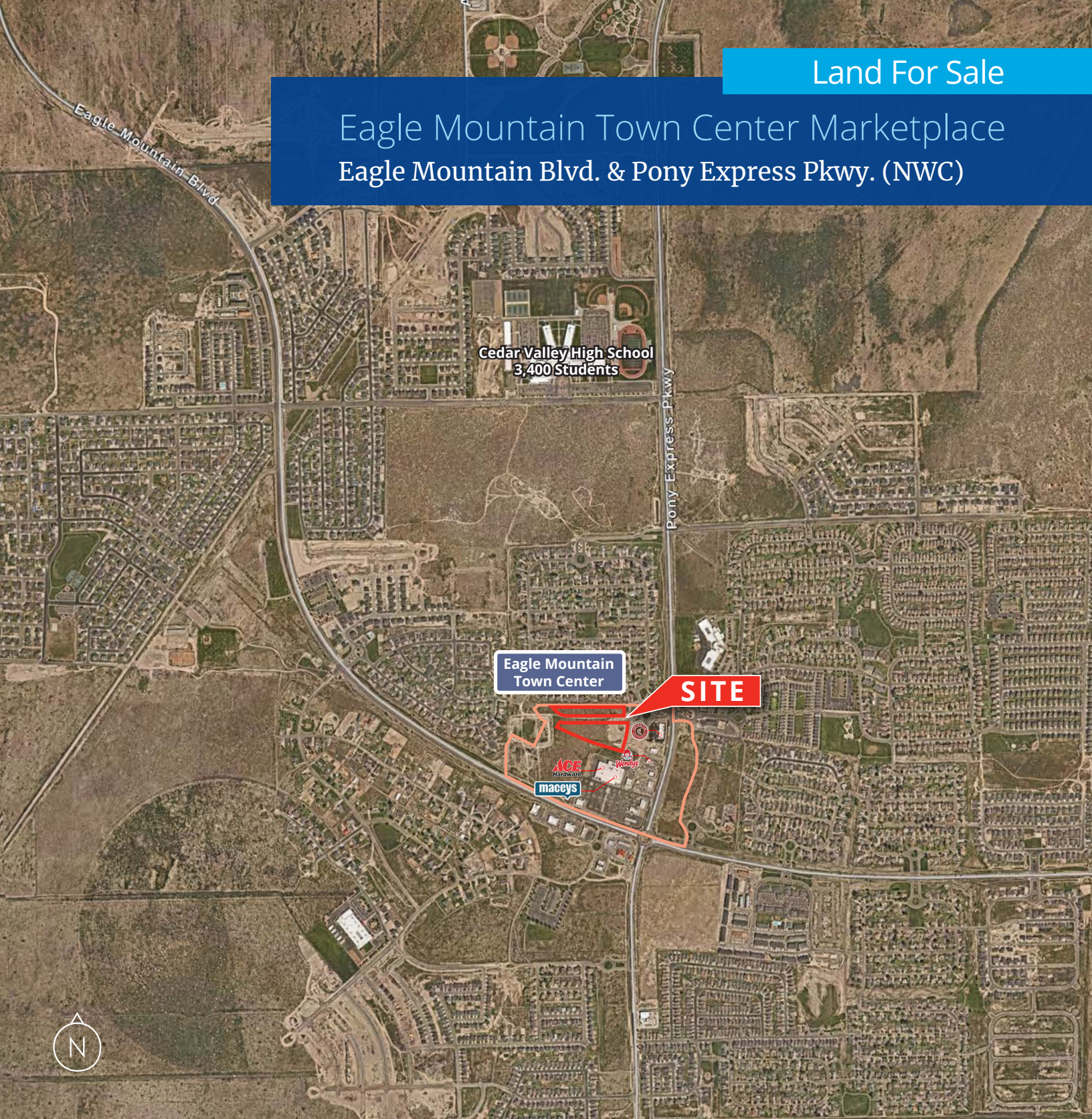


Northern Utah County, Utah



Land For Sale

Eagle Mountain Town Center Marketplace Eagle Mountain Blvd. & Pony Express Pkwy. (NWC)



Colliers
6440 S. Millrock Dr., Suite 500
Salt Lake City, UT 84121
Main: +1 801 947 8300
colliers.com

Contact:

Zach Beaudry
Executive Vice President
+1 801 947 8319
zach.beaudry@colliers.com

This document has been prepared by Colliers International for advertising and general information only. Colliers International makes no guarantees, representations or warranties of any kind, expressed or implied, regarding the information including, but not limited to, warranties of content, accuracy and reliability. Any interested party should undertake their own inquiries as to the accuracy of the information. Colliers International excludes unequivocally all inferred or implied terms, conditions and warranties arising out of this document and excludes all liability for loss and damages arising there from. This publication is the copyrighted property of Colliers International and/or its licensor(s). ©2024. All rights reserved.