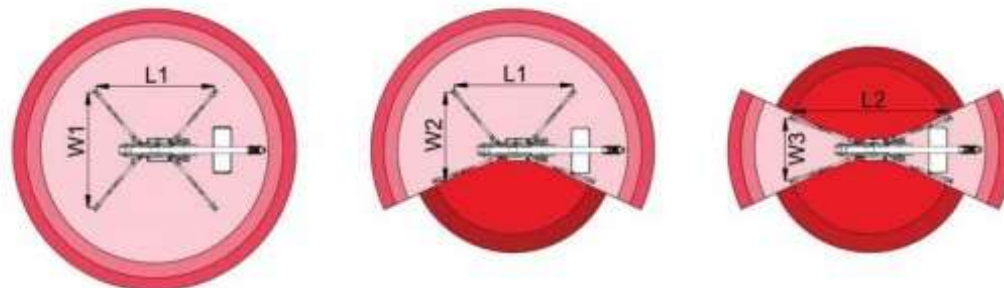
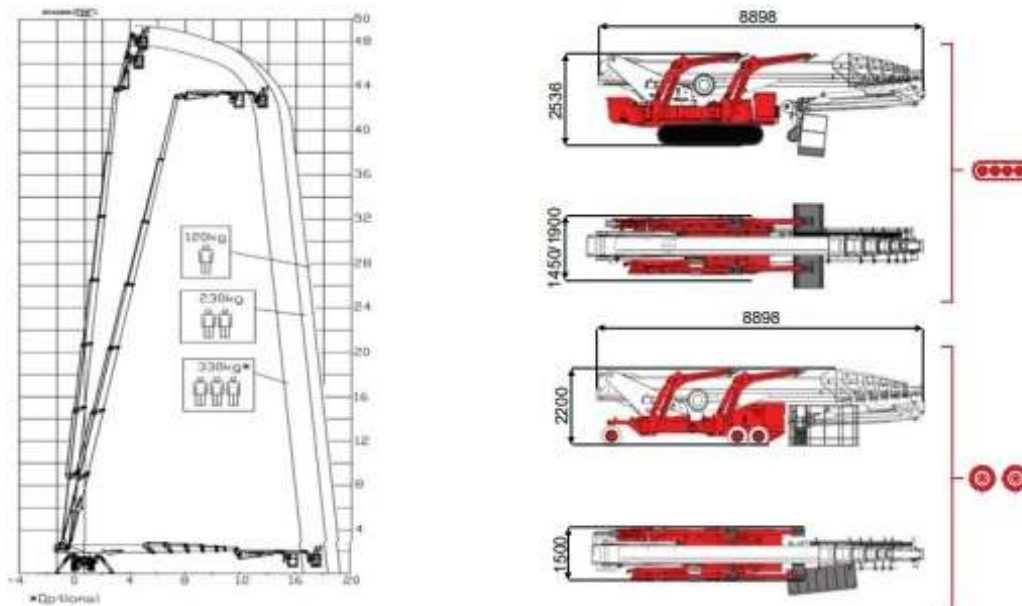




49,2 m ↑
19,3 m →
330 Kg 🧑🧑🧑



16000 mm	18200 mm	19300 mm	13894 mm	18200 mm	L1	L2	W1	W2	W3
330 kg	230 kg	120 kg	330 kg	120/230 kg	6258 mm	8346 mm	5000 mm	4000 mm	4000 mm

BI-ENERGY Diesel+AC																		
XTJ 48/C-R																		
	49,2 m	19,3 m	330 kg	175°	660°	240x70 cm	90°+80°	4,1-5,3 m	15%	40%	1,5 km/h	13650 kg	80 kN	4,09 kN/m ²	6,39 kN/m ²	1450/1900 mm	8898 mm	2536 mm

Battery type	Battery charge	Add. Weight	Autonomy	Charging time	Electropump
ECO	DC+AC	400 kg	6-7 h endless	7h	48V 9 kW
	48V 270 A/h 5h				