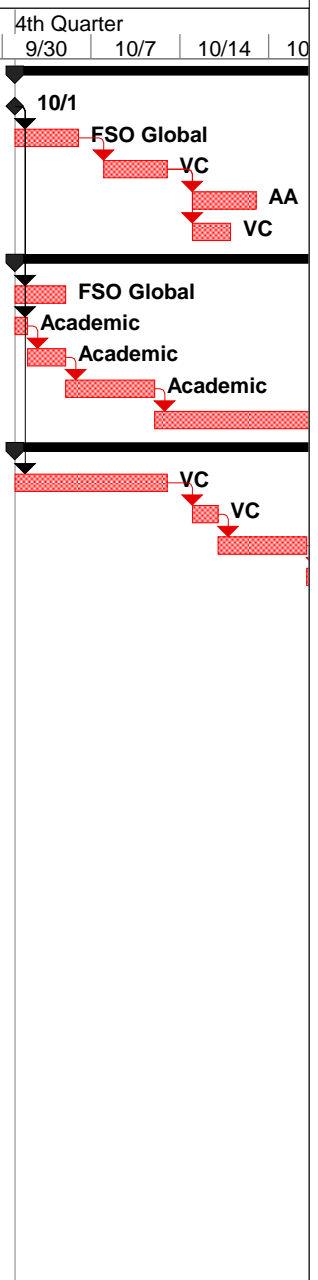


| ID | Task Name | Duration | Start | 4th Quarter | | | | |
|----|--------------------------------|-----------------|---------------------|-------------|------|------|-------|-------|
| | | | | 9/23 | 9/30 | 10/7 | 10/14 | 10/21 |
| 1 | Feasibility | 20 days | Mon 10/1/12 | | | | | |
| 2 | Placement 1 Start-Up | 0 days | Mon 10/1/12 | | | | | |
| 3 | Investment Applications | 5 days | Mon 10/1/12 | | | | | |
| 4 | Investigate Bank Options | 5 days | Mon 10/8/12 | | | | | |
| 5 | Accountant | 5 days | Mon 10/15/12 | | | | | |
| 6 | Application Accepted | 3 days | Mon 10/15/12 | | | | | |
| 7 | Design Synopsis | 20 days | Mon 10/1/12 | | | | | |
| 8 | Host | 4 days | Mon 10/1/12 | | | | | |
| 9 | Assignment | 1 day | Mon 10/1/12 | | | | | |
| 10 | Design Approach | 3 days | Tue 10/2/12 | | | | | |
| 11 | Performance Requirements | 5 days | Fri 10/5/12 | | | | | |
| 12 | Schematic Design | 11 days | Fri 10/12/12 | | | | | |
| 13 | Team Organization | 33 days | Mon 10/1/12 | | | | | |
| 14 | Qualify Marketing Firms | 10 days | Mon 10/1/12 | | | | | |
| 15 | Select Marketer | 2 days | Mon 10/15/12 | | | | | |
| 16 | Qualify Design Firms | 5 days | Wed 10/17/12 | | | | | |
| 17 | Select Design Teams | 2 days | Wed 10/24/12 | | | | | |
| 18 | Qualify FSO Manufacturer Teams | 5 days | Fri 10/26/12 | | | | | |
| 19 | Select FSO Manufacturer Teams | 2 days | Fri 11/2/12 | | | | | |
| 20 | Qualify FSD Manufacturers | 5 days | Tue 11/6/12 | | | | | |
| 21 | Select FSD Manufacturer | 2 days | Tue 11/13/12 | | | | | |
| 22 | Market Research | 57 days | Wed 11/14/12 | | | | | |
| 23 | Placement 2 Feasibility | 0 days | Wed 11/14/12 | | | | | |
| 24 | Purpose | 10 days | Thu 11/15/12 | | | | | |
| 25 | Regulations | 10 days | Thu 11/29/12 | | | | | |
| 26 | Data/Telecomm Criteria | 10 days | Thu 12/13/12 | | | | | |
| 27 | Bandwidth | 2 days | Thu 12/27/12 | | | | | |
| 28 | Addressing | 3 days | Mon 12/31/12 | | | | | |
| 29 | Data Entry | 10 days | Thu 1/3/13 | | | | | |
| 30 | Write-up | 5 days | Thu 12/27/12 | | | | | |
| 31 | Target Market | 10 days | Thu 1/3/13 | | | | | |
| 32 | World Markets | 5 days | Thu 1/3/13 | | | | | |
| 33 | Focus Groups | 12 days | Thu 1/17/13 | | | | | |
| 34 | Security | 2 days | Thu 1/17/13 | | | | | |
| 35 | Ease of Use | 2 days | Mon 1/21/13 | | | | | |
| 36 | Appearance | 2 days | Wed 1/23/13 | | | | | |
| 37 | Financial Services | 2 days | Fri 1/25/13 | | | | | |
| 38 | Marketing Summary | 4 days | Tue 1/29/13 | | | | | |
| 39 | Full-Scale Development | 285 days | Fri 2/1/13 | | | | | |



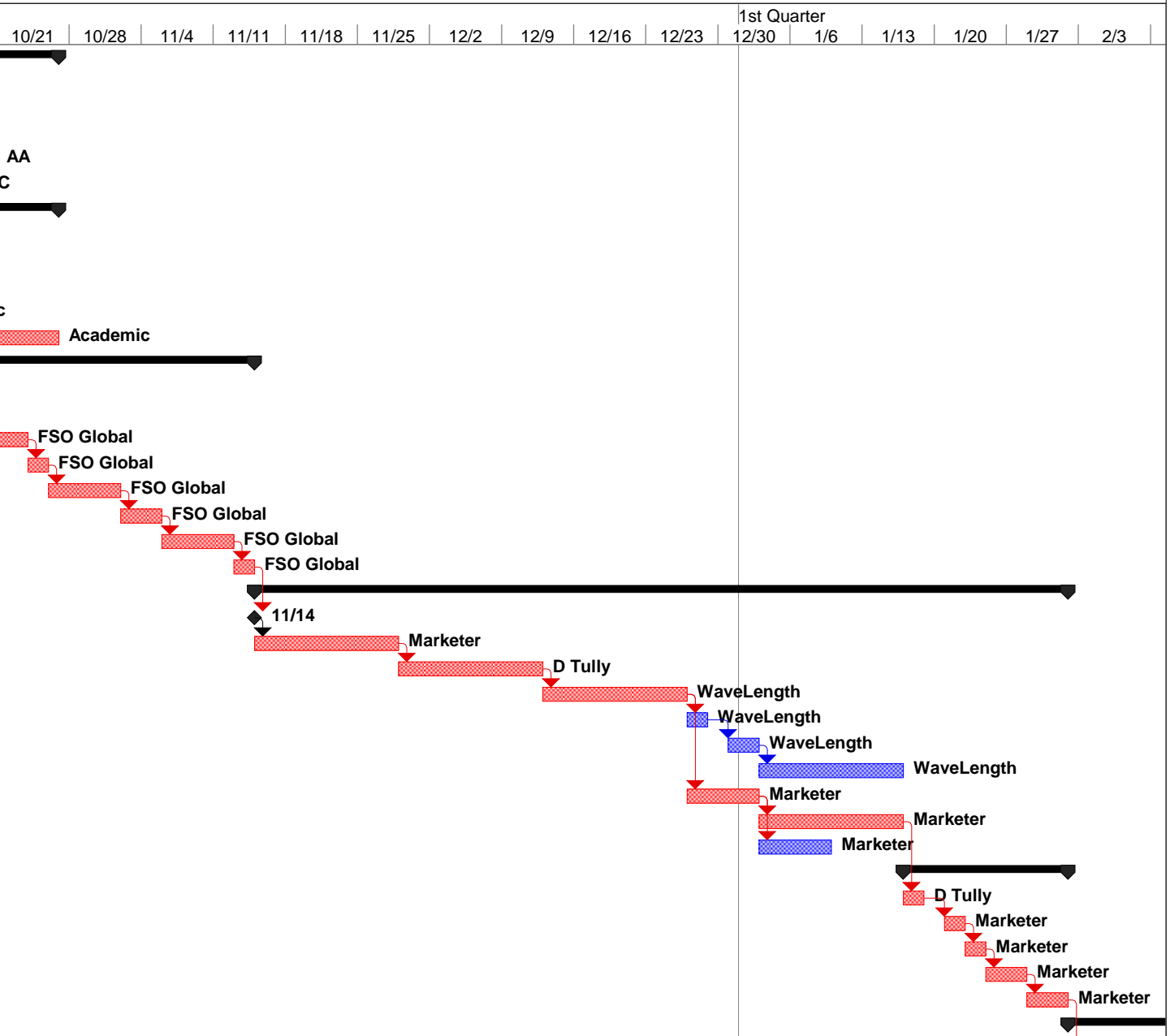
| | | | | |
|---|-------------------------|--|-----------------------|--|
| Project: Cats-i FSO Critical Path Sche Date: Sat 8/12/17 | Task | | Inactive Milestone | |
| | Critical Task | | Inactive Milestone | |
| | Milestone | | Inactive Summary | |
| | Summary | | Manual Task | |
| | Rolled Up Task | | Duration-only | |
| | Rolled Up Critical Task | | Manual Summary Rollup | |
| | Rolled Up Milestone | | Manual Summary | |
| | Rolled Up Progress | | Start-only | |
| | Split | | Finish-only | |
| | External Tasks | | External Tasks | |
| | Project Summary | | External Milestone | |
| | Group By Summary | | Progress | |
| | Inactive Task | | Deadline | |

| ID | Task Name | Duration | Start | 4th Quarter | | | | |
|----|--|-----------------|--------------------|-------------|------|------|-------|-------|
| | | | | 9/23 | 9/30 | 10/7 | 10/14 | 10/21 |
| 40 | Placement 3 Application | 0 days | Fri 2/1/13 | | | | | |
| 41 | Compound Oculus DD | 25 days | Mon 2/4/13 | | | | | |
| 42 | Oculus Array | 5 days | Mon 2/4/13 | | | | | |
| 43 | Transmitter | 5 days | Mon 2/4/13 | | | | | |
| 44 | Receiver | 5 days | Mon 2/4/13 | | | | | |
| 45 | Monocular | 5 days | Mon 2/4/13 | | | | | |
| 46 | Range Finder | 5 days | Mon 2/4/13 | | | | | |
| 47 | Integrate Oculus Components | 7 days | Mon 2/11/13 | | | | | |
| 48 | Focused Collimator | 10 days | Mon 2/11/13 | | | | | |
| 49 | Linkage | 5 days | Mon 2/11/13 | | | | | |
| 50 | Rotor Integration | 20 days | Mon 2/11/13 | | | | | |
| 51 | Compound Oculus CD-Build | 84 days | Mon 3/11/13 | | | | | |
| 52 | Window | 4 days | Mon 3/11/13 | | | | | |
| 53 | Electrostatic Cleaning | 10 days | Fri 3/15/13 | | | | | |
| 54 | Focused Collimator | 20 days | Fri 3/29/13 | | | | | |
| 55 | Linkage | 10 days | Fri 4/26/13 | | | | | |
| 56 | Rotor Integration | 40 days | Fri 5/10/13 | | | | | |
| 57 | Satellite Test Article DD | 40 days | Mon 2/4/13 | | | | | |
| 58 | Mirror Cell | 40 days | Mon 2/4/13 | | | | | |
| 59 | Truss | 20 days | Mon 2/4/13 | | | | | |
| 60 | Stabilization Design | 40 days | Mon 2/4/13 | | | | | |
| 61 | Satellite Test Article CD-Build | 80 days | Mon 3/4/13 | | | | | |
| 62 | Mirror Cell | 40 days | Mon 4/1/13 | | | | | |
| 63 | Truss | 20 days | Mon 3/4/13 | | | | | |
| 64 | Stabilization Design | 30 days | Mon 4/1/13 | | | | | |
| 65 | Truss:Mirror Cell Integration | 20 days | Mon 3/4/13 | | | | | |
| 66 | Programming | 30 days | Mon 4/1/13 | | | | | |
| 67 | Assembly | 40 days | Mon 4/1/13 | | | | | |
| 68 | Ground Testing | 20 days | Mon 5/27/13 | | | | | |
| 69 | Fixed Shutter Dome DD | 86 days | Mon 2/4/13 | | | | | |
| 70 | Pointing and Control | 16 days | Mon 2/4/13 | | | | | |
| 71 | Bearings | 5 days | Tue 2/26/13 | | | | | |
| 72 | Motor Selection | 5 days | Tue 3/5/13 | | | | | |
| 73 | Tolerances | 15 days | Tue 3/12/13 | | | | | |
| 74 | Drive Linkage | 11 days | Tue 4/2/13 | | | | | |
| 75 | Weather Sensor | 8 days | Wed 4/17/13 | | | | | |
| 76 | Sealing System | 14 days | Mon 4/29/13 | | | | | |
| 77 | Material Selection | 12 days | Fri 5/17/13 | | | | | |
| 78 | Fixed Shutter Dome CD-Build | 176 days | Fri 7/5/13 | | | | | |

| | | | | |
|---|-------------------------|--|-----------------------|--|
| Project: Cats-i FSO Critical Path Sche Date: Sat 8/12/17 | Task | | Inactive Milestone | |
| | Critical Task | | Inactive Milestone | |
| | Milestone | | Inactive Summary | |
| | Summary | | Manual Task | |
| | Rolled Up Task | | Duration-only | |
| | Rolled Up Critical Task | | Manual Summary Rollup | |
| | Rolled Up Milestone | | Manual Summary | |
| | Rolled Up Progress | | Start-only | |
| | Split | | Finish-only | |
| | External Tasks | | External Tasks | |
| | Project Summary | | External Milestone | |
| | Group By Summary | | Progress | |
| | Inactive Task | | Deadline | |

| ID | Task Name | Duration | Start | 4th Quarter | | | | |
|-----|------------------------------|-----------------|--------------------|-------------|------|------|-------|-------|
| | | | | 9/23 | 9/30 | 10/7 | 10/14 | 10/21 |
| 79 | FSO Integration | 15 days | Fri 7/5/13 | | | | | |
| 80 | Pointing and Control | 60 days | Fri 7/26/13 | | | | | |
| 81 | Bearings | 4 days | Fri 7/26/13 | | | | | |
| 82 | Motor Selection | 4 days | Thu 8/1/13 | | | | | |
| 83 | Tolerances | 13 days | Wed 8/7/13 | | | | | |
| 84 | Drive Linkage | 10 days | Mon 8/26/13 | | | | | |
| 85 | Weather Sensor | 3 days | Mon 9/9/13 | | | | | |
| 86 | Sealing System | 12 days | Thu 9/12/13 | | | | | |
| 87 | Tooling Method Selection | 5 days | Mon 9/30/13 | | | | | |
| 88 | Tool Design | 20 days | Mon 10/7/13 | | | | | |
| 89 | Injection Molding | 8 days | Mon 11/4/13 | | | | | |
| 90 | Test Form | 2 days | Thu 11/14/13 | | | | | |
| 91 | Test Article | 20 days | Mon 11/18/13 | | | | | |
| 92 | Test Cycle | 20 days | Mon 12/16/13 | | | | | |
| 93 | Modifications | 10 days | Mon 1/13/14 | | | | | |
| 94 | Test Cycle | 10 days | Mon 1/27/14 | | | | | |
| 95 | Produce Field Test Articles | 20 days | Mon 2/10/14 | | | | | |
| 96 | Field Testing | 450 days | Mon 10/1/12 | | | | | |
| 97 | Placement 4 Testing | 0 days | Fri 3/7/14 | | | | | |
| 98 | Test Article | 20 days | Mon 10/1/12 | | | | | |
| 99 | Test Cycle | 20 days | Mon 10/29/12 | | | | | |
| 100 | Modifications | 10 days | Mon 11/26/12 | | | | | |
| 101 | Test Cycle | 10 days | Mon 12/10/12 | | | | | |
| 102 | Produce Field Test Articles | 20 days | Mon 12/24/12 | | | | | |
| 103 | London | 10 days | Mon 3/10/14 | | | | | |
| 104 | Test Article to ISS or Other | 60 days | Mon 6/24/13 | | | | | |
| 105 | New York | 10 days | Mon 3/10/14 | | | | | |
| 106 | Cost Analysis | 10 days | Mon 3/24/14 | | | | | |
| 107 | Pricing | 55 days | Mon 4/7/14 | | | | | |
| 108 | Sales Strategy | 15 days | Mon 4/7/14 | | | | | |
| 109 | Beta Distribution | 40 days | Mon 4/28/14 | | | | | |
| 110 | NTP | 40 days | Fri 6/20/14 | | | | | |
| 111 | Manufacture Decision | 0 days | Fri 6/20/14 | | | | | |
| 112 | Production Sequence | 20 days | Mon 6/23/14 | | | | | |
| 113 | Inventory Control | 10 days | Mon 6/23/14 | | | | | |
| 114 | Quality Assurance | 20 days | Mon 6/23/14 | | | | | |
| 115 | Final Coordination | 20 days | Mon 7/21/14 | | | | | |
| 116 | Notice to Proceed | 0 days | Fri 8/15/14 | | | | | |

| | | | | |
|---|-------------------------|--|-----------------------|--|
| Project: Cats-i FSO Critical Path Sche Date: Sat 8/12/17 | Task | | Inactive Milestone | |
| | Critical Task | | Inactive Milestone | |
| | Milestone | | Inactive Summary | |
| | Summary | | Manual Task | |
| | Rolled Up Task | | Duration-only | |
| | Rolled Up Critical Task | | Manual Summary Rollup | |
| | Rolled Up Milestone | | Manual Summary | |
| | Rolled Up Progress | | Start-only | |
| | Split | | Finish-only | |
| | External Tasks | | External Tasks | |
| | Project Summary | | External Milestone | |
| | Group By Summary | | Progress | |
| | Inactive Task | | Deadline | |



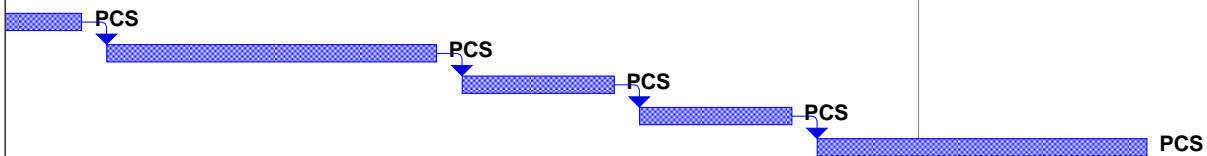
| | | | | |
|---|-------------------------|--|-----------------------|--|
| Project: Cats-i FSO Critical Path Sche Date: Sat 8/12/17 | Task | | Inactive Milestone | |
| | Critical Task | | Inactive Milestone | |
| | Milestone | | Inactive Summary | |
| | Summary | | Manual Task | |
| | Rolled Up Task | | Duration-only | |
| | Rolled Up Critical Task | | Manual Summary Rollup | |
| | Rolled Up Milestone | | Manual Summary | |
| | Rolled Up Progress | | Start-only | |
| | Split | | Finish-only | |
| | External Tasks | | External Tasks | |
| | Project Summary | | External Milestone | |
| | Group By Summary | | Progress | |
| | Inactive Task | | Deadline | |



Project: Cats-i FSO Critical Path Sche
Date: Sat 8/12/17

| | | | |
|-------------------------|--|-----------------------|--|
| Task | | Inactive Milestone | |
| Critical Task | | Inactive Milestone | |
| Milestone | | Inactive Summary | |
| Summary | | Manual Task | |
| Rolled Up Task | | Duration-only | |
| Rolled Up Critical Task | | Manual Summary Rollup | |
| Rolled Up Milestone | | Manual Summary | |
| Rolled Up Progress | | Start-only | |
| Split | | Finish-only | |
| External Tasks | | External Tasks | |
| Project Summary | | External Milestone | |
| Group By Summary | | Progress | |
| Inactive Task | | Deadline | |

| | | | | | | | | | | | | | | | | | |
|-------|-------|------|-------|-------|-------|------|------|-------|-------|-------------|--|-------|-----|------|------|------|-----|
| 10/21 | 10/28 | 11/4 | 11/11 | 11/18 | 11/25 | 12/2 | 12/9 | 12/16 | 12/23 | 1st Quarter | | 12/30 | 1/6 | 1/13 | 1/20 | 1/27 | 2/3 |
|-------|-------|------|-------|-------|-------|------|------|-------|-------|-------------|--|-------|-----|------|------|------|-----|



Project: Cats-i FSO Critical Path Sche
Date: Sat 8/12/17

| | | | |
|-------------------------|--|-----------------------|--|
| Task | | Inactive Milestone | |
| Critical Task | | Inactive Milestone | |
| Milestone | | Inactive Summary | |
| Summary | | Manual Task | |
| Rolled Up Task | | Duration-only | |
| Rolled Up Critical Task | | Manual Summary Rollup | |
| Rolled Up Milestone | | Manual Summary | |
| Rolled Up Progress | | Start-only | |
| Split | | Finish-only | |
| External Tasks | | External Tasks | |
| Project Summary | | External Milestone | |
| Group By Summary | | Progress | |
| Inactive Task | | Deadline | |

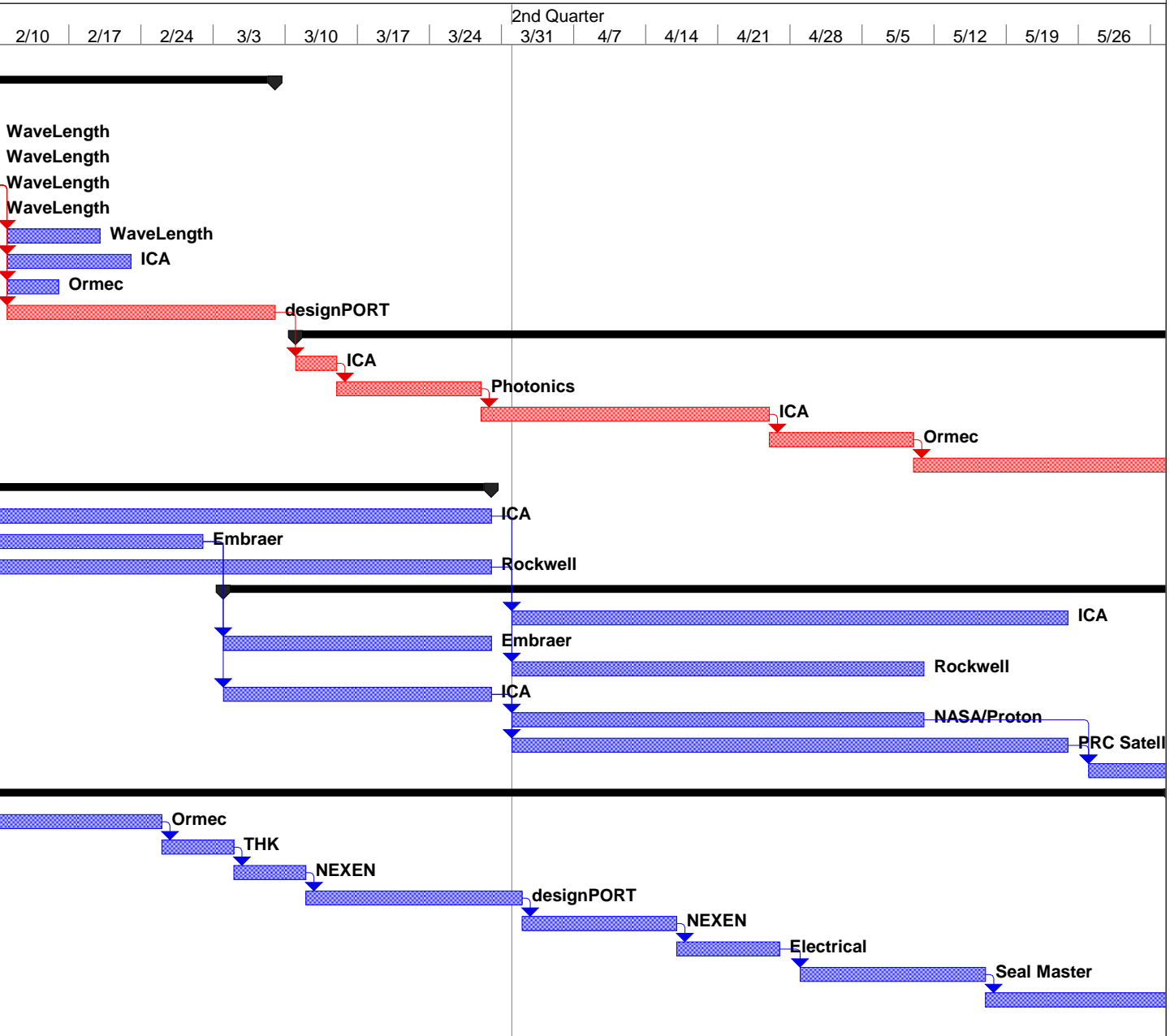
2nd Quarter

2/10 | 2/17 | 2/24 | 3/3 | 3/10 | 3/17 | 3/24 | 3/31 | 4/7 | 4/14 | 4/21 | 4/28 | 5/5 | 5/12 | 5/19 | 5/26

er

Project: Cats-i FSO Critical Path Sche
Date: Sat 8/12/17

| | | | |
|-------------------------|--|-----------------------|--|
| Task | | Inactive Milestone | |
| Critical Task | | Inactive Milestone | |
| Milestone | | Inactive Summary | |
| Summary | | Manual Task | |
| Rolled Up Task | | Duration-only | |
| Rolled Up Critical Task | | Manual Summary Rollup | |
| Rolled Up Milestone | | Manual Summary | |
| Rolled Up Progress | | Start-only | |
| Split | | Finish-only | |
| External Tasks | | External Tasks | |
| Project Summary | | External Milestone | |
| Group By Summary | | Progress | |
| Inactive Task | | Deadline | |

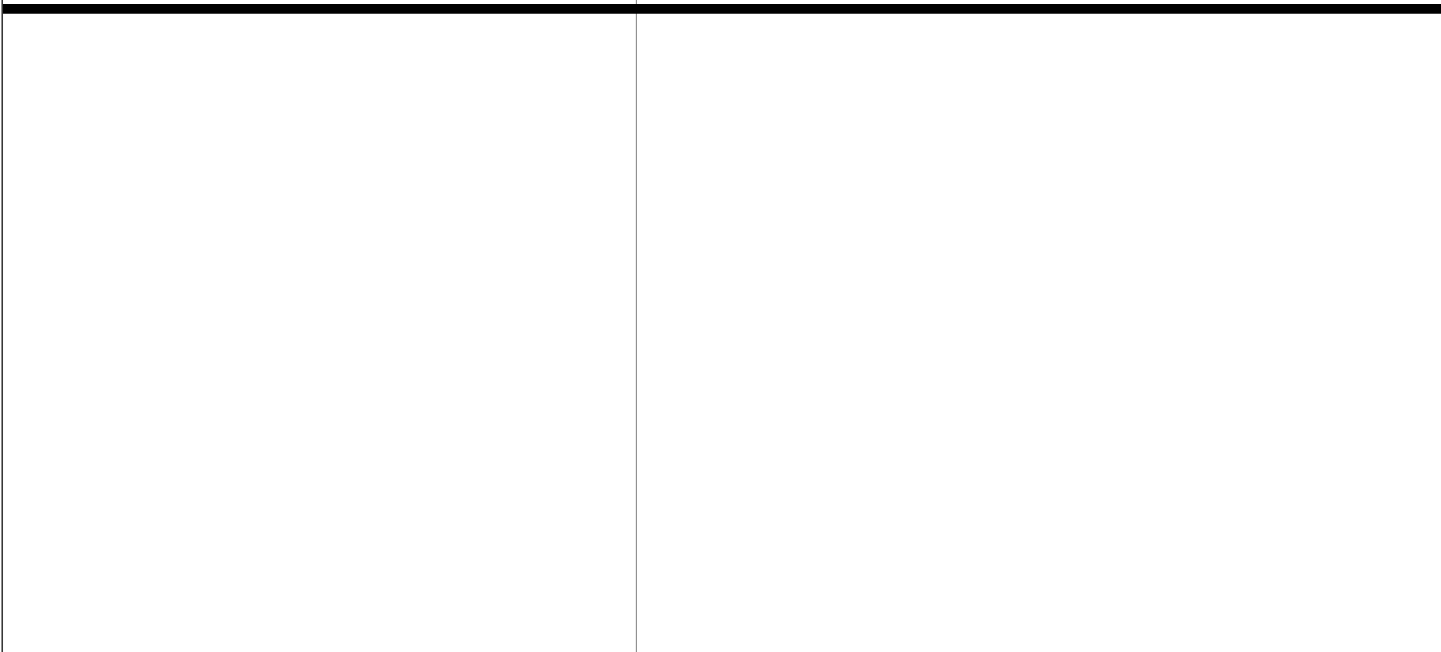
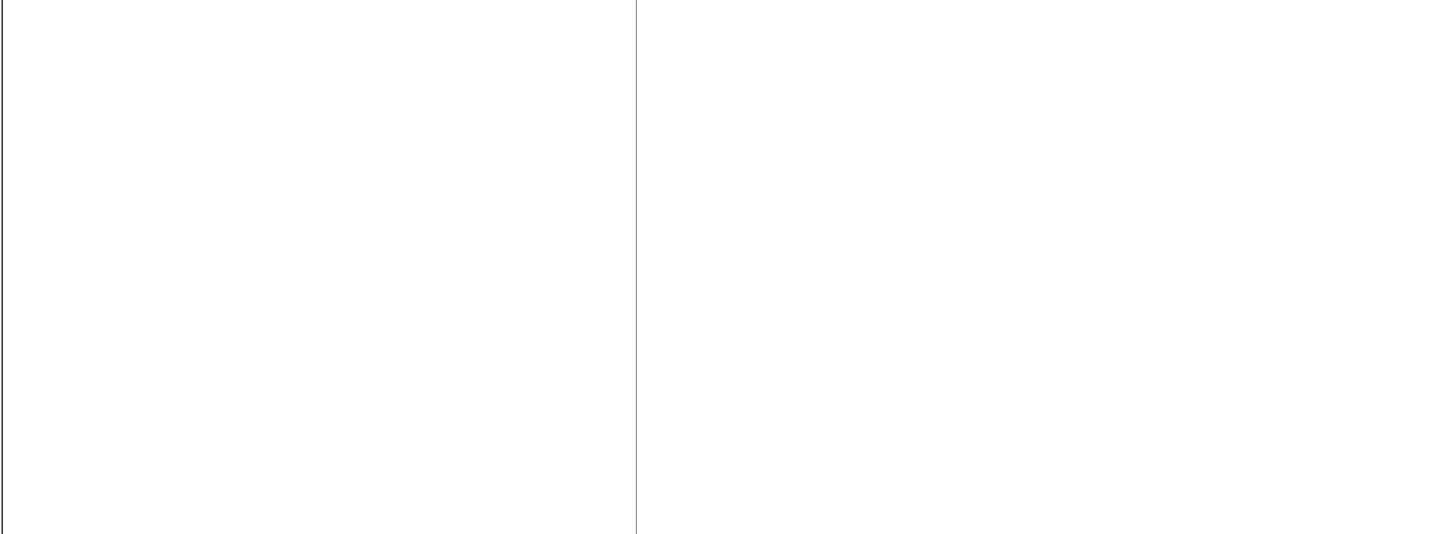


Project: Cats-i FSO Critical Path Sche
Date: Sat 8/12/17

| | | | |
|-------------------------|--|-----------------------|--|
| Task | | Inactive Milestone | |
| Critical Task | | Inactive Milestone | |
| Milestone | | Inactive Summary | |
| Summary | | Manual Task | |
| Rolled Up Task | | Duration-only | |
| Rolled Up Critical Task | | Manual Summary Rollup | |
| Rolled Up Milestone | | Manual Summary | |
| Rolled Up Progress | | Start-only | |
| Split | | Finish-only | |
| External Tasks | | External Tasks | |
| Project Summary | | External Milestone | |
| Group By Summary | | Progress | |
| Inactive Task | | Deadline | |

2nd Quarter

2/10 | 2/17 | 2/24 | 3/3 | 3/10 | 3/17 | 3/24 | 3/31 | 4/7 | 4/14 | 4/21 | 4/28 | 5/5 | 5/12 | 5/19 | 5/26

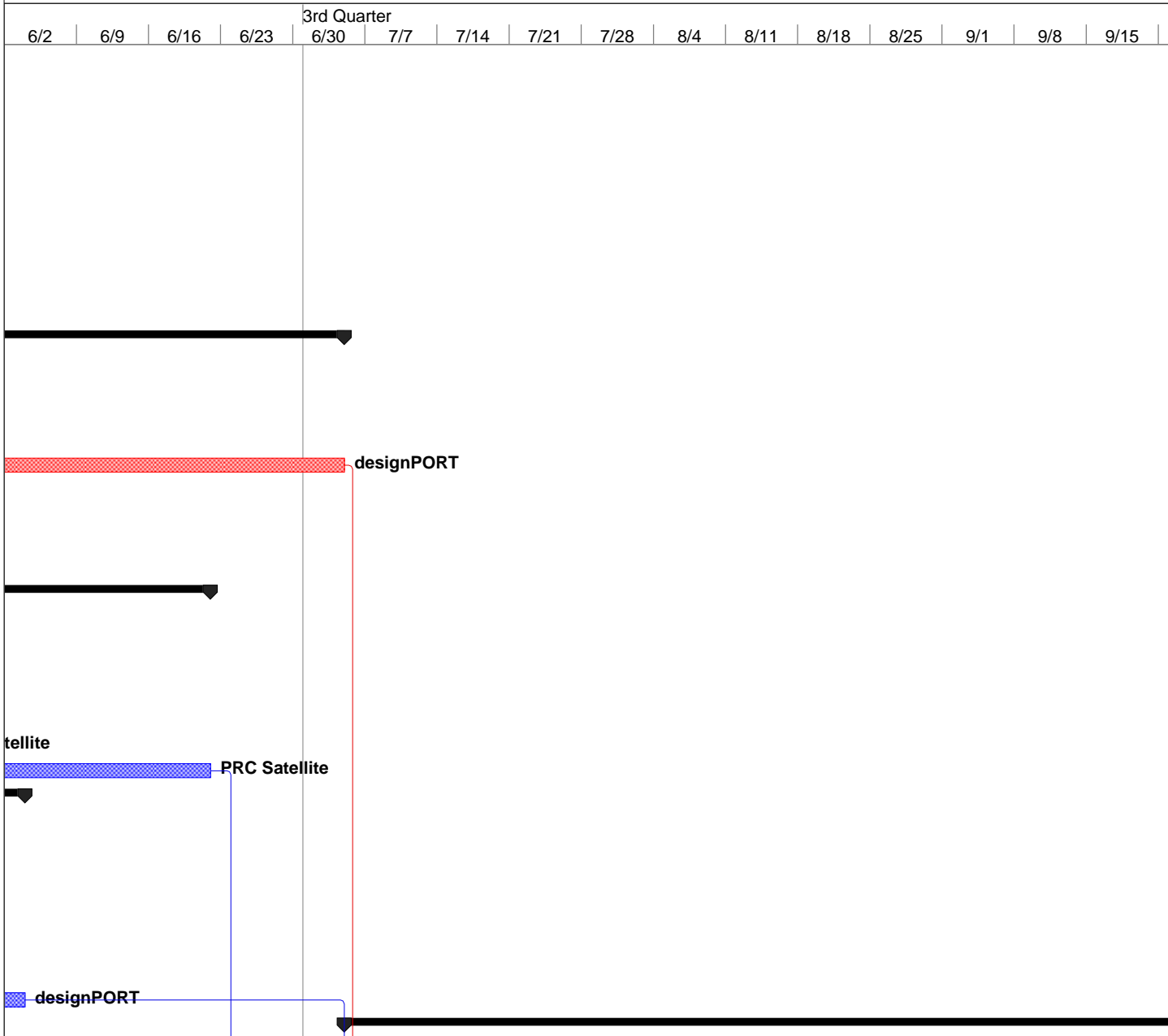


Project: Cats-i FSO Critical Path Sche
Date: Sat 8/12/17

| | | | |
|-------------------------|--|-----------------------|--|
| Task | | Inactive Milestone | |
| Critical Task | | Inactive Milestone | |
| Milestone | | Inactive Summary | |
| Summary | | Manual Task | |
| Rolled Up Task | | Duration-only | |
| Rolled Up Critical Task | | Manual Summary Rollup | |
| Rolled Up Milestone | | Manual Summary | |
| Rolled Up Progress | | Start-only | |
| Split | | Finish-only | |
| External Tasks | | External Tasks | |
| Project Summary | | External Milestone | |
| Group By Summary | | Progress | |
| Inactive Task | | Deadline | |

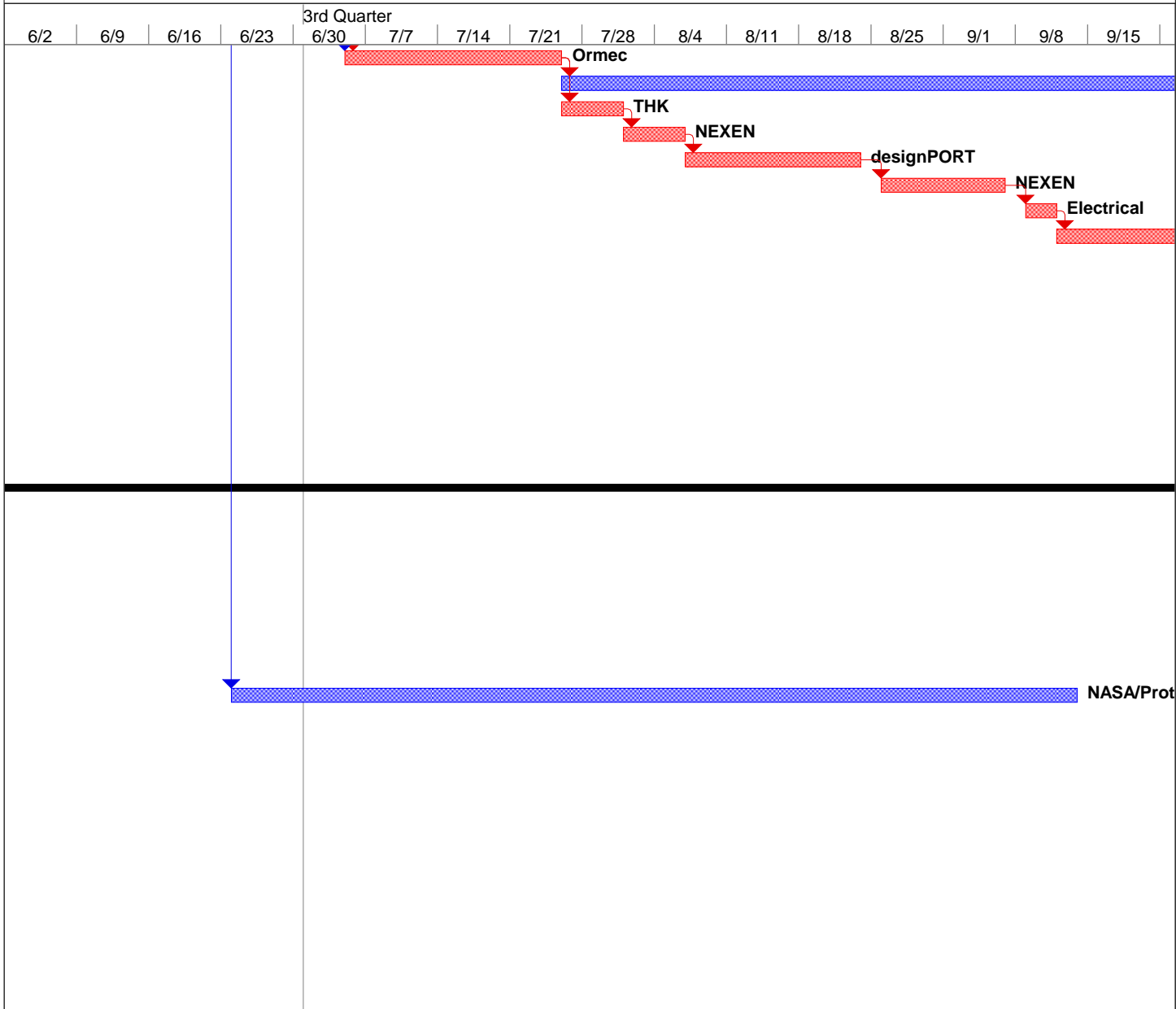


| | | | | |
|---|-------------------------|--|-----------------------|--|
| Project: Cats-i FSO Critical Path Sche Date: Sat 8/12/17 | Task | | Inactive Milestone | |
| | Critical Task | | Inactive Milestone | |
| | Milestone | | Inactive Summary | |
| | Summary | | Manual Task | |
| | Rolled Up Task | | Duration-only | |
| | Rolled Up Critical Task | | Manual Summary Rollup | |
| | Rolled Up Milestone | | Manual Summary | |
| | Rolled Up Progress | | Start-only | |
| | Split | | Finish-only | |
| | External Tasks | | External Tasks | |
| | Project Summary | | External Milestone | |
| | Group By Summary | | Progress | |
| | Inactive Task | | Deadline | |

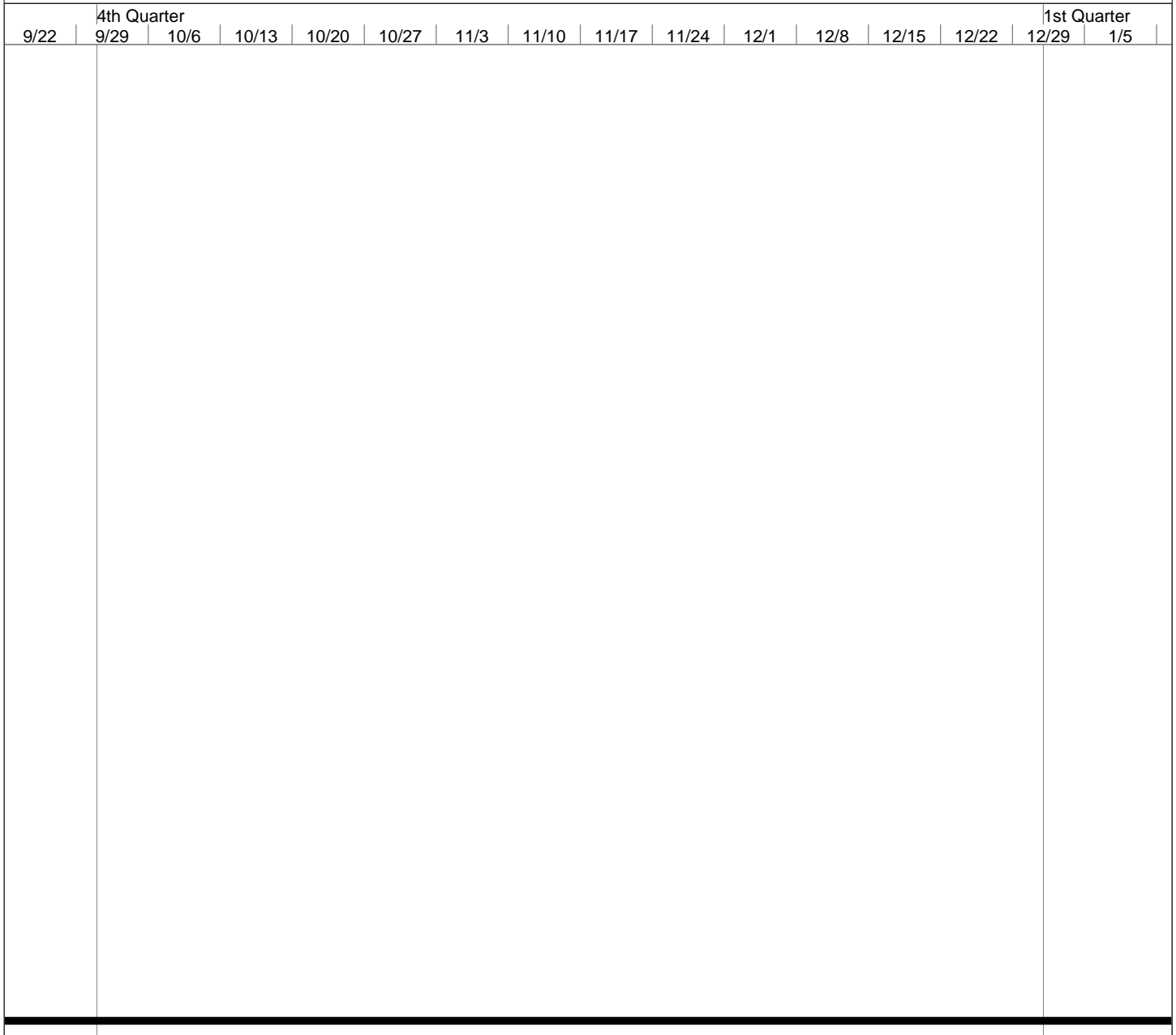


Project: Cats-i FSO Critical Path Sche
Date: Sat 8/12/17

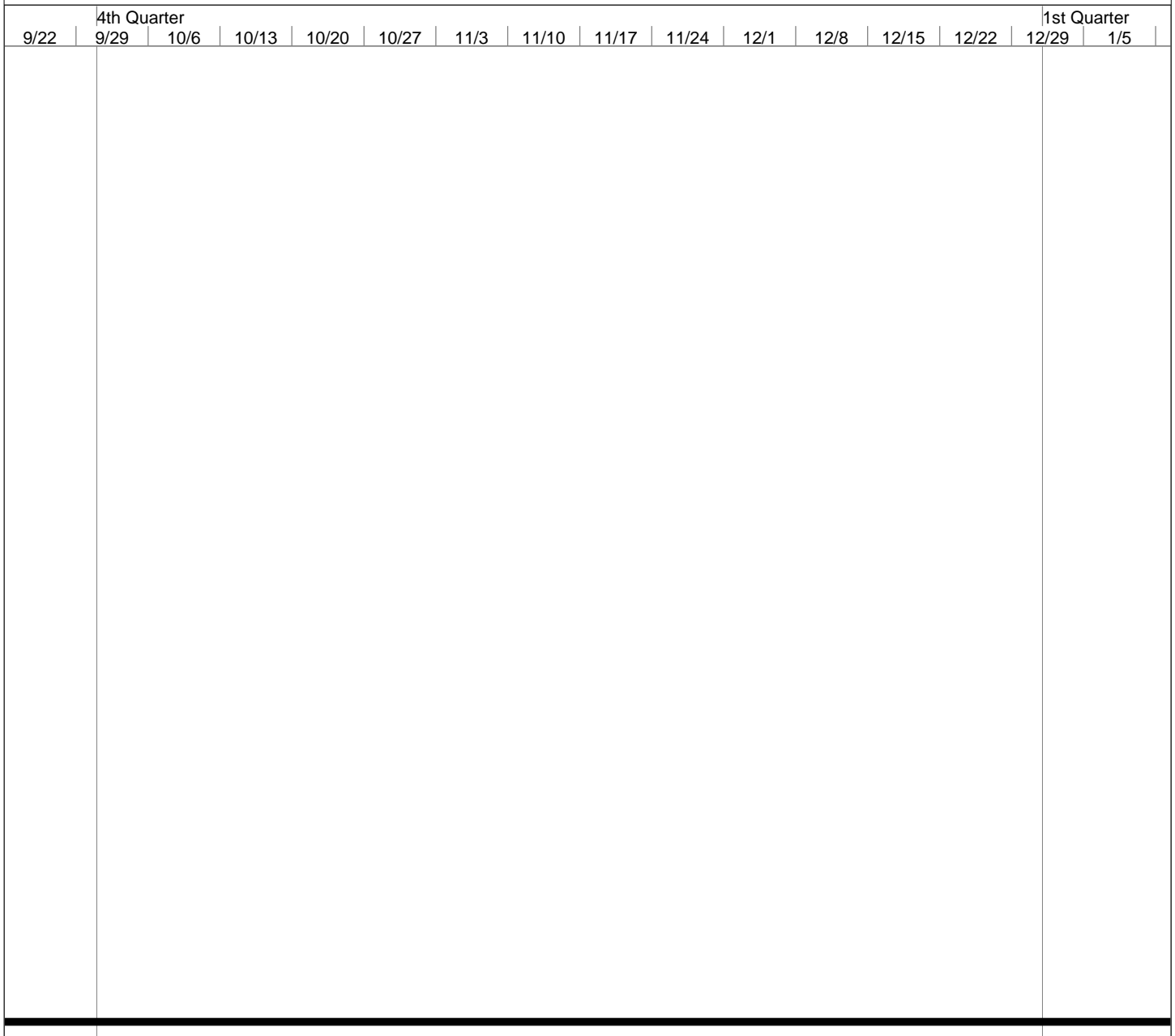
| | | | |
|-------------------------|--|-----------------------|--|
| Task | | Inactive Milestone | |
| Critical Task | | Inactive Milestone | |
| Milestone | | Inactive Summary | |
| Summary | | Manual Task | |
| Rolled Up Task | | Duration-only | |
| Rolled Up Critical Task | | Manual Summary Rollup | |
| Rolled Up Milestone | | Manual Summary | |
| Rolled Up Progress | | Start-only | |
| Split | | Finish-only | |
| External Tasks | | External Tasks | |
| Project Summary | | External Milestone | |
| Group By Summary | | Progress | |
| Inactive Task | | Deadline | |



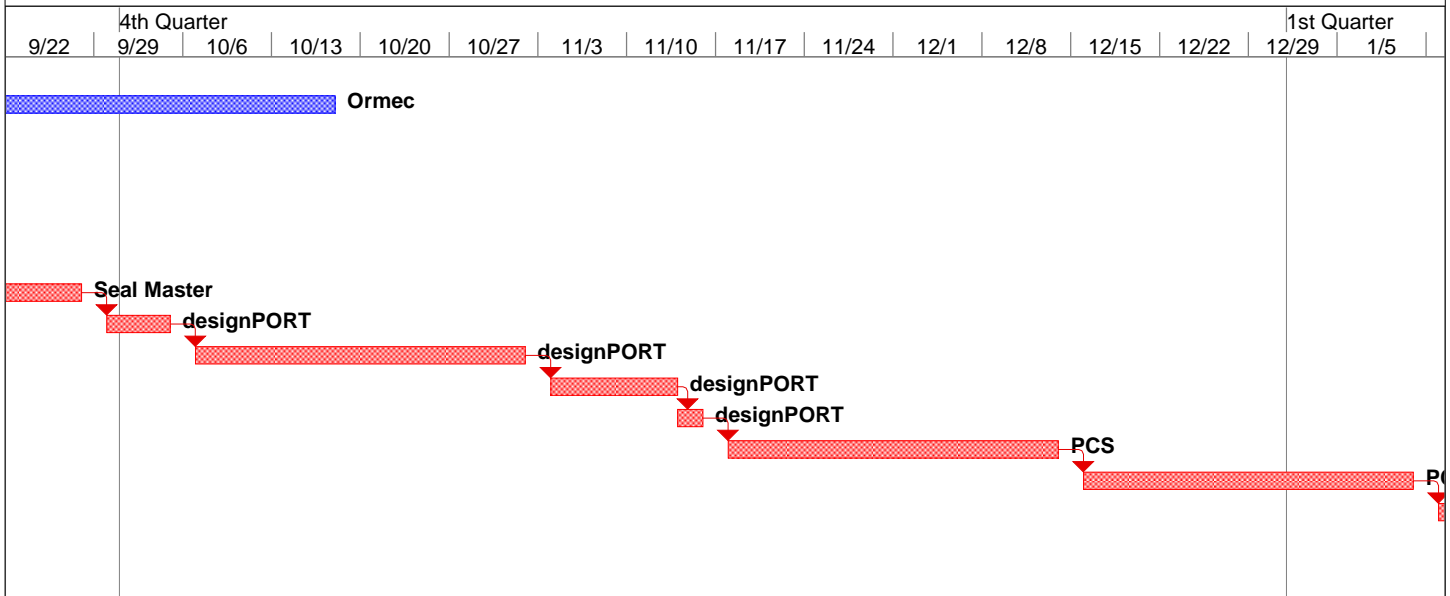
| | | | | |
|---|-------------------------|--|-----------------------|--|
| Project: Cats-i FSO Critical Path Sche Date: Sat 8/12/17 | Task | | Inactive Milestone | |
| | Critical Task | | Inactive Milestone | |
| | Milestone | | Inactive Summary | |
| | Summary | | Manual Task | |
| | Rolled Up Task | | Duration-only | |
| | Rolled Up Critical Task | | Manual Summary Rollup | |
| | Rolled Up Milestone | | Manual Summary | |
| | Rolled Up Progress | | Start-only | |
| | Split | | Finish-only | |
| | External Tasks | | External Tasks | |
| | Project Summary | | External Milestone | |
| | Group By Summary | | Progress | |
| | Inactive Task | | Deadline | |



| | | | | |
|---|-------------------------|--|-----------------------|--|
| Project: Cats-i FSO Critical Path Sche Date: Sat 8/12/17 | Task | | Inactive Milestone | |
| | Critical Task | | Inactive Milestone | |
| | Milestone | | Inactive Summary | |
| | Summary | | Manual Task | |
| | Rolled Up Task | | Duration-only | |
| | Rolled Up Critical Task | | Manual Summary Rollup | |
| | Rolled Up Milestone | | Manual Summary | |
| | Rolled Up Progress | | Start-only | |
| | Split | | Finish-only | |
| | External Tasks | | External Tasks | |
| | Project Summary | | External Milestone | |
| | Group By Summary | | Progress | |
| | Inactive Task | | Deadline | |



| | | | | |
|---|-------------------------|--|-----------------------|--|
| Project: Cats-i FSO Critical Path Sche Date: Sat 8/12/17 | Task | | Inactive Milestone | |
| | Critical Task | | Inactive Milestone | |
| | Milestone | | Inactive Summary | |
| | Summary | | Manual Task | |
| | Rolled Up Task | | Duration-only | |
| | Rolled Up Critical Task | | Manual Summary Rollup | |
| | Rolled Up Milestone | | Manual Summary | |
| | Rolled Up Progress | | Start-only | |
| | Split | | Finish-only | |
| | External Tasks | | External Tasks | |
| | Project Summary | | External Milestone | |
| | Group By Summary | | Progress | |
| | Inactive Task | | Deadline | |



| | | | | |
|---|-------------------------|--|-----------------------|--|
| Project: Cats-i FSO Critical Path Sche Date: Sat 8/12/17 | Task | | Inactive Milestone | |
| | Critical Task | | Inactive Milestone | |
| | Milestone | | Inactive Summary | |
| | Summary | | Manual Task | |
| | Rolled Up Task | | Duration-only | |
| | Rolled Up Critical Task | | Manual Summary Rollup | |
| | Rolled Up Milestone | | Manual Summary | |
| | Rolled Up Progress | | Start-only | |
| | Split | | Finish-only | |
| | External Tasks | | External Tasks | |
| | Project Summary | | External Milestone | |
| | Group By Summary | | Progress | |
| | Inactive Task | | Deadline | |



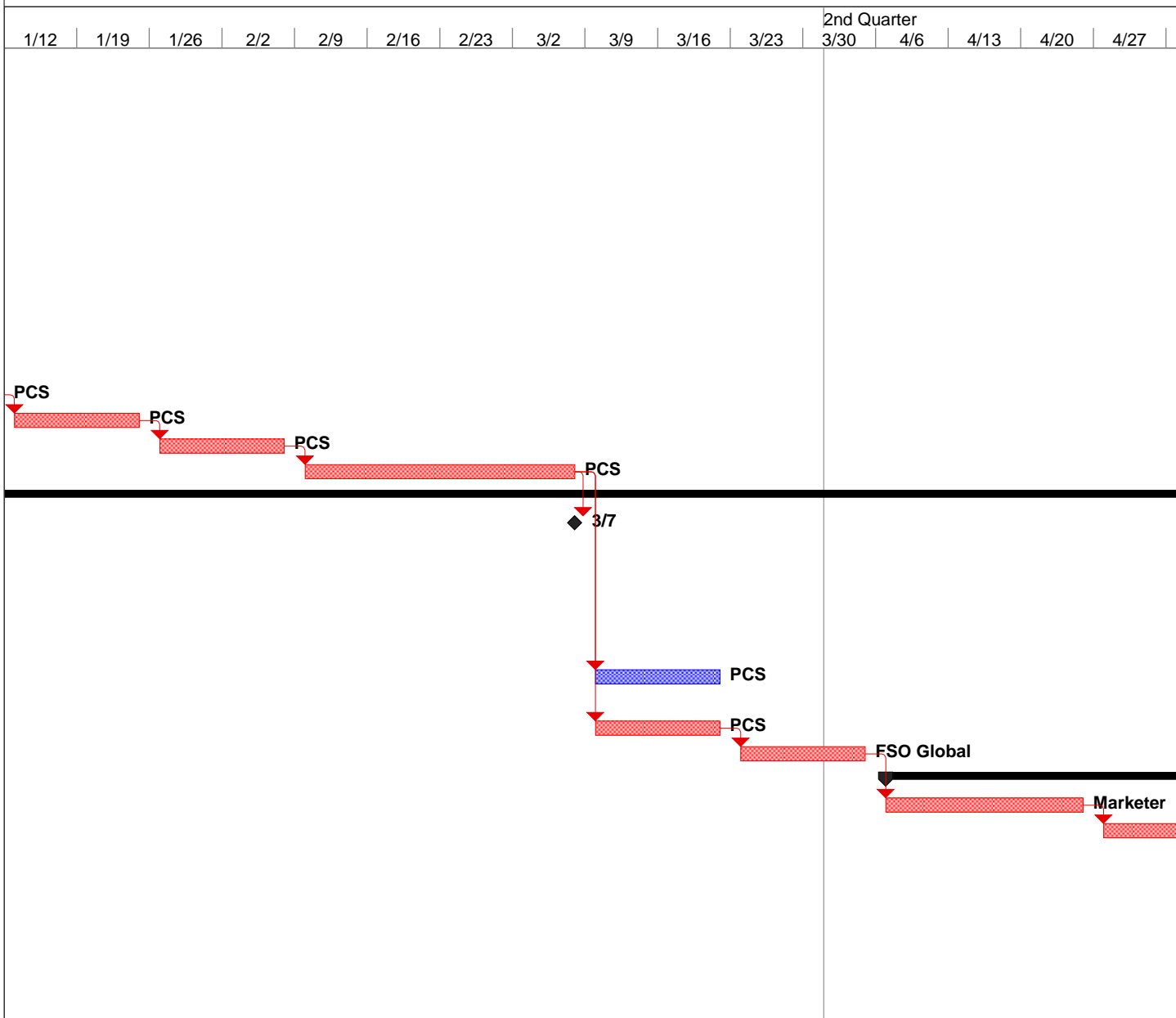
Project: Cats-i FSO Critical Path Sche
Date: Sat 8/12/17

| | | | |
|-------------------------|--|-----------------------|--|
| Task | | Inactive Milestone | |
| Critical Task | | Inactive Milestone | |
| Milestone | | Inactive Summary | |
| Summary | | Manual Task | |
| Rolled Up Task | | Duration-only | |
| Rolled Up Critical Task | | Manual Summary Rollup | |
| Rolled Up Milestone | | Manual Summary | |
| Rolled Up Progress | | Start-only | |
| Split | | Finish-only | |
| External Tasks | | External Tasks | |
| Project Summary | | External Milestone | |
| Group By Summary | | Progress | |
| Inactive Task | | Deadline | |



Project: Cats-i FSO Critical Path Sche
Date: Sat 8/12/17

| | | | |
|-------------------------|--|-----------------------|--|
| Task | | Inactive Milestone | |
| Critical Task | | Inactive Milestone | |
| Milestone | | Inactive Summary | |
| Summary | | Manual Task | |
| Rolled Up Task | | Duration-only | |
| Rolled Up Critical Task | | Manual Summary Rollup | |
| Rolled Up Milestone | | Manual Summary | |
| Rolled Up Progress | | Start-only | |
| Split | | Finish-only | |
| External Tasks | | External Tasks | |
| Project Summary | | External Milestone | |
| Group By Summary | | Progress | |
| Inactive Task | | Deadline | |



Project: Cats-i FSO Critical Path Sche
Date: Sat 8/12/17

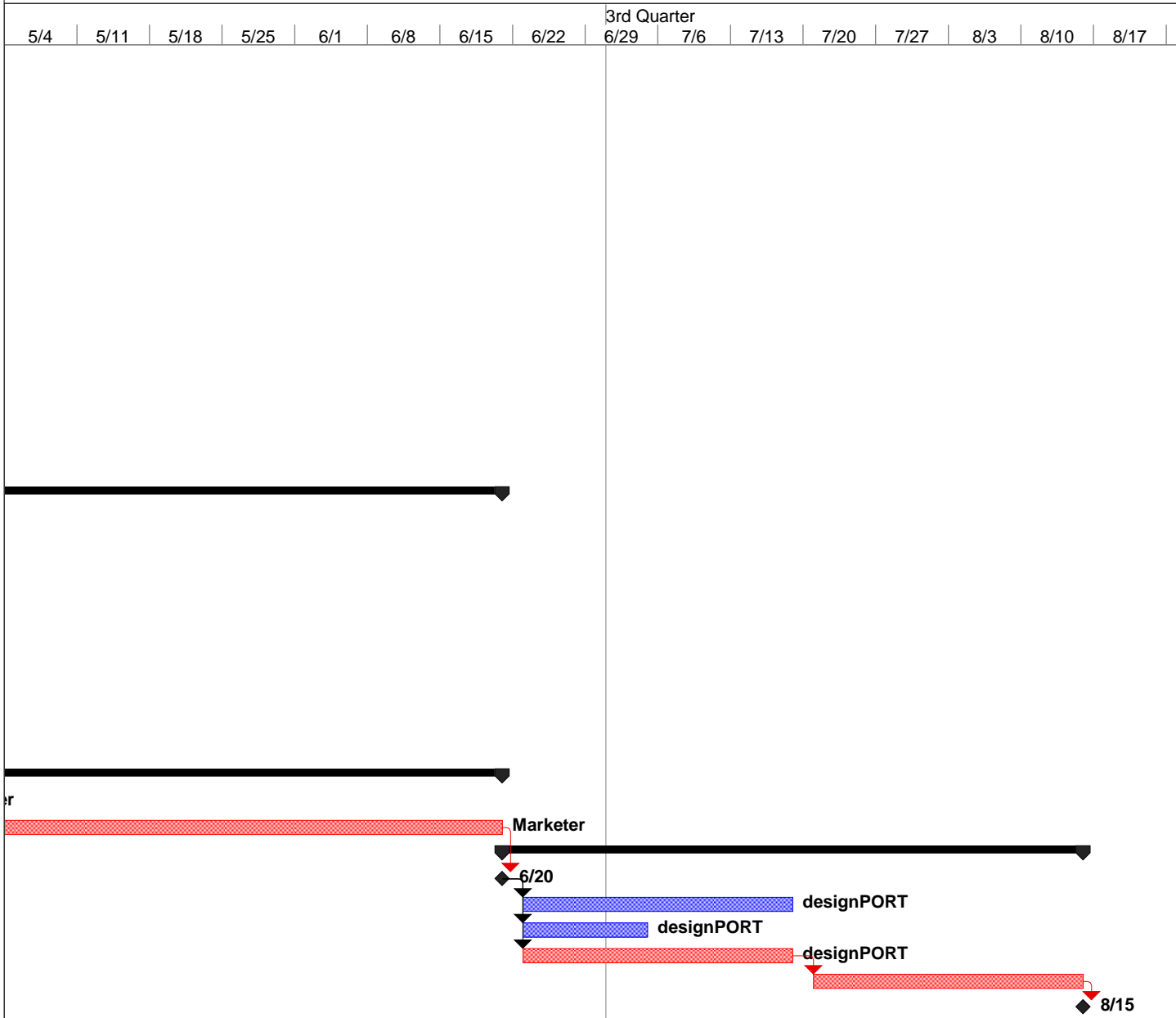
| | | | |
|-------------------------|--|-----------------------|--|
| Task | | Inactive Milestone | |
| Critical Task | | Inactive Milestone | |
| Milestone | | Inactive Summary | |
| Summary | | Manual Task | |
| Rolled Up Task | | Duration-only | |
| Rolled Up Critical Task | | Manual Summary Rollup | |
| Rolled Up Milestone | | Manual Summary | |
| Rolled Up Progress | | Start-only | |
| Split | | Finish-only | |
| External Tasks | | External Tasks | |
| Project Summary | | External Milestone | |
| Group By Summary | | Progress | |
| Inactive Task | | Deadline | |



| | | | | |
|---|-------------------------|--|-----------------------|--|
| Project: Cats-i FSO Critical Path Sche Date: Sat 8/12/17 | Task | | Inactive Milestone | |
| | Critical Task | | Inactive Milestone | |
| | Milestone | | Inactive Summary | |
| | Summary | | Manual Task | |
| | Rolled Up Task | | Duration-only | |
| | Rolled Up Critical Task | | Manual Summary Rollup | |
| | Rolled Up Milestone | | Manual Summary | |
| | Rolled Up Progress | | Start-only | |
| | Split | | Finish-only | |
| | External Tasks | | External Tasks | |
| | Project Summary | | External Milestone | |
| | Group By Summary | | Progress | |
| | Inactive Task | | Deadline | |



| | | | | |
|---|-------------------------|--|-----------------------|--|
| Project: Cats-i FSO Critical Path Sche Date: Sat 8/12/17 | Task | | Inactive Milestone | |
| | Critical Task | | Inactive Milestone | |
| | Milestone | | Inactive Summary | |
| | Summary | | Manual Task | |
| | Rolled Up Task | | Duration-only | |
| | Rolled Up Critical Task | | Manual Summary Rollup | |
| | Rolled Up Milestone | | Manual Summary | |
| | Rolled Up Progress | | Start-only | |
| | Split | | Finish-only | |
| | External Tasks | | External Tasks | |
| | Project Summary | | External Milestone | |
| | Group By Summary | | Progress | |
| | Inactive Task | | Deadline | |



Project: Cats-i FSO Critical Path Sche
Date: Sat 8/12/17

| | | | |
|-------------------------|--|-----------------------|--|
| Task | | Inactive Milestone | |
| Critical Task | | Inactive Milestone | |
| Milestone | | Inactive Summary | |
| Summary | | Manual Task | |
| Rolled Up Task | | Duration-only | |
| Rolled Up Critical Task | | Manual Summary Rollup | |
| Rolled Up Milestone | | Manual Summary | |
| Rolled Up Progress | | Start-only | |
| Split | | Finish-only | |
| External Tasks | | External Tasks | |
| Project Summary | | External Milestone | |
| Group By Summary | | Progress | |
| Inactive Task | | Deadline | |