

A Still Life with Iris
By Steven Dietz


Costumes

By: Lily Higginbotham





Table of Contents

- 
1. Overview
 2. World of the Play
 3. Color Theory
 4. Chosen Character
 5. Associated Colors
 6. Collage Breakdowns
 7. Rendering

Overview

A Still Life with Iris is a story about a young girl named Iris who lives in the magical land of Nocturno, where memories are stored in objects worn in one's coat. The story chronicles her quest to regain her memory and her home



Breaking Down the World of the Play

Setting

- The land Nocturno, where everything made during the day is created at night. The people wear coats that hold their memories, and when a memory is lost, the corresponding item is removed from their coat.

Themes

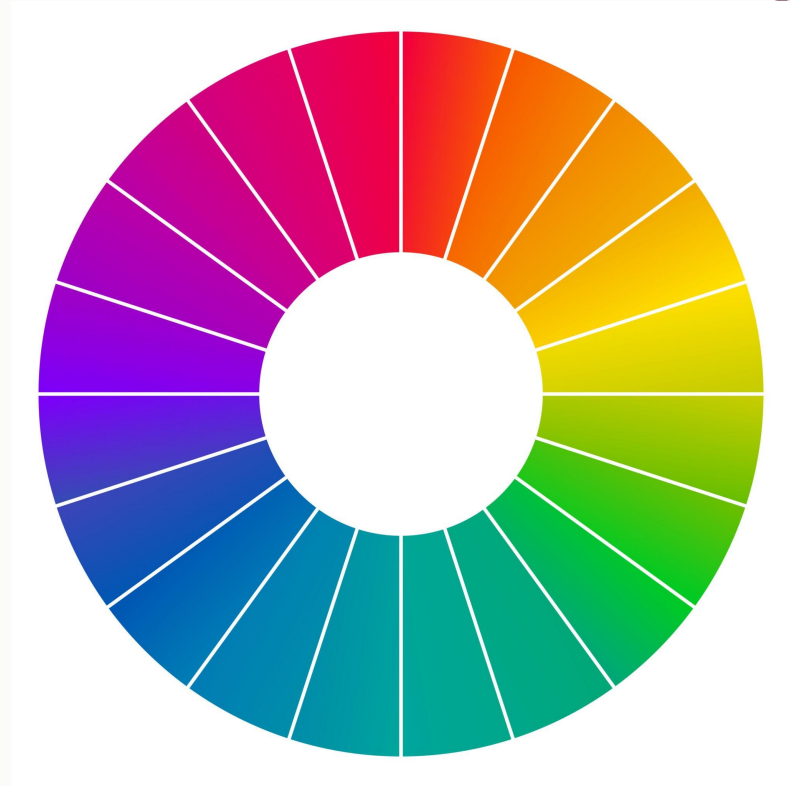
- Exploring the significance of one's past and its impact on identity and future
- Family, home, and the importance of holding onto one's memories.
- Coming of age

Main Characters

- Iris, Miss Overlook (mom), Mr. Matternot (dad), Annabel Lee, Mozart, Memory Mender, The Goods (Grotto and Gretta), Elmer and Hazel

Color Theory!

- This is a study of how colors interact with each other and how they affect human perception and emotions
- Exploring color theory was especially important for this play due to its strong fantasy and childlike elements. I focused on using lighter, more playful colors typically associated with childhood, then gradually shifted them to darker tones by the end to reflect the story's coming-of-age journey



Annabel Lee

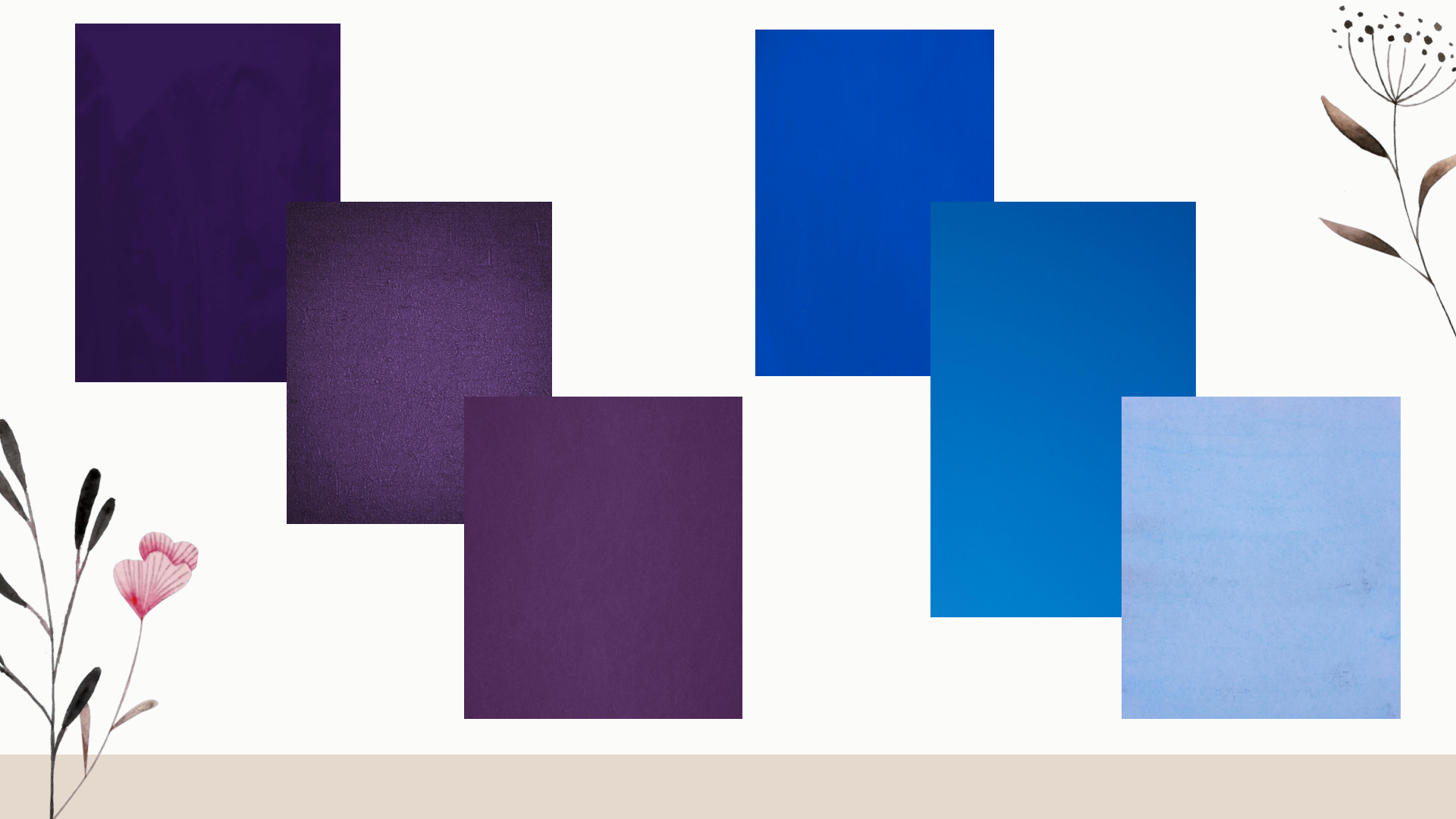
- Described as bright, witty, independent, and imaginative
- Quick to challenge others' assumptions and deeply loyal
- Her friendship with Iris becomes the guiding force in Iris's journey to reclaim her memory and herself
- Through her courage and belief in holding on to one's true experiences, Annabel helps Iris resist the control and conformity enforced by the Greater Goods



Associated Colors

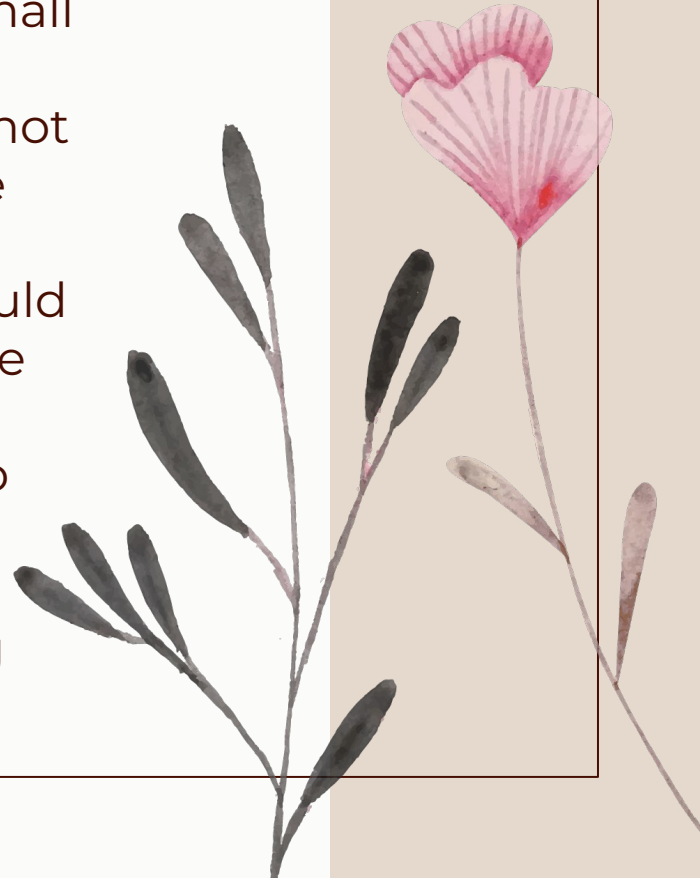
- Originally the color red was associated because of her fierce attitude, stood up for her friends, and from reading was very passionate in returning home while also helping others return home also
- Further reading led me to the color blue and purple which signify responsibility, trust, and calmness.
- Trust and responsibility match her with how she is a captain of her ship, she's trustworthy in the escape from the Goods.
- There is also a calmness with how she is steady when it comes to the situations they face during their escape





Hairstyles Chosen

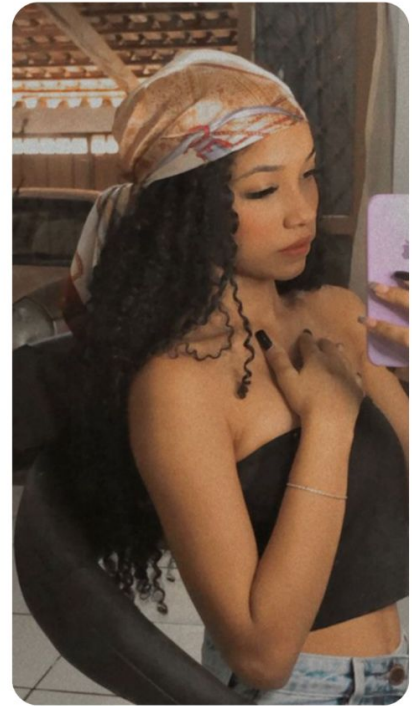
- Wavy, tight curled, long hair, with a mix of small tight braids and a few larger braids
- Researched for “pirate” type hairstyles, easy, not distracting, but also gives off the appearance that she’s been at sea working on her ship
- Lent more towards the idea that her hair would be out of her face, which a bandana would be useful for
- I went with a bandana over a captain’s hat so that it wouldn’t cast a shadow on the actor’s face
- We also first meet her when she has nothing from her ship





Hilary Michelle Carrasquer...

❤️ 345



Trendy hairstyles Simple...



Euphoria

First Meet

- When first introduced it reads as if she is this ethereal, ghost-like figure
- As the story continues we gather more information that she didn't have much of anything with her, which we later find that it's all with her ship
- The following slide has a few options for **white dresses**, some are more torn to signify that separation from her ship and from her world
- In the script it also says she has a **telescope** so I included a **holder** that could be attached either as a belt or a crossbody
- It says that she's wearing these blue and greens which I chose **light blue skirt** to showcase visually her walking out of the water
- Her age seems similar to Iris so I wanted to showcase her "coming of age" by transitioning her into a deeper color later on





"14\" Nautical Handheld...
Etsy



Denim Blue Handkerchief...
thelittlebazaar.com



Scarlet Darkness Long
Skirts for Women Double-...



I'd wear this as a pirate



Womens Renaissance Fair...



Amazon



Gabrielamag



Sweetie

When she finds the ship:

- This is when she gets separated from Mozart and Iris and gets thrown into the Tunnel of Unwanted
- She finds her ship and this is where she would change into a different look to signify her being reunited with what she lost
- **The Coat:** typical captain's coat that resembles her own version of a past-coat
- This is symbolic to how there are tons of other past-coats that the Goods have taken and thrown into the tunnel, they would have thought taking it would have the same effect
- The **skirt color change** is a nod to Iris's help, but also her stepping into the role that she now has to steer the ship with everyone on it to safety and freedom



Continued

- The **vest or corset** like garments are there to kind of help the transition or structure of the overall outfit
- **The Wheel**: she runs in with the wheel of her ship and throws it to Captain Also to show everyone that there is a way out and there is freedom
- The **telescope**: signifies that she's found what all she was missing when we first meet her. This is also used later when they try and free Iris's parents

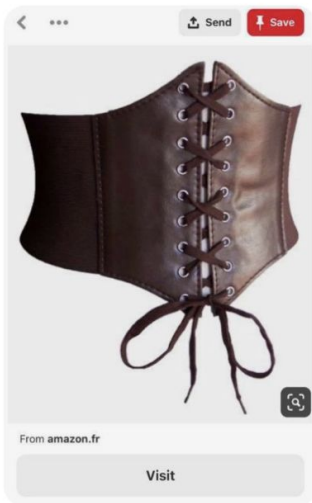




Women Pirate Renaissanc... ☆



Poshmark



From amazon.fr

Visit



shajw



Vintage styled telescope... ☆
Etsy



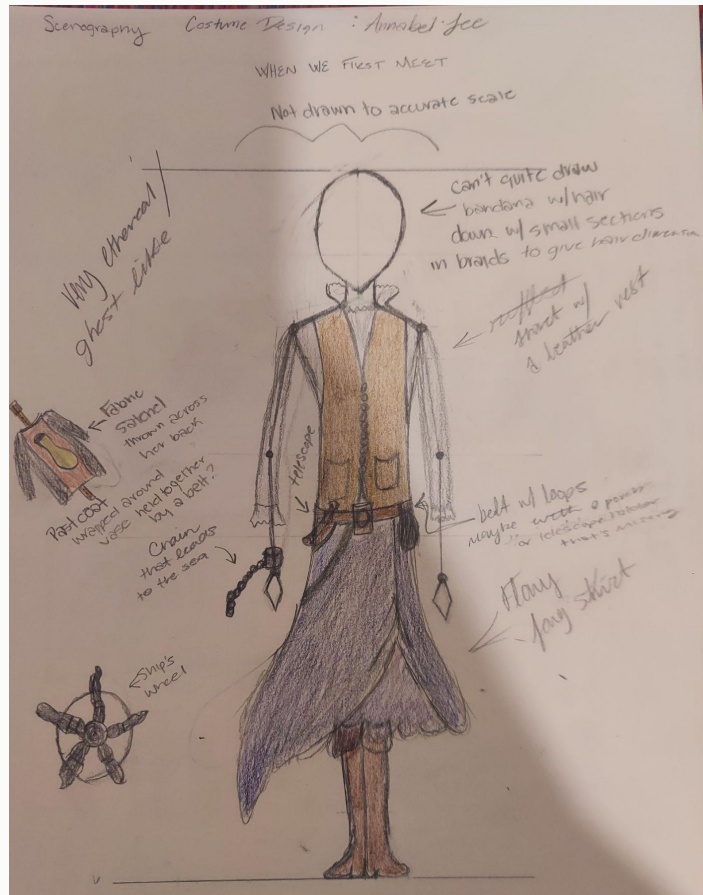
WILLOW ROW Wood... ☆



Alexander Mcqueen
Destroyed Cotton Denim... ☆



Belle Poque Women's
Steampunk Gothic Wrap... ☆





Thanks!

CREDITS: This presentation template was created by Slidesgo, including icons by Flaticon, and infographics & images by Freepik.

Please keep this slide for attribution.

