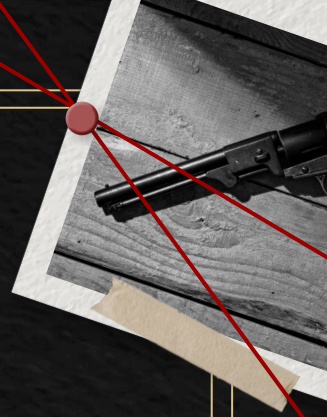


The Mousetrap by Agatha Christie

Costumes

By Lily Higginbotham



un abric pour
zaf faven buen
- go lerne
ilu su aerpem
en me fany un
un lue pora zaf

Overview

A classic murder mystery play where seven strangers, snowed in at a remote country guesthouse called Monkswell Manor, discover that a murderer is among them. Following the murder of a woman in London and the subsequent arrival of a police sergeant on skis, the group's sordid pasts are revealed, and tensions escalate when a second murder occurs within the guesthouse.



Themes and Setting

1 Theme

Main theme is deception, revenge, and the haunting of one's past

2 Setting

Monkswell Manor run by Mollie and Giles Ralston, during a snowstorm,

3 Time

English Countryside in the "present day" 1950s

Popular worn items in the 1950s

For Women:

- Dresses featuring full, cinched-waist skirts (pencil-skirts became popular later on in the decade)
- Accessories: Hats were found everywhere, it didn't matter the size. Gloves were also essential especially when leaving the house
- Fabrics: Cotton, silk, and wool were used for everyday wear while satin and silk were reserved for evening wear

For Men:

- Tailored suits and ties created a formal look specifically for work and social occasions
- Shoes: Chunky low-heeled shoe or boot more commonly known as a brogue or oxford shoe were most common
- For more casual it would be grey flannel trousers or blazers
- Accessories most commonly used were silk ties, cufflinks, pocket squares, and suspenders

me fun abner
que esfero fawn
m e go
esferila su
abner me

Characters



me fun abner
que esfero fawn
m e go
esferila su
abner me

Our Hosts

Mollie Ralston

- Young, well-mannered
- Owner of Monkswell Manor
- Anxious to make the guest house a success
- Around 20-30 years old
- Seen in a plain dark red sweater with a neutral undershirt, simple belt, grey or dark skirt, tights, and black shoes

Giles Ralston

- Mollie's husband
- Helps her run the guest house
- Often found arrogant, protective, and jealous when it comes to Mollie and the attention she receives from the guests
- Around 20-30 years old
- Seen in neutrals or matchmaking/complimentary colors with Mollie, button up shirt, tie, sweater, darker slacks or khakis, loafers or boots



I like the structure of the coat, the scarf, the gloves. I don't like the color or pattern.



*



This is my favorite outfit combo. I love the colors, the hair, etc. I think this color fits the character really well!



I also liked these as second options. Mollie is a young married woman so I would love to see a more flirty, fun girl w/ a more sophisticated or structured top.



I also really liked this combination of maybe a more neutral base with a colored overcoat.



These along w/ the other highlighted shoes are what I pictured her wearing. It is supposed to be during a blizzard so the shoes it might be a boot or something more covered.



These are typically the style of winter coats worn in the 1920s. Every character has some type of coat worn. Mollie starts me as a very simple, functional sign of character that also plays up to color on an outfit element.

Mollie Ralston



safe flower green like safe flower

Giles



green woolen Overcoat Vintage Lo...
y



1950s Men's Fashion History for
Business Attire



1950s Men's Fashion



Giles Ralston

safe from even the most

in me for you advice me

Our Guests

Christopher Wren

- 20-30 years old, first guest to arrive, described as a childish, artsy, young man
- Seen as the opposite of Giles: poppy colors, colorful ascot or tie, with a neutral overcoat

Mrs. Boyle

- 40-60 years old, constantly complaining and critical of everything
- Seen in royalish purple colors, with glasses, a two piece shirt and skirt, big statement belt, a hat in the beginning, black kitten heel

Major Metcalf

- 40-60 years old, retired military who is stoic but polite
- Seen in a leather jacket more than an overcoat, boots with the pants tucked in like the military wear, nice buttoned up shirt or sweater with a tie
- Everything would be in neutral colors, no wrinkles

Christopher

3 Pins



tg 60s 70s Botany 500 Trench Coat P...
Bay

I liked
the pattern
of this tie



1930-1949 - La compagnie du costume

Liked
the colors
since it
stands
out
→ also
loved this
scarf

I liked both
of these coats
more so the gray
though



What Men Wore in the 1950s

I loved this
outfit, if
buttoned up
where the
he could stand
out

Organize

Add

More ideas

safe from even the safe from

in me for if we believe in

soft flower from the - soft from

← Mrs Boyle



the glasses are merely to signify that she's an older character

Zenni Women's Retro Round Prescripti...
Zenni Optical ☆



Fashion Vintage: Winter Wear...



Photographic Print: Ladies Modeling Ti...
art.com ☆



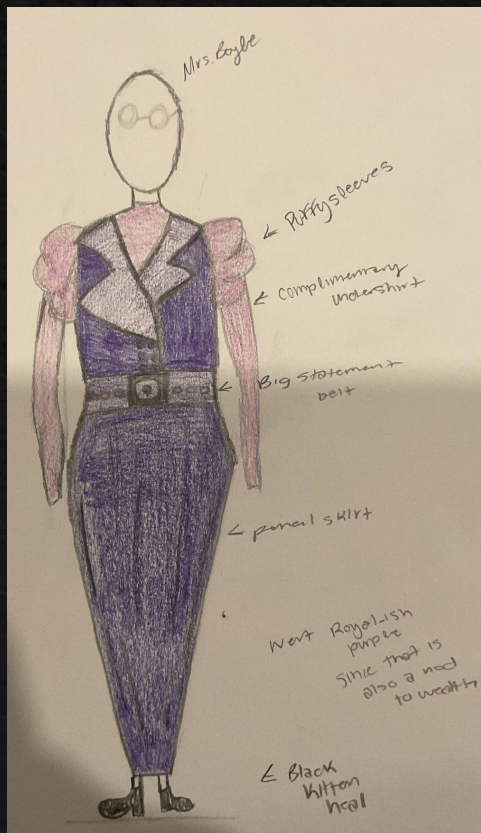
1 Pair Women's Thick Plush Fur Cuff Su...
SHEIN USA ☆



She gave me the vibe of regal, sophisticated, older, rich and that the slightest inconvenience would ruin her mood completely

Fur is typically associated with wealth, especially if it's real. I pictured her walking in w/ her coat moving that.

I also really loved these puffy sleeves, with the brooch, and the more structural, less flowy outfit. Thinking mainly pencil, straight skirts.



in my opinion, the accessories are

major metcalf



Sheer
Gabard
\$21⁹⁵
\$2.50 D.

New She

Hercules makes Zif
warm yet light "Fiber
second, without the
lined! "Fiber E" ray
all wool mackinaw cl
lined with 100% pu
warmly lined. 16-oz.
2-piece detachable b
chest 36 to 46 in. Shi
41 D 6810—Gray
41 D 6812—Chestnut

Men's 1950s Casual Clothing History



Style



safe from even the worst of the weather

in the city of the future

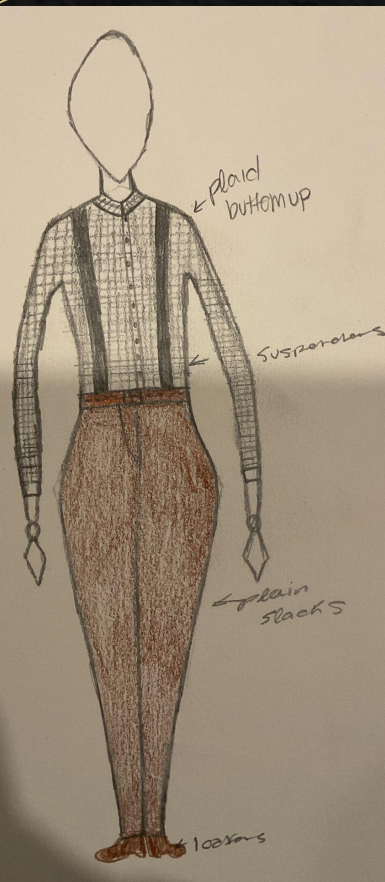
Our Guests

Miss Casewell

- 20-30 year old, young, standoffish woman with a mysterious air
- Seen with brown loafer/small heels, brown slacks, belt, plaid button up, and suspenders

Mr. Paravicini

- 30 - 50 year old, mysterious, questionable guest with a fun mustache
- Seen with a leather overcoat with a fur lining the inside, fedora with a feather or pen sticking out of it, dark slacks, tucked in dark blue shirt, with a belt



Miss Casewell

Select or reorder



I liked this for more of a modern take of the dress pants or suspenders and dress pants. If a nice top or dress shirt jacket were to be thrown over I think it would be a nice combo



This reminds me of a man's loafer or dress shoe, but still highlights a feminine feature w/ the details and heel.



I LOVE both of these coats
One has a more "feminine" feel so it could throw off what's under
The other goes more with the structured pants and dress shirt



LOVE the combo of the shoulder strap, button thing.
I think the shirt could be more casual, but I love the look of it.
If the shirt had long hair, putting it in a messy bun or ponytail would look great with this.

safe from them like safe from

in me for if we are in me

Mr paravcini

4 Pins



For lined coat as asked for in script



Winter Men's Mid Jacket Fur Collar...
eBay ☆



I like this style as hat for this character



I like both of these color combos also. I really like the bright sweater w/ everything else being neutral



I wouldn't mind playing w/ a dark blue to help make his character more mysterious and questionable

safe from them like safe from

Our Investigator

Detective Sergeant Trotter

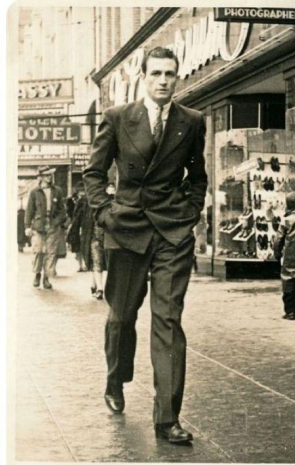
- Late 20s to early 40s, cheerful, common-place man who arrives guest house on skis to investigate a local murder
- Seen in suit, suspenders, tie, nice black shoes
- Very dark color scheme, more black and gray
- Black long overcoat with a black fedora or detective hat
- If anything would be in a different color it would be his tie in a dark red and it would match with the suspenders

Trotter

4 Pins



Man black overcoat stylish tweed ja...
Etsy UK



Double Breasted Suit, Tall Man



He's impersonating a cop
So I don't think he'd have
a uniform. Going w/ that I'd
feel like his character would
play heavily into the "detective"
part.

Suits, dark colors
Dressed important for important
business



safe from them too - safe from

in me for y un advice



Thanks!

CREDITS: This presentation template was created by **Slidesgo**, and includes icons by **Flaticon**, and infographics & images by **Freepik**

Please keep this slide for attribution