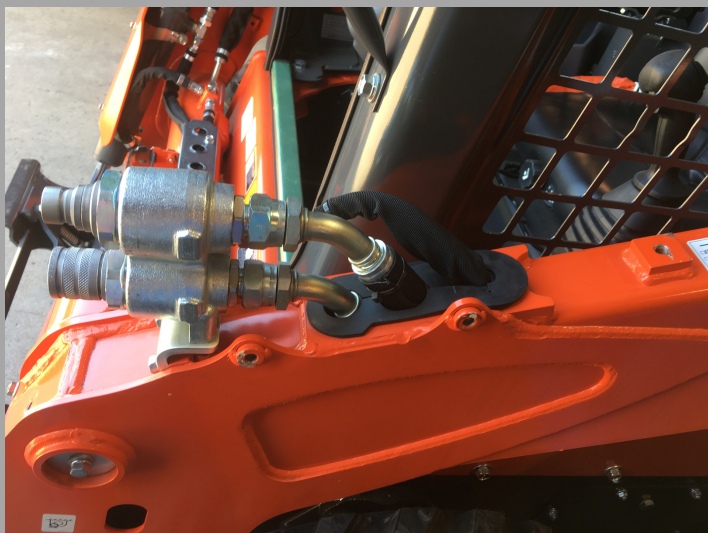


ARMORDILLO™ SSV COUPLER GUARD INSTALLATION



1. Remove factory grab bar and coupler guard (3 bolts). The factory bolts will be reused.
2. Slide new guard over couplers from the front.
3. Push down on the back of the guard and loosely install 2 of the factory bolts on side of loader arm. The ArmorDillo SSV Coupler Guard is designed to help reinforce the factory manifold. As a result, there should be some moderate tension applied.
4. Reinstall factory grab bar and tighten all 3 bolts.

Keep skid steers on the job & save repair costs!

Thank you for your purchase! See what else we offer on our website, Facebook, and YouTube.



936.894.2060 ArmorDilloGuards.com