

SPOTTER NEWSLETTER

NWS PHOENIX SKYWARN NEWSLETTER

SEPTEMBER 2022



WHAT'S INSIDE

Monsoon Update

Monsoon Tracker

Webpages of Interest

Spotter Reports

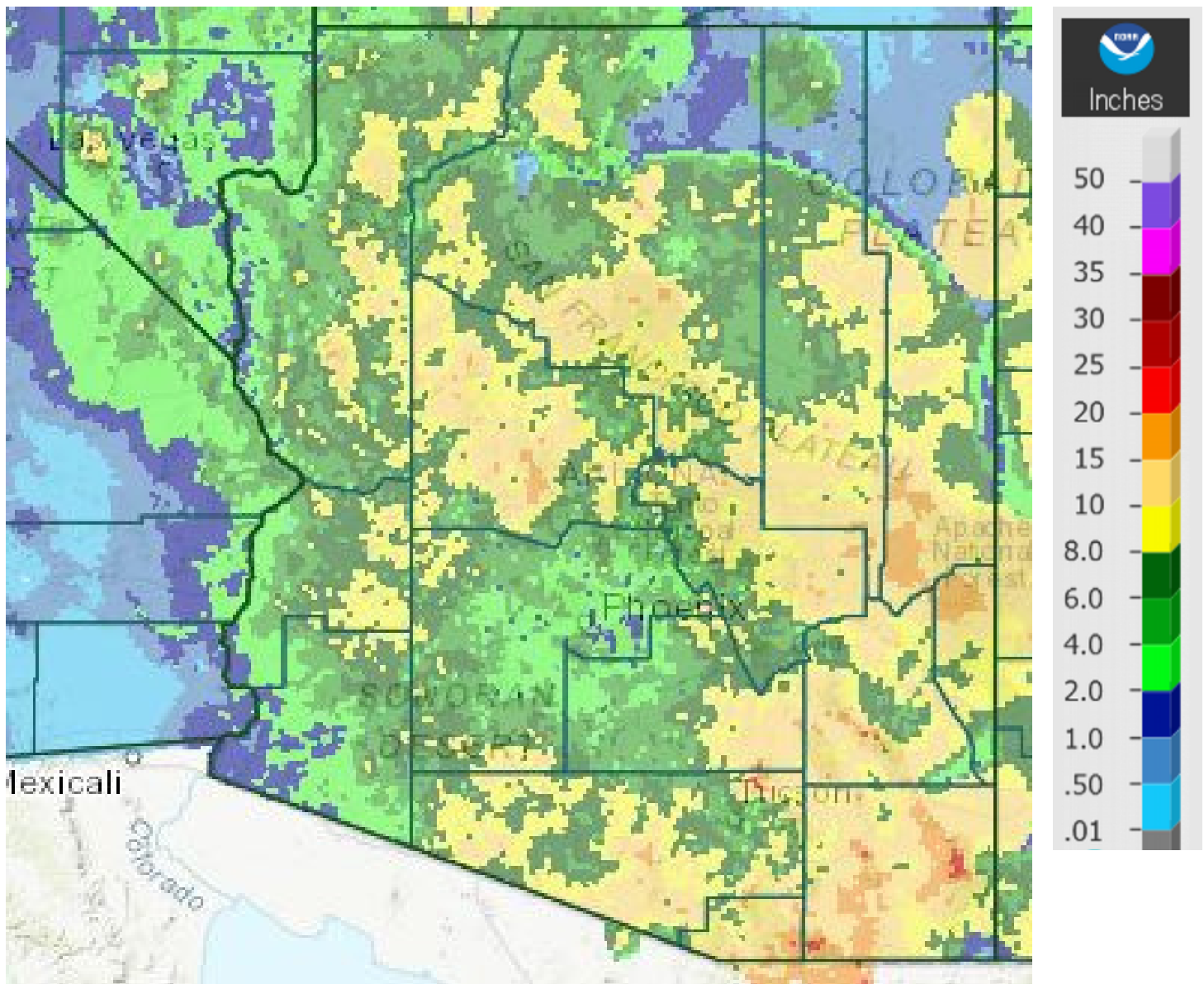
Update your contact
information

Monsoon Update

Most of the Monsoon season (June 15th - September 30th) has been completed. How have things gone where you live? We'll take a look at a few parameters to see how things have turned out so far across Arizona and southeast California.

Monsoon Update - Continued

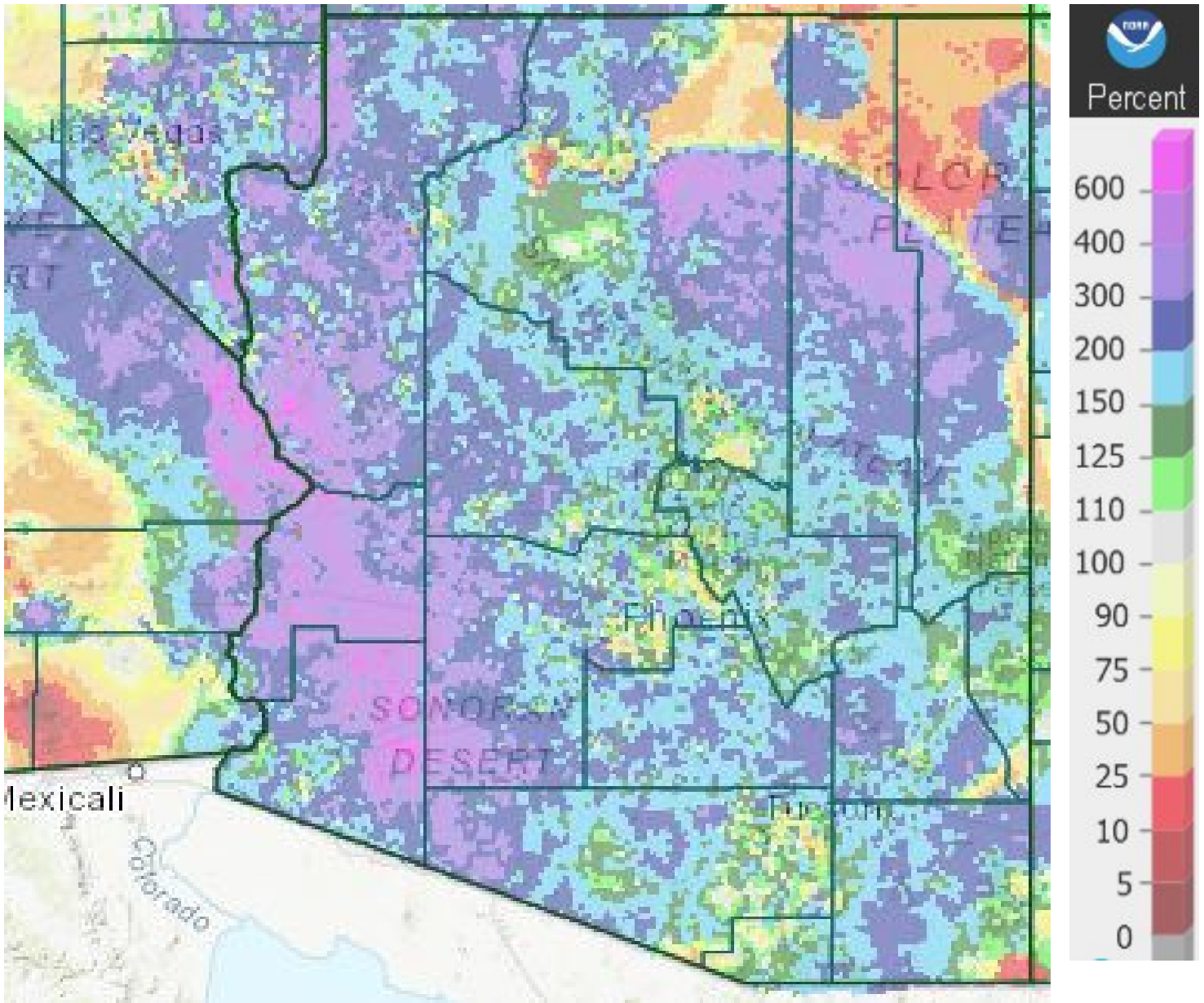
The parameter that people tend to be most interested in is precipitation. The maps below show total precipitation for the past 90 days ending August 28th and percent of average for the same time frame.



Total Precipitation 6/15 - 8/29

Monsoon Update - Continued

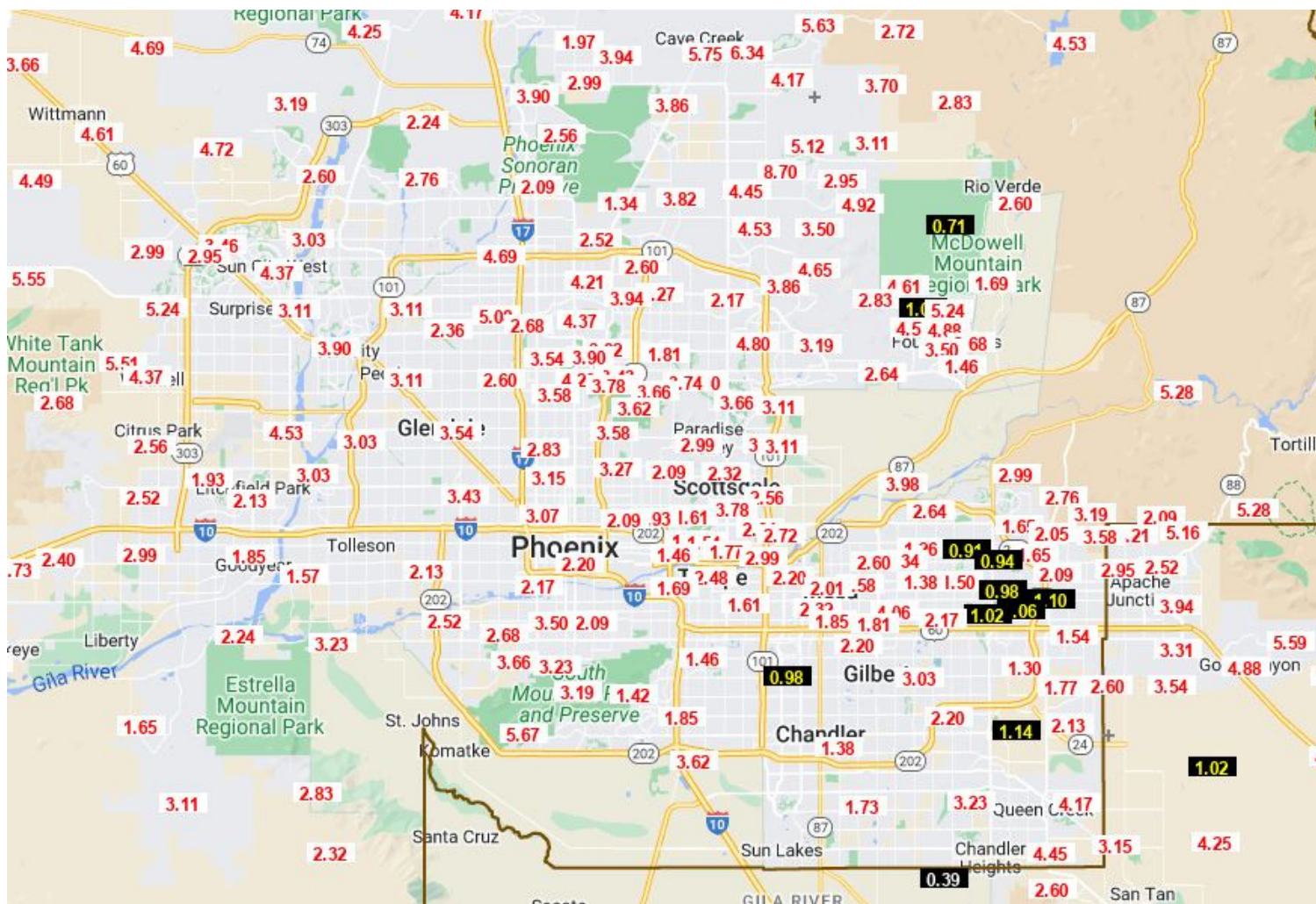
A lot of places have seen at least average if not noticeably above average. This has been especially evident over western Arizona and portions of northeast Arizona where they have had over 300% of average and in some pockets over 600%!



Percent of Average 6/15 - 8/29

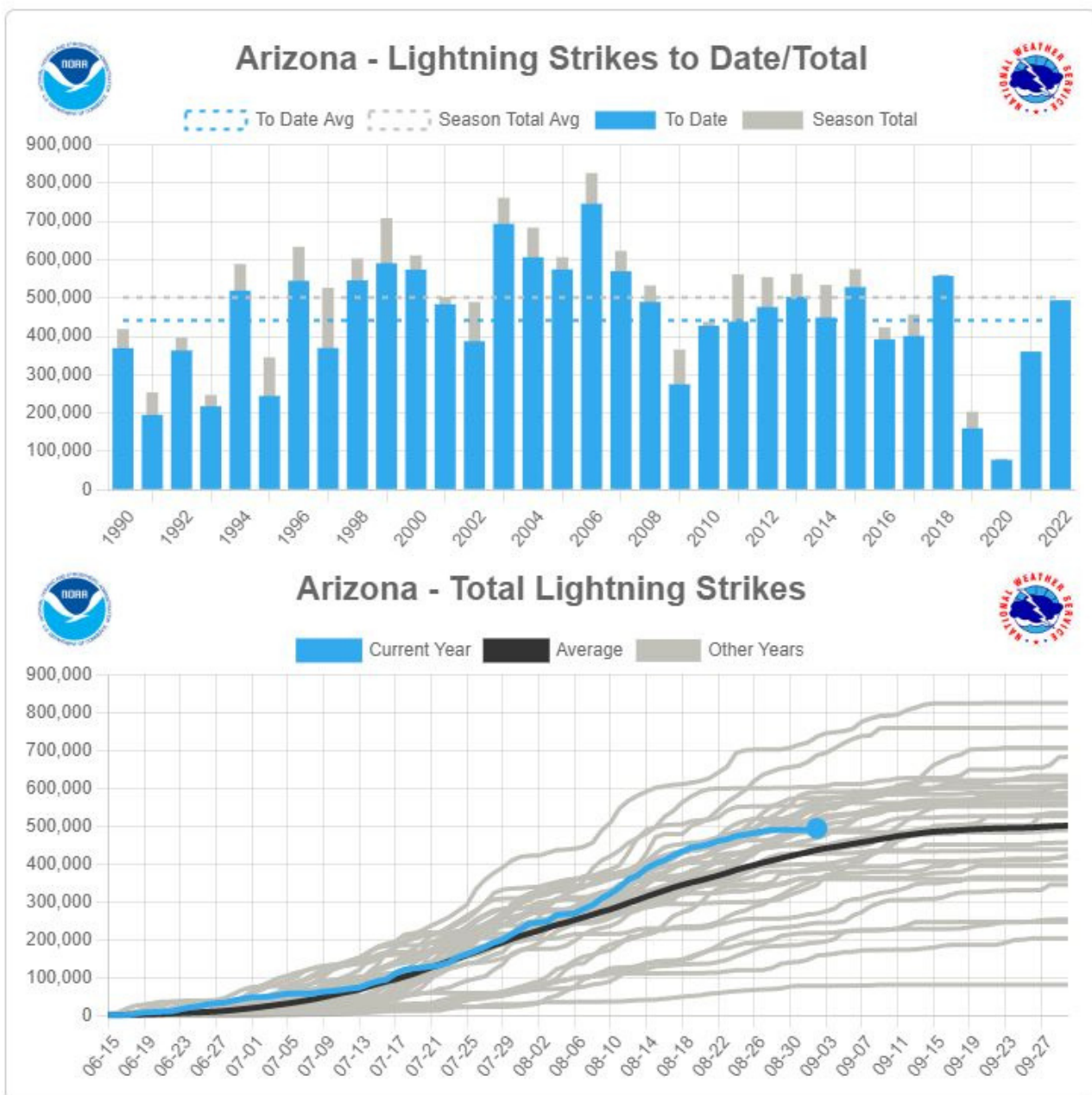
Monsoon Update - Continued

Below is a map of the Phoenix area showing preliminary rainfall totals from the 90 day period ending 9/2 courtesy of the Maricopa County Flood Control District. Real time and historic data can be accessed [here](#). As is typical, there are big differences over short distances. By way of comparison, the Phoenix area average (Phoenix Rainfall Index) is showing 2.16 inches so far for June - August compared to an average of 2.88 inches.



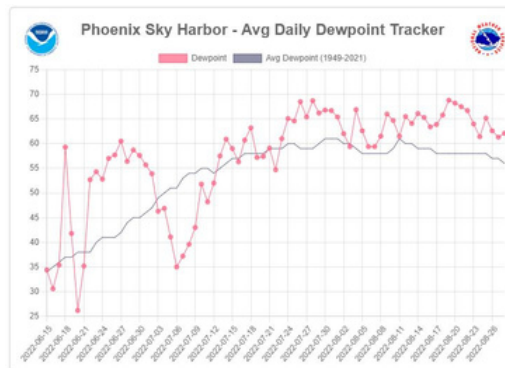
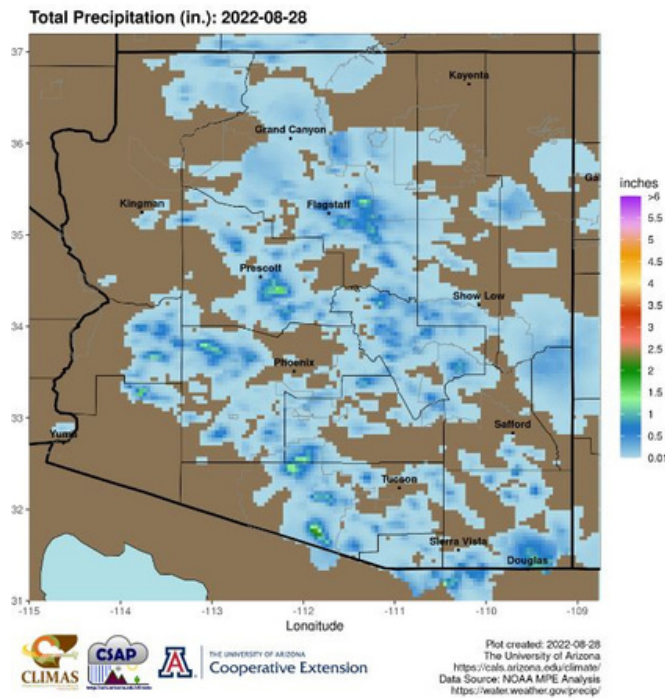
Monsoon Update - Continued

Below are graphs of cloud-to-ground lightning strike data for Arizona from 6/15 - 9/2 courtesy of Vaisala's National Lightning Detection Network. This year has exceeded the average (to date) and is just shy of the average for a whole season.



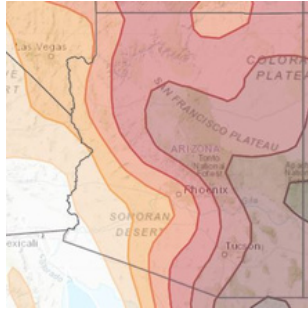
Monsoon Tracker Webpage

If you like to keep close track of how the Monsoon season is going in terms of precipitation, dew points, etc., the [Monsoon Tracker page](#) (combined effort of NWS and University of Arizona) has what you are looking for. The sample images below show a map of daily precipitation (top) and a graph of daily average dew point (available for select locations). In addition, the lightning graphs shown on the previous page can also be found there. There is other data available as well. Check it out!



Additional Webpages of Interest

There is a new webpage from the NWS Storm Prediction Center that shows lightning climatology. For the 48 contiguous states, it shows daily lightning probability. You can run a loop to see how things change through the the course of a year.



Another webpage you may find interesting is focused on the number 1 weather related killer: Heat. The page is focused on Phoenix and has current temperature forecast information, historical data, and maps of HeatRisk - a way of representing potential impact on public health for a given forecast.

Phoenix, AZ
EXCESSIVE HEAT WARNING

Updated at 8:15 PM on Mon Aug 29, 2022
In Effect from 10 AM Tue Aug 30, 2022 to 8 PM Wed Aug 31, 2022

Tue	Wed	Thu	Fri	Sat	Sun	Mon
111	108	107	106	108	107	106
88	86	85	86	86	84	

[HeatRisk Maps](#) | [Historical HeatRisk Data](#)

No risk.	Risk to those extremely sensitive to heat.	Risk to those sensitive to heat.	Risk to most people.	Risk to everyone.
None	Low	Moderate	High	Very High

- + Daily Records
- + Week 1 Overview
- + Week 2 Outlook
- + NWS Phoenix Heat Policy & HeatRisk
- + Heat Safety
- + Historical Heat Warning Dates
- + Heat Climate Stats

Spotter Reports

Spotter reports have a core set of elements: Who, What, Where, When.

Who

The one submitting the report (you the Spotter). Specifically, your Spotter ID. If you've forgotten, don't wait to find it - just supply your name. Ask Austin to send it to you if forgotten (austin.jamison@noaa.gov).

What

A detailed description of what you have observed. For instance, if there is tree damage, let us know if it is just limbs snapped off or whole trees knocked over. Also, tell us the diameter of the branches than have been snapped - note the biggest one. If the whole tree is down, tell us the diameter of the trunk at the base.

Where

If it occurred at your home, you can simply tell us that and we should have address on hand. If somewhere else, let us know the city and nearest major cross-streets.

When

The time the report-worthy (meeting criteria) conditions first began - or at least when you first started observing them.

Spotter Reports - Continued

Reporting Criteria:

- Tornado
- Funnel Cloud
- Storm Damage (broken tree limbs, shingles off roofs, etc.)
- Flooding (streets, running washes, etc.)
- Low Visibility
 - less than 1 mile due to dust, sand, fog, etc. (not rain though)
- Rotating Wall Cloud
- Heavy Rainfall
 - measured ½ inch or more accumulation in 30 min. or less
- Hail (diameter of largest stone - any size)
- Snow (accumulating or not)

Reporting Methods (for Spotters only):

- Web: <https://inws.ncep.noaa.gov/report/>
- Email: psr.spotters@noaa.gov
- Voice Hotline (unlisted - just for Spotters): 1-800-697-0655

- HAM Radio NET

443.050 MHz (+) (PL100.0)

Sector 2 - Maricopa and Pinal Counties: *NEW* ~~443.050 MHz (PL 100.0)~~

Sector 6 - Southern Gila County: 147.200 MHz (PL 162.2)

Sector 7 - Yuma County 146.780 MHz (PL 103.5)

and Imperial County: 146.880 MHz (PL 162.2)

*NEW Sector 9 - La Paz County and Blythe: 147.060 (PL 203.5) and 145.310 (PL 107.2)

STAYING CONNECTED

SOCIAL MEDIA

Be sure to stay up to date with the weather and our other programs by following us on social media.



/NWSPhoenix



@NWSPhoenix



@nwsphoenix



/NWSPhoenix

HAS YOUR INFORMATION CHANGED?

If your email, phone number, or address has changed since your last class, please click the link to help us keep that information up to date.

[GOOGLE FORM TO CHANGE CONTACT INFORMATION](#)

FORGOT YOUR SPOTTER ID?

It happens to the best of us! Send Austin an email he will email you back with your information.

AUSTIN.JAMISON@NOAA.GOV

NO LONGER WANT TO BE A SPOTTER?

If you would no longer like to be one of our trained weather spotters, you can fill out this google form and we will remove you from our database of spotters.

[GOOGLE FORM TO BE TAKEN OFF SPOTTER DATABASE](#)