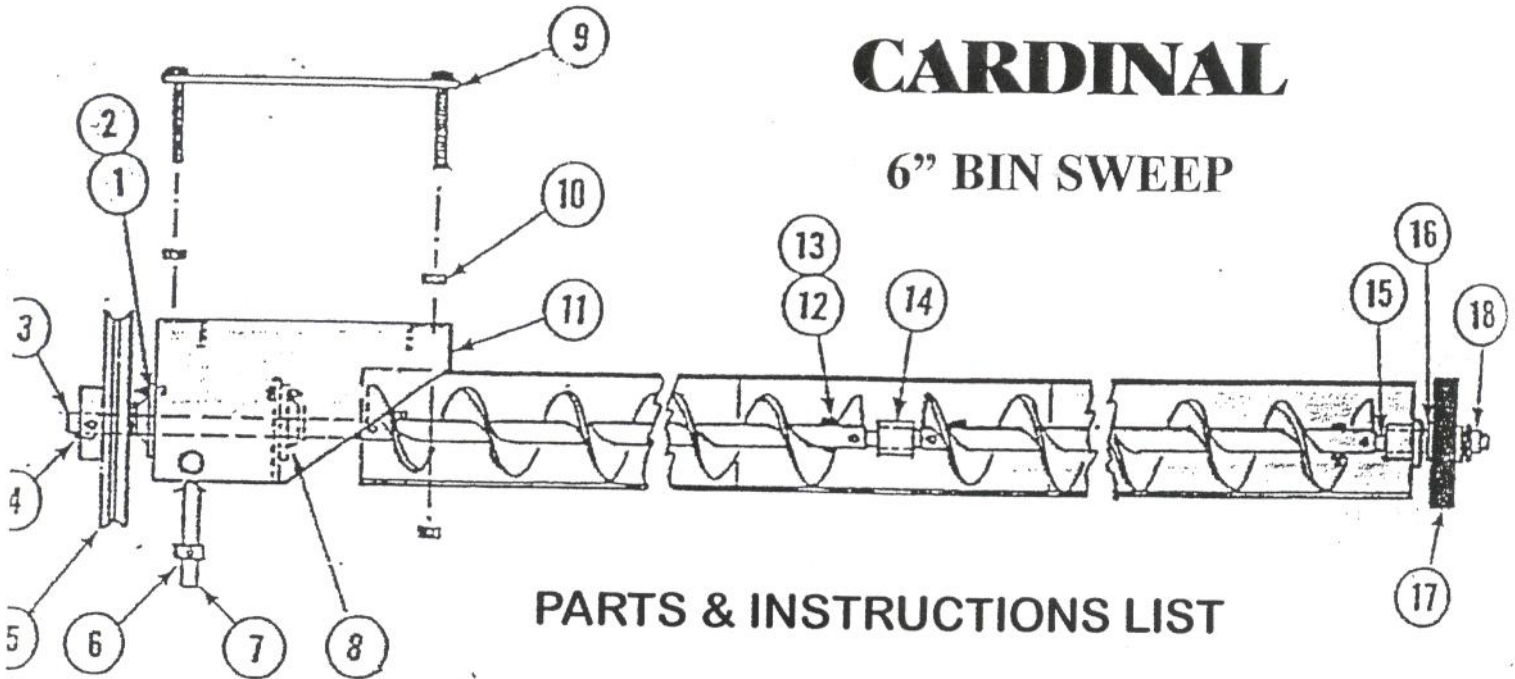


CARDINAL

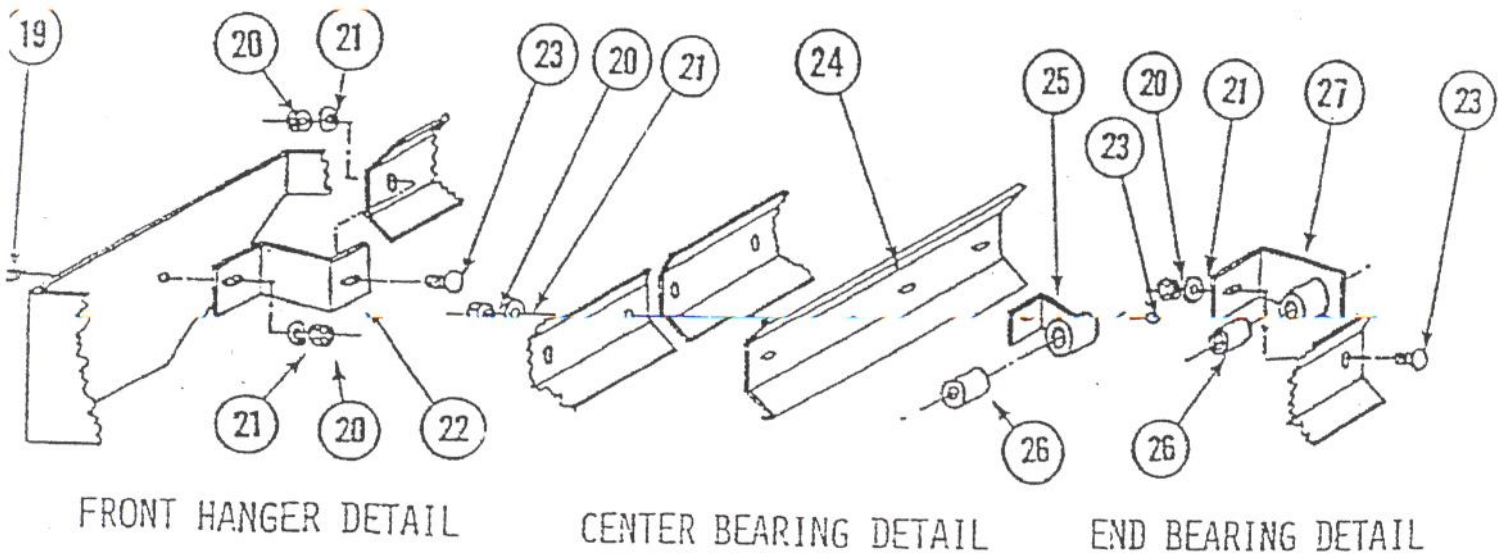
6" BIN SWEEP



PARTS & INSTRUCTIONS LIST

KEY #	PART #	DESCRIPTION	KEY #	PART #	DESCRIPTION
1.	1195	HHCS 5/16-18X3/4	15.	20812	WHEEL SHAFT
2.	1273	LOCKNUT 5/16-18	16.	1296	FLAT WASHER 9/16
3.	20811	DRIVE SHAFT	17.	A20814	WHEEL 5" OD X 1 1/2"
4.	18743	SQ KEY 3/16X1 1/4	18.	1277	LOCKNUT 5/8-11
5.	A26940	PULLEY	19.	1174	HHCS 3/8-16X3/4
6.	A17520	COLLAR	20.	1274	LOCKNUT 3/8-16
7.	A20810	SWIVEL 'T'	21.	1294	FLAT WASHER 3/8
8.	A16878	BEARING	22.	20815	HANGER BRACKET
9.	A24413	MOTOR MOUNT	23.	1216	CARR BOLT 3/8-16X3/4
10.	1332	WHIZ NUT 1/2-13	24.	20818	SPLICE PLATE
11.	A26246	DRIVE HOUSING	25.	A20816	CENTER BEARING
12.	23069	COUPLER BOLT	26.	15413	BUSHING
13.	1271	LOCKNUT 1/4-20	27.	A20813	END BEARING
14.	20817	COUPLER SHAFT			

NOTE: SEE BACK FOR SWEEP SCREW & SCOOP IDENTIFICATION



FRONT HANGER DETAIL

CENTER BEARING DETAIL

END BEARING DETAIL

BIN DIA	SCREW #	SCREW LENGTH	SCOOP #	SCOOP LENGTH	REQ # OF EACH	
18 FT.	A20842	94 5/8"	20835	96"	1	NO CENTER BRG
21 FT	A20843	9'5"	26264	9' 6 3/8"	1	NO CENTER BRG
24 FT	A20844	64 3/4"	20832	66 1/4"	2	1-CENTER BRG
27 FT	A20845	73 3/4"	20834	75 1/4"	2	1-CENTER BRG
30 FT	A20903	82 3/4"	20905	84 1/4"	2	1-CENTER BRG
36 FT	A20846	8'4 3/4"	26265	8' 6 3/16"	2	1-CENTER BRG

INSTRUCTIONS FOR BIN SWEEPS

1. A set screw collar (key #18) is provided on the swivel "t" to allow for some up and down adjustment of the sweep auger in relation to the top of the sump or well in the bin floor.
2. The wheel (key #10) is held on it's shaft by a self locking type nut which can be adjusted to provide more or less driving power on the wheel.
3. The scoop has slotted holes to allow for some up and down adjustment of it's bottom edge in relation to the bottom of the auger screw.

CAUTION

1. READ AND UNDERSTAND THE OPERATORS MANUAL BEFORE OPERATING.
2. KEEP ALL SAFETY SHIELDS AND DEVICES IN PLACE.
3. MAKE CERTAIN EVERYONE IS CLEAR BEFORE OPERATING EQUIPMENT.
4. KEEP HANDS, FEET, AND CLOTHING AWAY FROM MOVING PARTS.
5. SHUT OFF POWER TO ADJUST, SERVICE OR CLEAN.
6. DISCONNECT POWER BEFORE RESETTING MOTOR OVERLOADS.
7. MAKE CERTAIN ELECTRIC MOTORS ARE GROUNDED.

FAILURE TO FOLLOW THESE INSTRUCTIONS MAY RESULT IN PERSONAL INJURY.

CARDINAL GRAIN SYSTEMS INC.
P.O. BOX 992
 COLEBROOK, ILL, 61013
PH: 219-244-4654