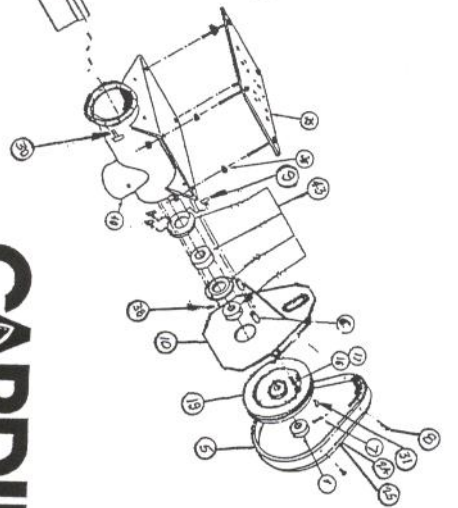
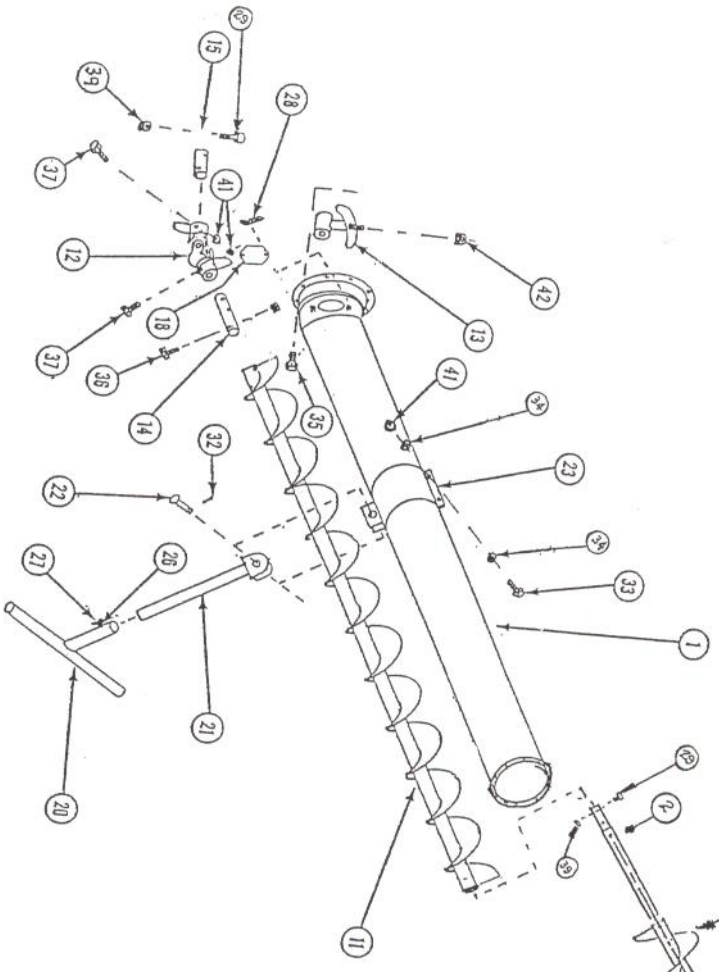


6" INCLINE UNLOADING AUGER

FOOTNOTE: #12 U-JOINT (INSTALL JOINT HALF WITH GREASE ZERK ON INCLINE SCREW)



CARDINAL

6" INCLINE UNLOADING AUGER

KEY #	PART #	DESCRIPTION	QTY
1.	A28755	6" TUBE w/a	1
2.	24415	DRIVE SHAFT	1
3.	A24411	DISCH SCREW	1
4.	15502	COLLAR	1
5.	A27496	BELT GUARD	1
6.	23043	SPACER	2
7.	15389	SPRING PIN 3/16x1 1/2	1
8.	1319	SELF TAP SCREW 1/2x1 1/2	4
9.	1214	CARR BOLT 5/16-18x3/4	3
10.	26999	BACKPLATE "	1
11.	A20013	INCLINE SCREW w/a	1
12.	A28762	U JOINT w/a	1
13.	A28761	HANGER BEARING	1
14.	28760	INCLINE SHAFT	1
15.	28759	INCLINE SHAFT	1
16.	1329	HCS 1/20x 1 3/4	2
17.		ACCESS DOOR	1
18.	23407	PULLEY 10.75 OD 2 GR 7/8 BORE	1
19.	26324	BASE w/a	1
20.	A26733	CLEVIS	1
21.	A26736	CLEVIS PIN	1
22.	26732	CLAMP BAND w/a	1
23.	A28754	"CARDINAL" DECAL	1
24.	26319	"CAUTION" DECAL	1
25.	27018	HOOK-BOLT	1
26.	15476	WING NUT	1
27.	19330	WING NUT	1
28.	21872	COUPLER BOLT	2
29.	23069	HCS 5/16-18x1	7
30.	1159	WOODRUFF KEY	9
31.	15304	COTTER PIN 1/8x1 1/2	2
32.	1150	HCS 3/8-16x1	2
33.	1175	FLAT WASHER 3/8	4
34.	1294	MOTOR PLATE w/a	1
35.	A24413	WHIZ NUT 1/2-13	1
36.	1332	HCS 5/16-18x2 1/2 GR5	8
37.	1198	LOCKNUT 5/16-18	2
38.	1273	LOCKNUT 1/2-20	14
39.	1271	DISCH HEAD w/a	9
40.	A24409	LOCKNUT 3/8-16	1
41.	1274	LOCKNUT 1/2-13	1
42.	1276	BEARING COMPLETE 7/8	1
43.	A16878		1