

• FAN PERFORMANCE RATED IN
INCHES OF STATIC PRESSURE •

CFM AT INCH OF STATIC PRESSURE

MODEL	FAN SIZE	H.P.	0.50	1.00	1.50	2.00	2.50	3.00	3.50	4.00	4.50	5.00
12075	12"	3/4	2115	1850	1050	480	240					
12100	12"	1.0	2115	1850	1050	480	240					
14100	14"	1.0	3600	3170	2350	1300	920	640	350			
16200	16"	2	3700	3300	2800	1865	1275	800	600			
18200	18"	2	4975	4650	4100	3120	2050	1550	950			
18300	18"	3	5980	5600	5400	4950	4600	3200	2300	1800	1200	
24500	24"	5	12200	11600	10800	10050	9190	8100	6400	4900	3900	3000
241000	24"	10	14850	14325	13750	13235	12375	11400	10200	7550	5380	4350
281300	28"	15	16300	15600	15100	14435	13700	12800	12200	11340	10500	9500

FAN DATA

MODEL	H.P.	NO. OF BLADES	OVERALL LENGTH	BOLT HOLE DIAMETER
12075	3/4	6	14	7/16" x 13/16"
14100	1.0	6	14	7/16" x 13/16"
16200	2	7	16	7/16" x 13/16"
18200	2	6	18	7/16" x 13/16"
18300	3	6	18	7/16" x 13/16"
24500	5	6	27	7/16" x 13/16"
241000	10	6	27	7/16" x 13/16"
281300	15	6	28	7/16" x 13/16"

01-13/AFFP

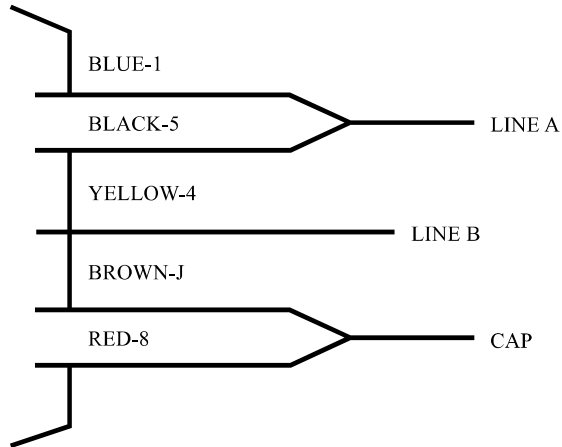
• MOTOR AMPS FOR AERATION FANS •

FAN MODEL	1 PH 115V/230V	RUNNING AMPS 3 PH 230V	3PH 460V
SA-12075	9.0	2.4	1.2
SA-12100	11	2.7	1.35
SA-14100	11	3.6	1.8
SA-16200	8.8	6.8	3.4
SA-18200	8.8	6.8	3.4
SA-18300	15.4	7.4	3.7
SA-24500	28	15	7.5
SA-241000	38	25	12.5
SA-281300	50	36	18

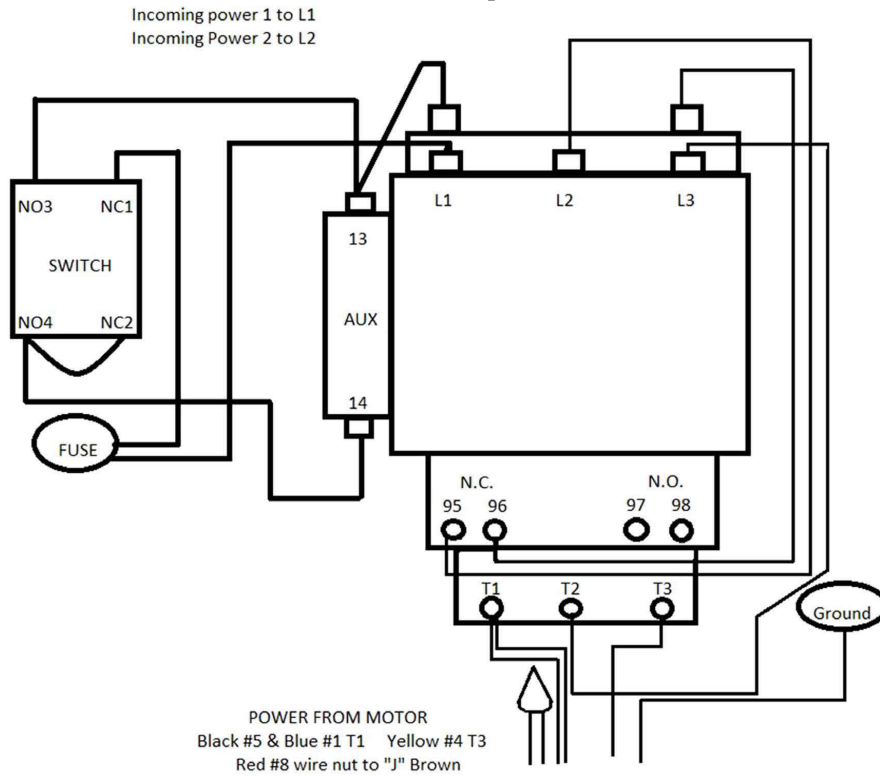
*Starting Amps on aeration fans could require up to 5x the amount of amperage listed on the motor name plate.

• WIRING DIAGRAMS •

18" 2 & 3 HP 1 PHASE BALDOR MOTOR



18" 1ph 230v with Starter

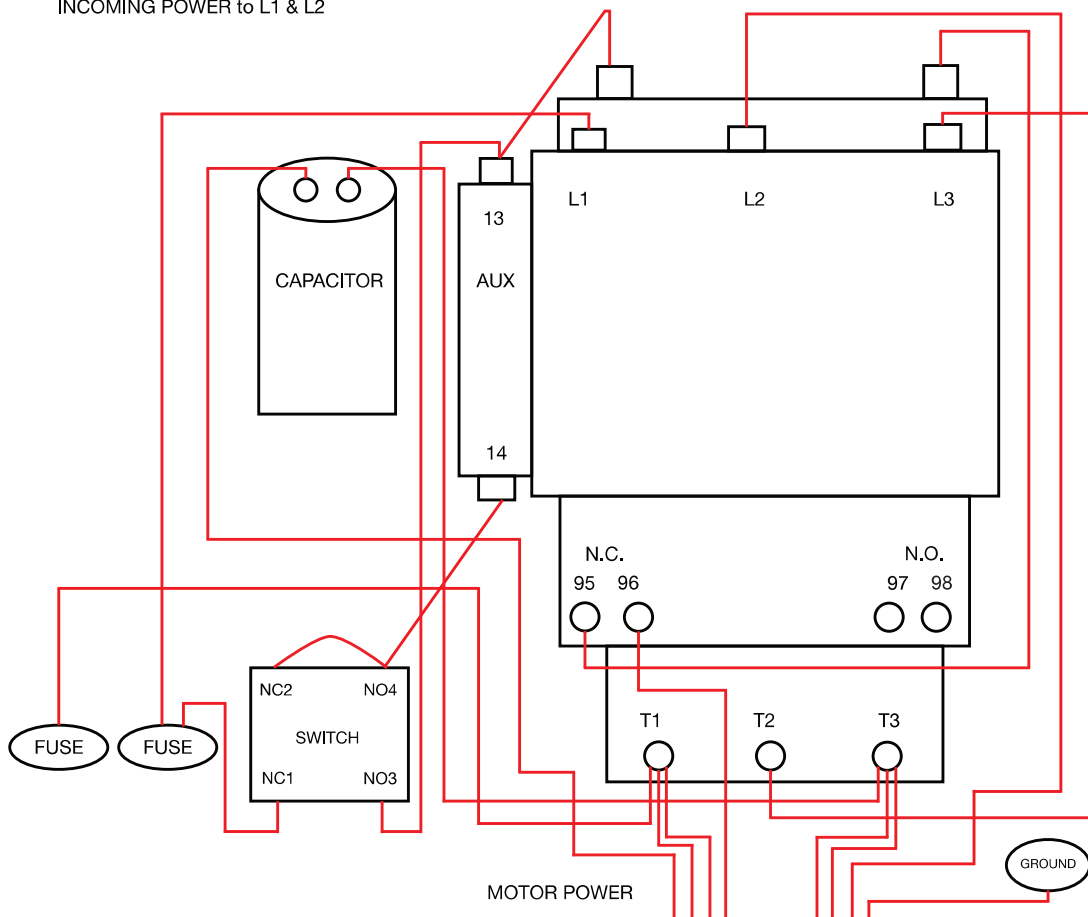


01-13/AFWD 18 2&3 HP1

• WIRING DIAGRAMS •

230 VOLT - 1 PH

MOTOR BLUE (#1) & BLACK (#5) to T1
MOTOR RED (#8) & YELLOW (#4) to T3
MOTOR J TO 96, MOTOR J to L2
MOTOR BLACK (#0) to CAPACITOR LEFT
INCOMING POWER to L1 & L2



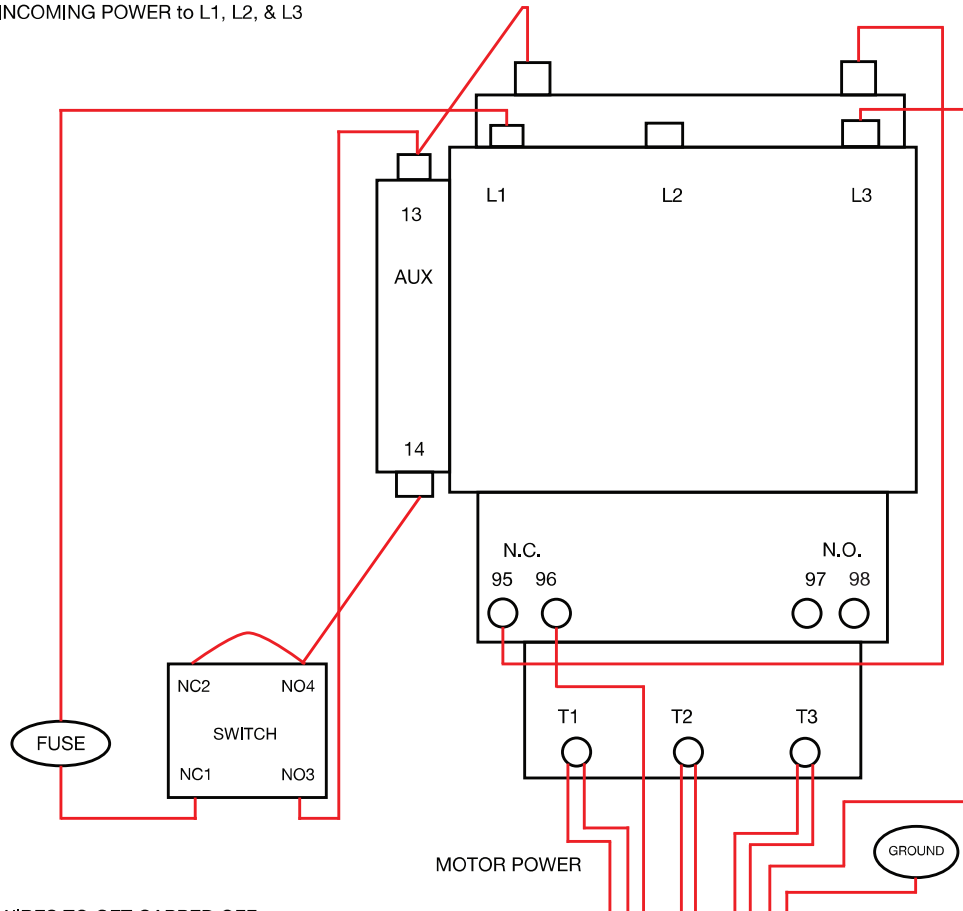
NOTICE!
THE VOLTAGE BETWEEN 'L1' AND 'N' MUST BE 120 VAC NOMINAL. OTHER VOLTAGE WILL CAUSE DAMAGE TO EQUIPMENT.

04-16/WD 230V 1PH 230/460V3PH

• WIRING DIAGRAMS •

230 VOLT - 3 PH

MOTOR POWER GRAY (#9) & ORANGE (#3) to T3
 MOTOR POWER RED (#8) & WHITE (#2) to T2
 MOTOR POWER PINK (#7) & BLUE (#1) to T1
 MOTOR J TO L3, MOTOR J to 96
 INCOMING POWER to L1, L2, & L3



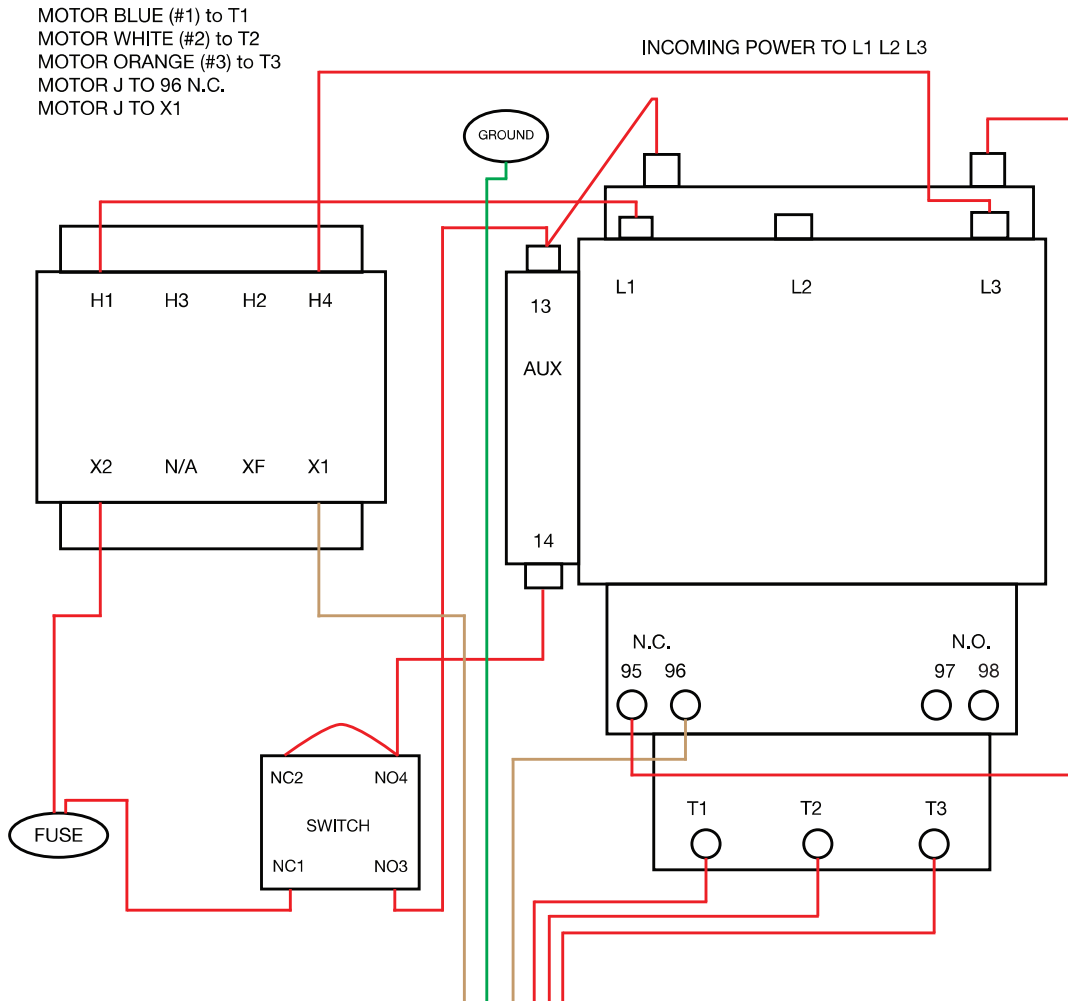
WIRES TO GET CAPPED OFF:
 YELLOW (#4), BLACK (#5), AND PURPLE (#6)

NOTICE!
 THE VOLTAGE BETWEEN 'L1' AND 'N' MUST BE 120 VAC NOMINAL. OTHER VOLTAGE WILL CAUSE DAMAGE TO EQUIPMENT.

04-16/WD 230V 1PH 230/460V3PH

• WIRING DIAGRAMS •

460 VOLT - 3 PH



WIRES TO GET CAPPED OFF:
 YELLOW (#4) AND PINK (#7)
 BLACK (#5) AND RED (#8)
 PURPLE (#6) AND GRAY (#9)

*SEE TRANSFORMER LABEL FOR PROPER CONNECTIONS

04-16/WD 230V 1PH 230/460V3PH