

• FAN DATA •

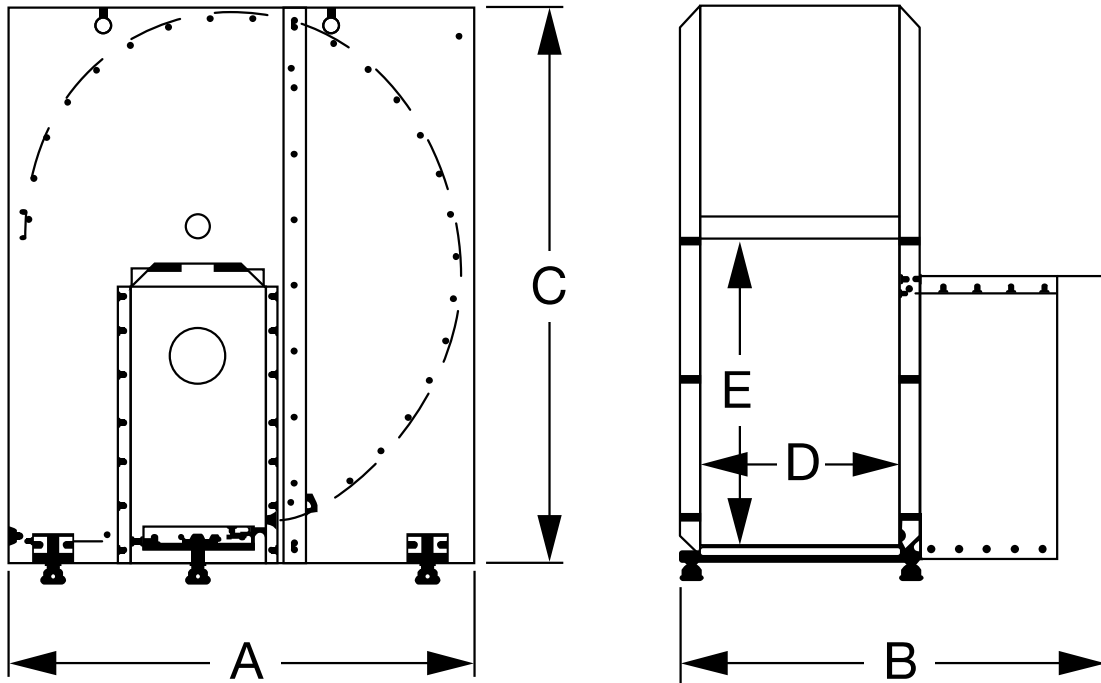
CFM AT INCH OF STATIC PRESSURE

MODEL	FAN SIZE	HP	0	1"	2"	3"	4"	5"	6"	7"
SA-CF50	22"	5	9,200	8,400	7,600	7,000	6,100	4,500		
SA-CF75	24"	7.5	11,400	10,600	9,800	9,200	8,300	7,400	5,000	
SA-CF10	27"	10	13,000	12,250	11,500	11,000	10,500	9,500	9,000	7,600
SA-CF15	27"	15	18,000	17,500	16,500	15,750	15,000	14,000	12,250	11,000
SA-CF20	27"	20	20,500	19,500	18,500	17,750	16,500	15,500	14,000	12,000
SA-CF25	30"	25	25,000	24,000	23,000	22,000	21,000	20,000	19,000	18,000
SA-CF30	30"	30	25,000	24,000	23,000	22,000	21,000	20,000	19,000	18,000

MOTOR AMPS

FAN MODEL	1PH 230V	3PH 230V	3PH 460V
SA-CF50	23	13.4	6.7
SA-CF75	30	18.8	9.4
SA-CF10	38	24.4	12.2
SA-CF15	66	36.2	18.1
SA-CF20	-	48	24
SA-CF25	-	60	30
SA-CF30	-	76	38

## • CENTRIFUGAL FAN DIMENSIONS •



1725 RPM CENTRIFUGAL FAN DIMENSIONS - INCHES

	A	B	C	D	E
5 HP	38	32 1/2	43 1/4	15	20
7.5 HP	38	34	43 1/4	16 1/2	20
10 HP	42 1/4	36	51	16	26 1/2
15 HP	42 1/4	41	51	19	26 3/4
20 HP	42 1/4	42	51	20 1/4	26
25 HP	46 1/4	46	53 3/4	21	26 1/2
30 HP	46 1/4	46	53 3/4	21	26 1/2

\* These dimensions should be used as estimates only and not as a guarantee. Because of new ideas and ways to improve products, Spread-All reserves the right to make changes that may not be reflected in this chart. We will, however, try our best to update them in a timely and cost-effective manner.

10-15/0M/CFD